



ข้อมูลการศึกษาลักษณะการใช้ไฟฟ้า เดือน พฤศจิกายน 2551



Table 1-1

COINCIDENT WITH LOAD RESEARCH SYSTEM'S PEAK ON November 07,2008 time 10:45 6,353.52 MW
(MEA SYSTEM'S PEAK ON November 07,2008 time 14:00 6,683.48 MW)

CLASS	Number of Customers	Kilowatt hours	Coincident Peak (MEA System Peak at time14:00)		Coincident Peak (Load Research System Peak at time 10:45)		Sector Diversified Demand		
			MW	Contribution (%)	MW	Contribution (%)	Max MW.	Date	Time
Residential	2,268,989	715,171,791	671.16	10.71	776.18	12.22	1,904.66	24 Nov 08	22:45
Small General Service	479,562	488,994,542	990.43	15.80	1,023.83	16.11	1,225.42	3 Nov 08	11:30
Medium General Service	19,835	619,894,490	1,561.14	24.90	1,536.12	24.18	1,719.81	4 Nov 08	10:30
Large General Service	1,661	1,173,344,975	2,315.13	36.93	2,288.05	36.01	2,413.90	6 Nov 08	13:45
Specific Business	2,343	140,204,103	245.68	3.92	242.39	3.82	249.54	23 Nov 08	18:30
Government and non Profit organization	11,250	102,170,757	354.72	5.66	359.83	5.66	512.62	3 Nov 08	11:15
Public Lighting	-	19,414,144	0.00	0.00	0.00	0.00	53.41	-	-
Loss	-	65,553,878	130.52	2.08	127.12	2.00	130.52	7 Nov 08	14:00
TOTAL	2,783,640	3,324,748,680	6,268.78	100	6,353.52	100	6,353.52	7 Nov 08	10:45



Table 1-2

Number of sample customers on November, 2008

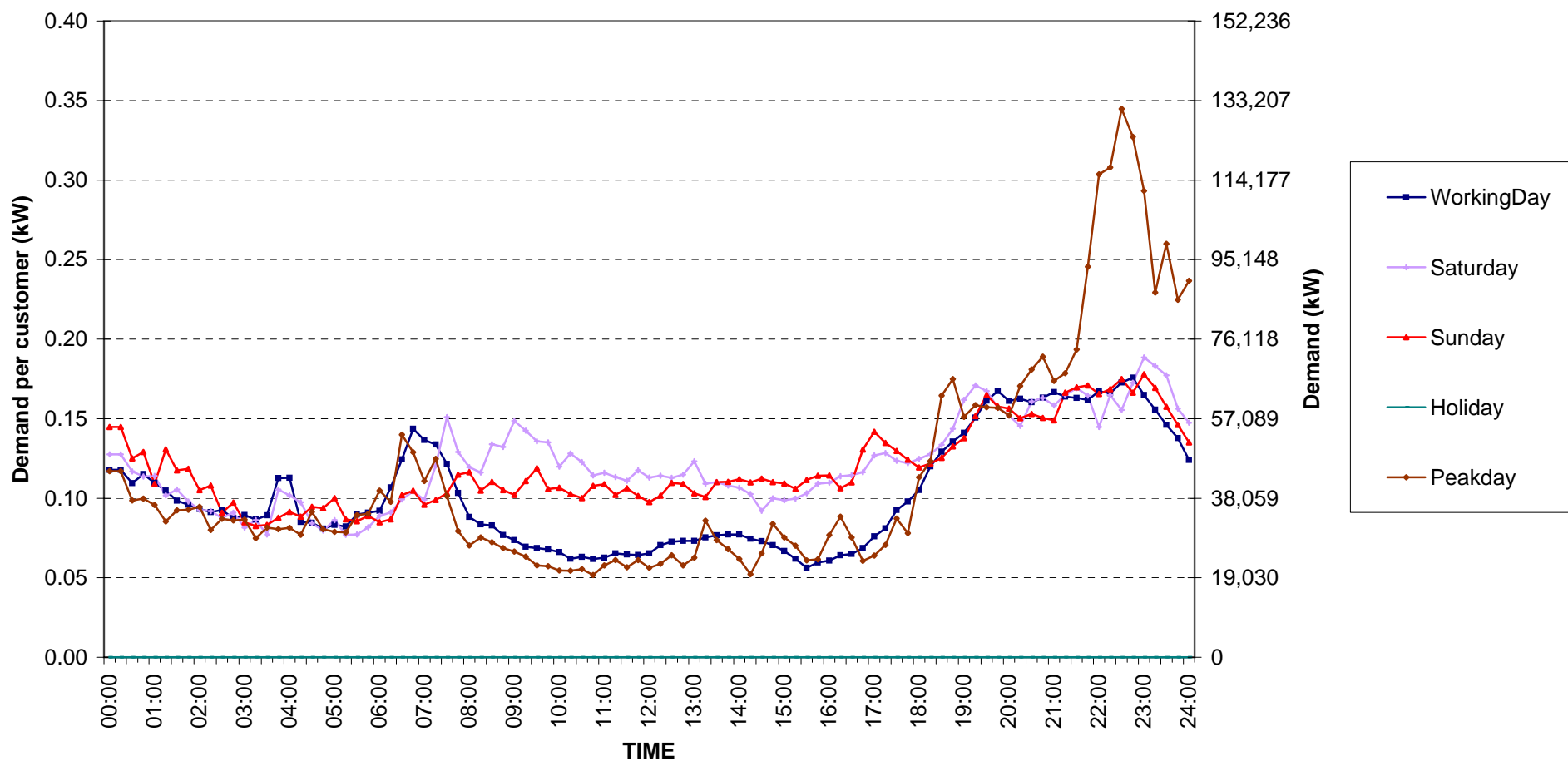
CLASS	Number of sample customers (Target)	Number of sample customers (Collected)
Residential	191	191
Small General Service	297	297
Medium General Service	163	163
Large General Service	328	328
Specific Business	76	76
Government and Non-profit Organization	68	68
TOTAL	1,123	1,123



Residential (Energy Consumption less than 150 kWh per month)

Date: 1 Nov, 2008 to 30 Nov, 2008

Number of sample customers = 10



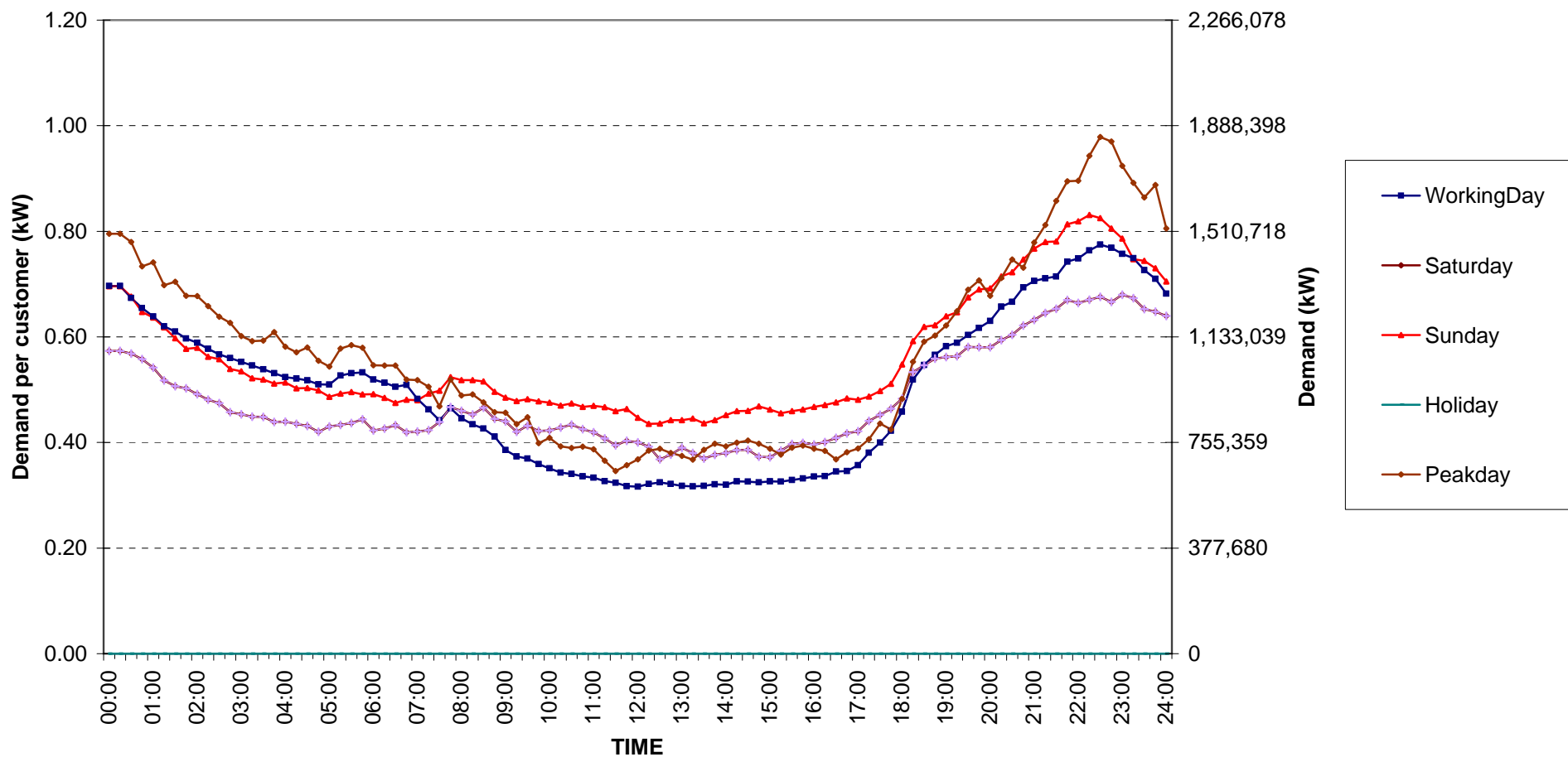
กราฟรูปที่ 1



Residential (Energy Consumption more than 150 kWh per month)

Date: 1 Nov, 2008 to 30 Nov, 2008

Number of sample customers = 181



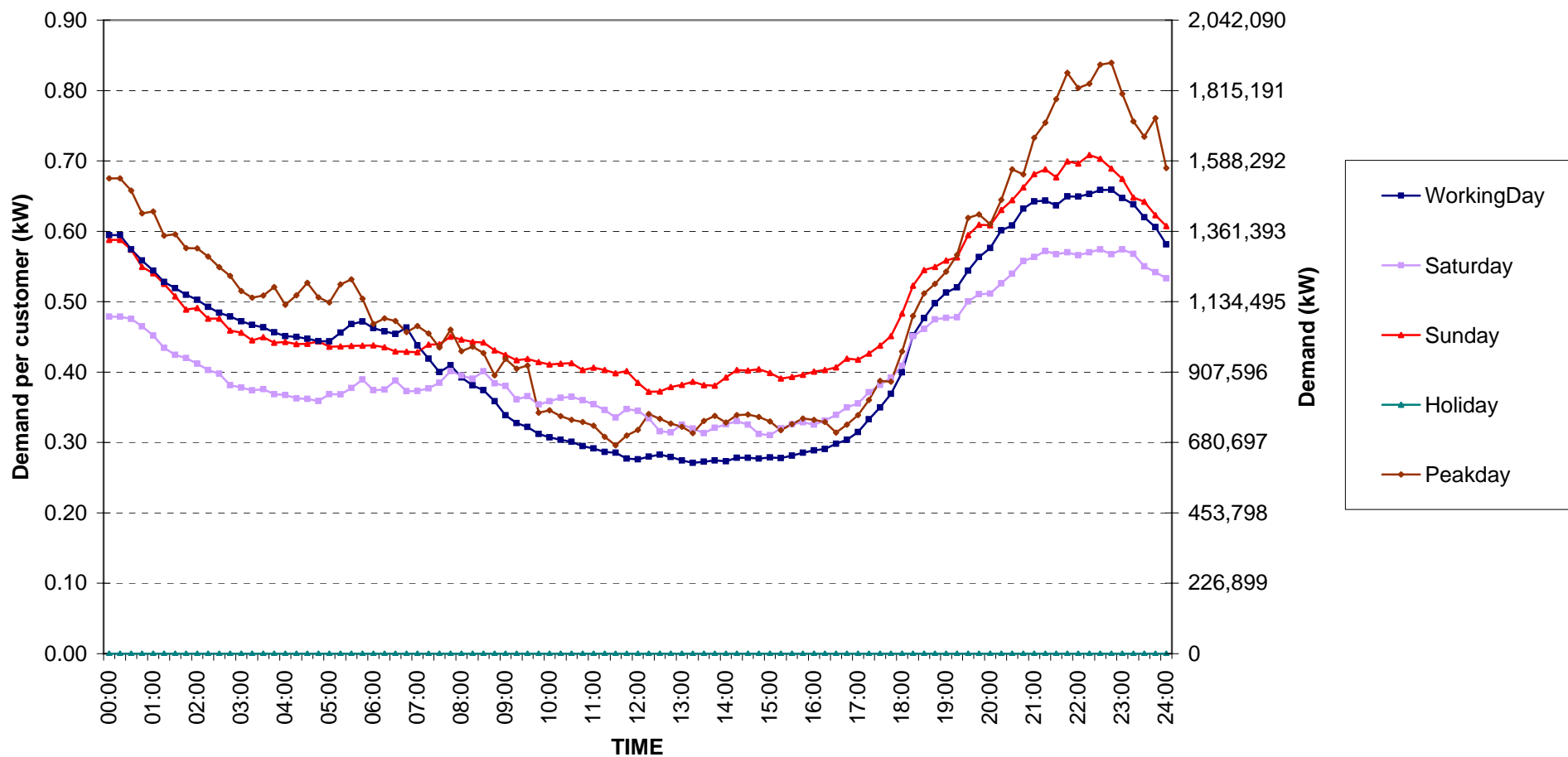
กราฟรูปที่ 2



Residential Load Profile

Date: 1 Nov, 2008 to 30 Nov, 2008

Number of sample customers = 191



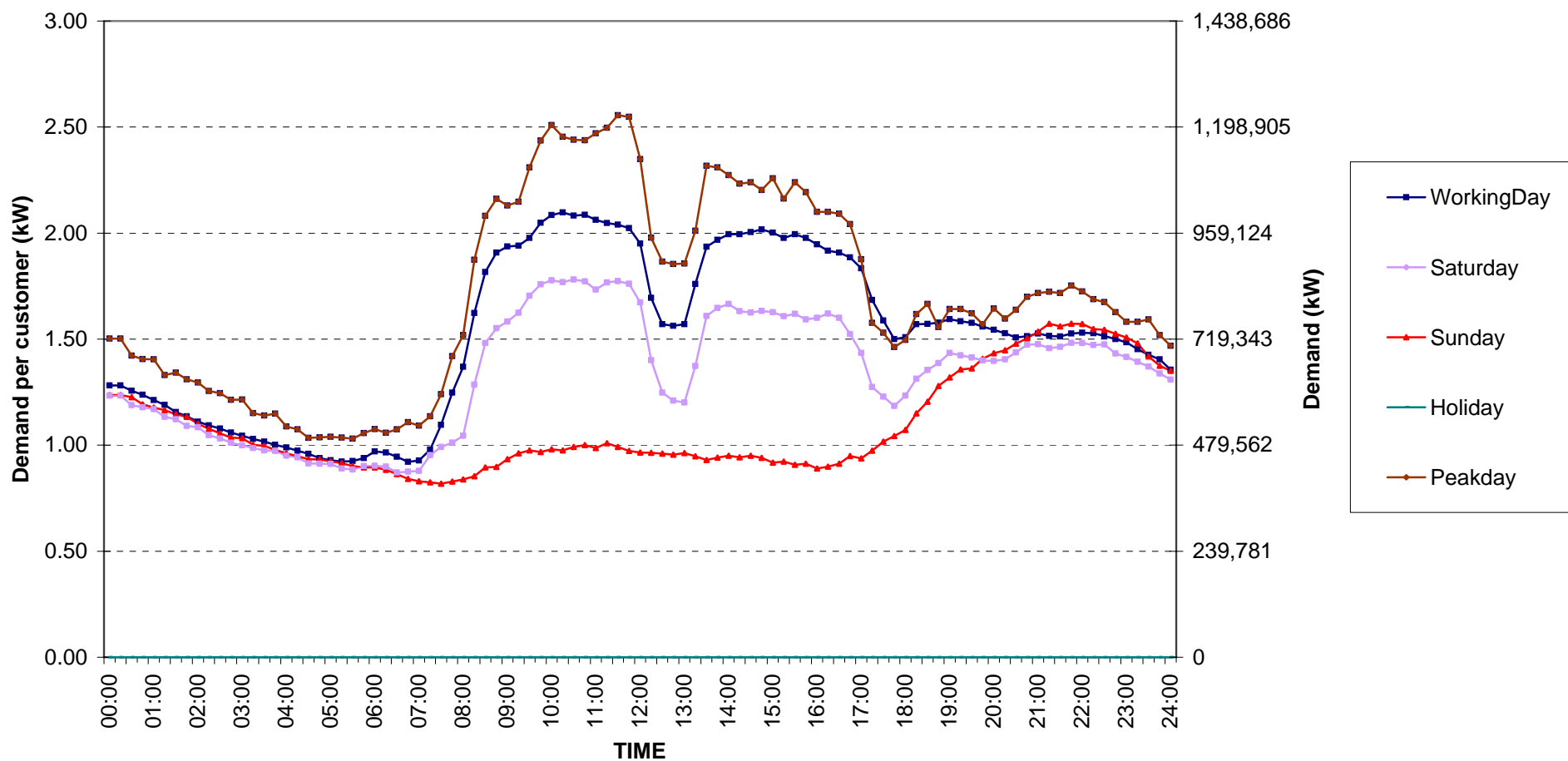
กราฟรูปที่ 3



Small General Services Load Profile

Date: 1 Nov, 2008 to 30 Nov, 2008

Number of sample customers = 297



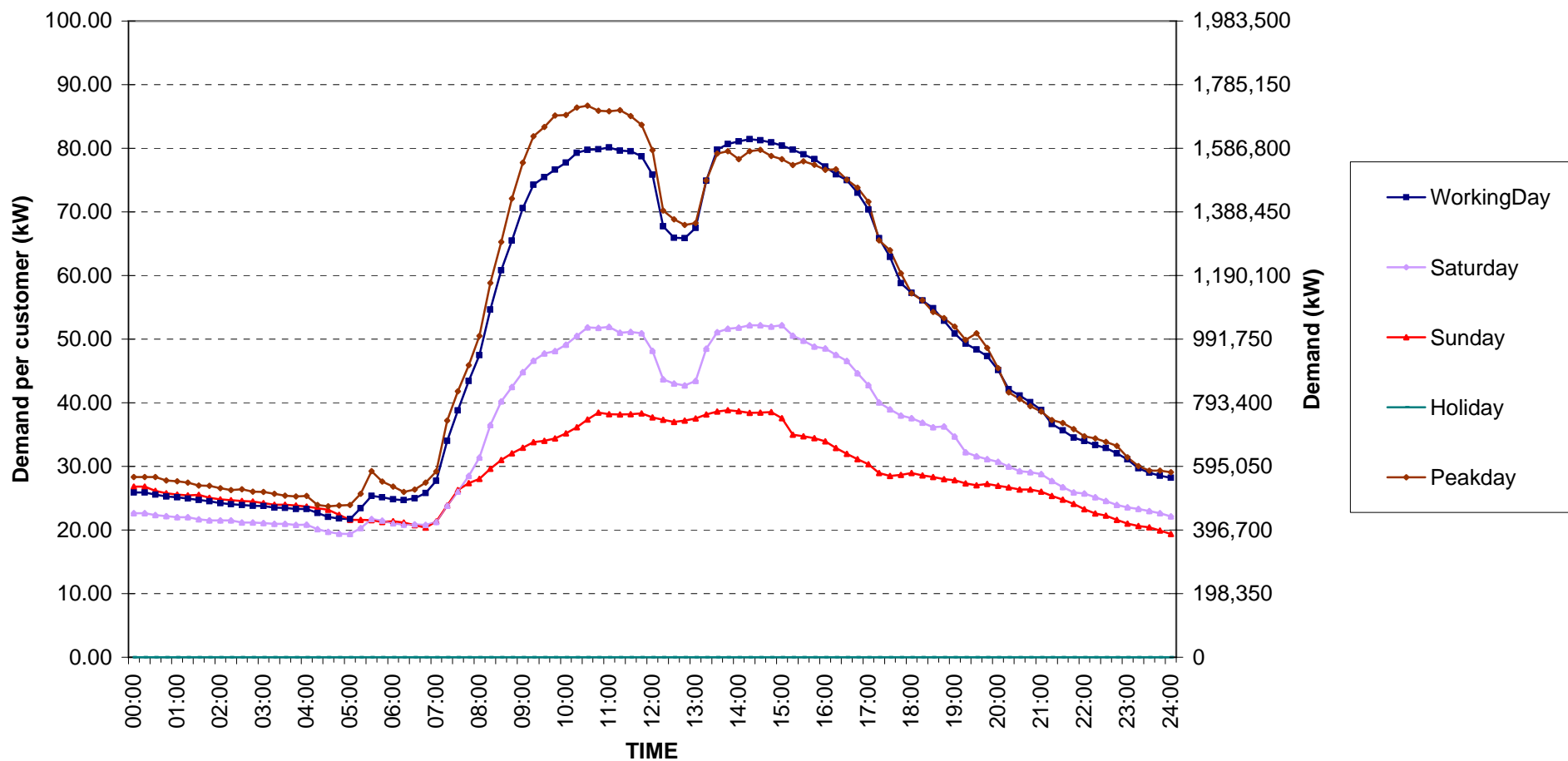
กราฟรูปที่ 4



Medium General Services Load Profile

Date: 1 Nov, 2008 to 30 Nov, 2008

Number of sample customers = 163



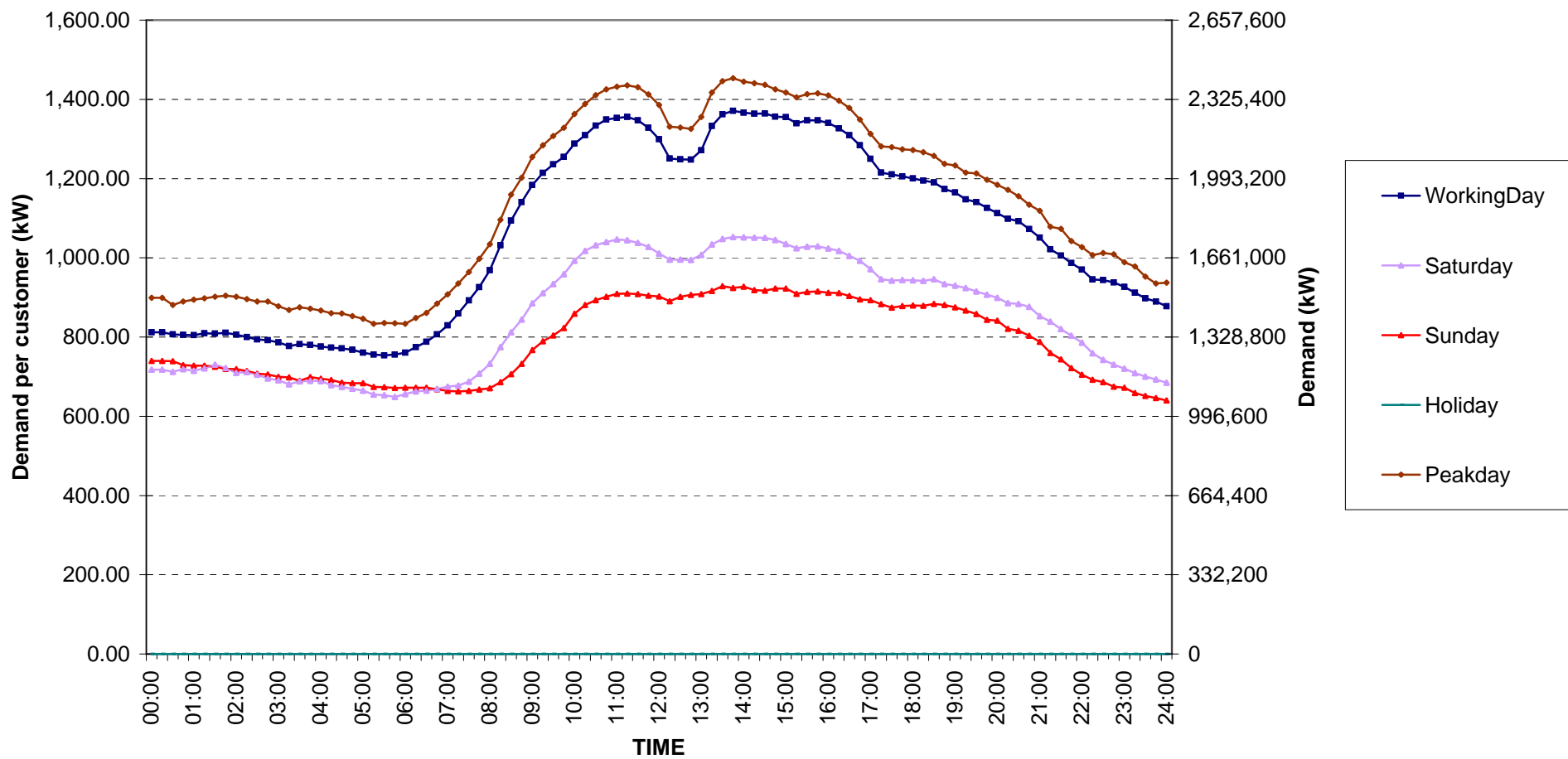
กราฟรูปที่ 5



Large General Services Load Profile

Date: 1 Nov, 2008 to 30 Nov, 2008

Number of sample customers = 328



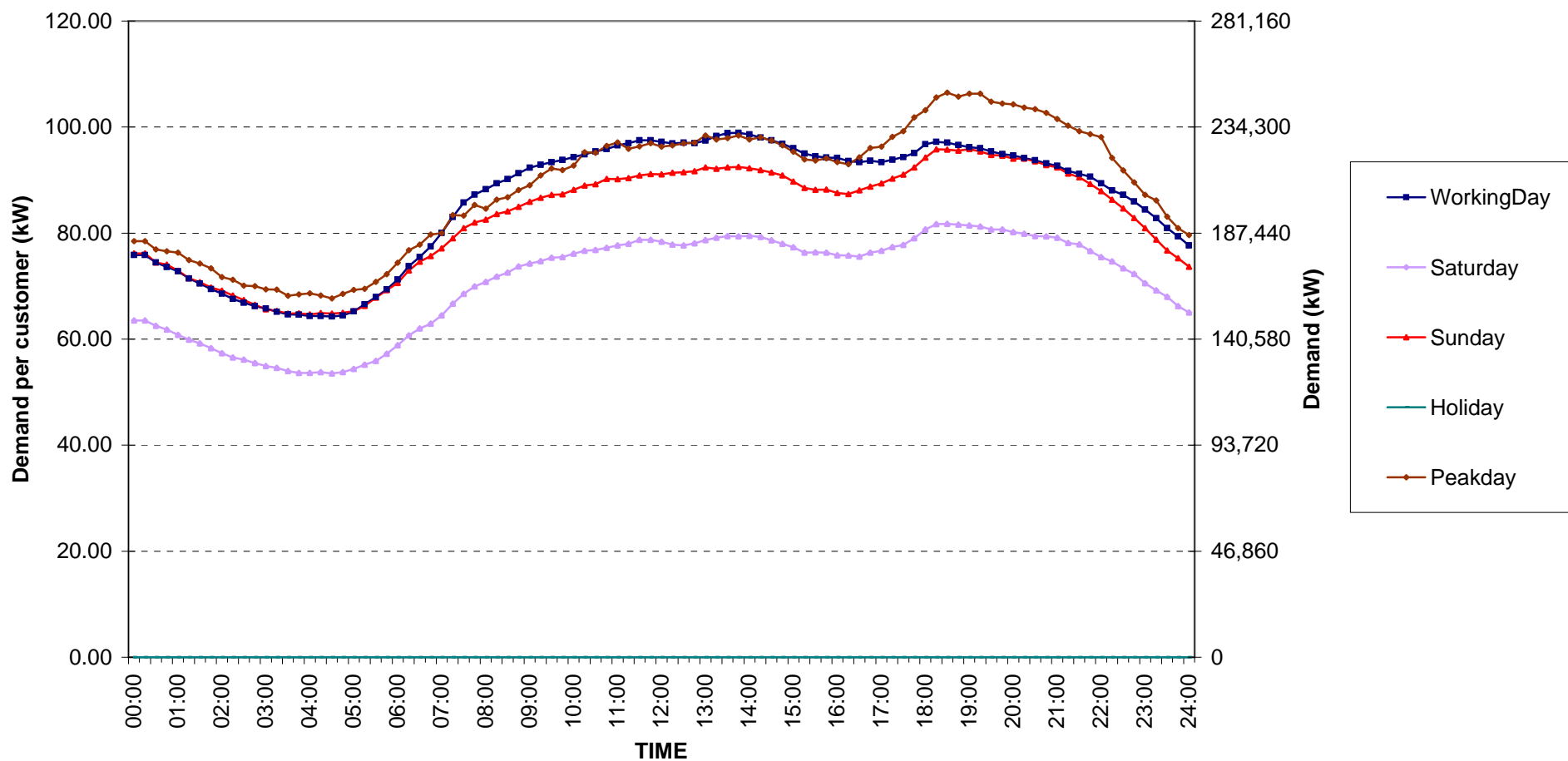
กราฟรูปที่ 6



Specific Business Load Profile

Date: 1 Nov, 2008 to 30 Nov, 2008

Number of sample customers = 76



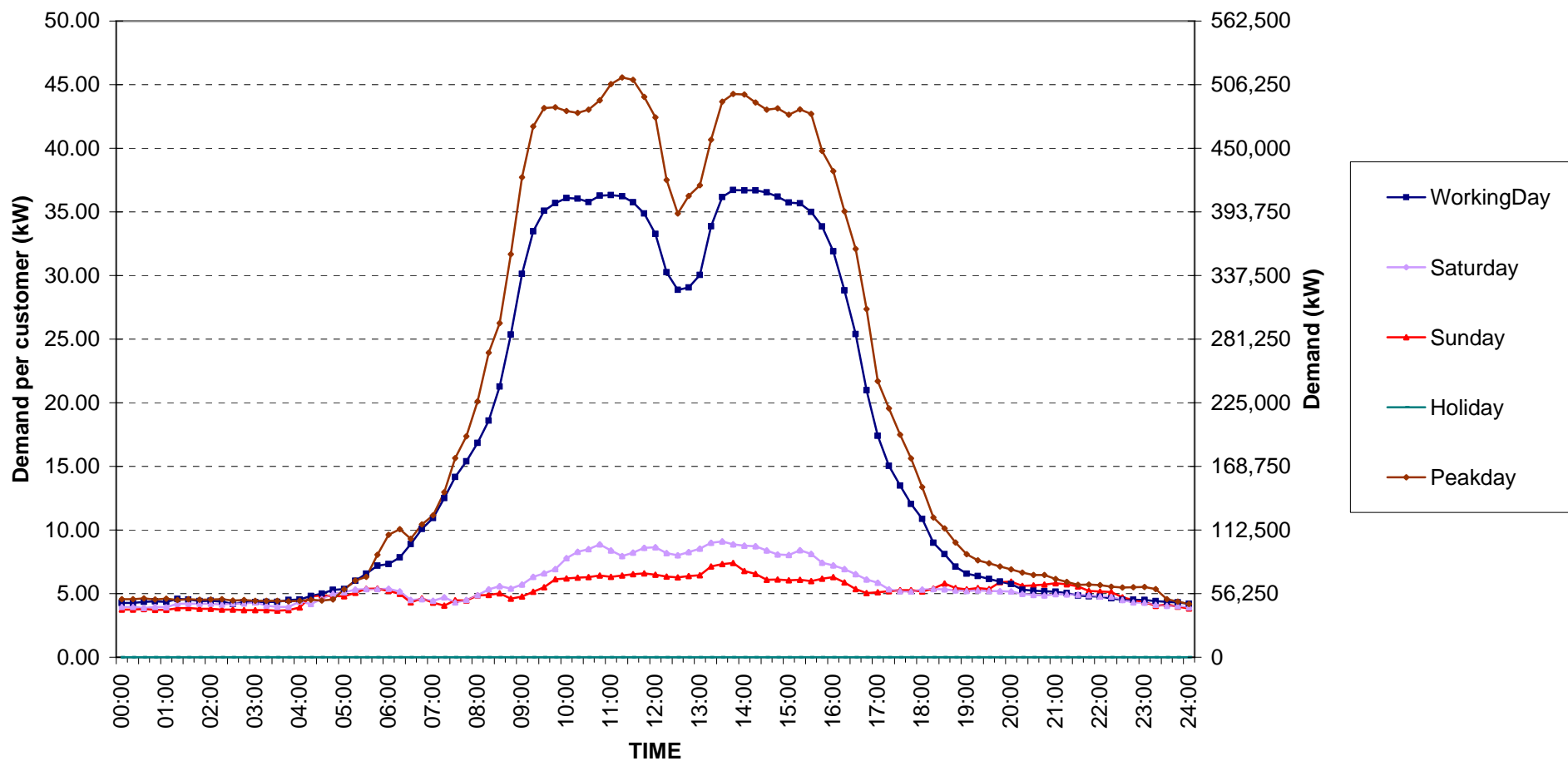
กราฟรูปที่ 7



Government institutions and non-profit organizations Load Profile

Date: 1 Nov, 2008 to 30 Nov, 2008

Number of sample customers = 68



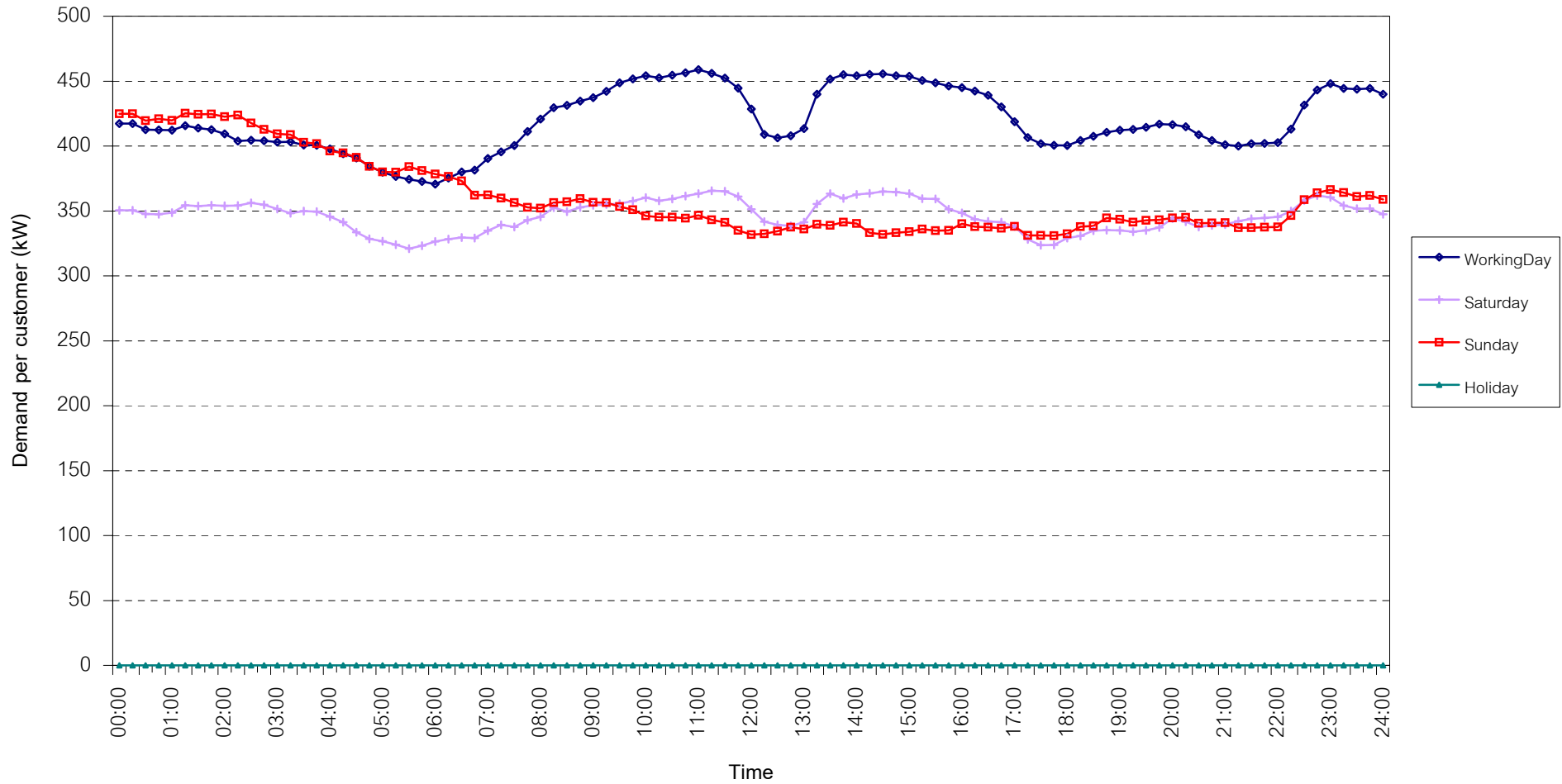
กราฟรูปที่ 8



TSIC 31 (Food Processing) Load Profile

Date: 1 Nov, 2008 to 30 Nov, 2008

Number of sample customers = 30



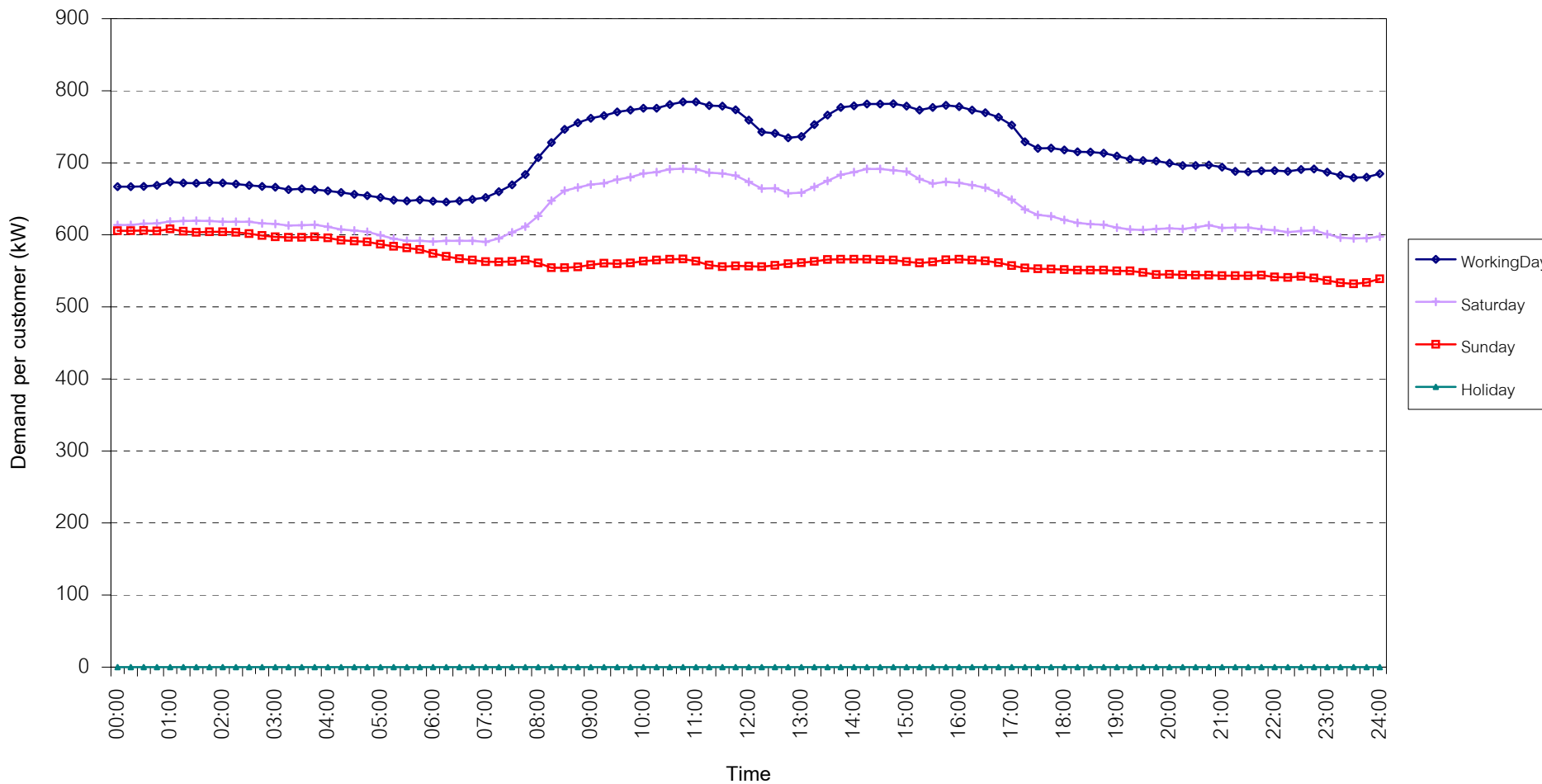
กราฟรูปที่ 9



TSIC 32 (Textiles) Load Profile

Date: 1 Nov, 2008 to 30 Nov, 2008

Number of sample customers = 63



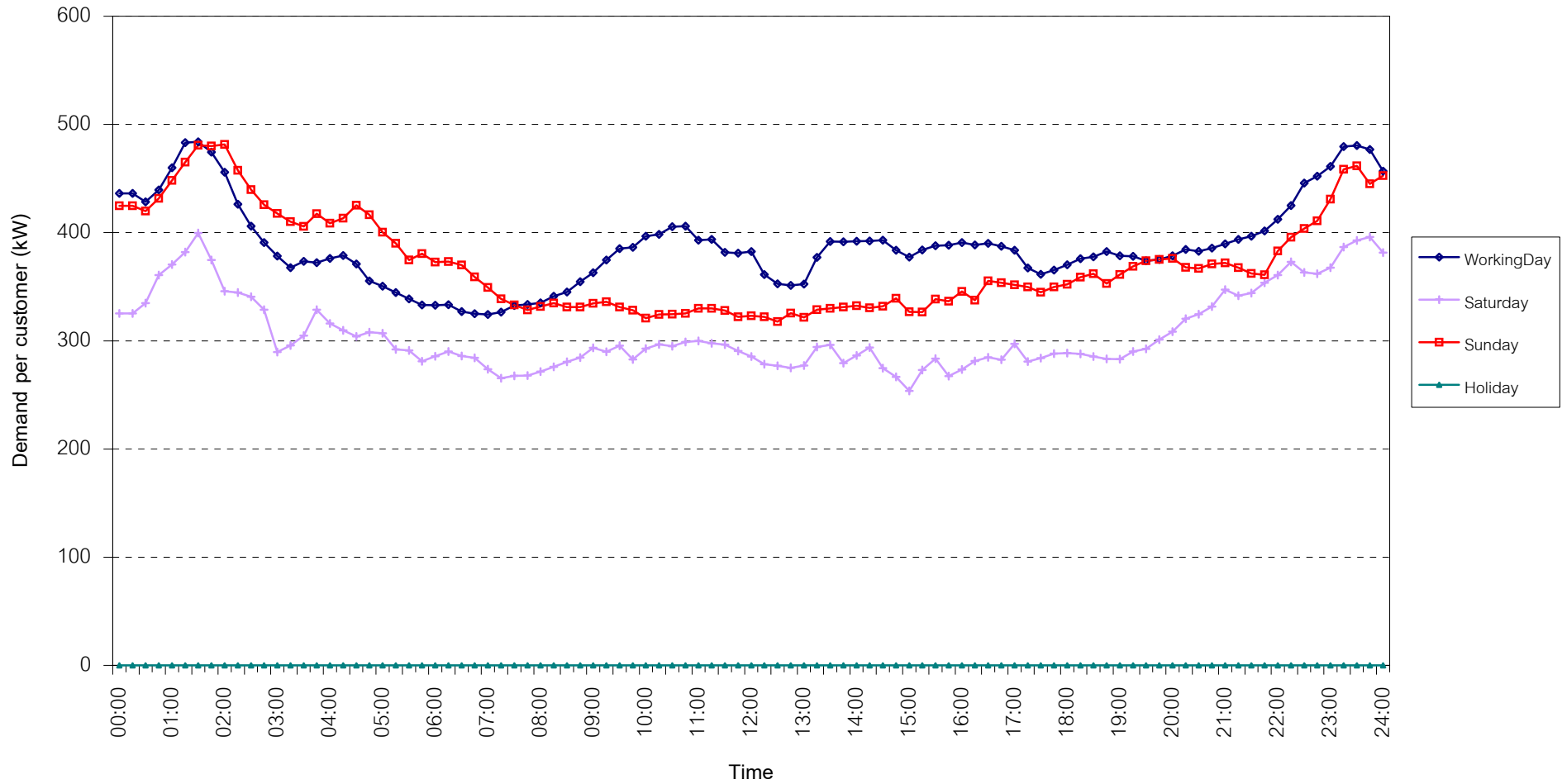
กราฟรูปที่ 10



TSIC 34 (Paper & Printing) Load Profile

Date: 1 Nov, 2008 to 30 Nov, 2008

Number of sample customers = 10



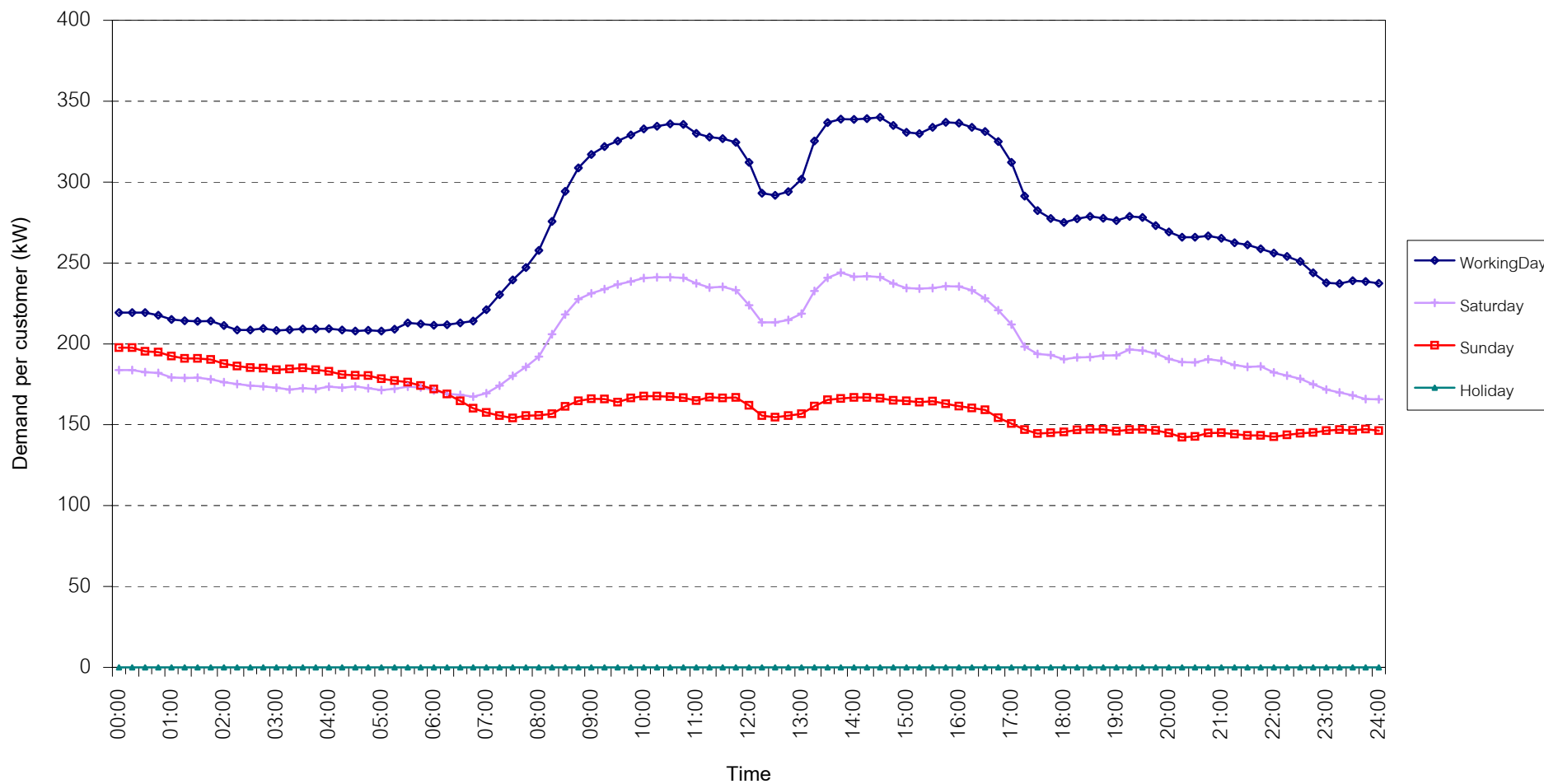
กราฟรูปที่ 11



TSIC 35 (Chemical & Petroleum) Load Profile

Date: 1 Nov, 2008 to 30 Nov, 2008

Number of sample customers = 62



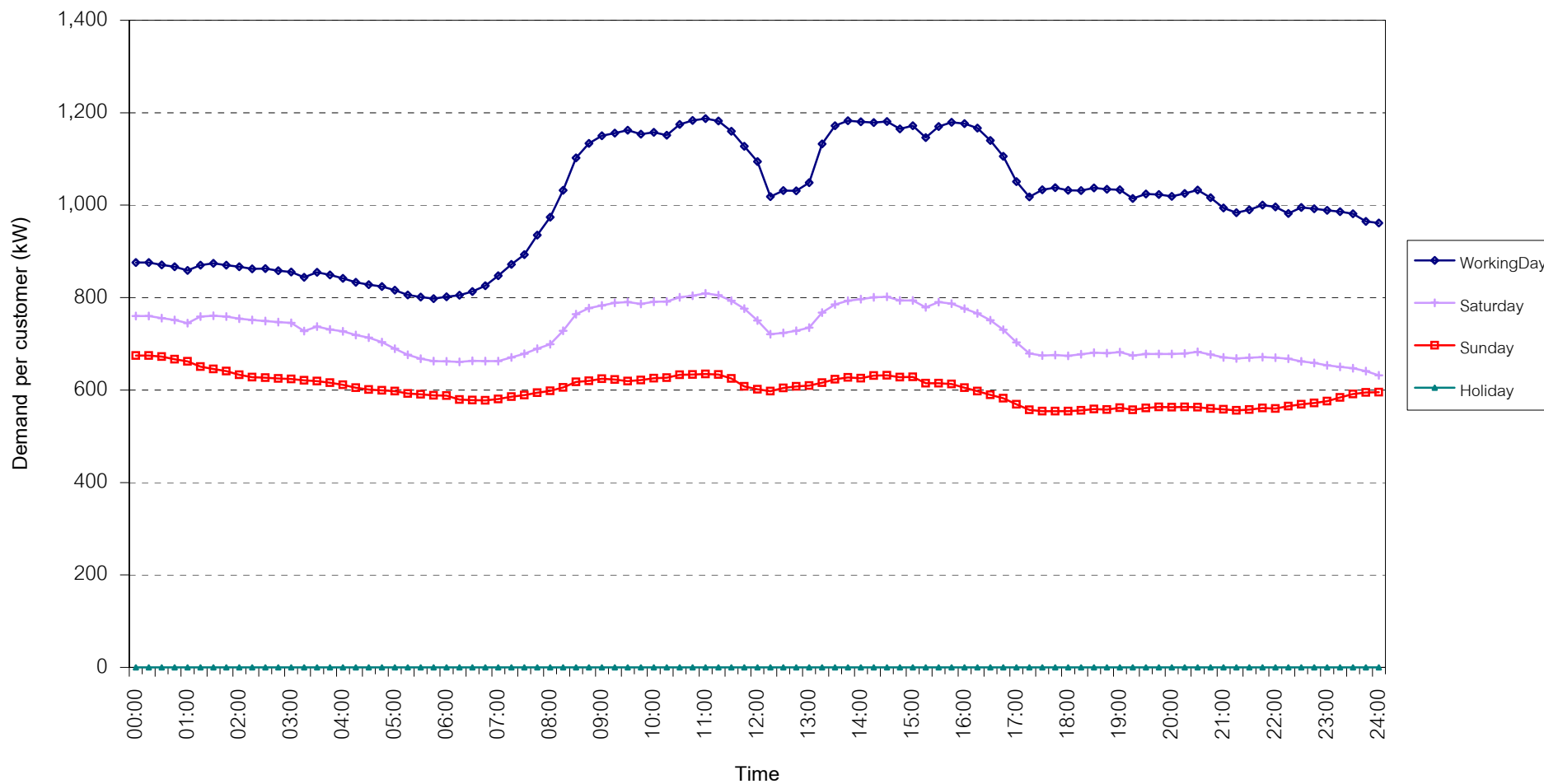
กราฟรูปที่ 12



TSIC 38 (Fabricated Metal Products) Load Profile

Date: 1 Nov, 2008 to 30 Nov, 2008

Number of sample customers = 61



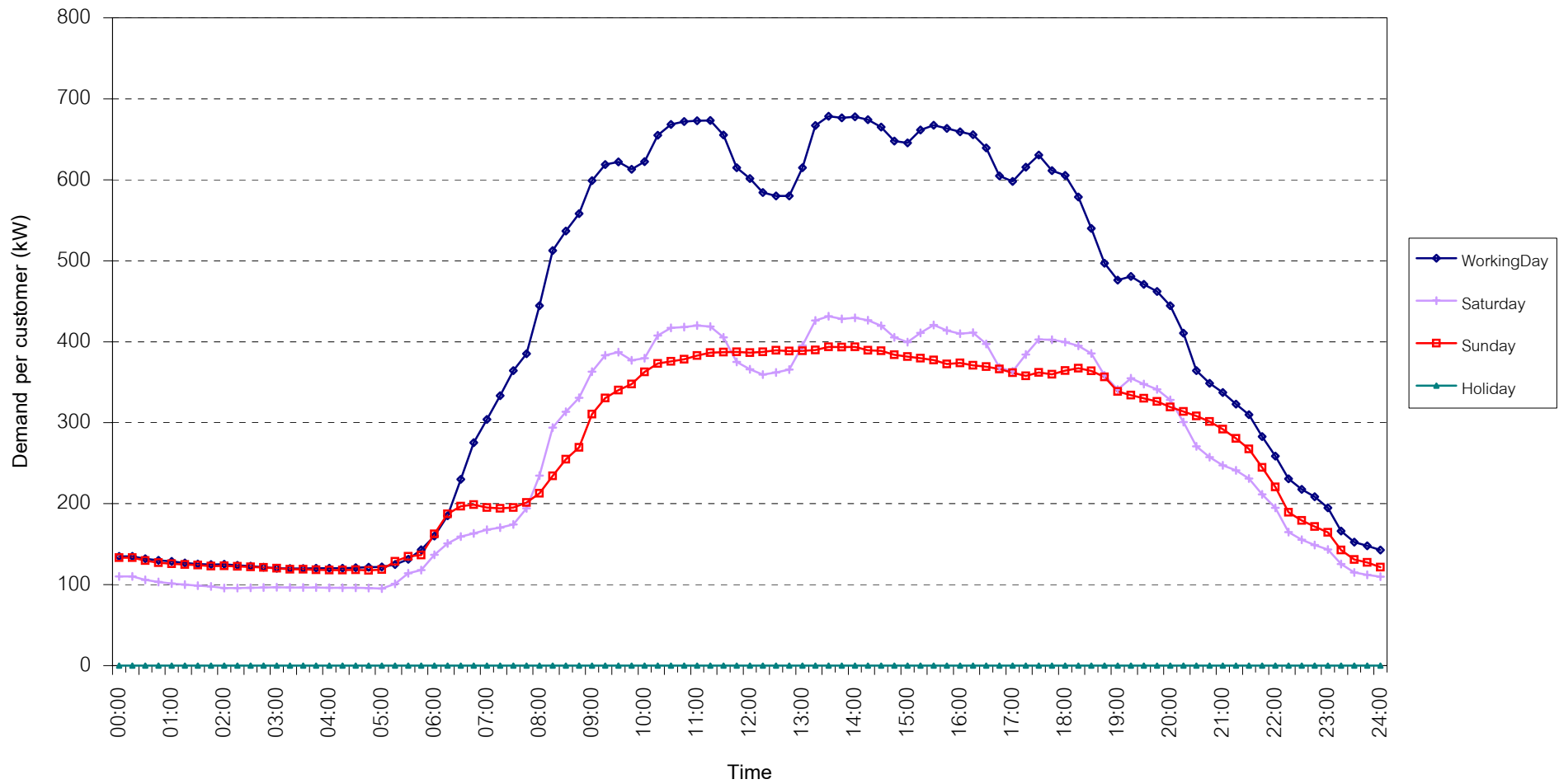
กราฟรูปที่ 13



TSIC 61 (Wholesale Trade) Load Profile

Date: 1 Nov, 2008 to 30 Nov, 2008

Number of sample customers = 8



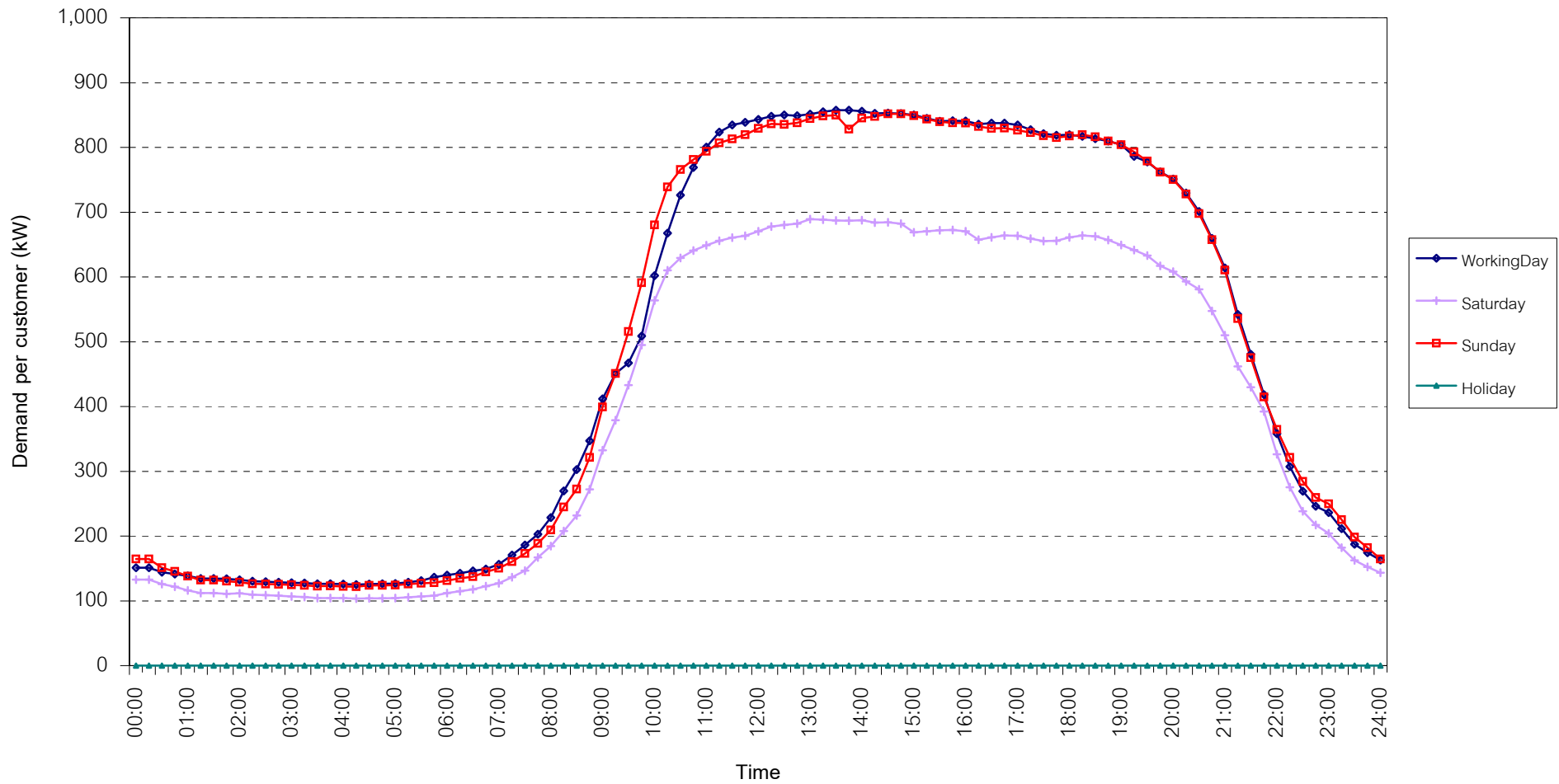
กราฟรูปที่ 14



TSIC 62 (Retail Trade) Load Profile

Date: 1 Nov, 2008 to 30 Nov, 2008

Number of sample customers = 73



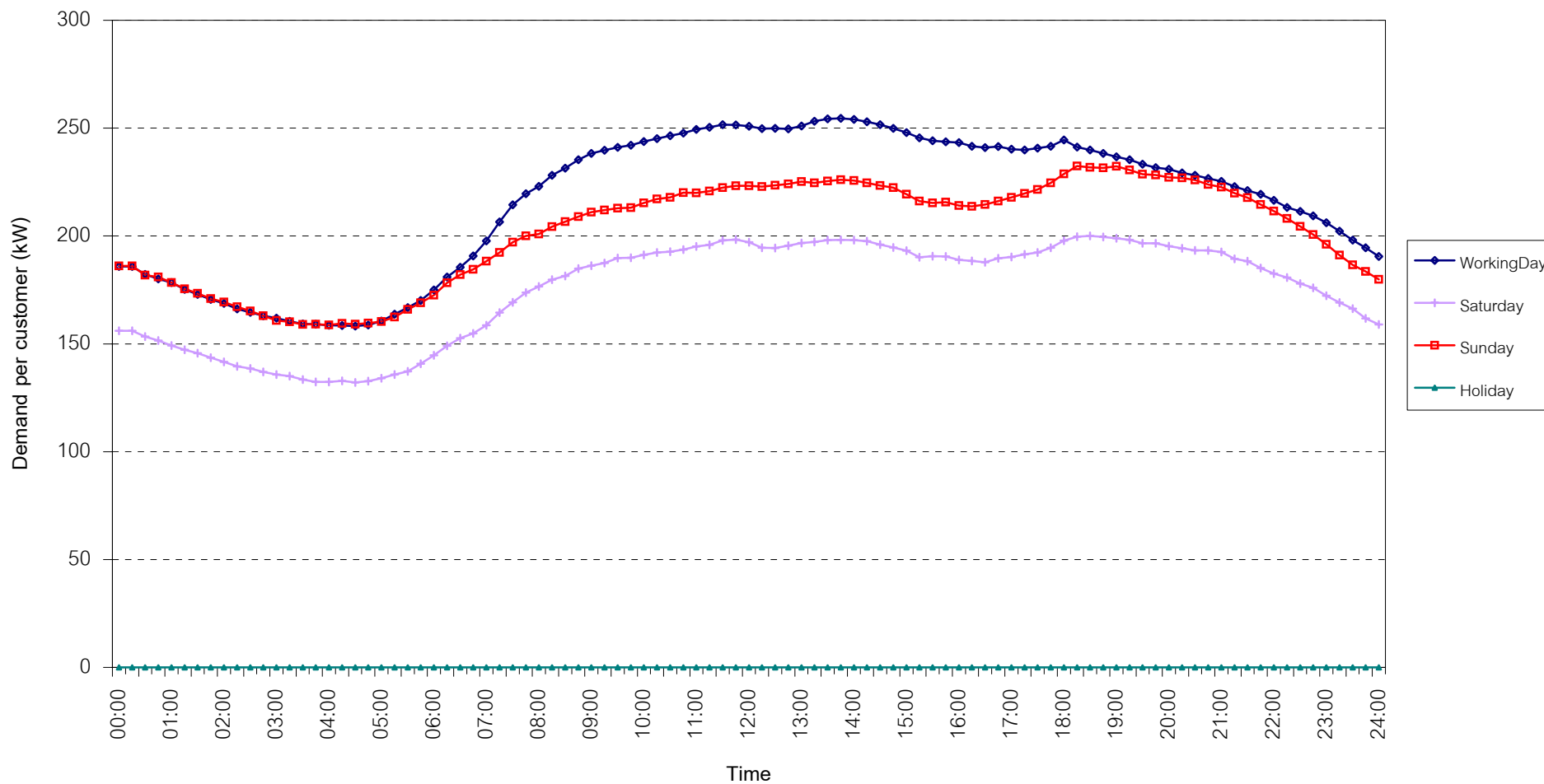
กราฟรูปที่ 15



TSIC 63 (Hotels and restaurants) Load Profile

Date: 1 Nov, 2008 to 30 Nov, 2008

Number of sample customers = 82



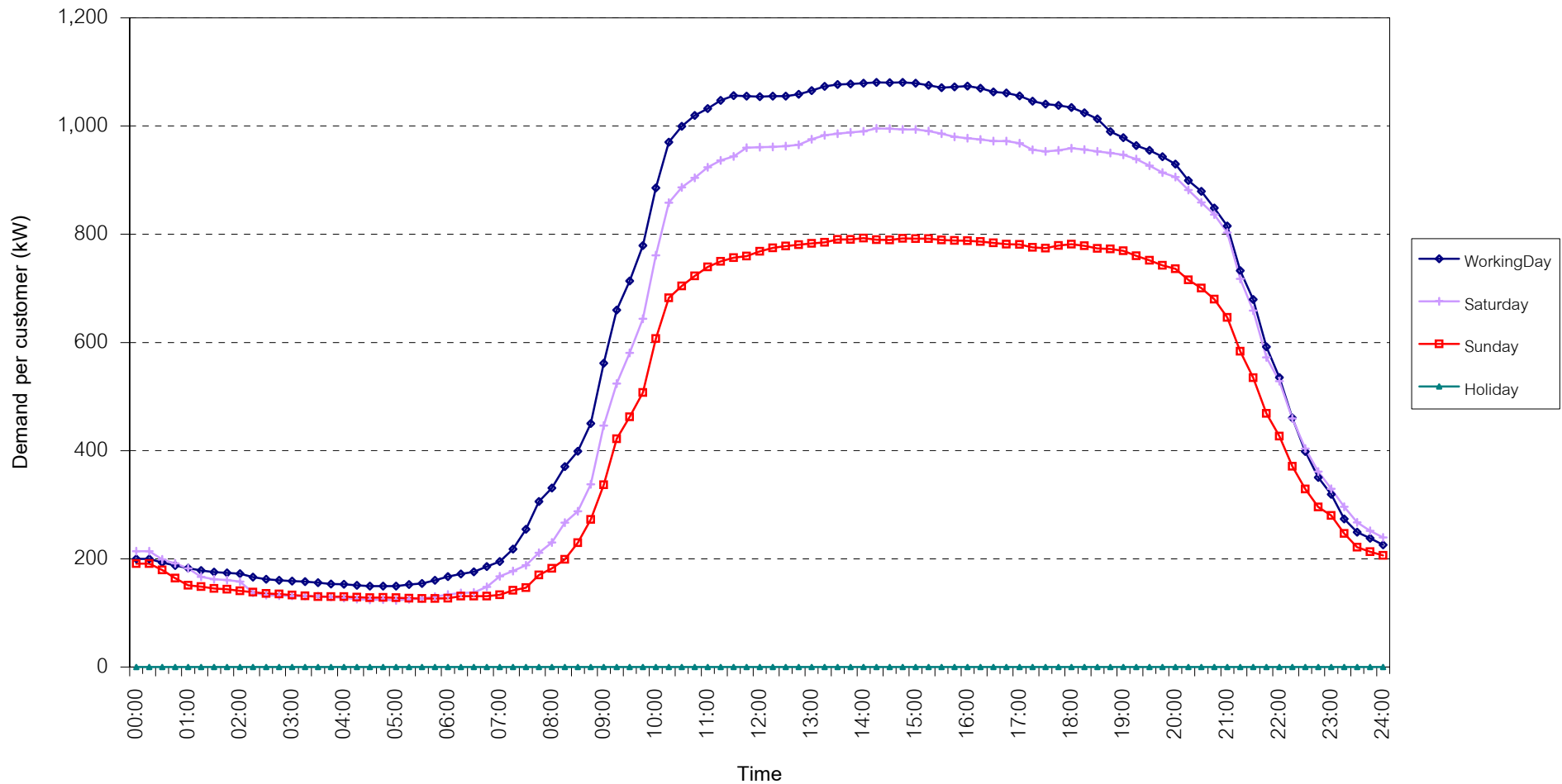
กราฟรูปที่ 16



TSIC 83 (Real Estate) Load Profile

Date: 1 Nov, 2008 to 30 Nov, 2008

Number of sample customers = 33



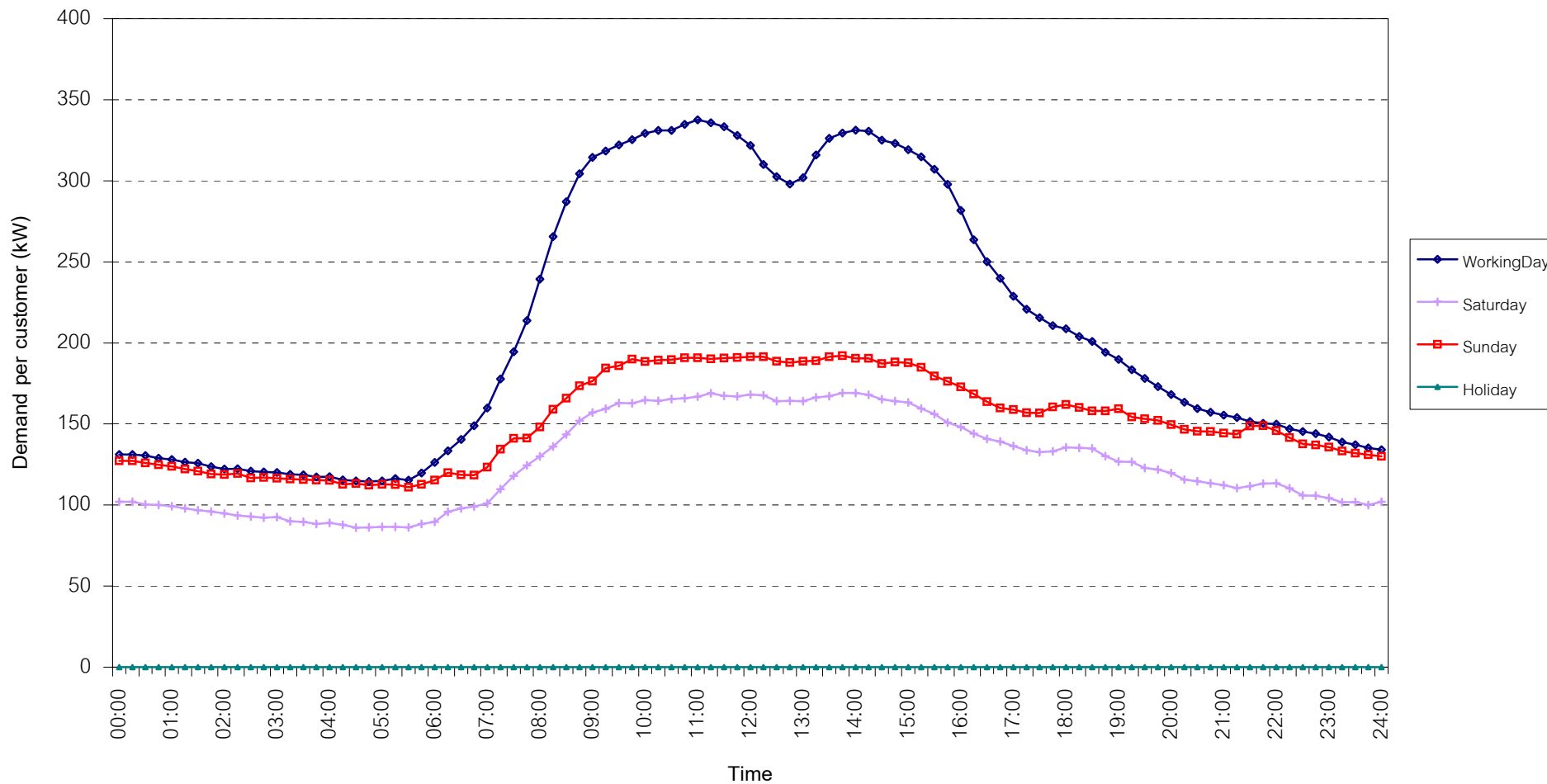
กราฟรูปที่ 17



TSIC 93 (Social Services) Load Profile

Date: 1 Nov, 2008 to 30 Nov, 2008

Number of sample customers = 21

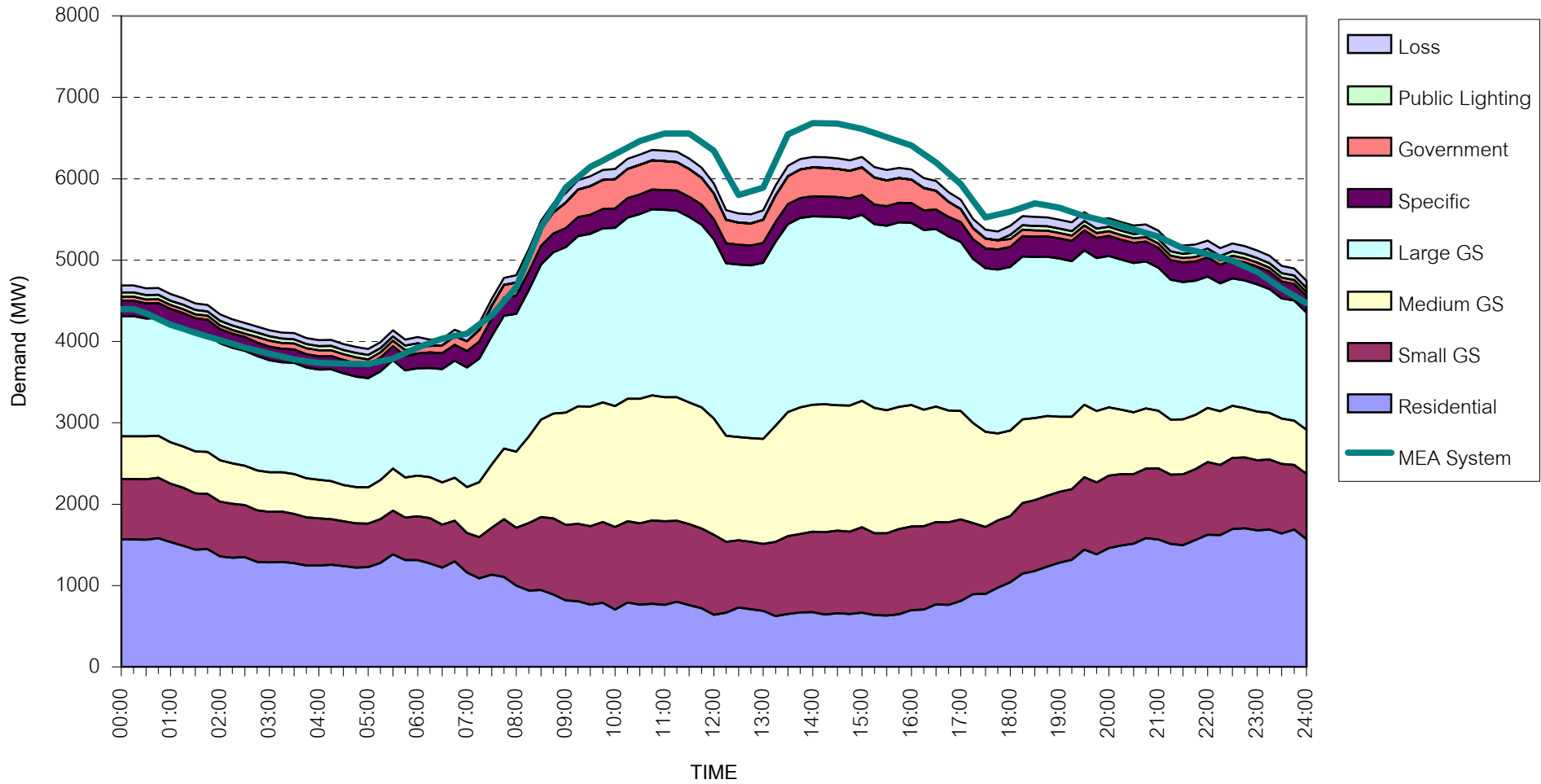


กราฟรูปที่ 18



MEA's System Load Profile

Peak Day 07 November, 2008 at 14:00



กราฟรูปที่ 19