



ข้อมูลการศึกษาลักษณะการใช้ไฟฟ้า เดือน กรกฎาคม 2551



Table 1-1

COINCIDENT WITH LOAD RESEARCH SYSTEM'S PEAK ON July 15,2008 time 15:45 6,960.82 MW
(MEA SYSTEM'S PEAK ON July 15,2008 time 14:30 7,299.16 MW)

| CLASS | Number of Customers | Kilowatt hours | Coincident Peak (MEA System Peak at time14:30) | | Coincident Peak (Load Research System Peak at time 13:45) | | Sector Diversified Demand | | |
|--|---------------------|----------------|--|------------------|---|------------------|---------------------------|-----------|-------|
| | | | MW | Contribution (%) | MW | Contribution (%) | Max MW. | Date | Time |
| Residential | 2,233,409 | 810,090,394 | 800.48 | 11.54 | 826.66 | 11.88 | 1,994.30 | 14 Jul 08 | 23:00 |
| Small General Service | 478,551 | 537,390,494 | 968.69 | 13.96 | 1,052.00 | 15.11 | 1,207.02 | 30 Jul 08 | 11:30 |
| Medium General Service | 19,838 | 686,995,939 | 1,665.86 | 24.01 | 1,617.35 | 23.23 | 1,771.17 | 16 Jul 08 | 14:45 |
| Large General Service | 1,624 | 1,344,627,307 | 2,524.70 | 36.39 | 2,511.60 | 36.08 | 2,589.88 | 15 Jul 08 | 13:45 |
| Specific Business | 2,297 | 158,111,862 | 268.00 | 3.86 | 260.08 | 3.74 | 266.73 | 15 Jul 08 | 13:30 |
| Government and non Profit organization | 10,920 | 112,960,089 | 398.64 | 5.75 | 387.16 | 5.56 | 464.83 | 14 Jul 08 | 13:45 |
| Public Lighting | - | 19,811,755 | 0.00 | 0.00 | 0.00 | 0.00 | 51.62 | - | - |
| Loss | - | 169,077,424 | 311.58 | 4.49 | 305.98 | 4.40 | 311.58 | 15 Jul 08 | 14:30 |
| TOTAL | 2,746,639 | 3,839,065,264 | 6,937.95 | 100 | 6,960.82 | 100 | 6,960.82 | 15 Jul 08 | 15:45 |



Table 1-2

Number of sample customers on July, 2008

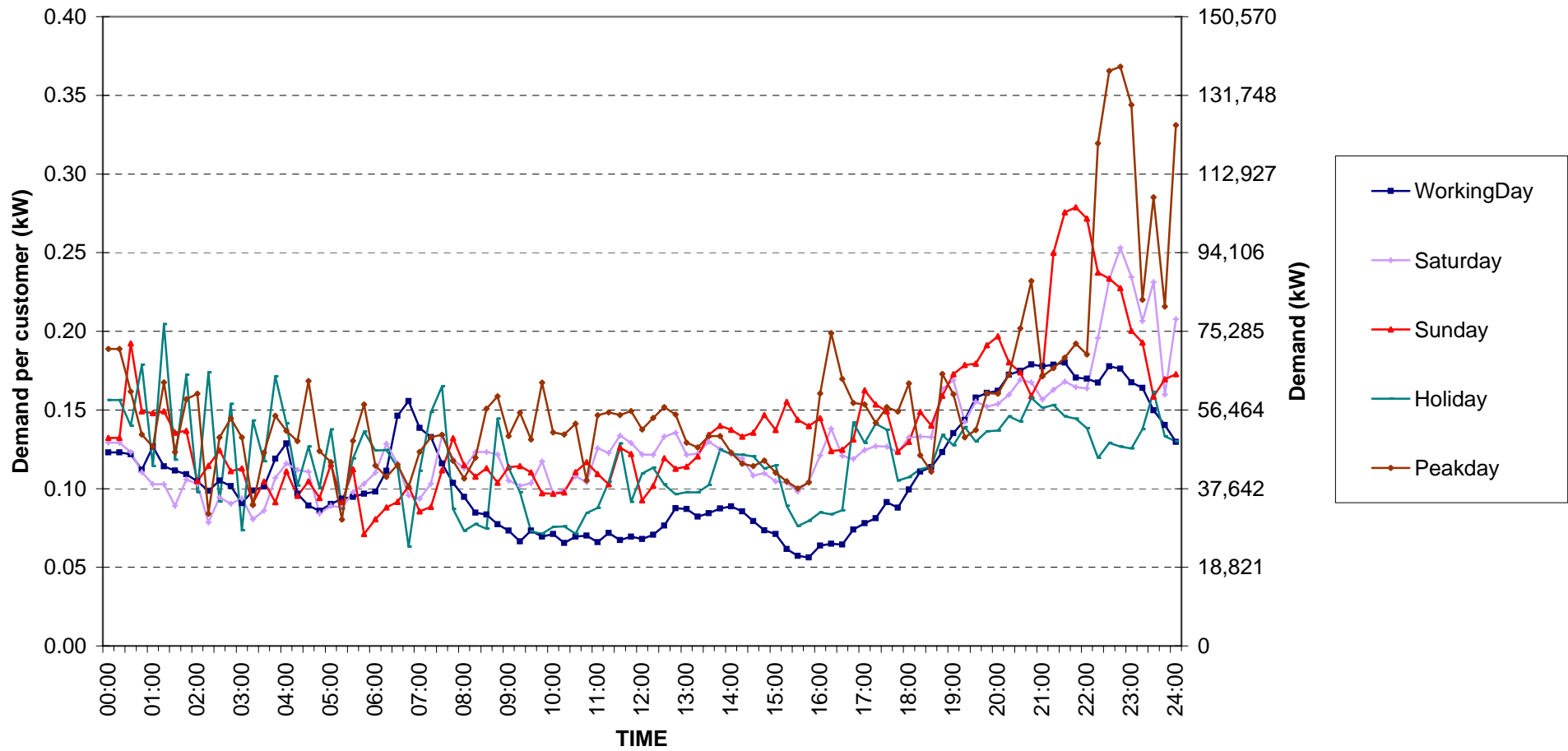
| CLASS | Number of sample customers (Target) | Number of sample customers (Collected) |
|--|--|---|
| Residential | 191 | 191 |
| Small General Service | 297 | 297 |
| Medium General Service | 163 | 163 |
| Large General Service | 328 | 328 |
| Specific Business | 76 | 76 |
| Government and Non-profit Organization | 68 | 68 |
| TOTAL | 1,123 | 1,123 |



Residential (Energy Consumption less than 150 kWh per month)

Date: 1 Jul, 2008 to 31 Jul, 2008

Number of sample customers = 10



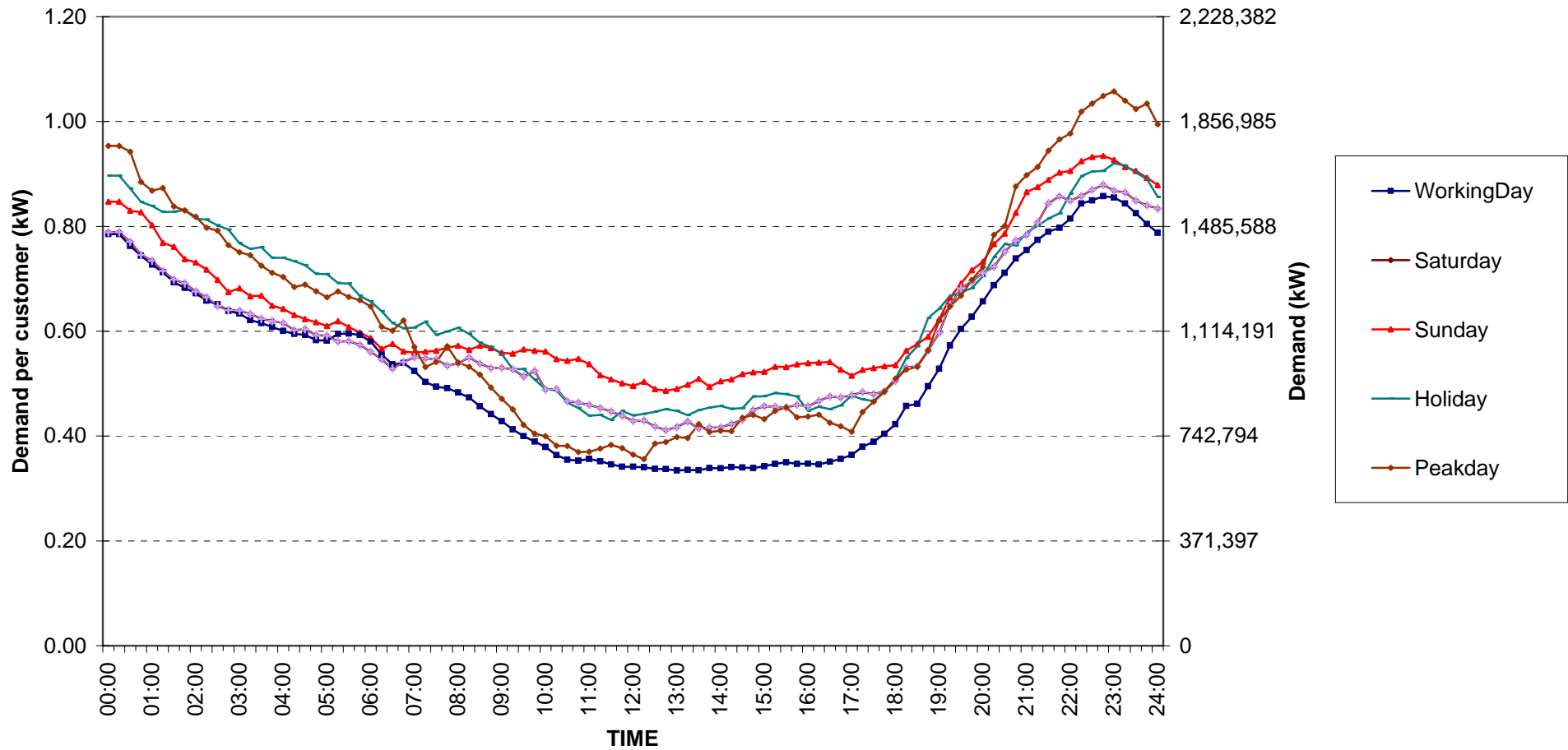
กราฟรูปที่ 1



Residential (Energy Consumption more than 150 kWh per month)

Date: 1 Jul, 2008 to 31 Jul, 2008

Number of sample customers = 181



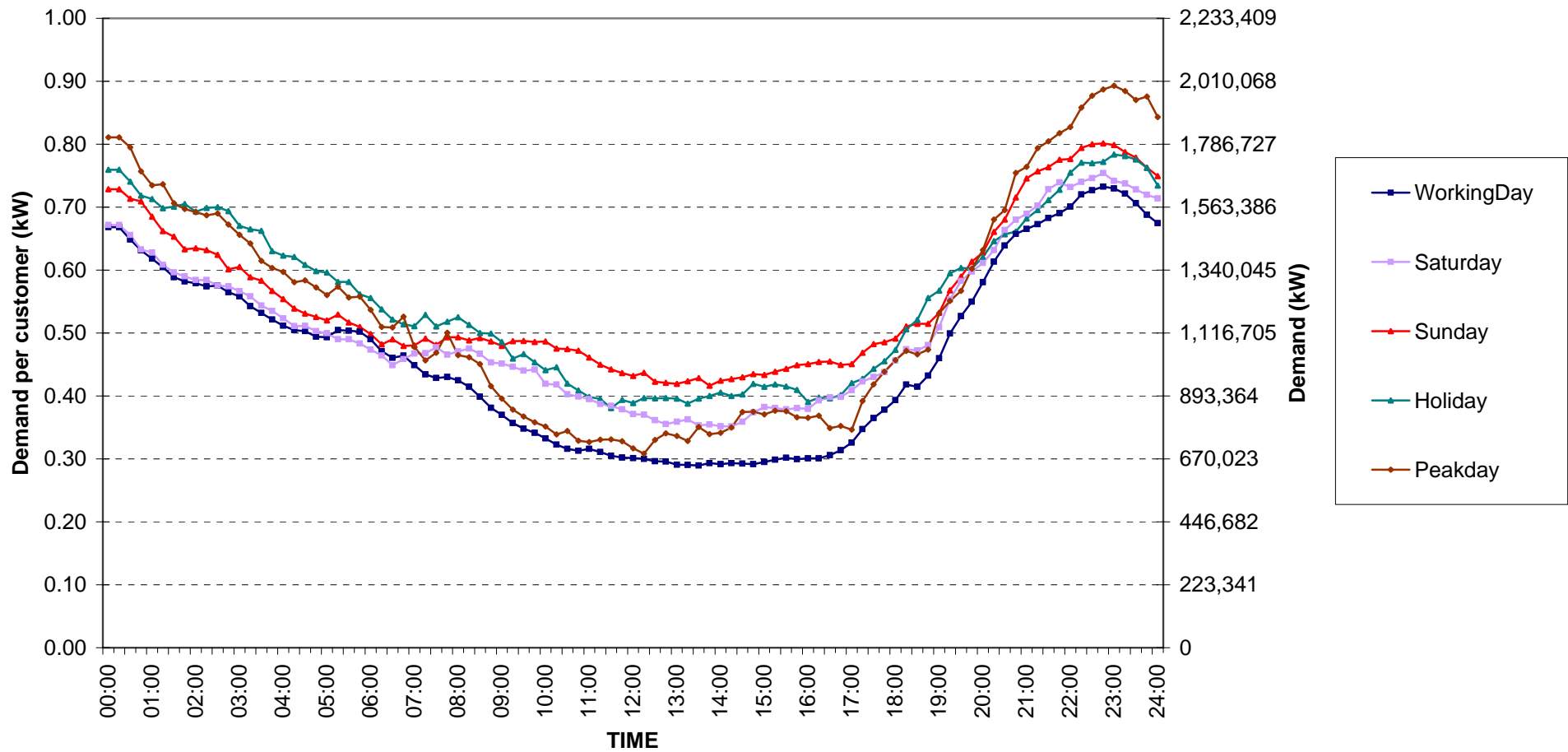
กราฟรูปที่ 2



Residential Load Profile

Date: 1 Jul, 2008 to 31 Jul, 2008

Number of sample customers = 191



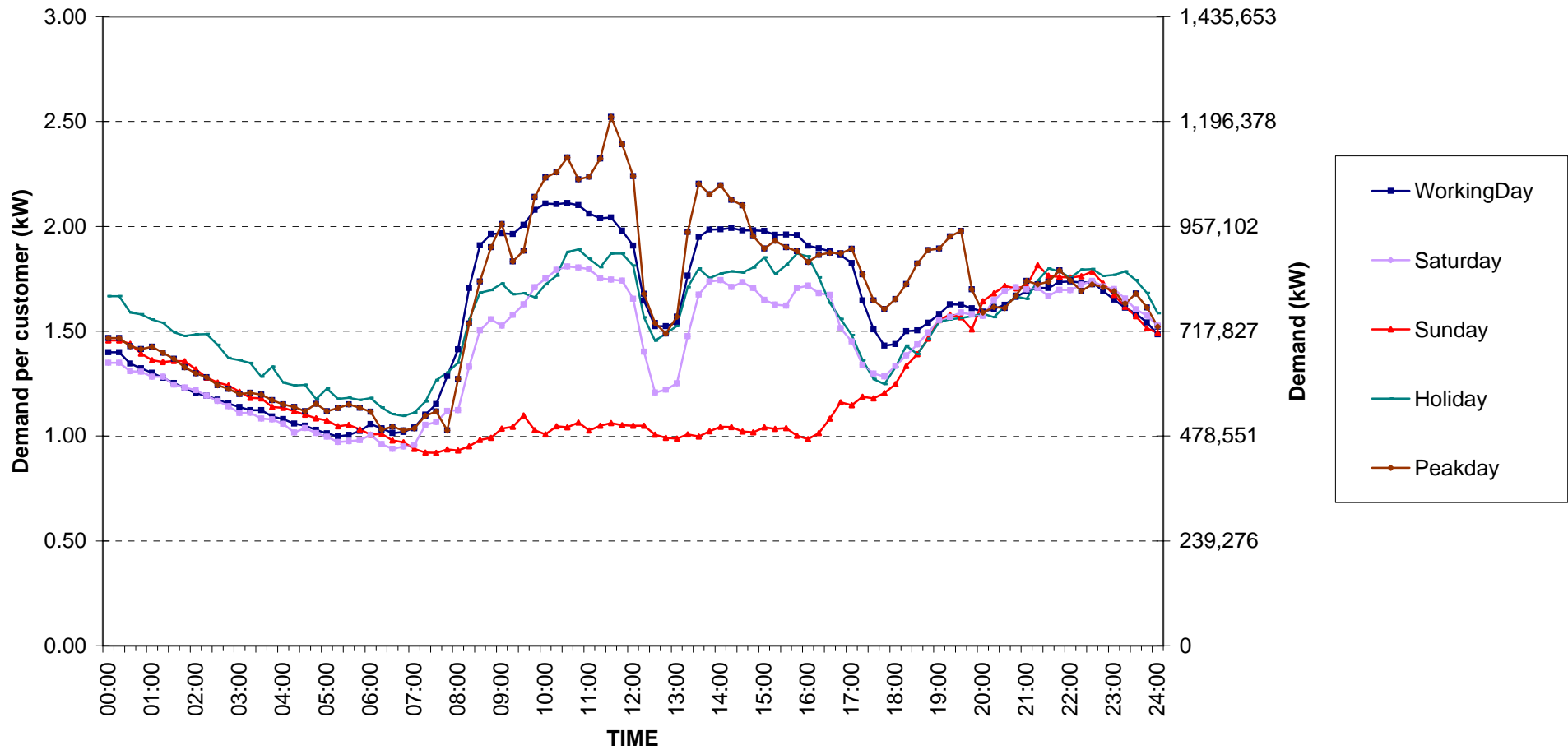
กราฟรูปที่ 3



Small General Services Load Profile

Date: 1 Jul, 2008 to 31 Jul, 2008

Number of sample customers = 297



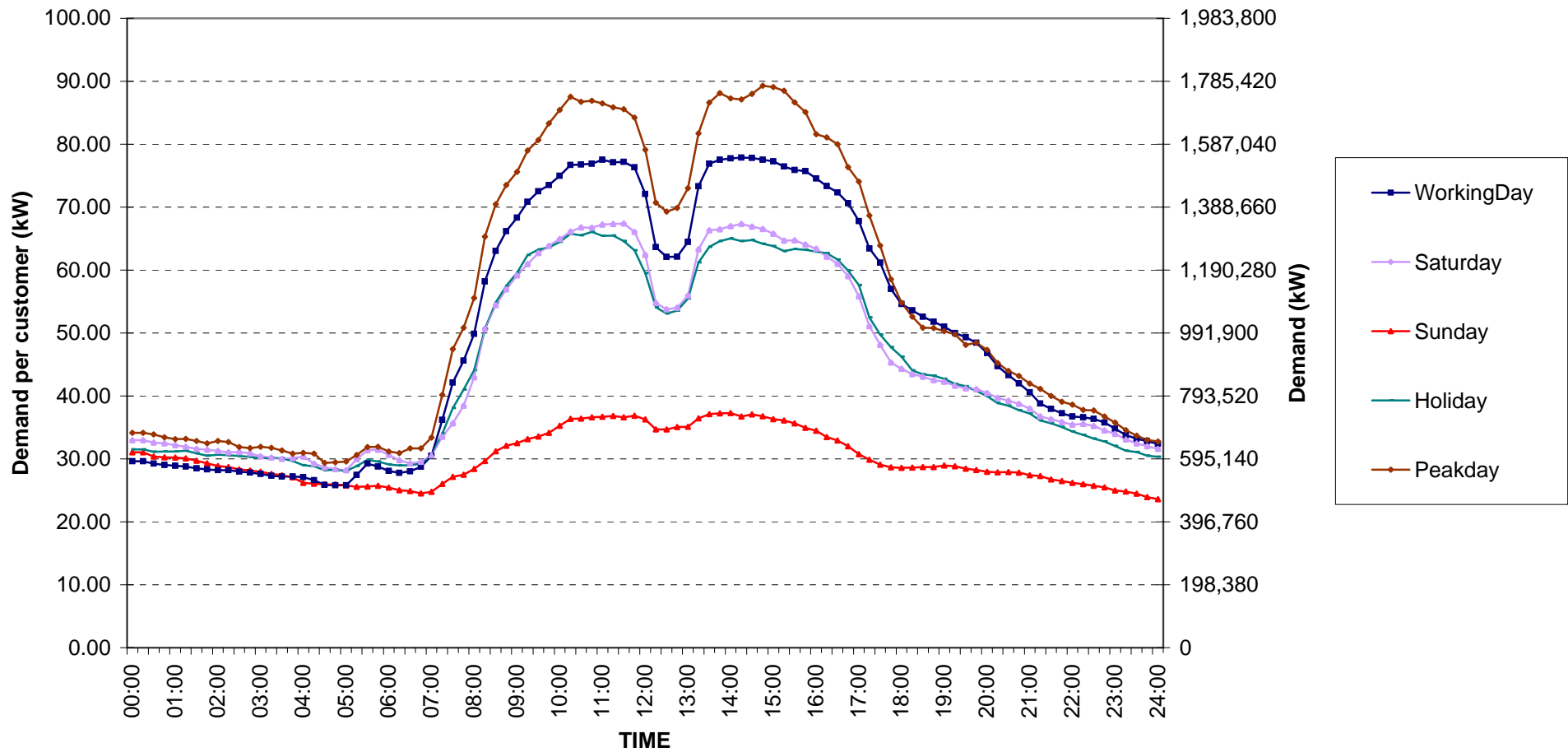
กราฟรูปที่ 4



Medium General Services Load Profile

Date: 1 Jul, 2008 to 31 Jul, 2008

Number of sample customers = 163



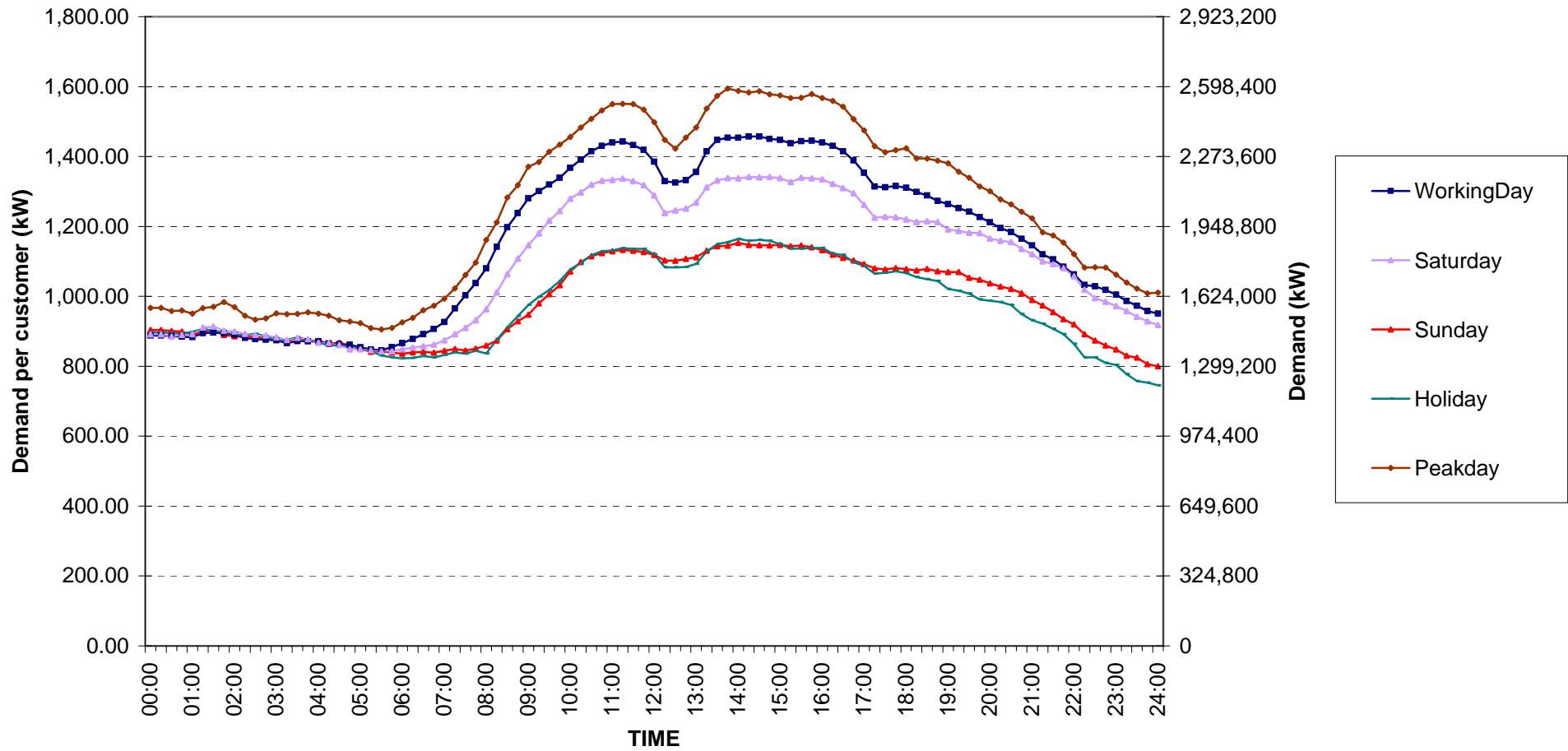
กราฟรูปที่ 5



Large General Services Load Profile

Date: 1 Jul, 2008 to 31 Jul, 2008

Number of sample customers = 328



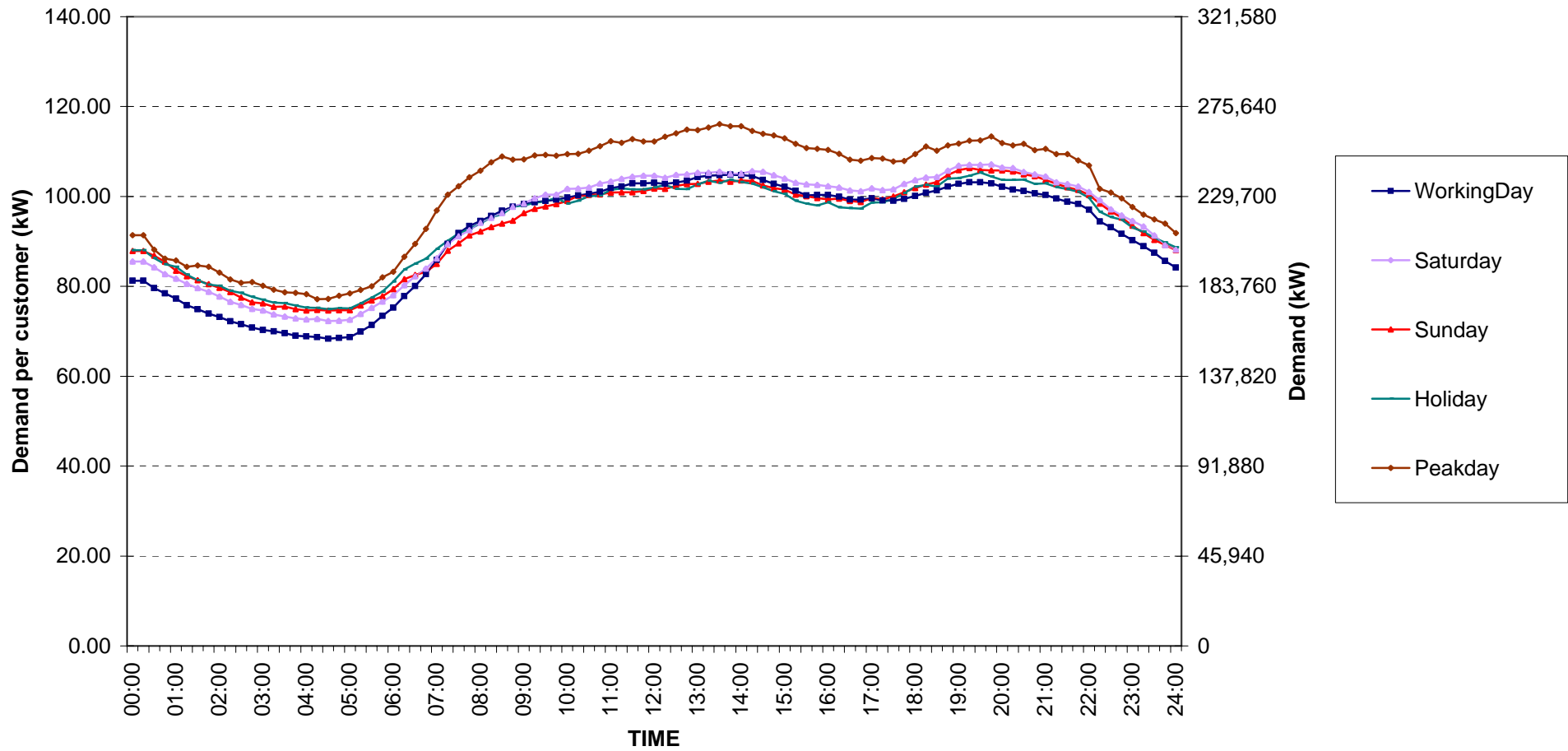
กราฟรูปที่ 6



Specific Business Load Profile

Date: 1 Jul, 2008 to 31 Jul, 2008

Number of sample customers = 76



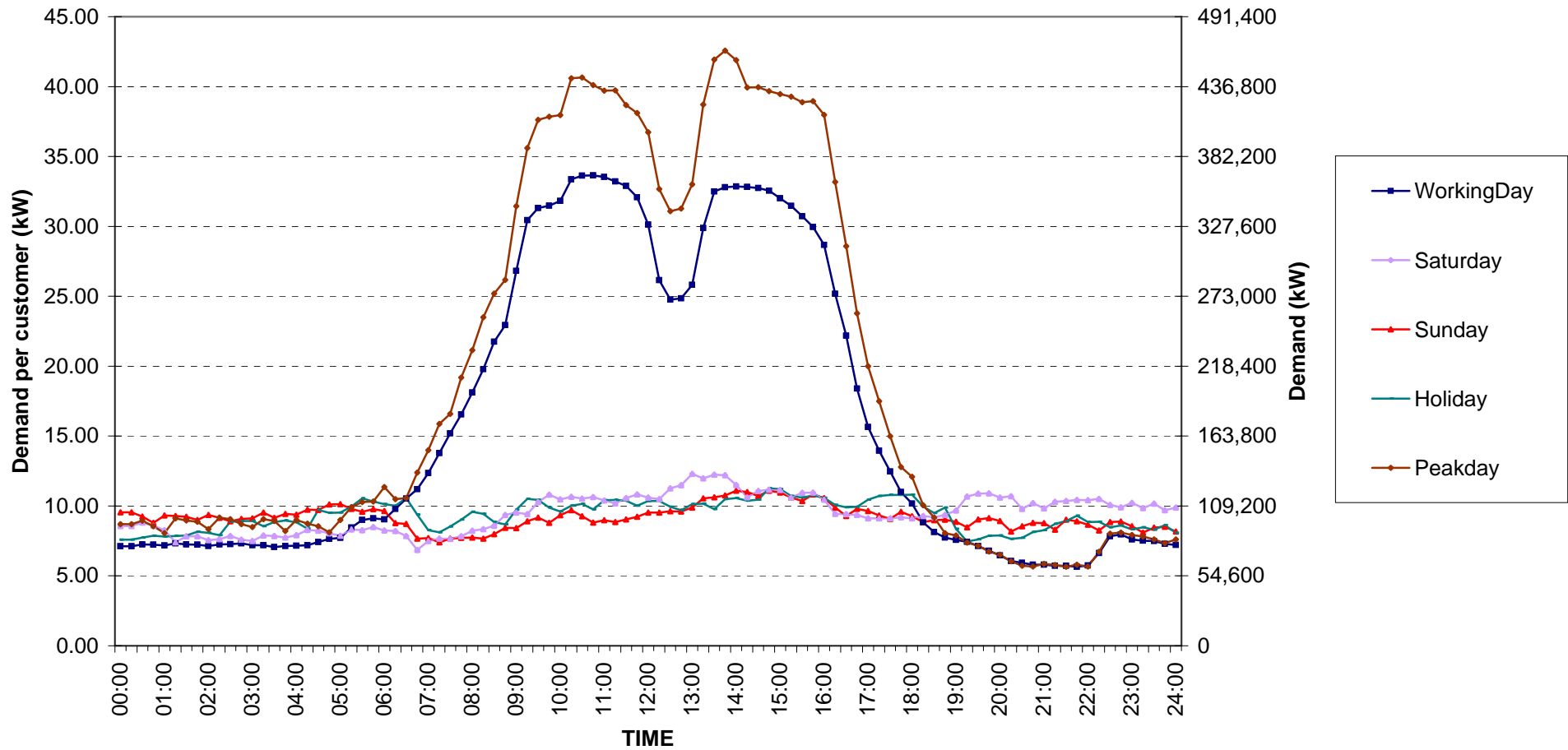
กราฟรูปที่ 7



Government institutions and non-profit organizations Load Profile

Date: 1 Jul, 2008 to 31 Jul, 2008

Number of sample customers = 68



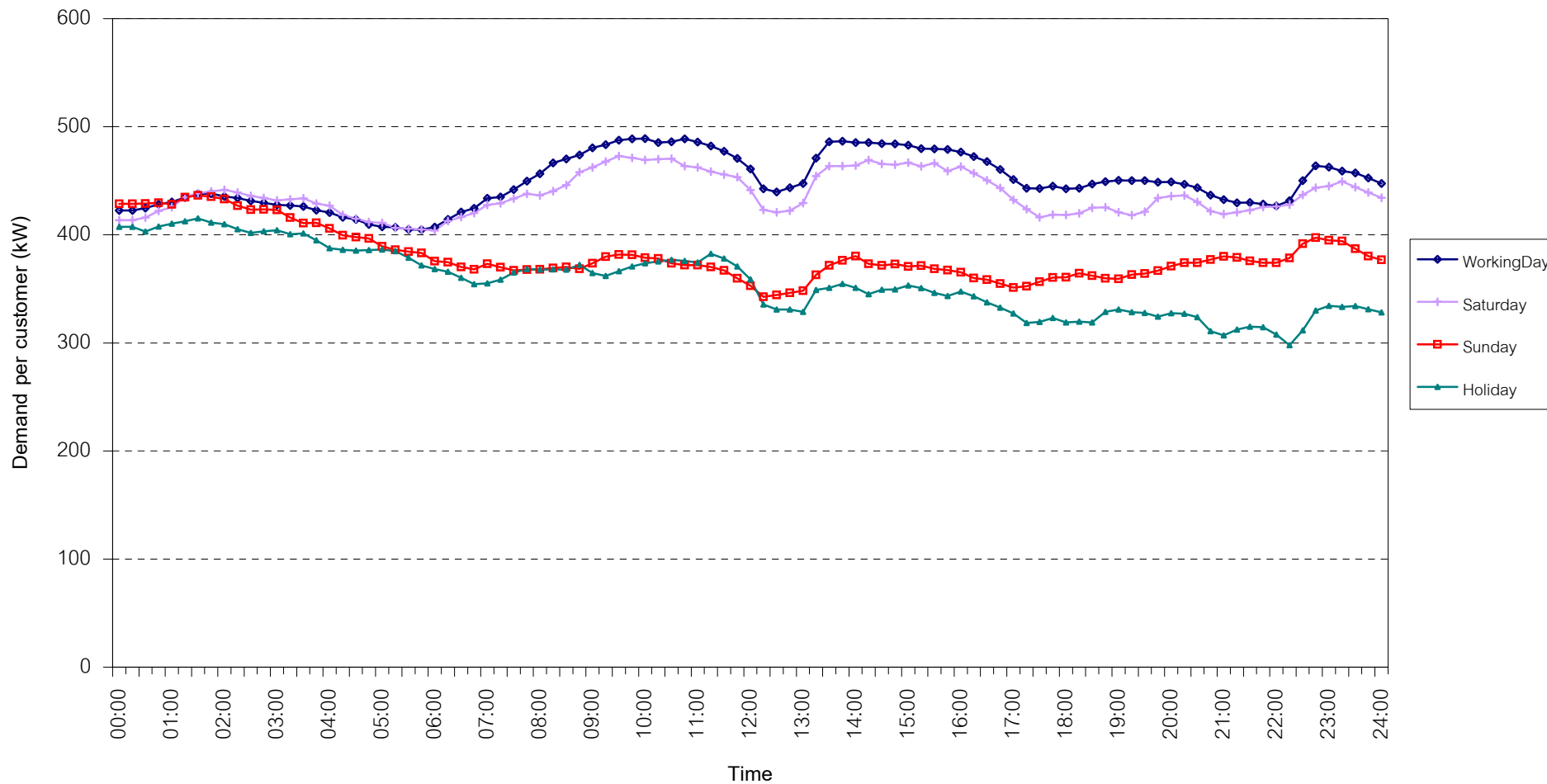
กราฟรูปที่ 8



TSIC 31 (Food Processing) Load Profile

Date: 1 Jul, 2008 to 31 Jul, 2008

Number of sample customers = 30



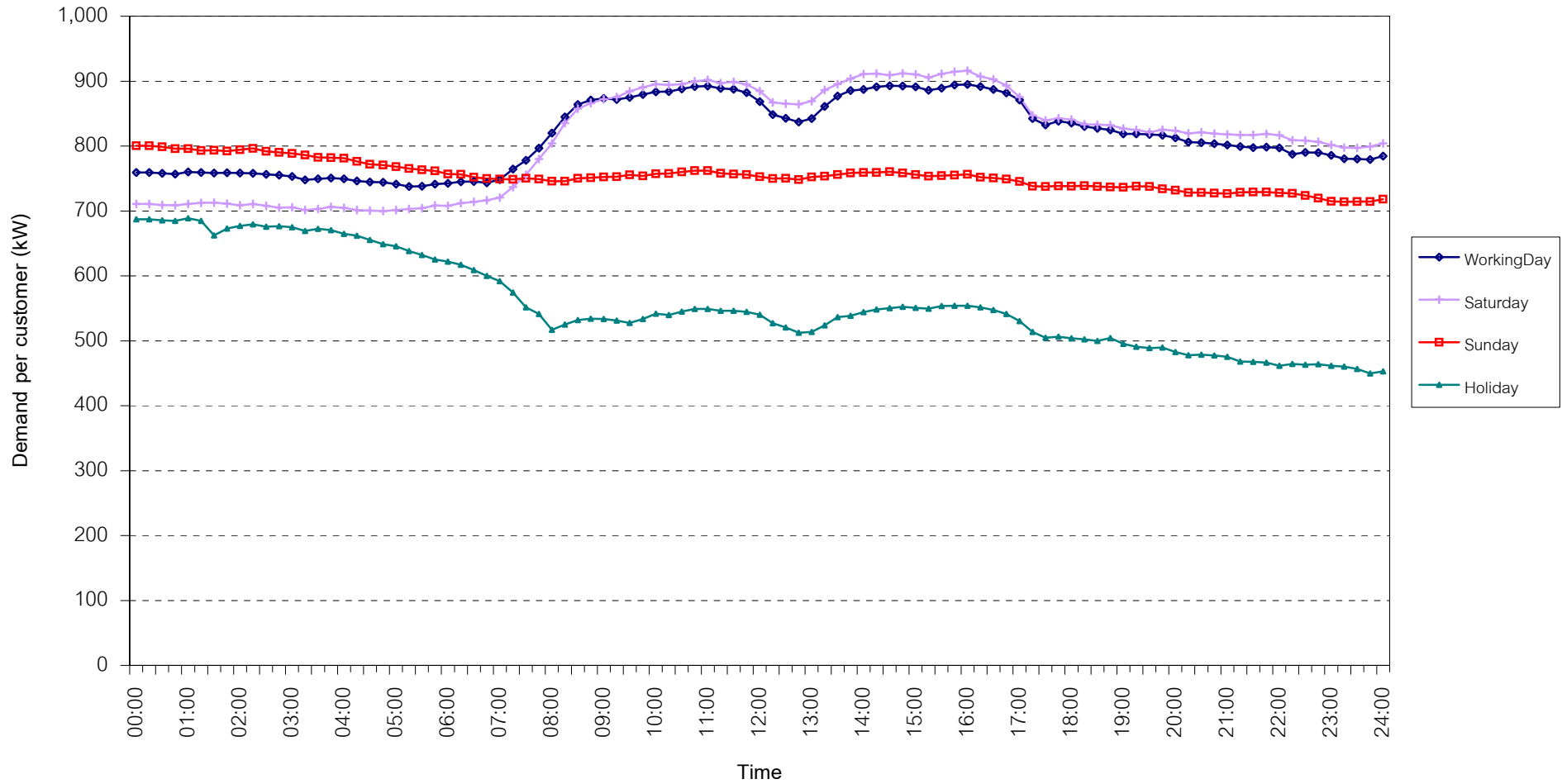
กราฟรูปที่ 9



TSIC 32 (Textiles) Load Profile

Date: 1 Jul, 2008 to 31 Jul, 2008

Number of sample customers = 63



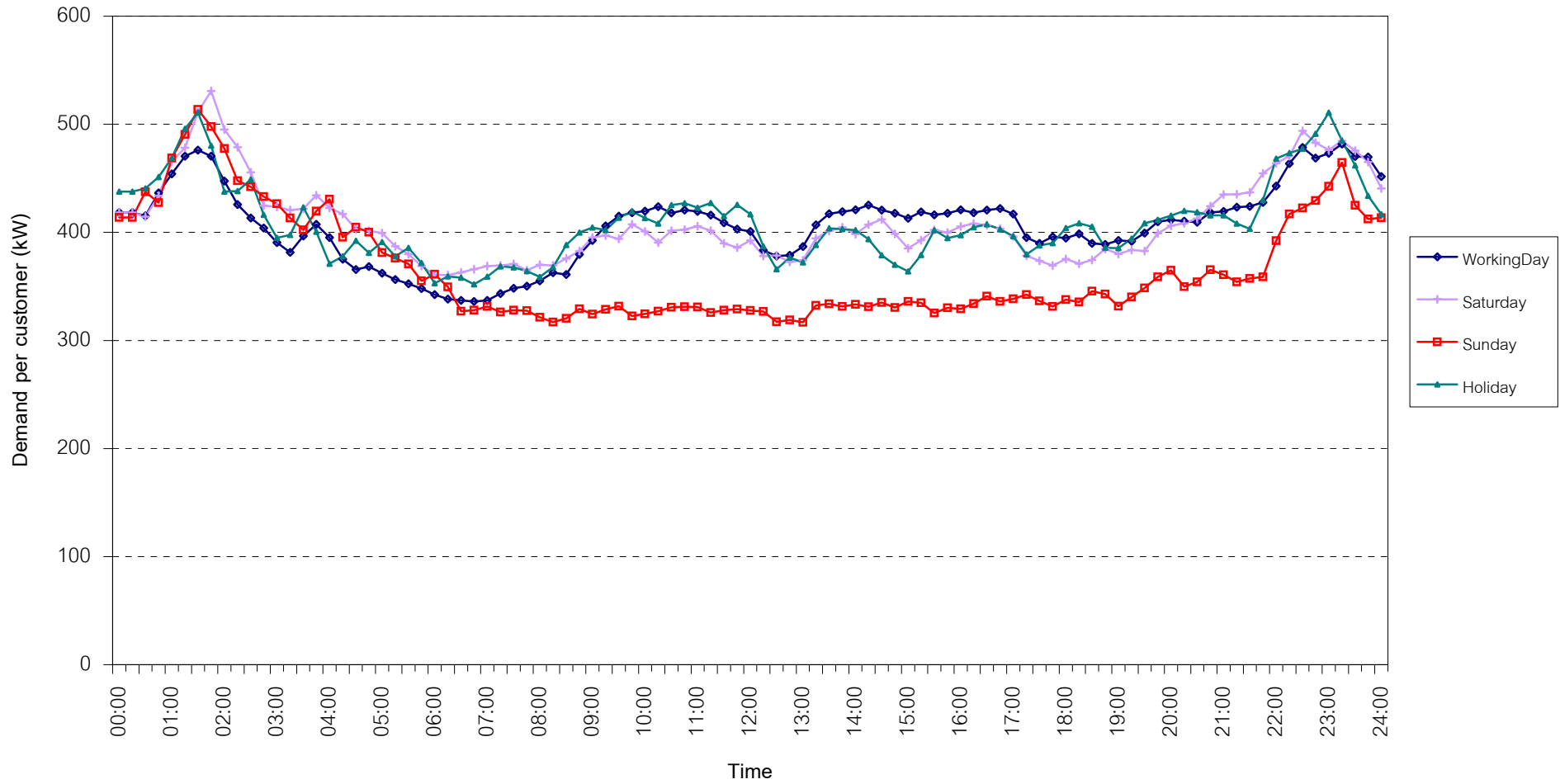
กราฟรูปที่ 10



TSIC 34 (Paper & Printing) Load Profile

Date: 1 Jul, 2008 to 31 Jul, 2008

Number of sample customers = 10



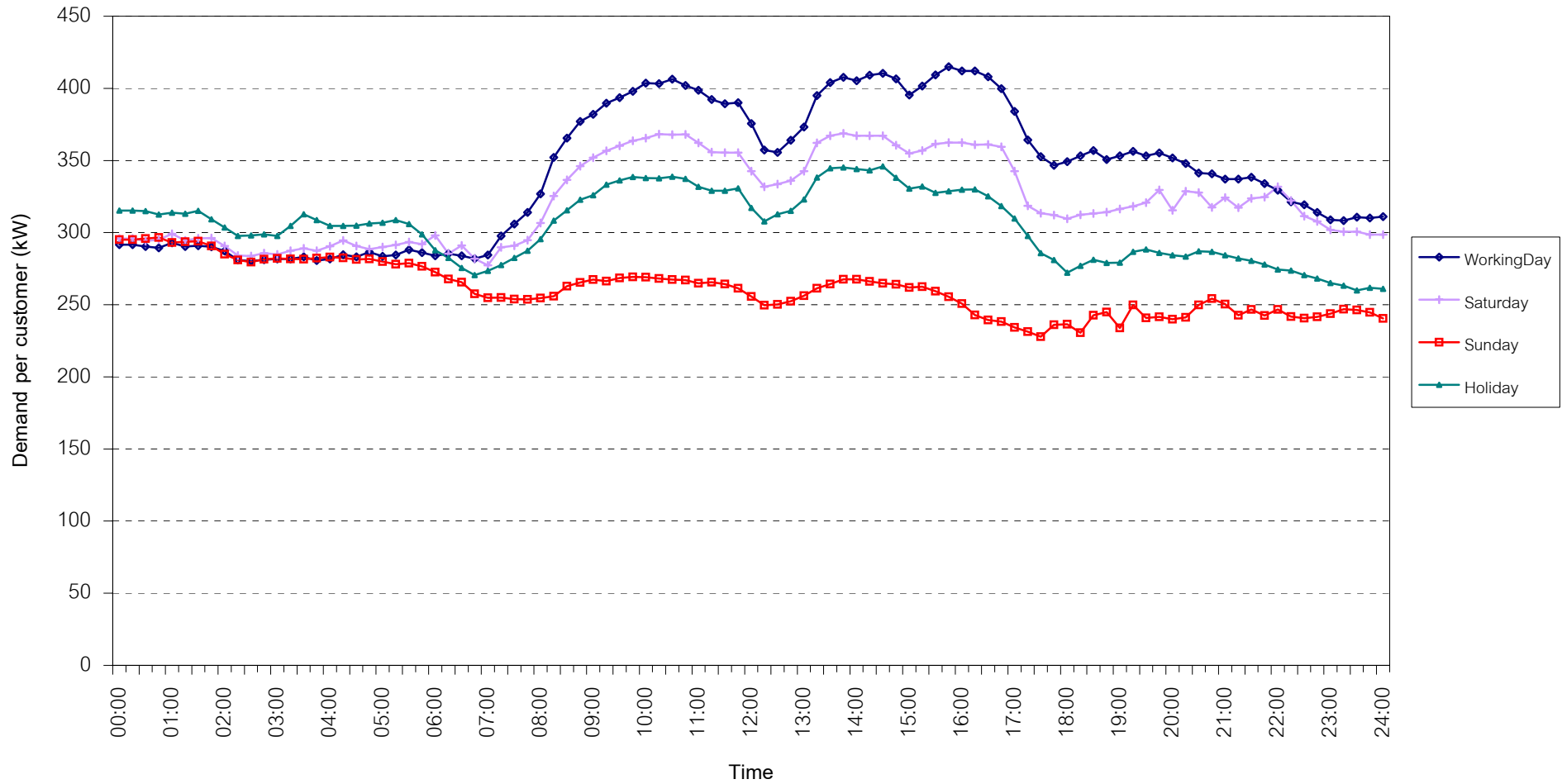
กราฟรูปที่ 11



TSIC 35 (Chemical & Petroleum) Load Profile

Date: 1 Jul, 2008 to 31 Jul, 2008

Number of sample customers = 62



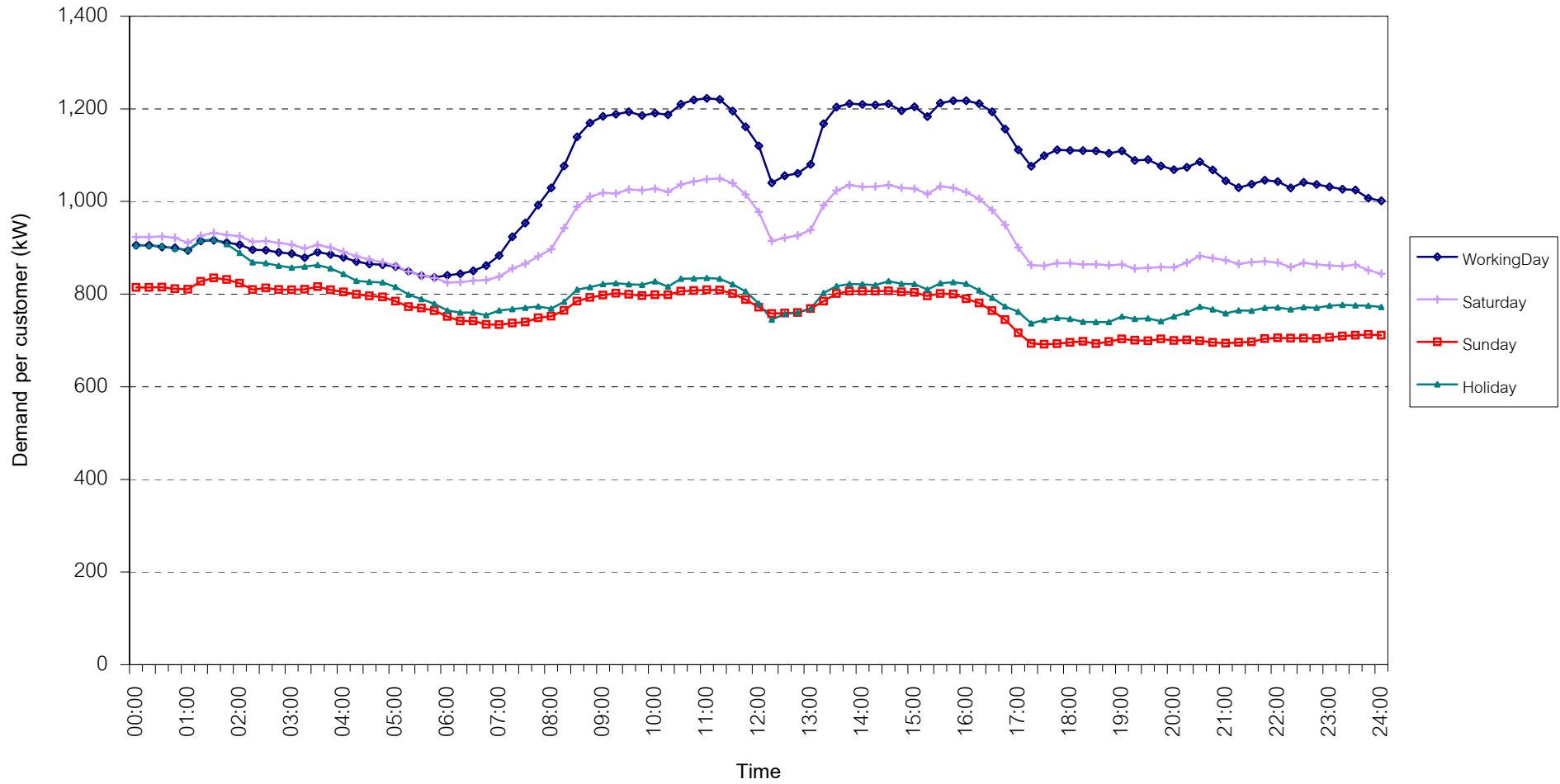
กราฟรูปที่ 12



TSIC 38 (Fabricated Metal Products) Load Profile

Date: 1 Jul, 2008 to 31 Jul, 2008

Number of sample customers = 61



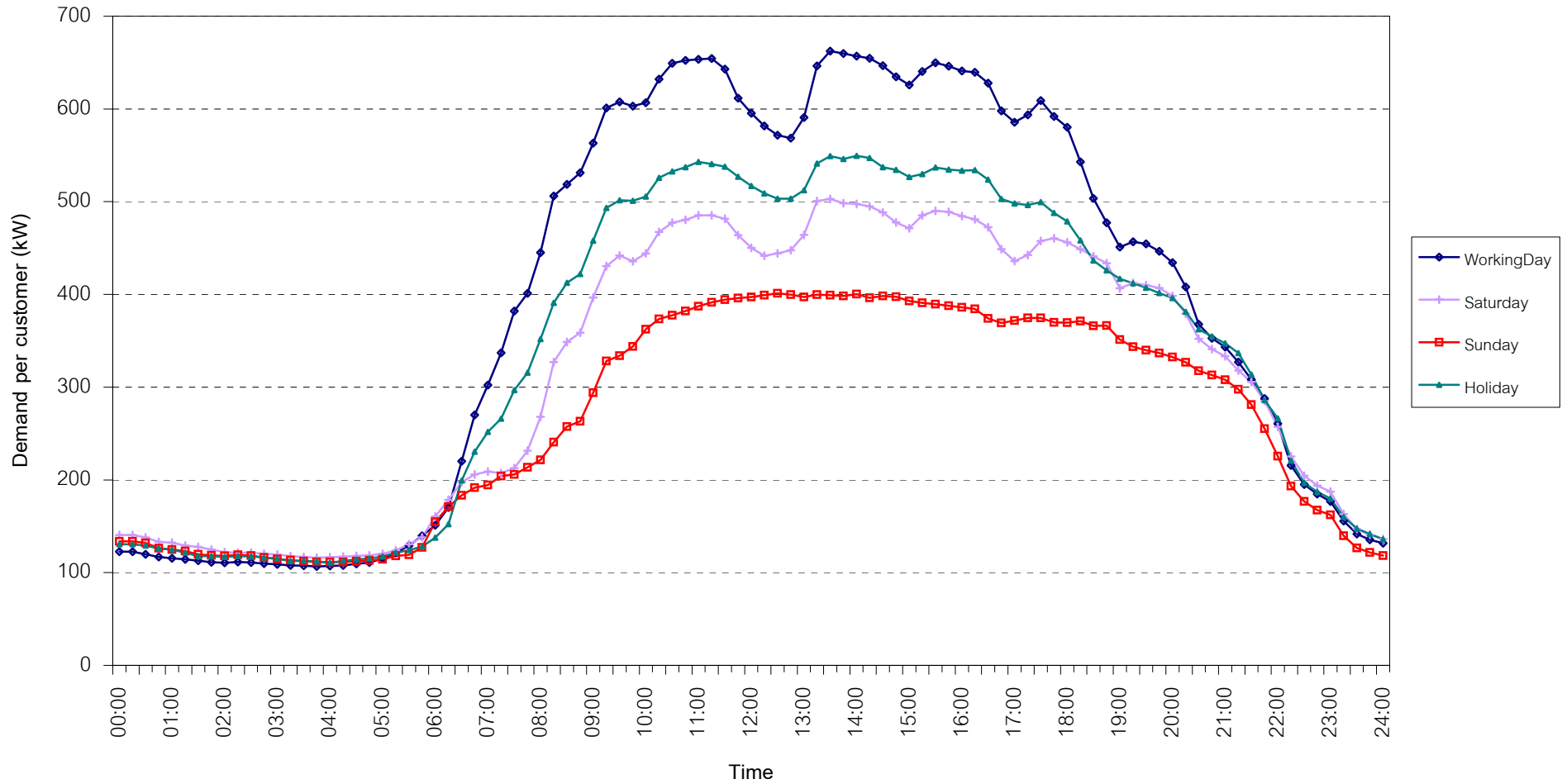
กราฟรูปที่ 13



TSIC 61 (Wholesale Trade) Load Profile

Date: 1 Jul, 2008 to 31 Jul, 2008

Number of sample customers = 8



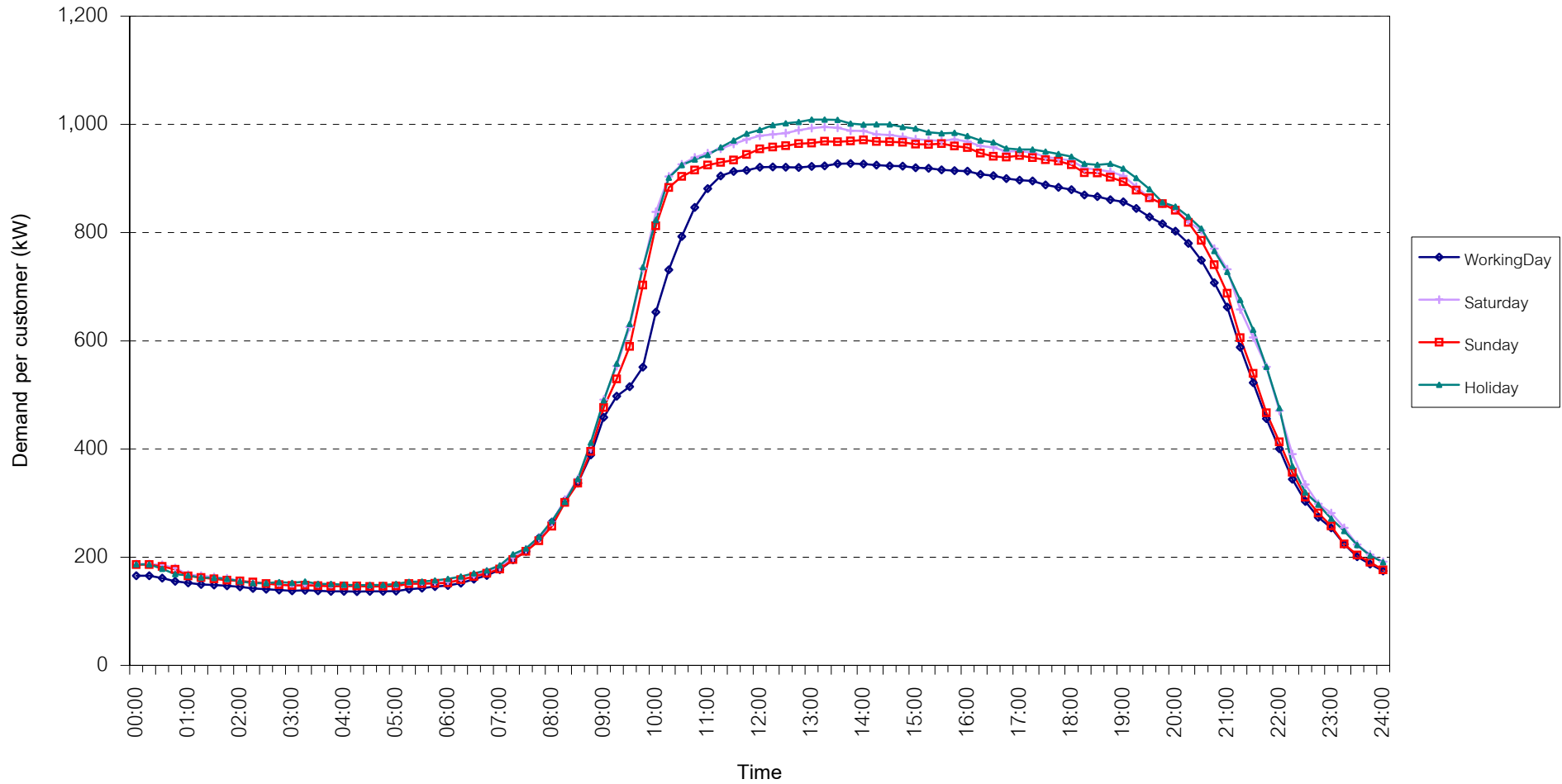
กราฟรูปที่ 14



TSIC 62 (Retail Trade) Load Profile

Date: 1 Jul, 2008 to 31 Jul, 2008

Number of sample customers = 73



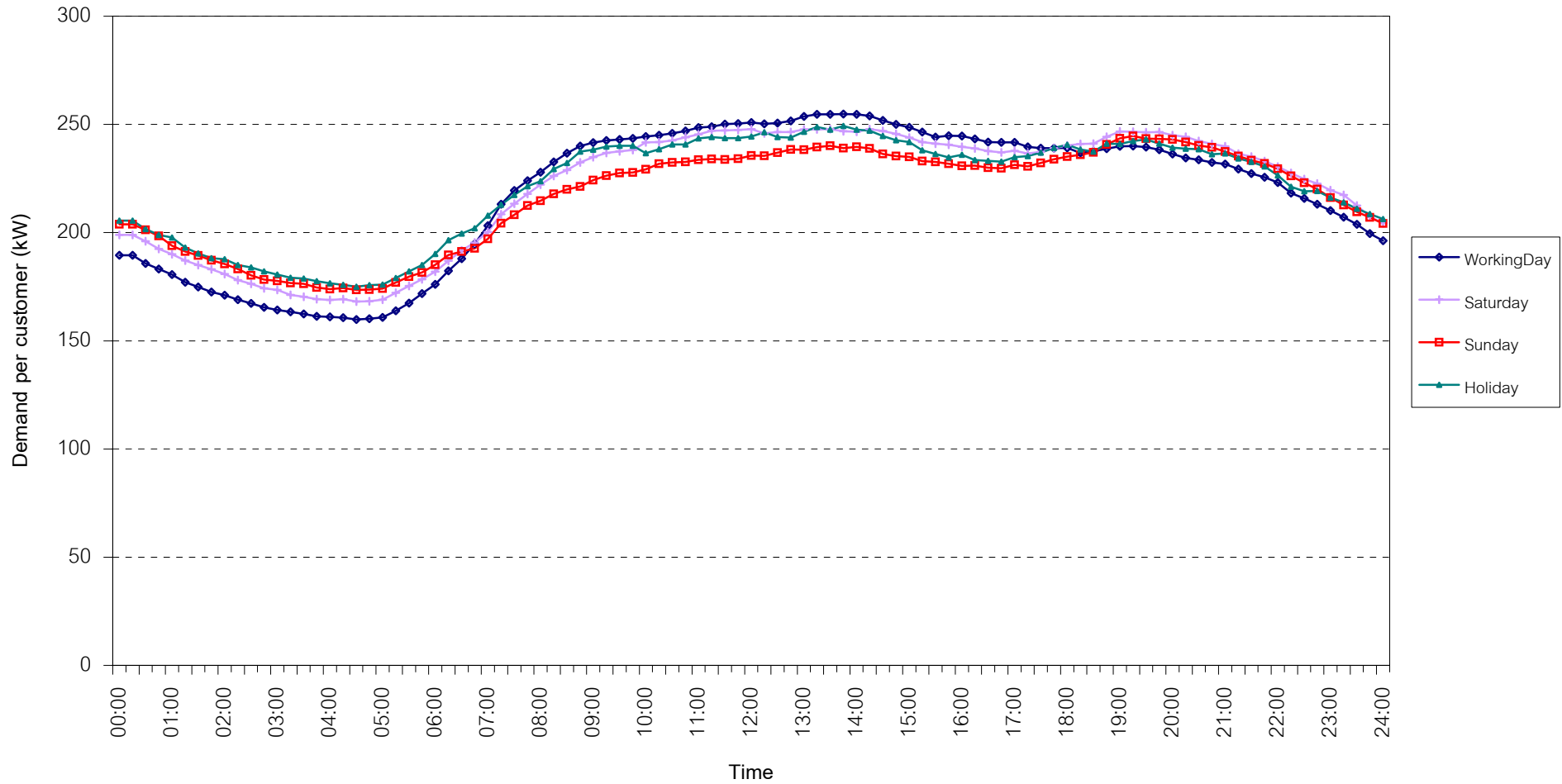
กราฟรูปที่ 15



TSIC 63 (Hotels and restaurants) Load Profile

Date: 1 Jul, 2008 to 31 Jul, 2008

Number of sample customers = 82



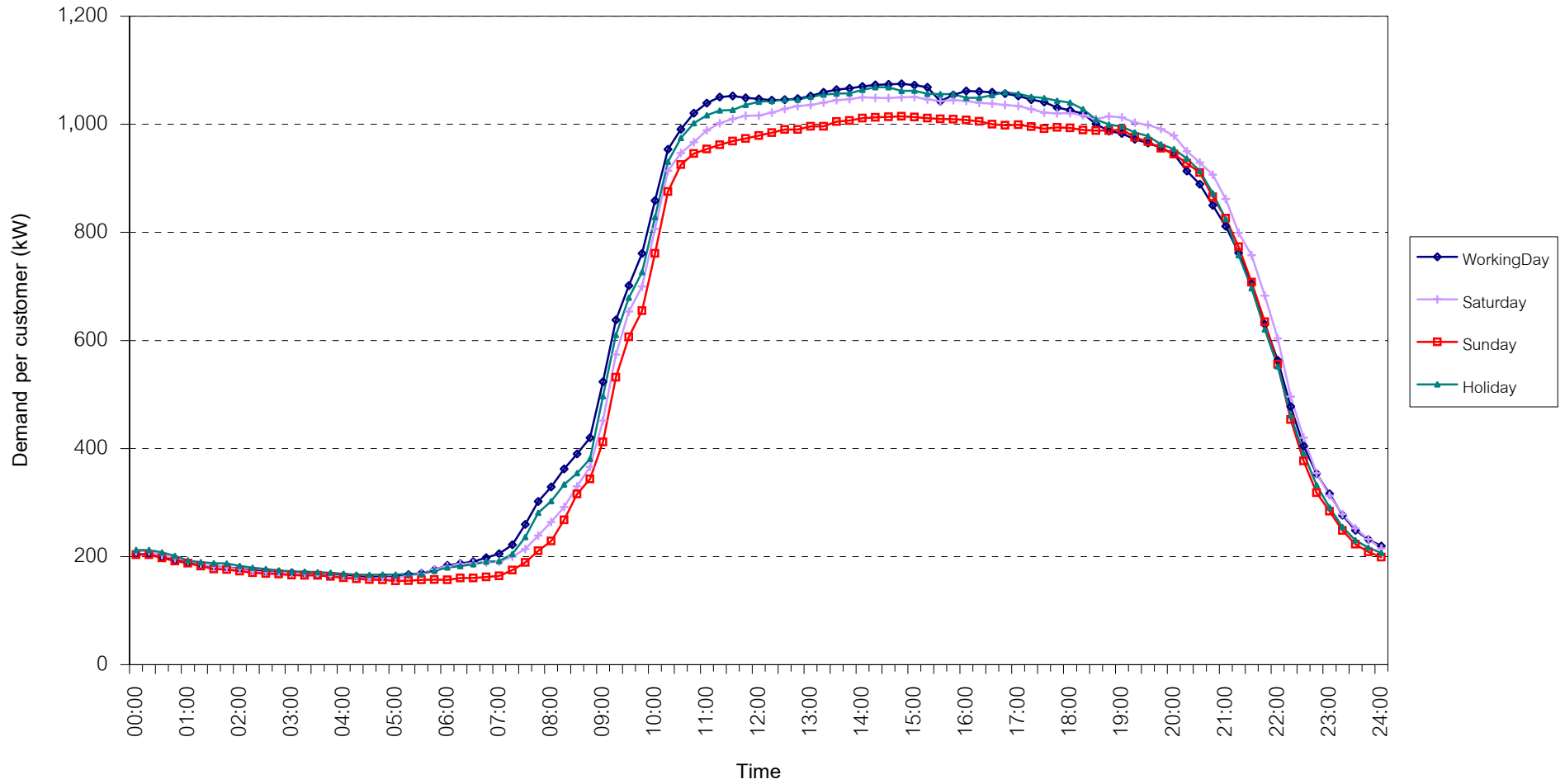
กราฟรูปที่ 16



TSIC 83 (Real Estate) Load Profile

Date: 1 Jul, 2008 to 31 Jul, 2008

Number of sample customers = 33



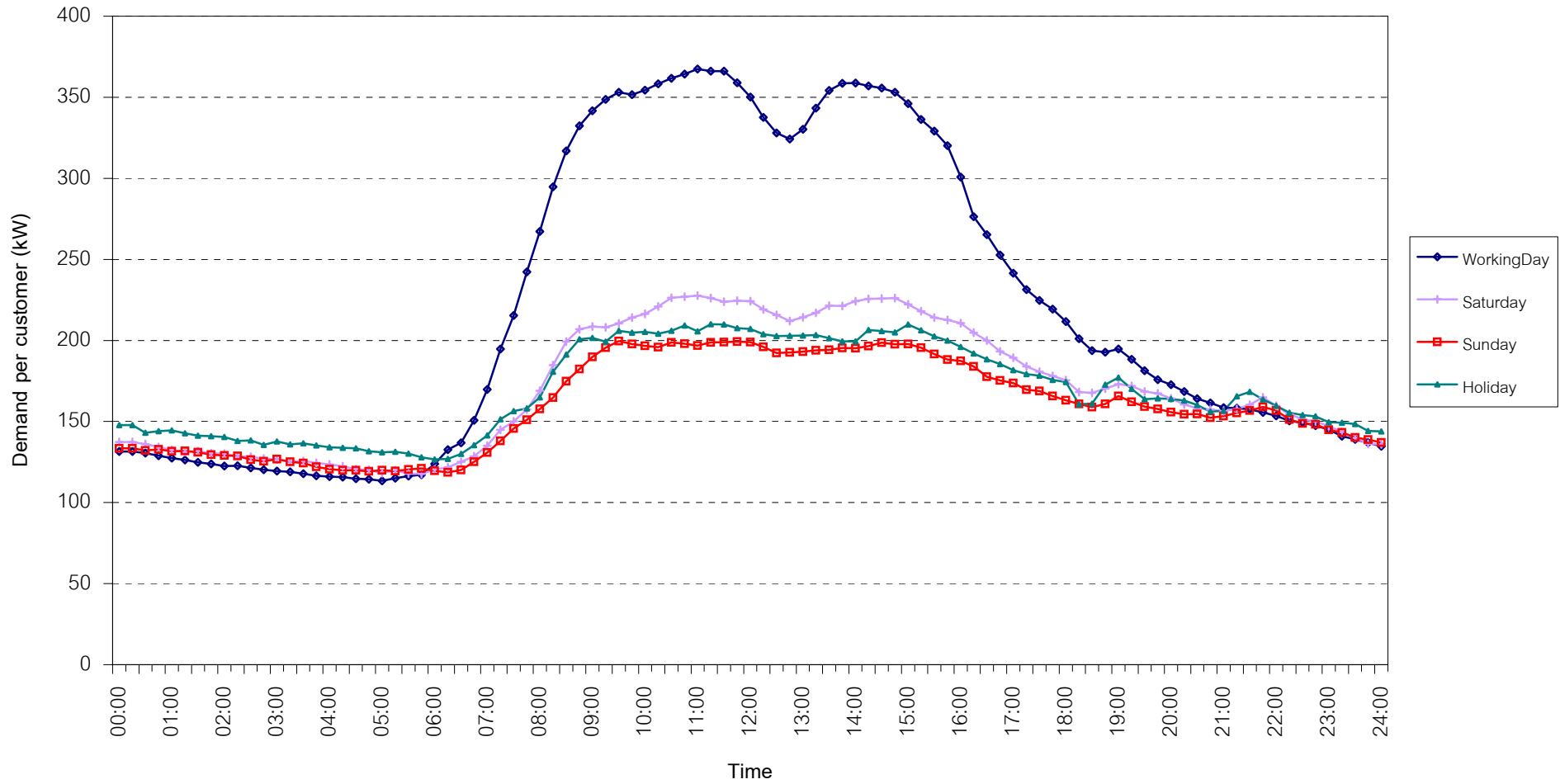
กราฟรูปที่ 17



TSIC 93 (Social Services) Load Profile

Date: 1 Jul, 2008 to 31 Jul, 2008

Number of sample customers = 21

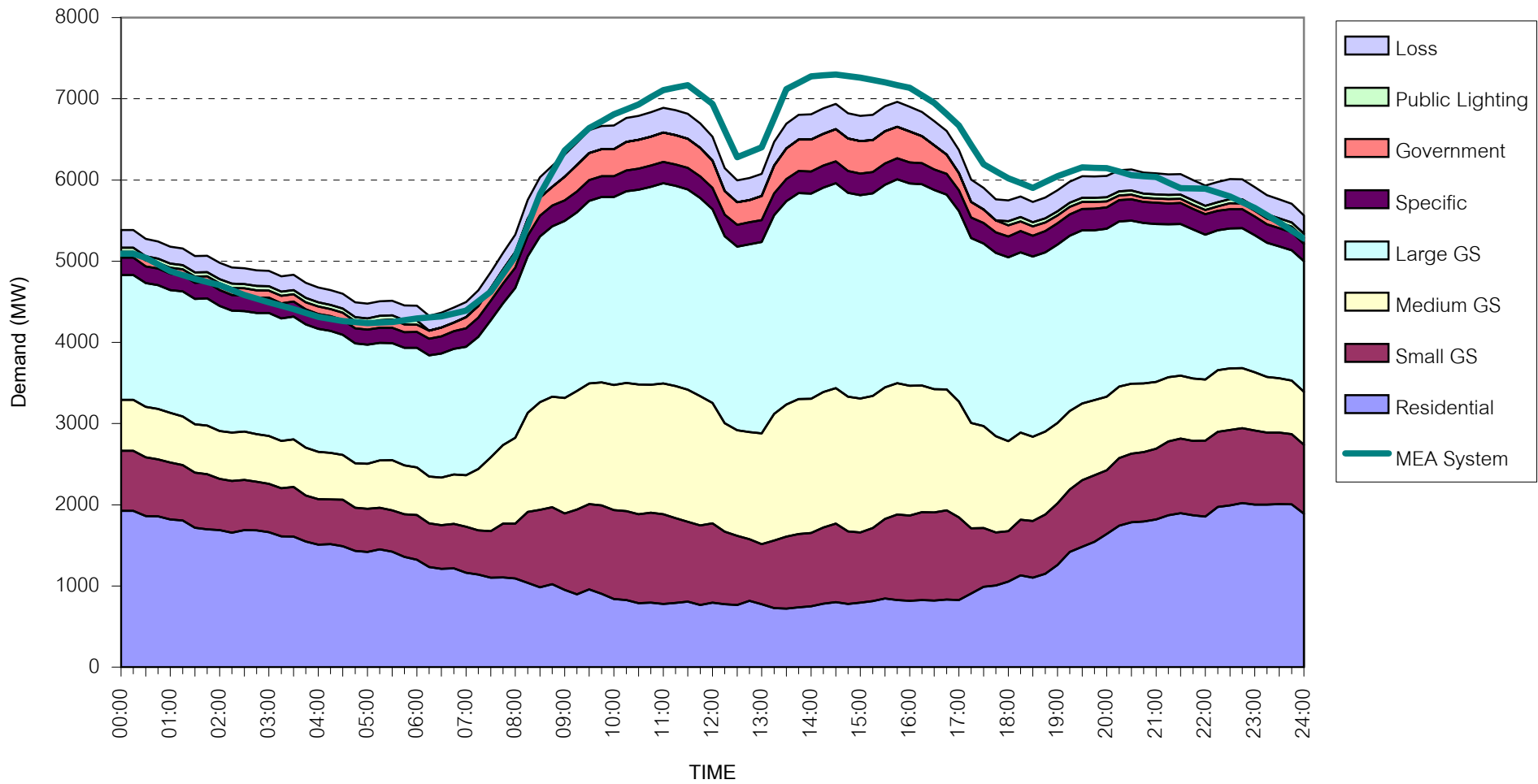


กราฟรูปที่ 18



MEA's System Load Profile

Peak Day 15 July, 2008 at 14:30



กราฟรูปที่ 19