



# ข้อมูลการศึกษาลักษณะการใช้ไฟฟ้า

## เดือน กุมภาพันธ์ 2551



Table 1-1

COINCIDENT WITH LOAD RESEARCH SYSTEM'S PEAK ON February 12,2008 time 13:45 6,577.00 MW  
( MEA SYSTEM'S PEAK ON February 12,2008 time 14:30 6,759.84 MW )

CLASS	Number of Customers	Kilowatt hours	Coincident Peak (MEA System Peak at time14:30)		Coincident Peak (Load Research System Peak at time 13:45)		Sector Diversified Demand		
			MW	Contribution (%)	MW	Contribution (%)	Max MW.	Date	Time
Residential	2,194,119	715,968,118	691.70	10.63	733.92	11.16	1,961.67	12 Feb 08	23:15
Small General Service	474,124	493,137,095	1,117.37	17.18	1,143.95	17.39	1,318.78	25 Feb 08	11:45
Medium General Service	19,892	629,544,755	1,559.81	23.98	1,560.19	23.72	1,683.04	12 Feb 08	14:00
Large General Service	1,608	1,229,915,649	2,419.05	37.19	2,422.68	36.84	2,515.66	12 Feb 08	14:45
Specific Business	2,267	139,743,726	239.70	3.69	243.50	3.70	253.66	9 Feb 08	19:15
Government and non Profit organization	10,831	94,582,662	380.48	5.85	377.67	5.74	484.05	12 Feb 08	14:15
Public Lighting	-	18,289,164	0.00	0.00	0.00	0.00	49.94	-	-
Loss	-	50,454,429	96.12	1.48	95.10	1.45	96.12	12 Feb 08	14:30
TOTAL	2,702,841	3,371,635,598	6,504.22	100	6,577.00	100	6,577.00	12 Feb 08	13:45



Table 1-2

Number of sample customers on February, 2008

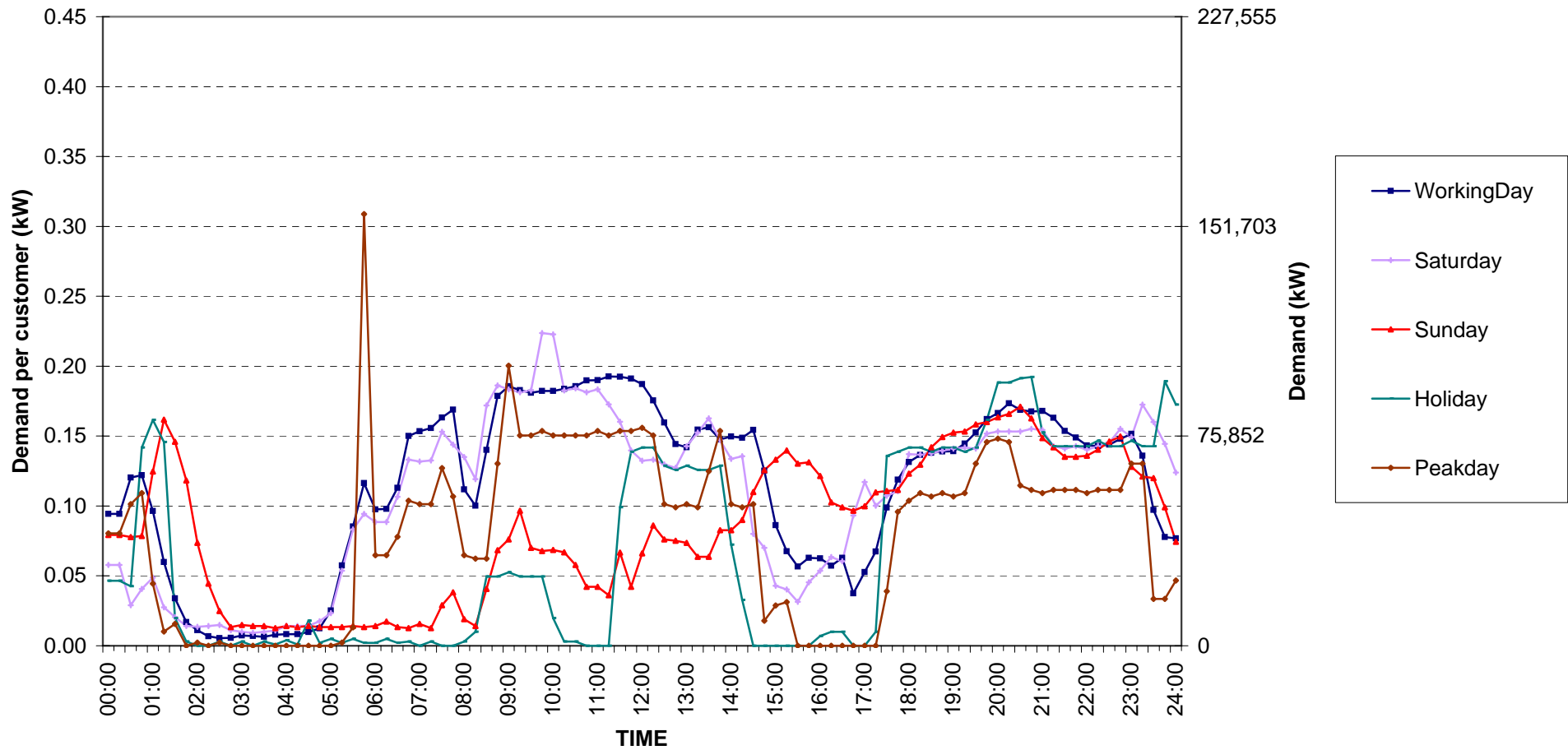
CLASS	Number of sample customers (Target)	Number of sample customers (Collected)
Residential	191	191
Small General Service	297	297
Medium General Service	163	163
Large General Service	328	328
Specific Business	76	76
Government and Non-profit Organization	68	68
TOTAL	1,123	1,123



## Residential ( Energy Consumption less than 150 kWh per month )

Date: 1 Feb, 2008 to 29 Feb, 2008

Number of sample customers = 10



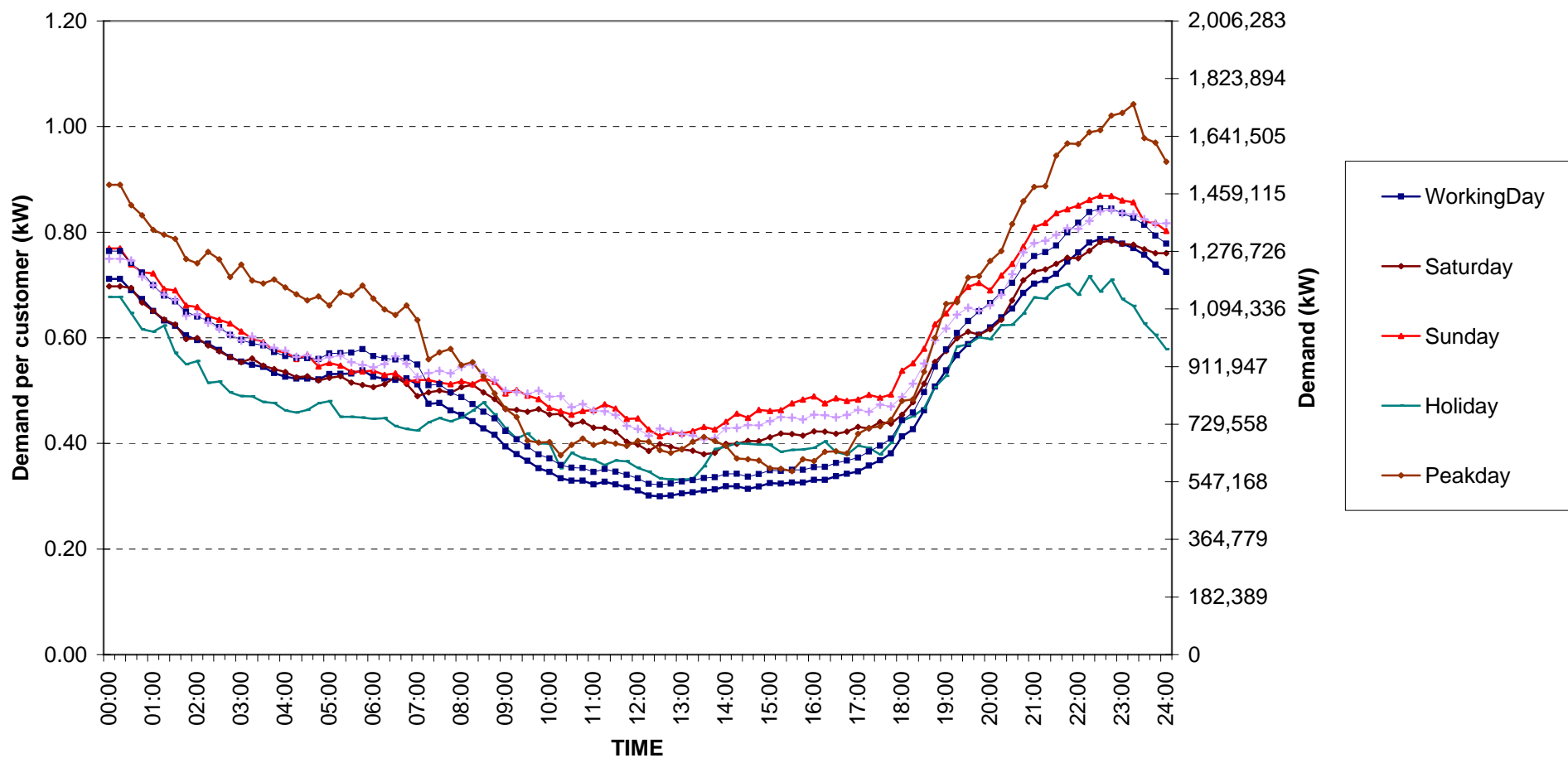
กราฟรูปที่ 1



## Residential ( Energy Consumption more than 150 kWh per month )

Date: 1 Feb, 2008 to 29 Feb, 2008

Number of sample customers = 181



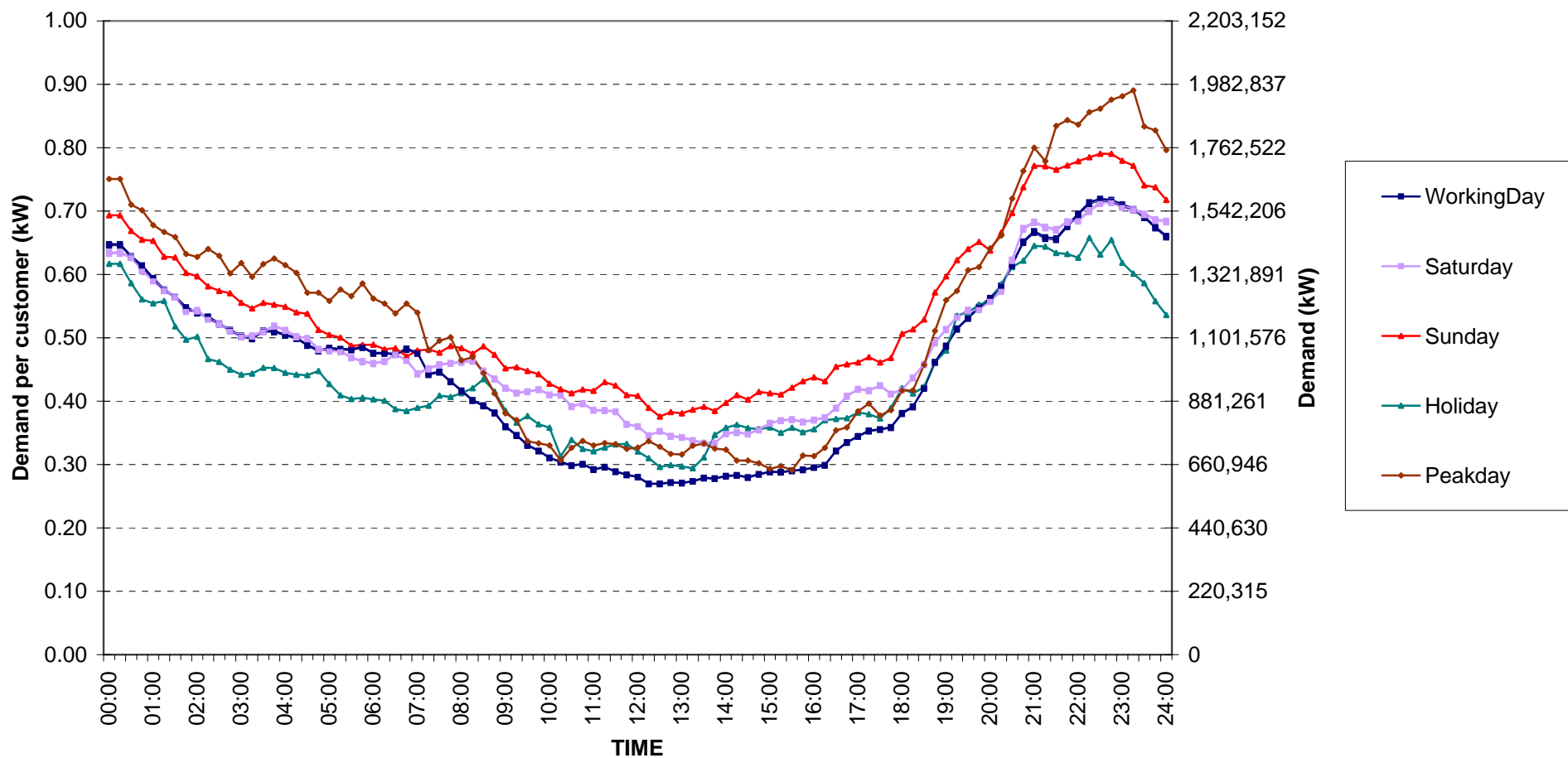
กราฟรูปที่ 2



## Residential Load Profile

Date: 1 Feb, 2008 to 29 Feb, 2008

Number of sample customers = 191



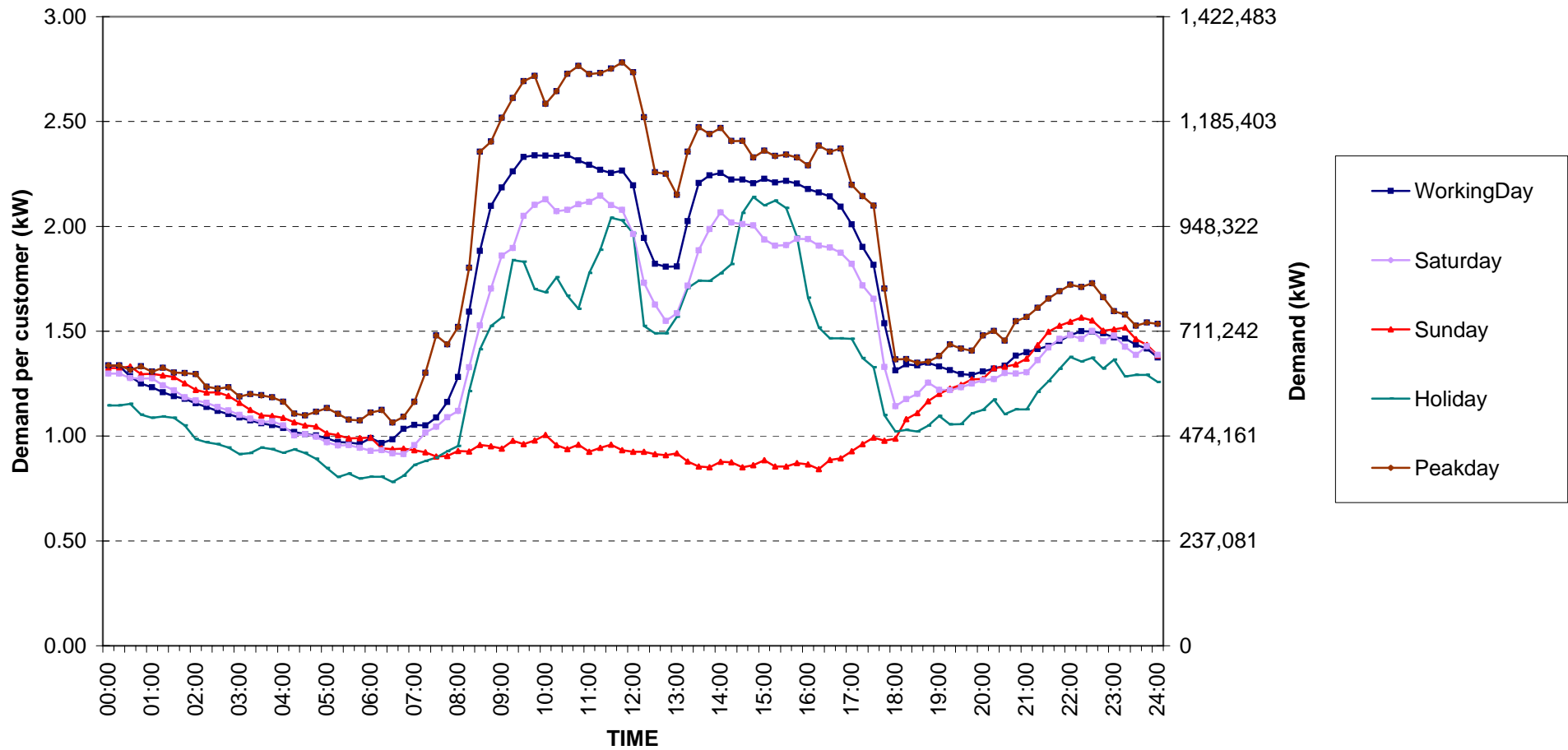
กราฟรูปที่ 3



Small General Services Load Profile

Date: 1 Feb, 2008 to 29 Feb, 2008

Number of sample customers = 297



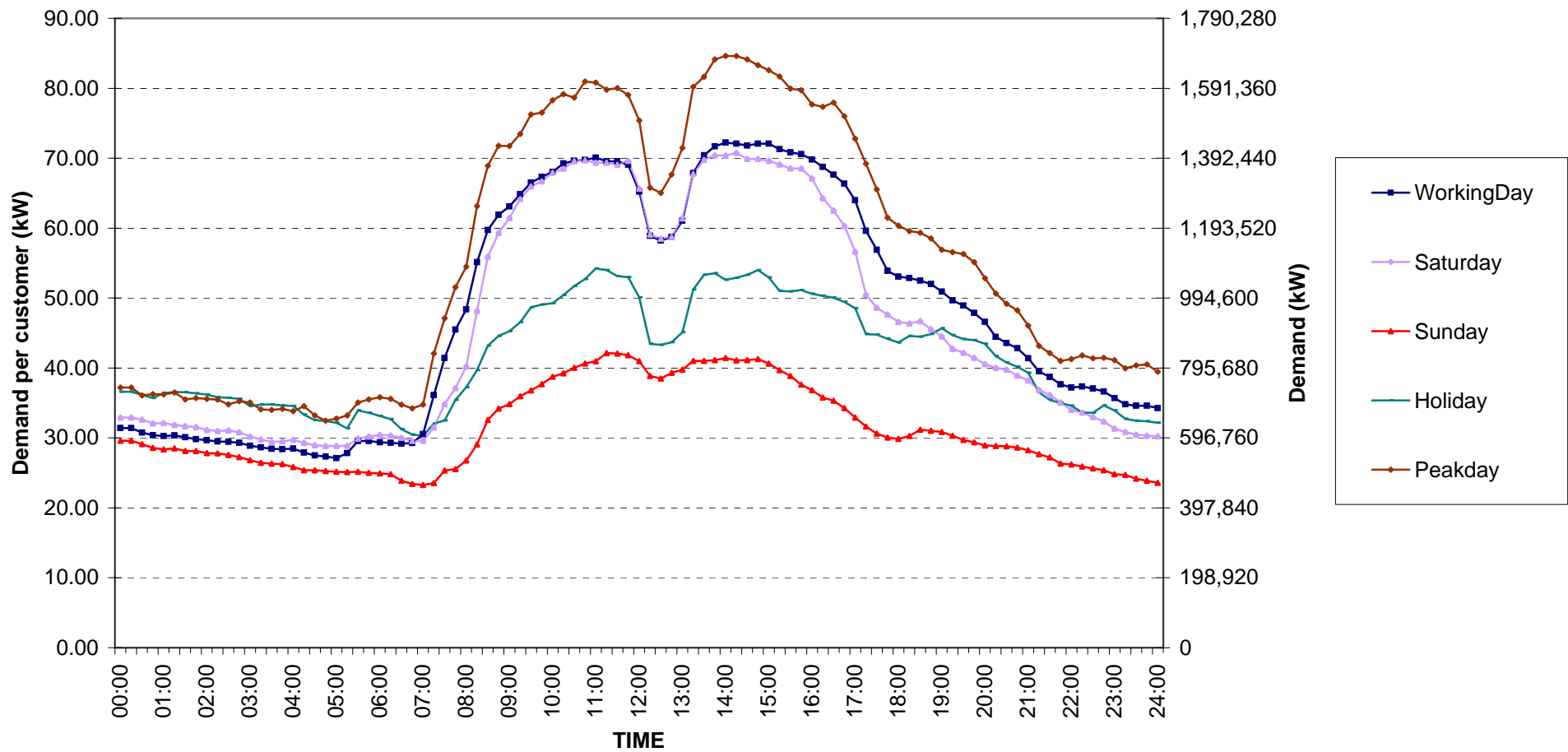
กราฟรูปที่ 4



Medium General Services Load Profile

Date: 1 Feb, 2008 to 29 Feb, 2008

Number of sample customers = 163



กราฟรูปที่ 5

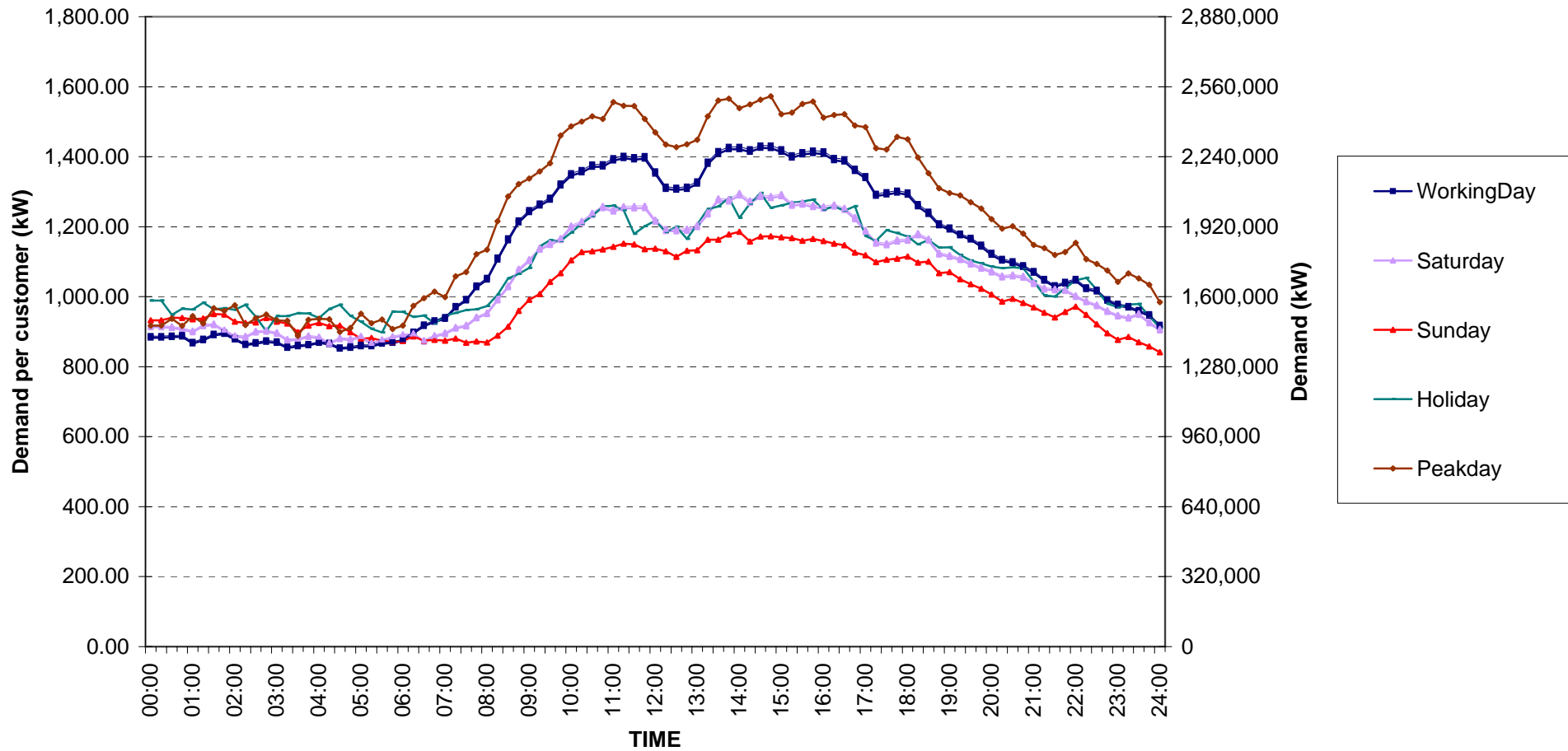




## Large General Services Load Profile

Date: 1 Feb, 2008 to 29 Feb, 2008

Number of sample customers = 328



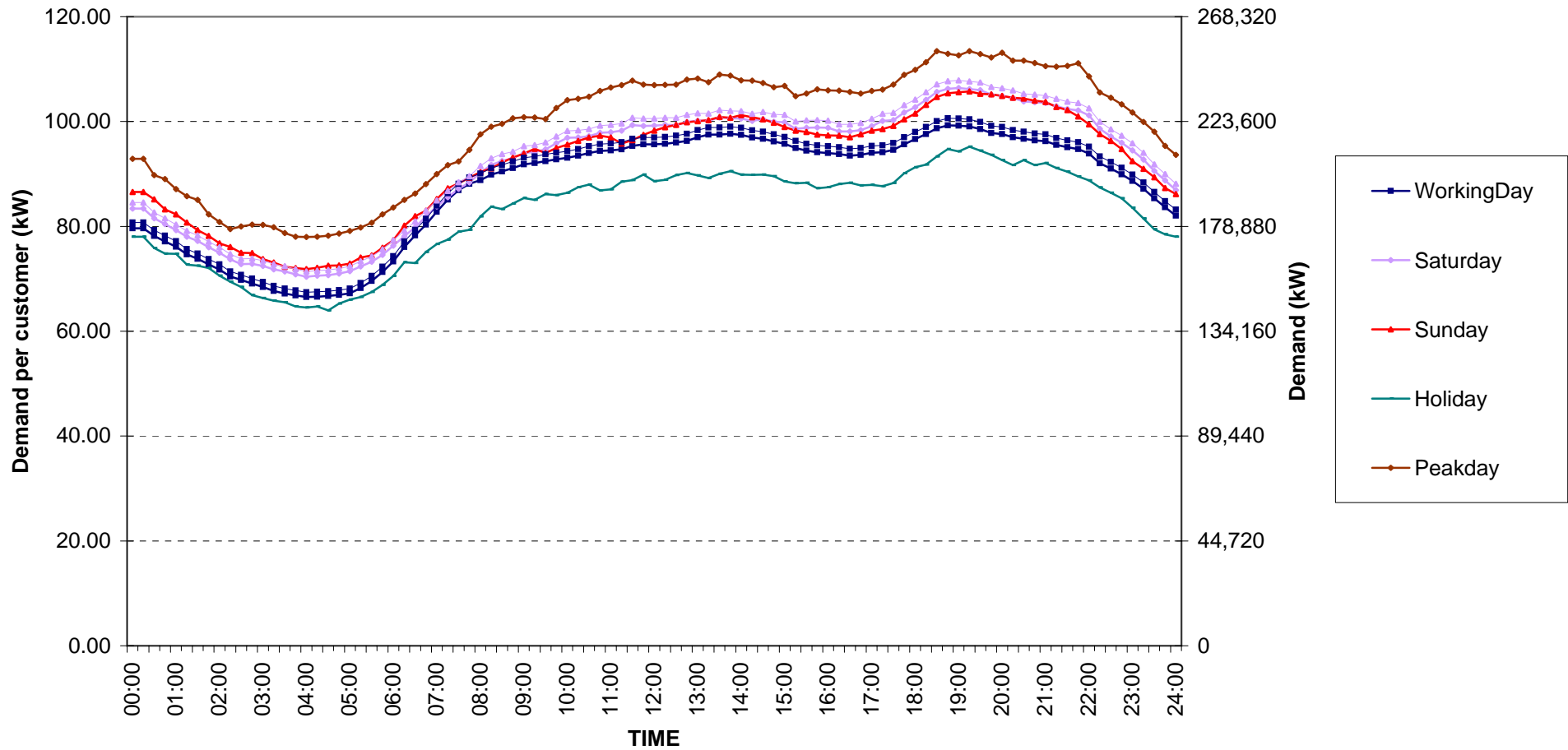
กราฟรูปที่ 6



## Specific Business Load Profile

Date: 1 Feb, 2008 to 29 Feb, 2008

Number of sample customers = 76



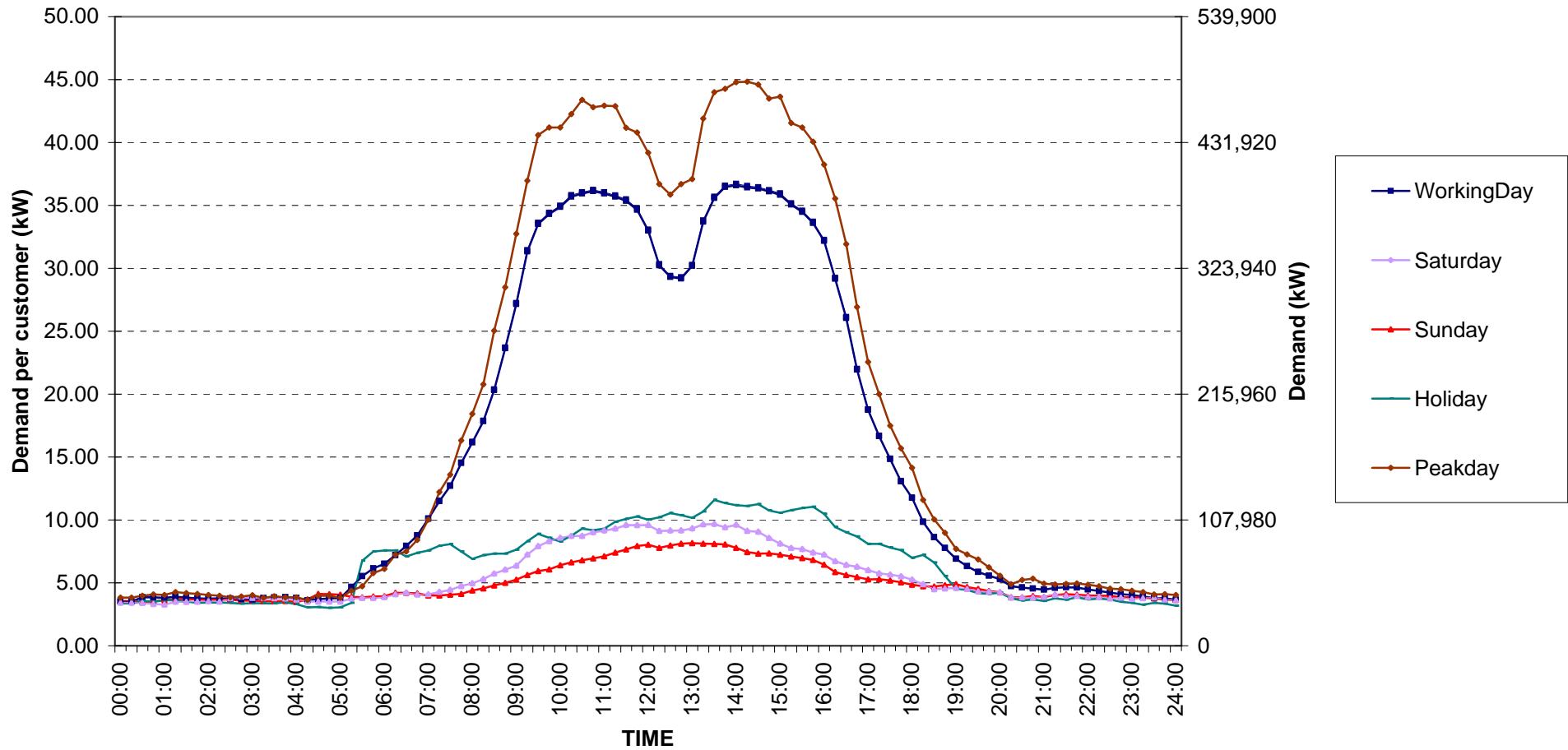
กราฟรูปที่ 7



## Government institutions and non-profit organizations Load Profile

Date: 1 Feb, 2008 to 29 Feb, 2008

Number of sample customers = 68



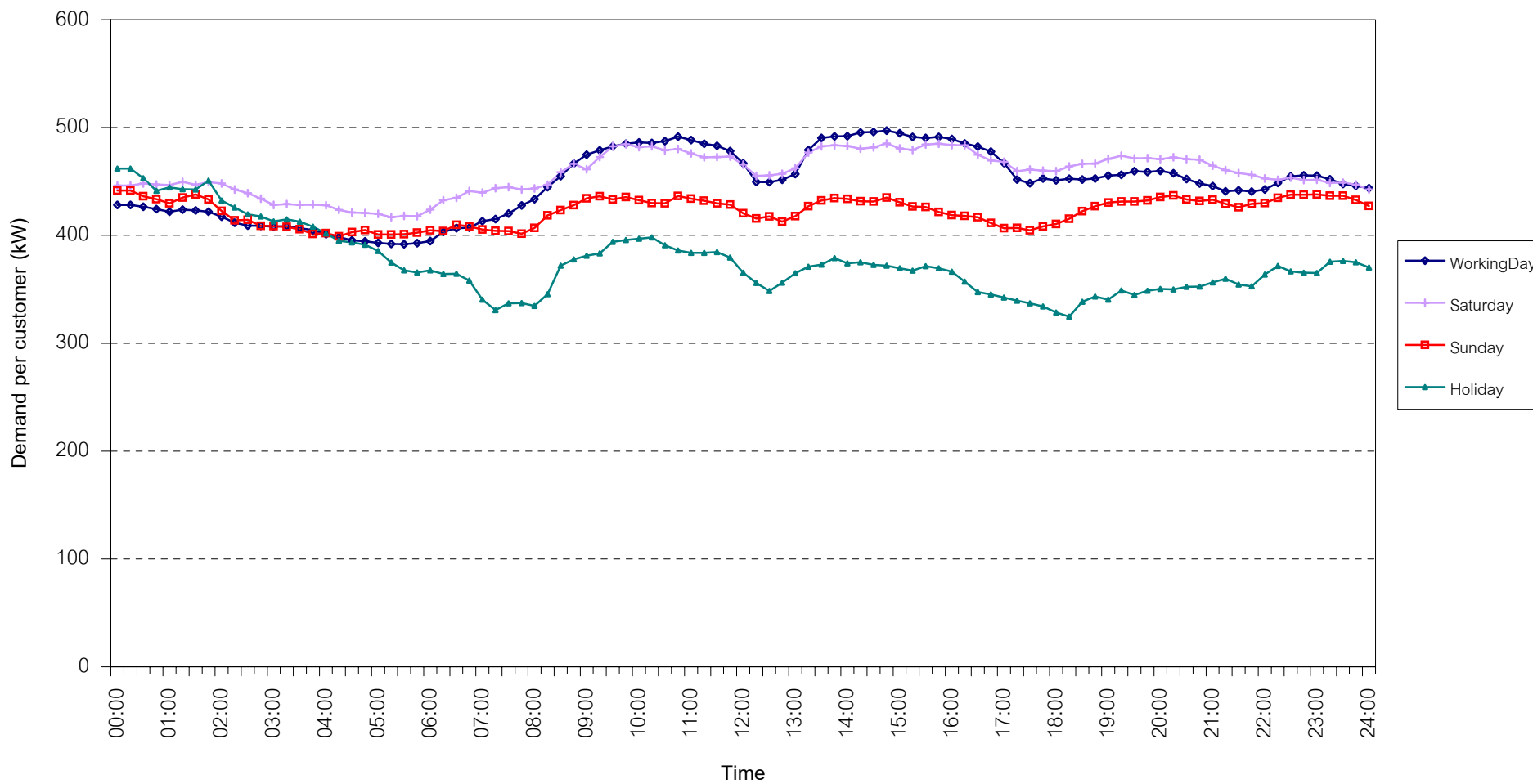
กราฟรูปที่ 8



## TSIC 31 (Food Processing) Load Profile

Date: 1 Feb, 2008 to 29 Feb, 2008

Number of sample customers = 30



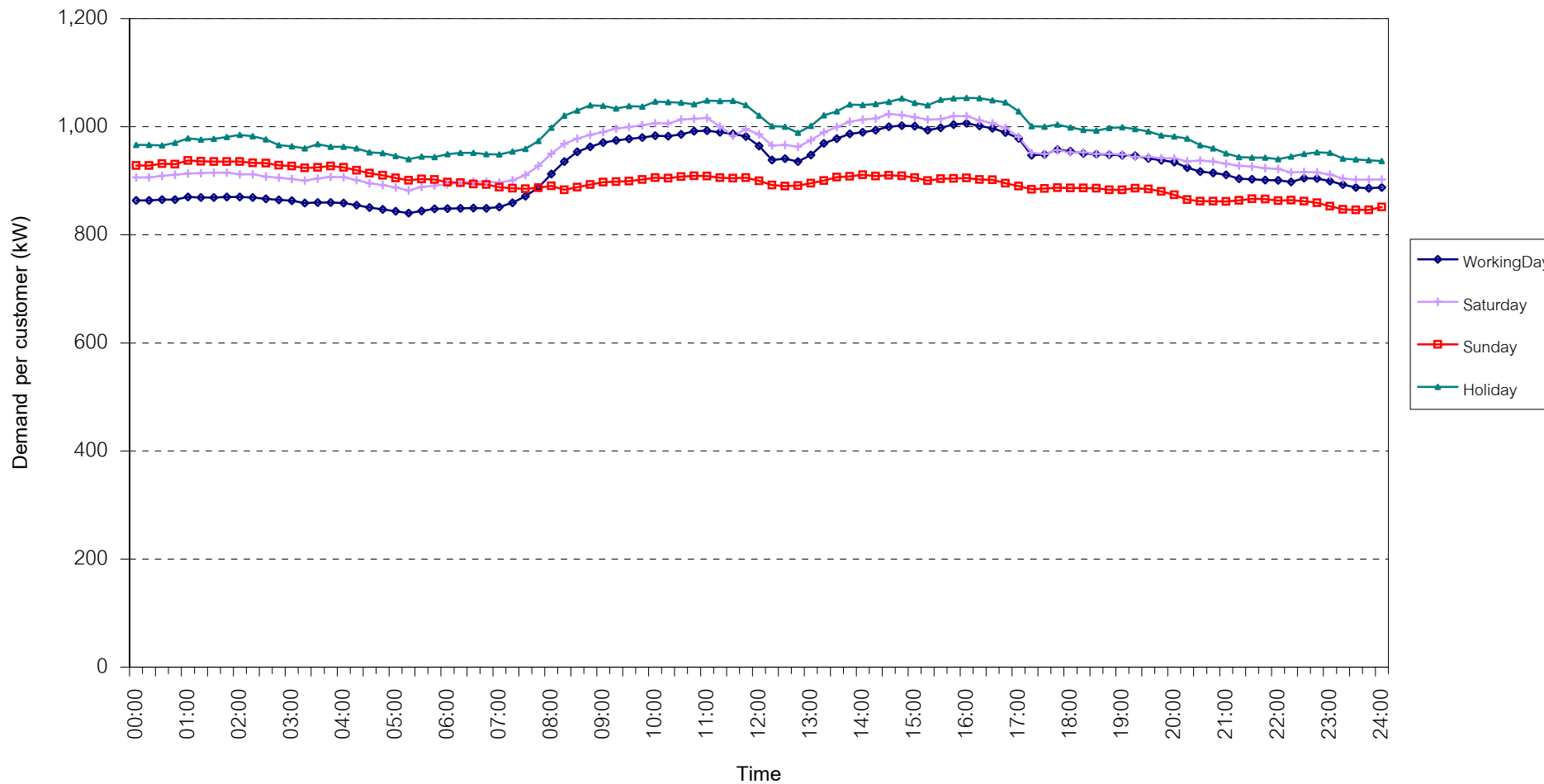
กราฟรูปที่ 9



## TSIC 32 (Textiles) Load Profile

Date: 1 Feb, 2008 to 29 Feb, 2008

Number of sample customers = 63



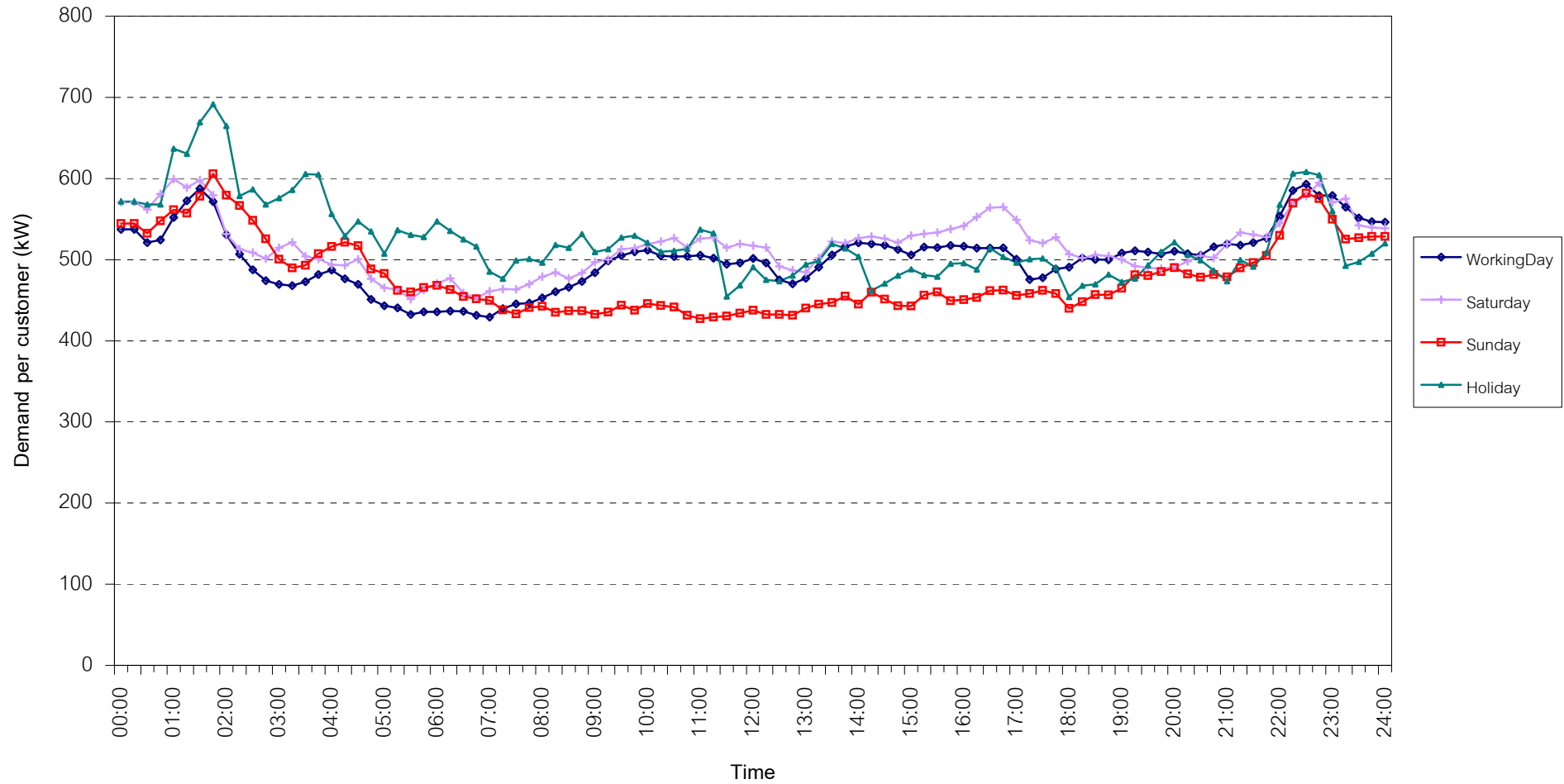
กราฟรูปที่ 10



## TSIC 34 (Paper & Printing) Load Profile

Date: 1 Feb, 2008 to 29 Feb, 2008

Number of sample customers = 10



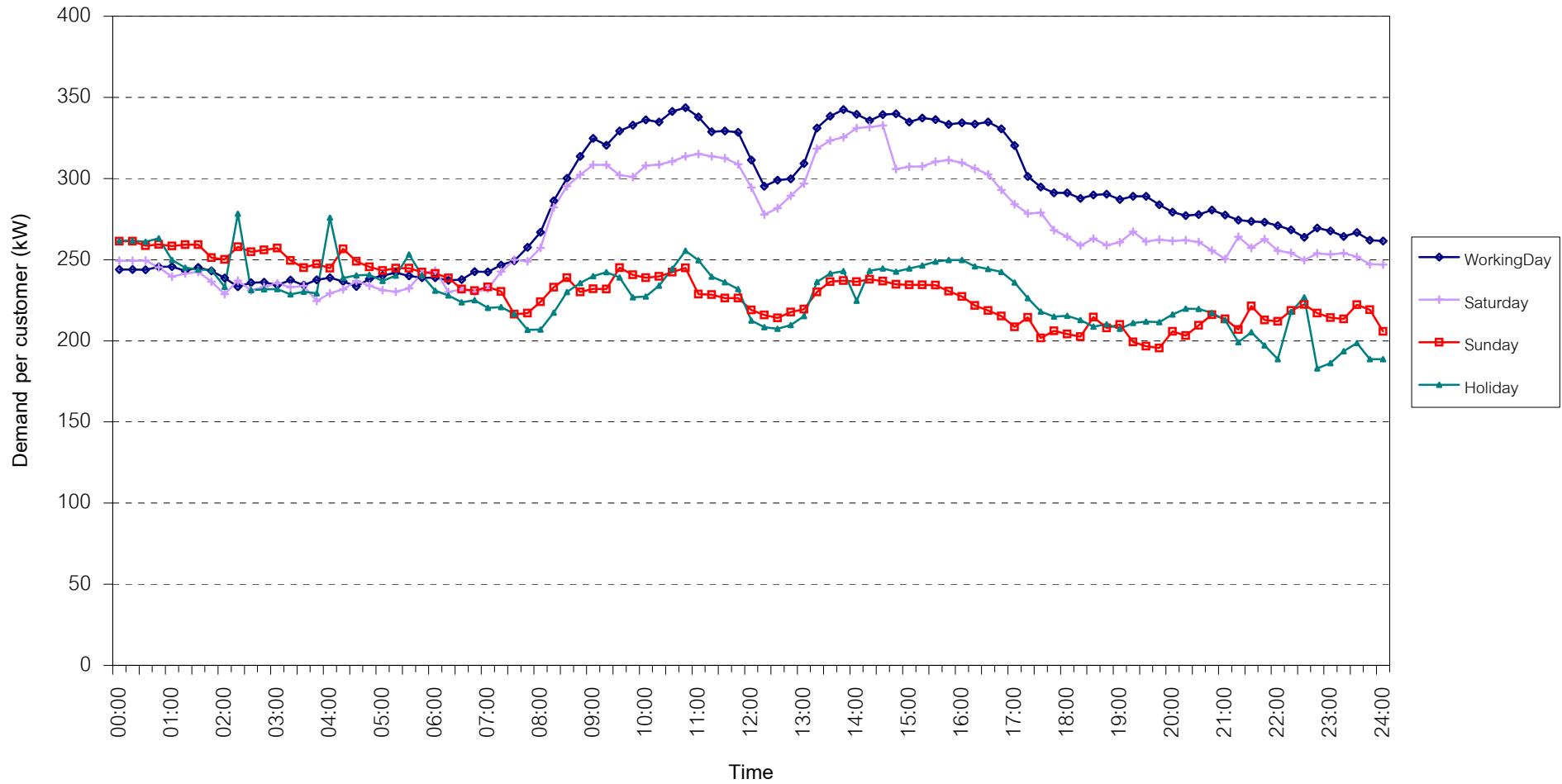
กราฟรูปที่ 11



## TSIC 35 (Chemical & Petroleum) Load Profile

Date: 1 Feb, 2008 to 29 Feb, 2008

Number of sample customers = 62



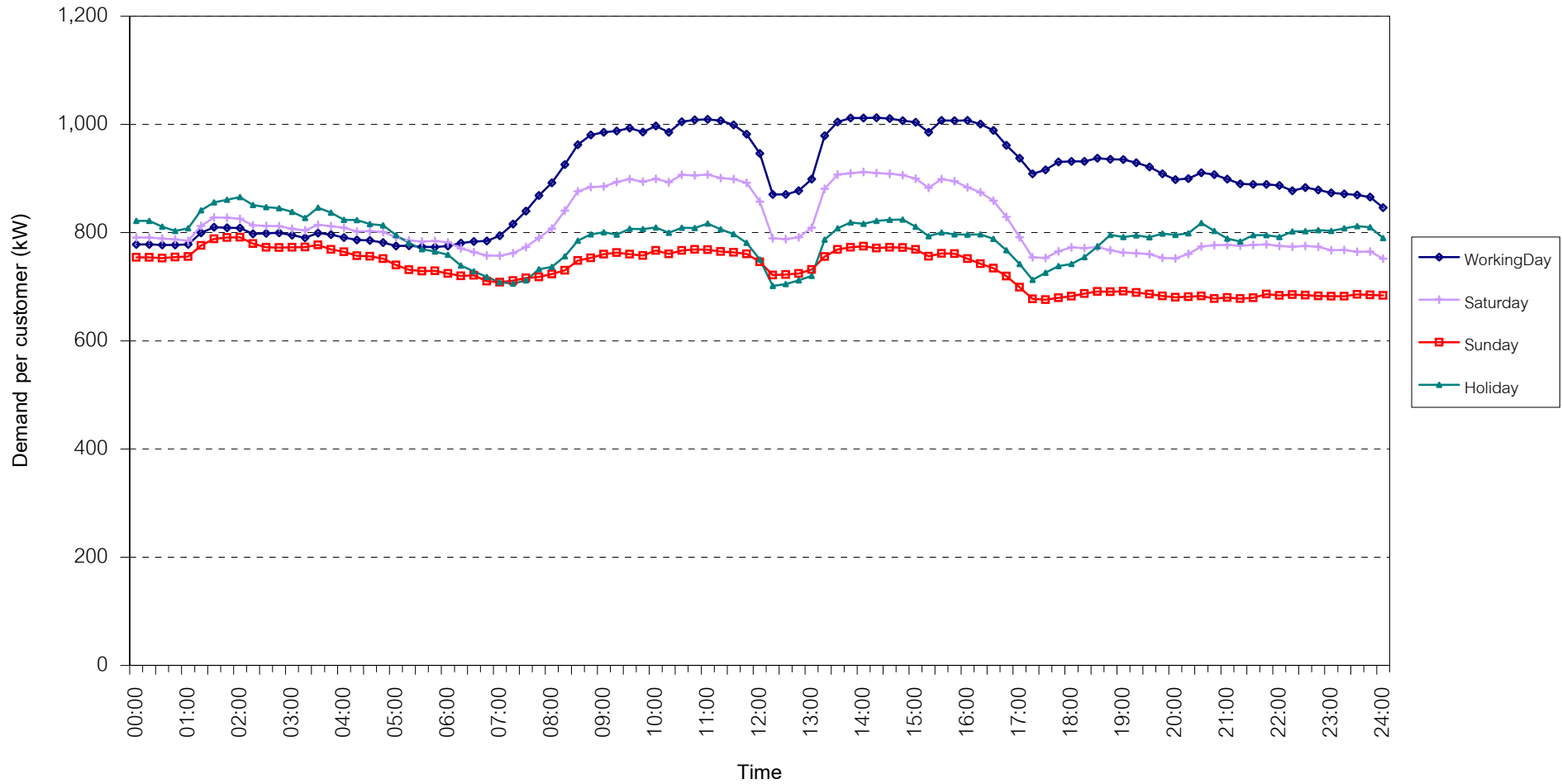
กราฟรูปที่ 12



## TSIC 38 (Fabricated Metal Products) Load Profile

Date: 1 Feb, 2008 to 29 Feb, 2008

Number of sample customers = 61



กราฟรูปที่ 13

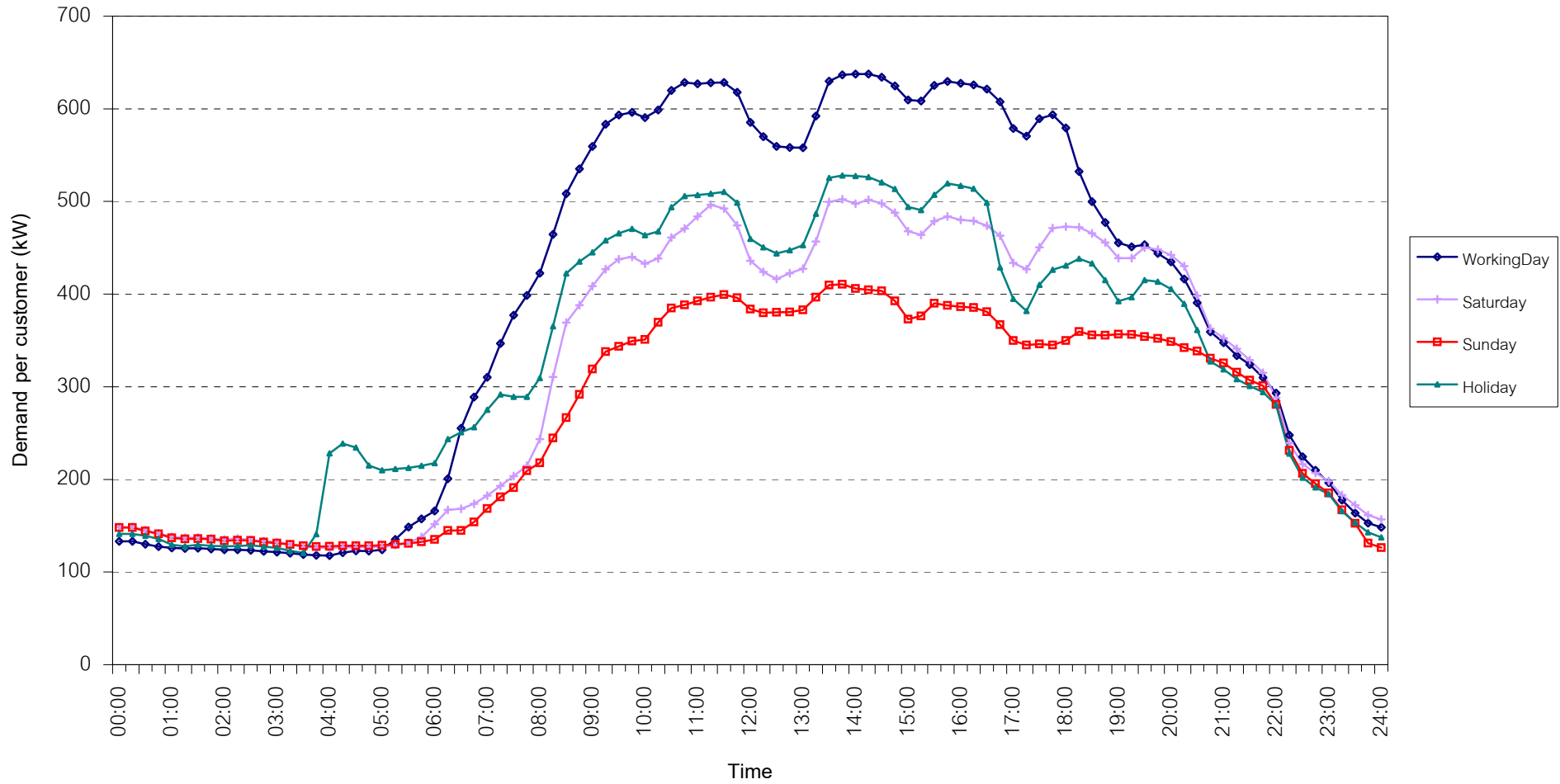




## TSIC 61 (Wholesale Trade) Load Profile

Date: 1 Feb, 2008 to 29 Feb, 2008

Number of sample customers = 8



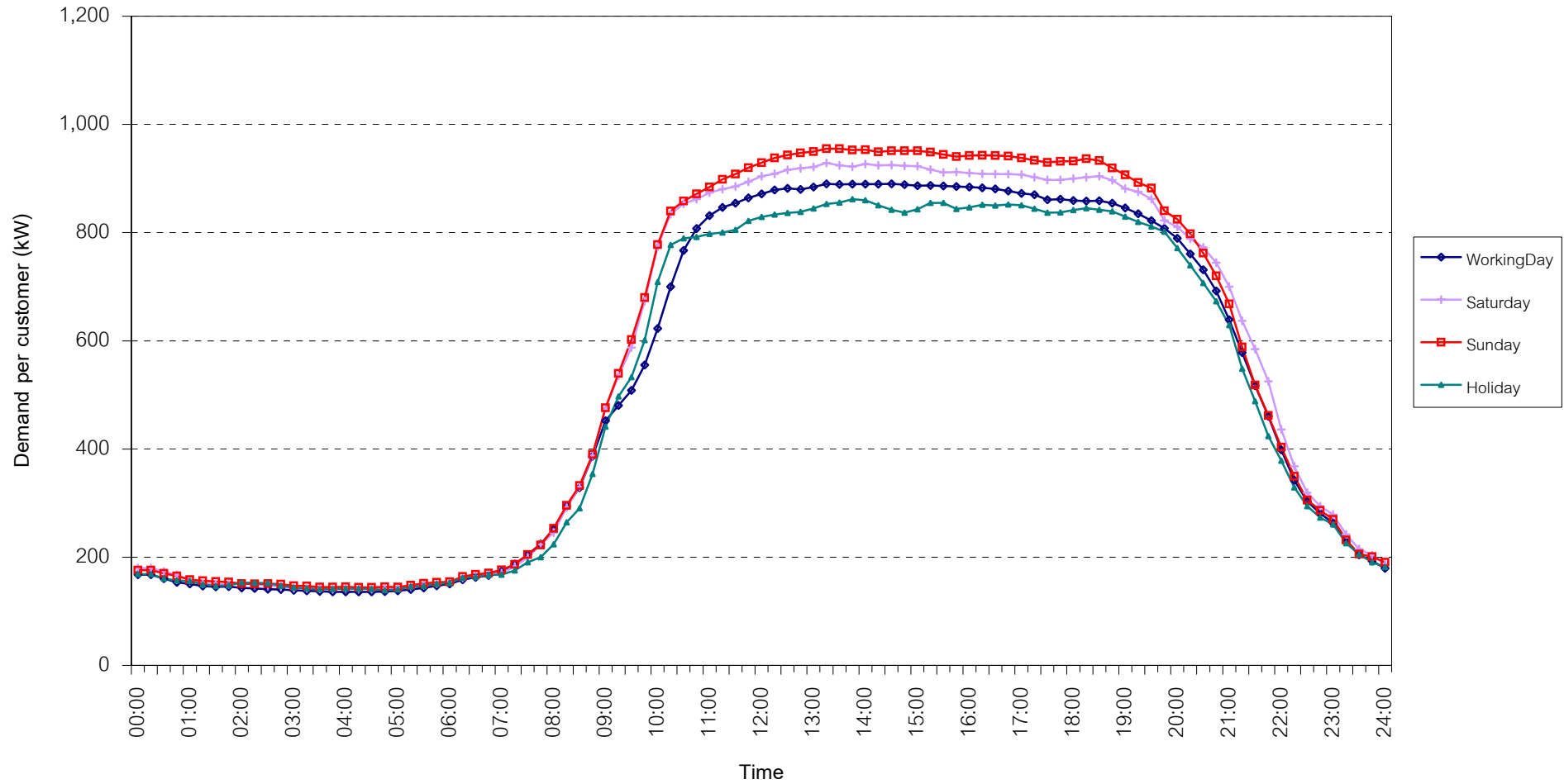
กราฟรูปที่ 14



## TSIC 62 (Retail Trade) Load Profile

Date: 1 Feb, 2008 to 29 Feb, 2008

Number of sample customers = 73



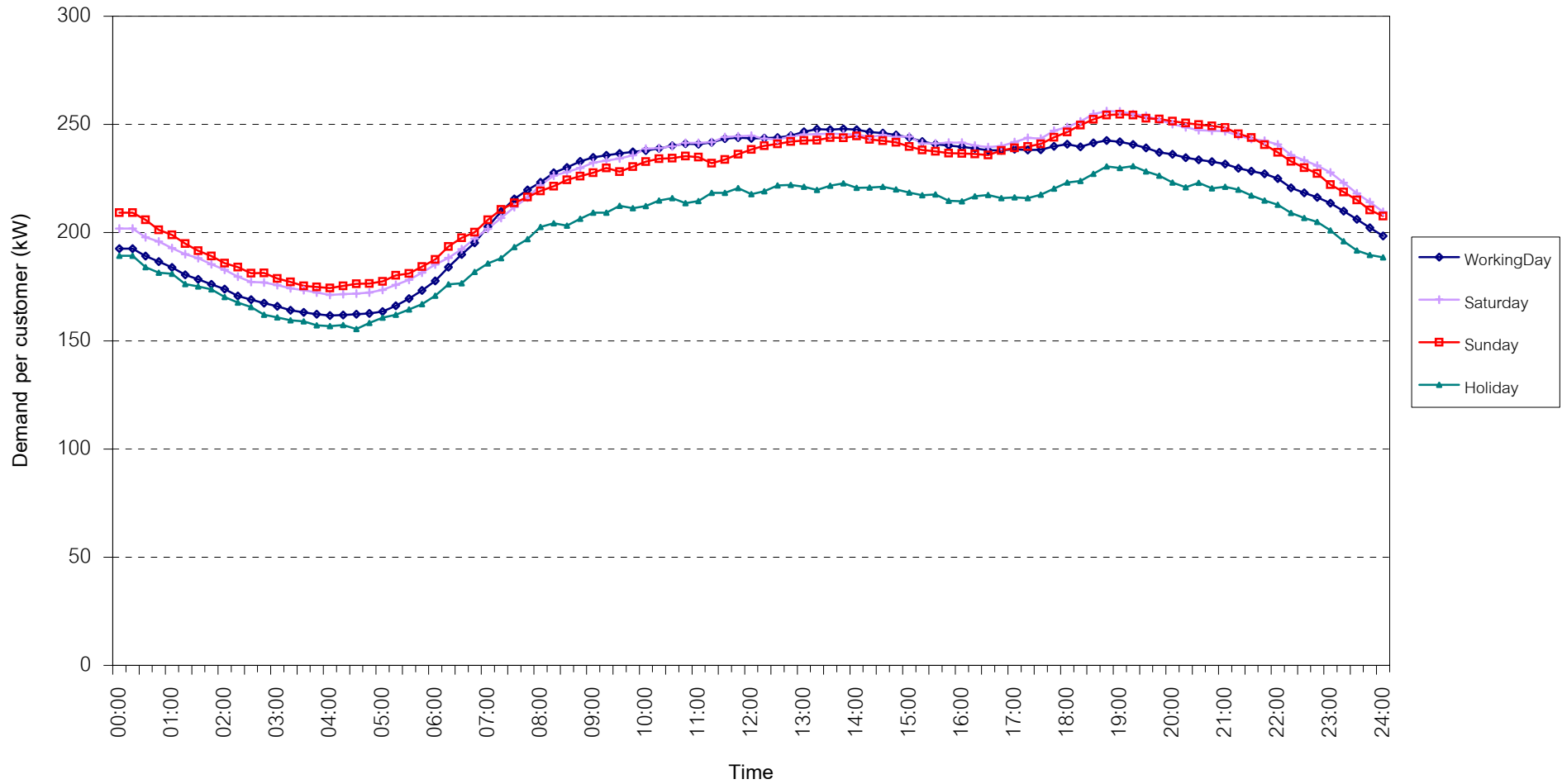
กราฟรูปที่ 15



## TSIC 63 (Hotels and restaurants) Load Profile

Date: 1 Feb, 2008 to 29 Feb, 2008

Number of sample customers = 82



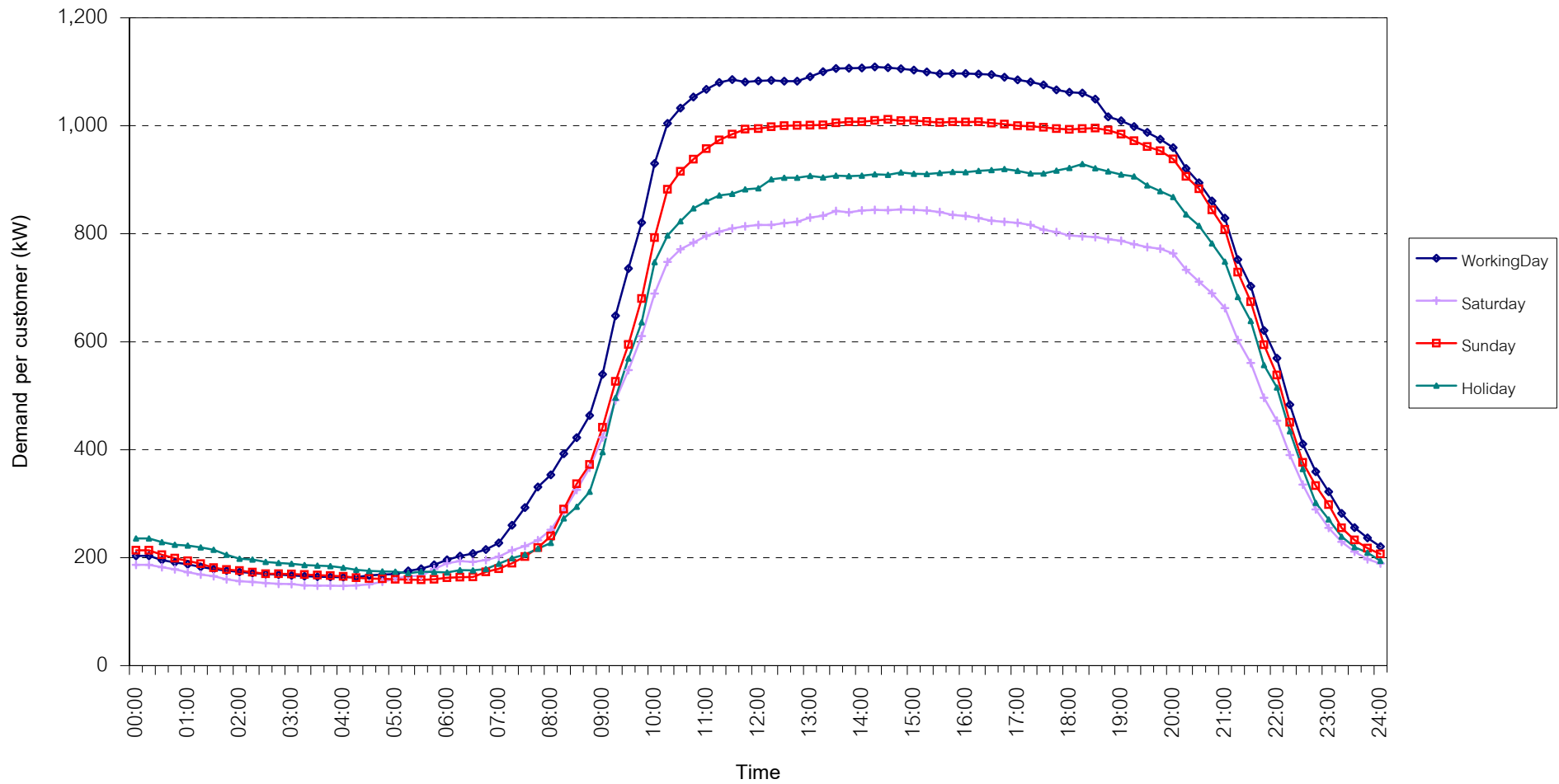
กราฟรูปที่ 16



TSIC 83 (Real Estate) Load Profile

Date: 1 Feb, 2008 to 29 Feb, 2008

Number of sample customers = 33



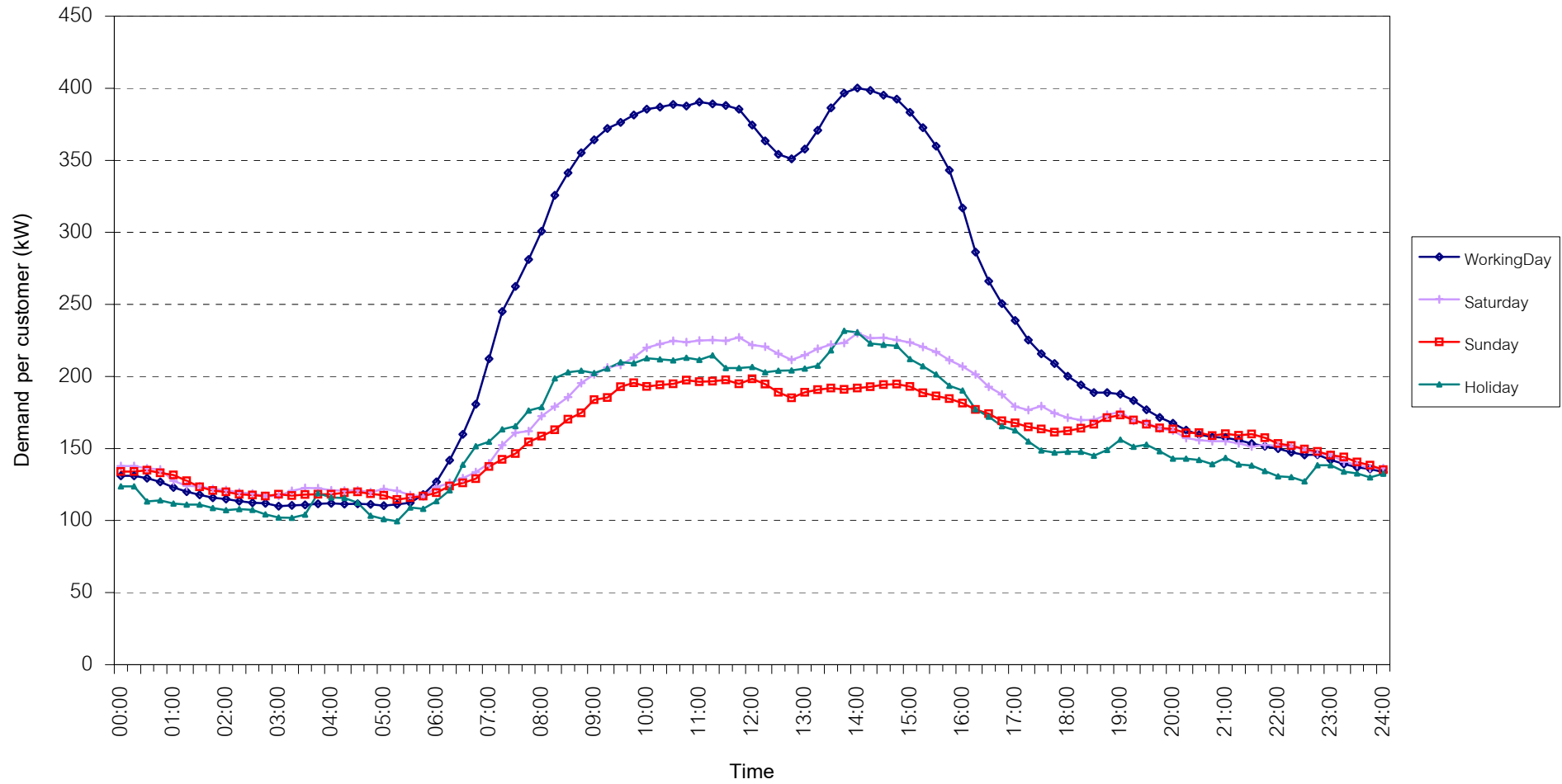
กราฟรูปที่ 17



## TSIC 93 (Social Services) Load Profile

Date: 1 Feb, 2008 to 29 Feb, 2008

Number of sample customers = 21

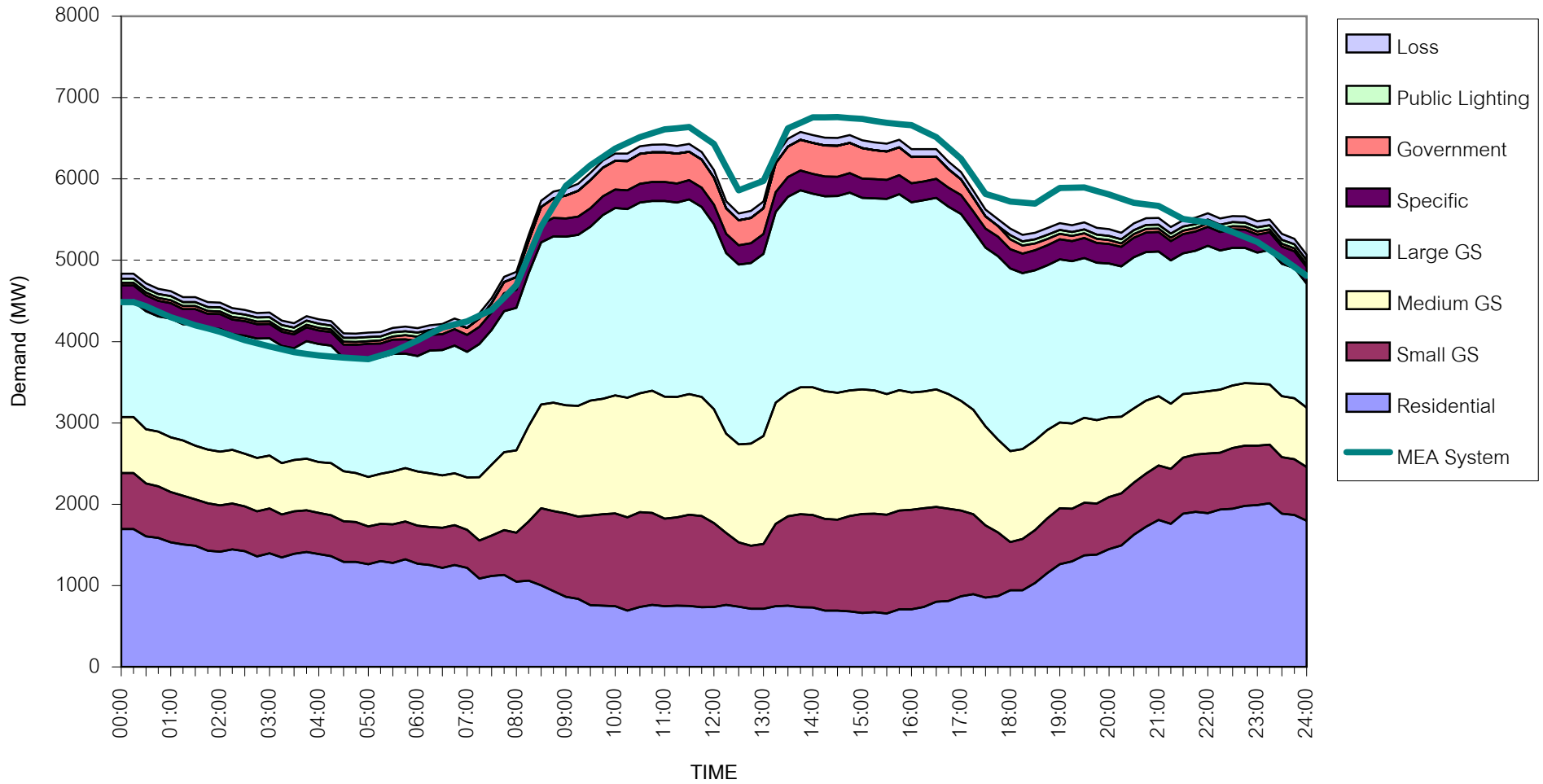


กราฟรูปที่ 18



### MEA's System Load Profile

Peak Day 12 February, 2008 at 14:30



กราฟรูปที่ 19