



# ข้อมูลการศึกษาลักษณะการใช้ไฟฟ้า

เดือน ธันวาคม 2552



Table 1-1

COINCIDENT WITH LOAD RESEARCH SYSTEM'S PEAK ON December 16,2009 time 10:00 6,415.67 MW  
( MEA SYSTEM'S PEAK ON December 16,2009 time 14:30 6,869.94 MW )

CLASS	Number of Customers	Kilowatt hours	Coincident Peak (MEA System Peak at time 14:30)		Coincident Peak (Load Research System Peak at time 10:00)		Sector Diversified Demand		
			MW	Contribution (%)	MW	Contribution (%)	Max MW.	Date	Time
Residential	2,404,275	722,162,881	724.43	11.42	859.35	13.39	1,866.05	17 Dec 09	23:30
Small General Service	478,574	514,495,820	1,074.43	16.93	1,145.20	17.85	1,237.20	24 Dec 09	15:30
Medium General Service	19,385	596,885,745	926.75	14.61	932.12	14.53	2,069.56	4 Dec 09	14:00
Large General Service	1,800	1,242,761,770	2,726.42	42.97	2,576.33	40.16	2,591.20	16 Dec 09	14:15
Specific Business	2,415	142,938,095	239.10	3.77	231.87	3.61	266.20	17 Dec 09	21:45
Government and non Profit organization	11,678	98,845,439	378.14	5.96	415.21	6.47	480.85	29 Dec 09	11:30
Public Lighting	4,176	25,726,186	0.00	0.00	0.00	0.00	73.69	-	-
Loss	-	131,020,064	276.01	4.35	255.60	3.98	276.01	16 Dec 09	14:30
TOTAL	2,922,303	3,474,836,000	6,345.28	100	6,415.67	100	6,415.67	16 Dec 09	10:00



Table 1-2

Number of sample customers on December, 2009

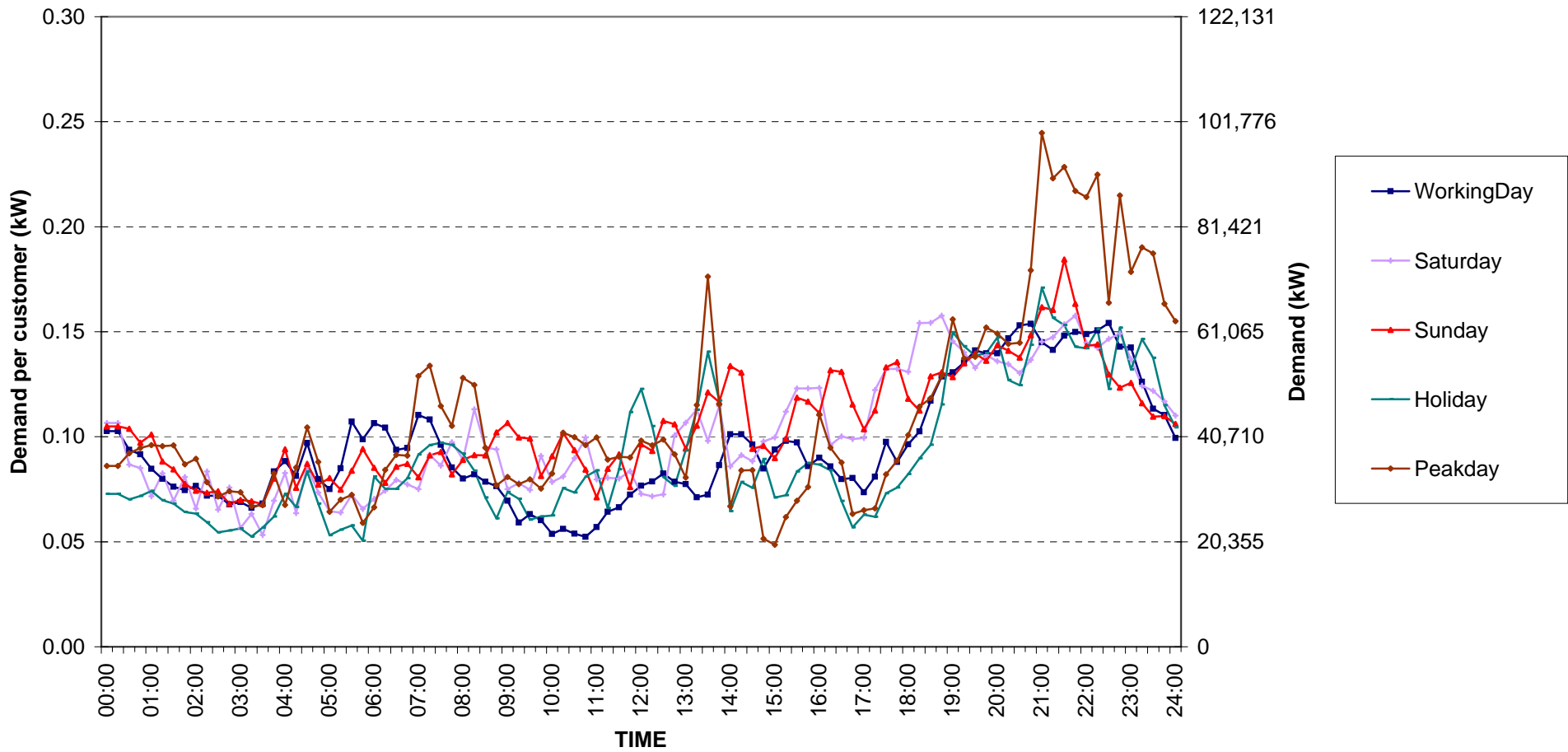
CLASS	Number of sample customers (Target)	Number of sample customers (Collected)
Residential	154	154
Small General Service	205	205
Medium General Service	135	135
Large General Service	284	284
Specific Business	74	74
Government and Non-profit Organization	50	50
TOTAL	902	902



## Residential ( Energy Consumption less than 150 kWh per month )

Date: 1 Dec, 2009 to 31 Dec, 2009

Number of sample customers = 52



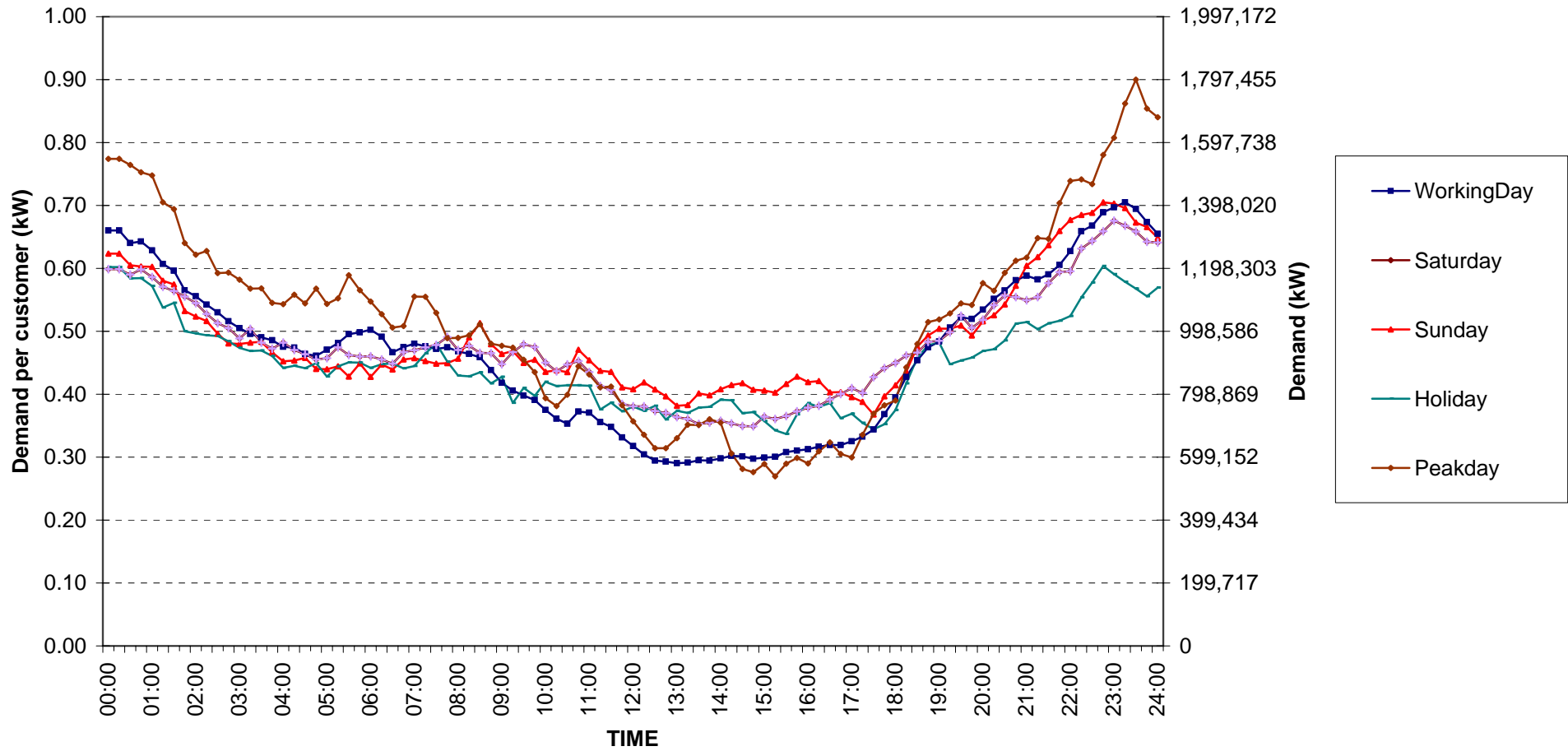
กราฟรูปที่ 1



## Residential ( Energy Consumption more than 150 kWh per month )

Date: 1 Dec, 2009 to 31 Dec, 2009

Number of sample customers = 102



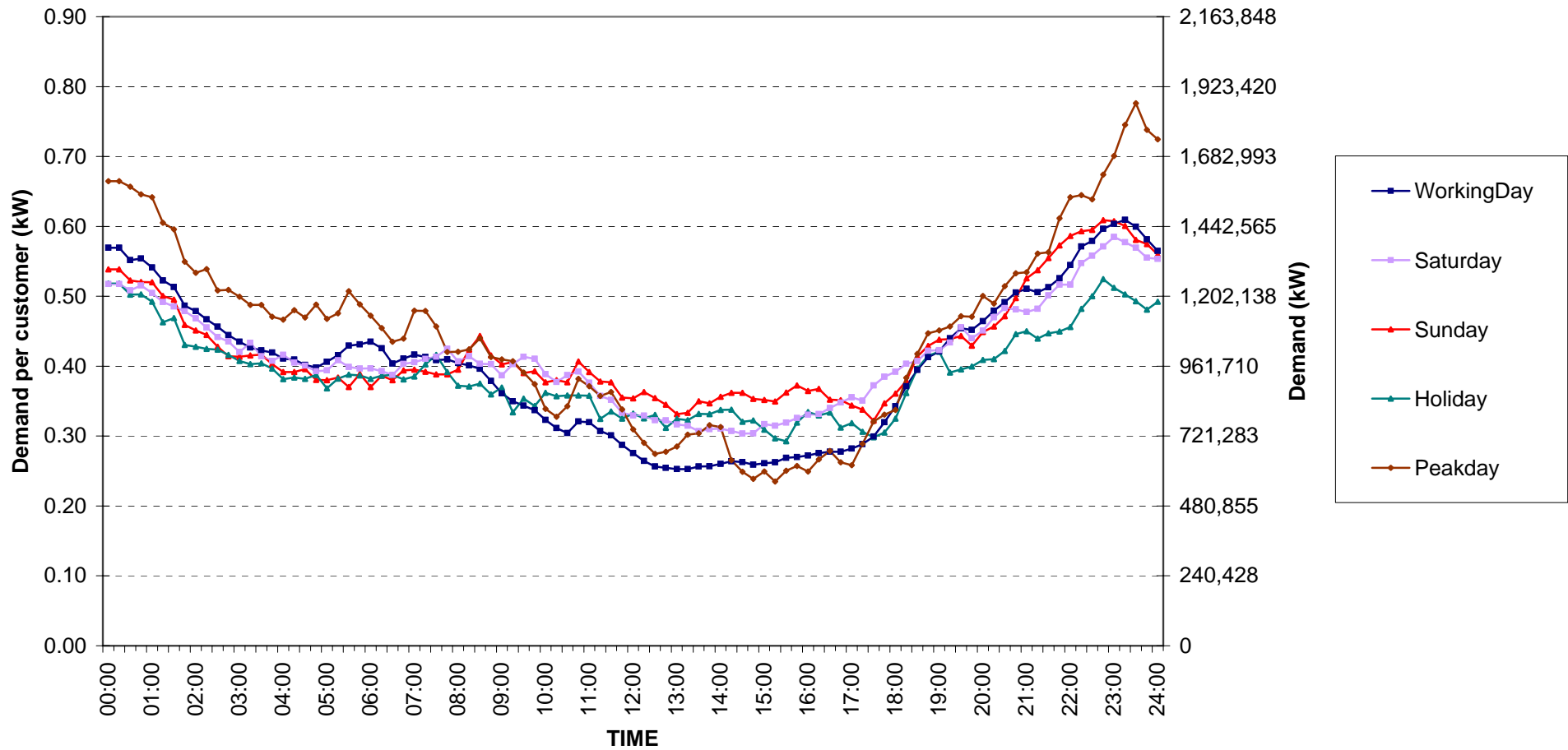
กราฟรูปที่ 2



## Residential Load Profile

Date: 1 Dec, 2009 to 31 Dec, 2009

Number of sample customers = 154



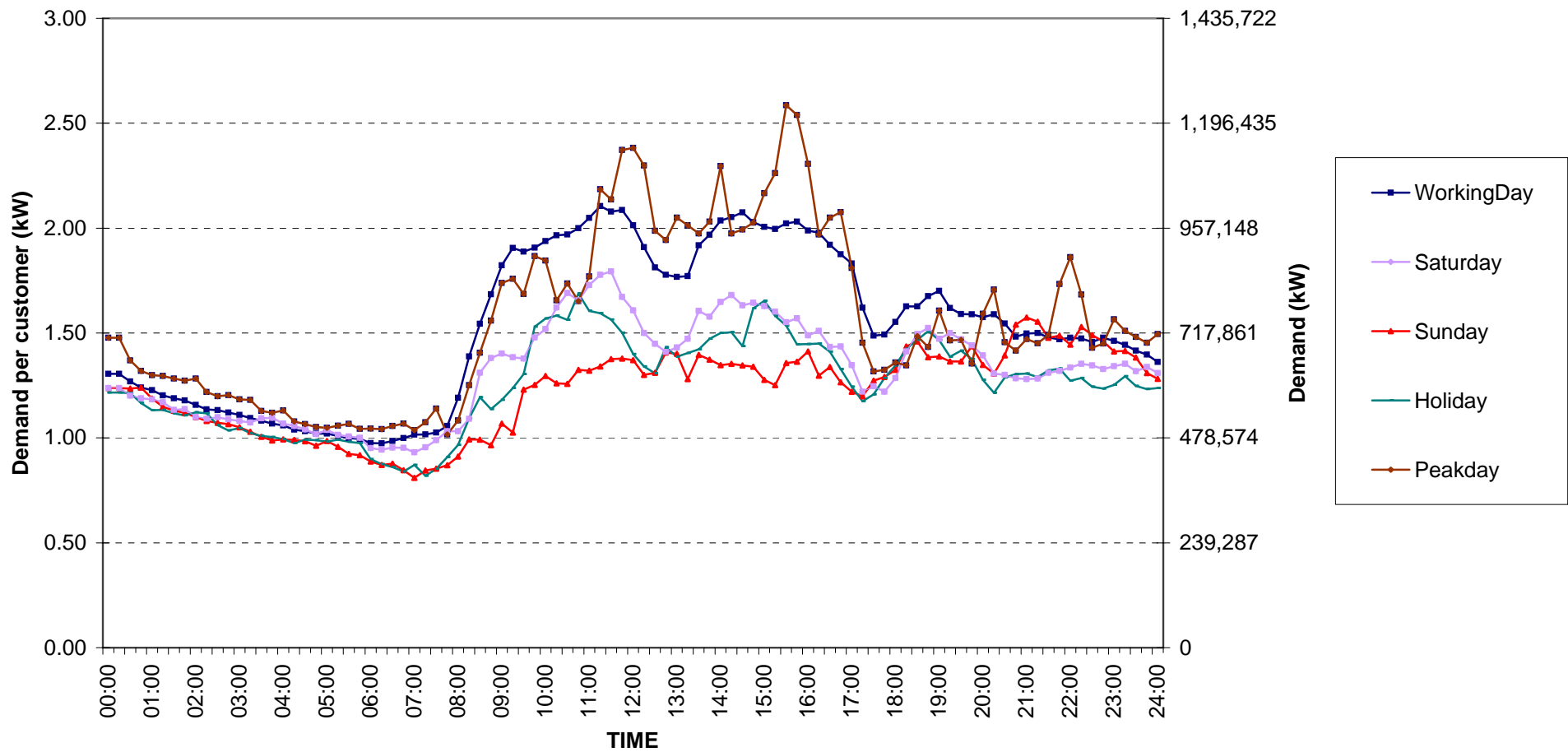
กราฟรูปที่ 3



Small General Services Load Profile

Date: 1 Dec, 2009 to 31 Dec, 2009

Number of sample customers = 205



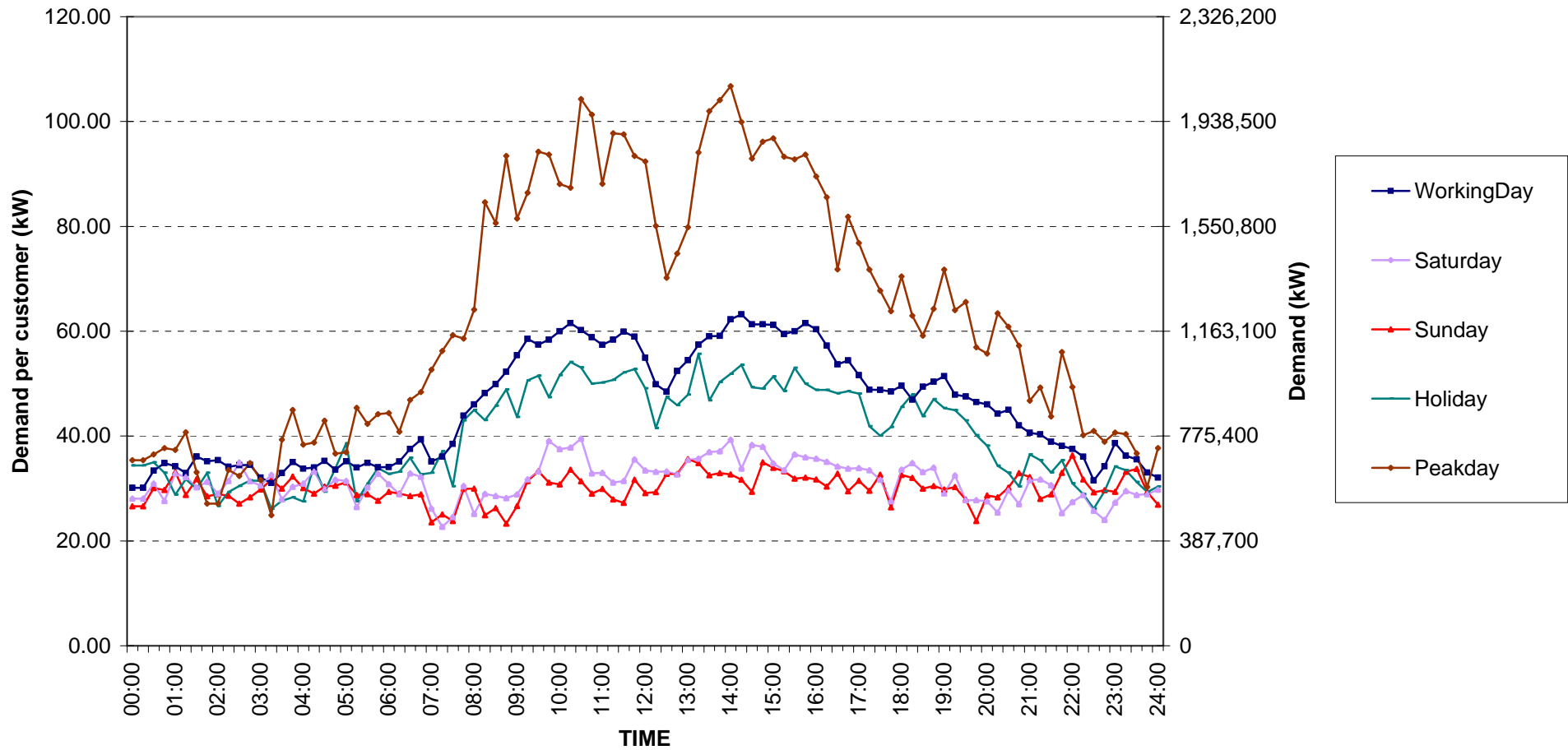
กราฟรูปที่ 4



Medium General Services Load Profile

Date: 1 Dec, 2009 to 31 Dec, 2009

Number of sample customers = 135



กราฟรูปที่ 5

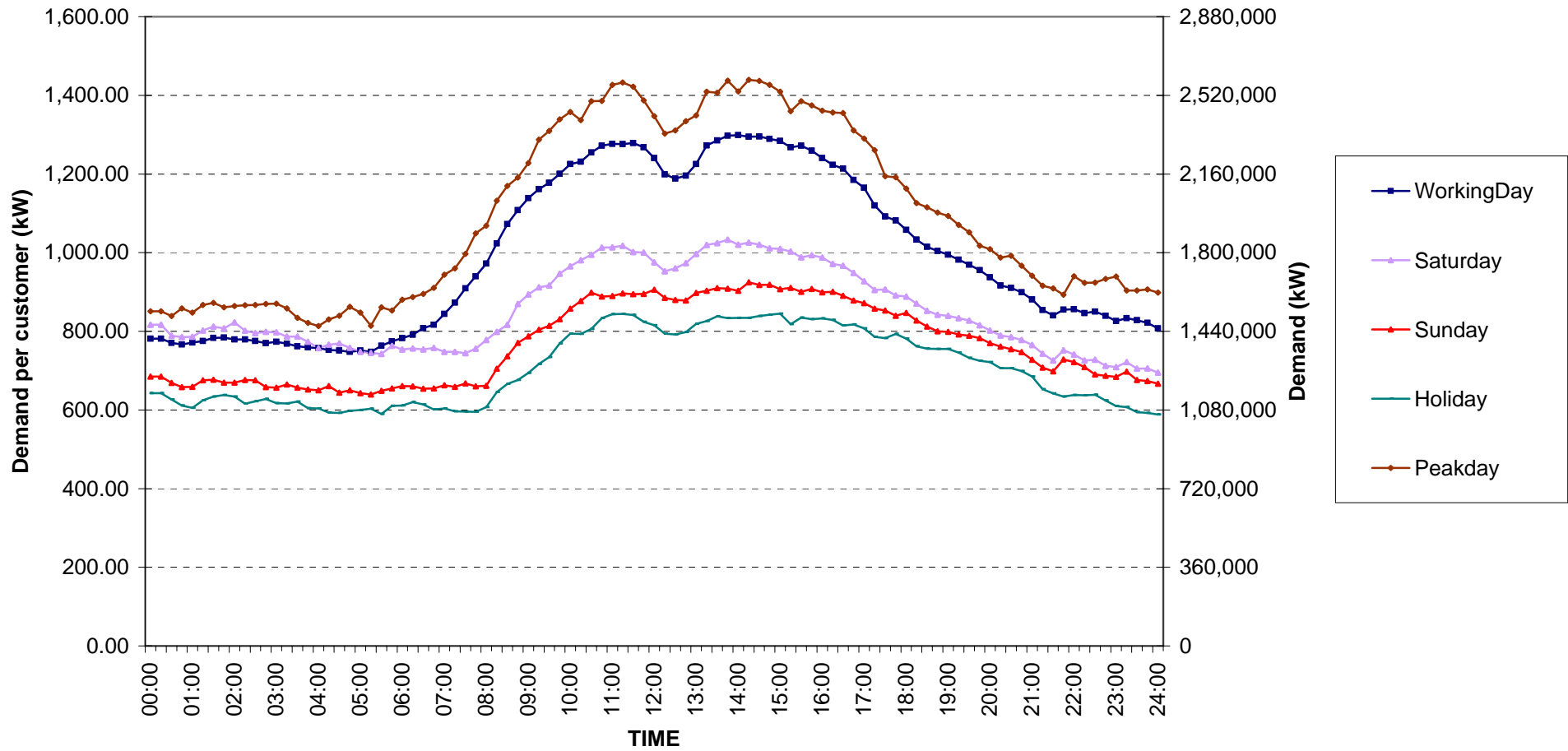




Large General Services Load Profile

Date: 1 Dec, 2009 to 31 Dec, 2009

Number of sample customers = 284



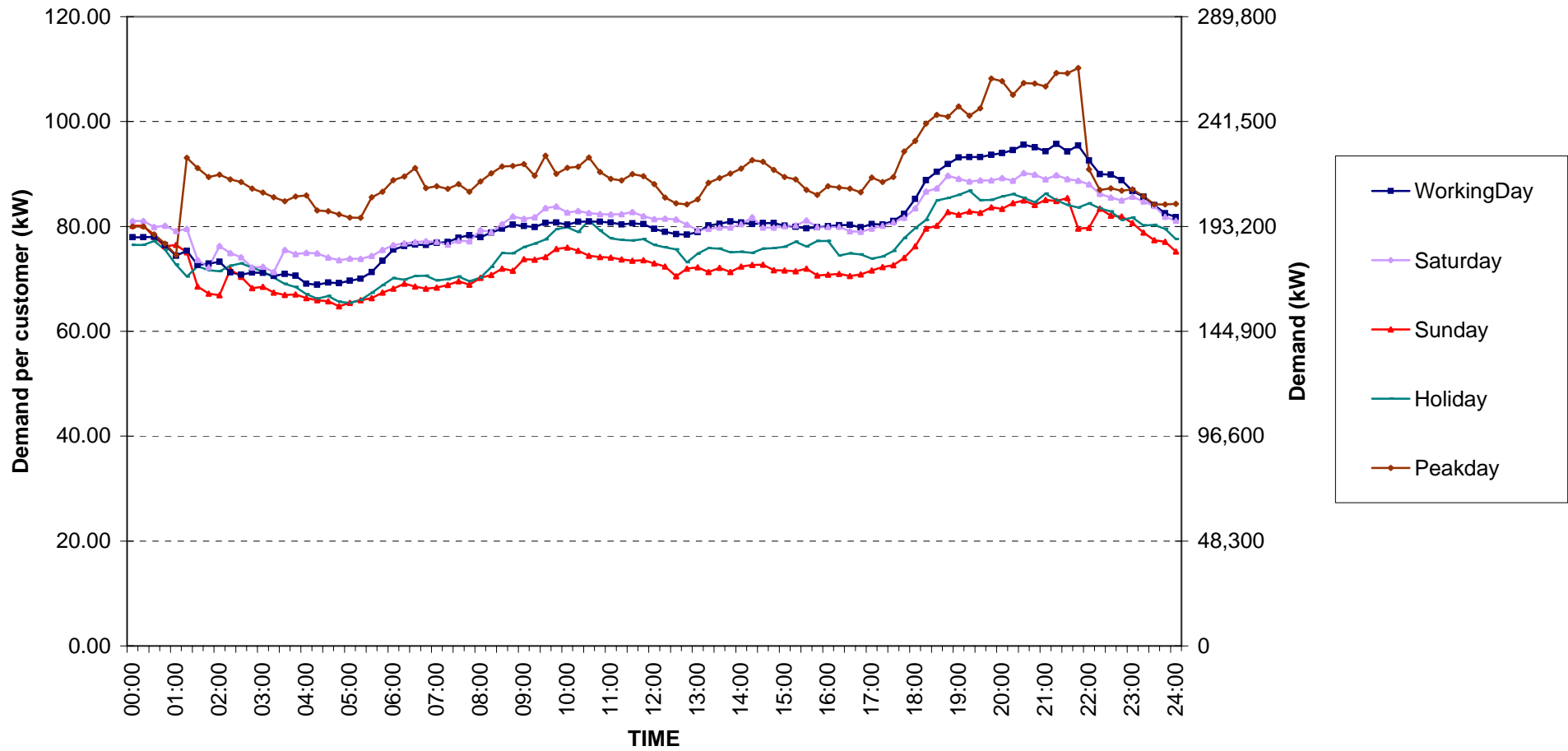
กราฟรูปที่ 6



## Specific Business Load Profile

Date: 1 Dec, 2009 to 31 Dec, 2009

Number of sample customers = 74



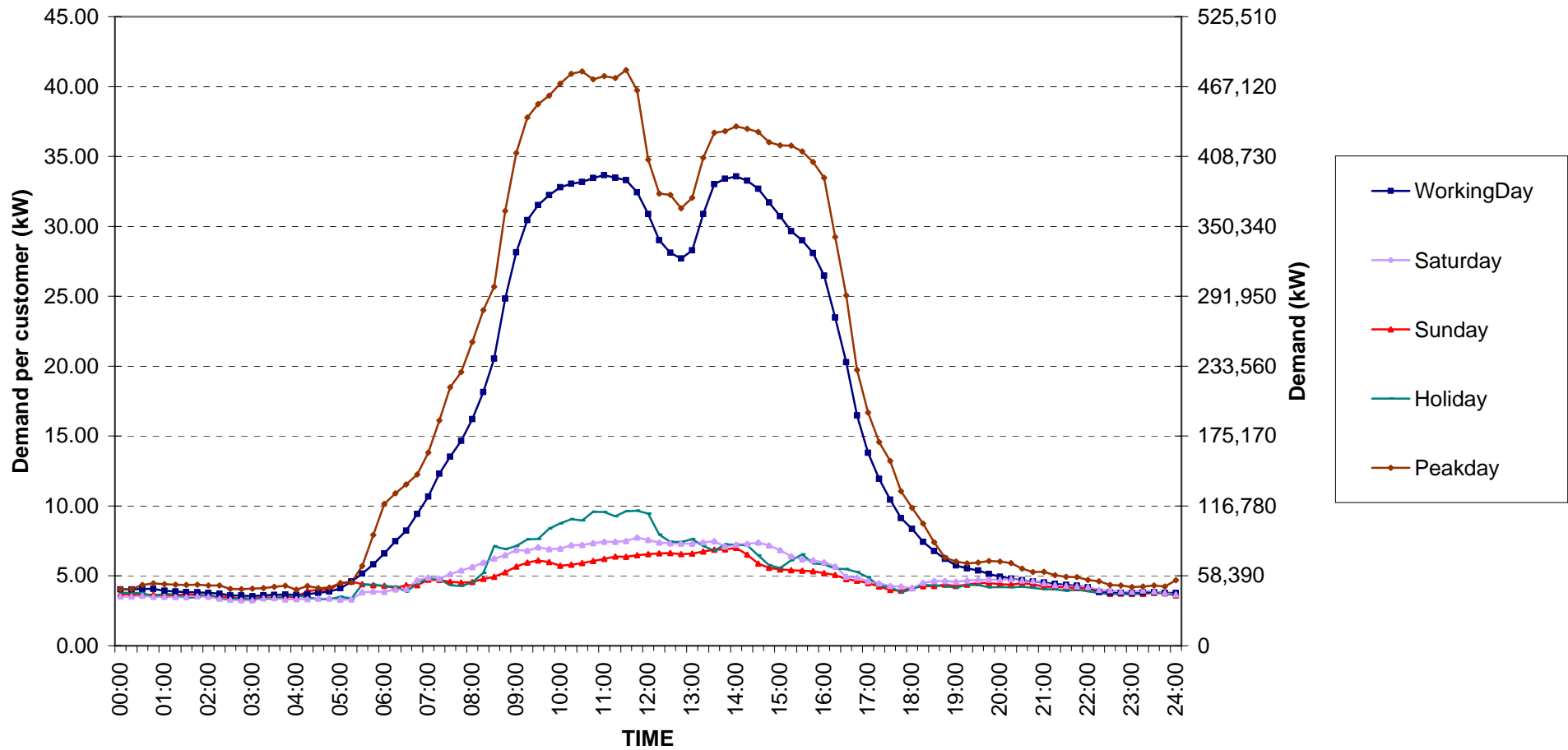
กราฟรูปที่ 7



## Government institutions and non-profit organizations Load Profile

Date: 1 Dec, 2009 to 31 Dec, 2009

Number of sample customers = 50



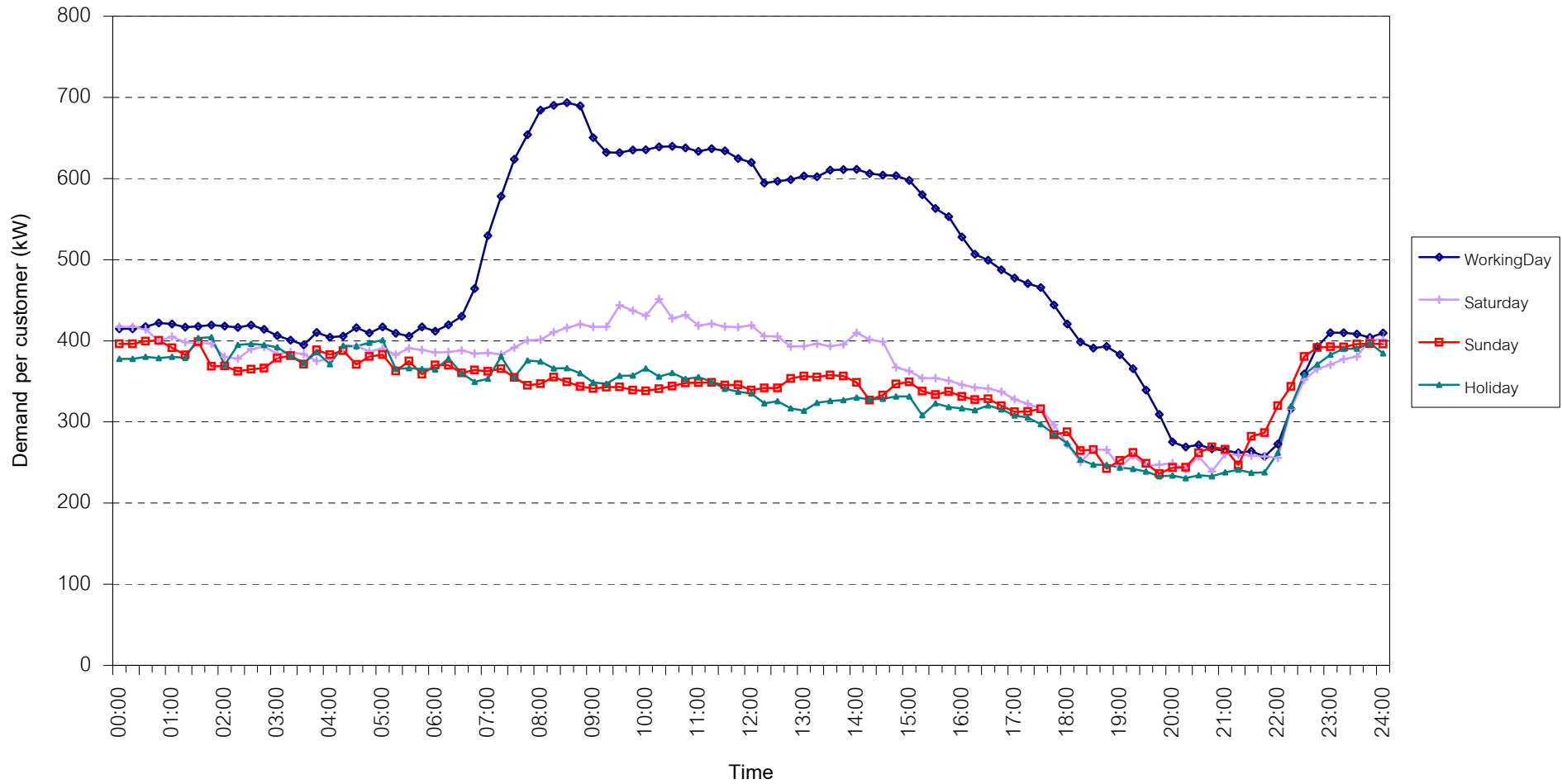
กราฟรูปที่ 8



## TSIC 31 (Food Processing) Load Profile

Date: 1 Dec, 2009 to 31 Dec, 2009

Number of sample customers = 30



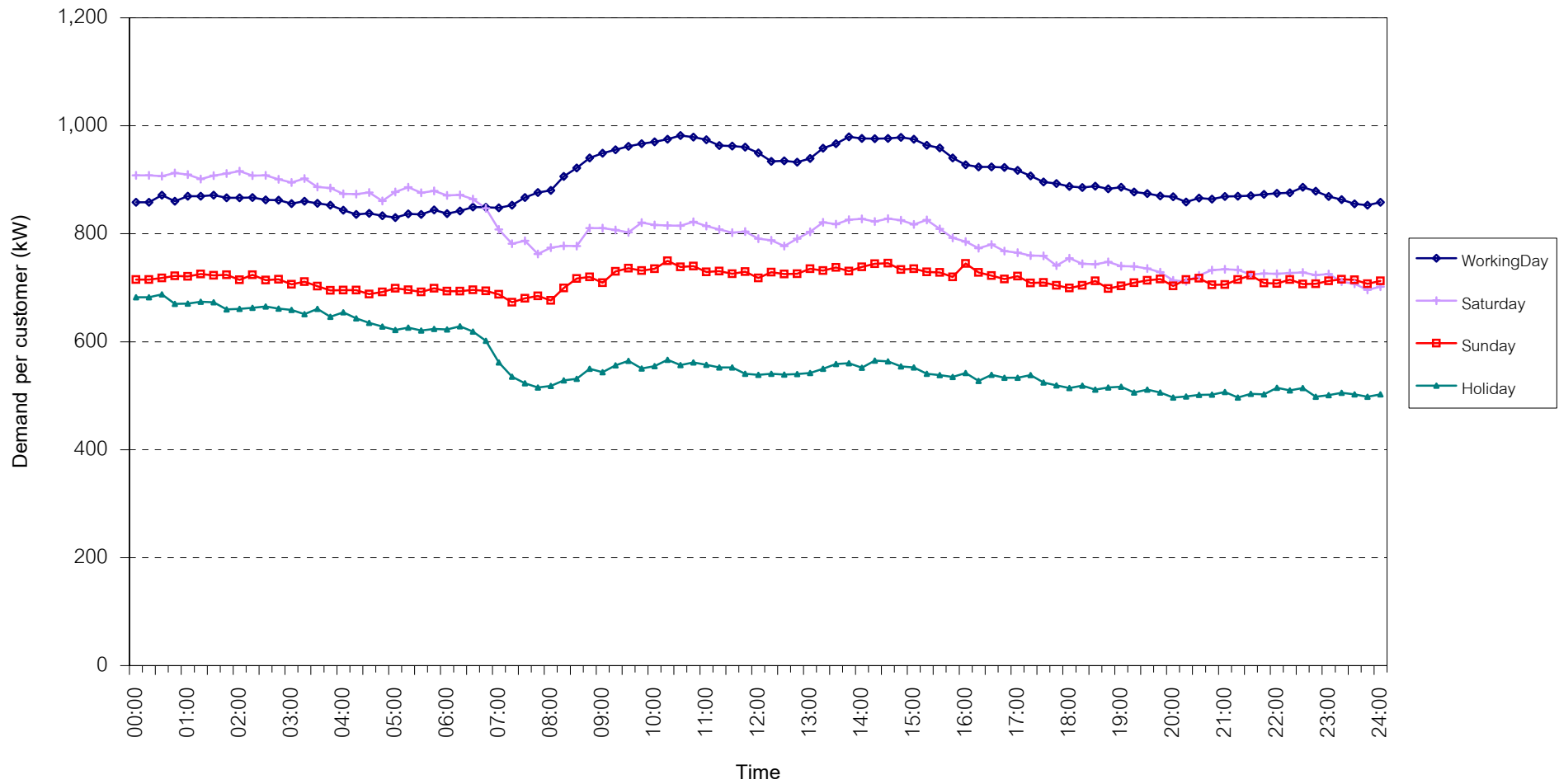
กราฟรูปที่ 9



## TSIC 32 (Textiles) Load Profile

Date: 1 Dec, 2009 to 31 Dec, 2009

Number of sample customers = 63



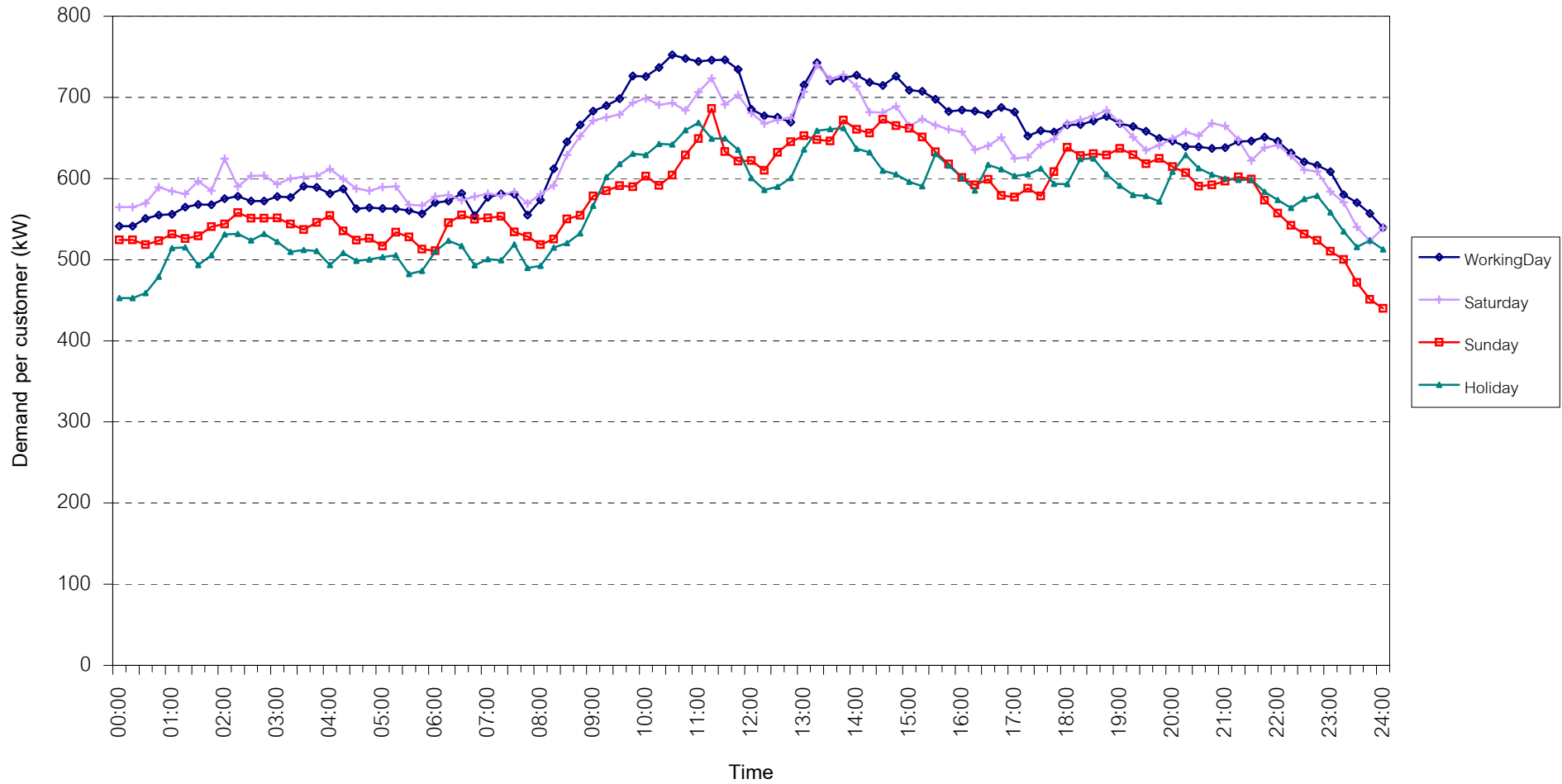
กราฟรูปที่ 10



## TSIC 34 (Paper & Printing) Load Profile

Date: 1 Dec, 2009 to 31 Dec, 2009

Number of sample customers = 12



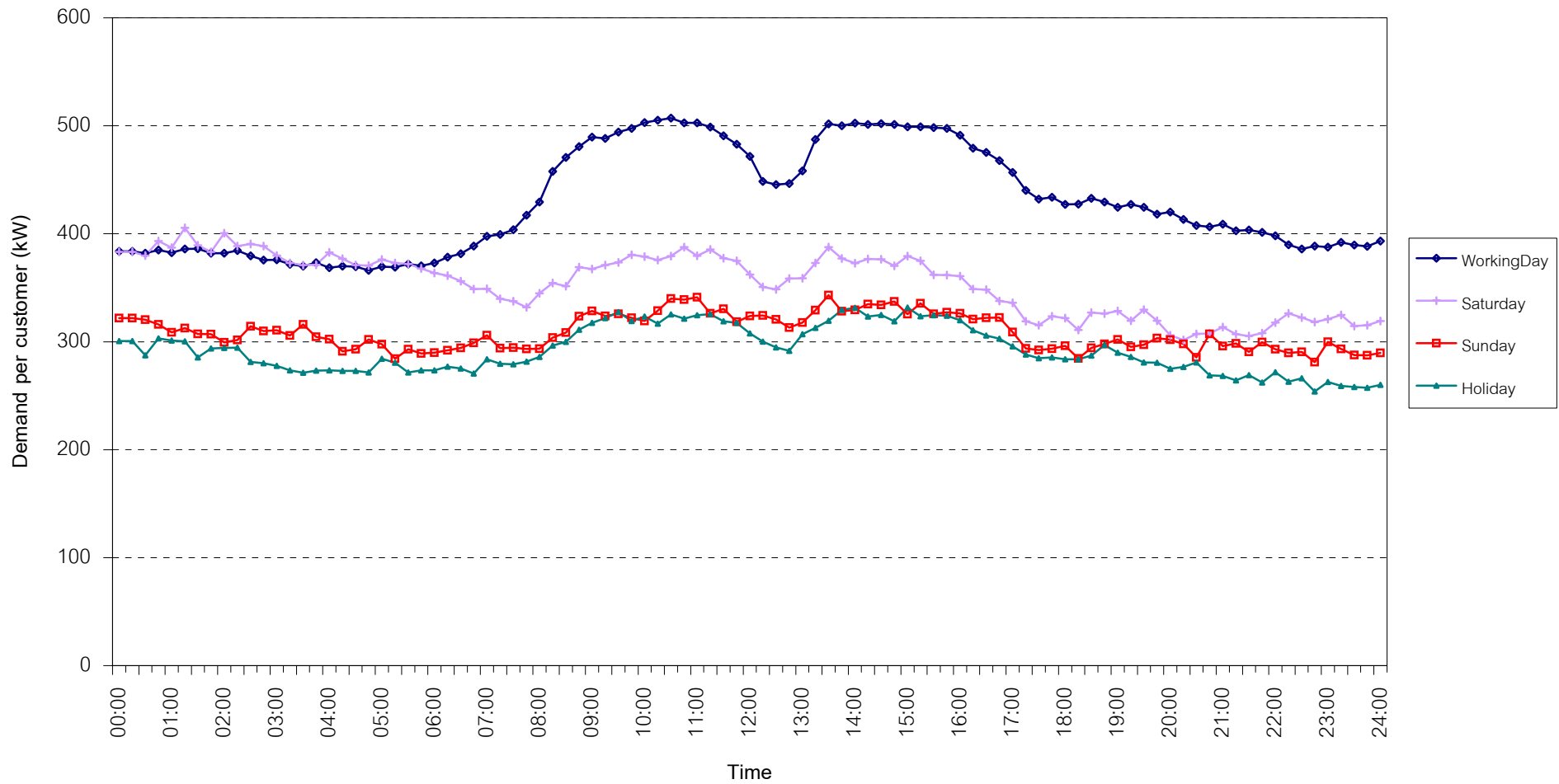
กราฟรูปที่ 11



## TSIC 35 (Chemical & Petroleum) Load Profile

Date: 1 Dec, 2009 to 31 Dec, 2009

Number of sample customers = 72



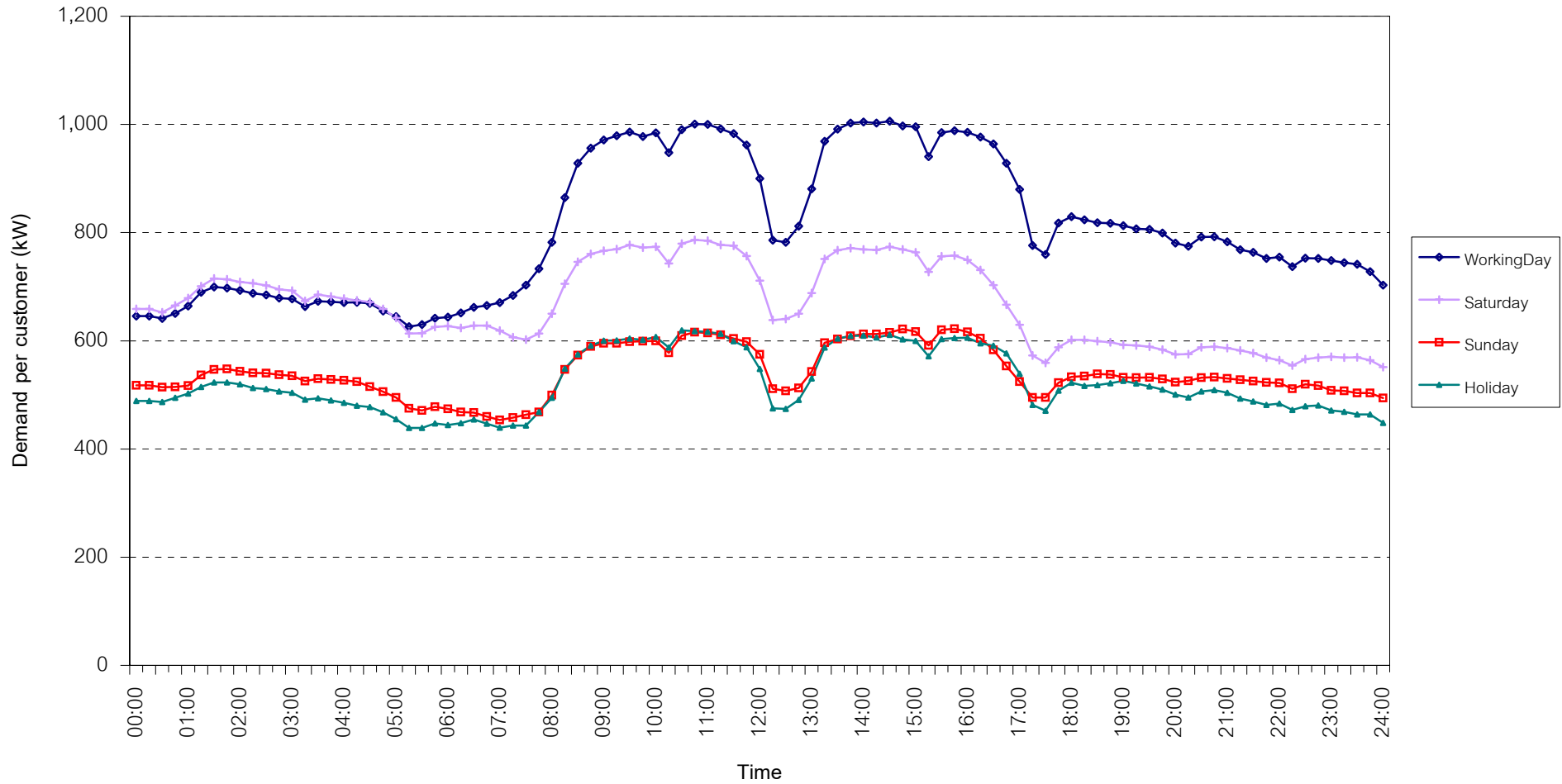
กราฟรูปที่ 12



## TSIC 38 (Fabricated Metal Products) Load Profile

Date: 1 Dec, 2009 to 31 Dec, 2009

Number of sample customers = 62



กราฟรูปที่ 13

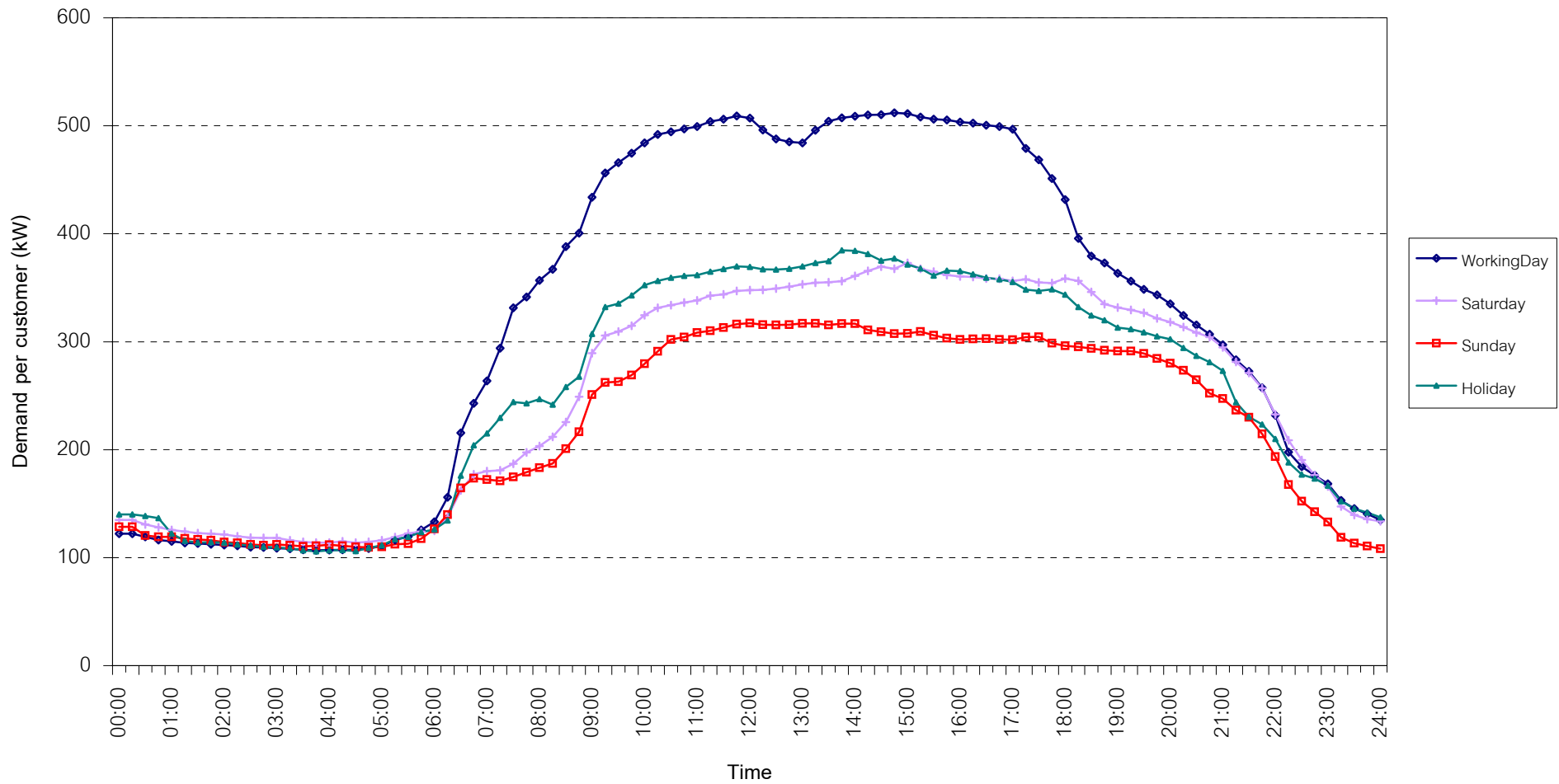




## TSIC 61 (Wholesale Trade) Load Profile

Date: 1 Dec, 2009 to 31 Dec, 2009

Number of sample customers = 36



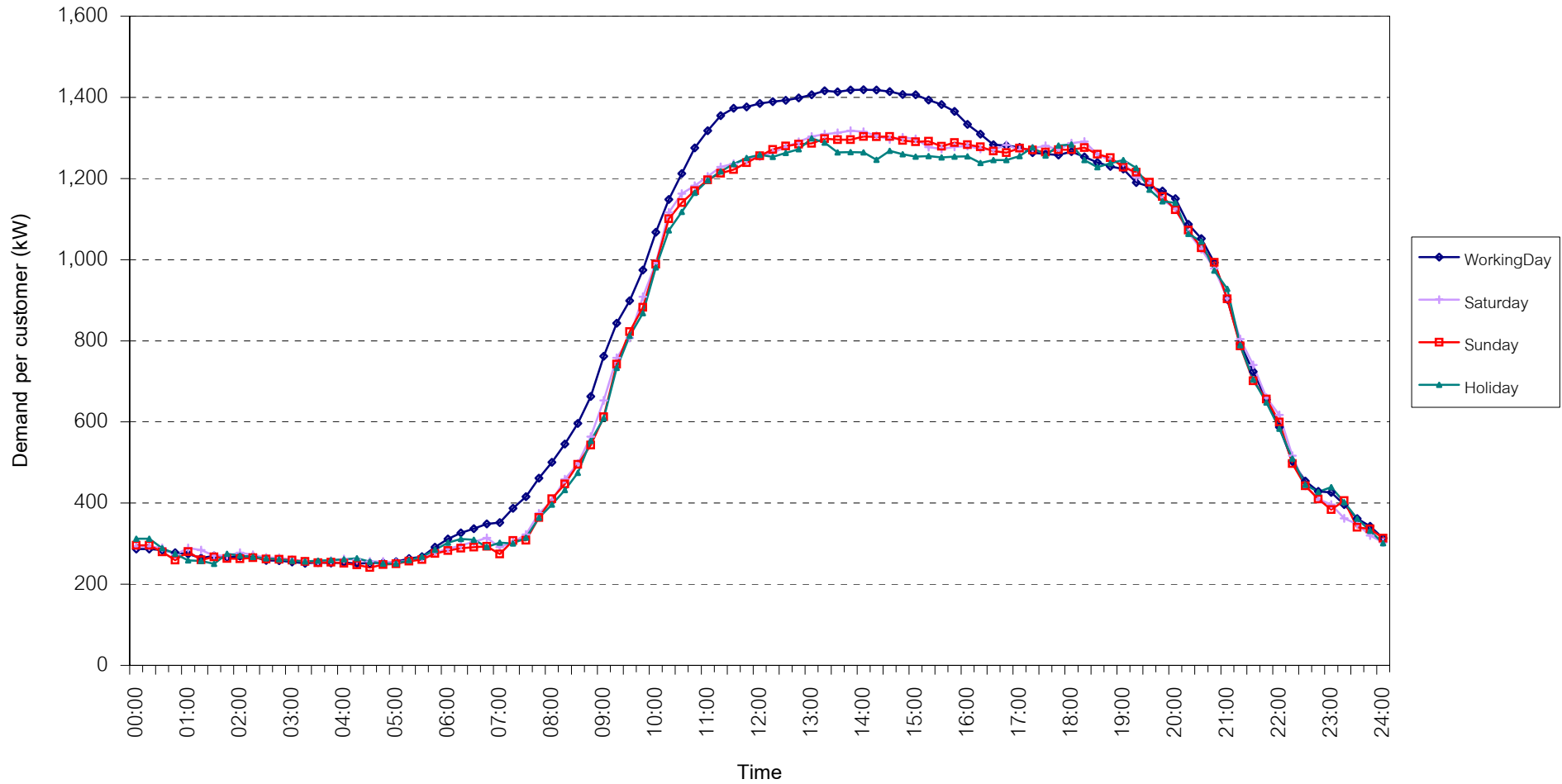
กราฟรูปที่ 14



## TSIC 62 (Retail Trade) Load Profile

Date: 1 Dec, 2009 to 31 Dec, 2009

Number of sample customers = 87



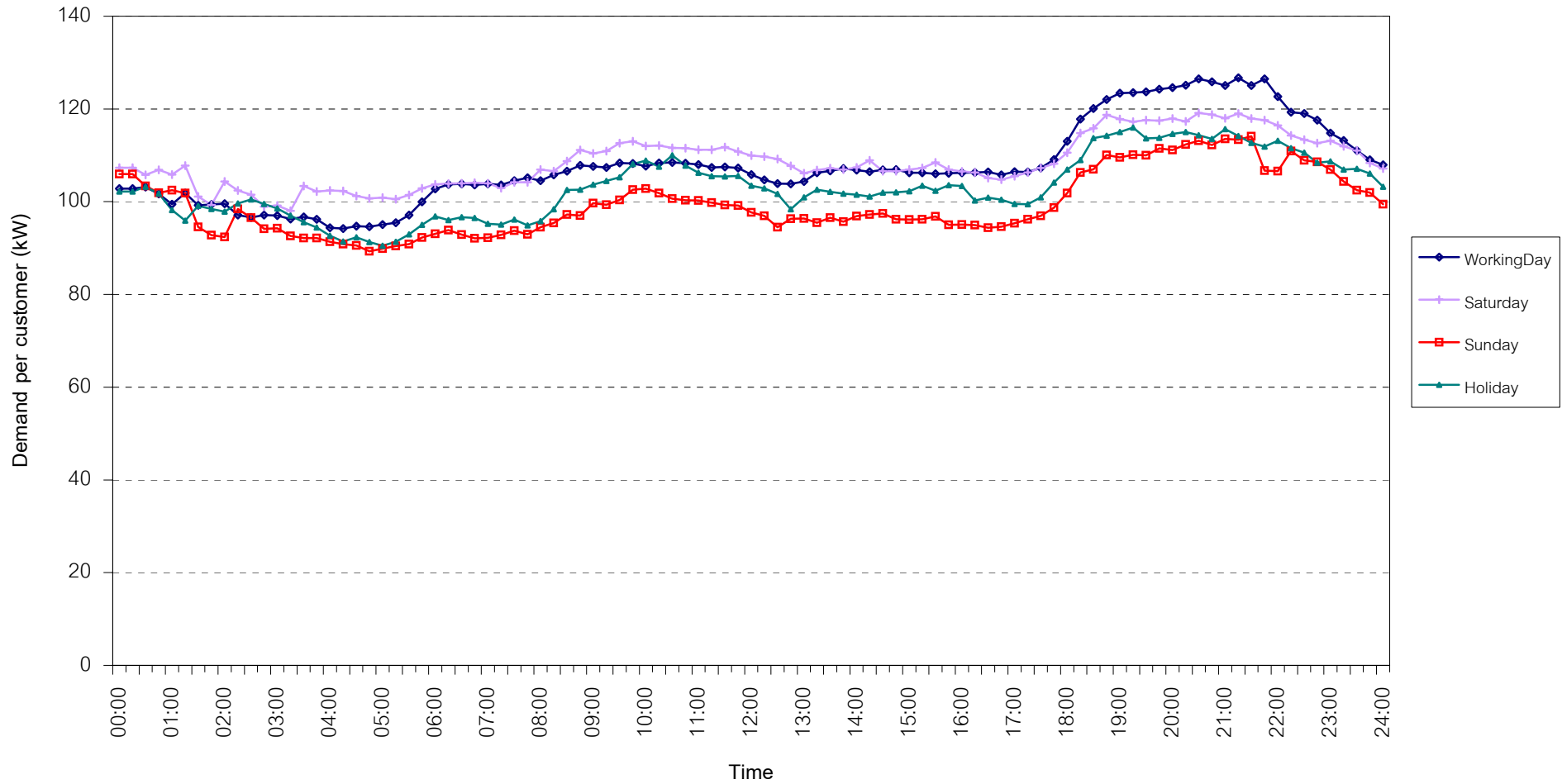
กราฟรูปที่ 15



## TSIC 63 (Hotels and restaurants) Load Profile

Date: 1 Dec, 2009 to 31 Dec, 2009

Number of sample customers = 107



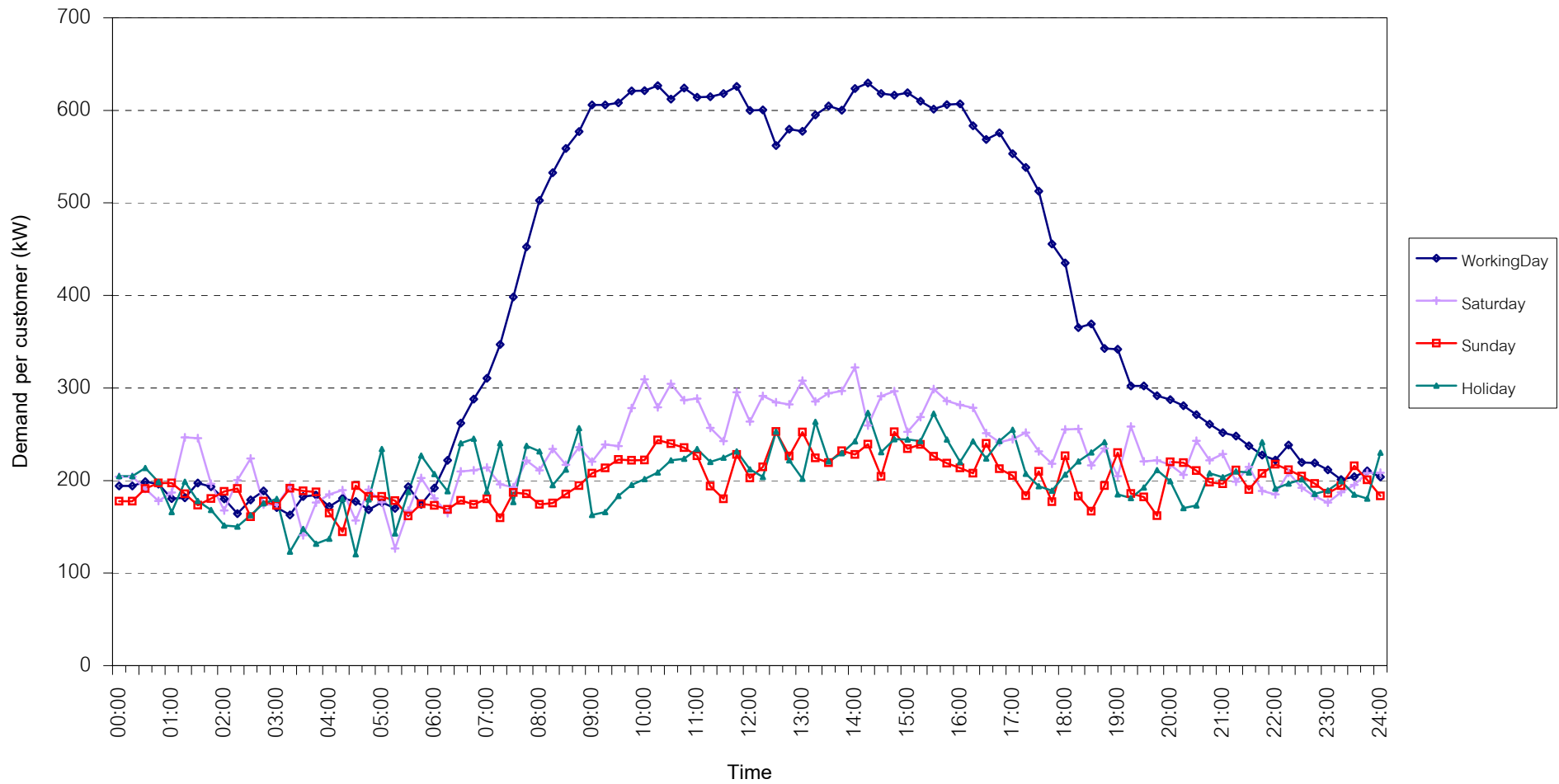
กราฟรูปที่ 16



## TSIC 83 (Real Estate) Load Profile

Date: 1 Dec, 2009 to 31 Dec, 2009

Number of sample customers = 40



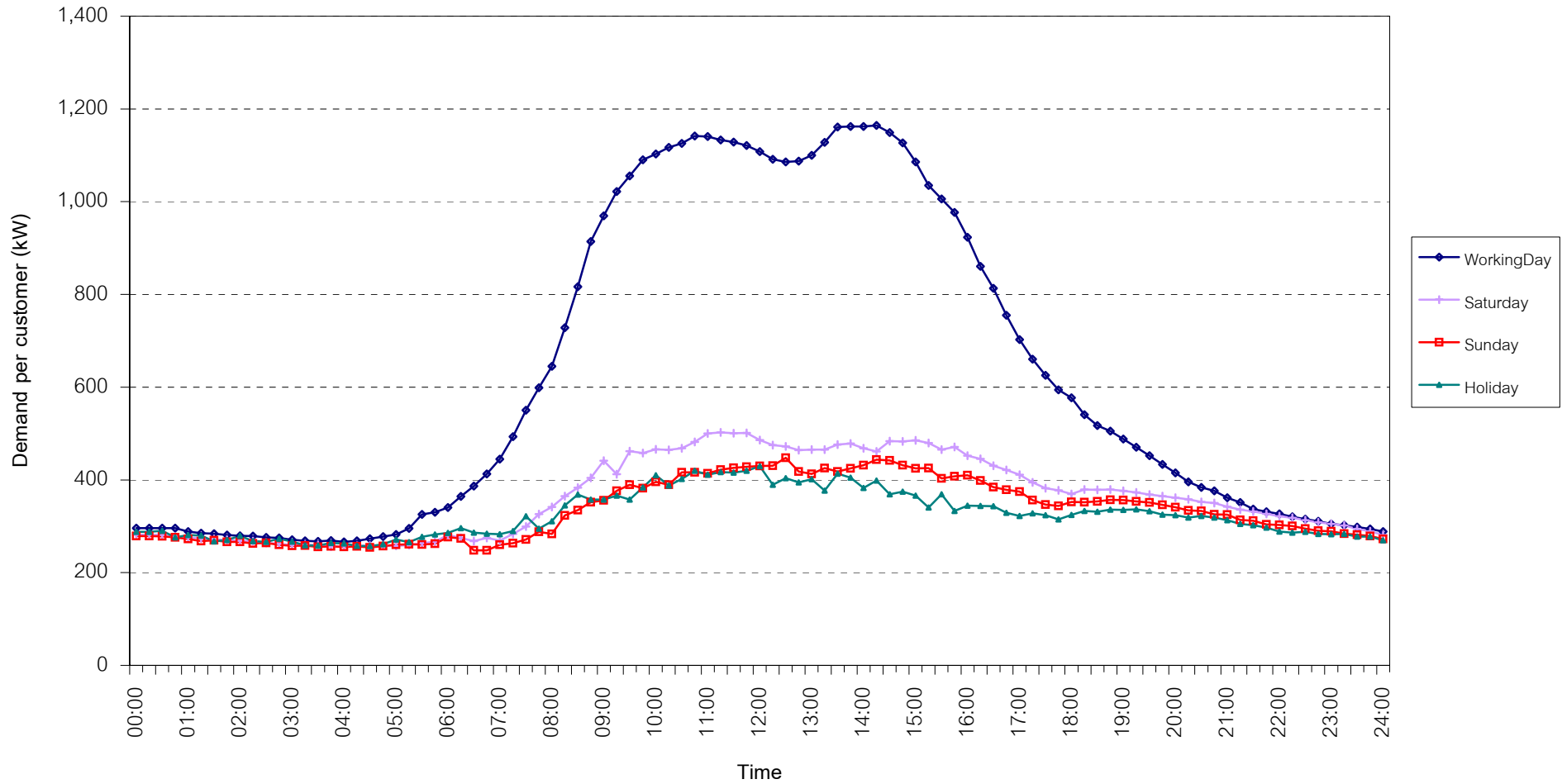
กราฟรูปที่ 17



## TSIC 93 (Social Services) Load Profile

Date: 1 Dec, 2009 to 31 Dec, 2009

Number of sample customers = 25

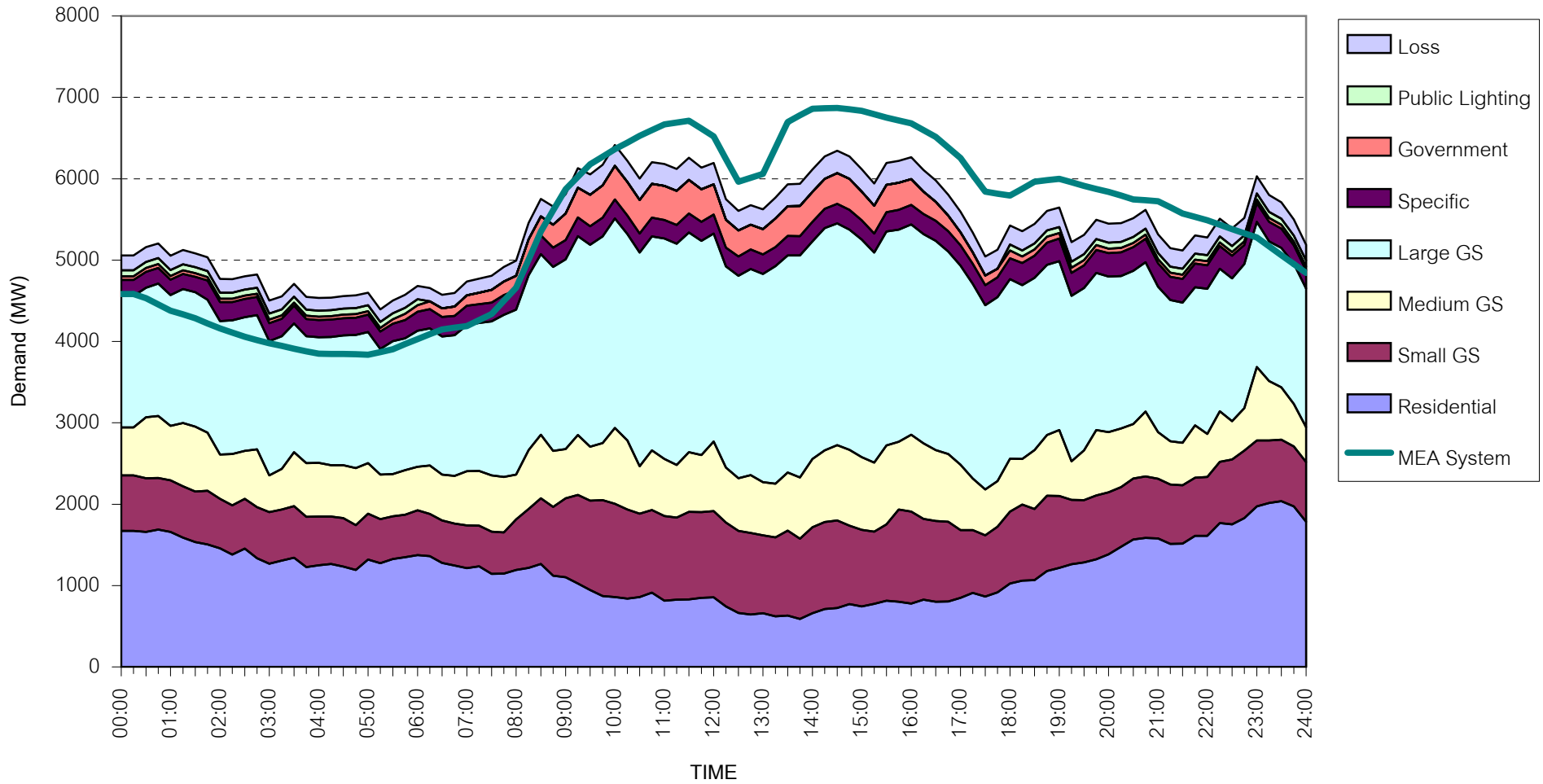


กราฟรูปที่ 18



## MEA's System Load Profile

Peak Day 16 Dec, 2009 at 14:30



กราฟรูปที่ 19