



# ข้อมูลการศึกษาลักษณะการใช้ไฟฟ้า เดือน พฤศจิกายน 2552



Table 1-1

COINCIDENT WITH LOAD RESEARCH SYSTEM'S PEAK ON November 17,2009 time 14:00 6,939.88 MW  
( MEA SYSTEM'S PEAK ON November 17,2009 time 14:30 7,216.58 MW )

CLASS	Number of Customers	Kilowatt hours	Coincident Peak (MEA System Peak at time 14:30)		Coincident Peak (Load Research System Peak at time 13:15)		Sector Diversified Demand		
			MW	Contribution (%)	MW	Contribution (%)	Max MW.	Date	Time
Residential	2,388,347	784,089,677	926.62	13.70	898.68	12.95	2,079.66	15 Nov 09	22:15
Small General Service	480,048	519,358,421	1,099.47	16.25	1,117.95	16.11	1,410.58	14 Nov 09	11:45
Medium General Service	19,485	642,825,383	1,486.75	21.98	1,611.63	23.22	1,675.33	18 Nov 09	13:45
Large General Service	1,676	1,245,181,240	2,456.96	36.32	2,521.90	36.34	2,521.90	17 Nov 09	14:00
Specific Business	2,405	140,582,465	233.21	3.45	232.58	3.35	280.24	16 Nov 09	18:45
Government and non Profit organization	11,291	106,607,040	419.79	6.21	415.09	5.98	557.70	13 Nov 09	11:00
Public Lighting	3,666	24,388,221	0.00	0.00	0.00	0.00	68.60	-	-
Loss	-	68,872,115	142.51	2.11	142.05	2.05	142.51	17 Nov 09	14:30
TOTAL	2,906,918	3,531,904,562	6,765.31	100	6,939.88	100	6,939.88	17 Nov 09	14:00



Table 1-2

Number of sample customers on November, 2009

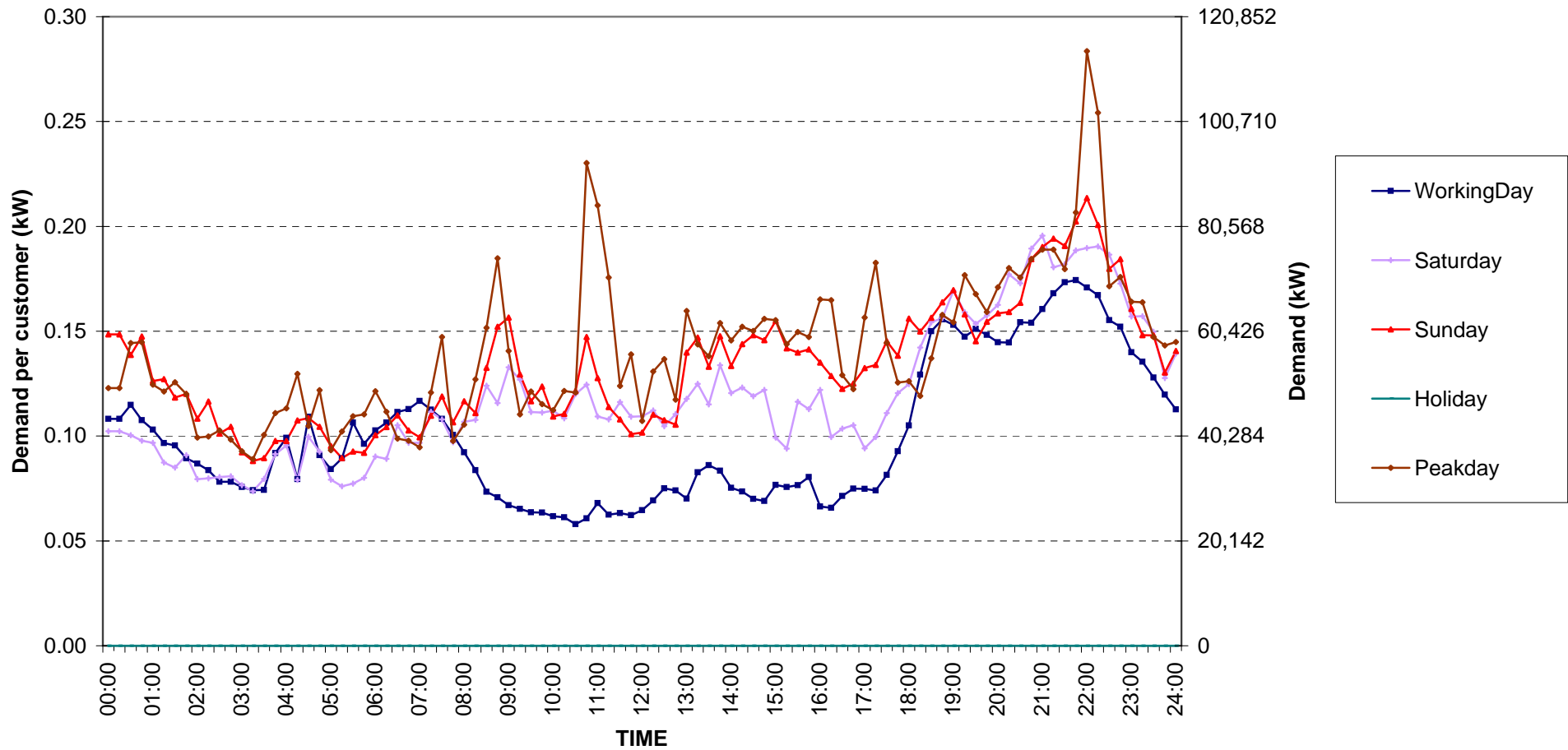
CLASS	Number of sample customers (Target)	Number of sample customers (Collected)
Residential	154	154
Small General Service	205	205
Medium General Service	135	135
Large General Service	284	284
Specific Business	74	74
Government and Non-profit Organization	50	50
TOTAL	902	902



Residential ( Energy Consumption less than 150 kWh per month )

Date: 1 Nov, 2009 to 30 Nov, 2009

Number of sample customers = 52



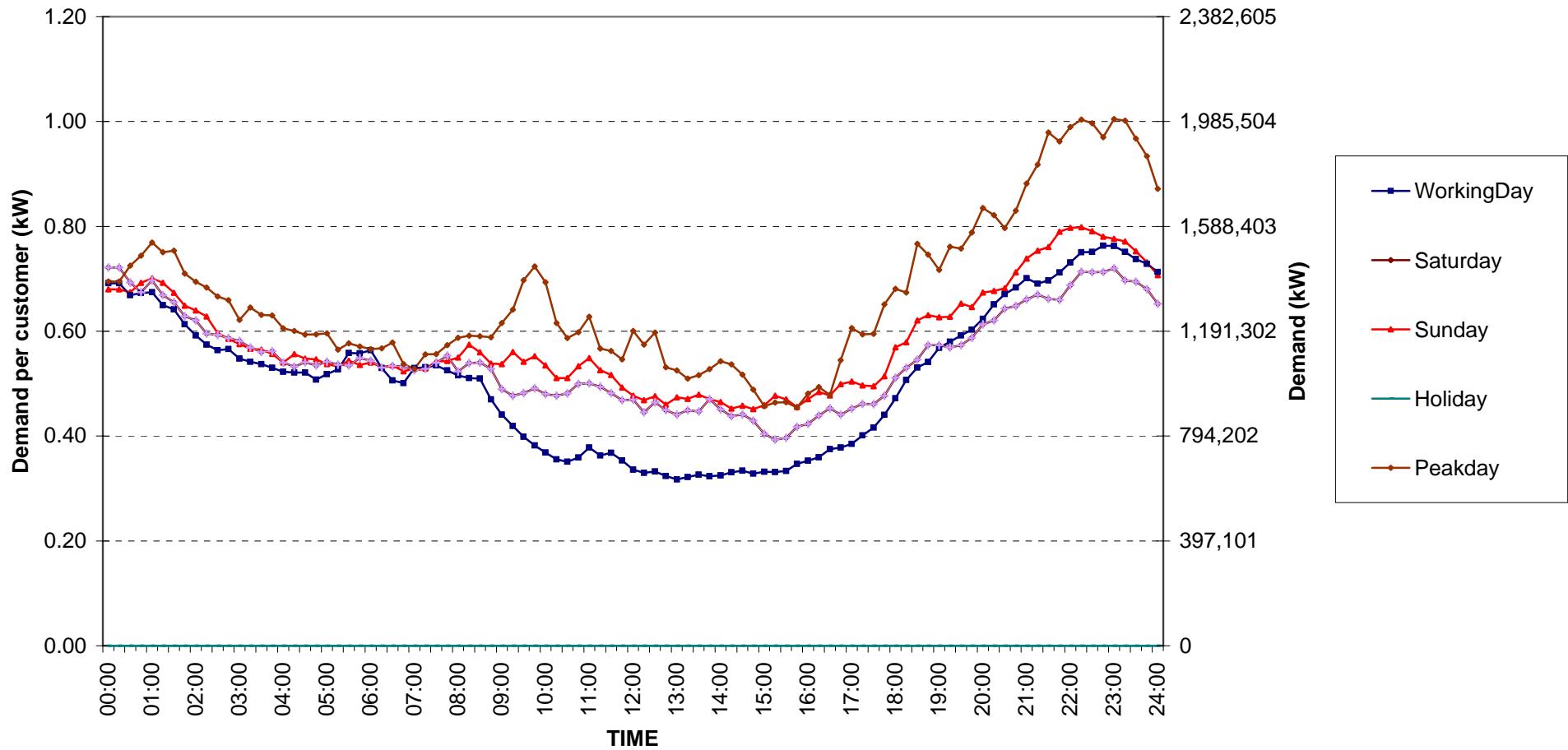
กราฟรูปที่ 1



Residential ( Energy Consumption more than 150 kWh per month )

Date: 1 Nov, 2009 to 30 Nov, 2009

Number of sample customers = 102



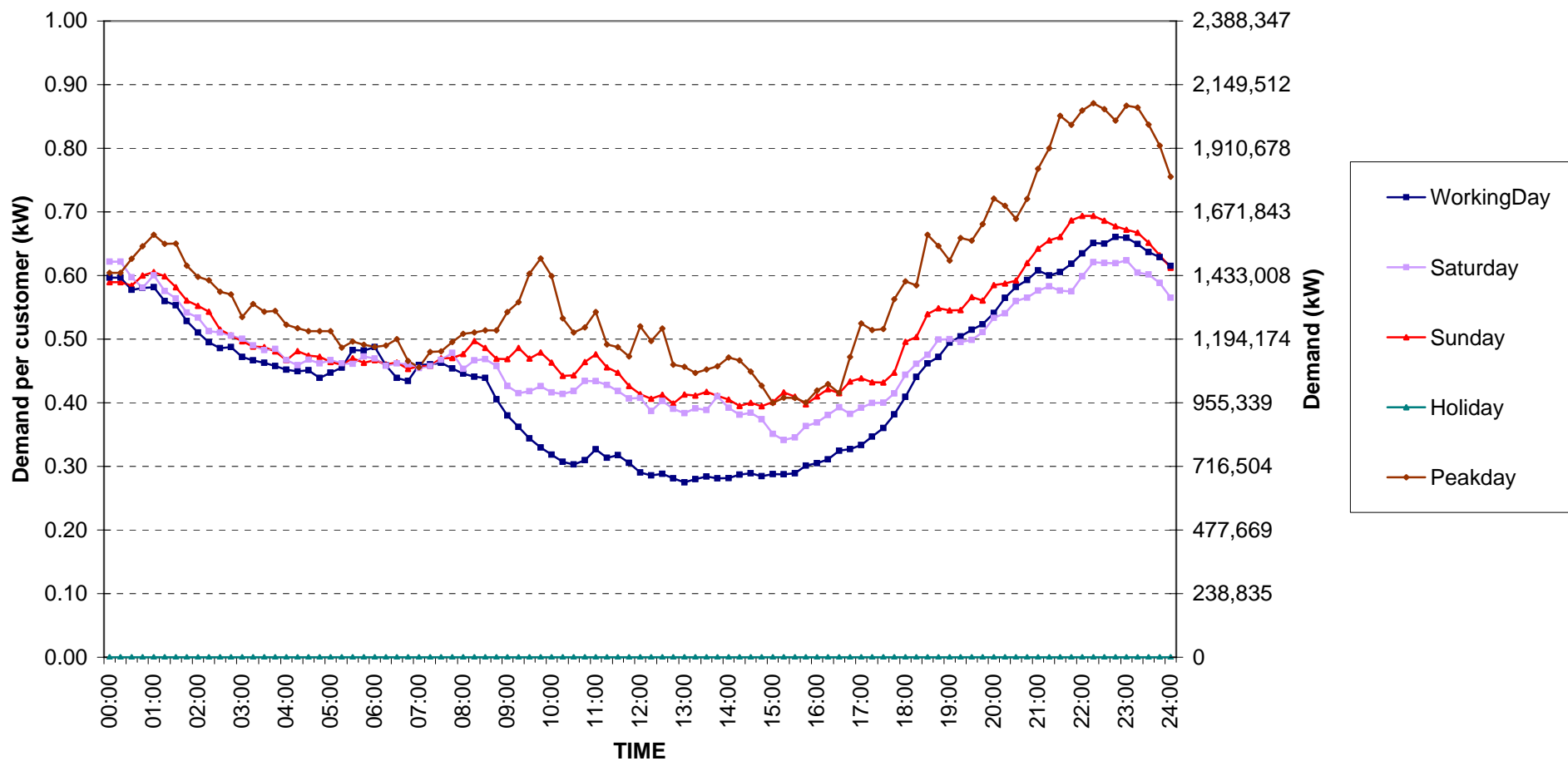
กราฟรูปที่ 2



### Residential Load Profile

Date: 1 Nov, 2009 to 30 Nov, 2009

Number of sample customers = 154



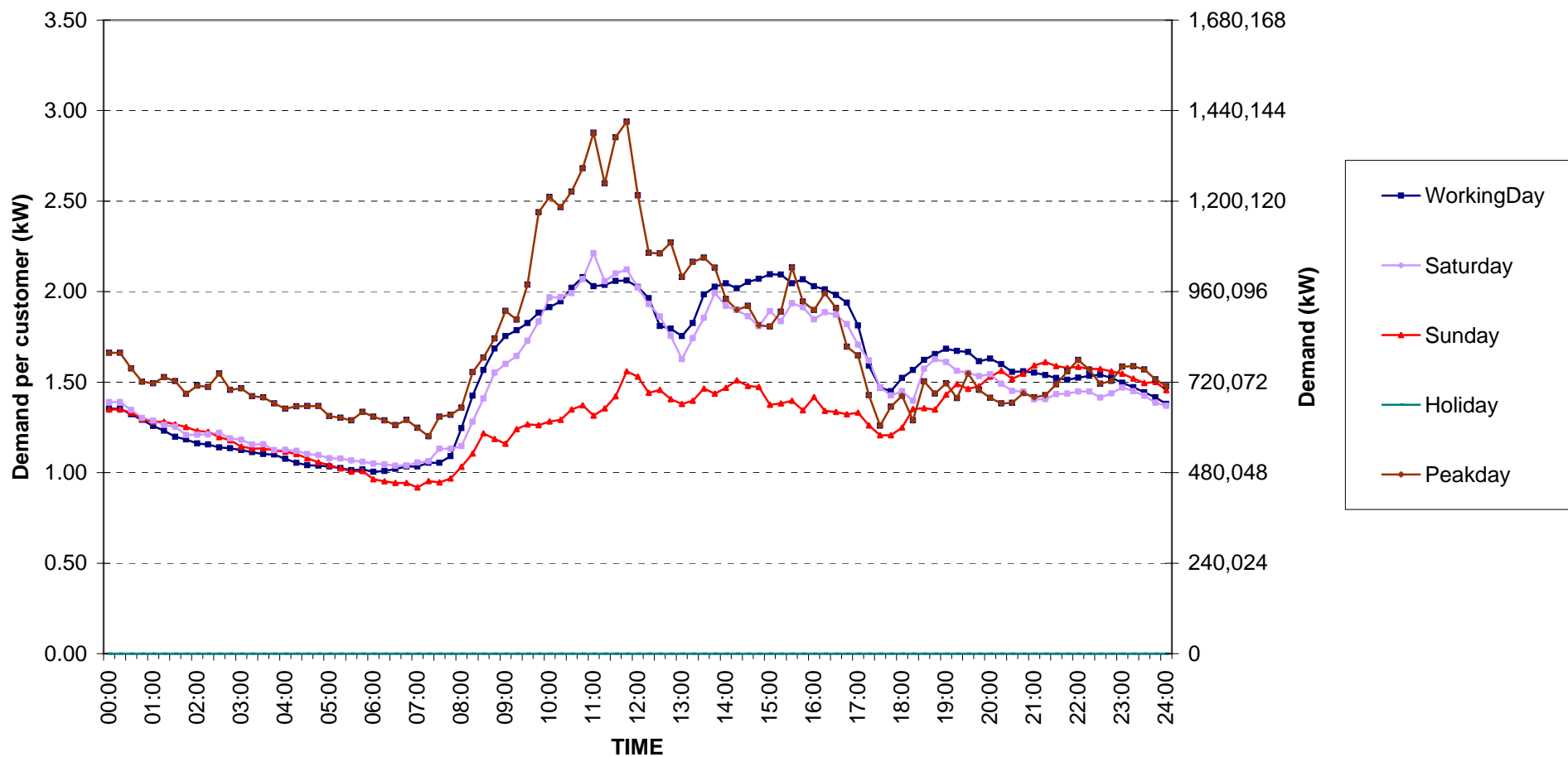
กราฟรูปที่ 3



### Small General Services Load Profile

Date: 1 Nov, 2009 to 30 Nov, 2009

Number of sample customers = 205



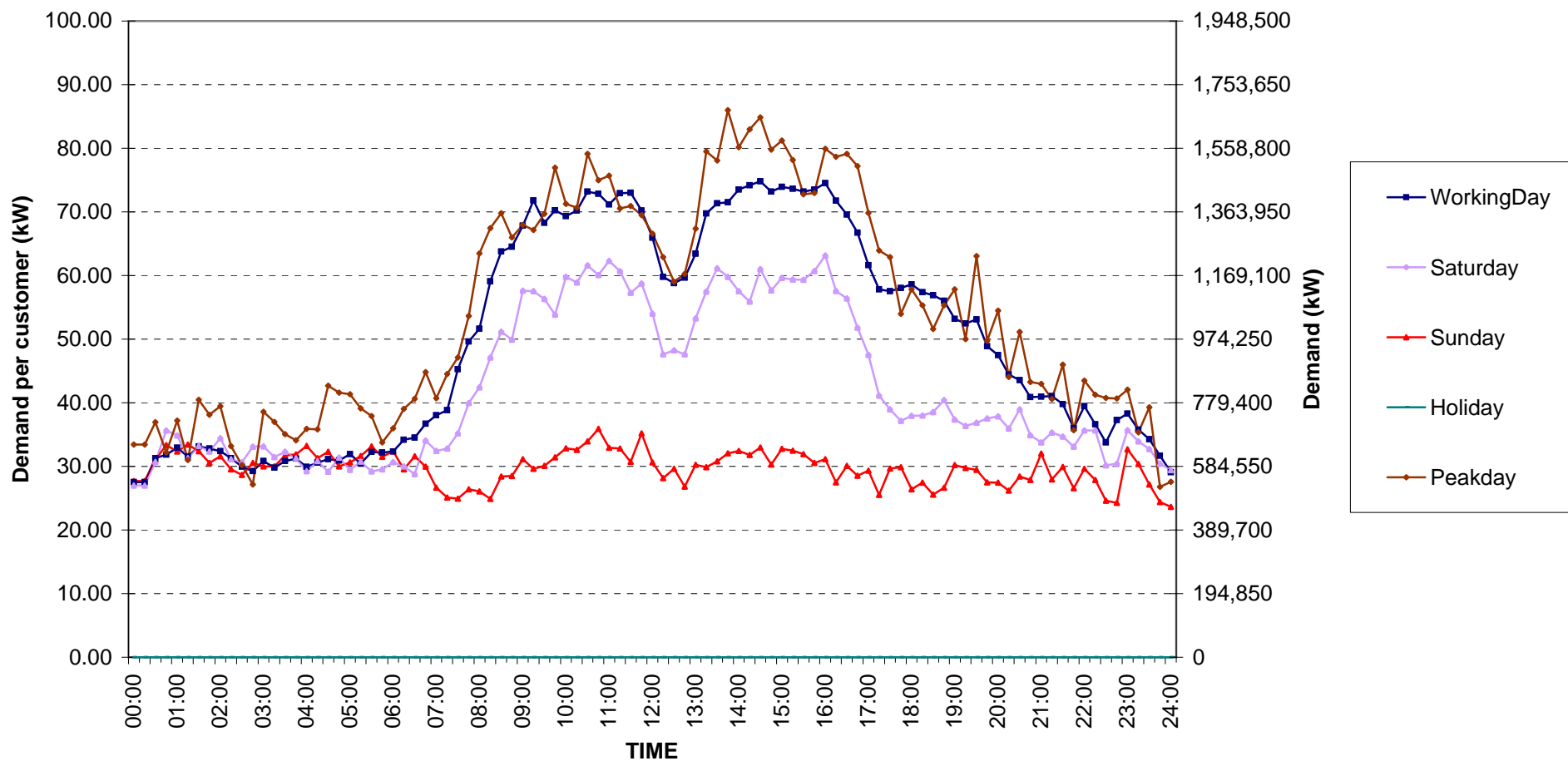
กราฟรูปที่ 4



### Medium General Services Load Profile

Date: 1 Nov, 2009 to 30 Nov, 2009

Number of sample customers = 135



กราฟรูปที่ 5

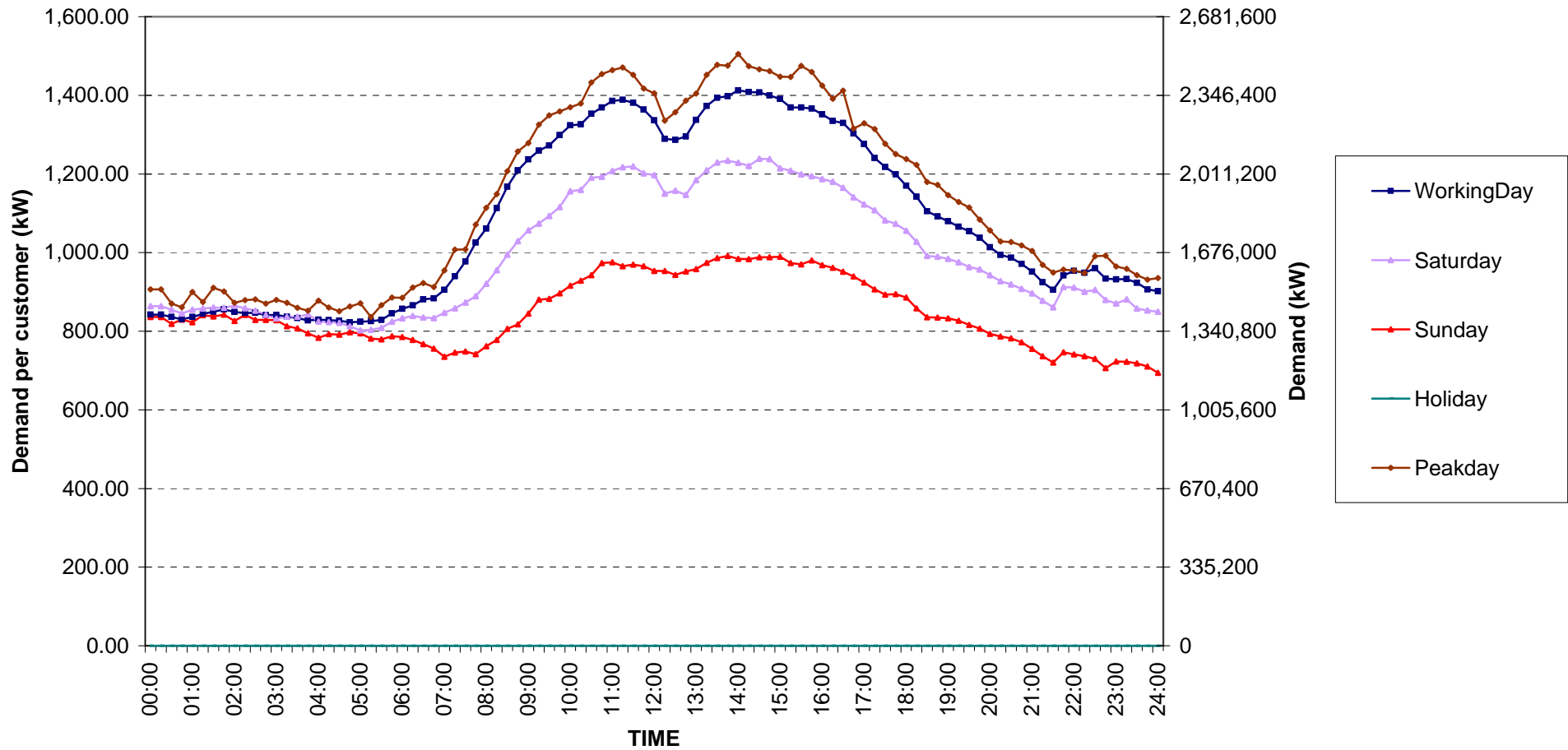




### Large General Services Load Profile

Date: 1 Nov, 2009 to 30 Nov, 2009

Number of sample customers = 284



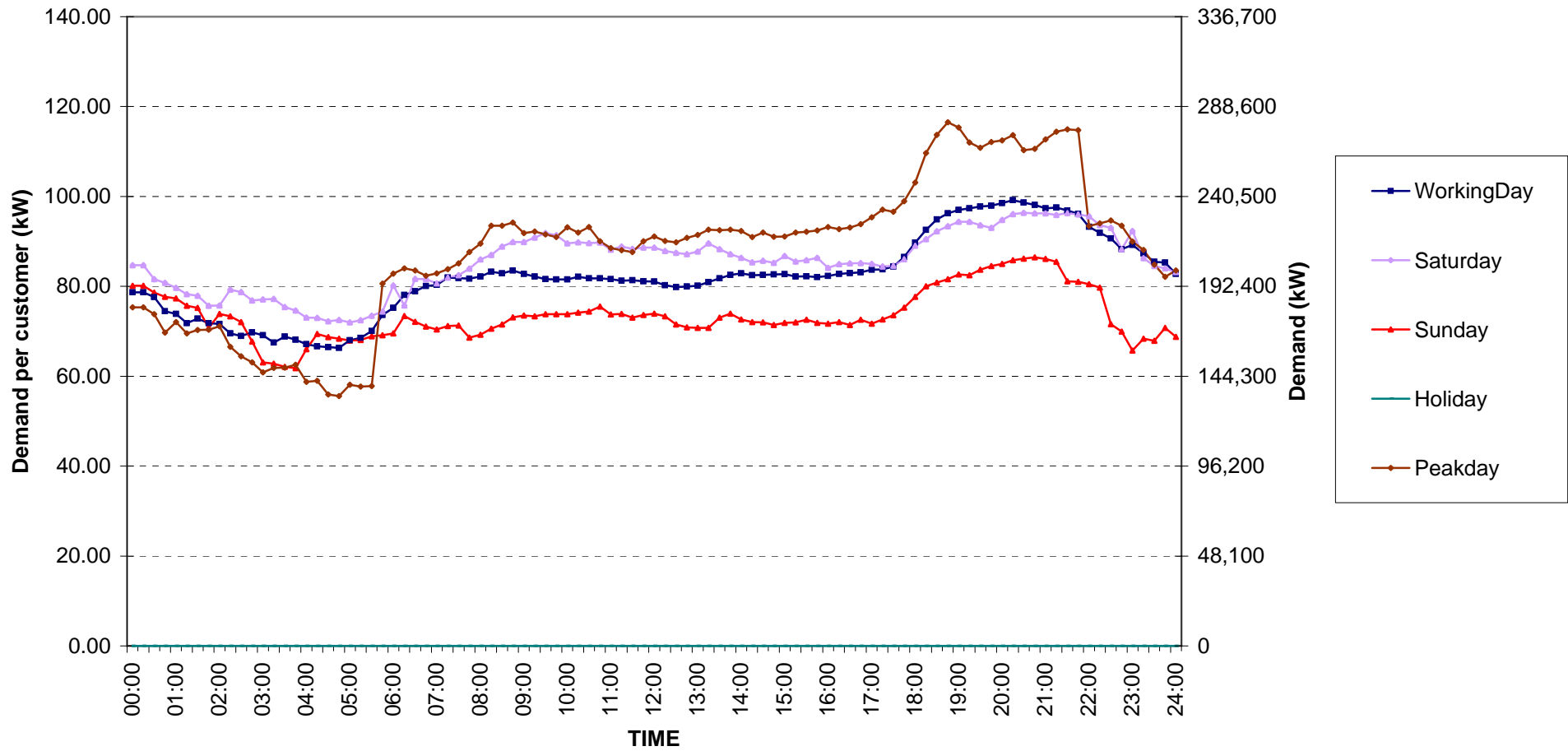
กราฟรูปที่ 6



Specific Business Load Profile

Date: 1 Nov, 2009 to 30 Nov, 2009

Number of sample customers = 74



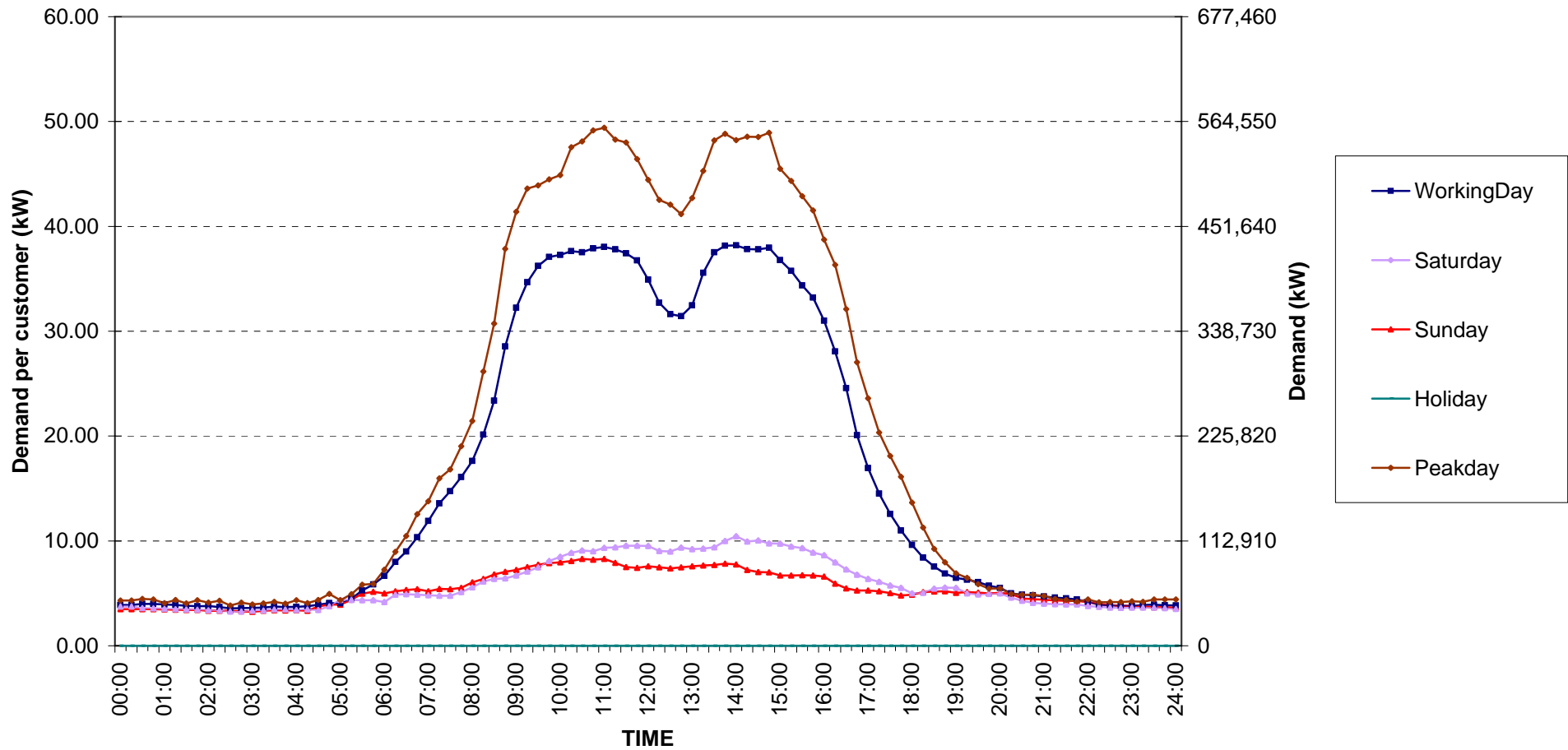
กราฟรูปที่ 7



Government institutions and non-profit organizations Load Profile

Date: 1 Nov, 2009 to 30 Nov, 2009

Number of sample customers = 50



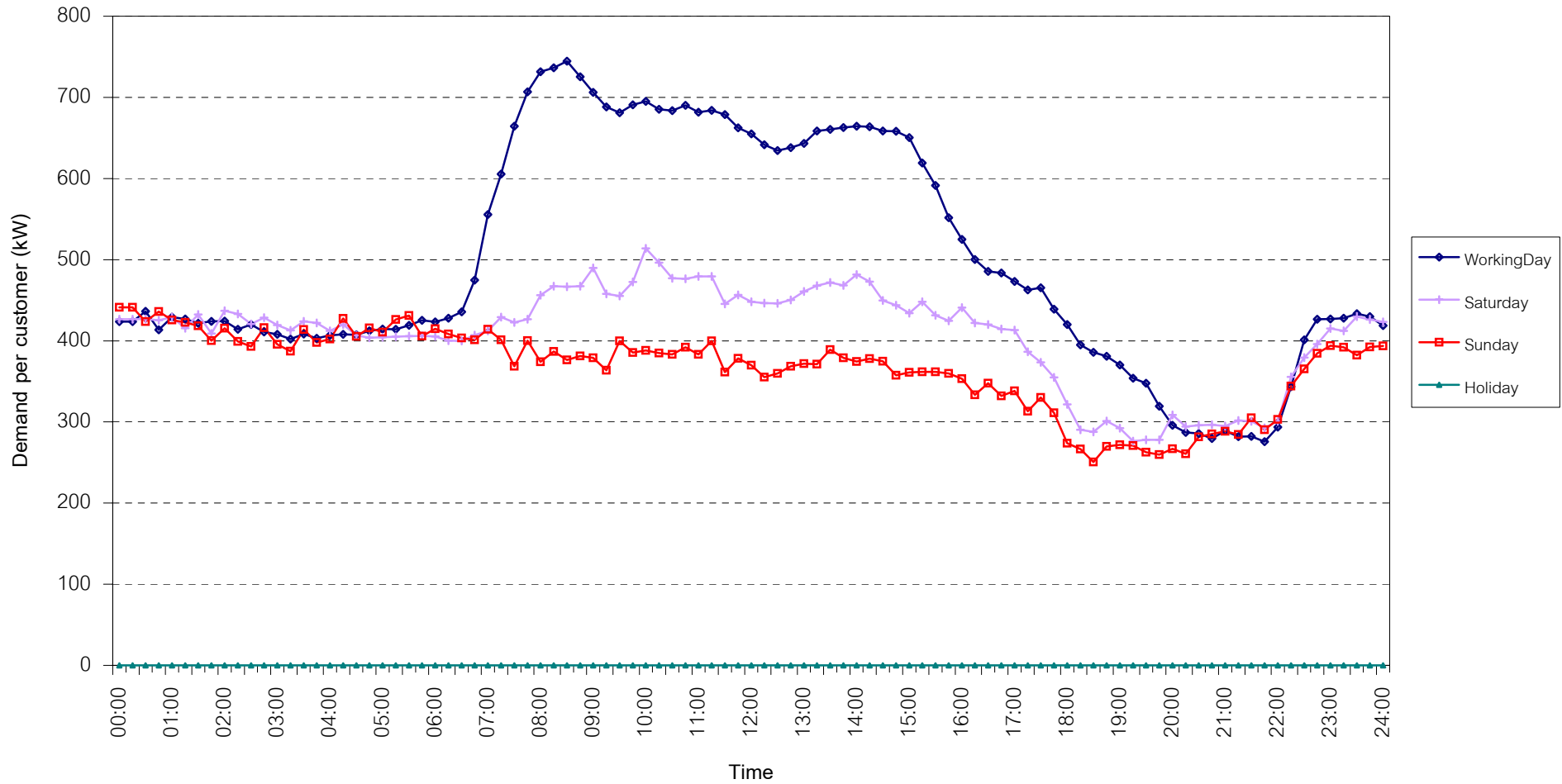
กราฟรูปที่ 8



TSIC 31 (Food Processing) Load Profile

Date: 1 Nov, 2009 to 30 Nov, 2009

Number of sample customers = 30



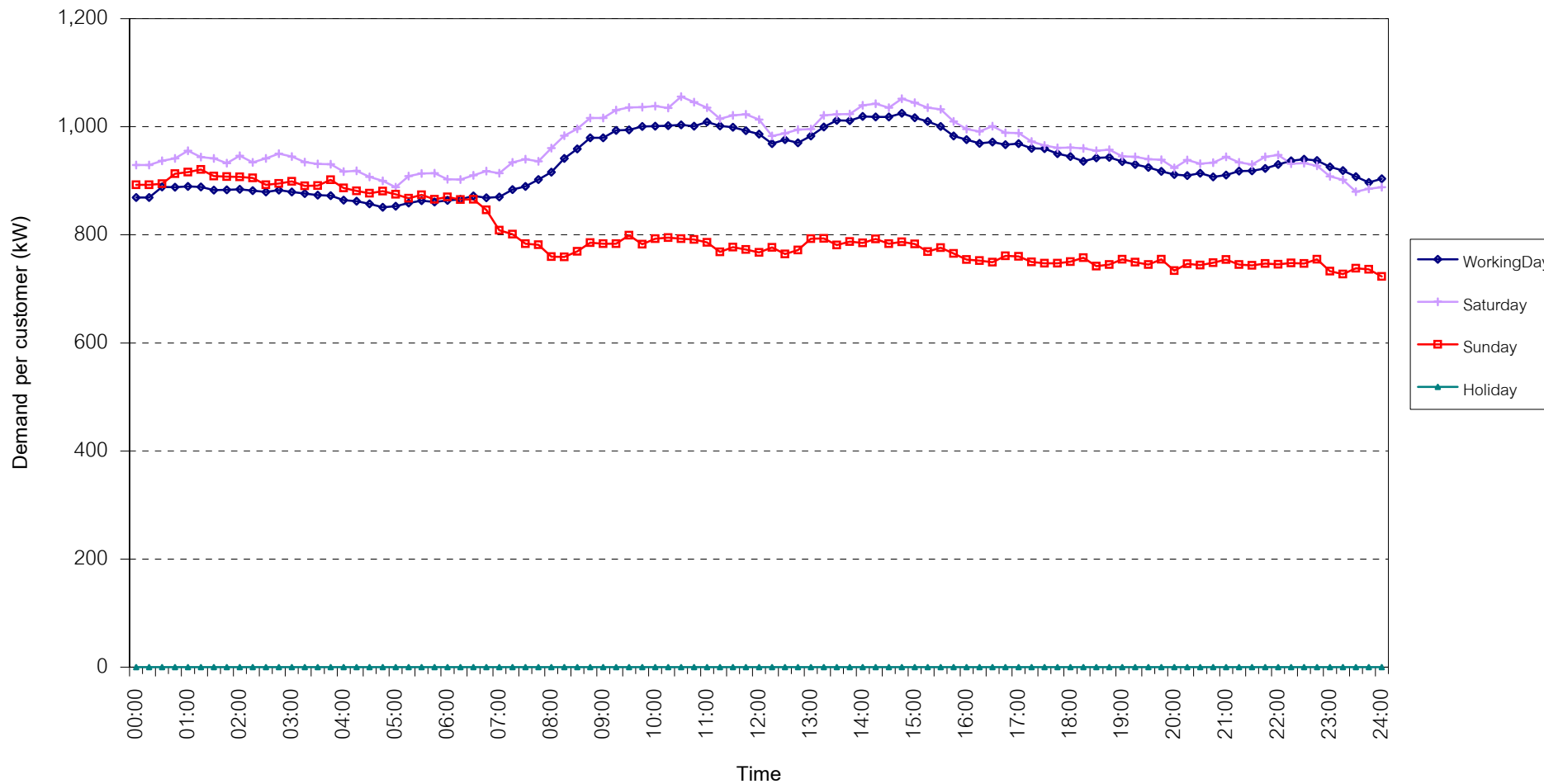
กราฟรูปที่ 9



TSIC 32 (Textiles) Load Profile

Date: 1 Nov, 2009 to 30 Nov, 2009

Number of sample customers = 63



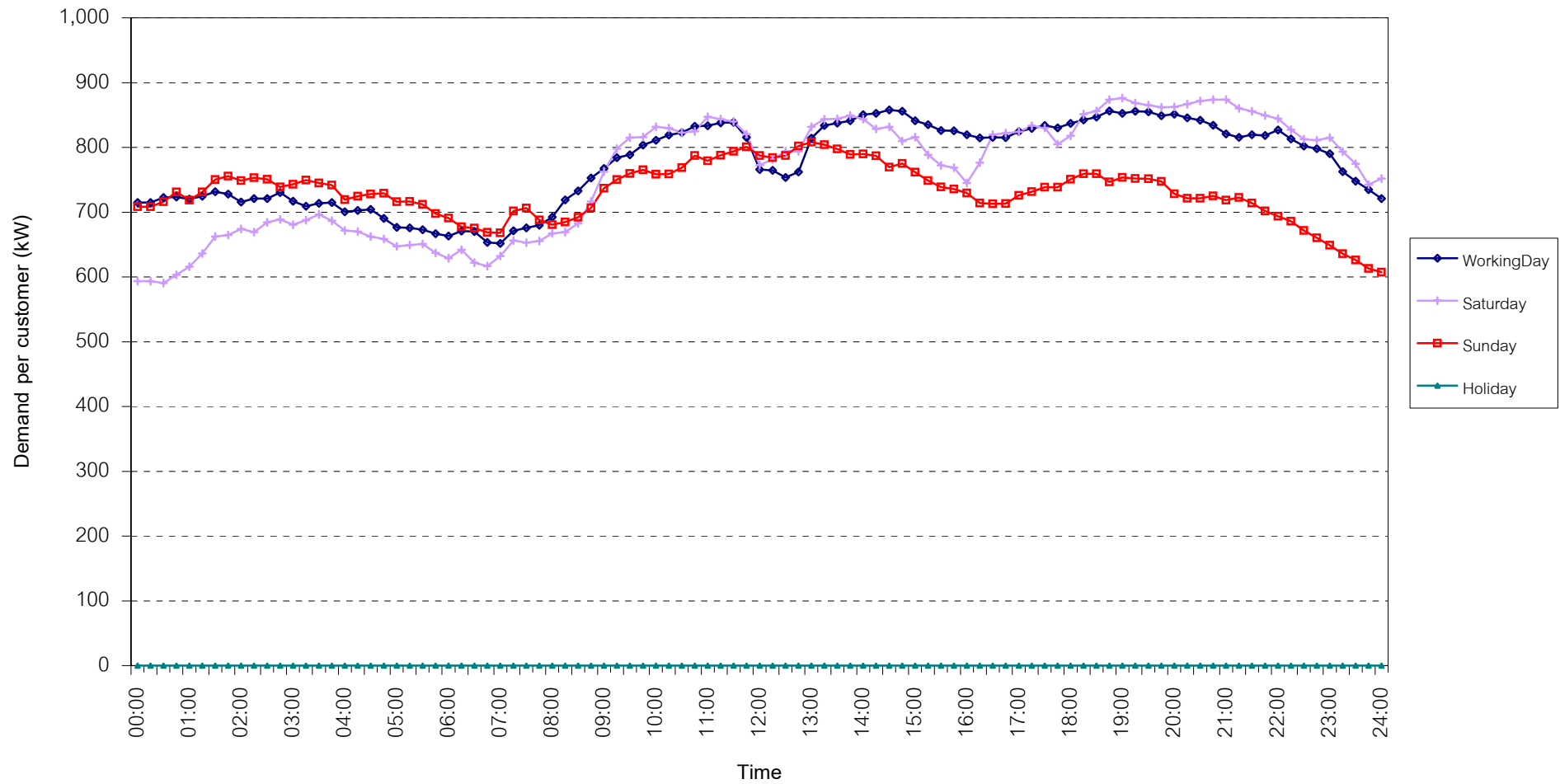
กราฟรูปที่ 10



## TSIC 34 (Paper & Printing) Load Profile

Date: 1 Nov, 2009 to 30 Nov, 2009

Number of sample customers = 12



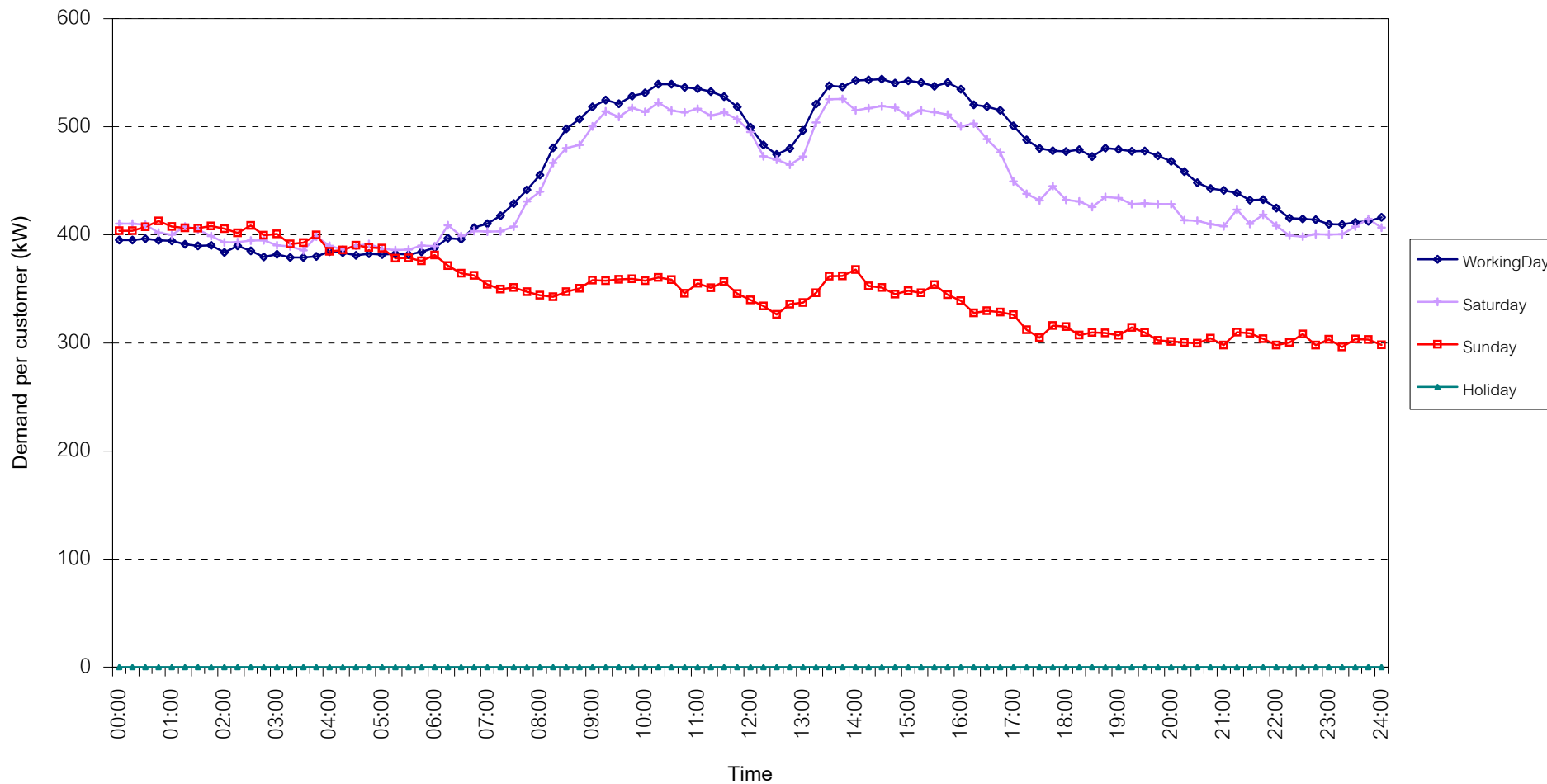
กราฟรูปที่ 11



## TSIC 35 (Chemical & Petroleum) Load Profile

Date: 1 Nov, 2009 to 30 Nov, 2009

Number of sample customers = 72



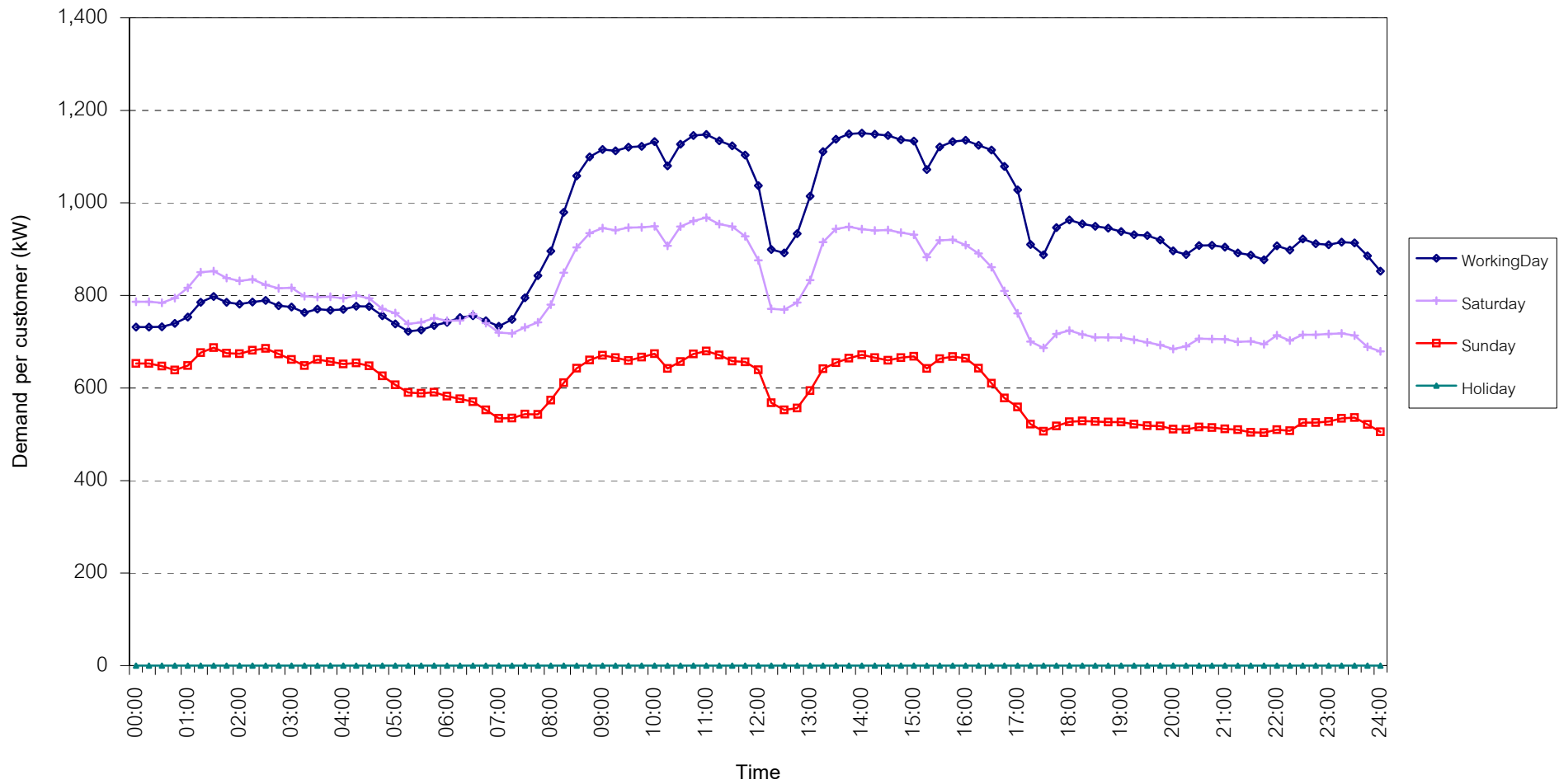
กราฟรูปที่ 12



TSIC 38 (Fabricated Metal Products) Load Profile

Date: 1 Nov, 2009 to 30 Nov, 2009

Number of sample customers = 62



กราฟรูปที่ 13

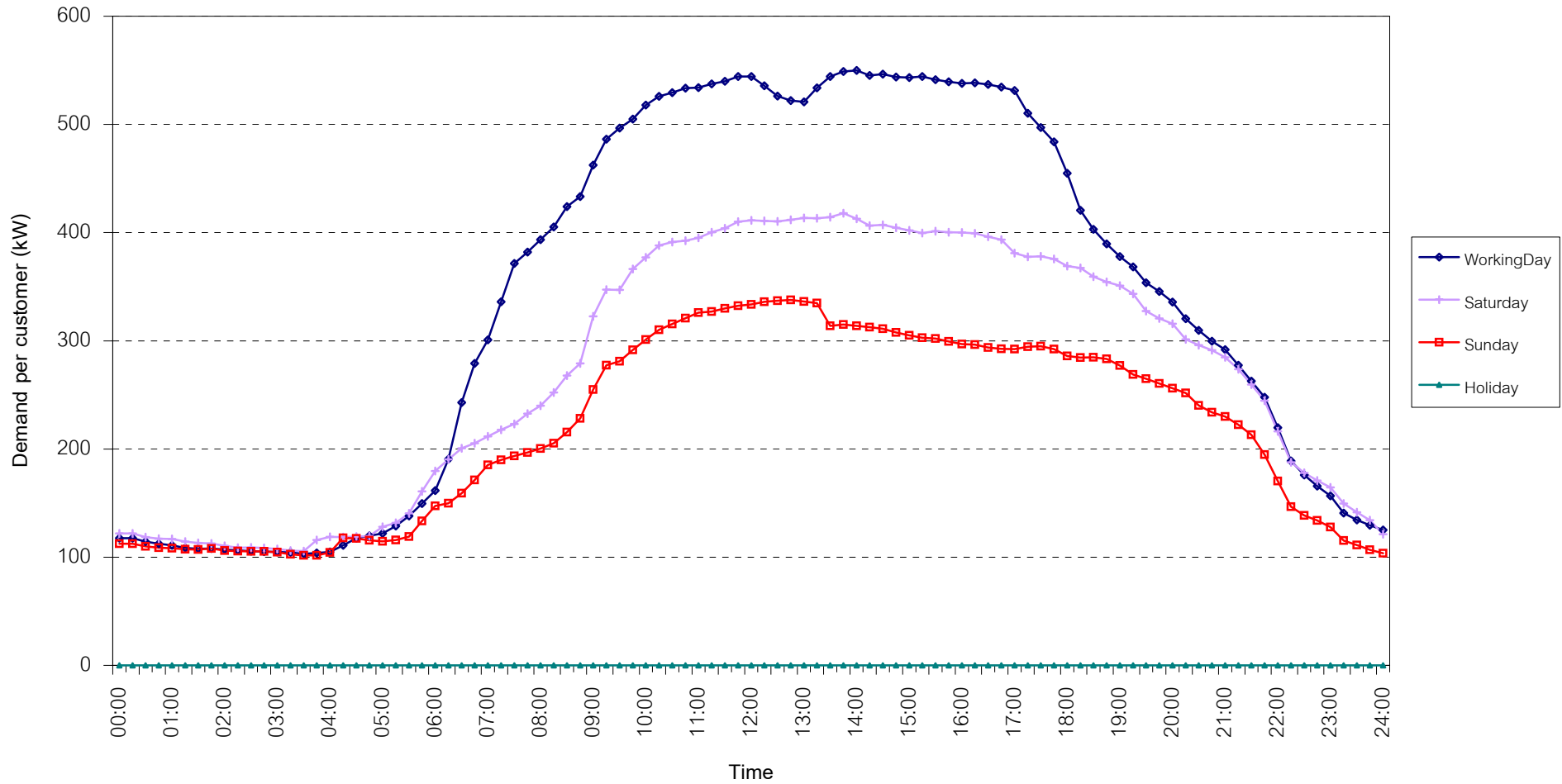




TSIC 61 (Wholesale Trade) Load Profile

Date: 1 Nov, 2009 to 30 Nov, 2009

Number of sample customers = 36



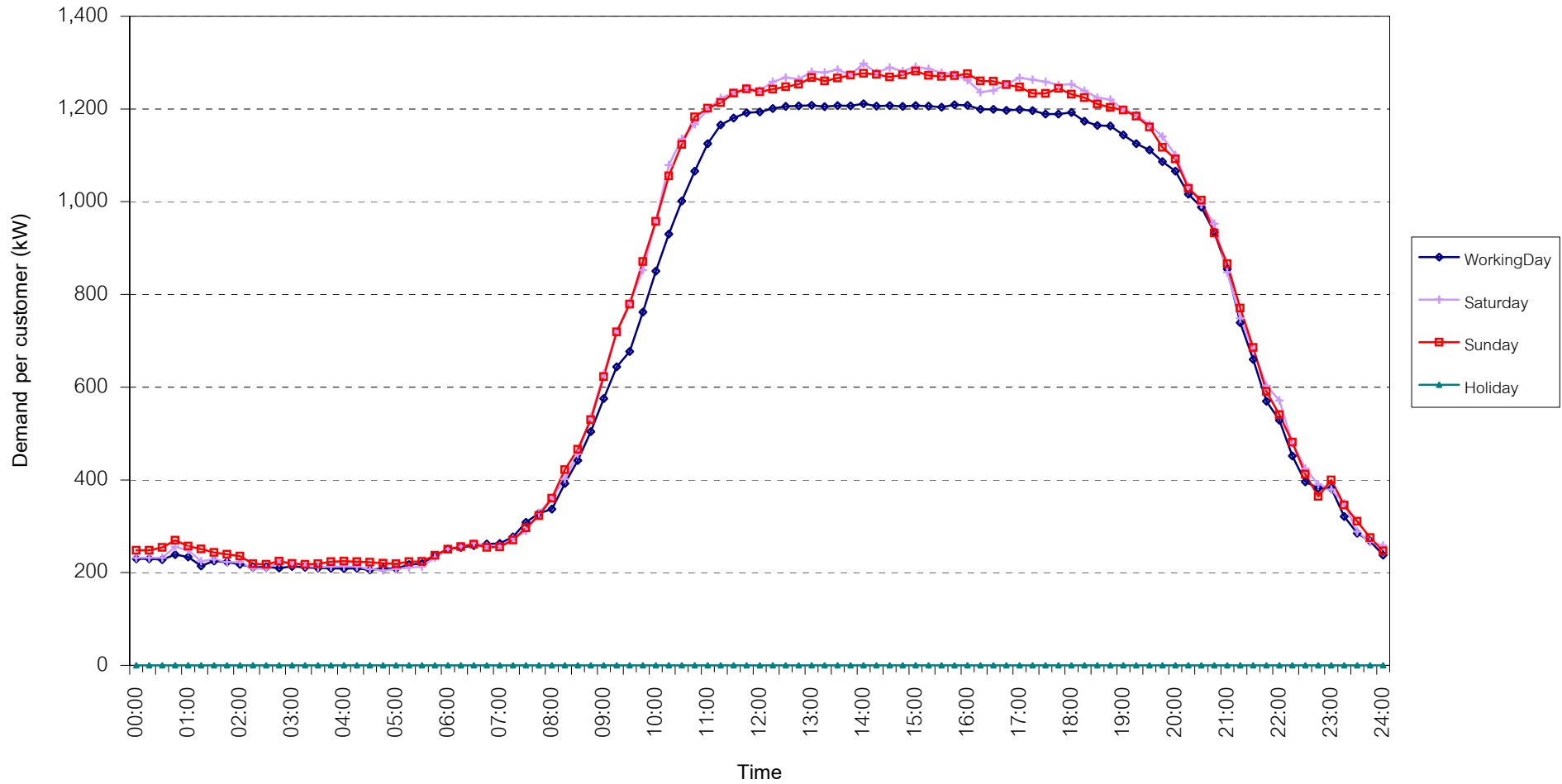
กราฟรูปที่ 14



## TSIC 62 (Retail Trade) Load Profile

Date: 1 Nov, 2009 to 30 Nov, 2009

Number of sample customers = 87



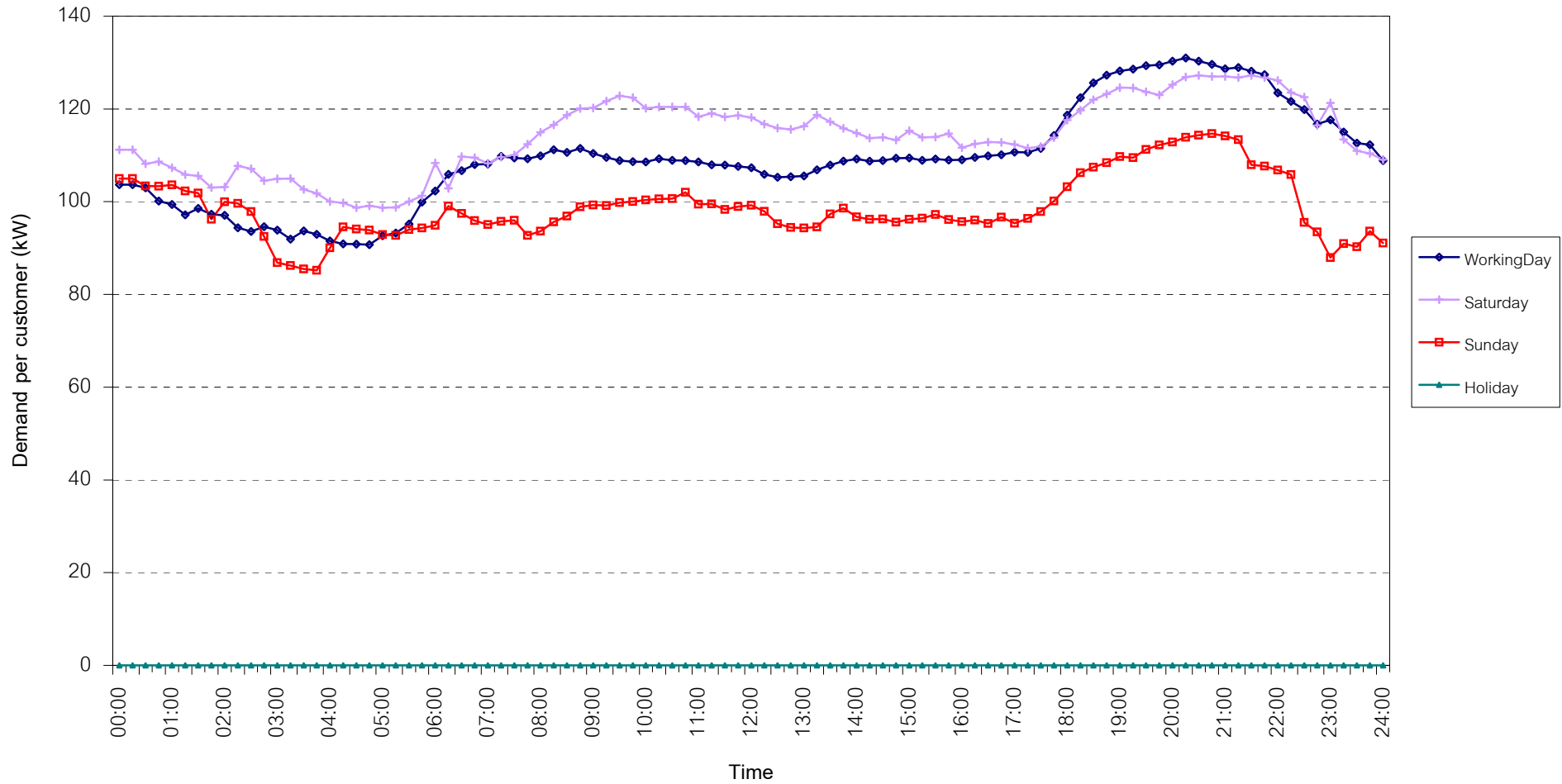
กราฟรูปที่ 15



## TSIC 63 (Hotels and restaurants) Load Profile

Date: 1 Nov, 2009 to 30 Nov, 2009

Number of sample customers = 107



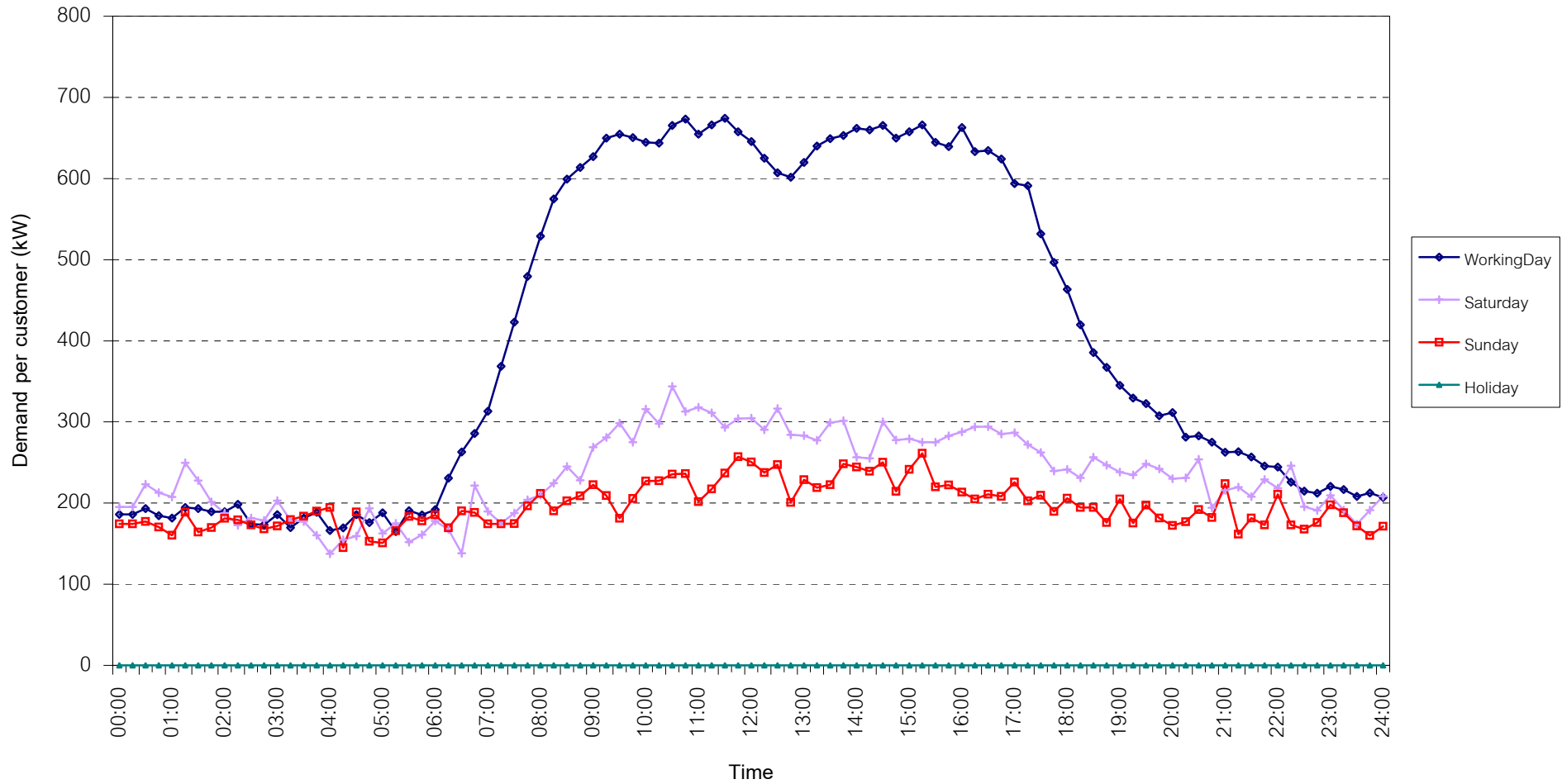
กราฟรูปที่ 16



## TSIC 83 (Real Estate) Load Profile

Date: 1 Nov, 2009 to 30 Nov, 2009

Number of sample customers = 40



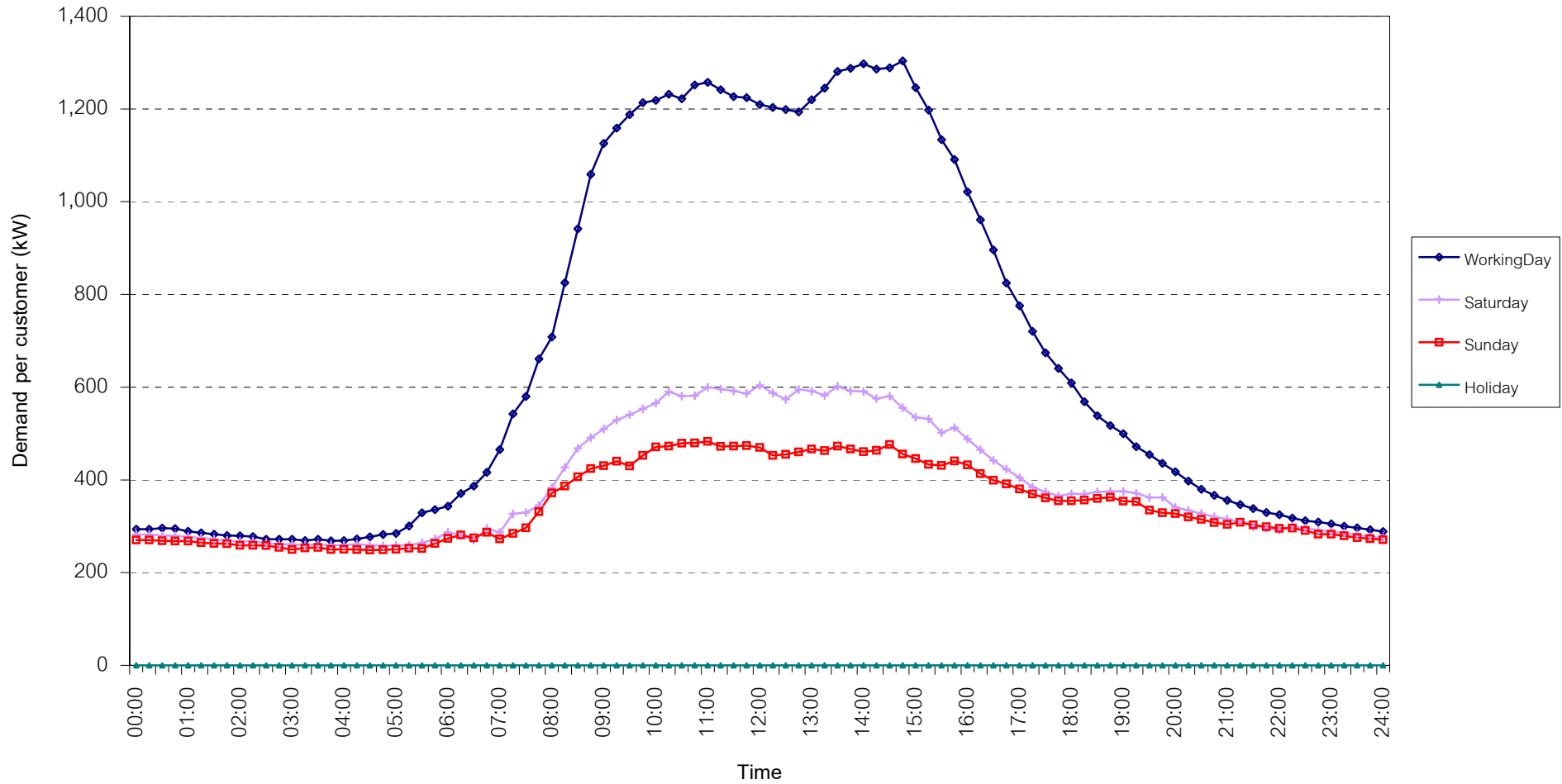
กราฟรูปที่ 17



## TSIC 93 (Social Services) Load Profile

Date: 1 Nov, 2009 to 30 Nov, 2009

Number of sample customers = 25

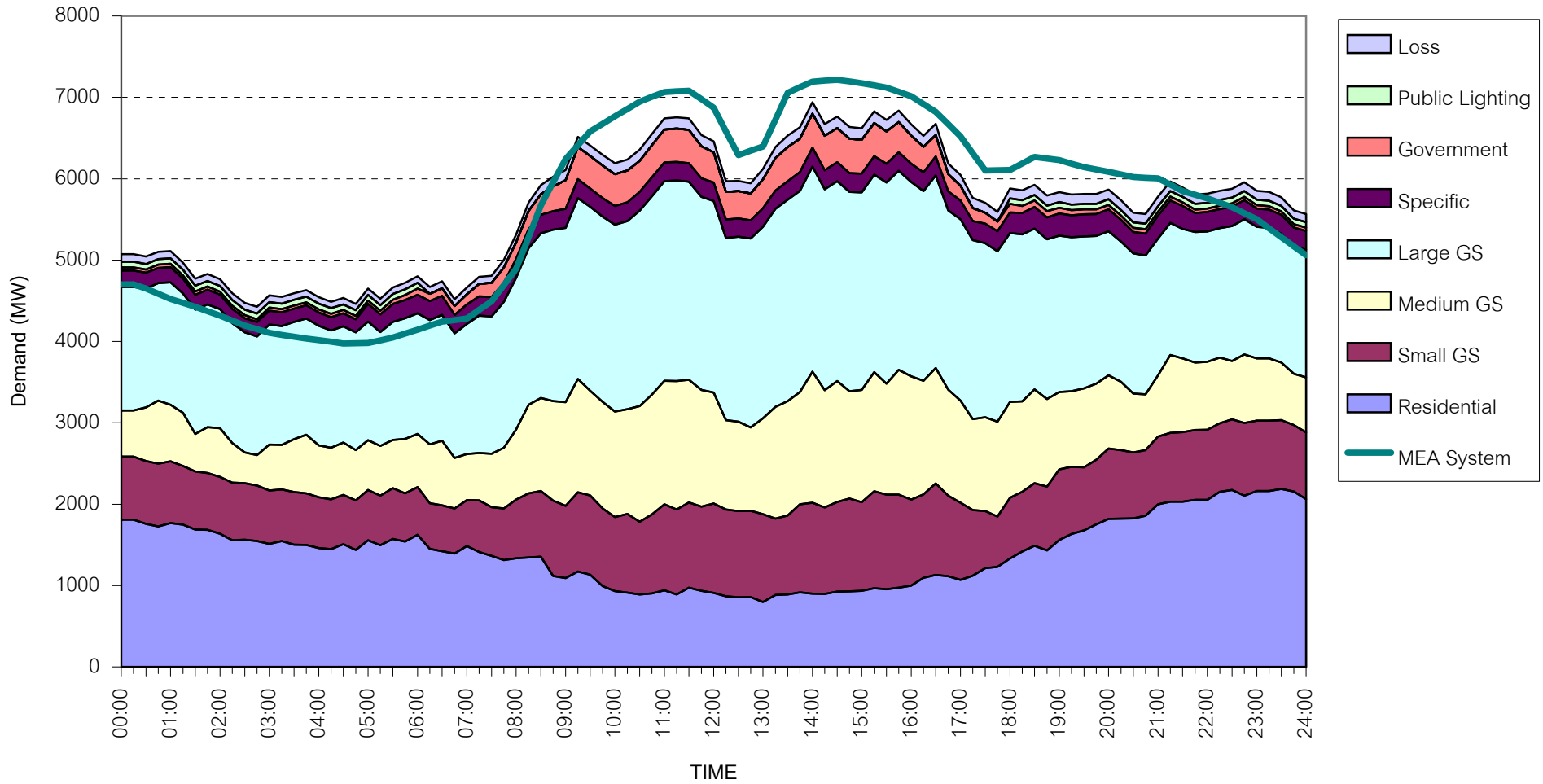


กราฟรูปที่ 18



MEA's System Load Profile

Peak Day 17 Nov, 2009 at 14:30



กราฟรูปที่ 19