



# ข้อมูลการศึกษาลักษณะการใช้ไฟฟ้า

เดือน มิถุนายน 2552



Table 1-1

COINCIDENT WITH LOAD RESEARCH SYSTEM'S PEAK ON June 25,2009 time 10:45 7,196.69 MW  
( MEA SYSTEM'S PEAK ON June 25,2009 time 14:30 7,182.94 MW )

CLASS	Number of Customers	Kilowatt hours	Coincident Peak (MEA System Peak at time 14:30)		Coincident Peak (Load Research System Peak at time 10:45)		Sector Diversified Demand		
			MW	Contribution (%)	MW	Contribution (%)	Max MW.	Date	Time
Residential	2,338,786	849,776,665	812.07	11.42	1,027.55	14.28	2,339.65	25 Jun 09	22:30
Small General Service	475,364	549,111,806	1,336.83	18.81	1,341.99	18.65	1,441.11	24 Jun 09	10:15
Medium General Service	19,692	663,205,070	1,527.84	21.49	1,469.47	20.42	2,147.44	9 Jun 09	14:00
Large General Service	1,667	1,245,418,807	2,490.87	35.04	2,404.24	33.41	2,549.18	25 Jun 09	14:45
Specific Business	2,401	151,881,985	241.11	3.39	260.81	3.62	288.37	25 Jun 09	21:00
Government and non Profit organization	11,140	116,474,417	397.88	5.60	402.24	5.59	540.58	15 Jun 09	10:00
Public Lighting	4,175	21,999,150	0.00	0.00	0.00	0.00	59.40	-	-
Loss	-	162,931,597	302.13	4.25	290.39	4.04	289.57	25 Jun 09	14:30
TOTAL	2,853,225	3,760,799,497	7,108.74	100	7,196.69	100	7,196.69	25 Jun 09	10:45



Table 1-2

Number of sample customers on June, 2009

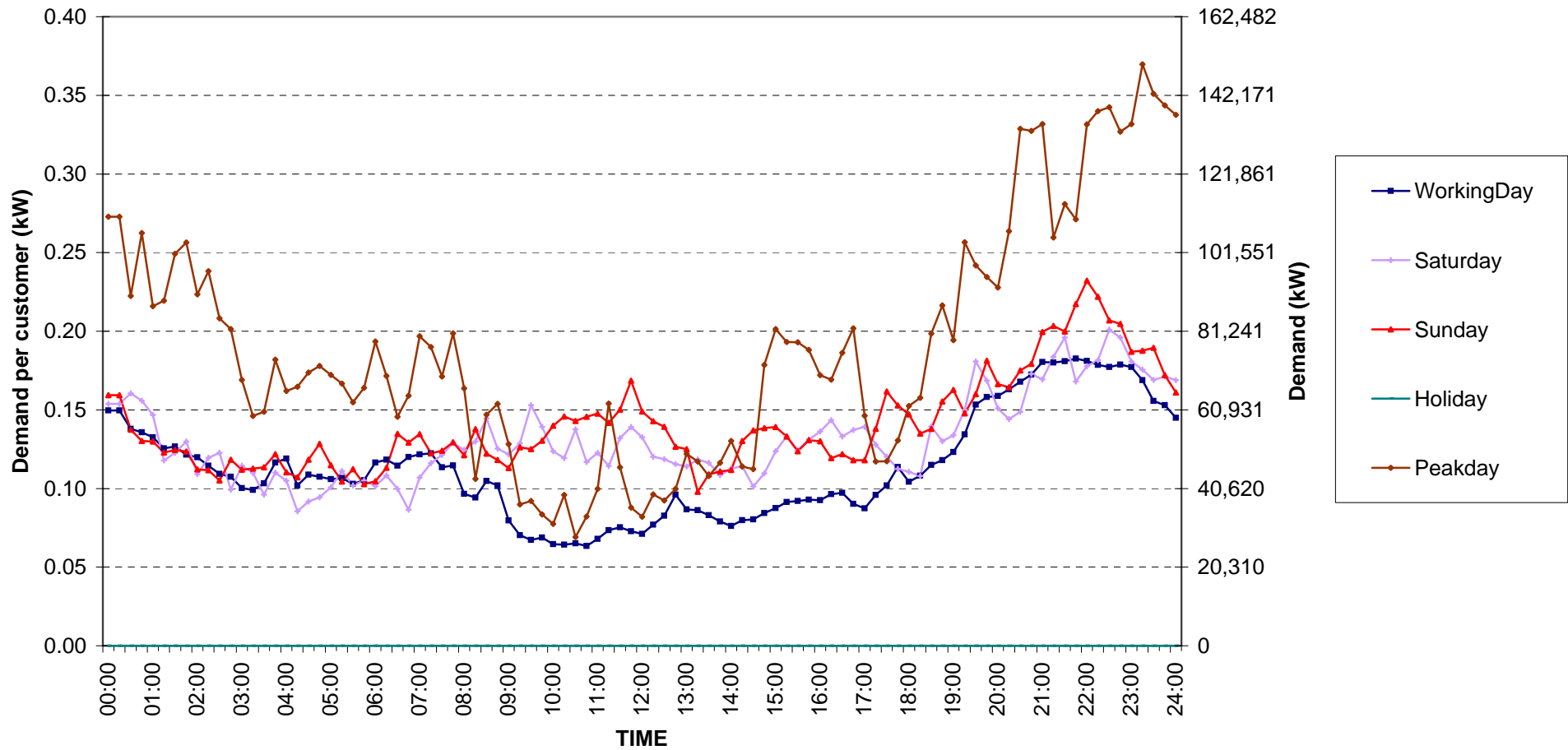
CLASS	Number of sample customers (Target)	Number of sample customers (Collected)
Residential	154	154
Small General Service	205	205
Medium General Service	135	135
Large General Service	284	284
Specific Business	74	74
Government and Non-profit Organization	50	50
TOTAL	902	902



## Residential ( Energy Consumption less than 150 kWh per month )

Date: 1 Jun, 2009 to 30 Jun, 2009

Number of sample customers = 52



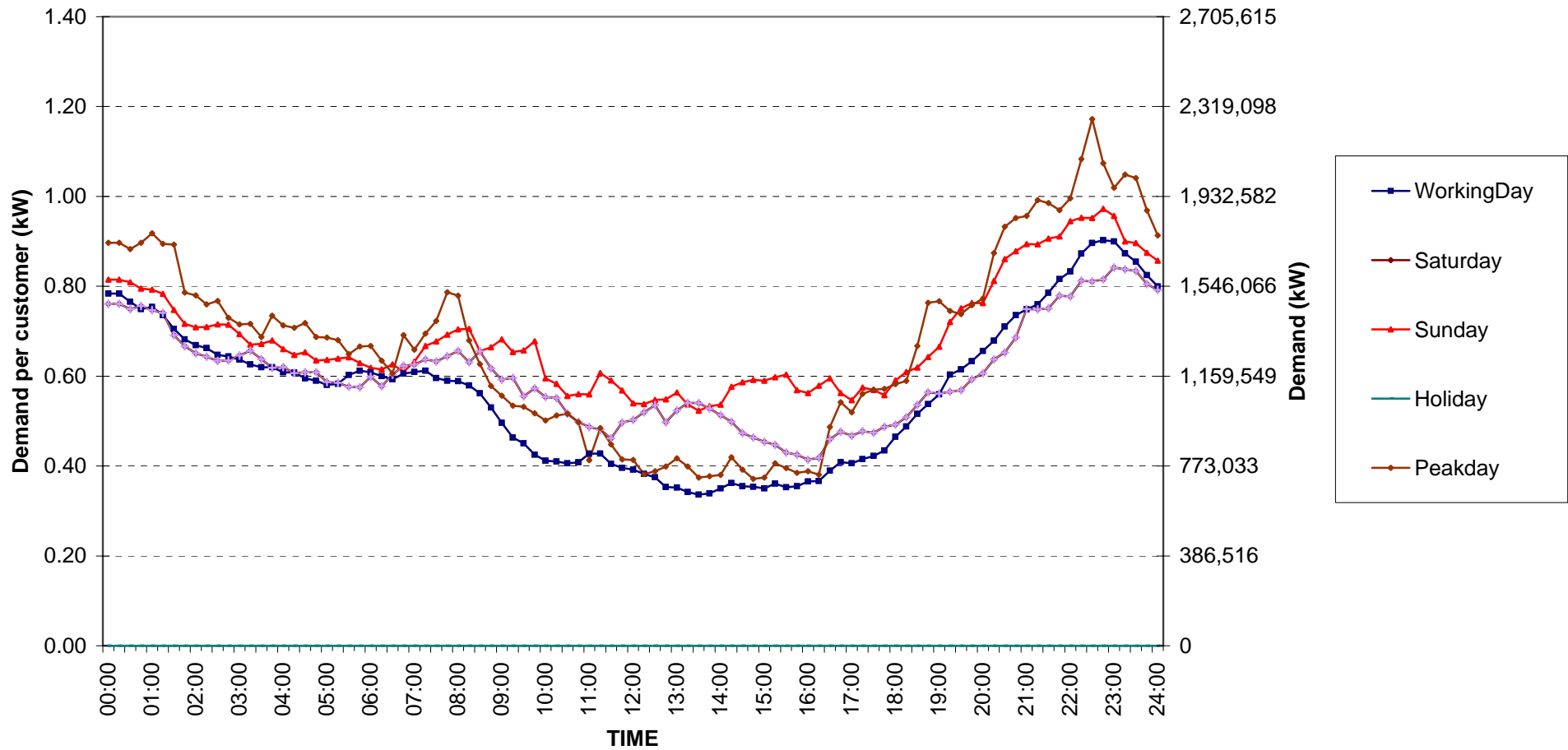
กราฟรูปที่ 1



## Residential ( Energy Consumption more than 150 kWh per month )

Date: 1 Jun, 2009 to 30 Jun, 2009

Number of sample customers = 102



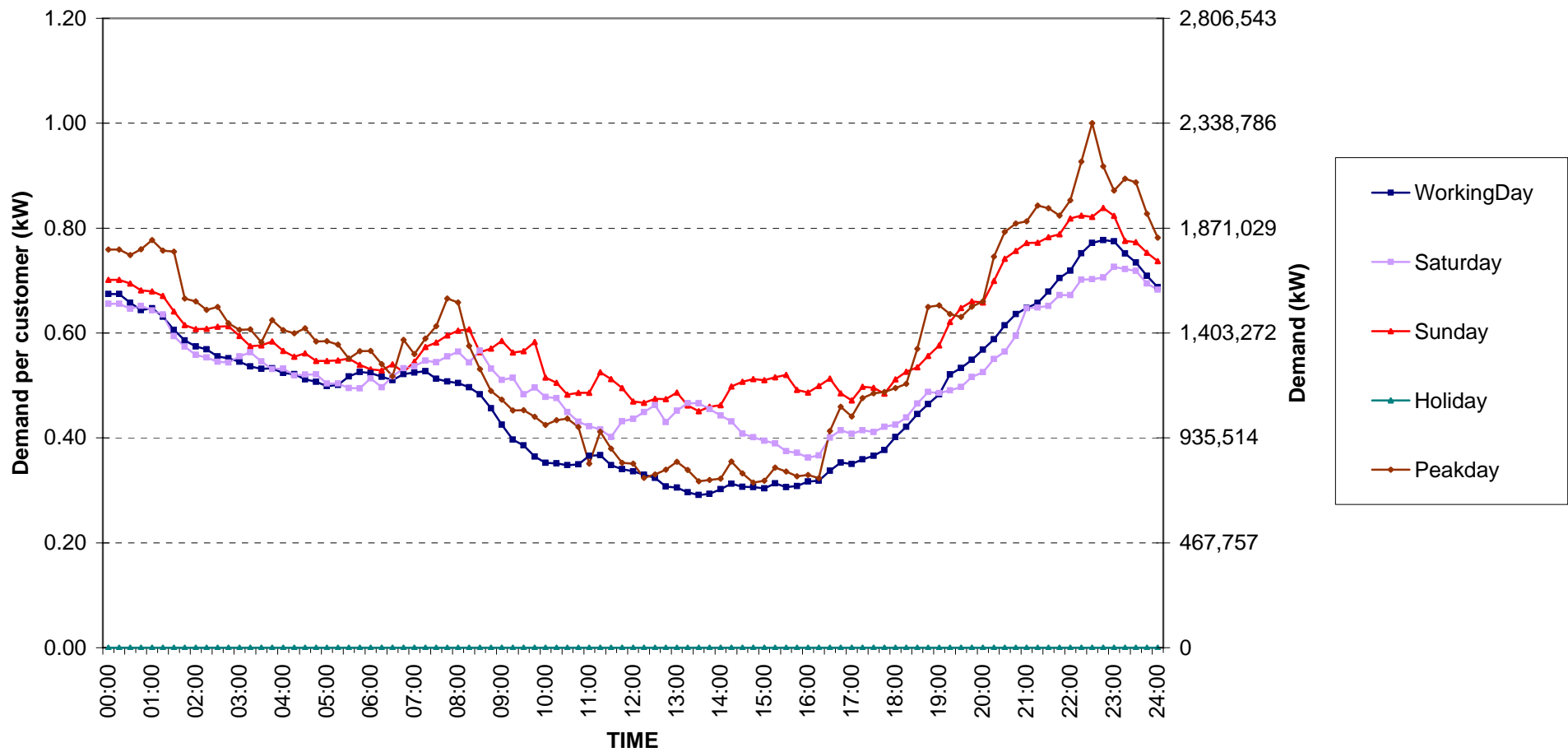
กราฟรูปที่ 2



## Residential Load Profile

Date: 1 Jun, 2009 to 30 Jun, 2009

Number of sample customers = 154



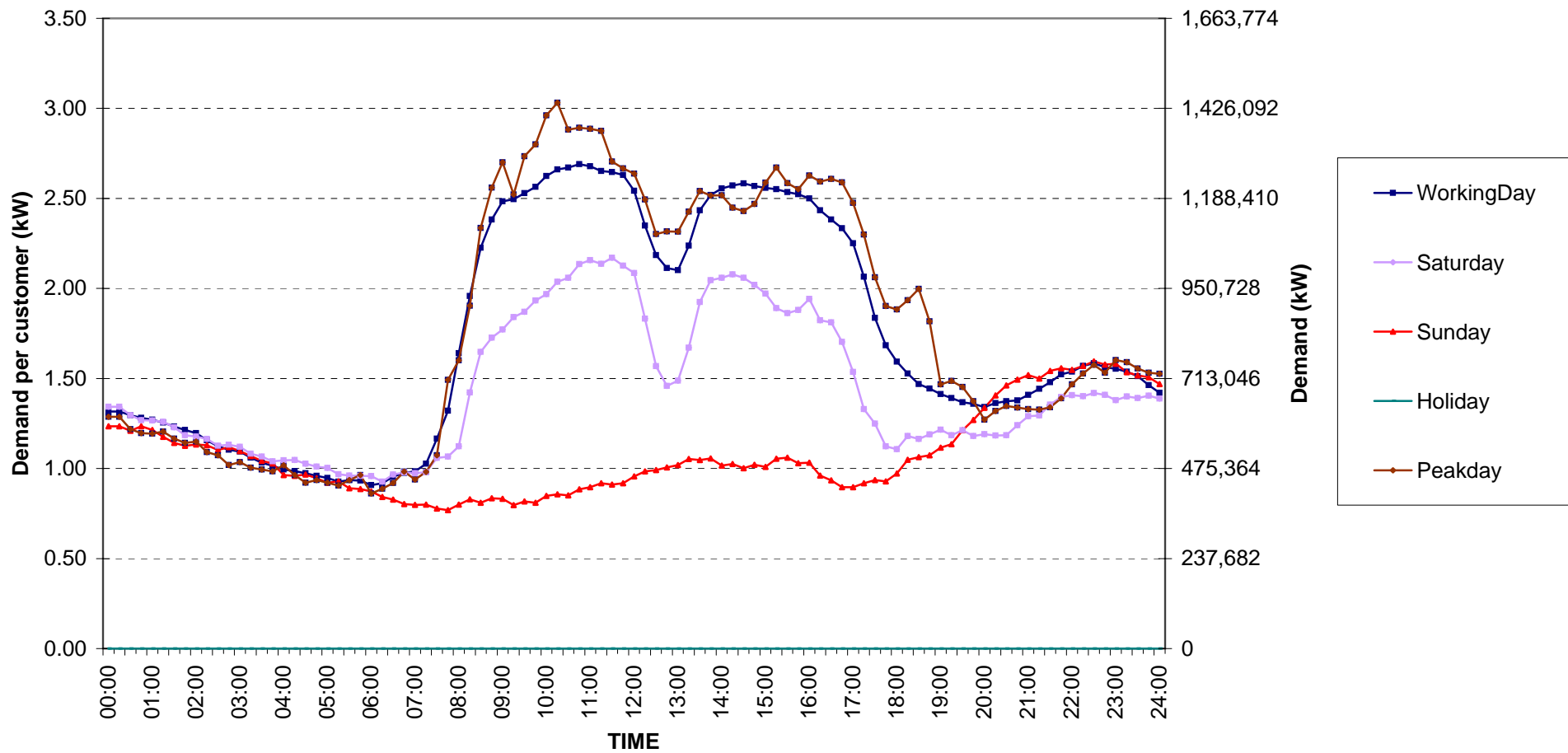
กราฟรูปที่ 3



Small General Services Load Profile

Date: 1 Jun, 2009 to 30 Jun, 2009

Number of sample customers = 205



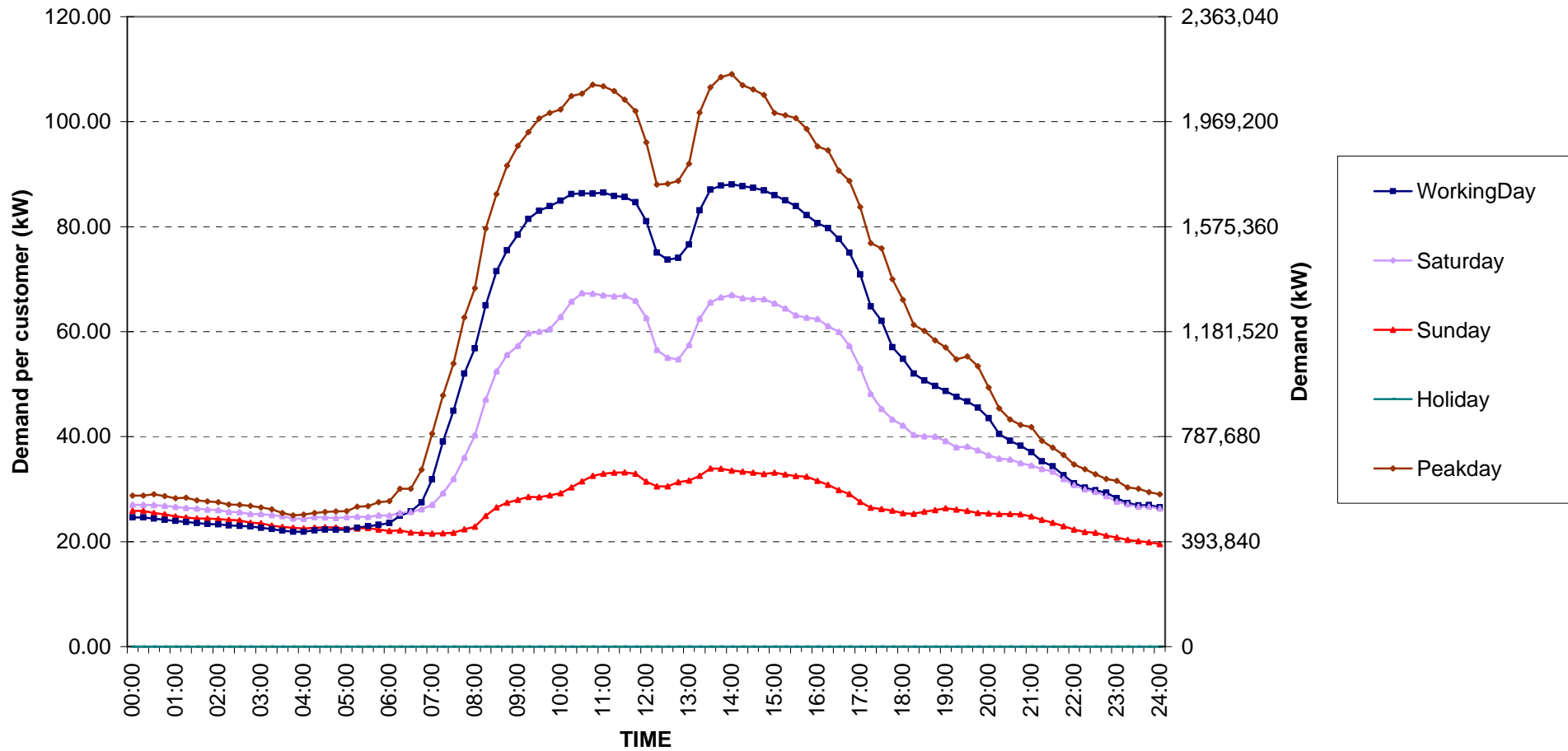
กราฟรูปที่ 4



## Medium General Services Load Profile

Date: 1 Jun, 2009 to 30 Jun, 2009

Number of sample customers = 135



กราฟรูปที่ 5

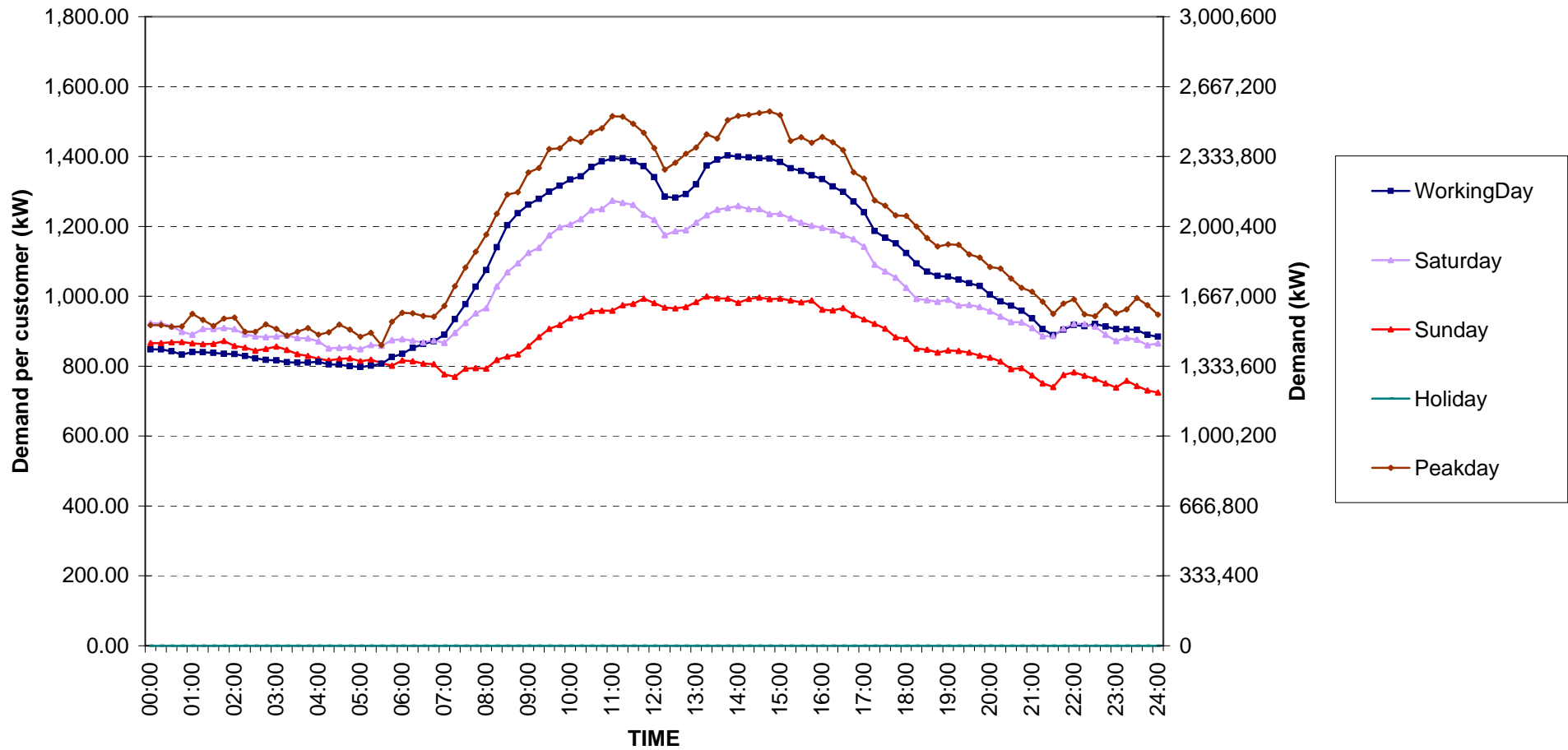




### Large General Services Load Profile

Date: 1 Jun, 2009 to 30 Jun, 2009

Number of sample customers = 284



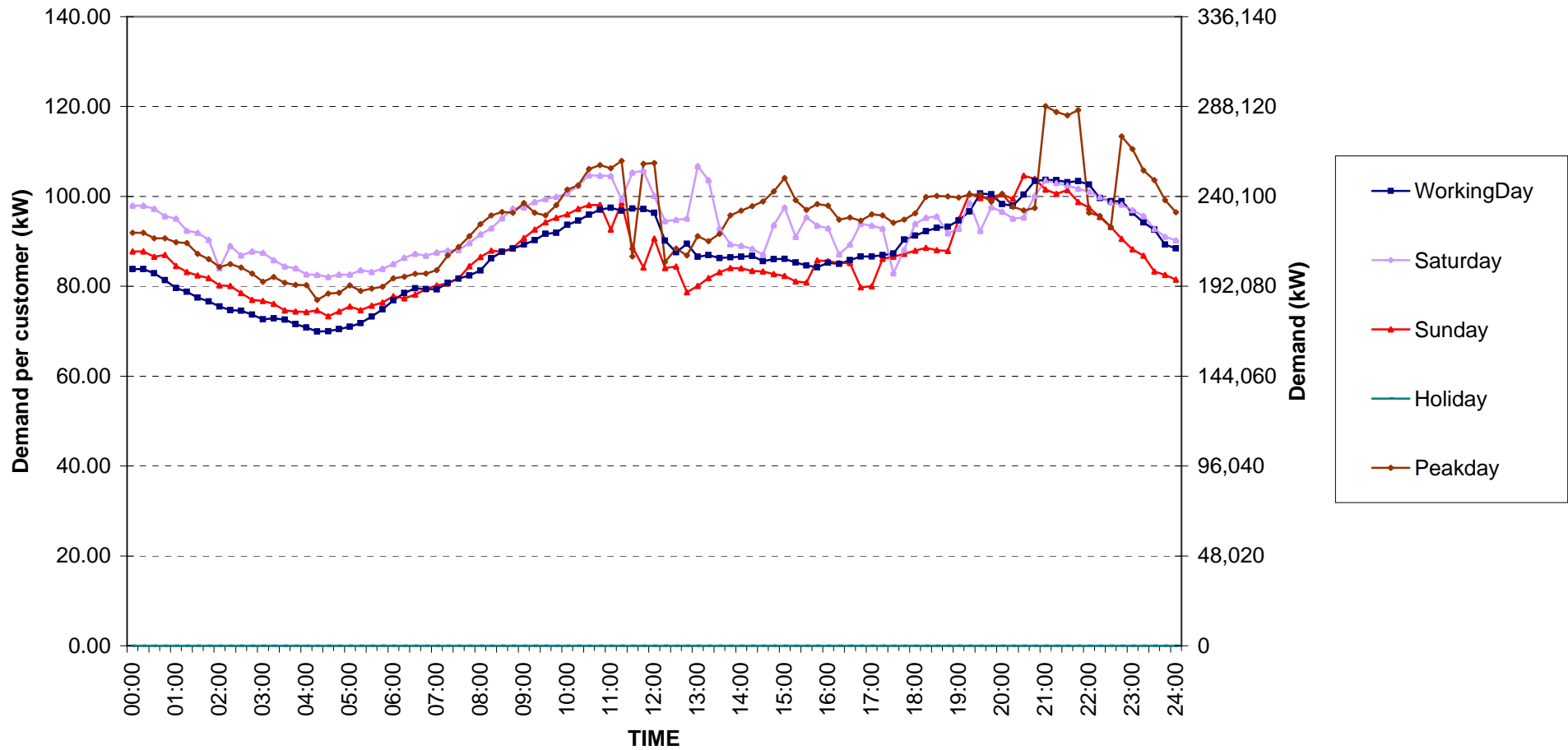
กราฟรูปที่ 6



## Specific Business Load Profile

Date: 1 Jun, 2009 to 30 Jun, 2009

Number of sample customers = 74



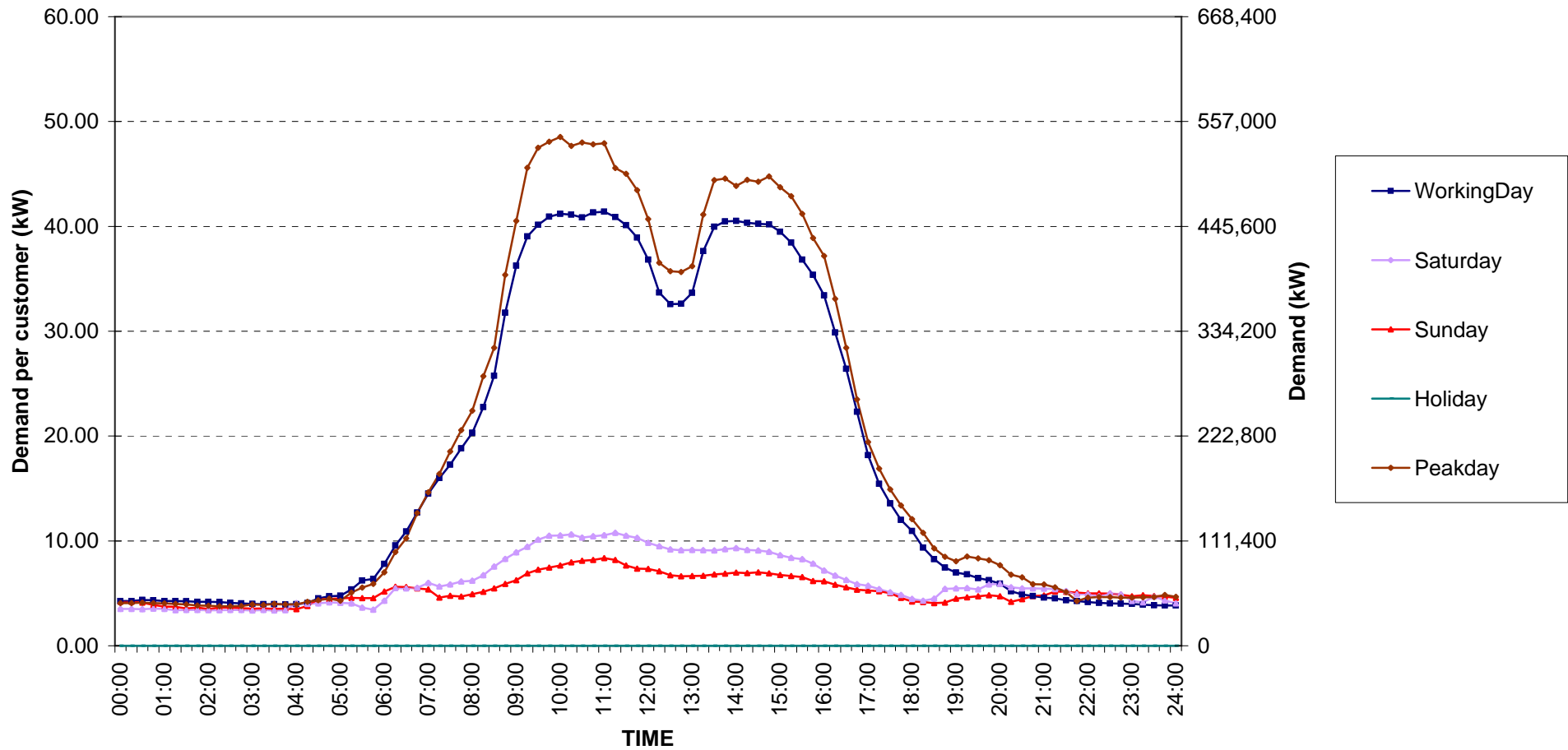
กราฟรูปที่ 7



Government institutions and non-profit organizations Load Profile

Date: 1 Jun, 2009 to 30 Jun, 2009

Number of sample customers = 50



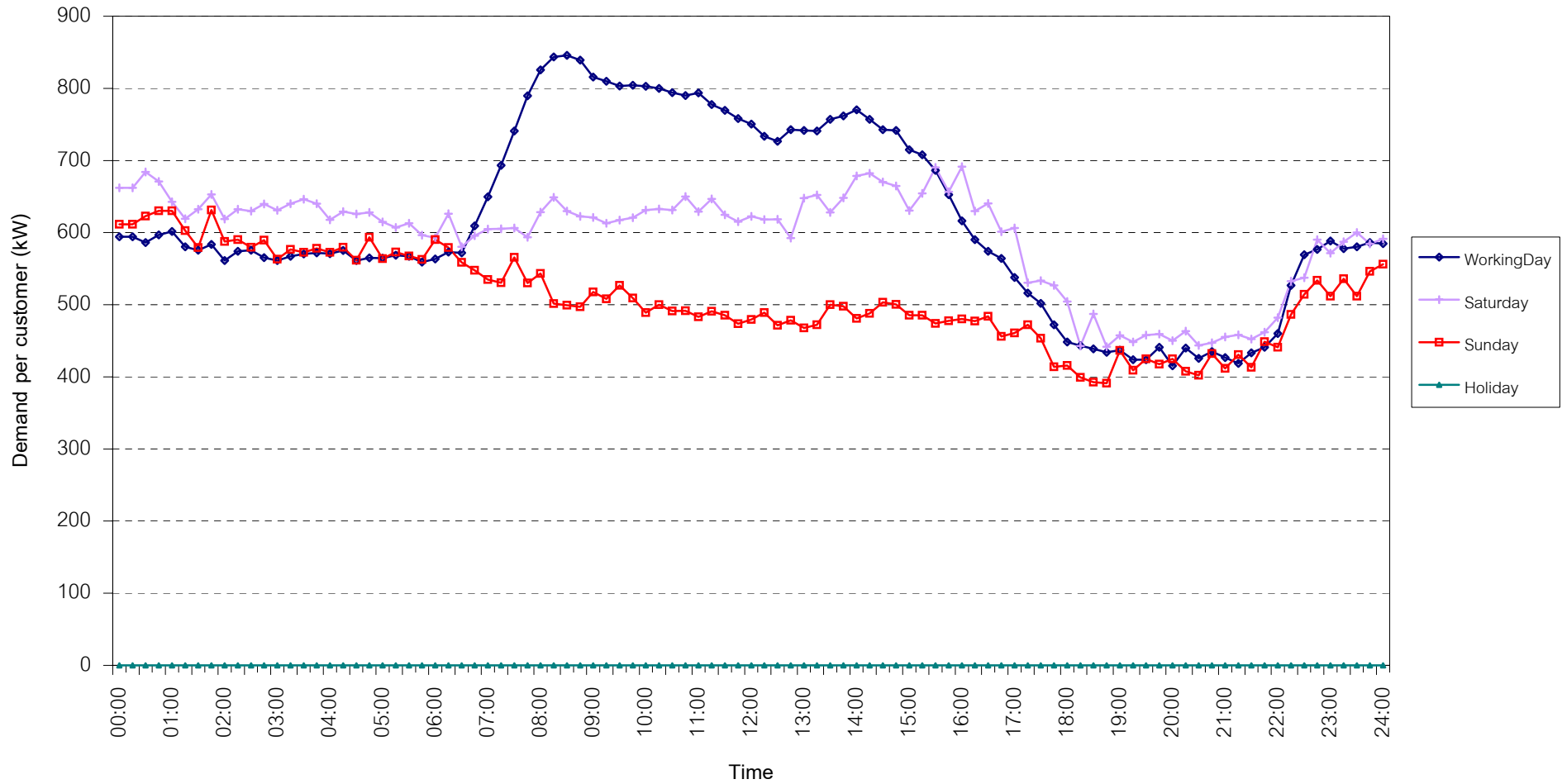
กราฟรูปที่ 8



## TSIC 31 (Food Processing) Load Profile

Date: 1 Jun, 2009 to 30 Jun, 2009

Number of sample customers = 30



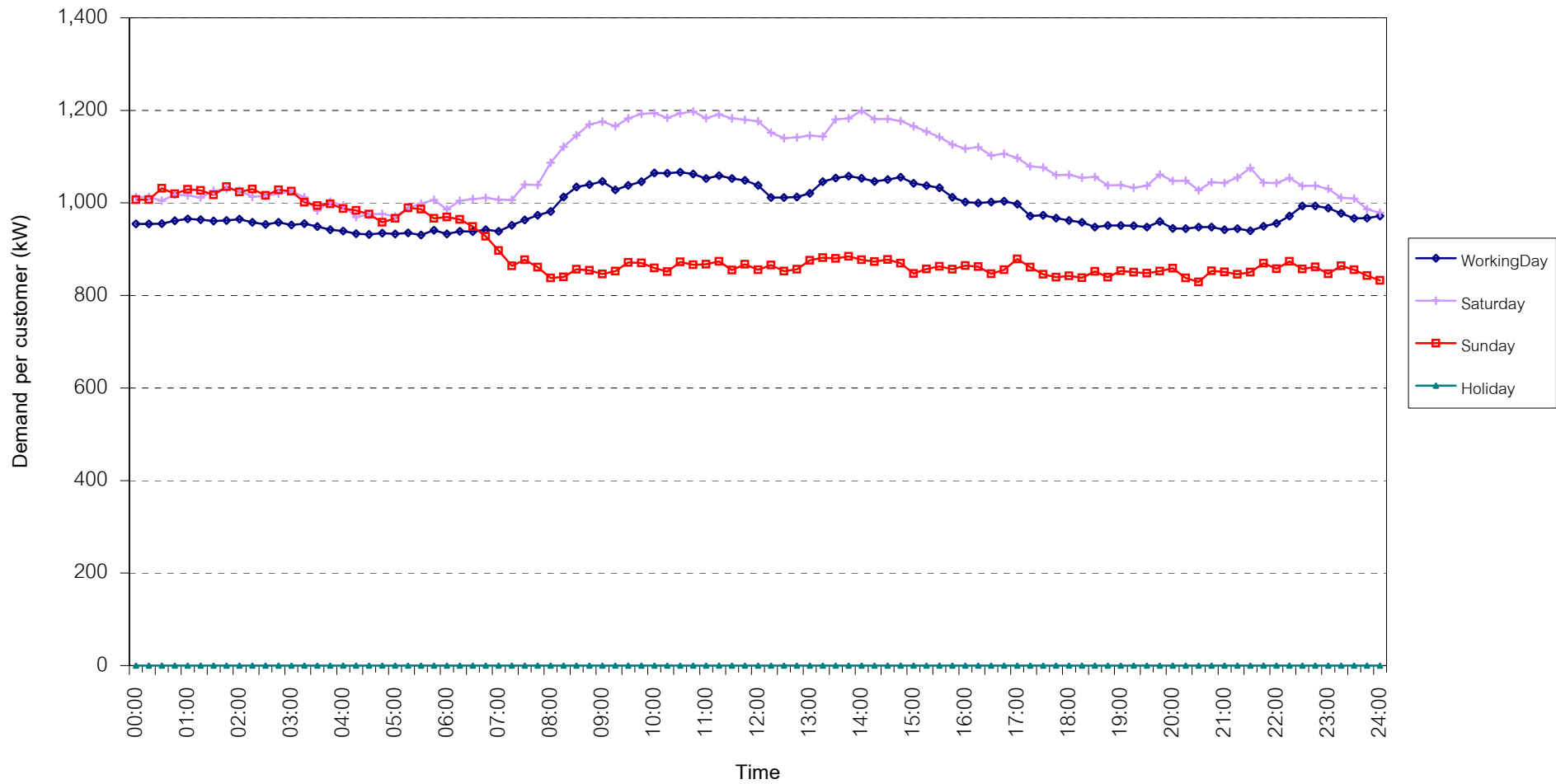
กราฟรูปที่ 9



## TSIC 32 (Textiles) Load Profile

Date: 1 Jun, 2009 to 30 Jun, 2009

Number of sample customers = 63



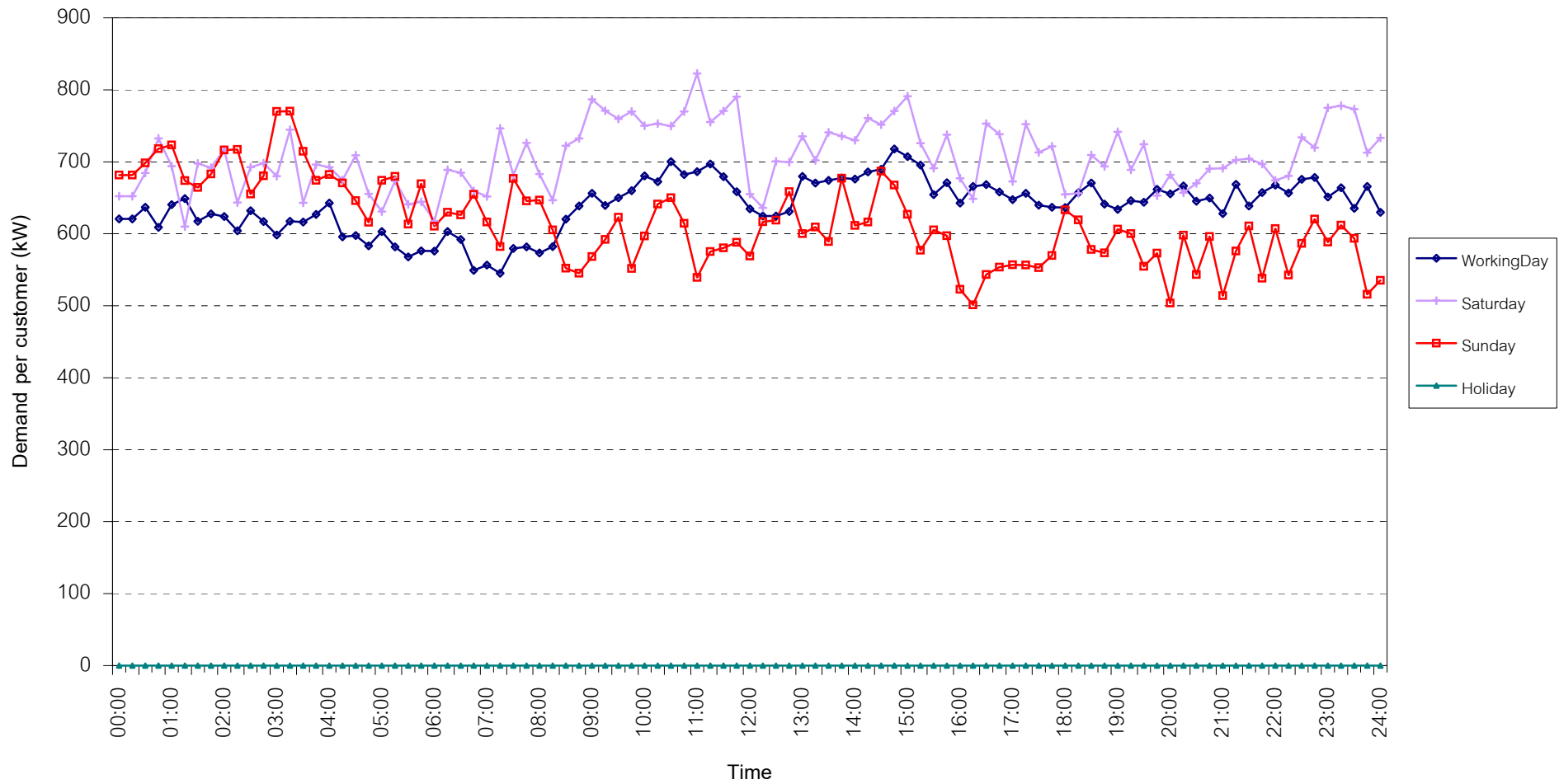
กราฟรูปที่ 10



## TSIC 34 (Paper & Printing) Load Profile

Date: 1 Jun, 2009 to 30 Jun, 2009

Number of sample customers = 12



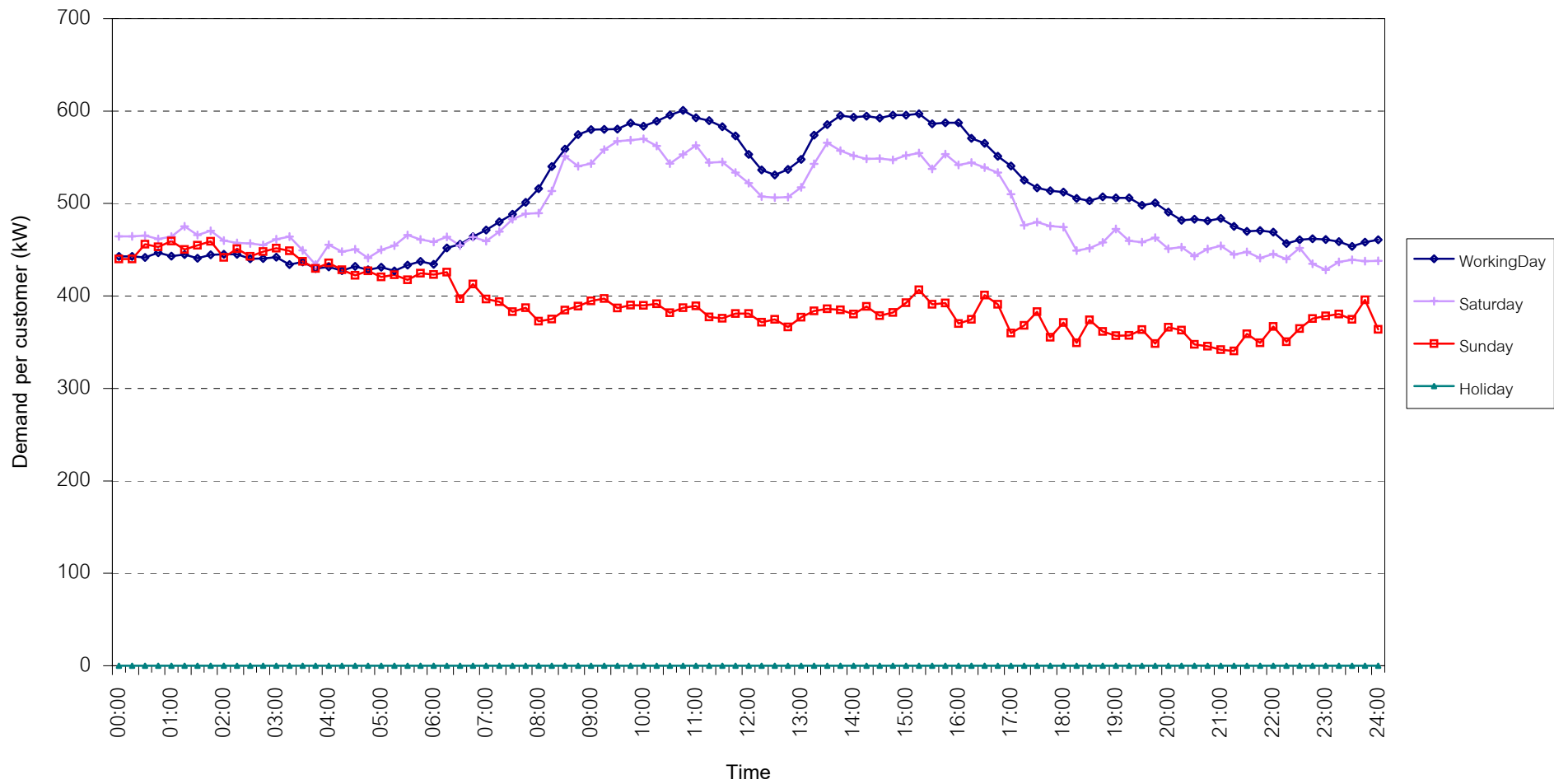
กราฟรูปที่ 11



TSIC 35 (Chemical & Petroleum) Load Profile

Date: 1 Jun, 2009 to 30 Jun, 2009

Number of sample customers = 72



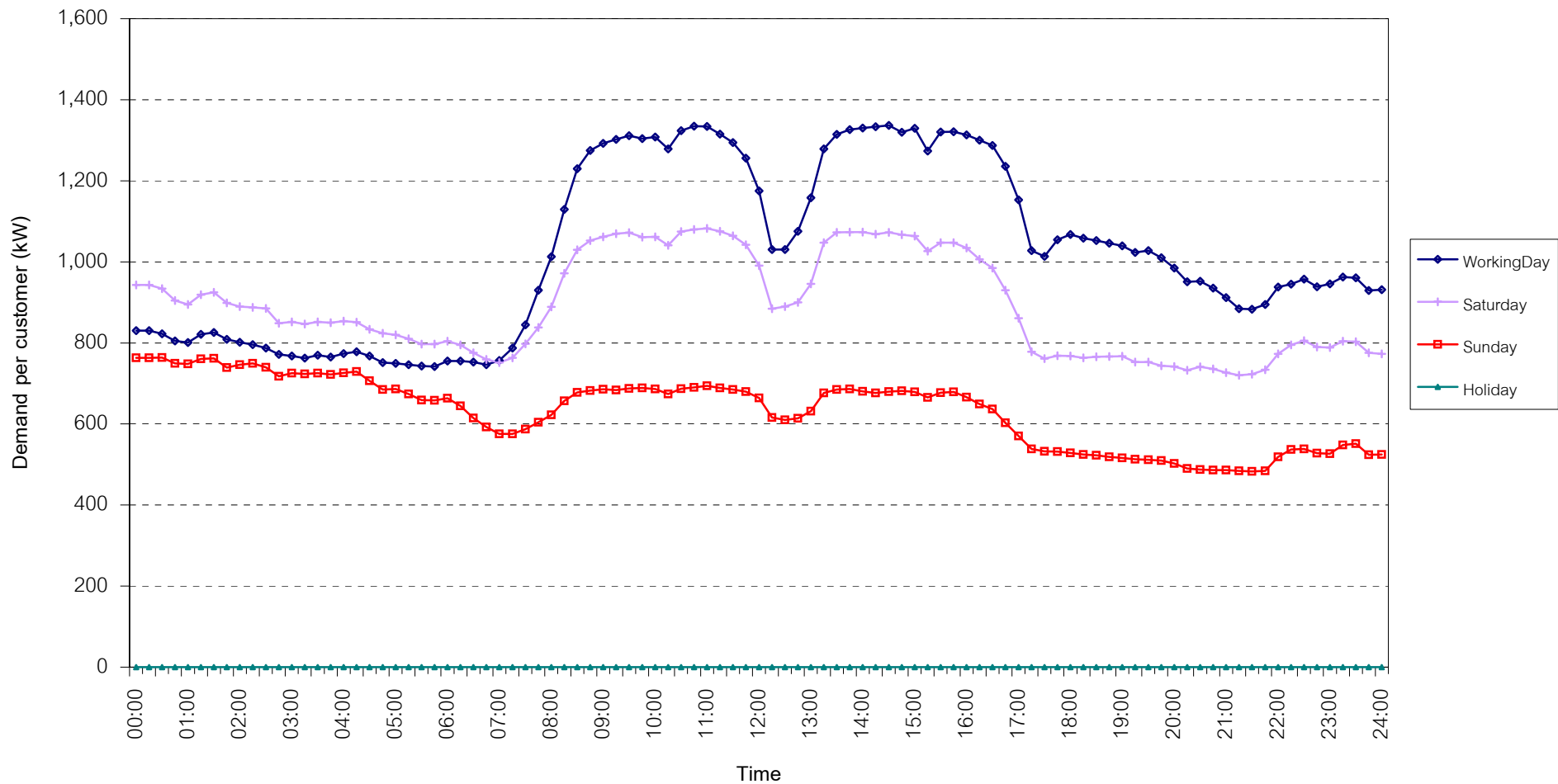
กราฟรูปที่ 12



## TSIC 38 (Fabricated Metal Products) Load Profile

Date: 1 Jun, 2009 to 30 Jun, 2009

Number of sample customers = 62



กราฟรูปที่ 13

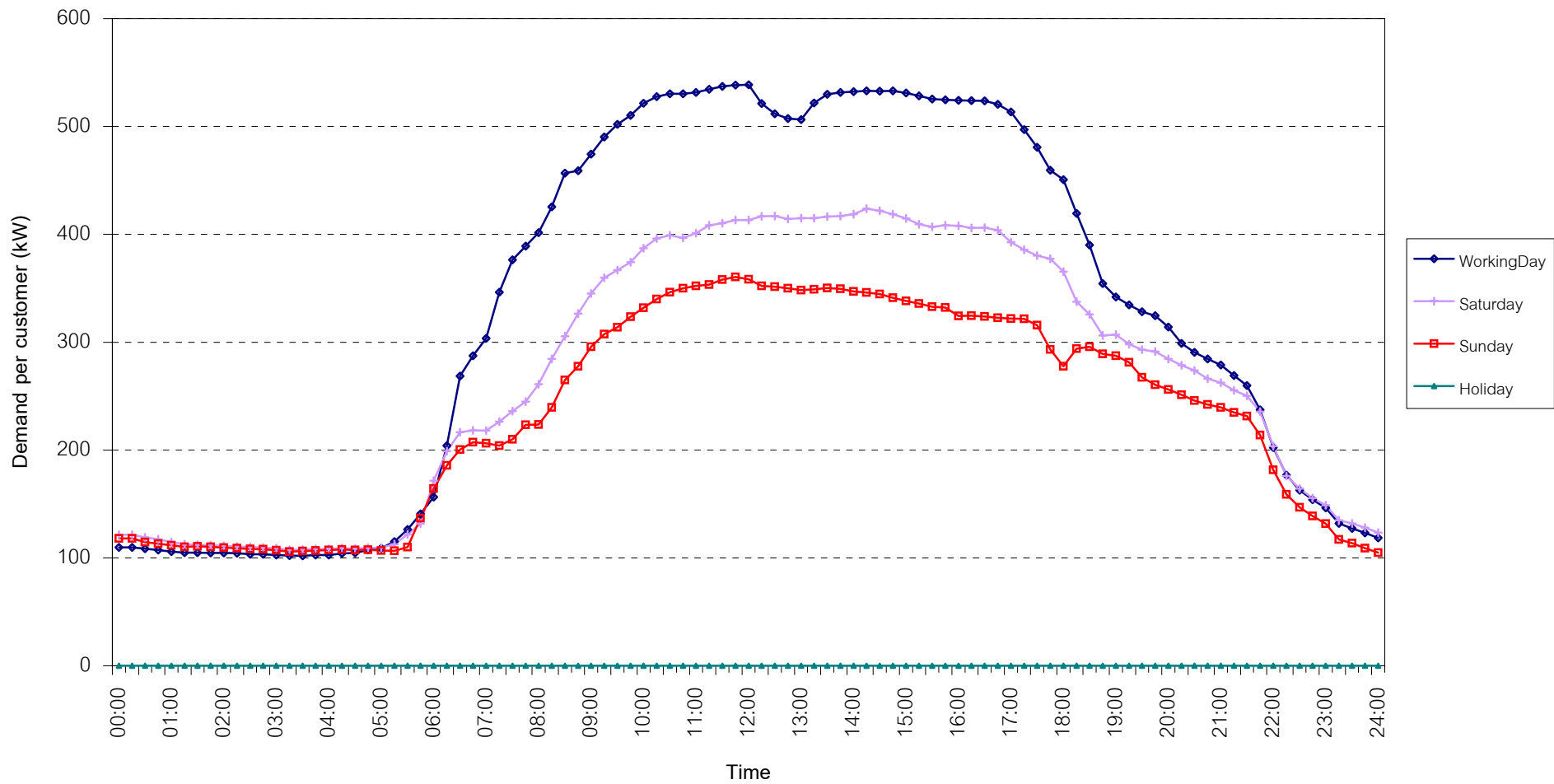




## TSIC 61 (Wholesale Trade) Load Profile

Date: 1 Jun, 2009 to 30 Jun, 2009

Number of sample customers = 36



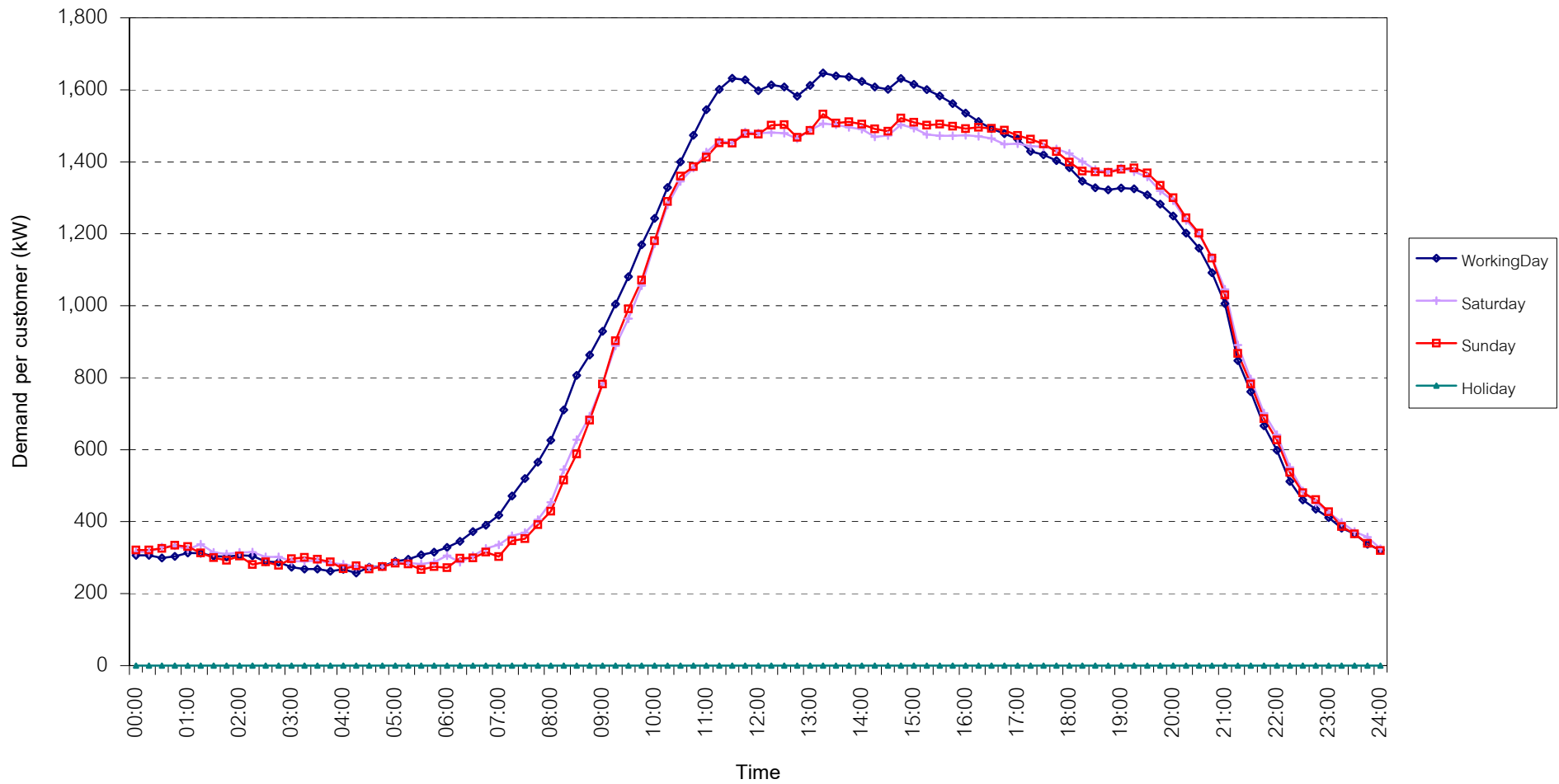
กราฟรูปที่ 14



## TSIC 62 (Retail Trade) Load Profile

Date: 1 Jun, 2009 to 30 Jun, 2009

Number of sample customers = 87



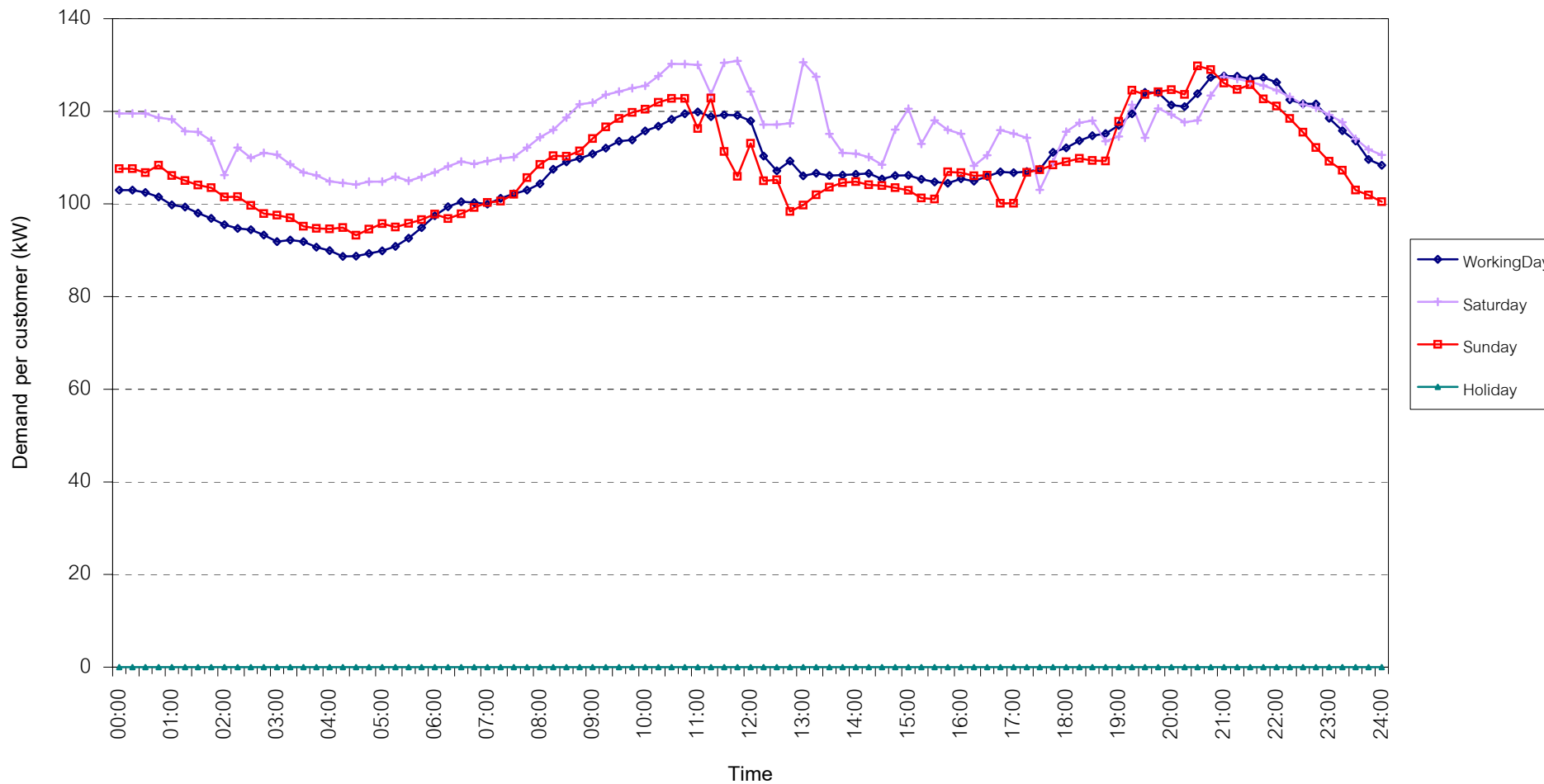
กราฟรูปที่ 15



## TSIC 63 (Hotels and restaurants) Load Profile

Date: 1 Jun, 2009 to 30 Jun, 2009

Number of sample customers = 107



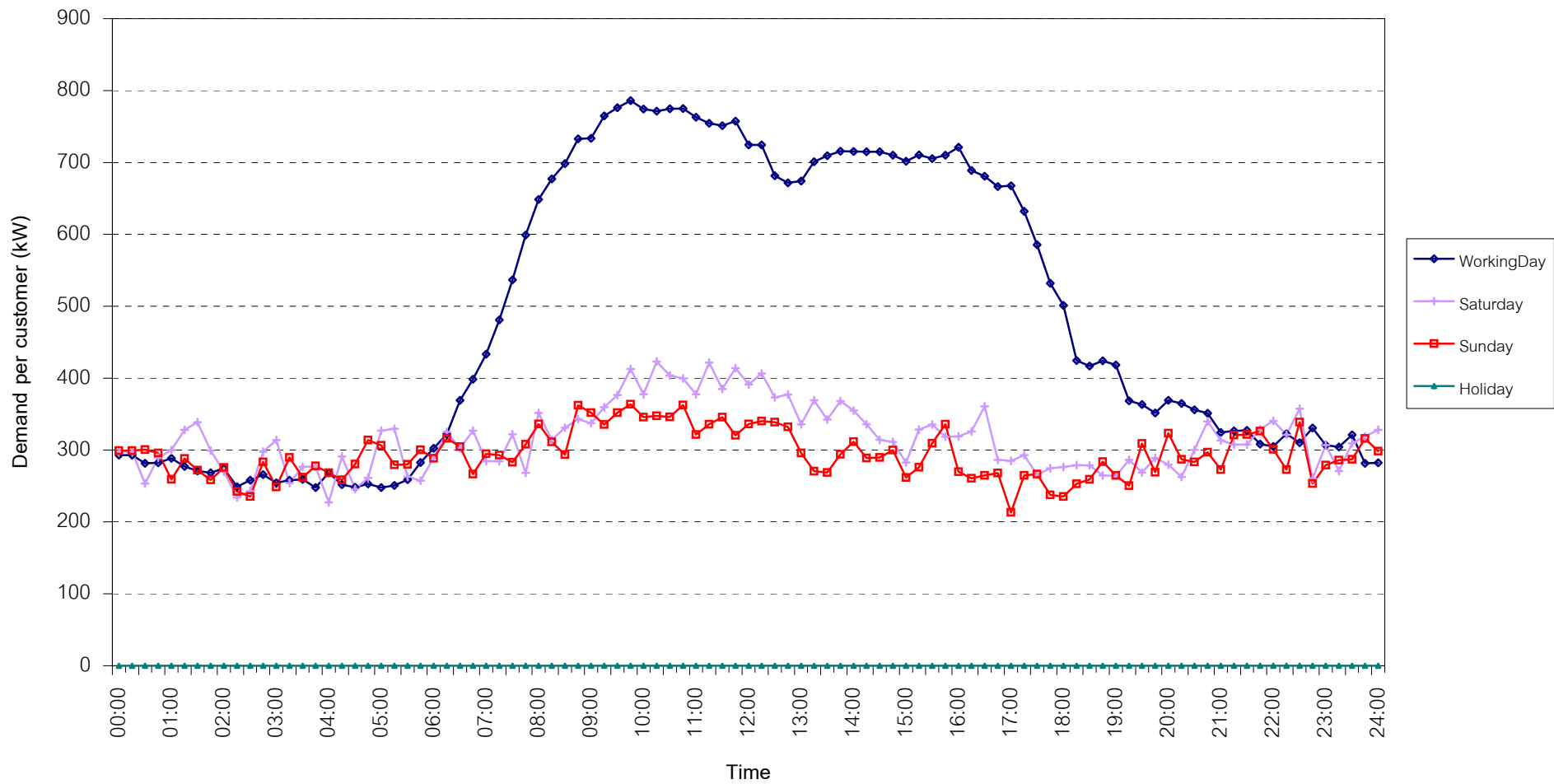
กราฟรูปที่ 16



## TSIC 83 (Real Estate) Load Profile

Date: 1 Jun, 2009 to 30 Jun, 2009

Number of sample customers = 40



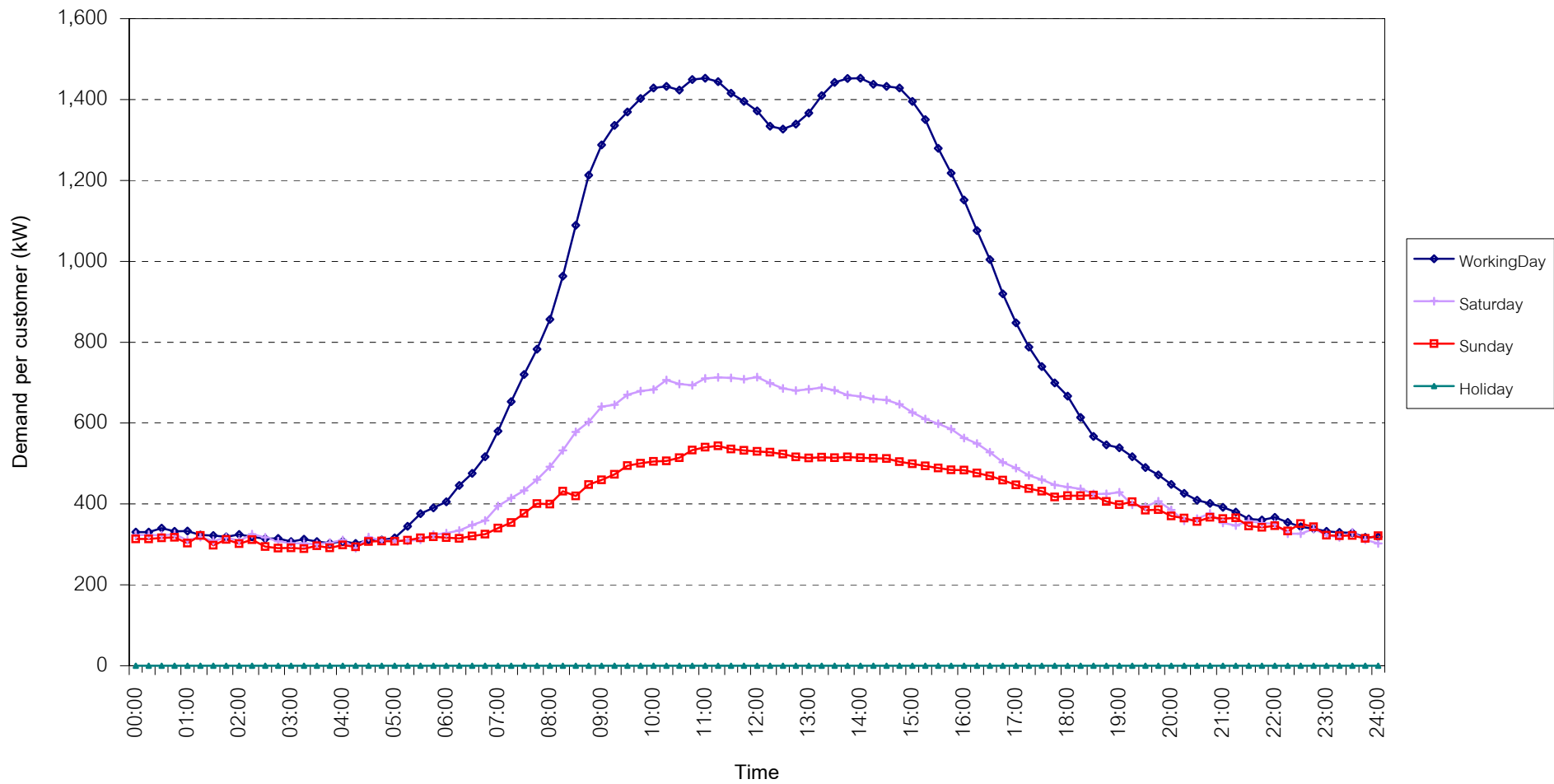
กราฟรูปที่ 17



## TSIC 93 (Social Services) Load Profile

Date: 1 Jun, 2009 to 30 Jun, 2009

Number of sample customers = 25

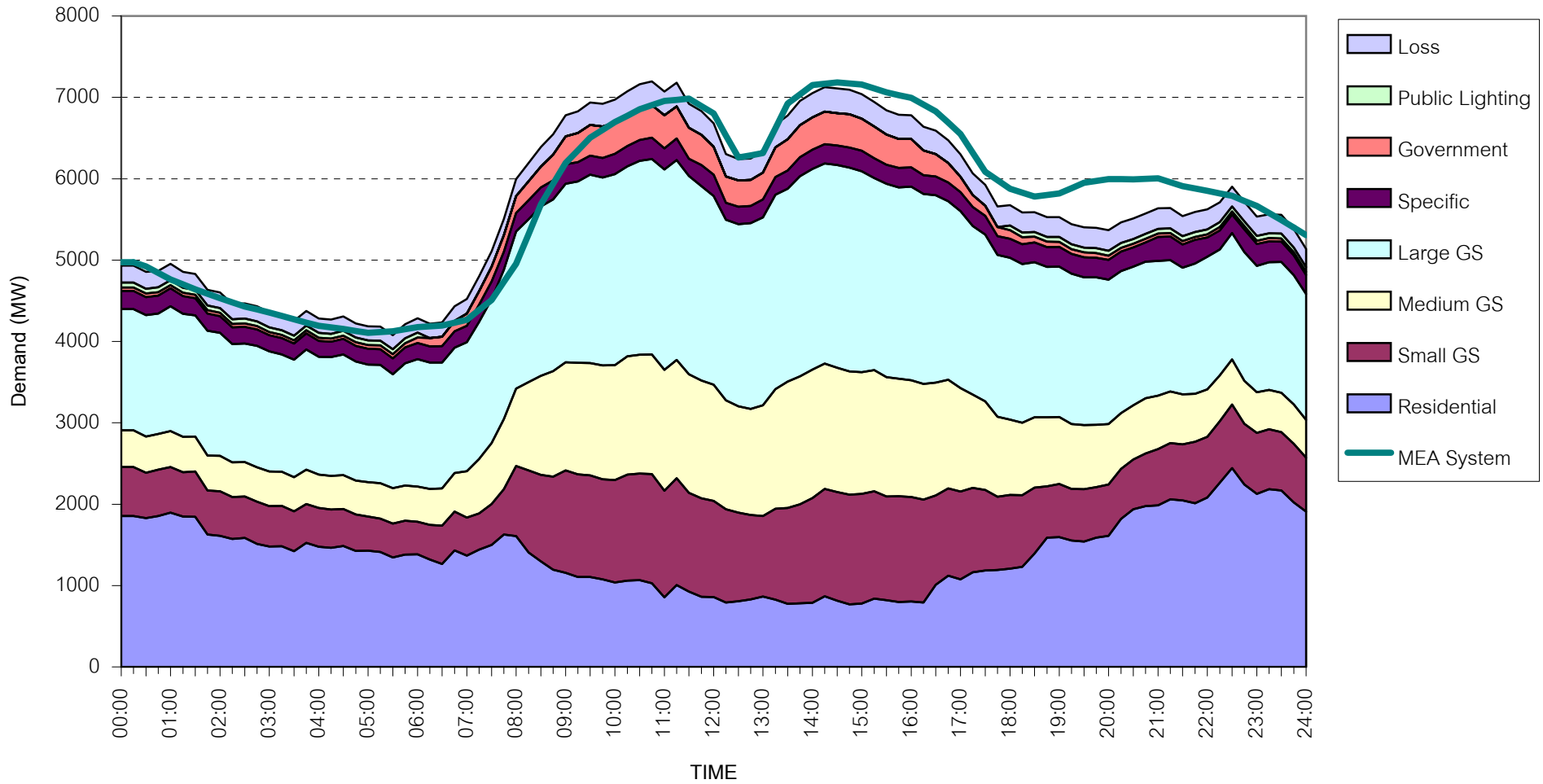


กราฟรูปที่ 18



MEA's System Load Profile

Peak Day 25 Jun, 2009 at 14:30



กราฟรูปที่ 19