



ข้อมูลการศึกษาลักษณะการใช้ไฟฟ้า เดือน กุมภาพันธ์ 2552



Table 1-1

COINCIDENT WITH LOAD RESEARCH SYSTEM'S PEAK ON February 26,2009 time 10:45 6,726.34 MW
(MEA SYSTEM'S PEAK ON February 26,2009 time 14:30 7,053.60 MW)

CLASS	Number of Customers	Kilowatt hours	Coincident Peak (MEA System Peak at time 14:30)		Coincident Peak (Load Research System Peak at time 11:30)		Sector Diversified Demand		
			MW	Contribution (%)	MW	Contribution (%)	Max MW.	Date	Time
Residential	2,297,197	759,953,398	861.08	12.88	874.55	13.00	2,183.36	24 Feb 09	22:45
Small General Service	479,883	505,982,731	1,195.78	17.88	1,228.34	18.26	1,472.69	23 Feb 09	11:30
Medium General Service	19,743	586,214,296	1,481.85	22.16	1,485.00	22.08	1,714.31	19 Feb 09	14:00
Large General Service	1,665	1,098,756,142	2,366.38	35.39	2,339.02	34.77	2,499.02	26 Feb 09	13:45
Specific Business	2,346	138,578,130	260.55	3.90	254.89	3.79	276.36	28 Feb 09	19:00
Government and non Profit organization	11,270	98,381,560	332.75	4.98	363.12	5.40	491.06	3 Feb 09	11:15
Public Lighting	4,176	18,907,030	0.00	0.00	0.00	0.00	54.62	-	-
Loss	-	90,759,949	188.45	2.82	181.42	2.70	188.45	26 Feb 09	14:30
TOTAL	2,816,280	3,297,533,236	6,686.86	100	6,726.34	100	6,726.34	26 Feb 09	10:45



Table 1-2

Number of sample customers on Febuary, 2009

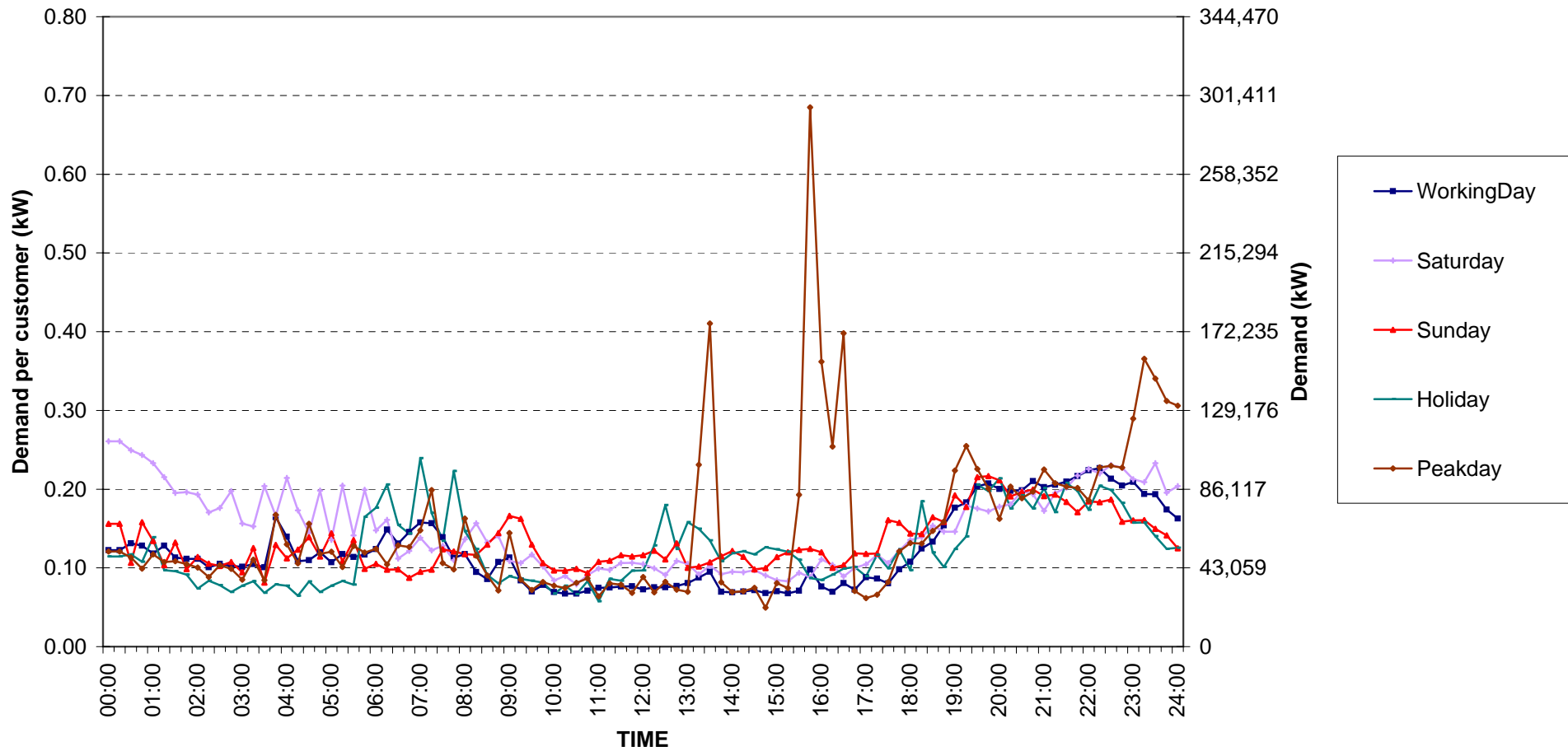
CLASS	Number of sample customers (Target)	Number of sample customers (Collected)
Residential	191	191
Small General Service	297	297
Medium General Service	163	163
Large General Service	328	328
Specific Business	76	76
Government and Non-profit Organization	68	68
TOTAL	1,123	1,123



Residential (Energy Consumption less than 150 kWh per month)

Date: 1 Feb, 2009 to 28 Feb, 2009

Number of sample customers = 10



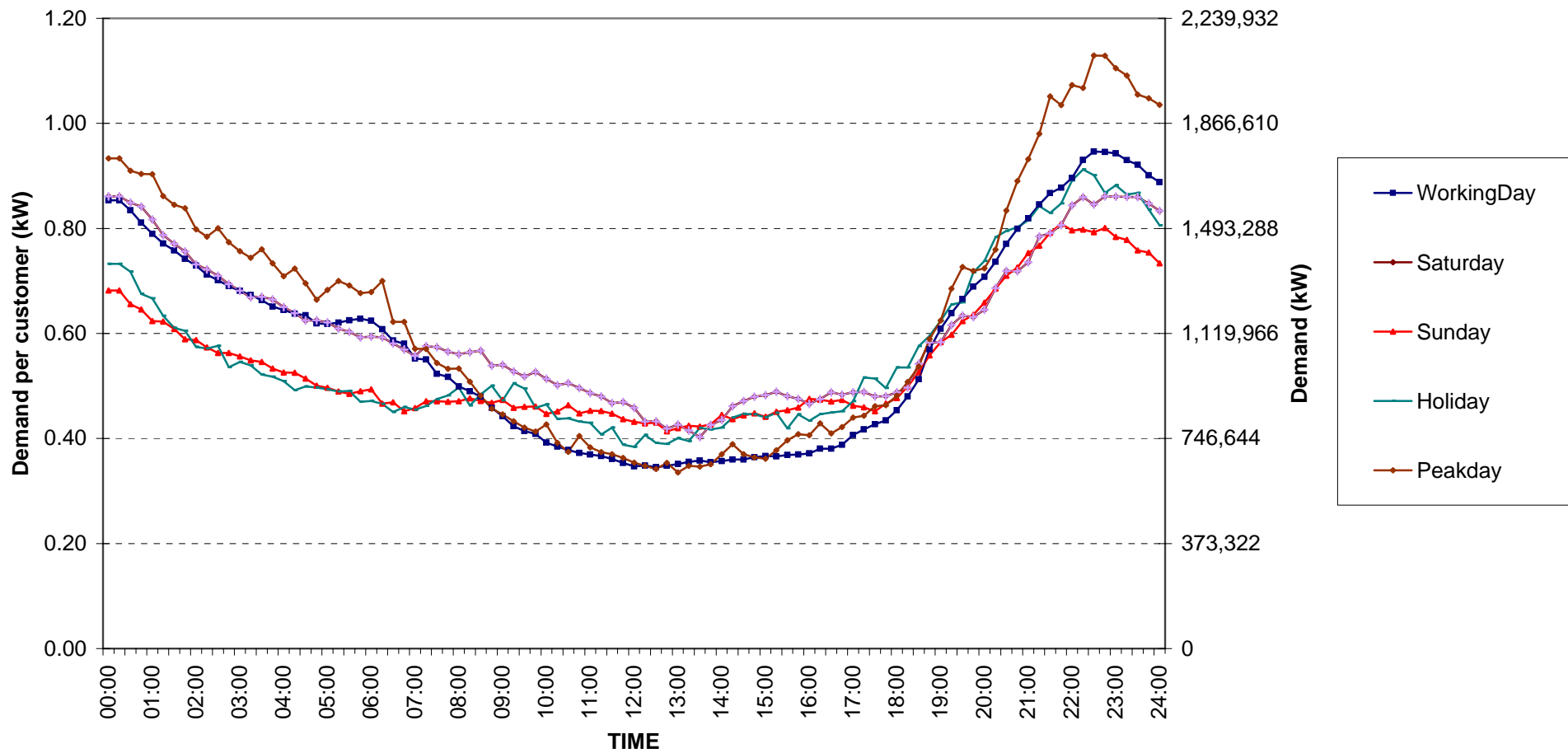
กราฟรูปที่ 1



Residential (Energy Consumption more than 150 kWh per month)

Date: 1 Feb, 2009 to 28 Feb, 2009

Number of sample customers = 181



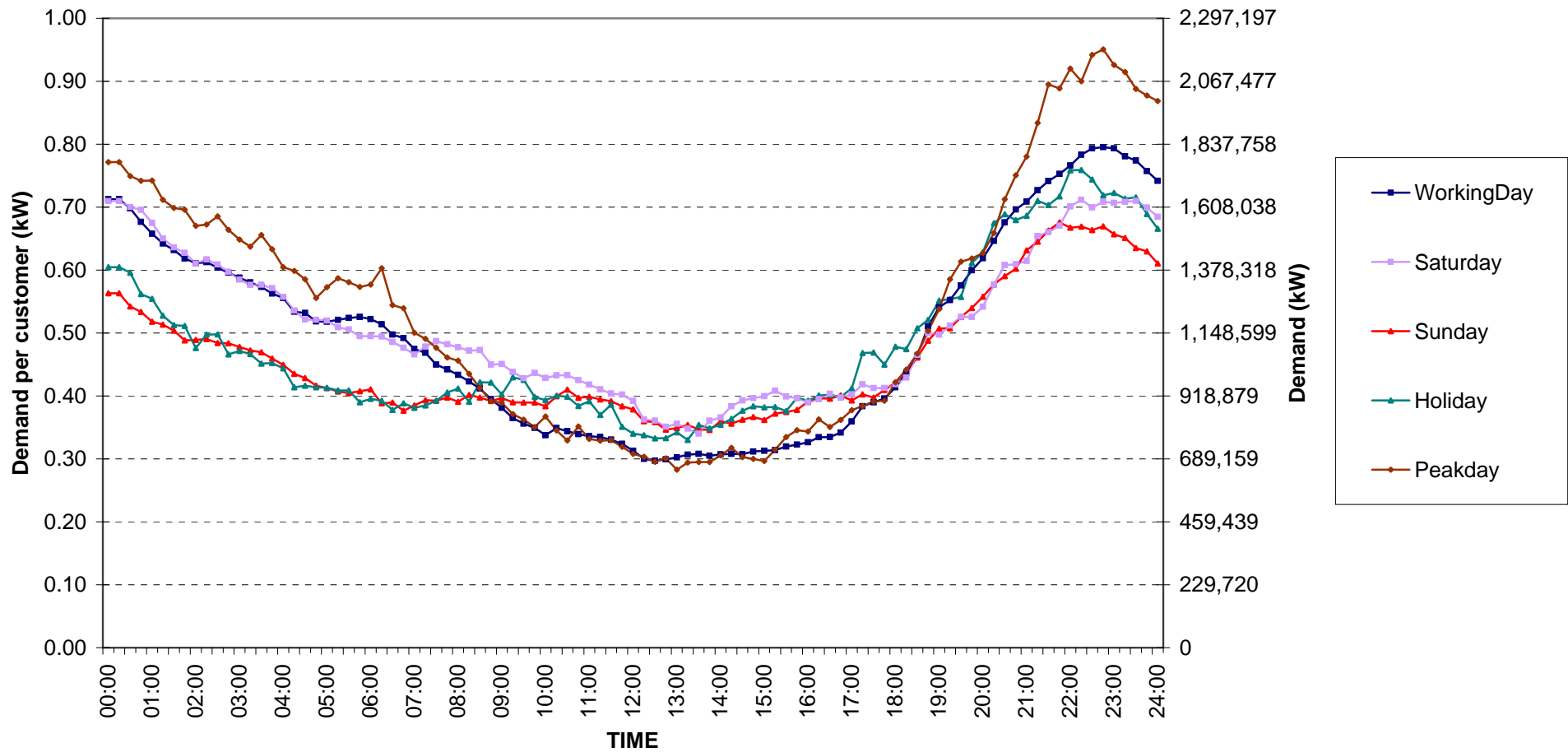
กราฟรูปที่ 2



Residential Load Profile

Date: 1 Feb, 2009 to 28 Feb, 2009

Number of sample customers = 191



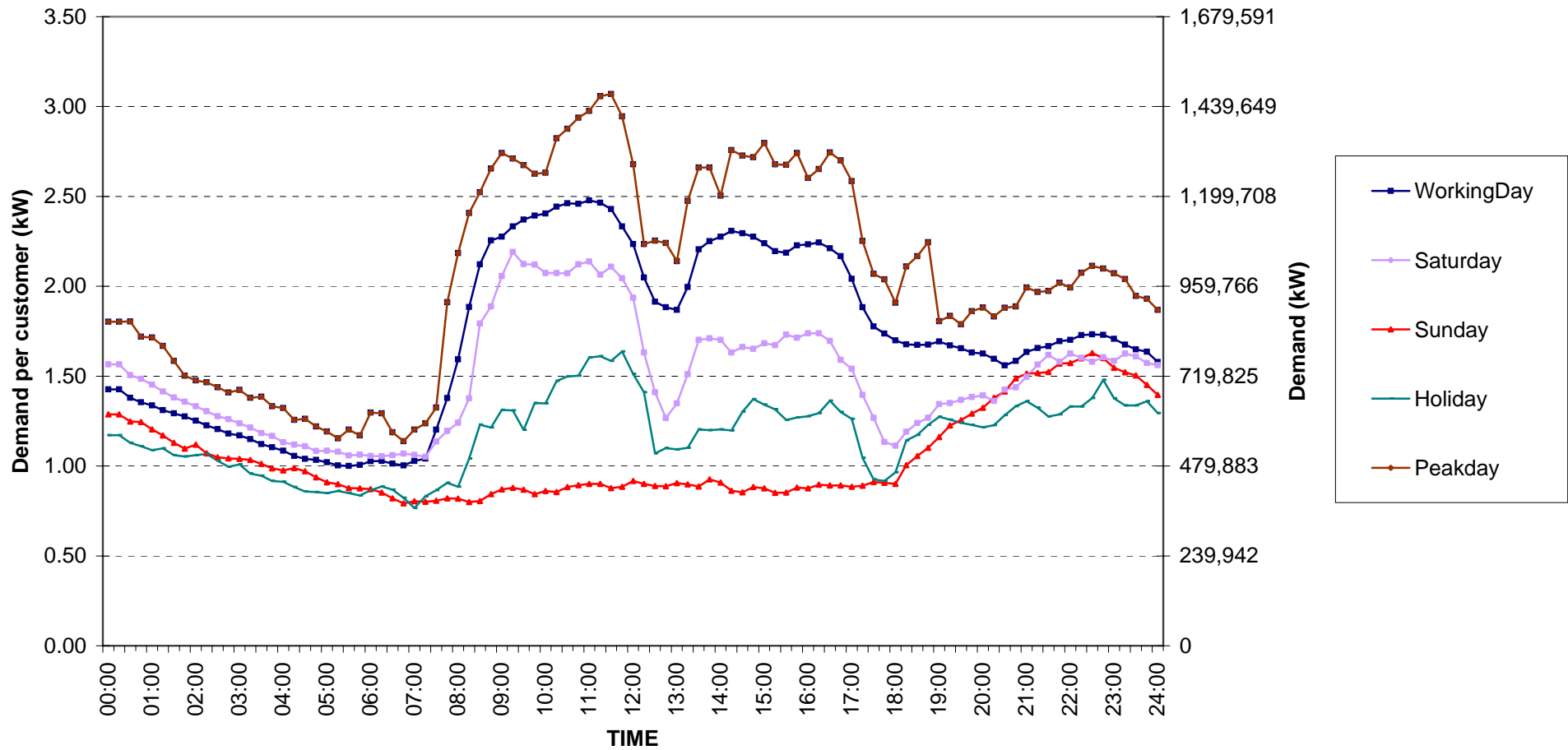
กราฟรูปที่ 3



Small General Services Load Profile

Date: 1 Feb, 2009 to 28 Feb, 2009

Number of sample customers = 297



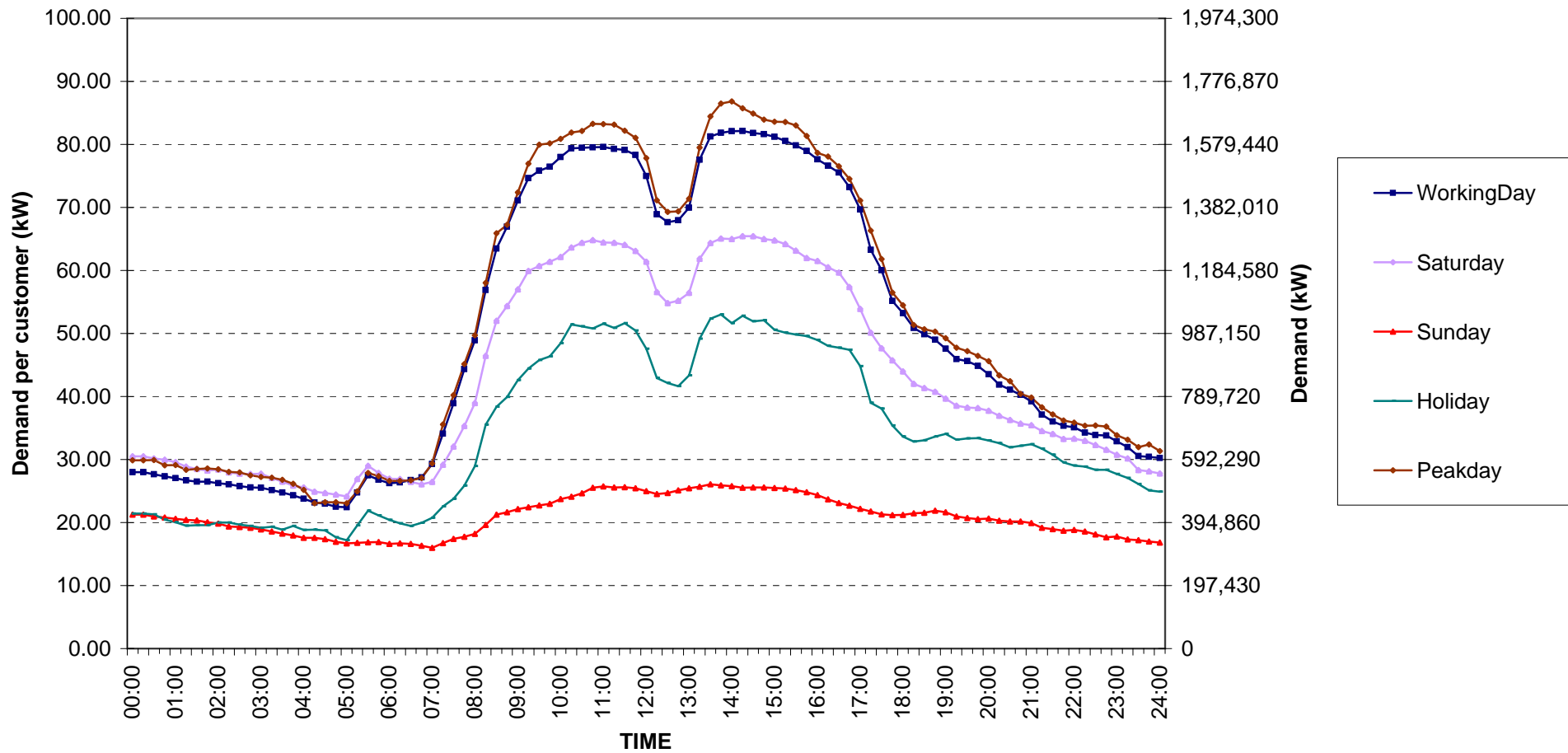
กราฟรูปที่ 4



Medium General Services Load Profile

Date: 1 Feb, 2009 to 28 Feb, 2009

Number of sample customers = 163



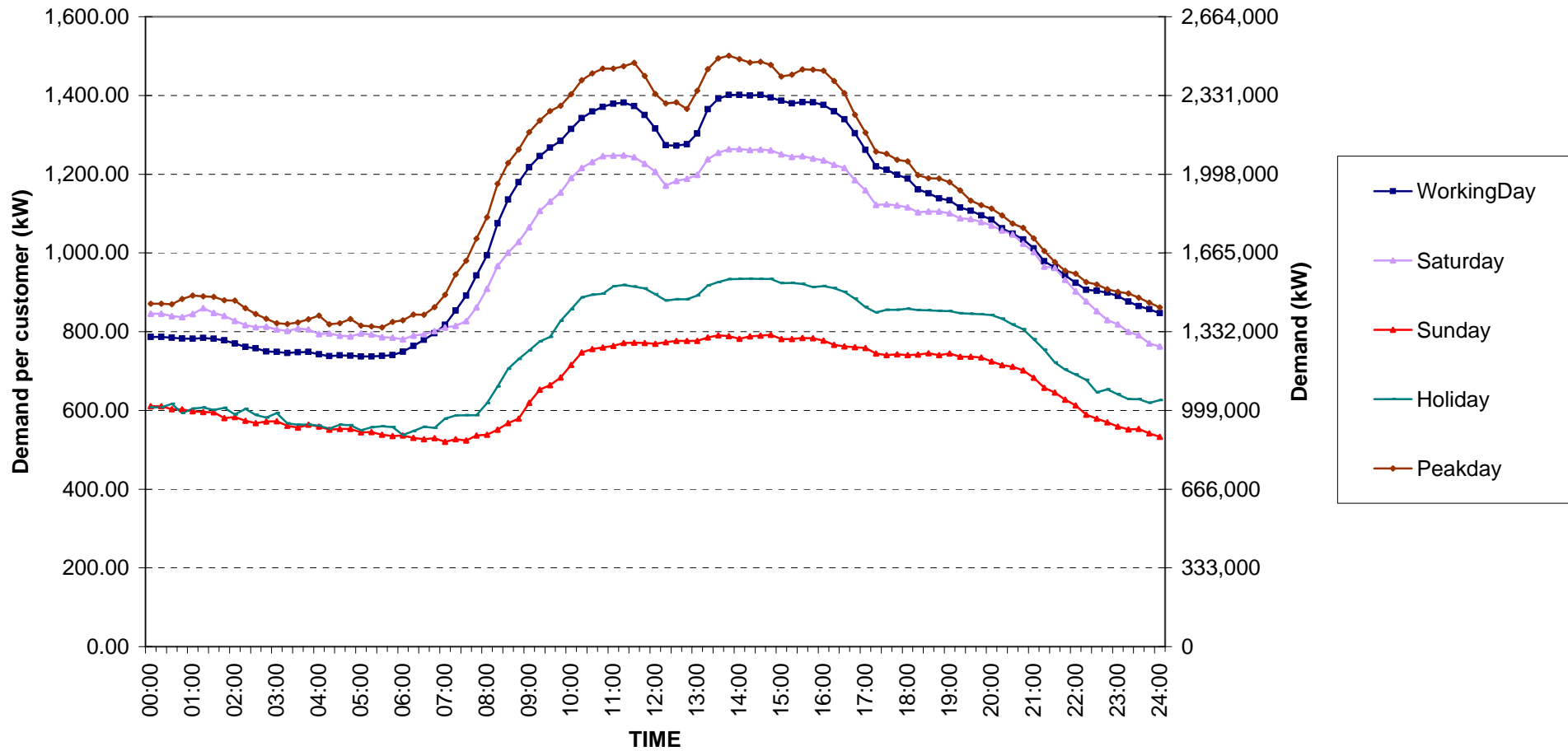
กราฟรูปที่ 5



Large General Services Load Profile

Date: 1 Feb, 2009 to 28 Feb, 2009

Number of sample customers = 328



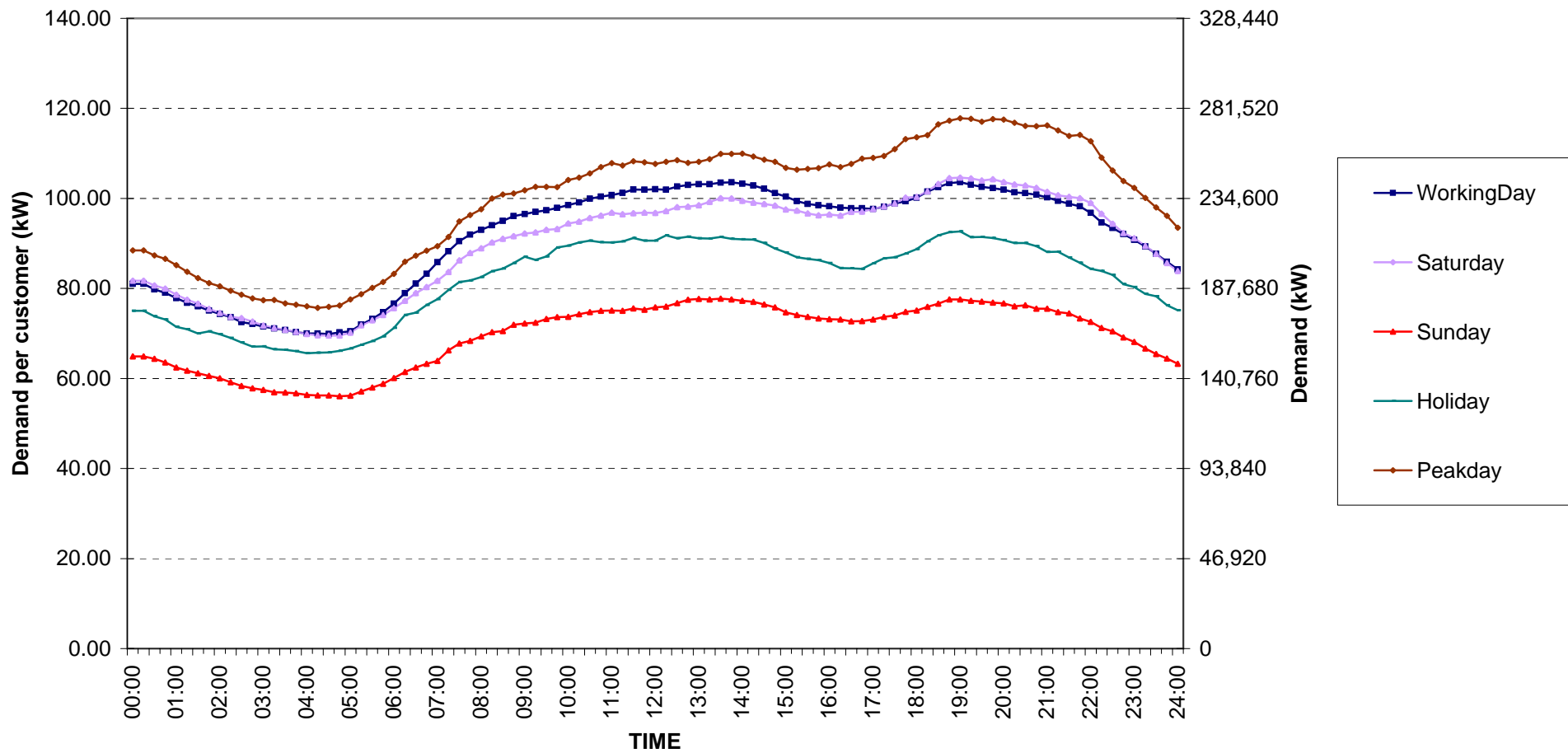
กราฟรูปที่ 6



Specific Business Load Profile

Date: 1 Feb, 2009 to 28 Feb, 2009

Number of sample customers = 76



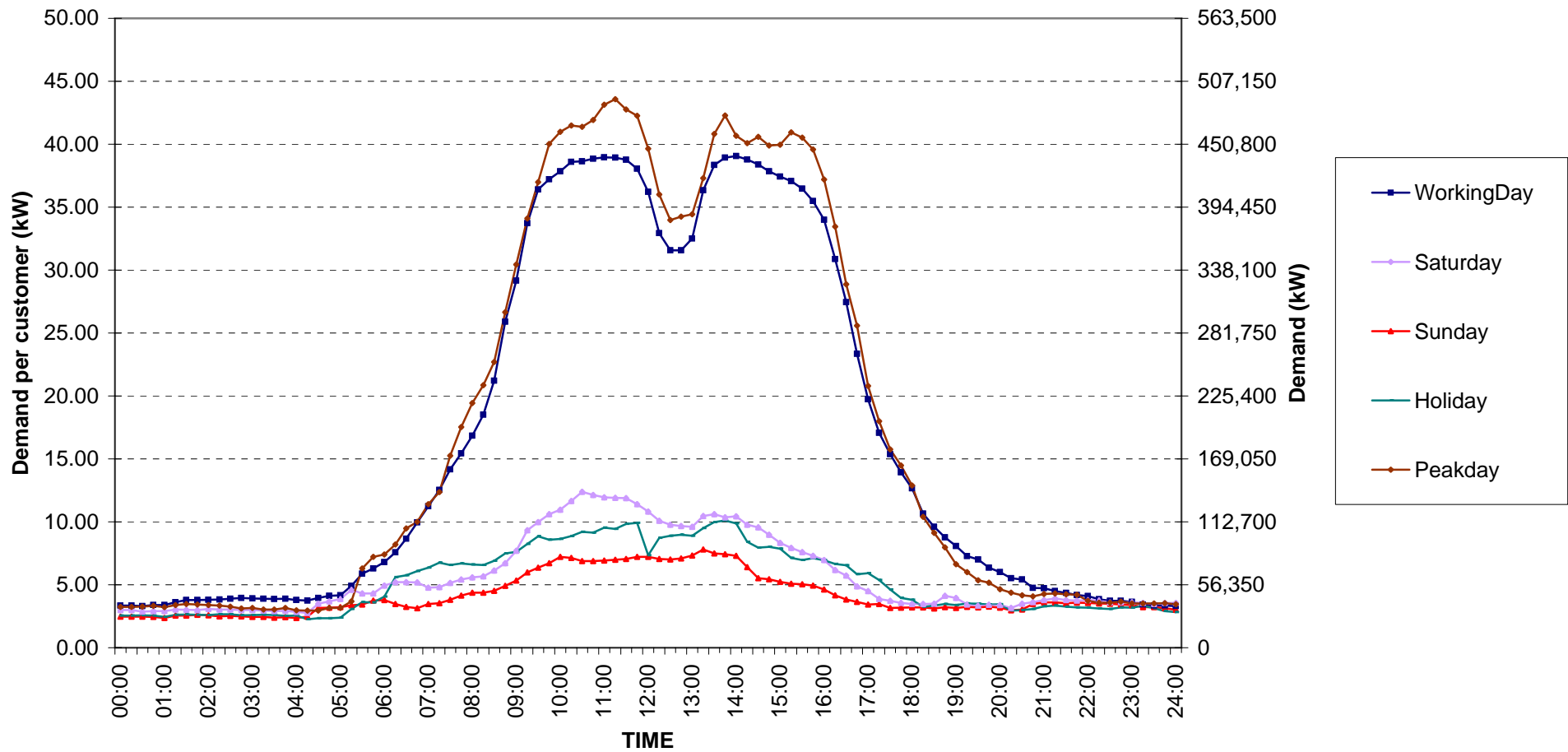
กราฟรูปที่ 7



Government institutions and non-profit organizations Load Profile

Date: 1 Feb, 2009 to 28 Feb, 2009

Number of sample customers = 68



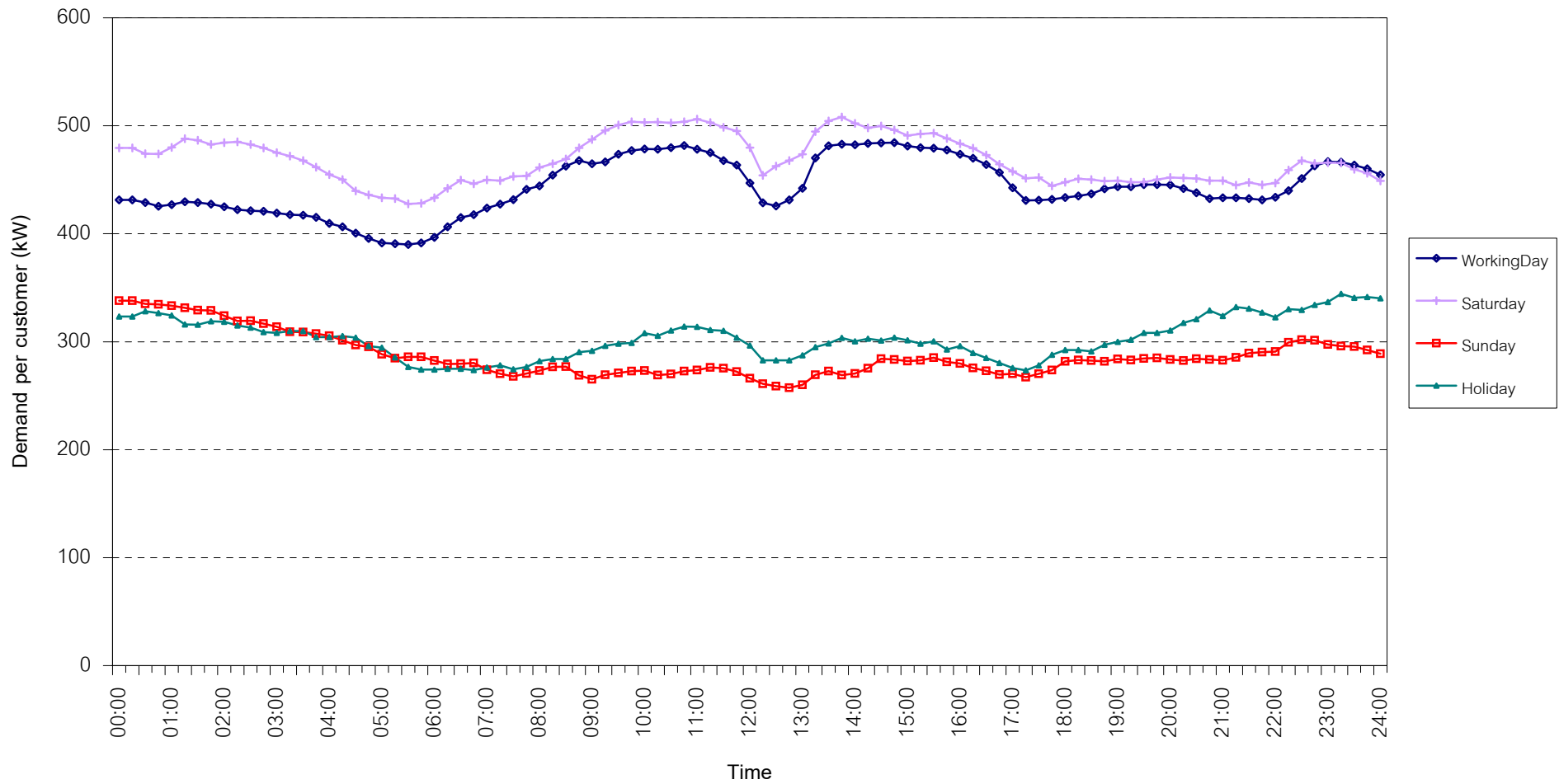
กราฟรูปที่ 8



TSIC 31 (Food Processing) Load Profile

Date: 1 Feb, 2009 to 28 Feb, 2009

Number of sample customers = 30



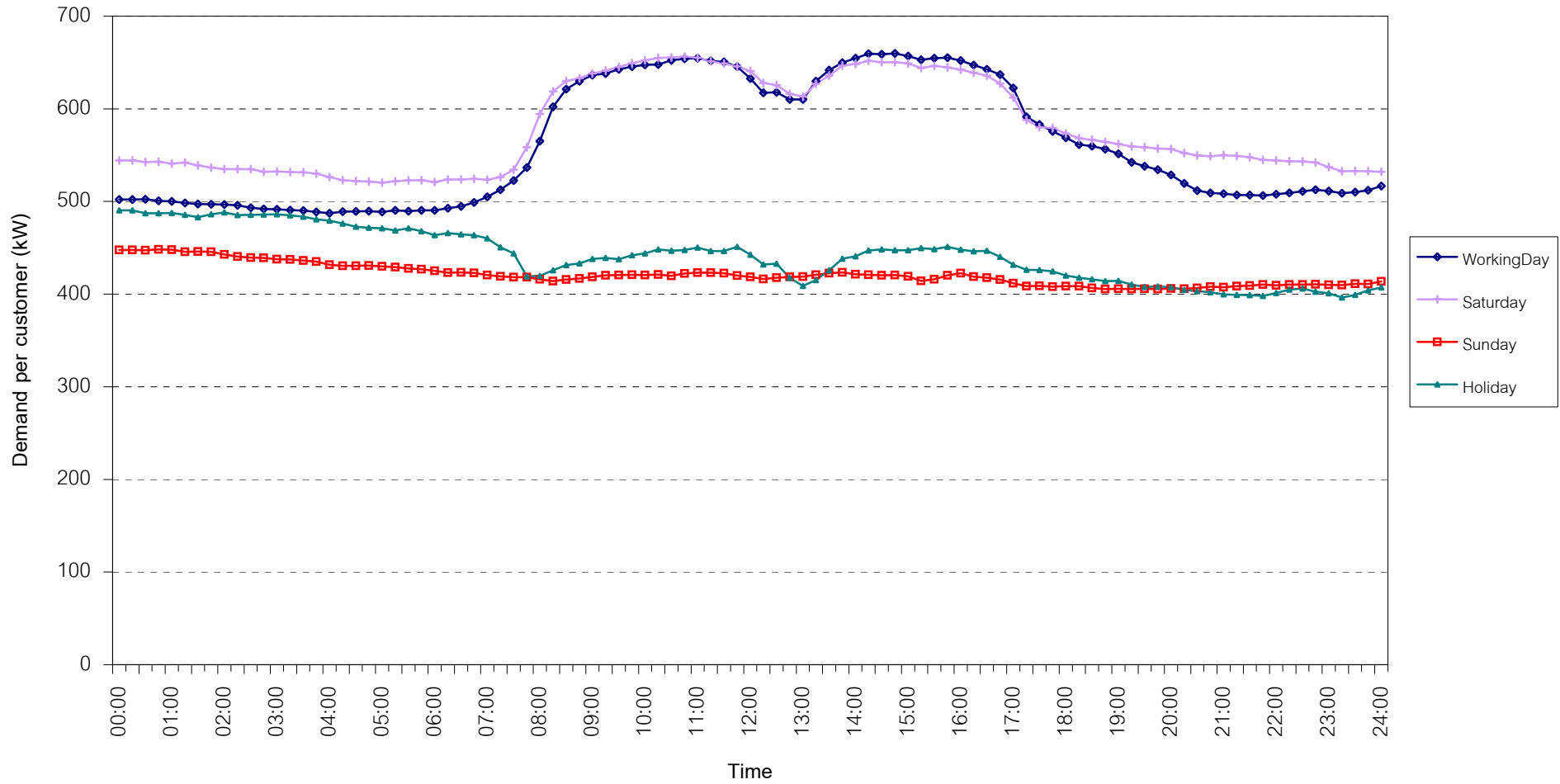
กราฟรูปที่ 9



TSIC 32 (Textiles) Load Profile

Date: 1 Feb, 2009 to 28 Feb, 2009

Number of sample customers = 63



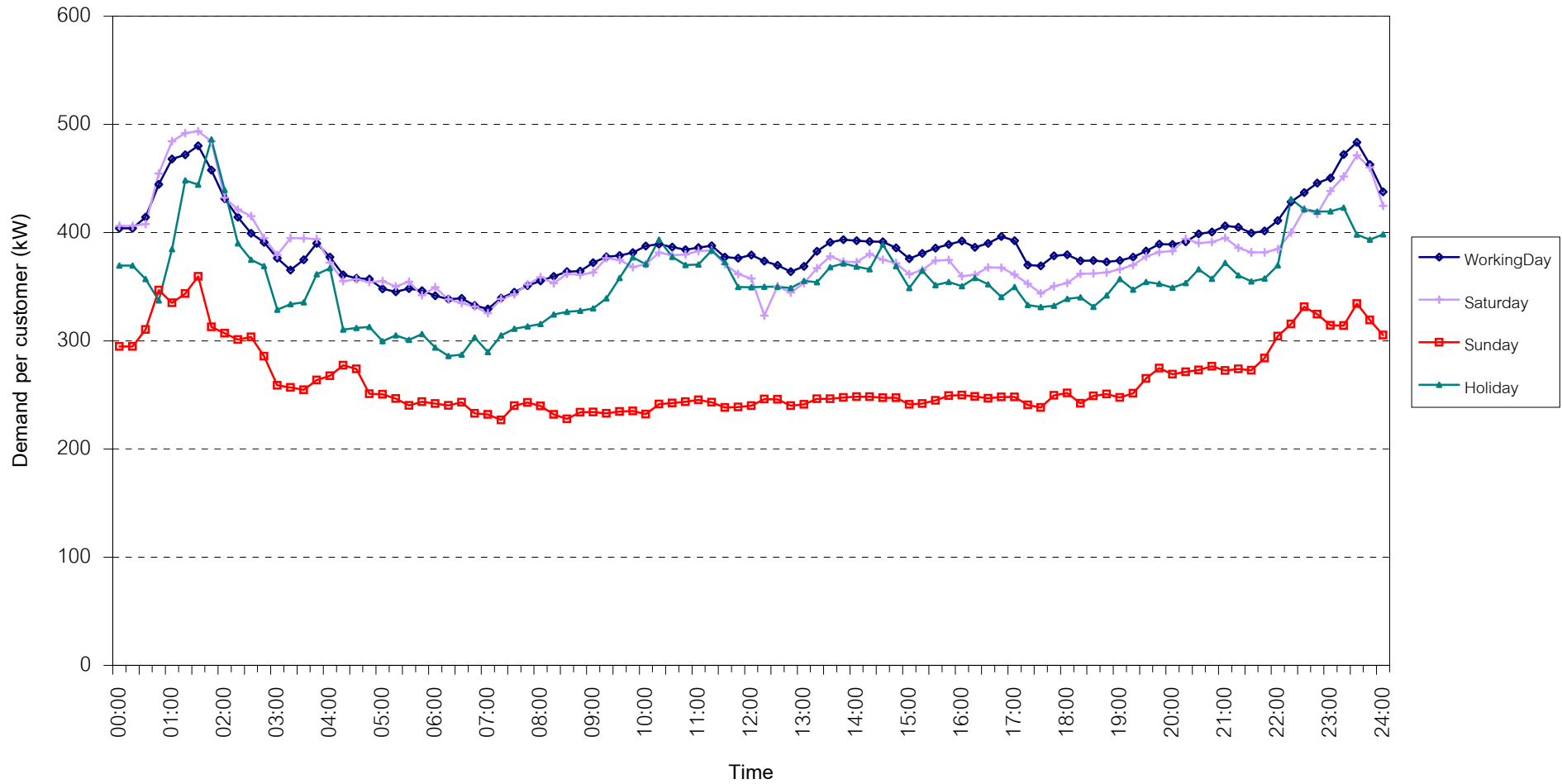
กราฟรูปที่ 10



TSIC 34 (Paper & Printing) Load Profile

Date: 1 Feb, 2009 to 28 Feb, 2009

Number of sample customers = 10



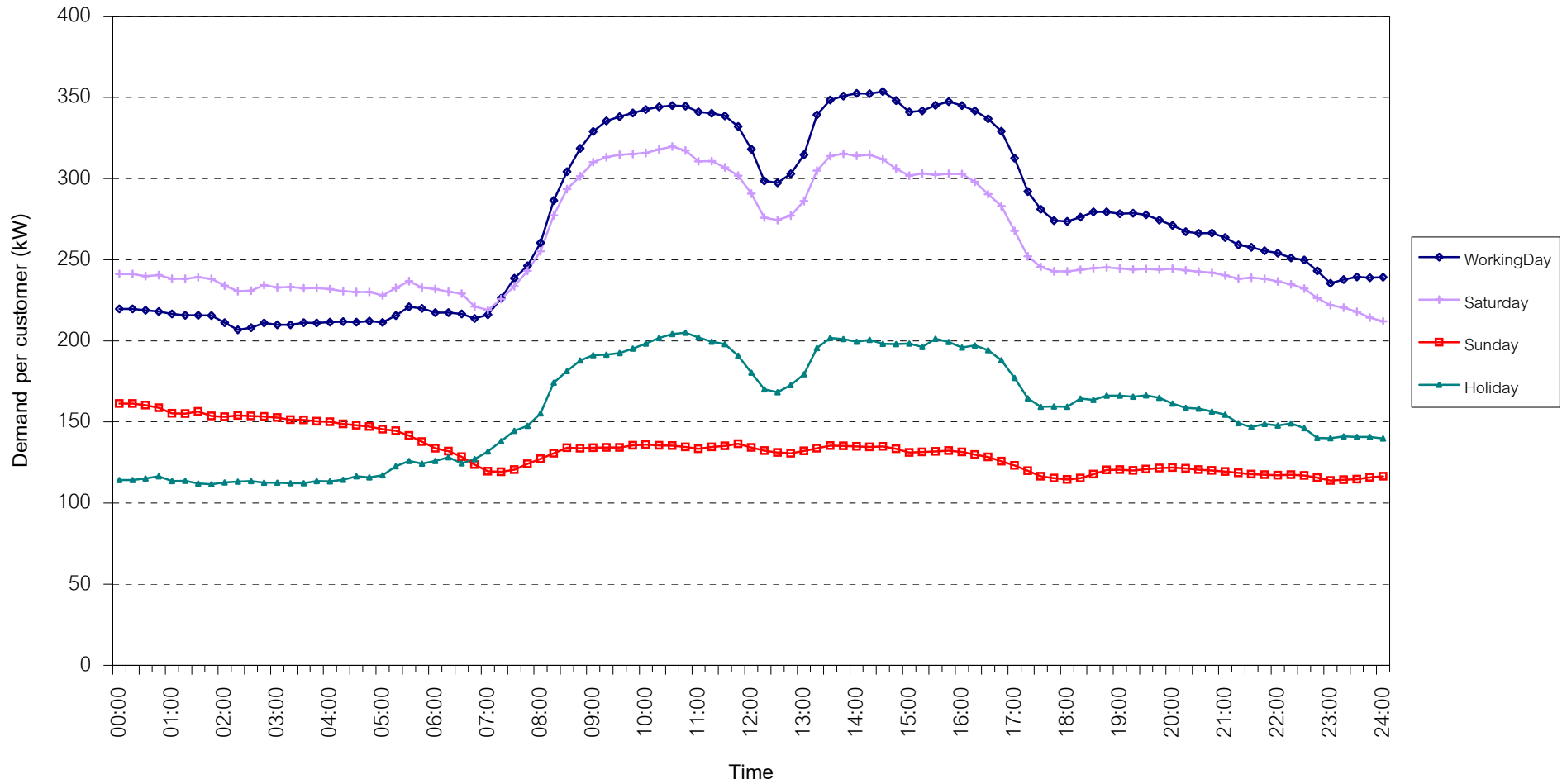
กราฟรูปที่ 11



TSIC 35 (Chemical & Petroleum) Load Profile

Date: 1 Feb, 2009 to 28 Feb, 2009

Number of sample customers = 62



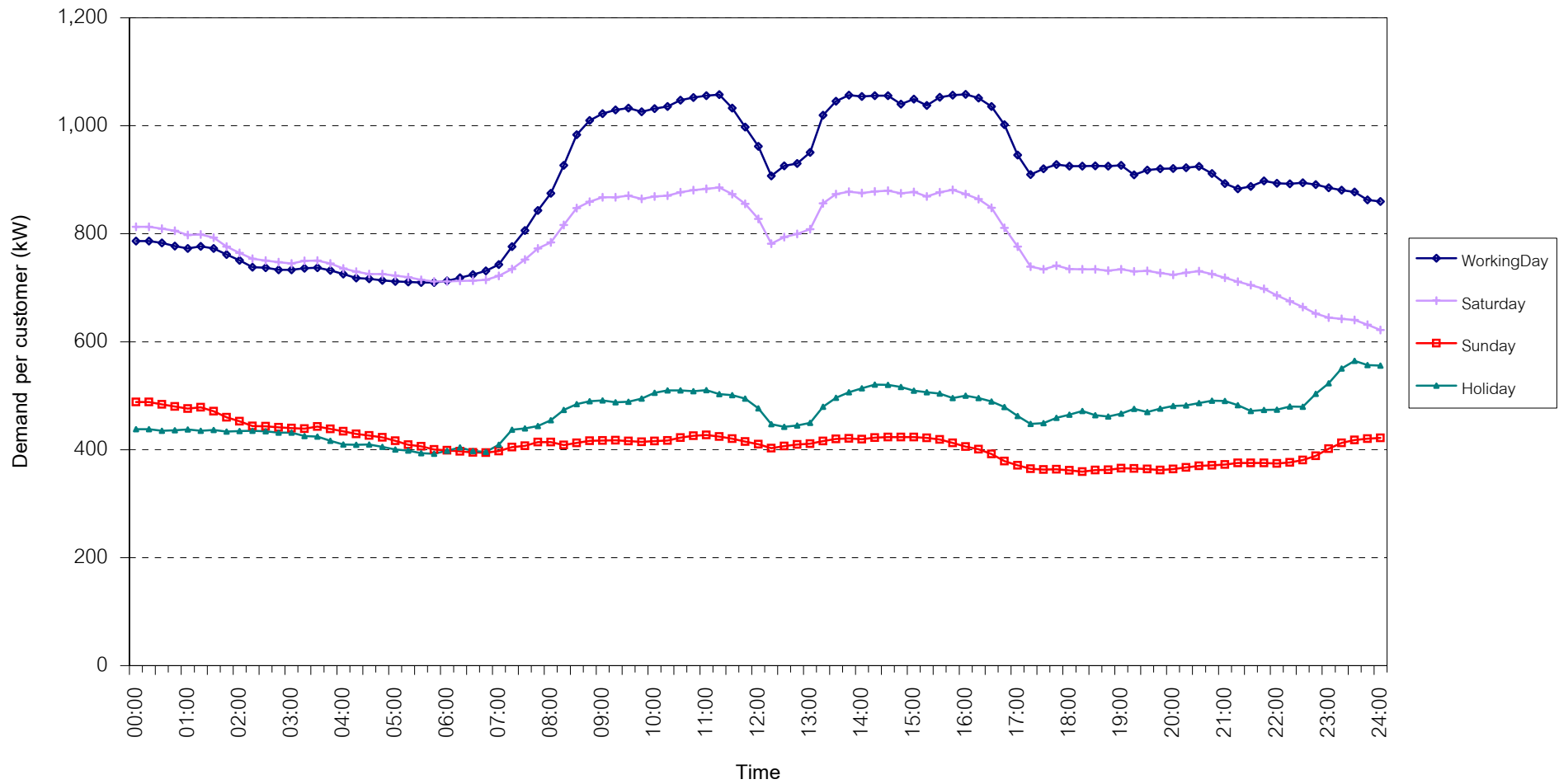
กราฟรูปที่ 12



TSIC 38 (Fabricated Metal Products) Load Profile

Date: 1 Feb, 2009 to 28 Feb, 2009

Number of sample customers = 61



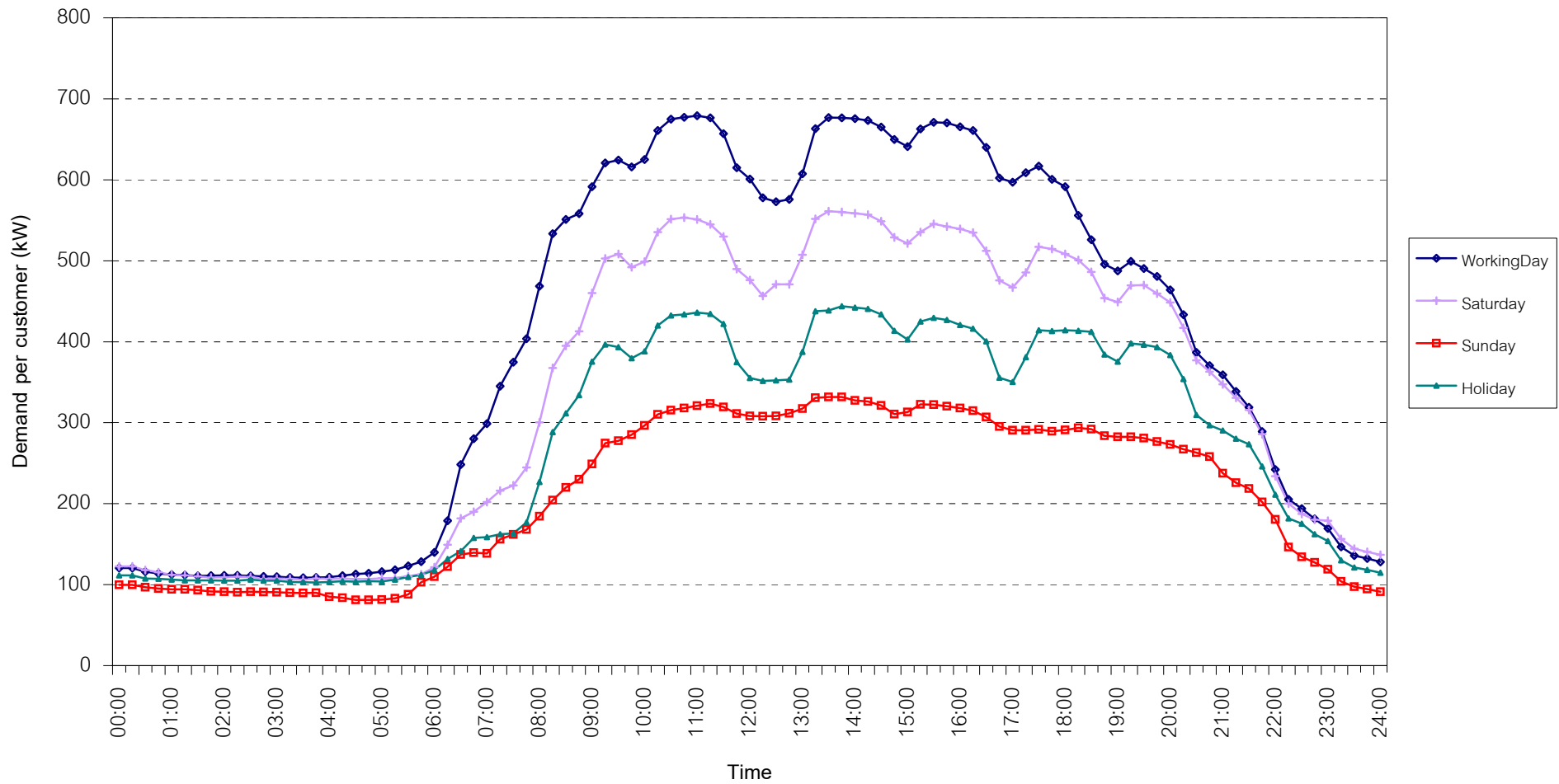
กราฟรูปที่ 13



TSIC 61 (Wholesale Trade) Load Profile

Date: 1 Feb, 2009 to 28 Feb, 2009

Number of sample customers = 8



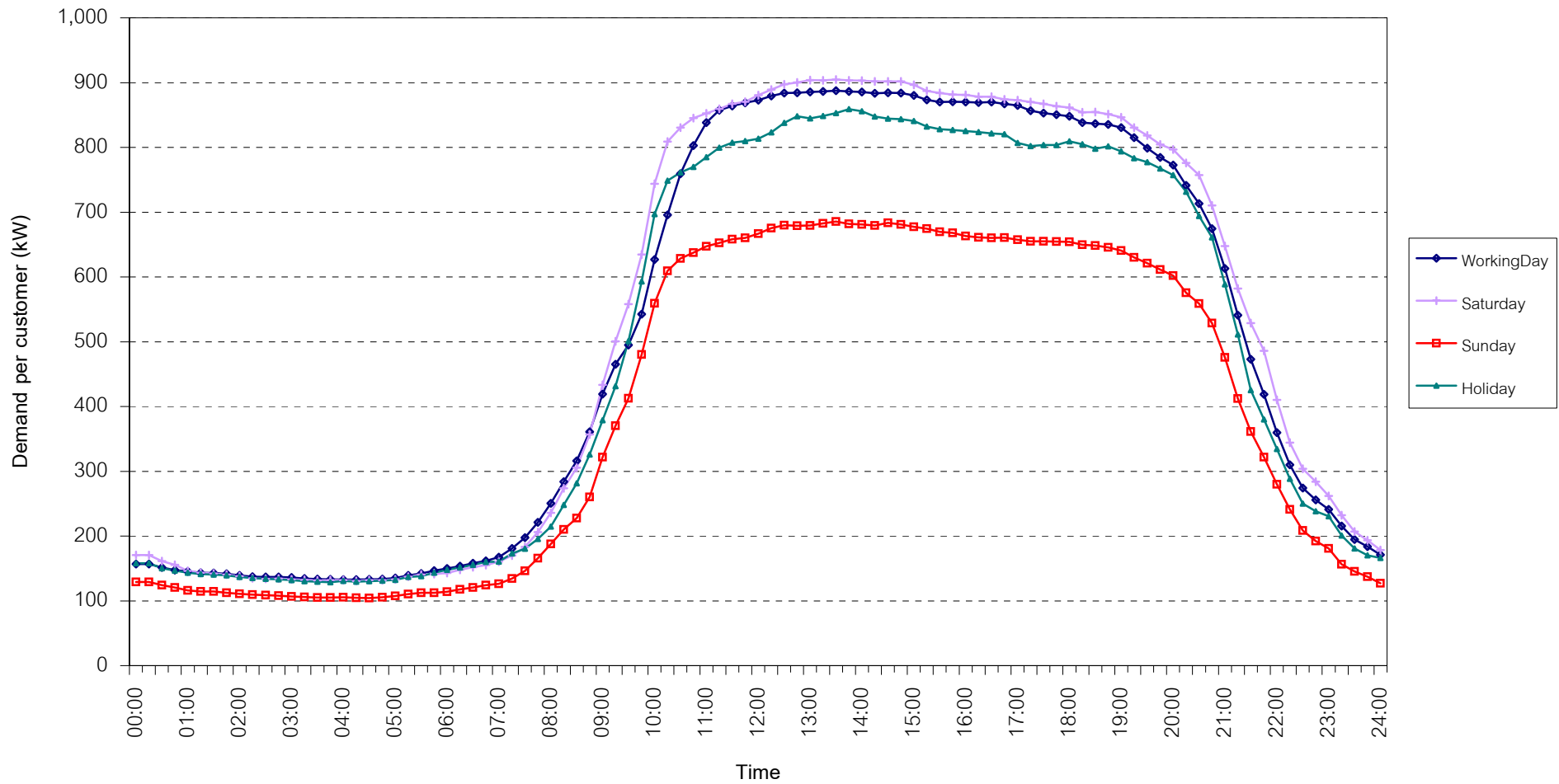
กราฟรูปที่ 14



TSIC 62 (Retail Trade) Load Profile

Date: 1 Feb, 2009 to 28 Feb, 2009

Number of sample customers = 73



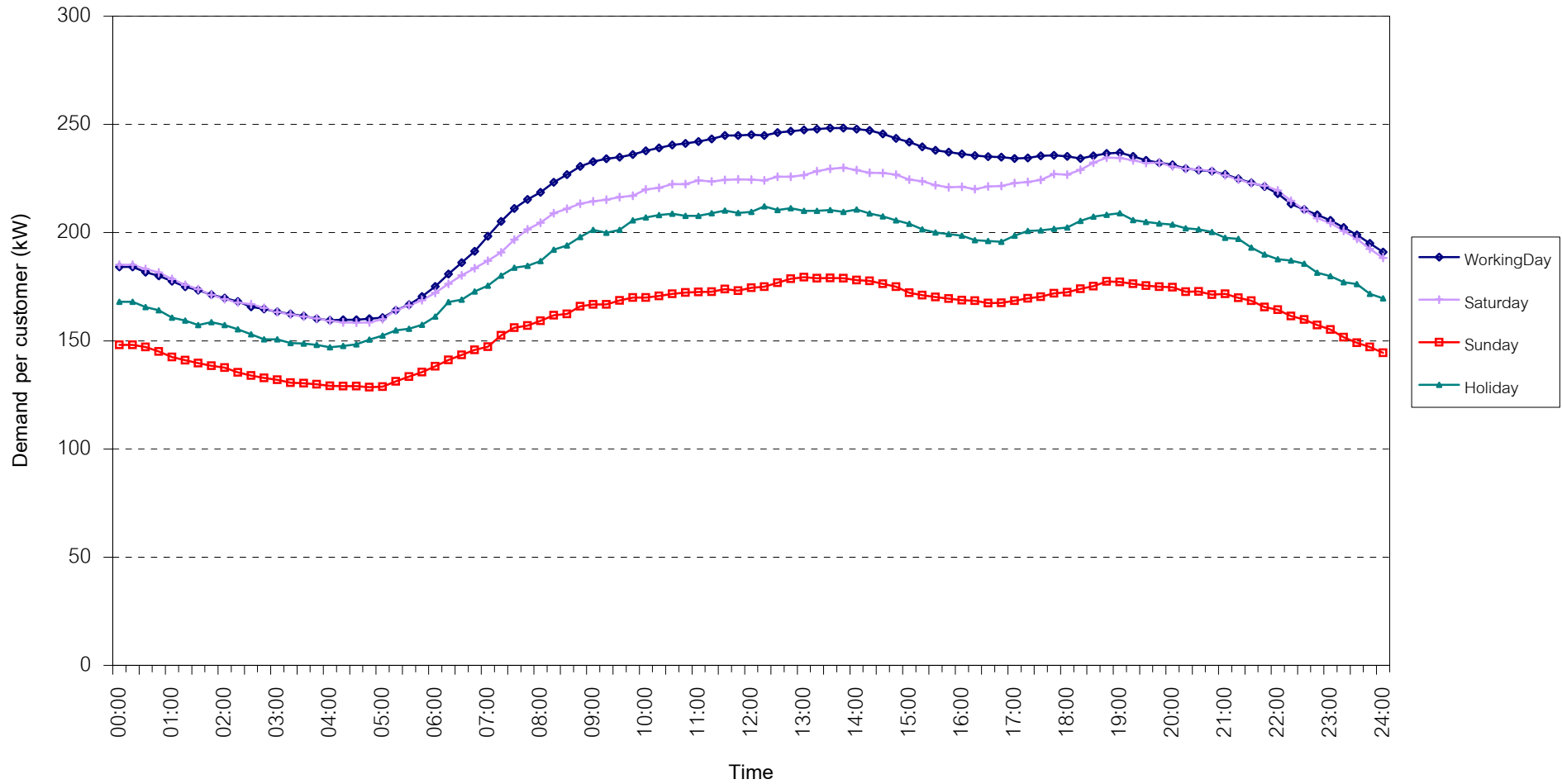
กราฟรูปที่ 15



TSIC 63 (Hotels and restaurants) Load Profile

Date: 1 Feb, 2009 to 28 Feb, 2009

Number of sample customers = 82



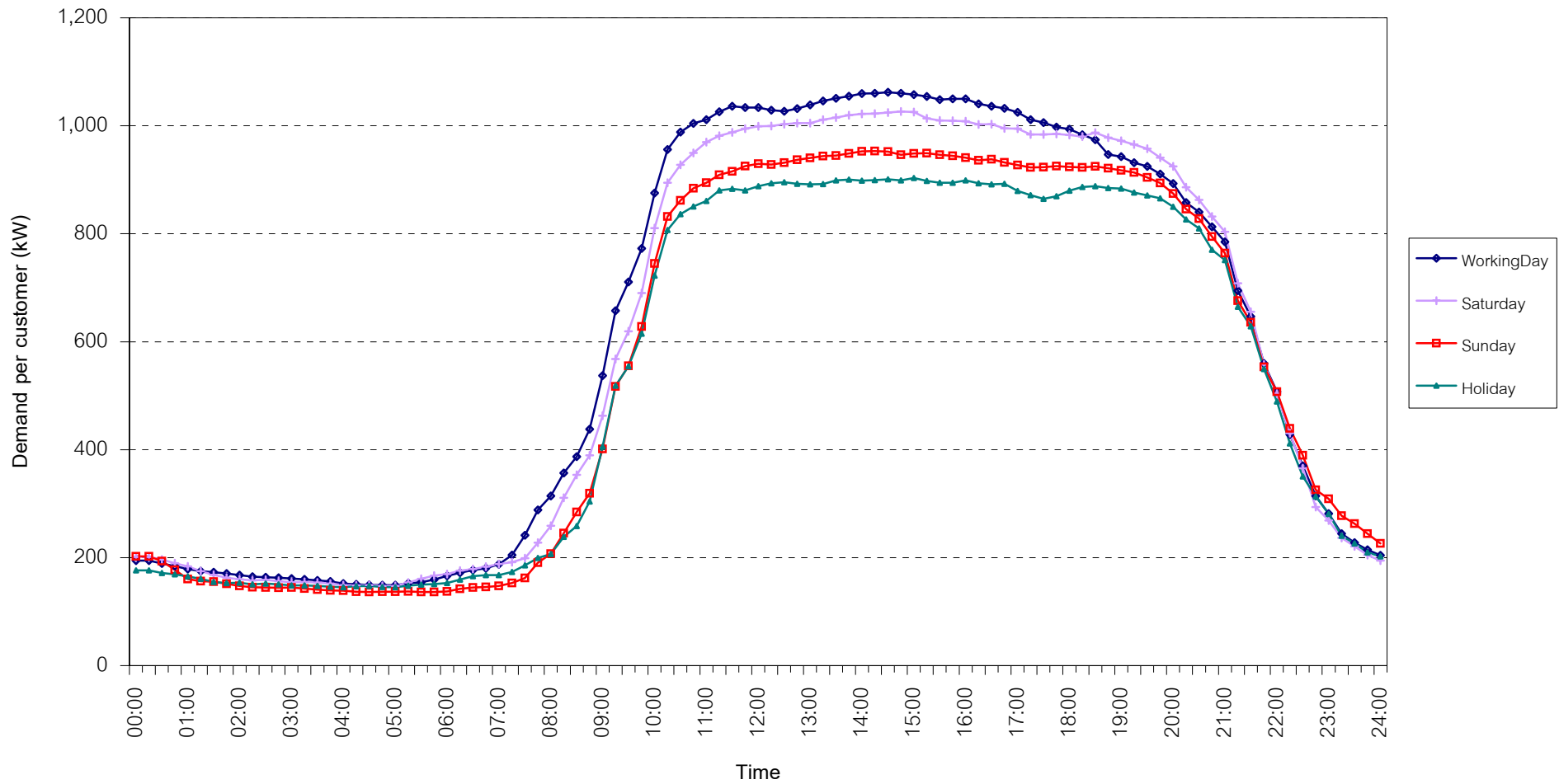
กราฟรูปที่ 16



TSIC 83 (Real Estate) Load Profile

Date: 1 Feb, 2009 to 28 Feb, 2009

Number of sample customers = 33



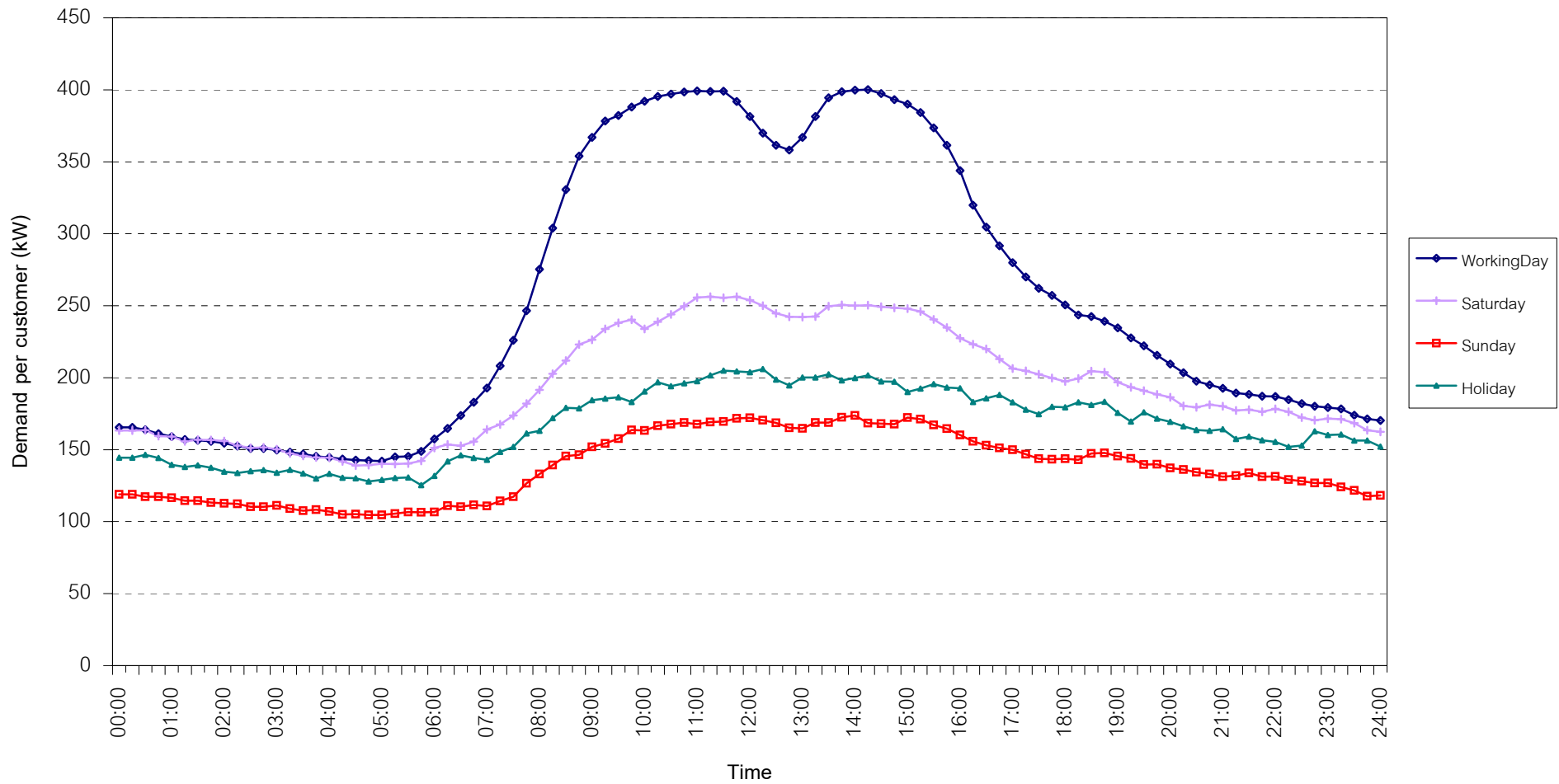
กราฟรูปที่ 17



TSIC 93 (Social Services) Load Profile

Date: 1 Feb, 2009 to 28 Feb, 2009

Number of sample customers = 21

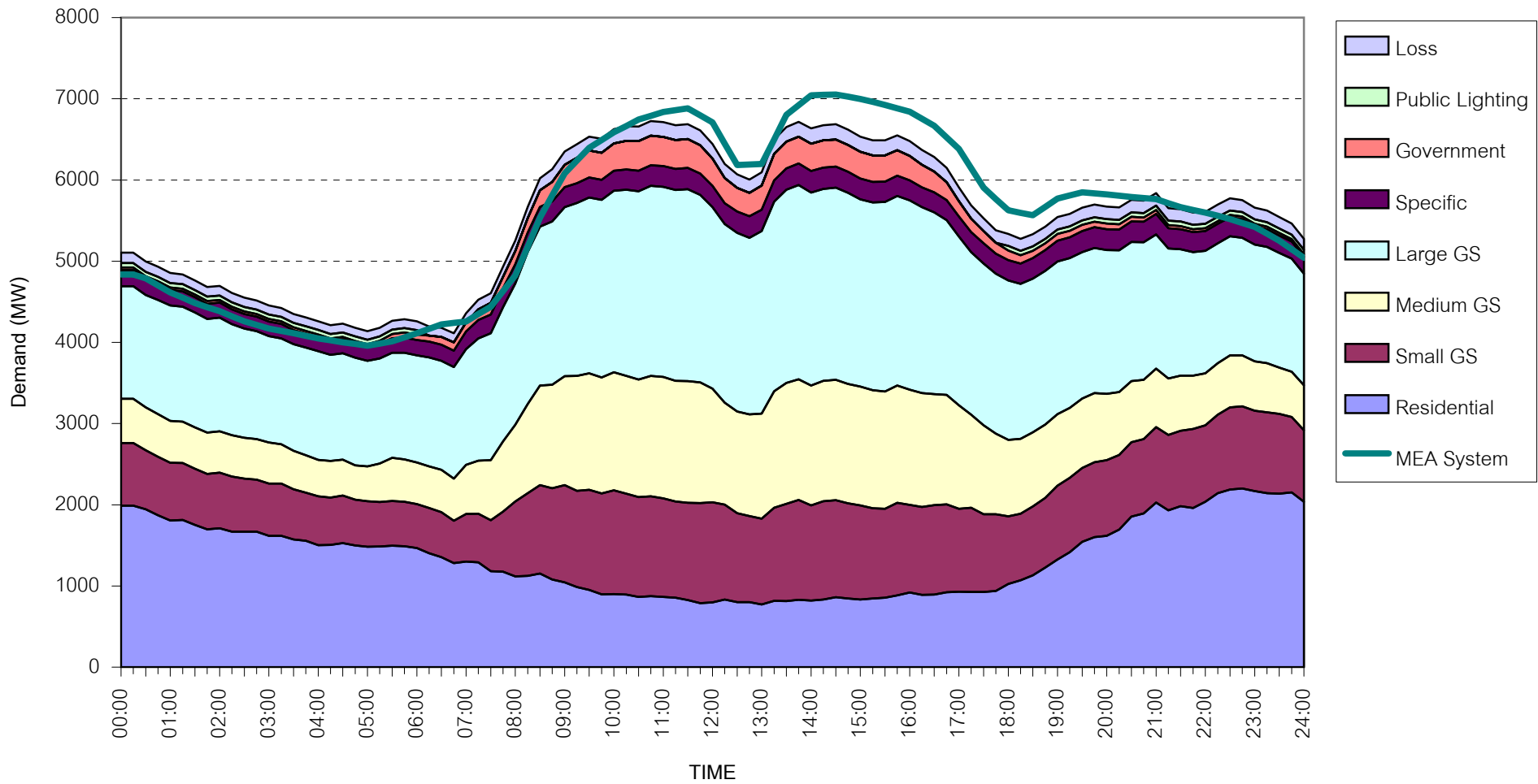


กราฟรูปที่ 18



MEA's System Load Profile

Peak Day 26 February, 2009 at 14:30



กราฟรูปที่ 19