

**ข้อมูลการศึกษาลักษณะการใช้ไฟฟ้า**

**เดือน พฤษภาคม 2563**

Table 1-1

COINCIDENT WITH LOAD RESEARCH SYSTEM'S PEAK ON May 22,2020 time 16:00 8,224.79 MW  
 ( MEA SYSTEM'S PEAK ON May 22,2020 time 14:30 8,517.69 MW )

CLASS	Number of Customers	Kilowatt hours	Coincident Peak (MEA System Peak at time 14:30 )		Coincident Peak (Load Research System Peak at time 16:00)		Sector Diversified Demand		
			MW	Contribution (%)	MW	Contribution (%)	Max MW.	Date	Time
Residential	3,573,629	1,757,389,610	2,428.73	29.94	2,678.96	32.57	4,066.45	6 May 20	22:15
Small General Service	340,456	531,275,245	1,015.80	12.52	1,014.29	12.33	1,036.39	7 May 20	15:15
Medium General Service	23,940	663,053,030	1,507.78	18.59	1,481.86	18.02	1,592.58	7 May 20	13:30
Large General Service	2,479	1,295,718,063	2,621.29	32.31	2,521.35	30.66	2,864.91	21 May 20	11:15
Specific Business	3,500	120,192,466	162.86	2.01	163.11	1.98	214.77	7 May 20	22:30
Non Profit Organization	323	11,806,339	17.87	0.22	15.62	0.19	27.83	16 May 20	12:30
Public Lighting	-	43,078,027	0.00	0.00	0.00	0.00	114.35	-	-
Loss	-	198,269,692	357.69	4.41	349.59	4.25	357.69	22 May 20	14:30
TOTAL	3,944,327	4,620,782,472	8,112.02	100.00	8,224.79	100.00	8,224.79	22 May 20	16:00

Table 1-2

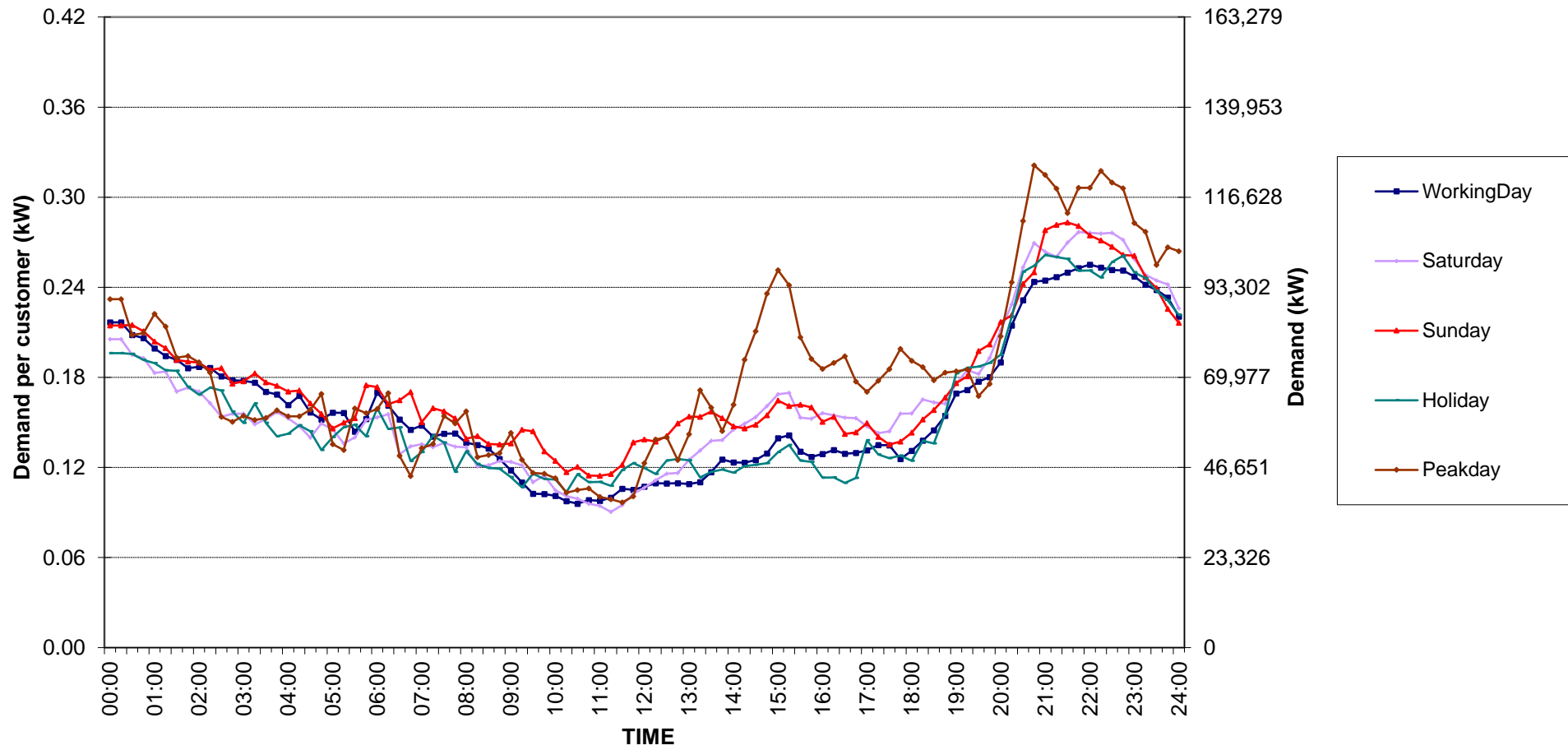
Number of sample customers on May, 2020

CLASS	Number of sample customers (Target)	Number of sample customers (Collected)
Residential	171	171
Small General Service	258	258
Medium General Service	165	165
Large General Service	284	284
Specific Business	74	74
Non-profit Organization	50	50
TOTAL	1,002	1,002

Residential ( Energy Consumption less than 150 kWh per month )

Date: 1 May, 2020 to 31 May, 2020

Number of sample customers = 52

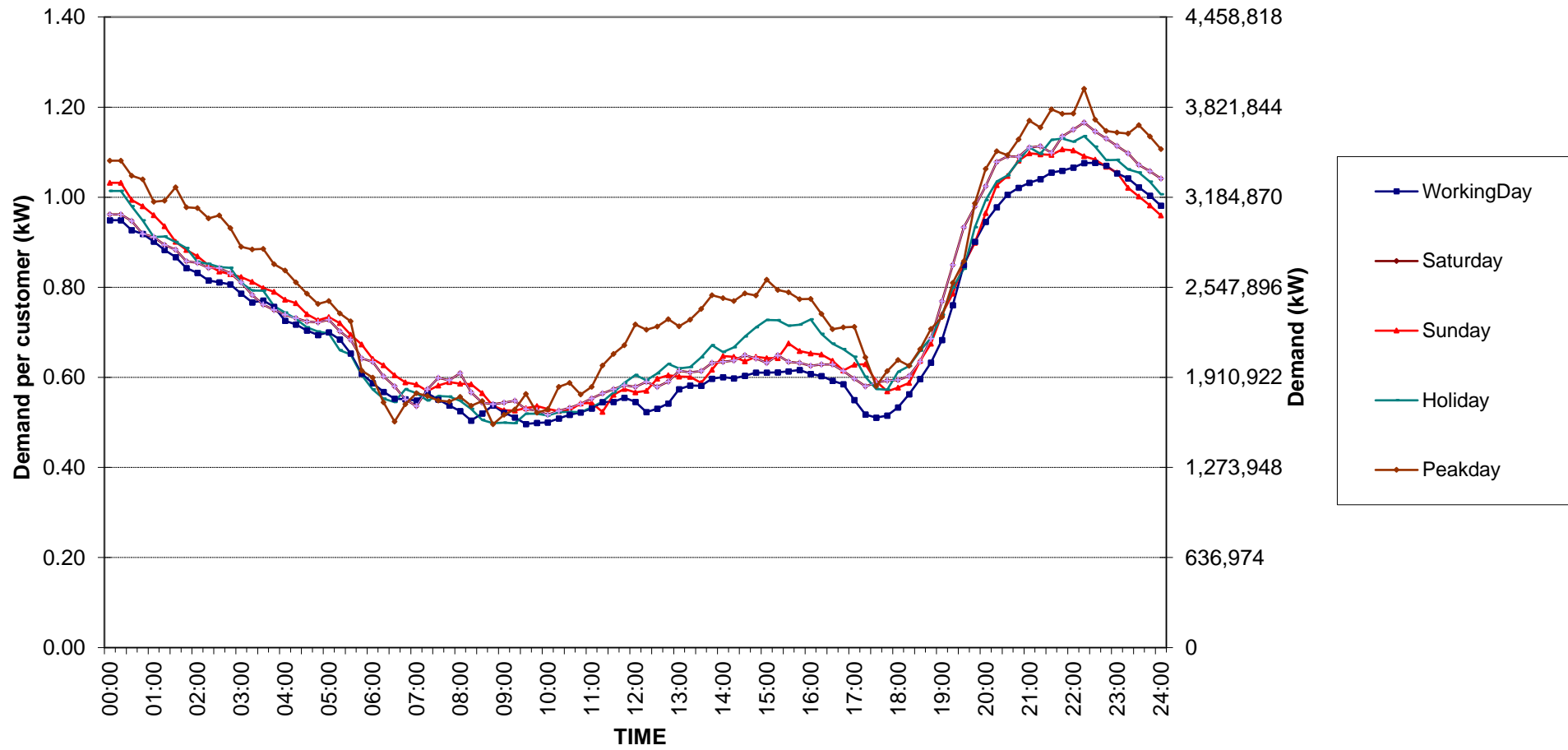


กราฟรูปที่ 1

Residential ( Energy Consumption more than 150 kWh per month )

Date: 1 May, 2020 to 31 May, 2020

Number of sample customers = 119

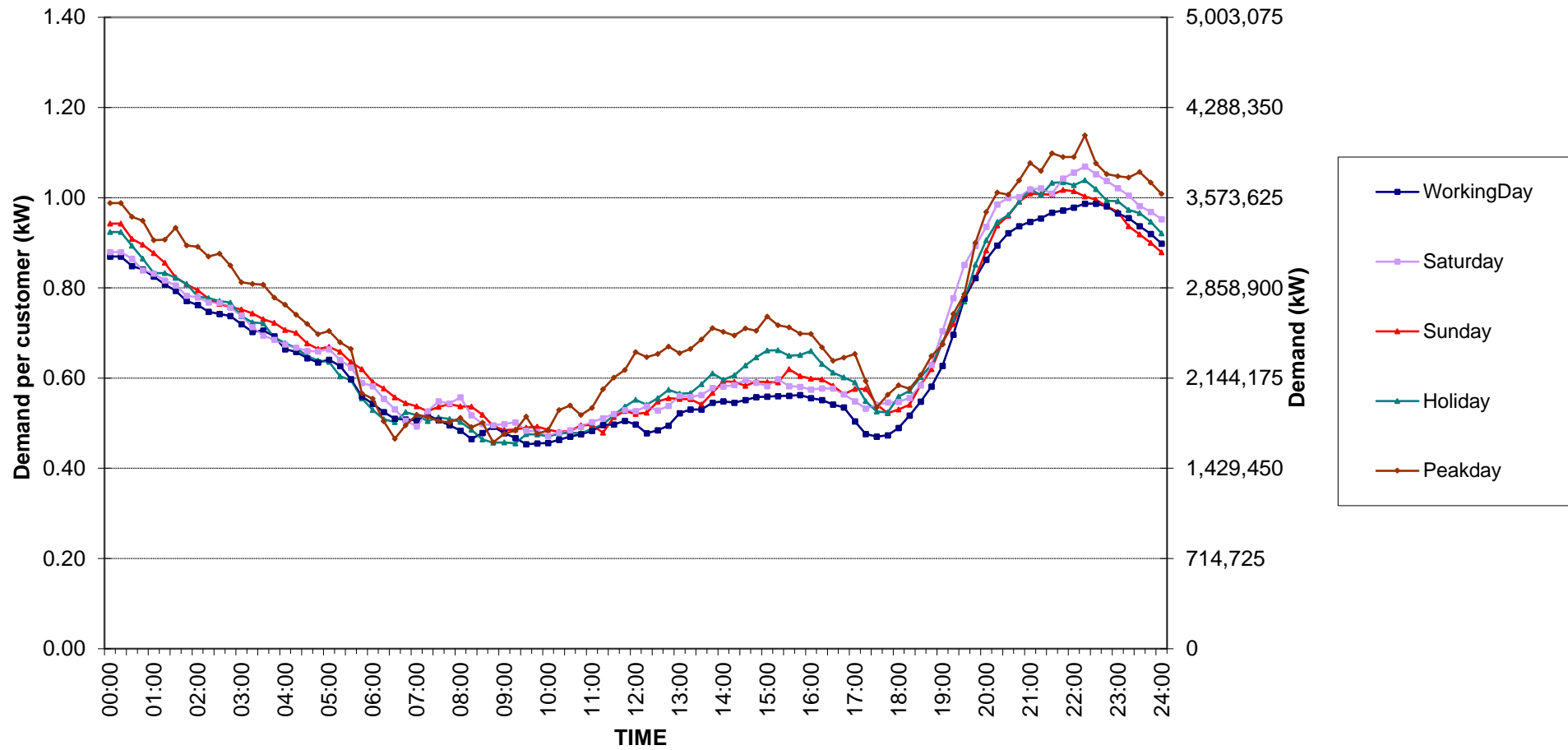


กราฟรูปที่ 2

### Residential Load Profile

Date: 1 May, 2020 to 31 May, 2020

Number of sample customers = 171

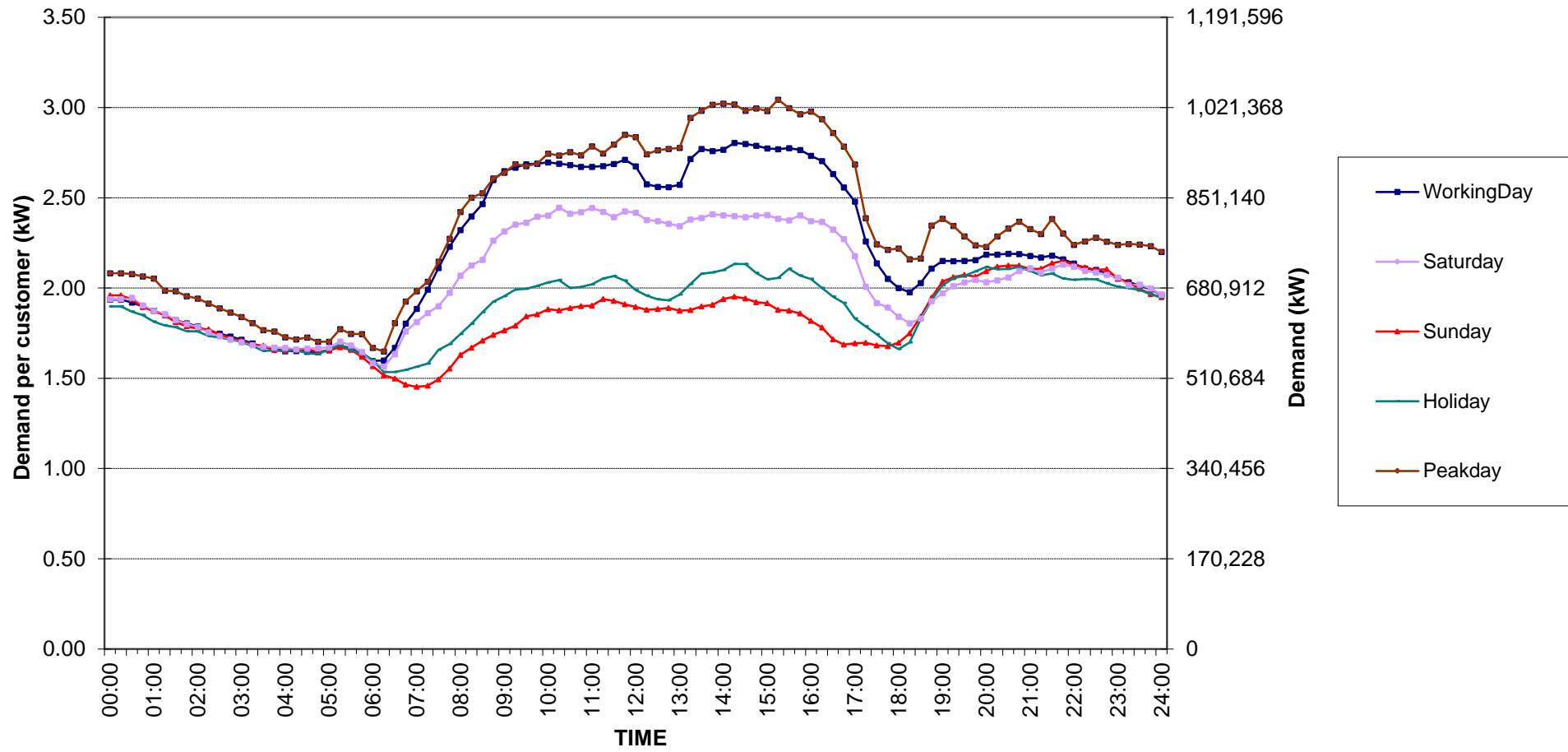


กราฟรูปที่ 3

### Small General Services Load Profile

Date: 1 May, 2020 to 31 May, 2020

Number of sample customers = 258

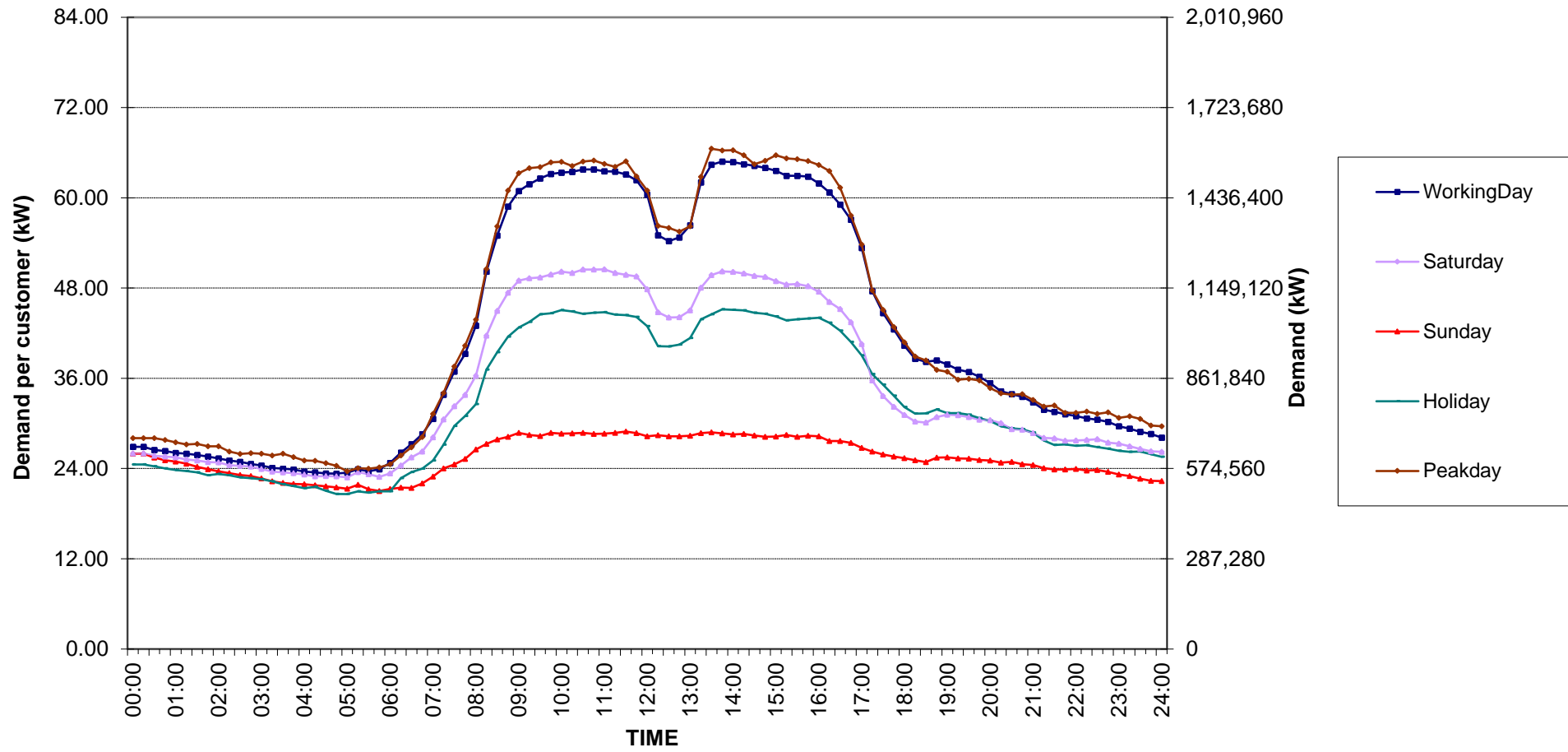


กราฟรูปที่ 4

### Medium General Services Load Profile

Date: 1 May, 2020 to 31 May, 2020

Number of sample customers = 165



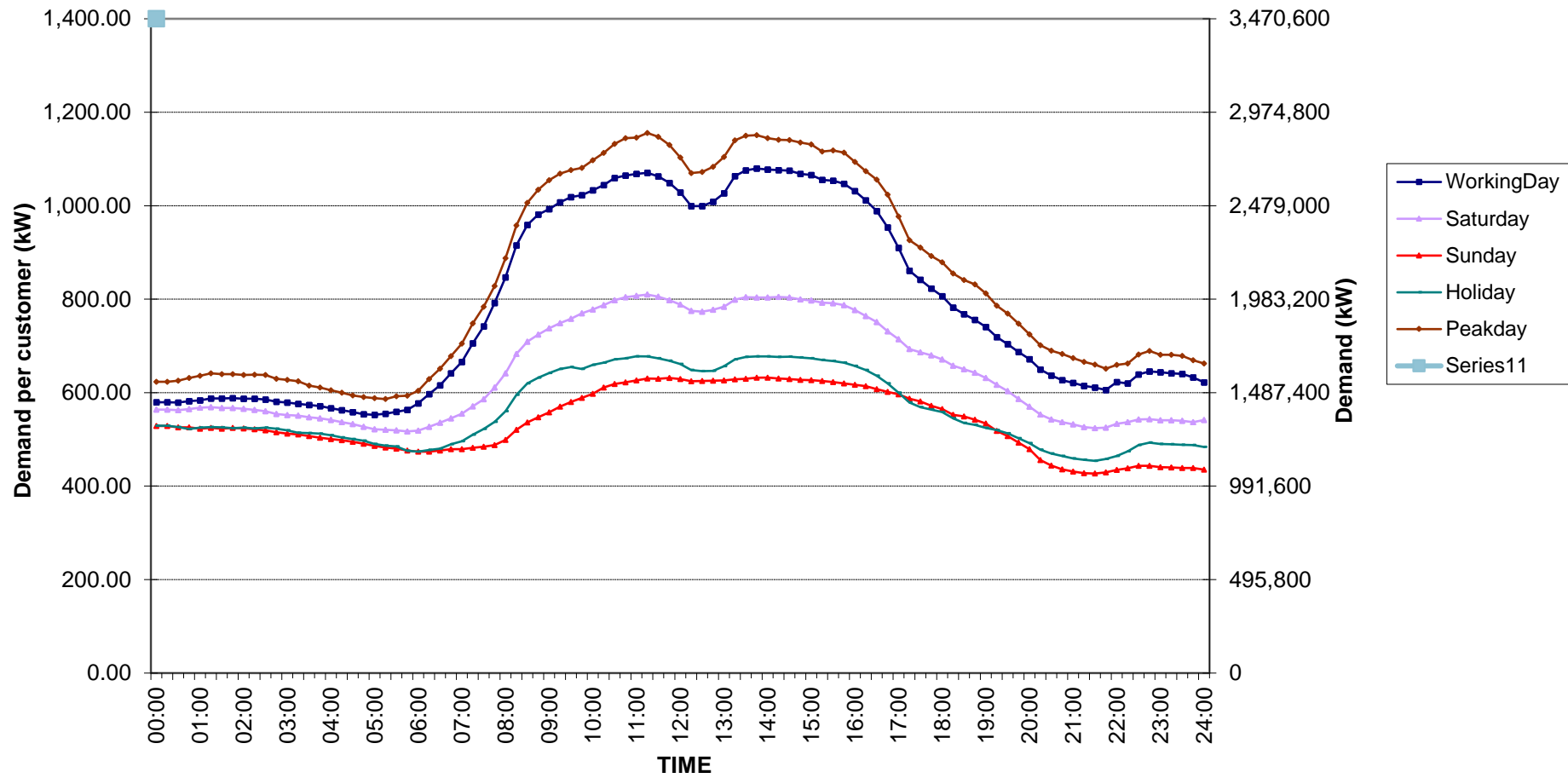
กราฟรูปที่ 5



# Large General Services Load Profile

Date: 1 May, 2020 to 31 May, 2020

Number of sample customers = 284

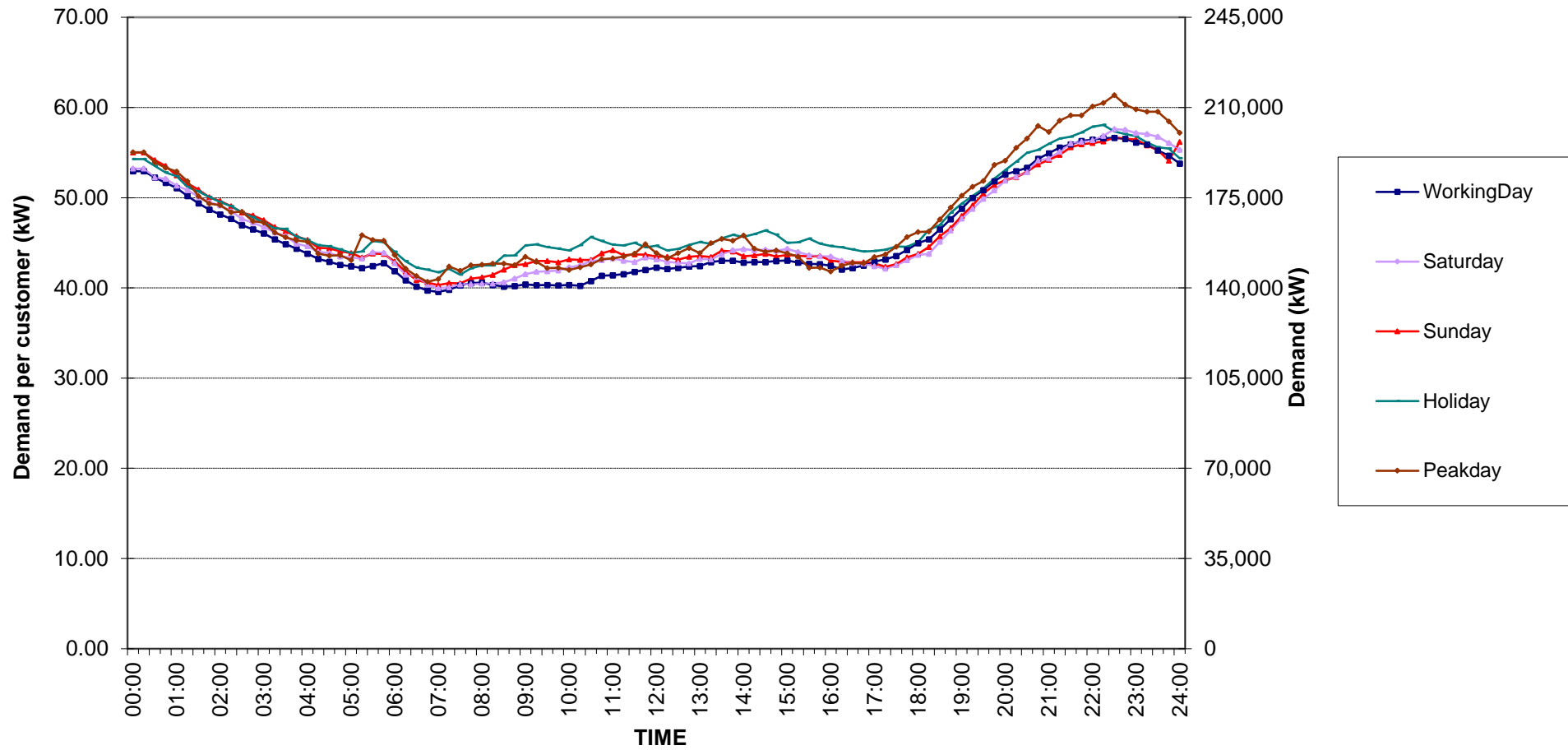


กราฟรูปที่ 6

### Specific Business Load Profile

Date: 1 May, 2020 to 31 May, 2020

Number of sample customers = 74

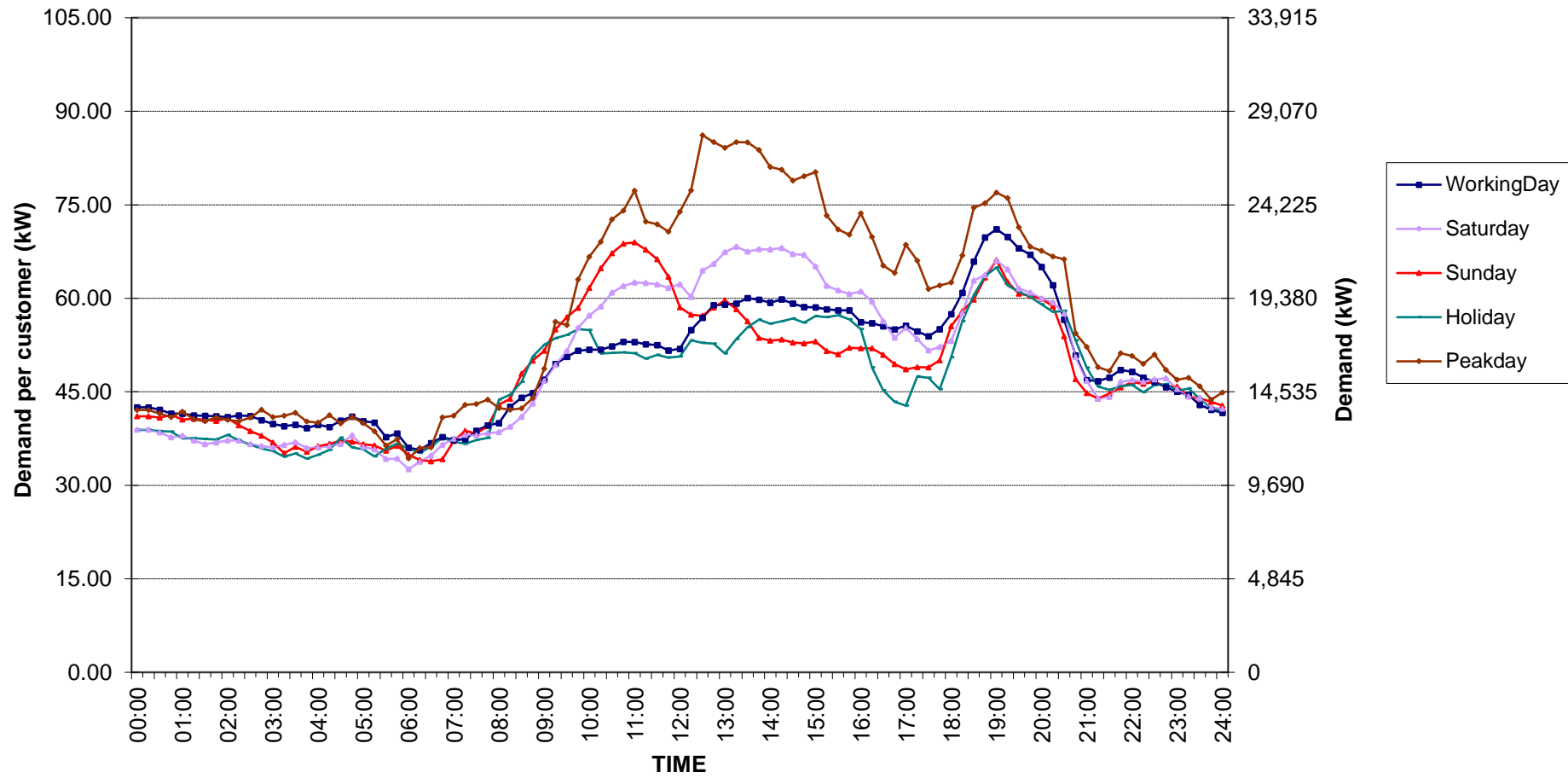


กราฟรูปที่ 7

# Non-profit organizations Load Profile

Date: 1 May, 2020 to 31 May, 2020

Number of sample customers = 50

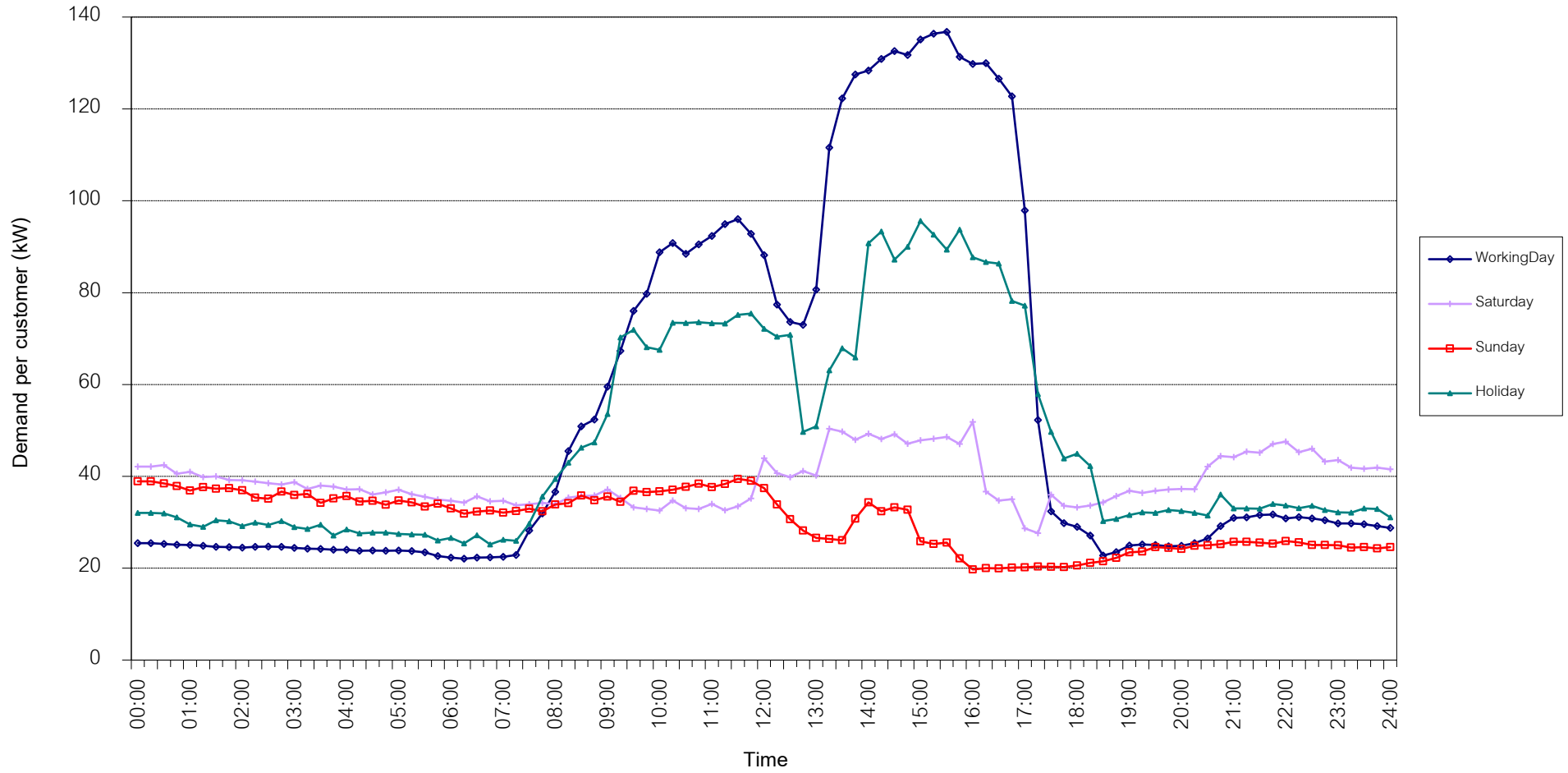


กราฟรูปที่ 8

TSIC 31 (Food Processing) Load Profile

Date: 1 May, 2020 to 31 May, 2020

Number of sample customers = 32

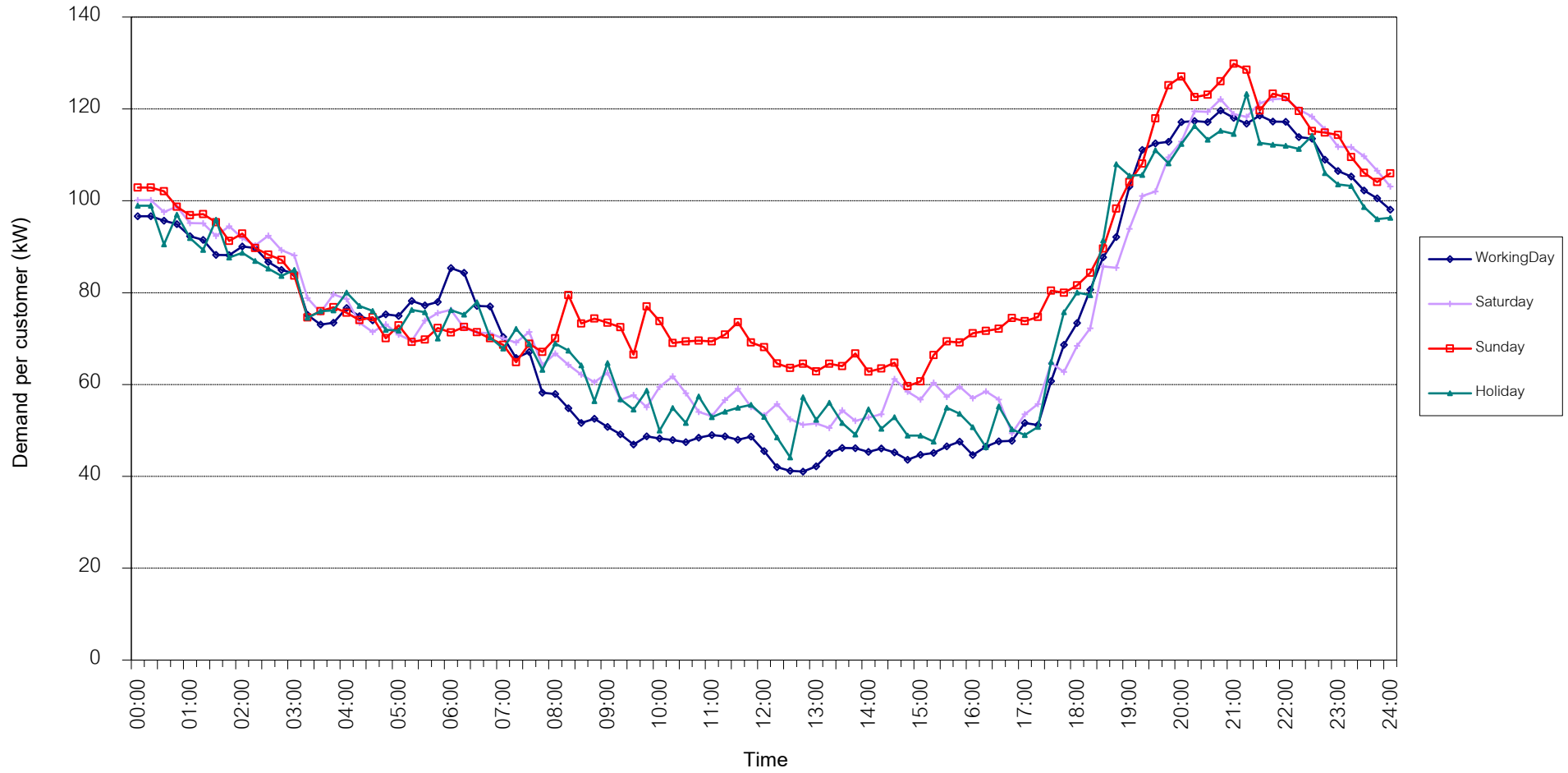


กราฟรูปที่ 9

TSIC 32 (Textiles) Load Profile

Date: 1 May, 2020 to 31 May, 2020

Number of sample customers = 67

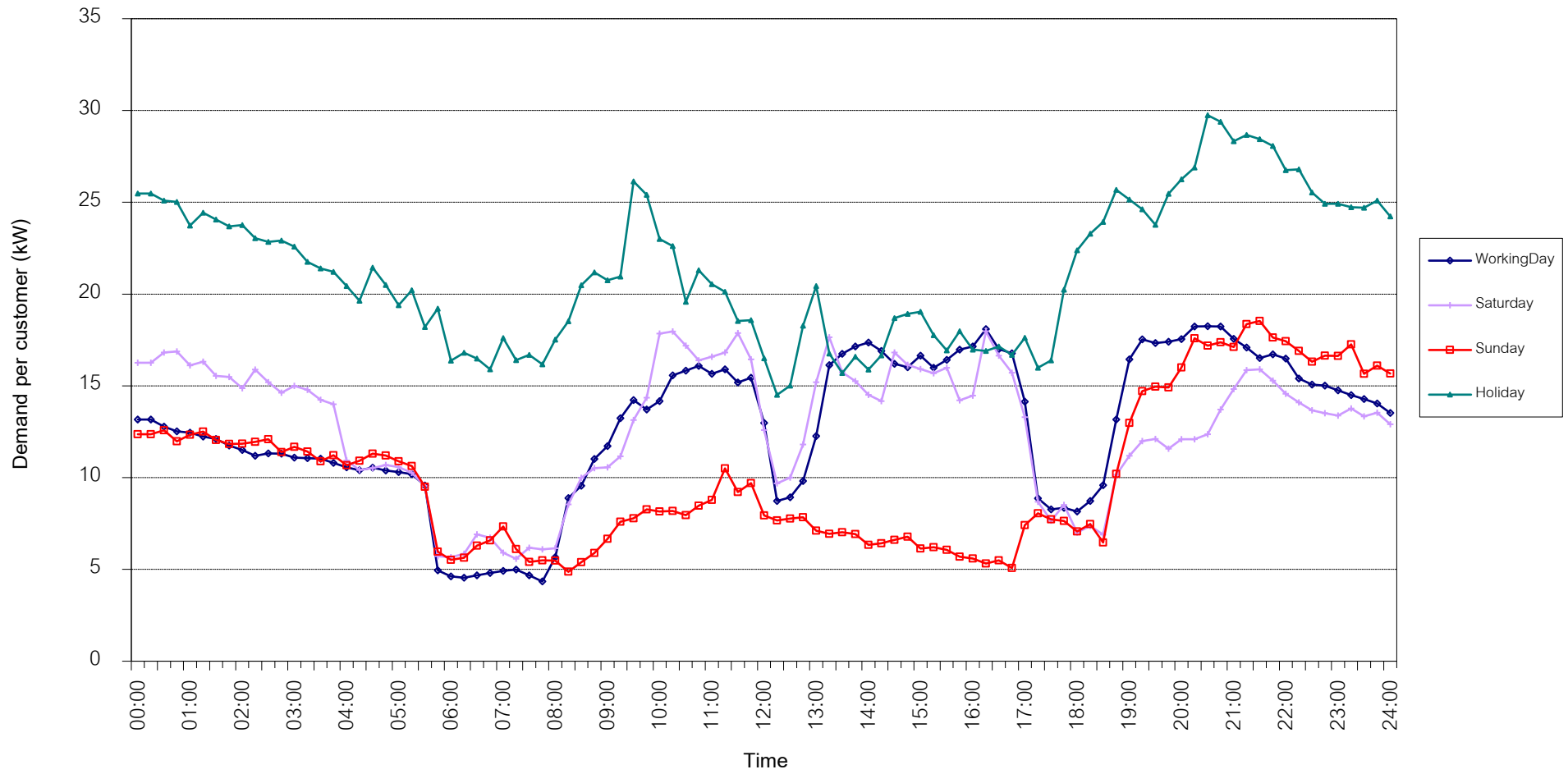


กราฟรูปที่ 10

TSIC 34 (Paper & Printing) Load Profile

Date: 1 May, 2020 to 31 May, 2020

Number of sample customers = 12

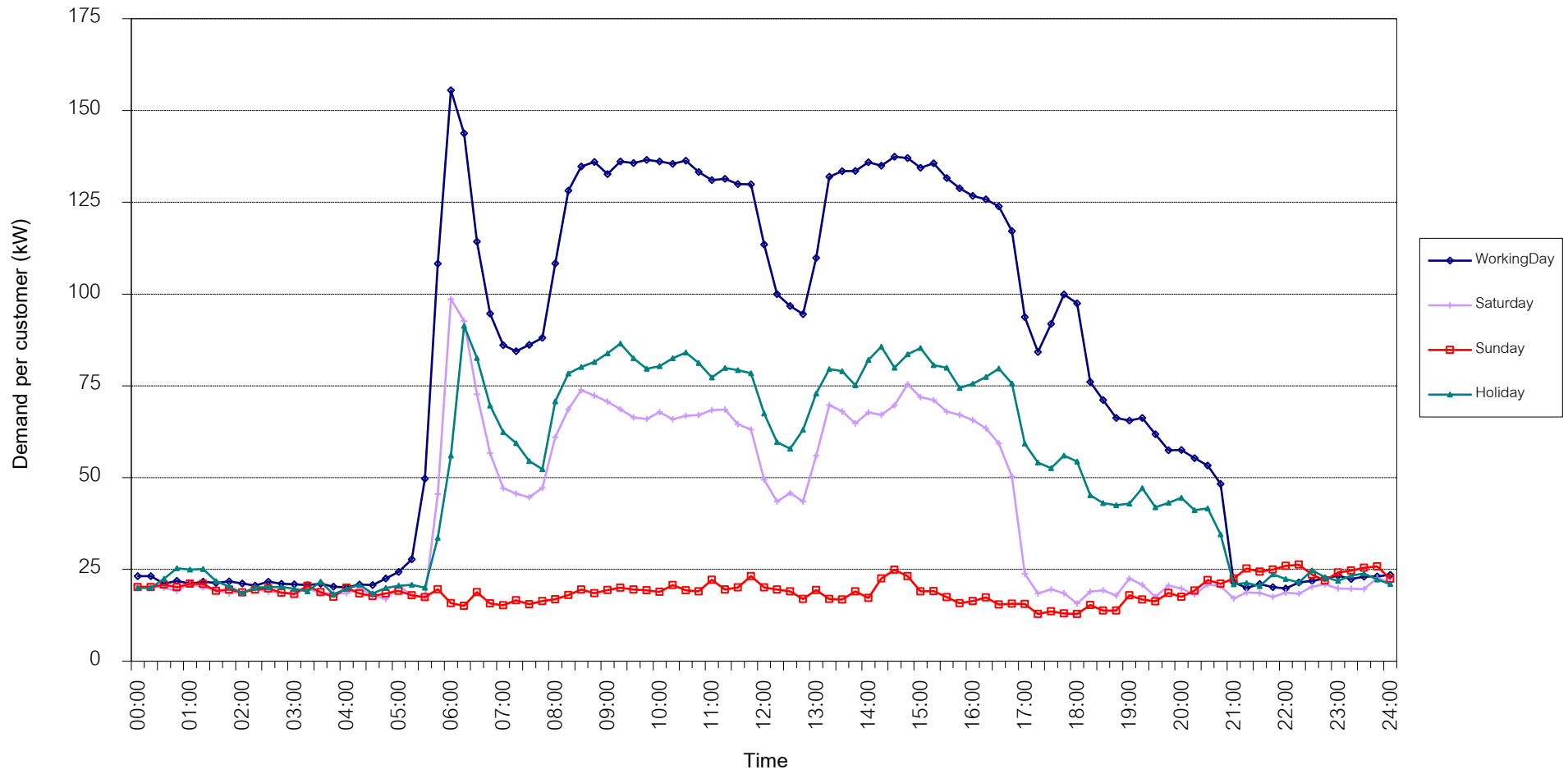


กราฟรูปที่ 11

TSIC 35 (Chemical & Petroleum) Load Profile

Date: 1 May, 2020 to 31 May, 2020

Number of sample customers = 75

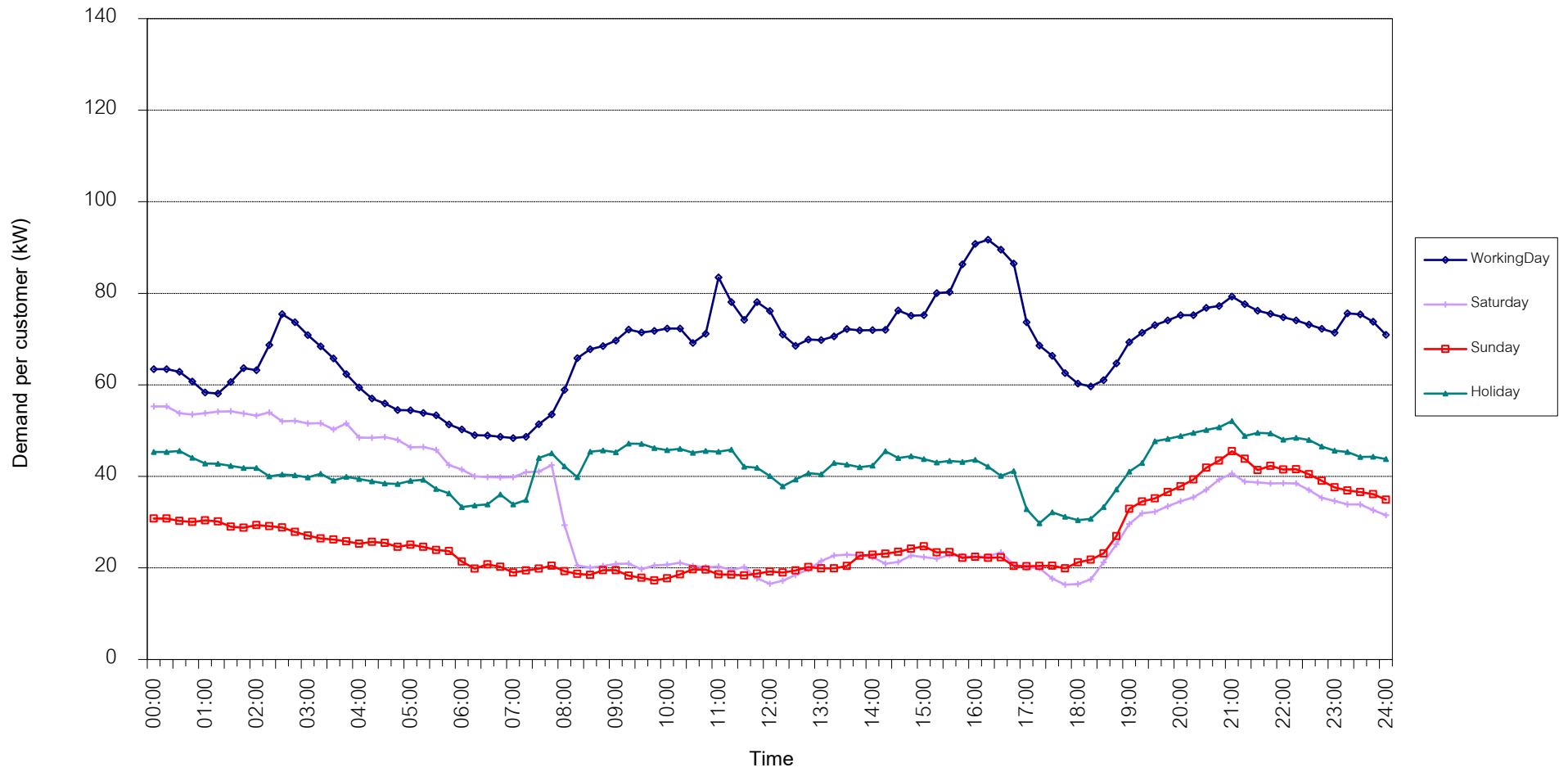


กราฟรูปที่ 12

TSIC 38 (Fabricated Metal Products) Load Profile

Date: 1 May, 2020 to 31 May, 2020

Number of sample customers = 62



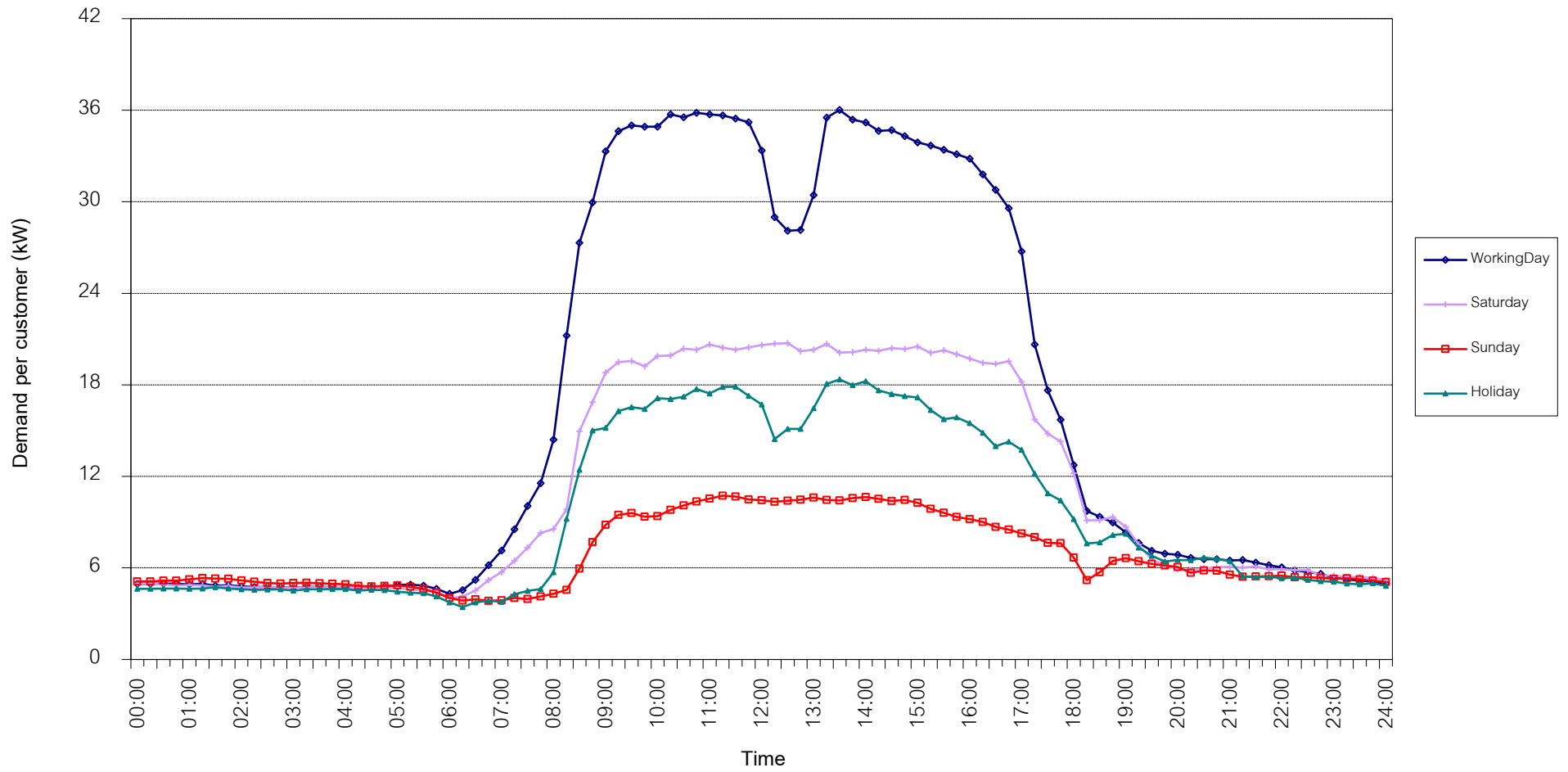
กราฟรูปที่ 13



TSIC 61 (Wholesale Trade) Load Profile

Date: 1 May, 2020 to 31 May, 2020

Number of sample customers = 48

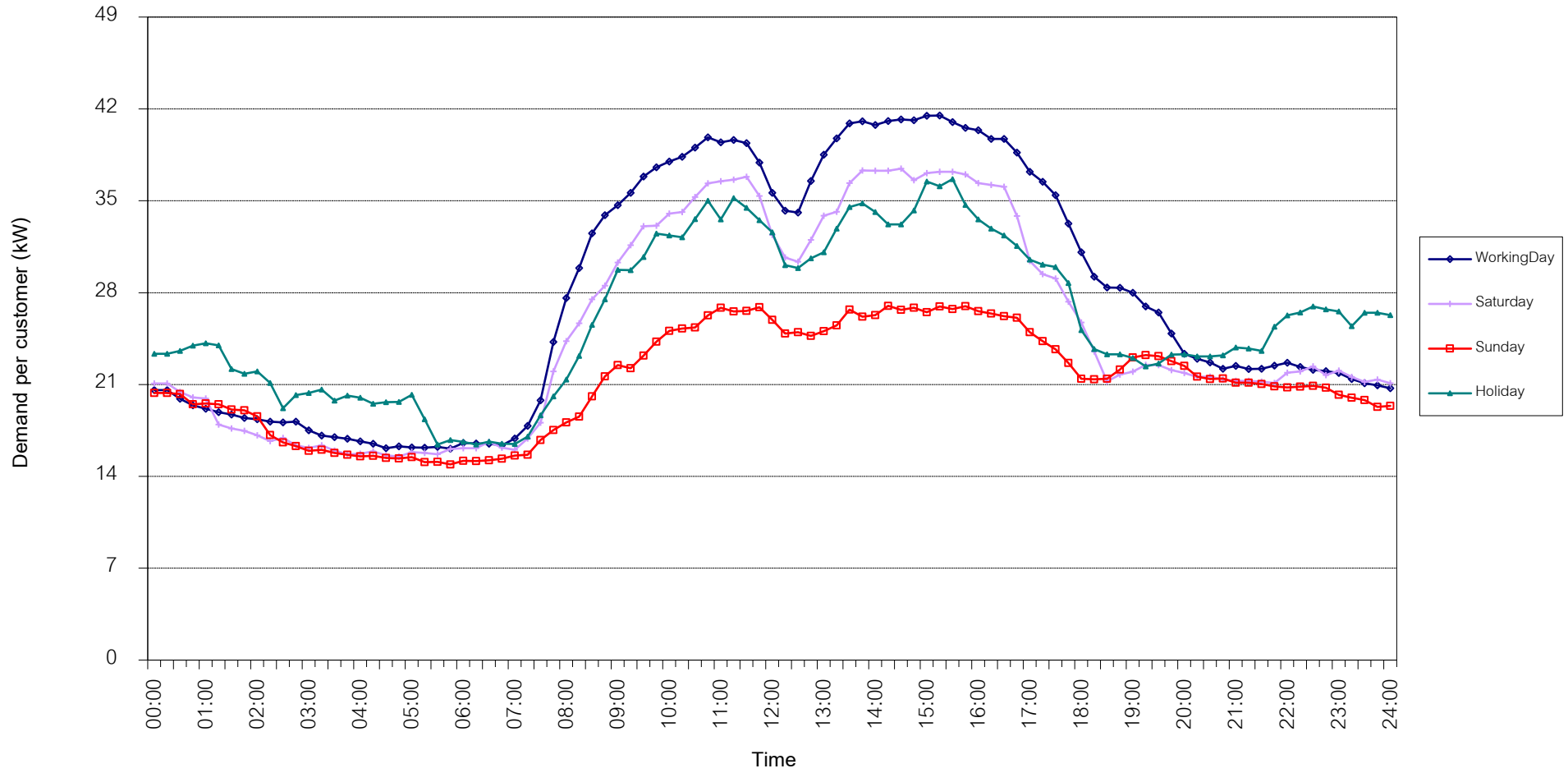


กราฟรูปที่ 14

TSIC 62 (Retail Trade) Load Profile

Date: 1 May, 2020 to 31 May, 2020

Number of sample customers = 93

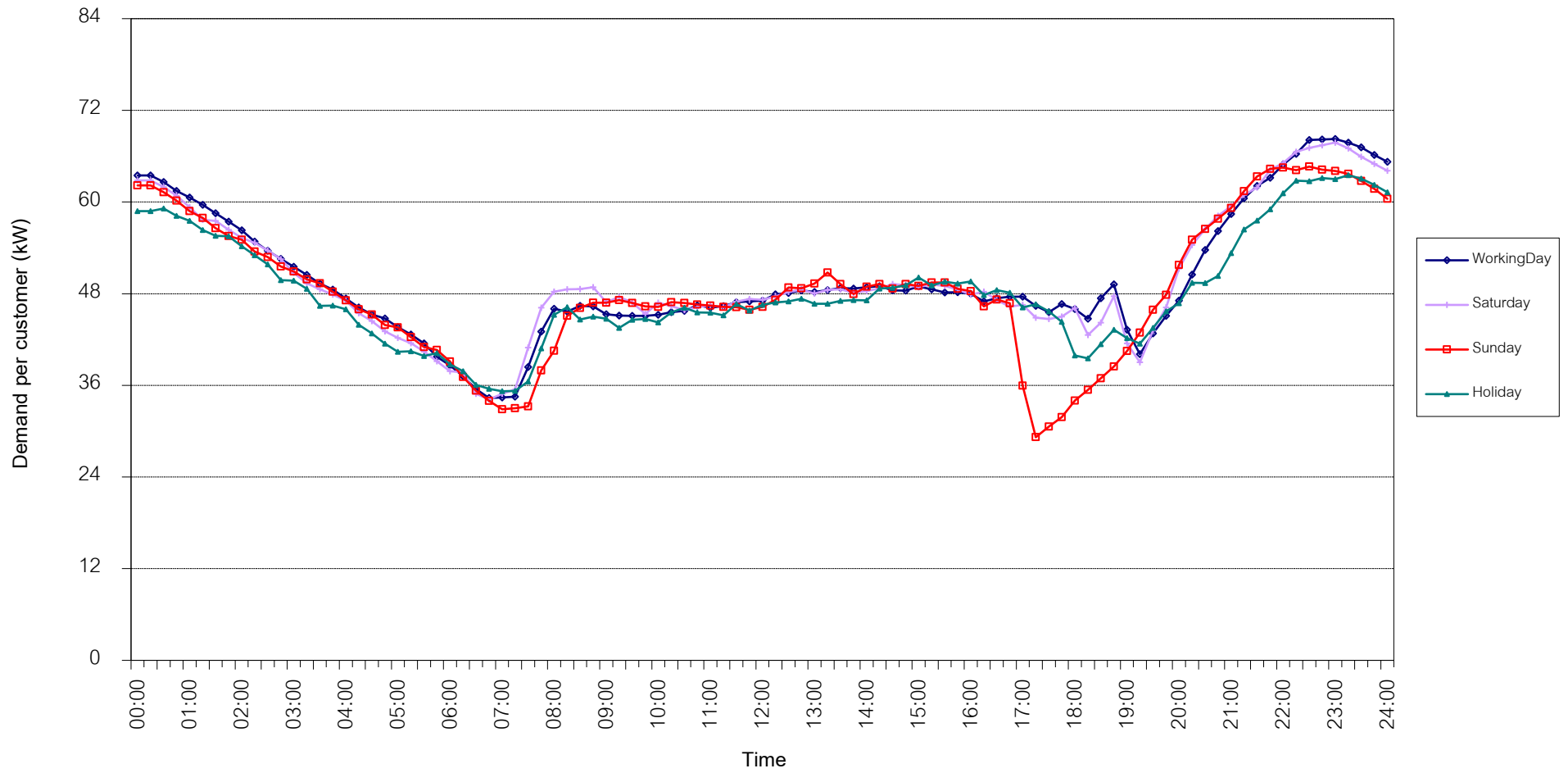


กราฟรูปที่ 15

TSIC 63 (Hotels and restaurants) Load Profile

Date: 1 May, 2020 to 31 May, 2020

Number of sample customers = 117

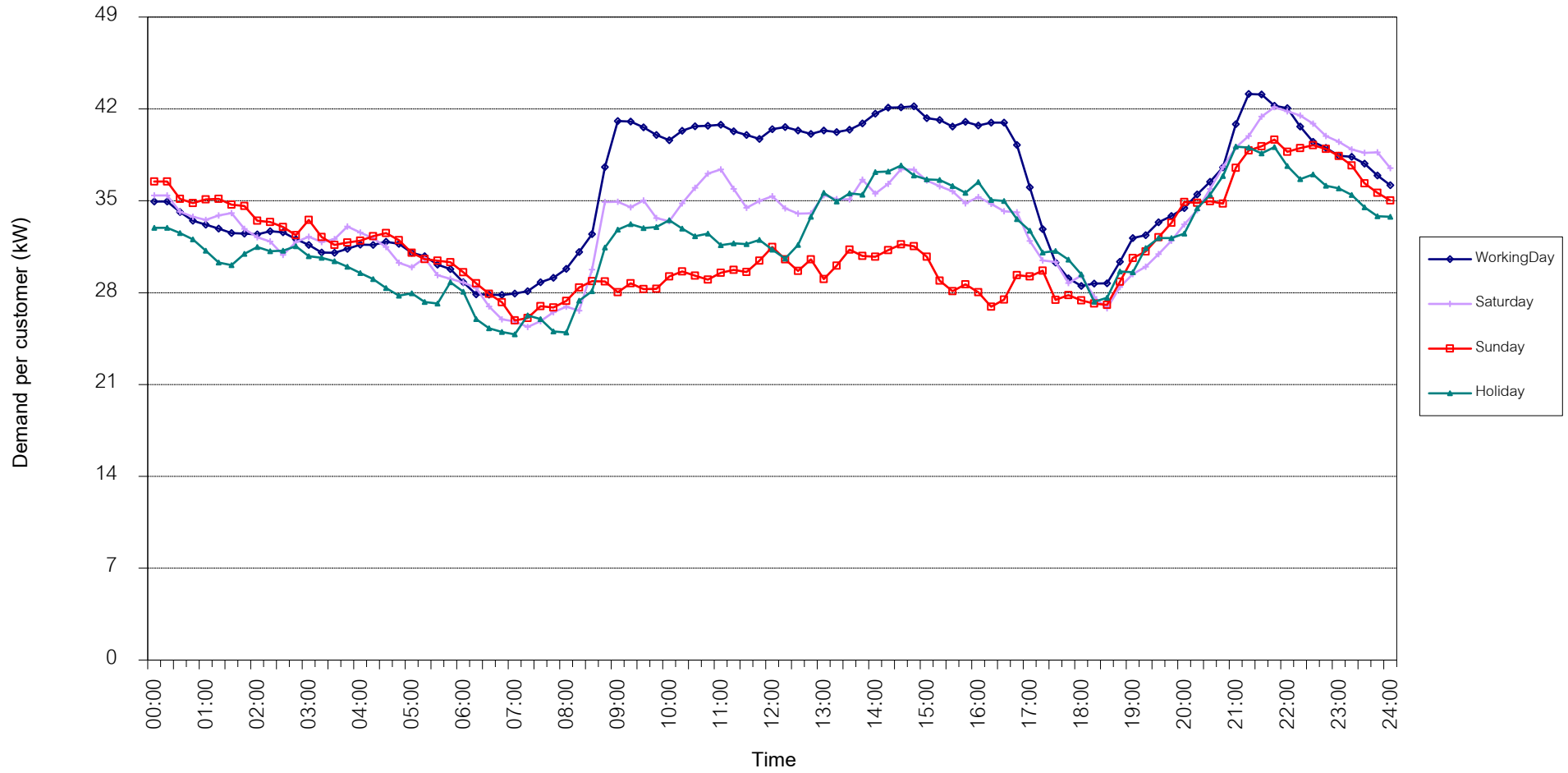


กราฟรูปที่ 16

TSIC 83 (Real Estate) Load Profile

Date: 1 May, 2020 to 31 May, 2020

Number of sample customers = 47

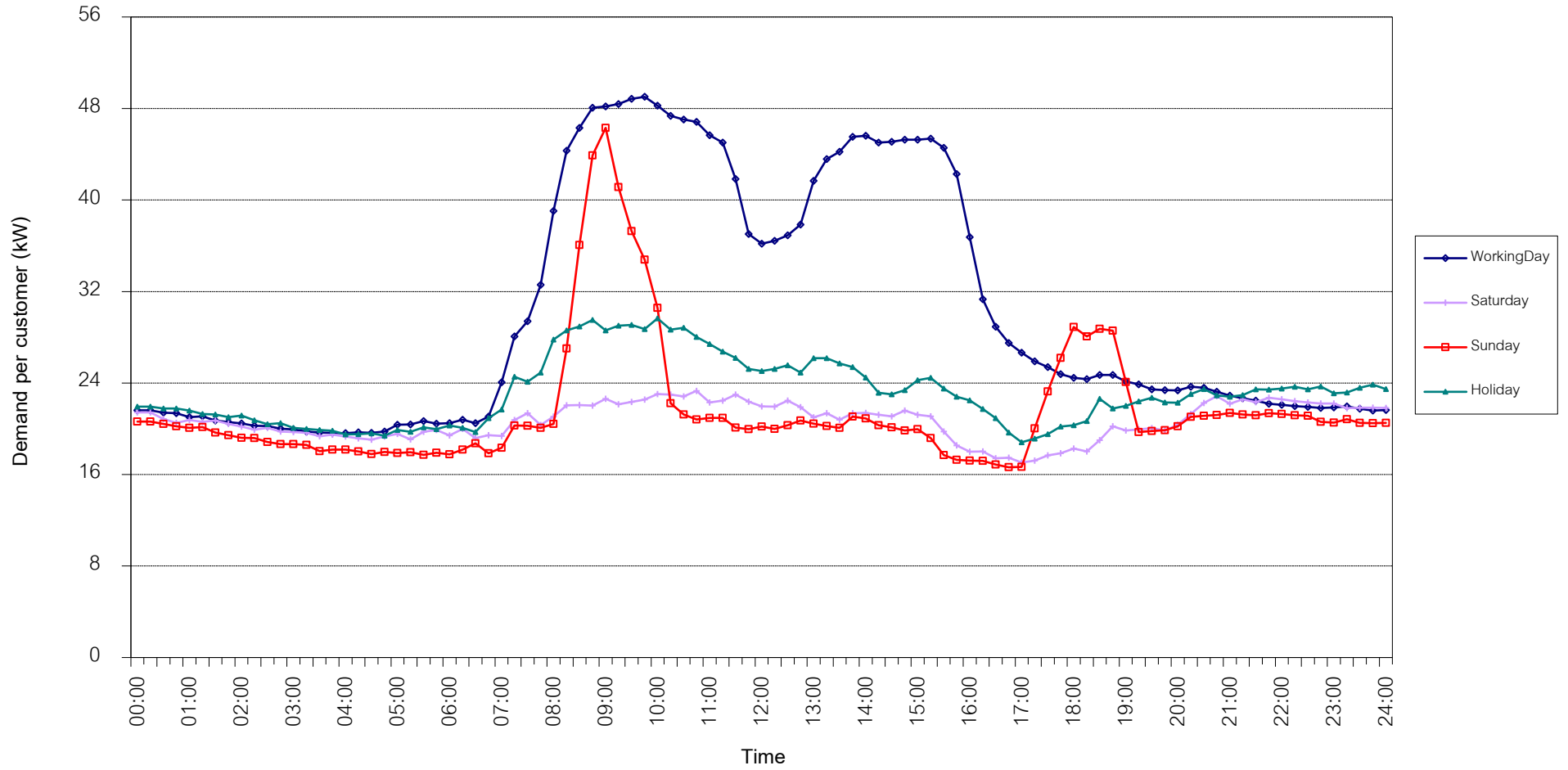


กราฟรูปที่ 17

TSIC 93 (Social Services) Load Profile

Date: 1 May, 2020 to 31 May, 2020

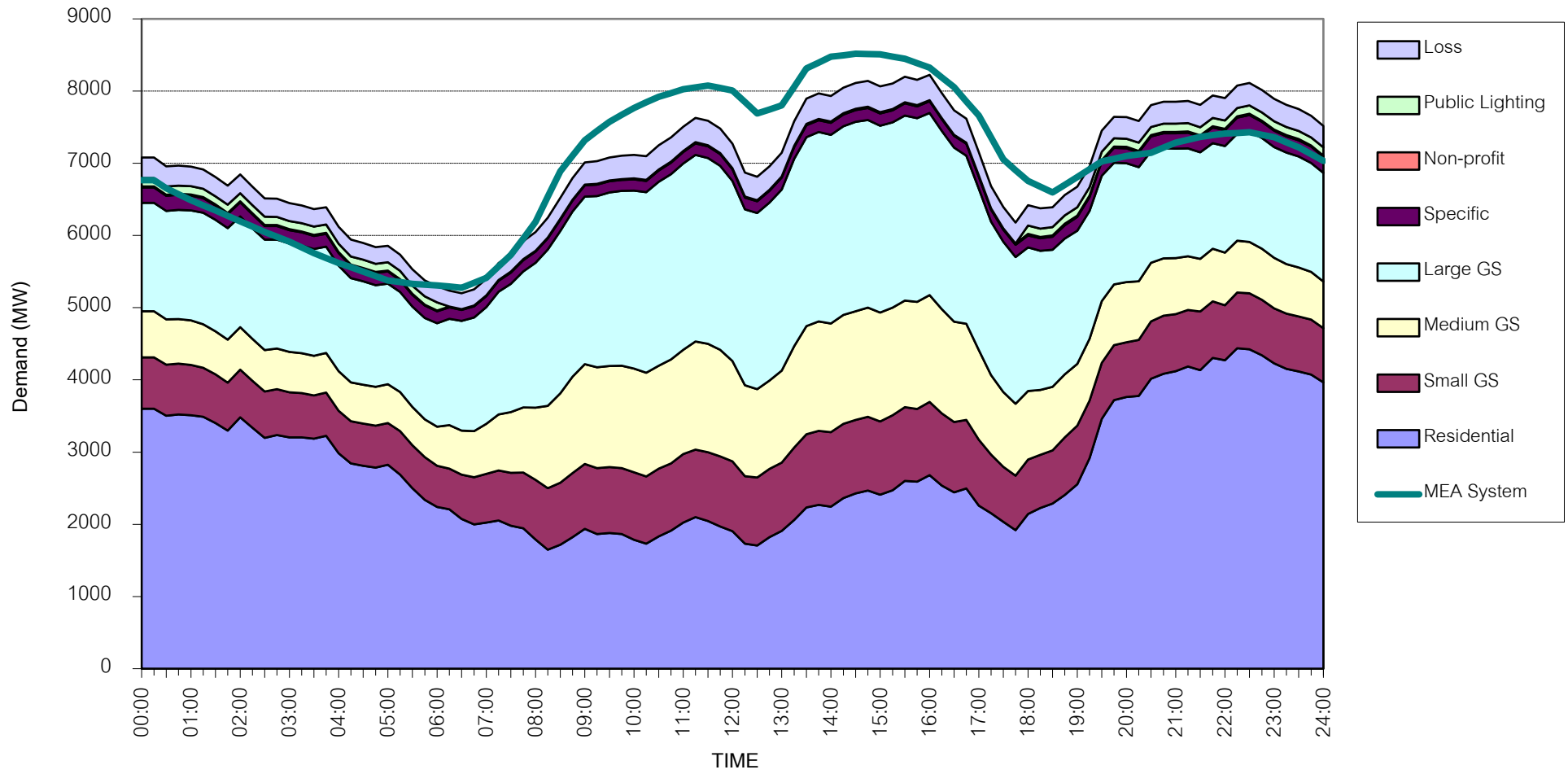
Number of sample customers = 27



กราฟรูปที่ 18

# MEA's System Load Profile

Peak Day 22 May, 2020 at 14:30



กราฟรูปที่ 19