

**ข้อมูลการศึกษาลักษณะการใช้ไฟฟ้า**

**เดือน เมษายน 2563**

Table 1-1

COINCIDENT WITH LOAD RESEARCH SYSTEM'S PEAK ON April 1,2020 time 14:00 7,663.94 MW  
 ( MEA SYSTEM'S PEAK ON April 1,2020 time 14:30 7,998.83 MW )

CLASS	Number of Customers	Kilowatt hours	Coincident Peak (MEA System Peak at time 14:30 )		Coincident Peak (Load Research System Peak at time 14:00)		Sector Diversified Demand		
			MW	Contribution (%)	MW	Contribution (%)	Max MW.	Date	Time
Residential	3,387,019	1,454,700,032	2,112.56	27.73	2,187.46	28.54	3,446.14	21 Apr 20	22:15
Small General Service	513,756	676,678,487	1,507.45	19.79	1,427.32	18.62	1,601.15	3 Apr 20	11:15
Medium General Service	23,961	611,474,332	1,390.29	18.25	1,384.66	18.07	1,426.51	30 Apr 20	10:30
Large General Service	2,475	1,177,919,128	2,051.86	26.93	2,104.97	27.47	2,316.66	7 Apr 20	23:30
Specific Business	3,500	110,707,837	165.63	2.17	177.73	2.32	208.20	3 Apr 20	22:30
Non Profit Organization	322	10,943,430	28.21	0.37	20.72	0.27	46.12	1 Apr 20	9:30
Public Lighting	-	41,658,969	0.00	0.00	0.00	0.00	115.72	-	-
Loss	-	197,476,983	362.00	4.75	361.09	4.71	362.00	1 Apr 20	14:30
TOTAL	3,931,033	4,281,559,198	7,618.00	100.00	7,663.94	100.00	7,663.94	1 Apr 20	14:00

Table 1-2

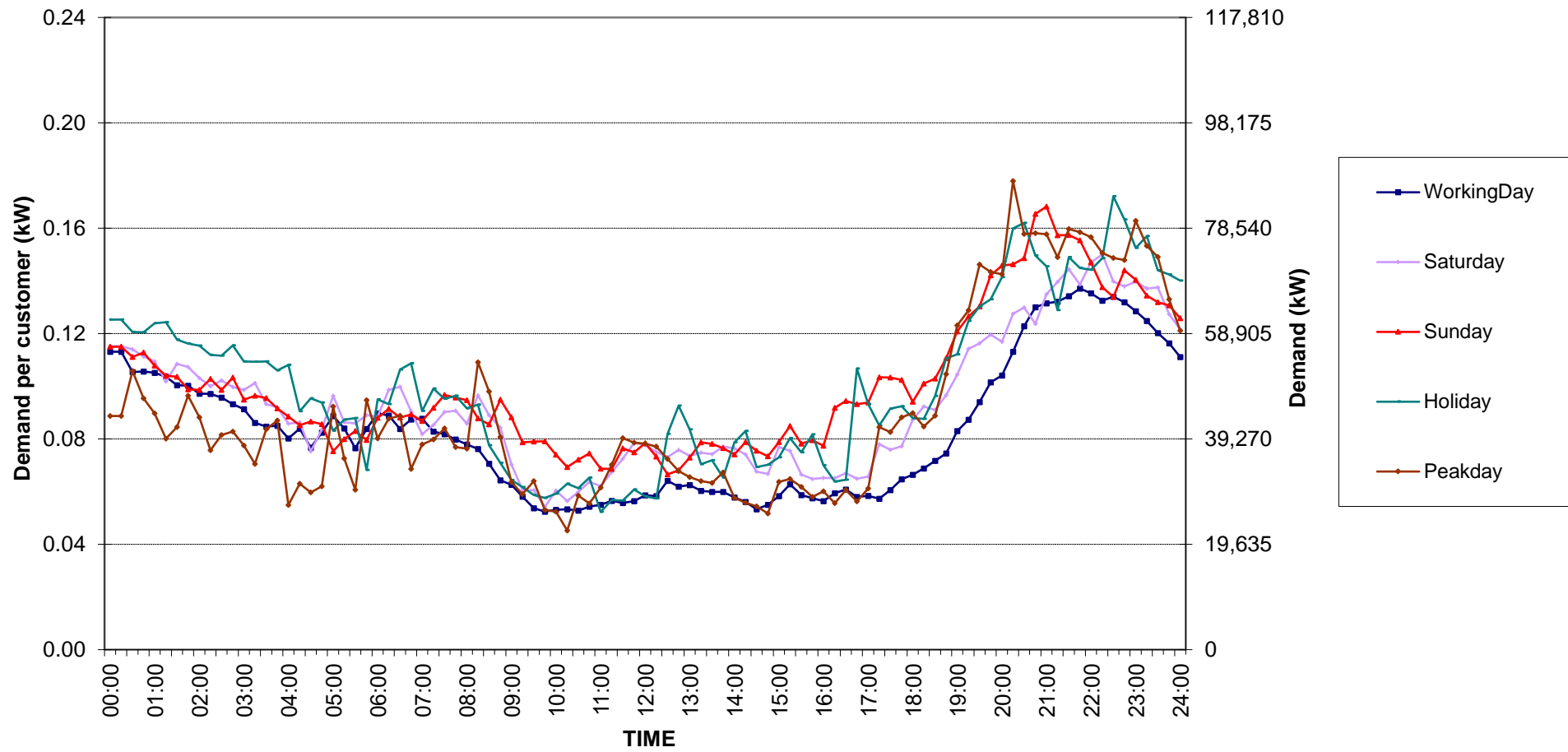
Number of sample customers on April, 2020

CLASS	Number of sample customers (Target)	Number of sample customers (Collected)
Residential	171	171
Small General Service	258	258
Medium General Service	165	165
Large General Service	284	284
Specific Business	74	74
Non-profit Organization	50	50
TOTAL	1,002	1,002

Residential ( Energy Consumption less than 150 kWh per month )

Date: 1 Apr, 2020 to 30 Apr, 2020

Number of sample customers = 52

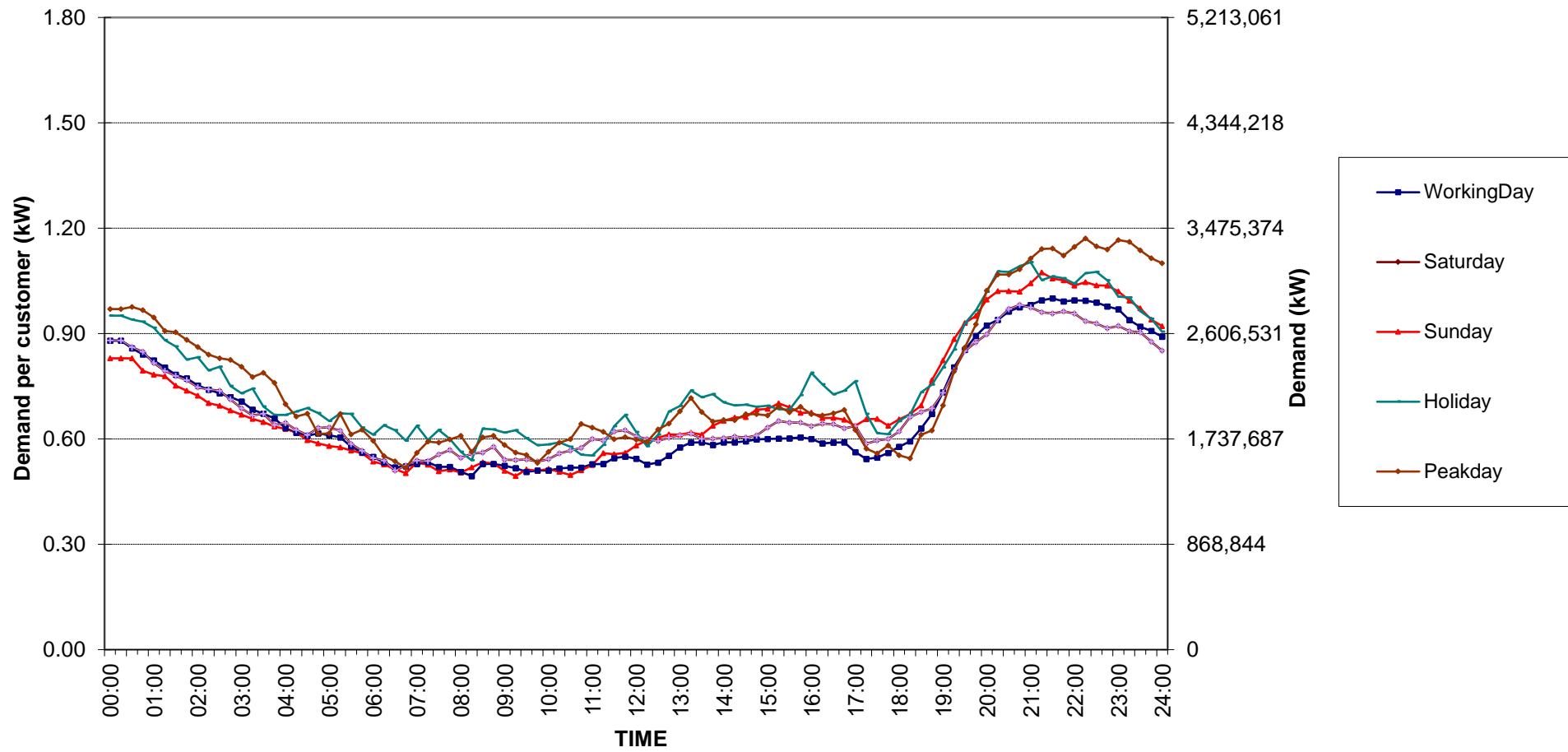


กราฟรูปที่ 1

Residential ( Energy Consumption more than 150 kWh per month )

Date: 1 Apr, 2020 to 30 Apr, 2020

Number of sample customers = 119

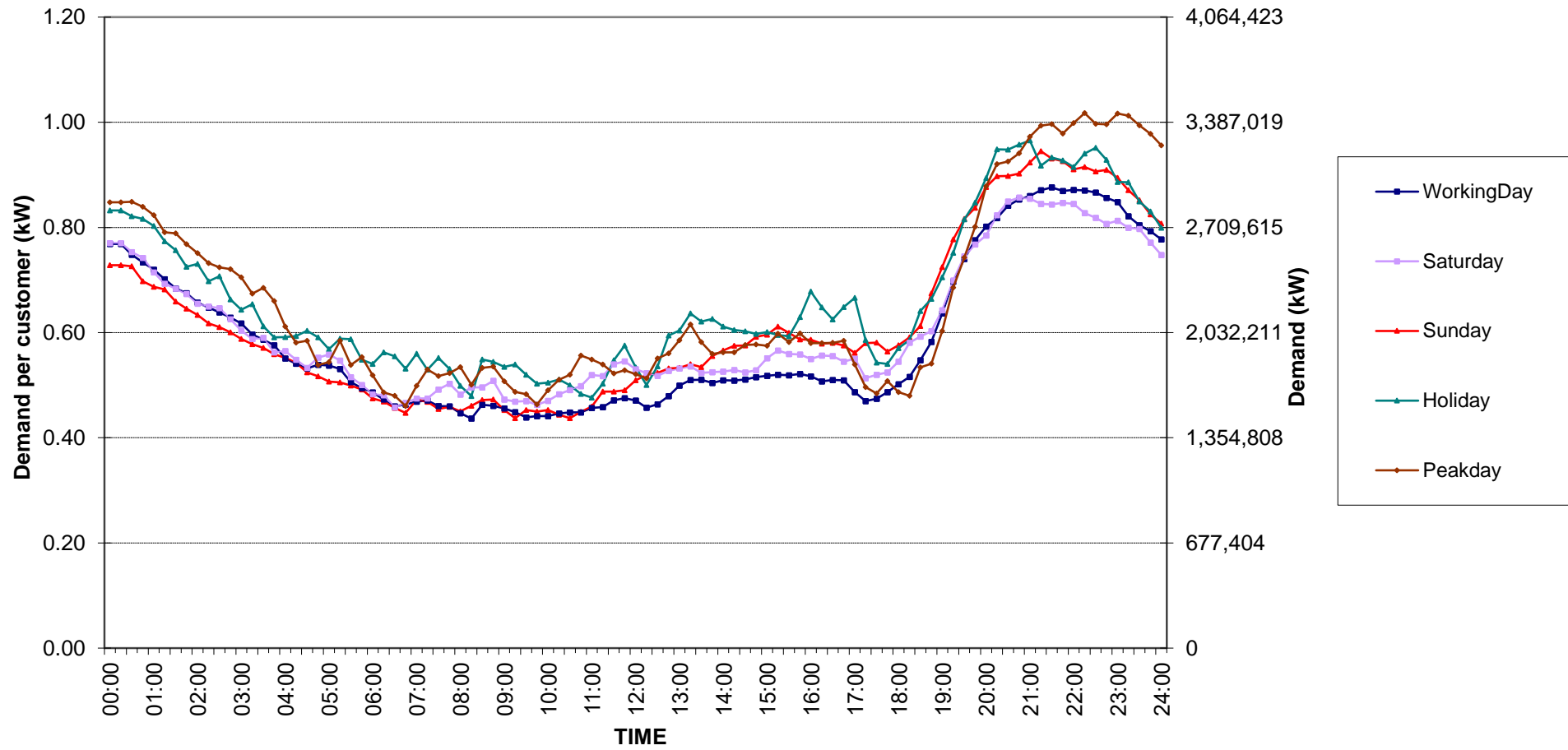


กราฟรูปที่ 2

# Residential Load Profile

Date: 1 Apr, 2020 to 30 Apr, 2020

Number of sample customers = 171

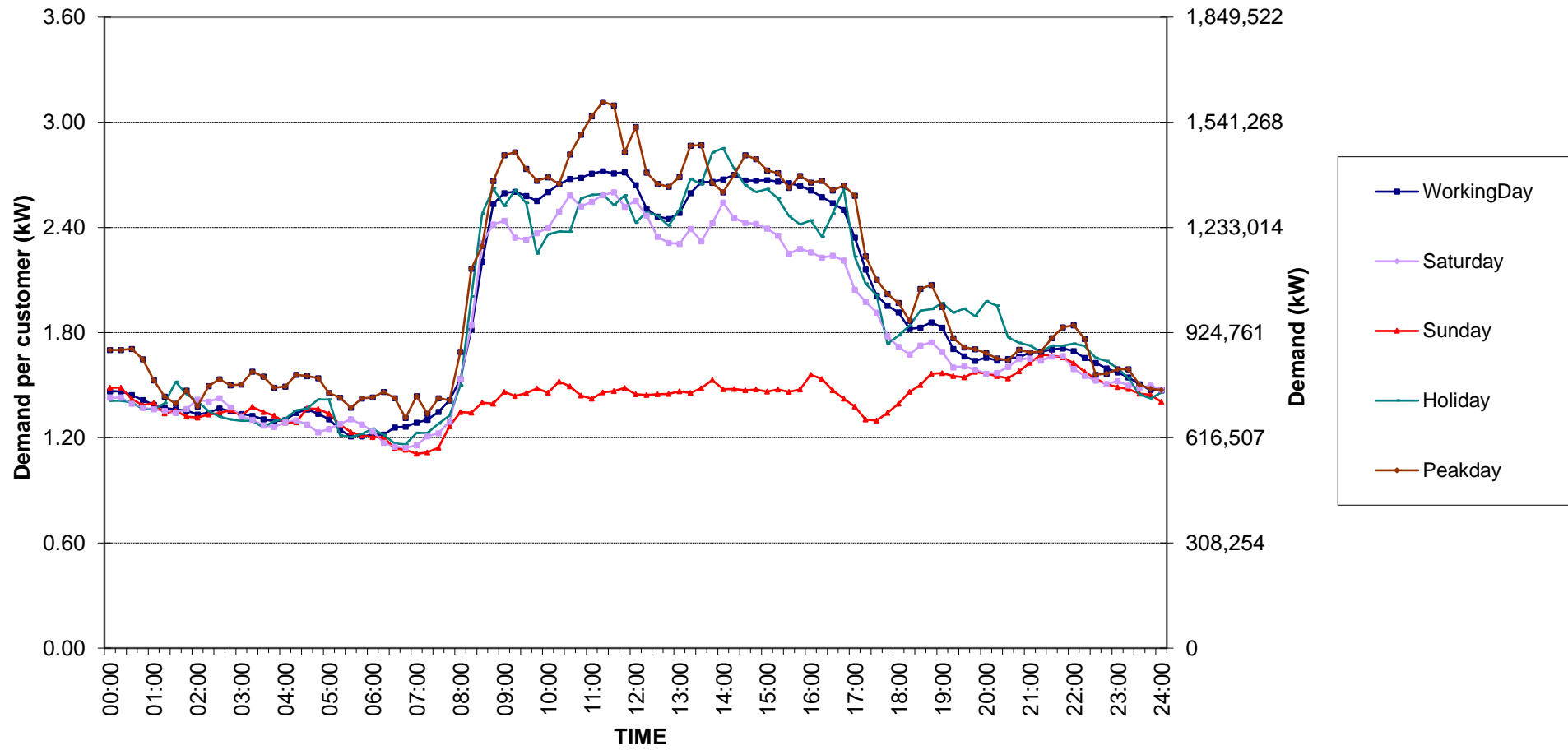


กราฟรูปที่ 3

### Small General Services Load Profile

Date: 1 Apr, 2020 to 30 Apr, 2020

Number of sample customers = 258

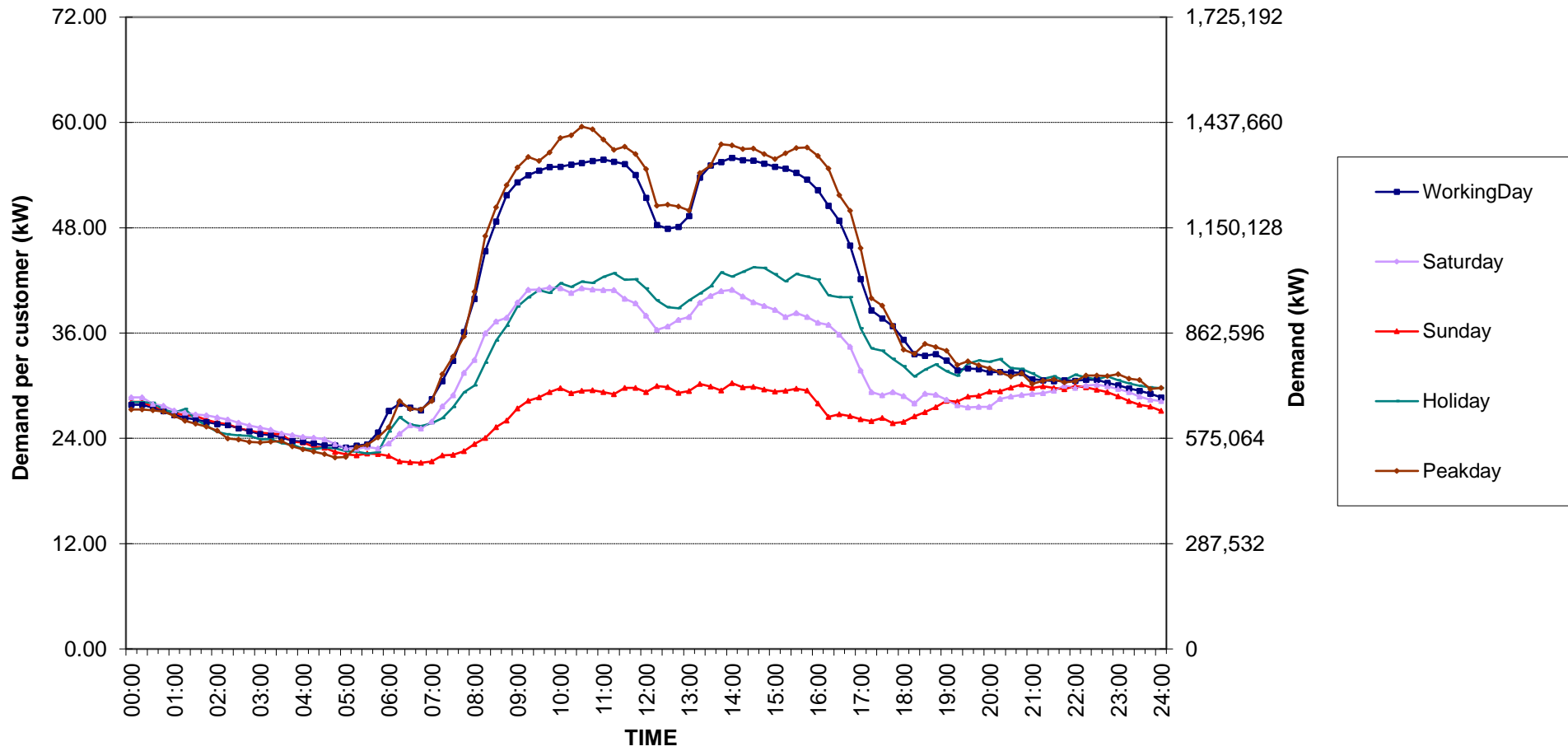


กราฟรูปที่ 4

### Medium General Services Load Profile

Date: 1 Apr, 2020 to 30 Apr, 2020

Number of sample customers = 165



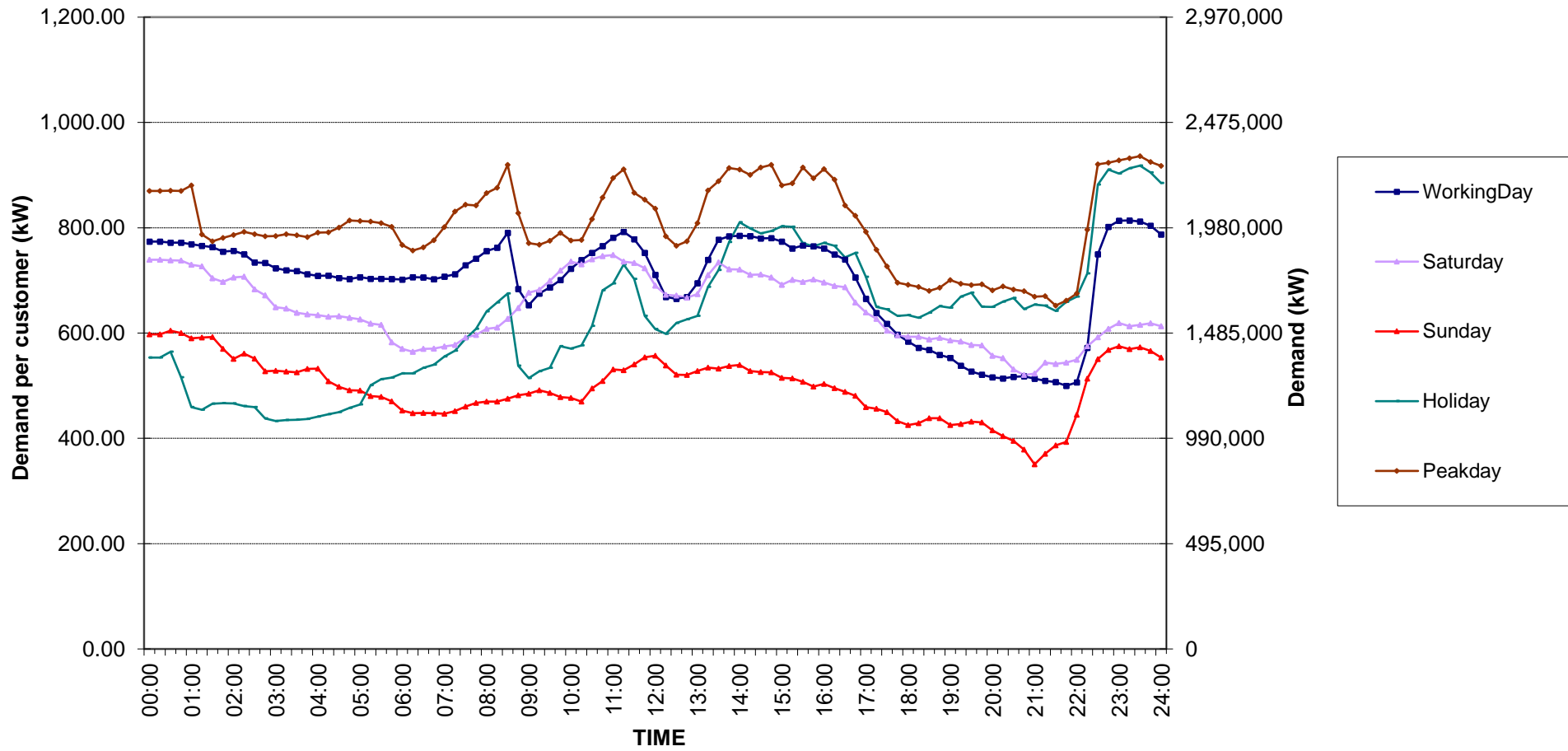
กราฟรูปที่ 5



# Large General Services Load Profile

Date: 1 Apr, 2020 to 30 Apr, 2020

Number of sample customers = 284

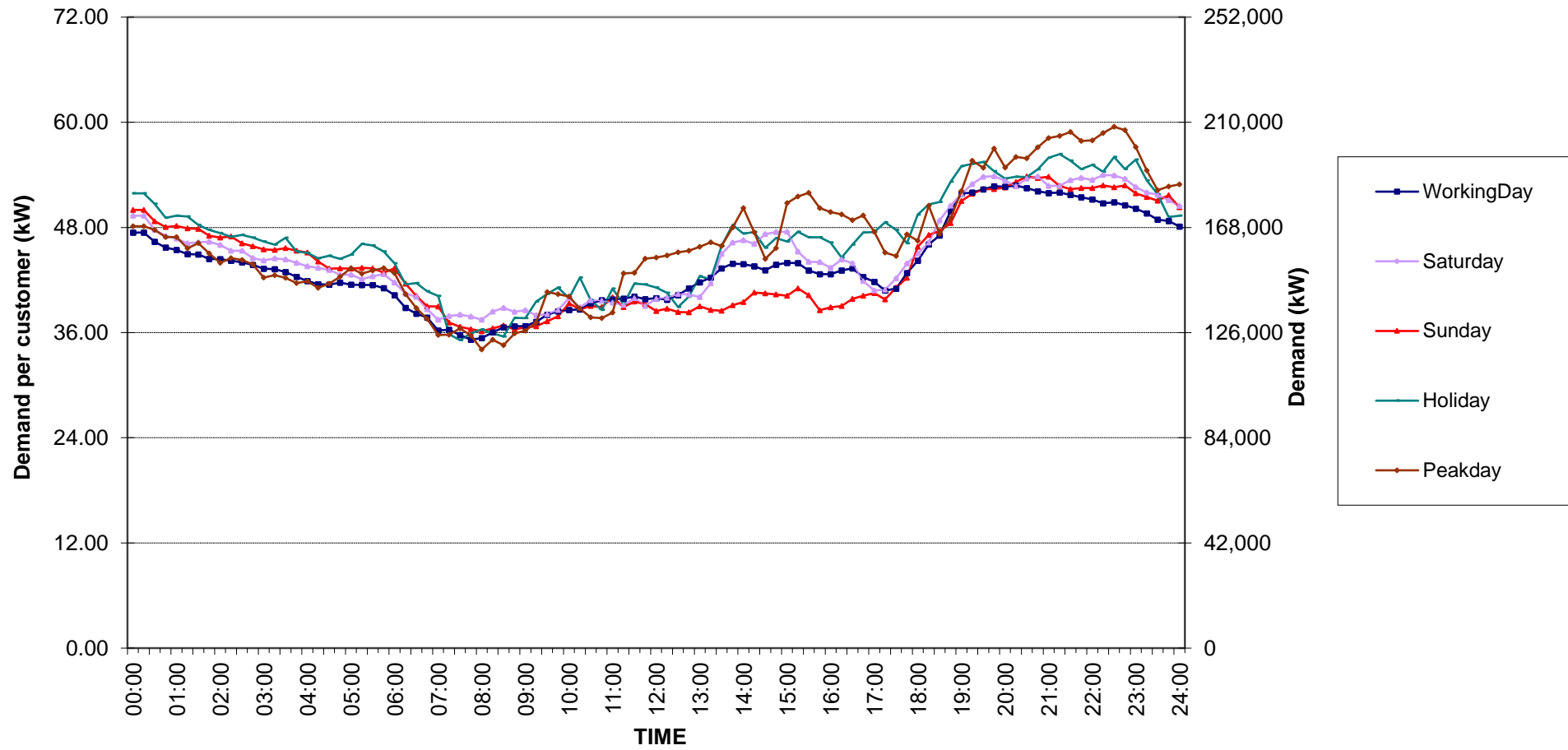


กราฟรูปที่ 6

### Specific Business Load Profile

Date: 1 Apr, 2020 to 30 Apr, 2020

Number of sample customers = 74

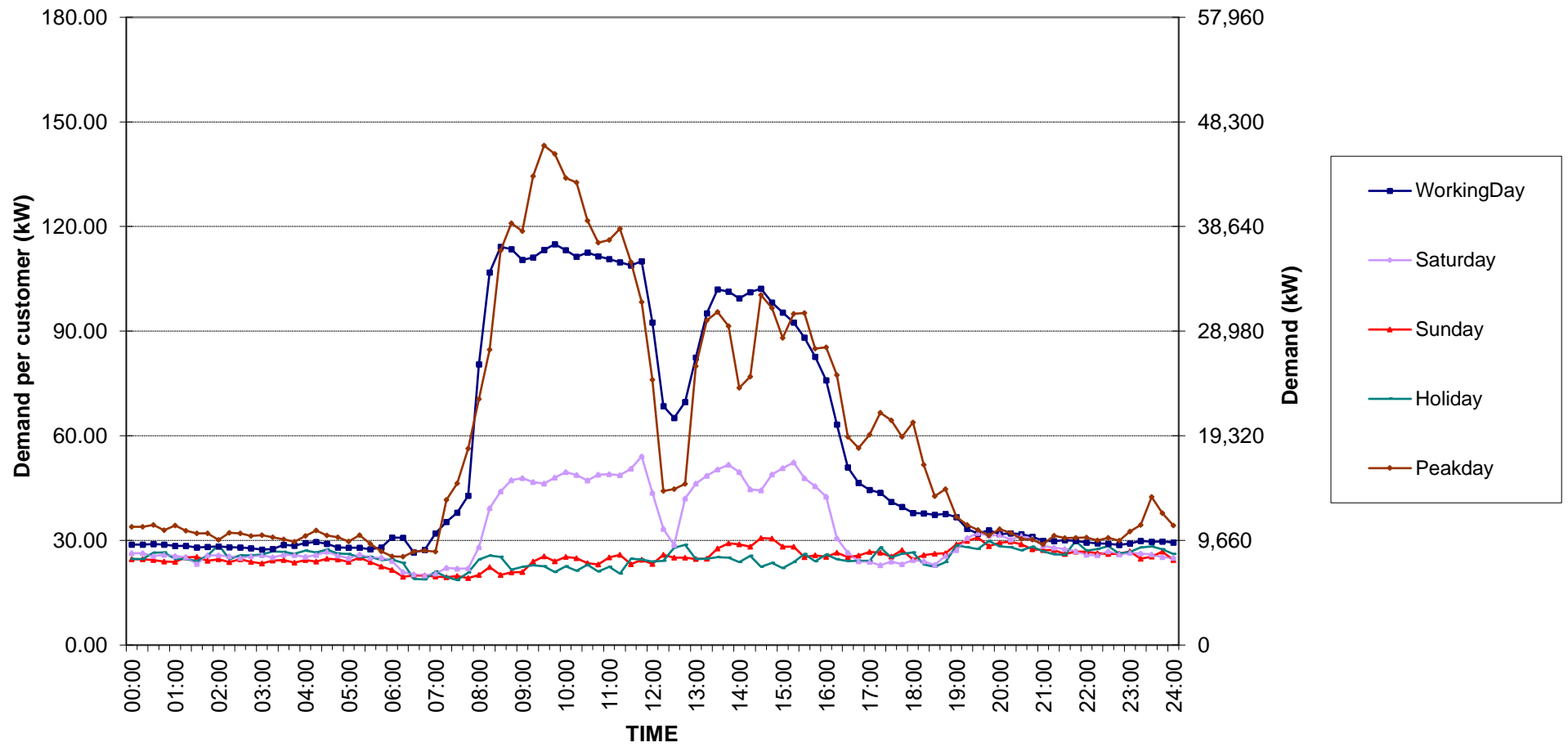


กราฟรูปที่ 7

# Non-profit organizations Load Profile

Date: 1 Apr, 2020 to 30 Apr, 2020

Number of sample customers = 50

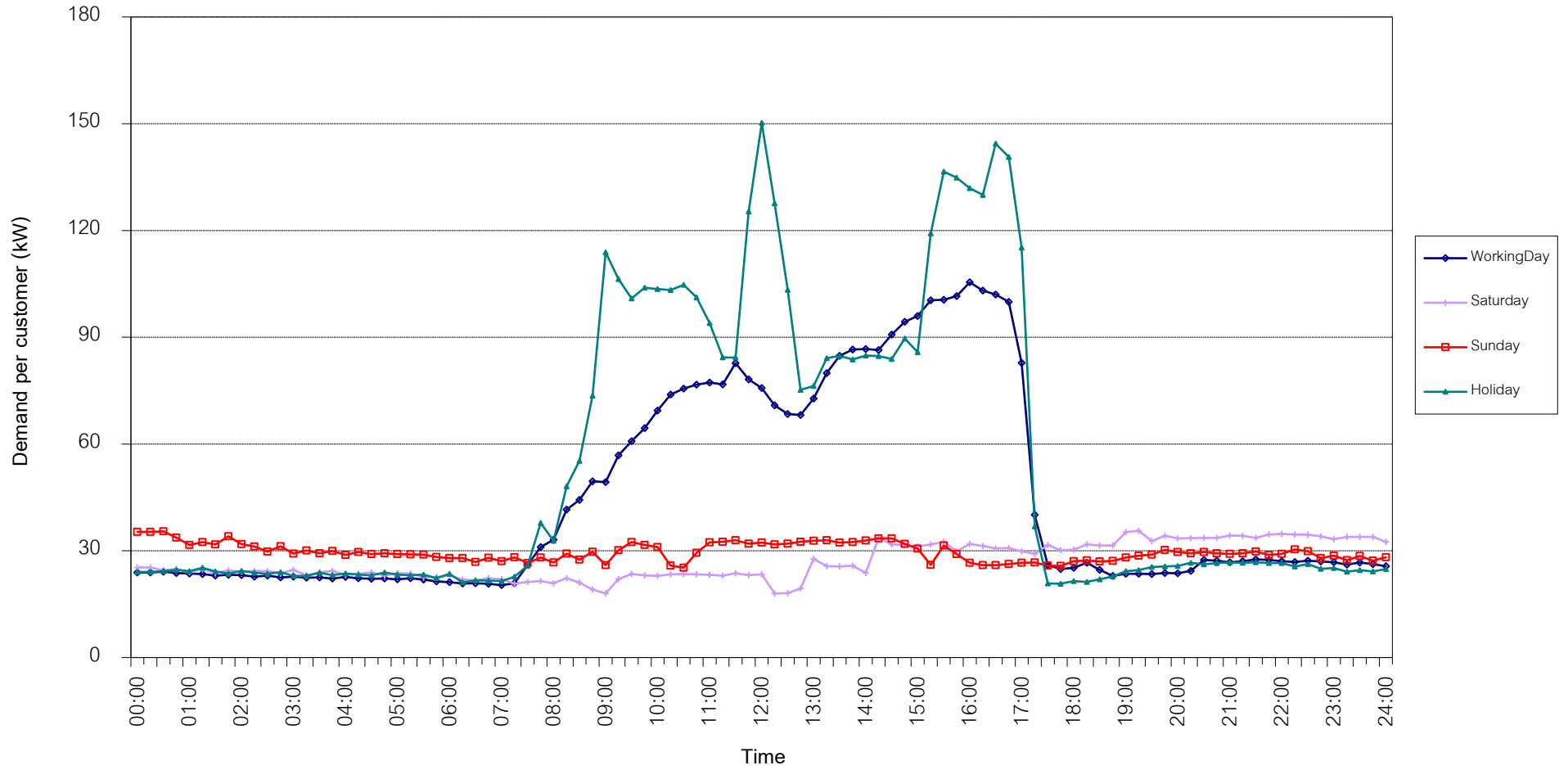


กราฟรูปที่ 8

TSIC 31 (Food Processing) Load Profile

Date: 1 Apr, 2020 to 30 Apr, 2020

Number of sample customers = 32

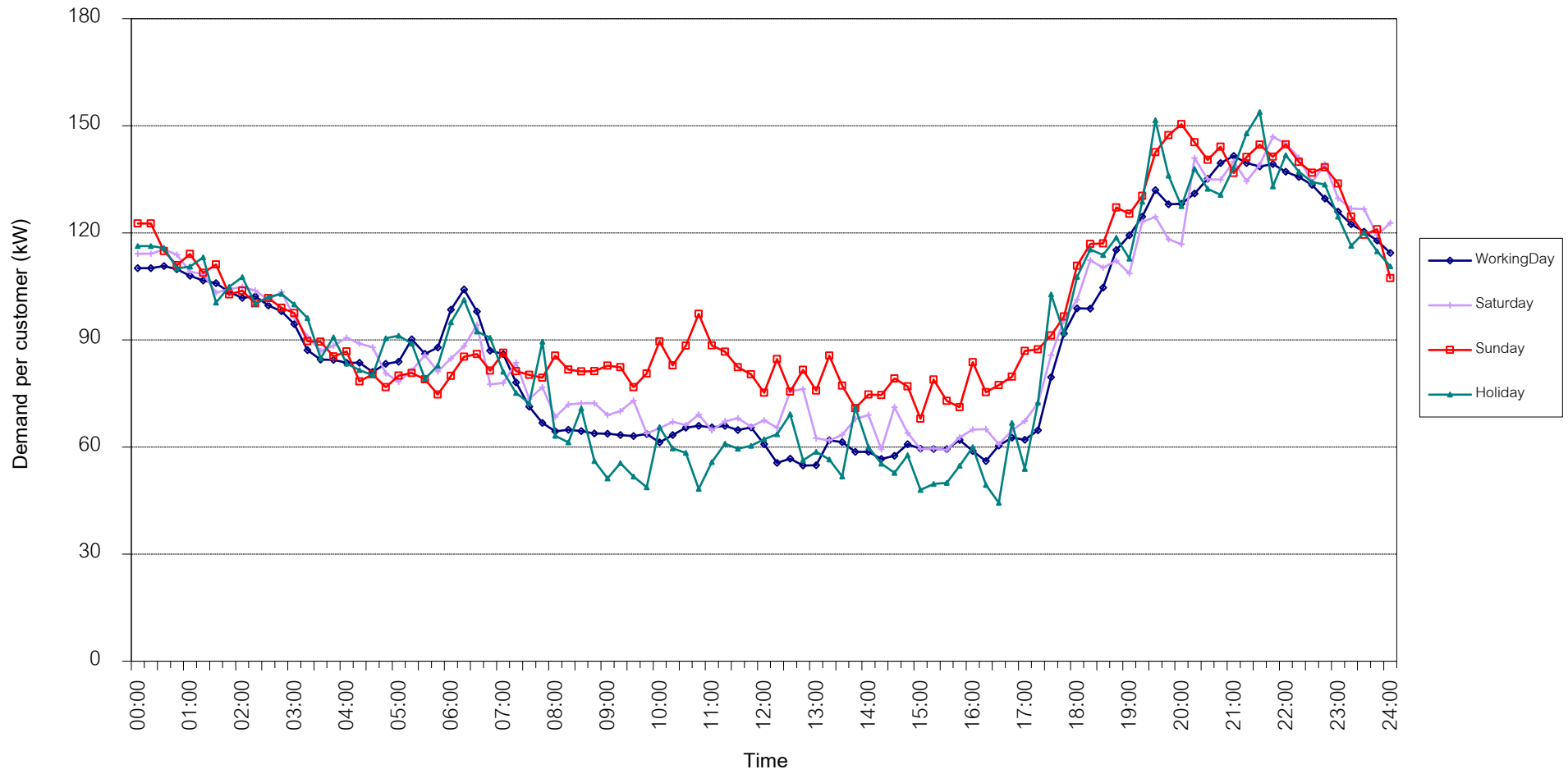


กราฟรูปที่ 9

TSIC 32 (Textiles) Load Profile

Date: 1 Apr, 2020 to 30 Apr, 2020

Number of sample customers = 67

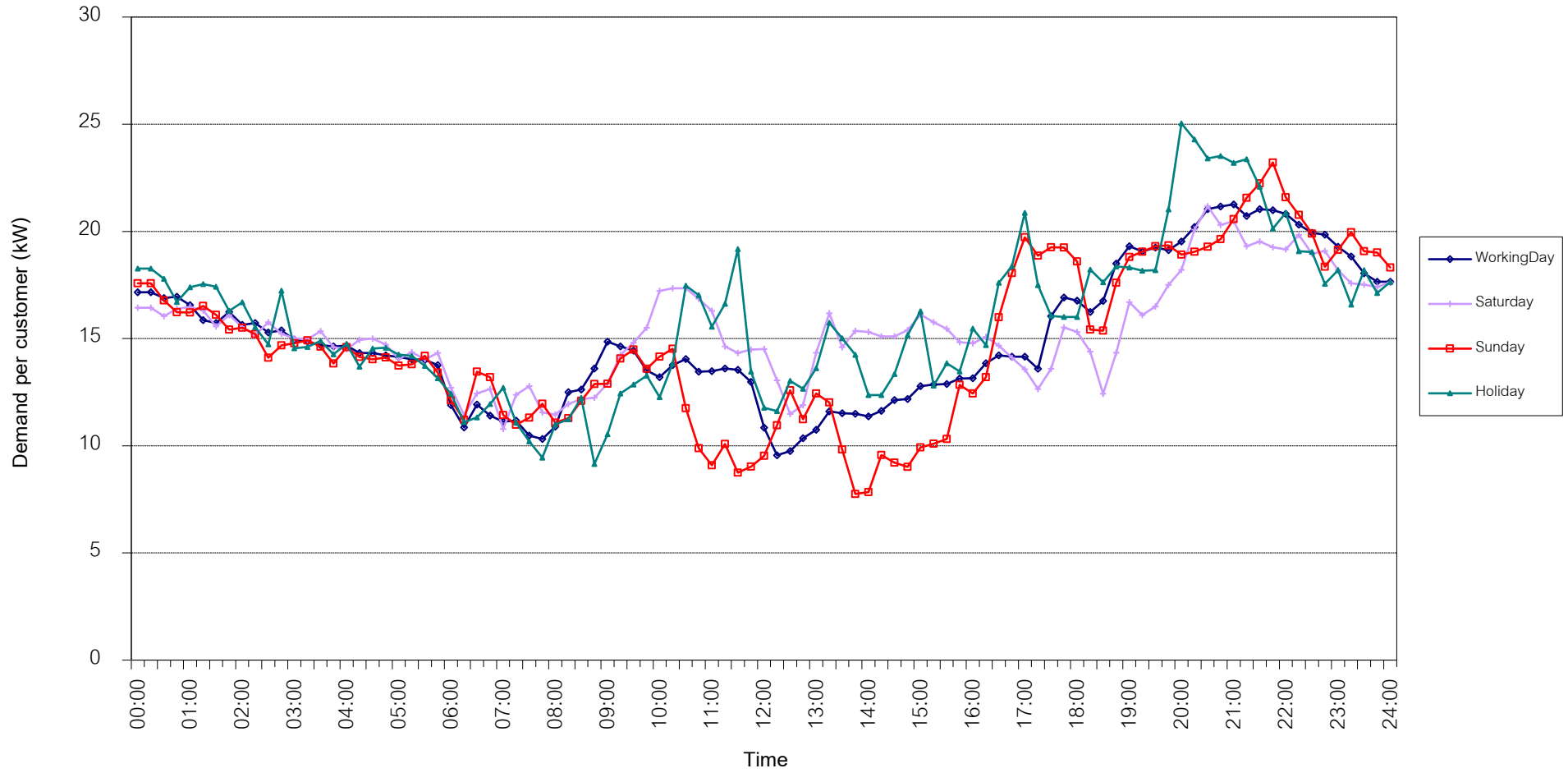


กราฟรูปที่ 10

TSIC 34 (Paper & Printing) Load Profile

Date: 1 Apr, 2020 to 30 Apr, 2020

Number of sample customers = 12

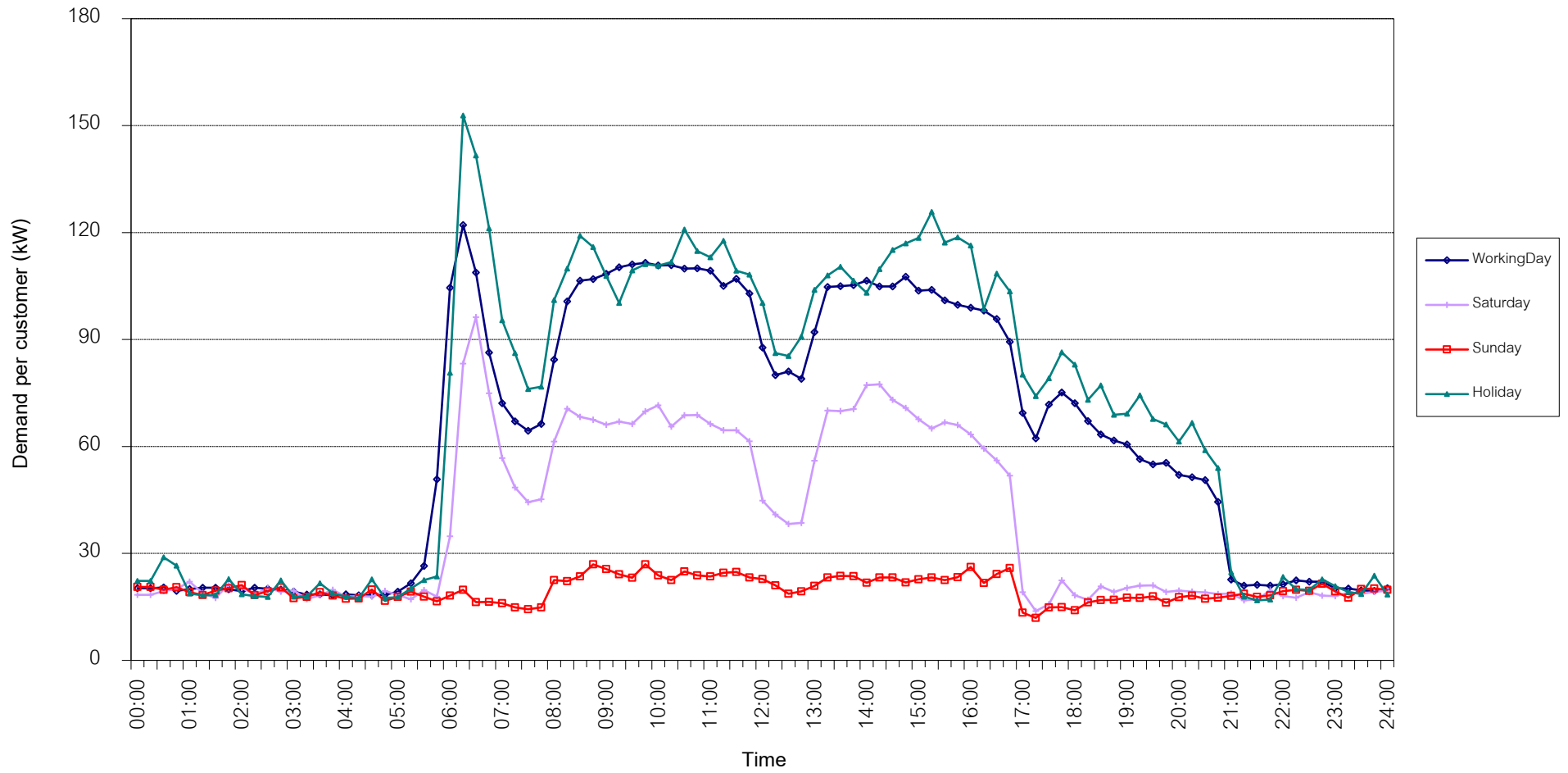


กราฟรูปที่ 11

TSIC 35 (Chemical & Petroleum) Load Profile

Date: 1 Apr, 2020 to 30 Apr, 2020

Number of sample customers = 75

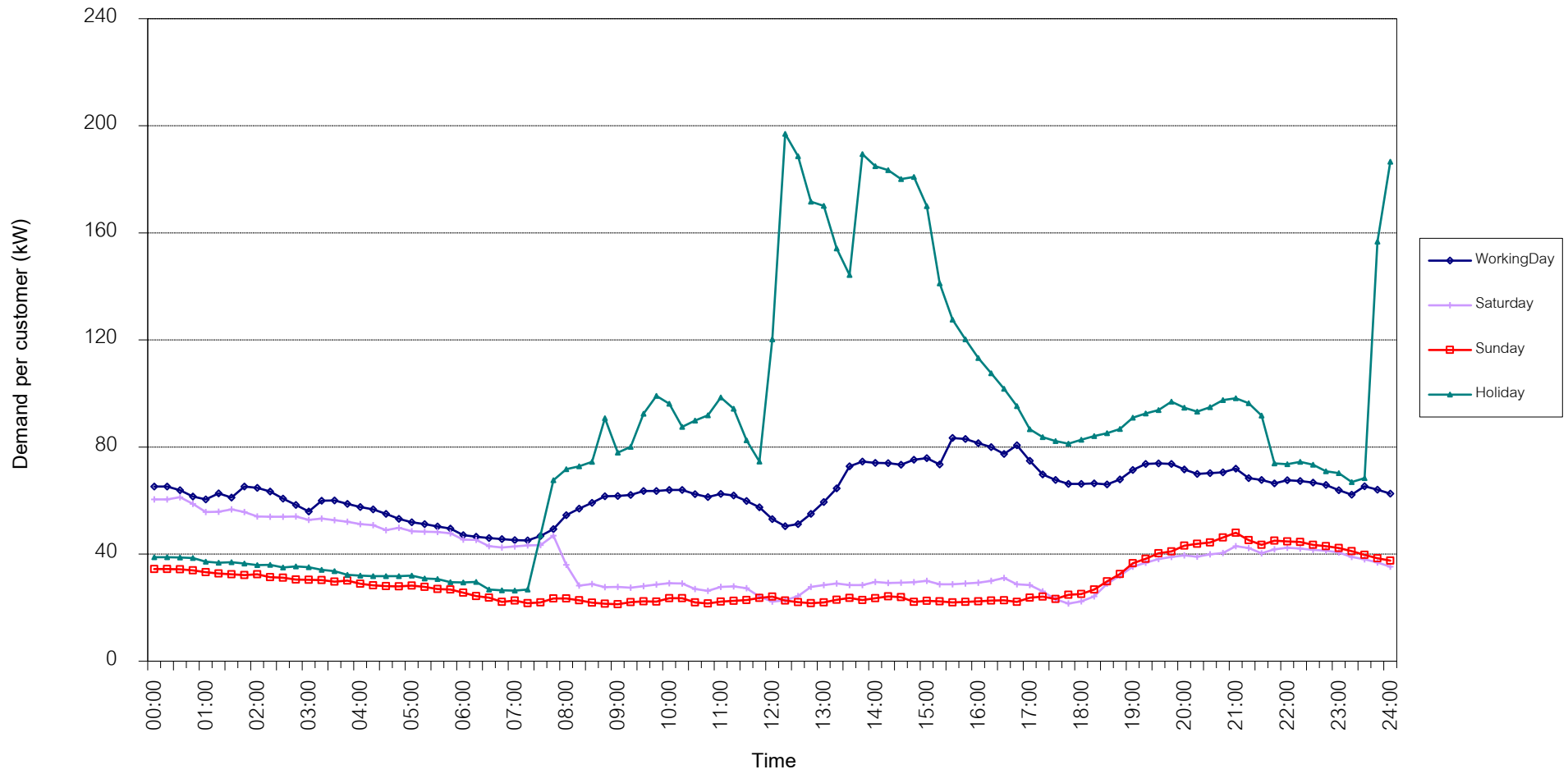


กราฟรูปที่ 12

TSIC 38 (Fabricated Metal Products) Load Profile

Date: 1 Apr, 2020 to 30 Apr, 2020

Number of sample customers = 62



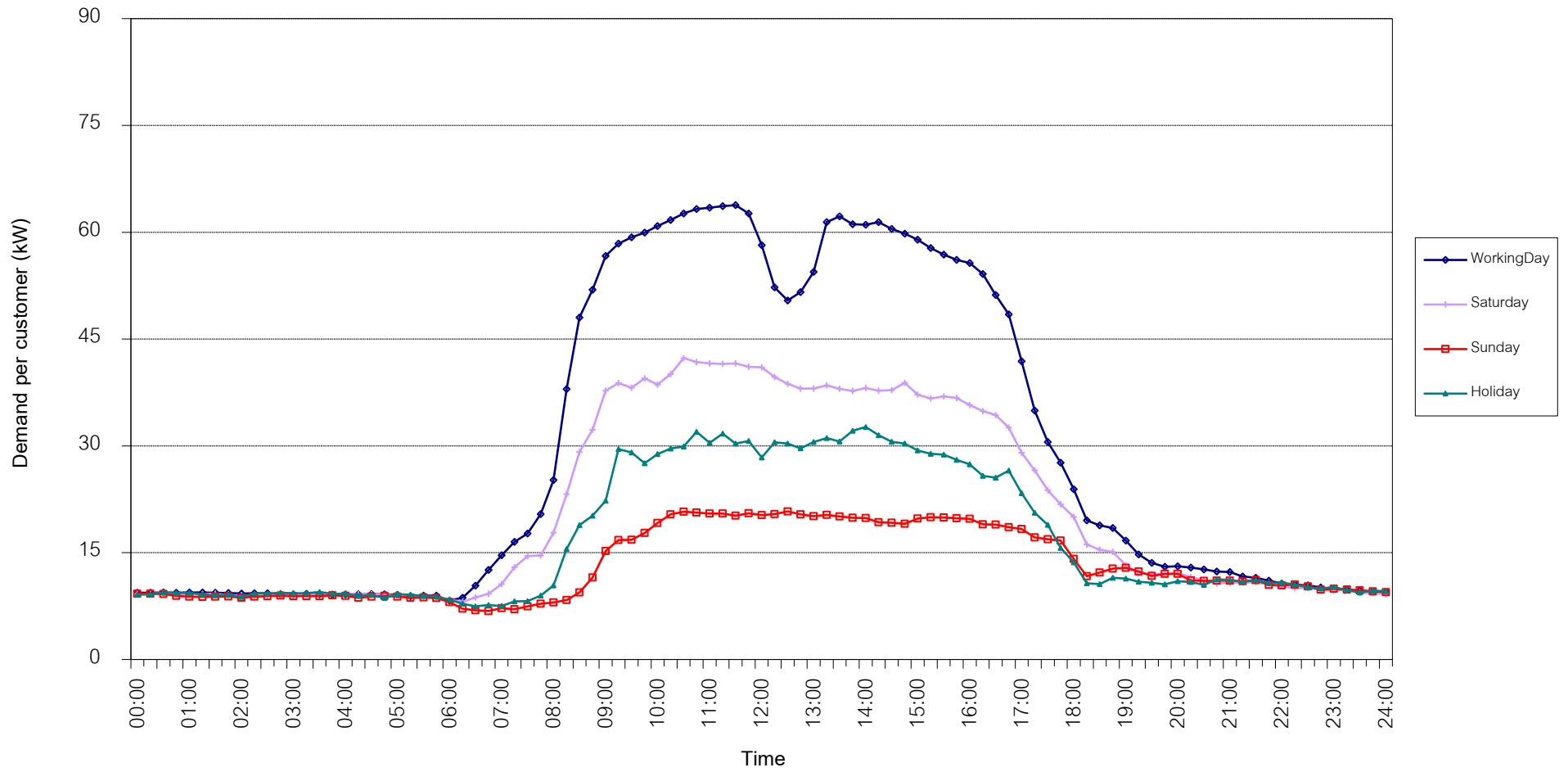
กราฟรูปที่ 13



TSIC 61 (Wholesale Trade) Load Profile

Date: 1 Apr, 2020 to 30 Apr, 2020

Number of sample customers = 48

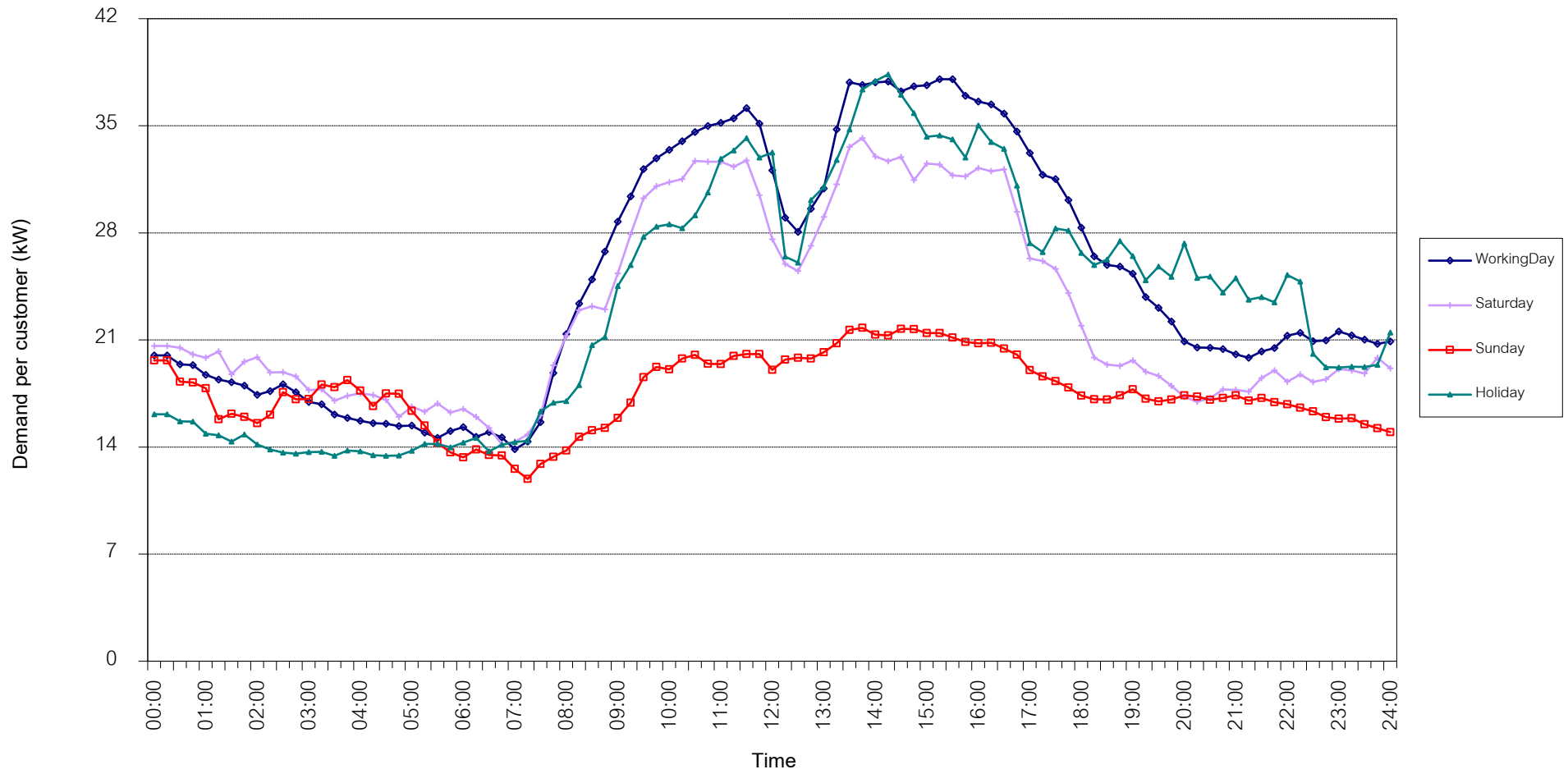


กราฟรูปที่ 14

TSIC 62 (Retail Trade) Load Profile

Date: 1 Apr, 2020 to 30 Apr, 2020

Number of sample customers = 93

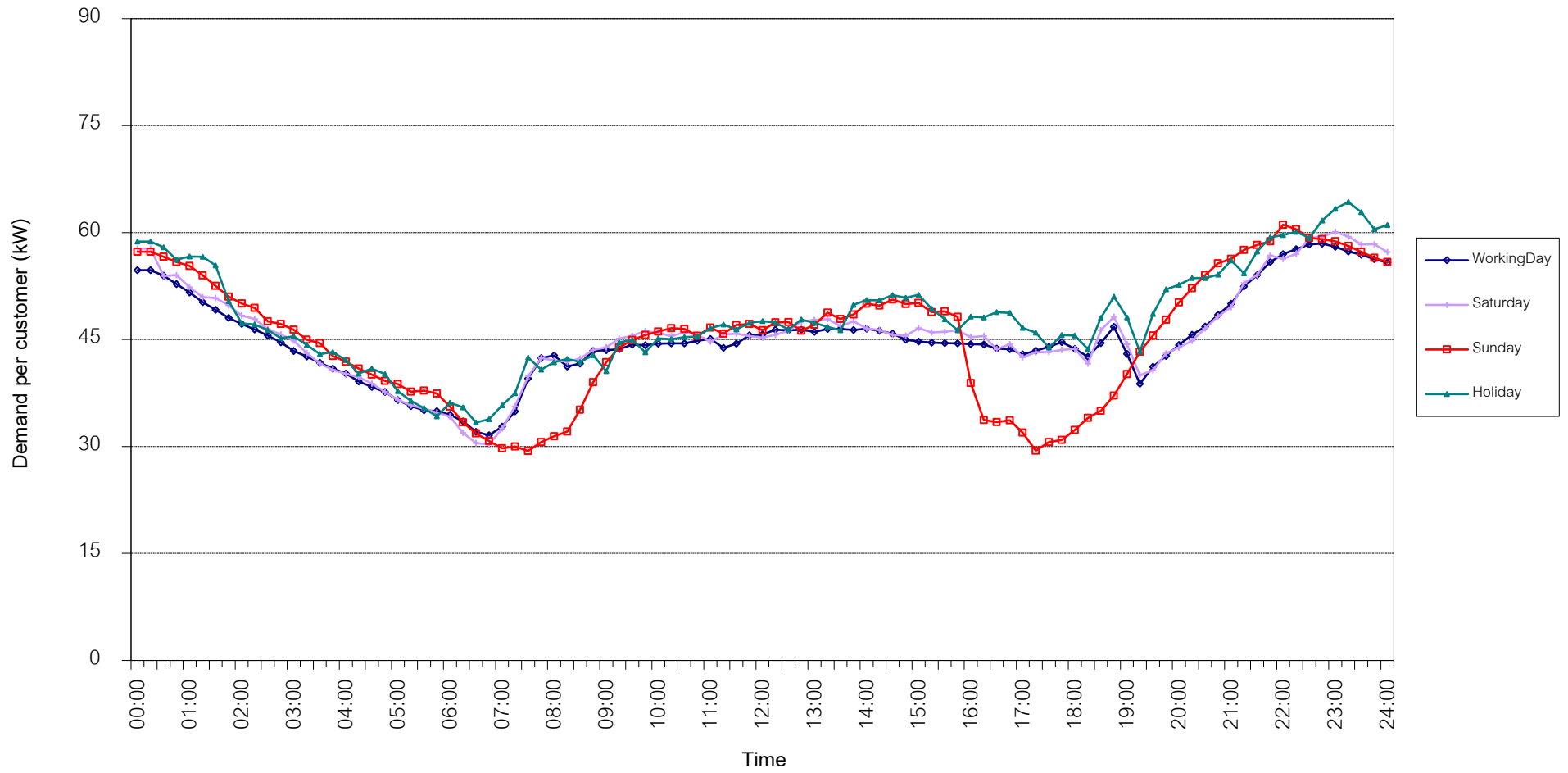


กราฟรูปที่ 15

TSIC 63 (Hotels and restaurants) Load Profile

Date: 1 Apr, 2020 to 30 Apr, 2020

Number of sample customers = 117

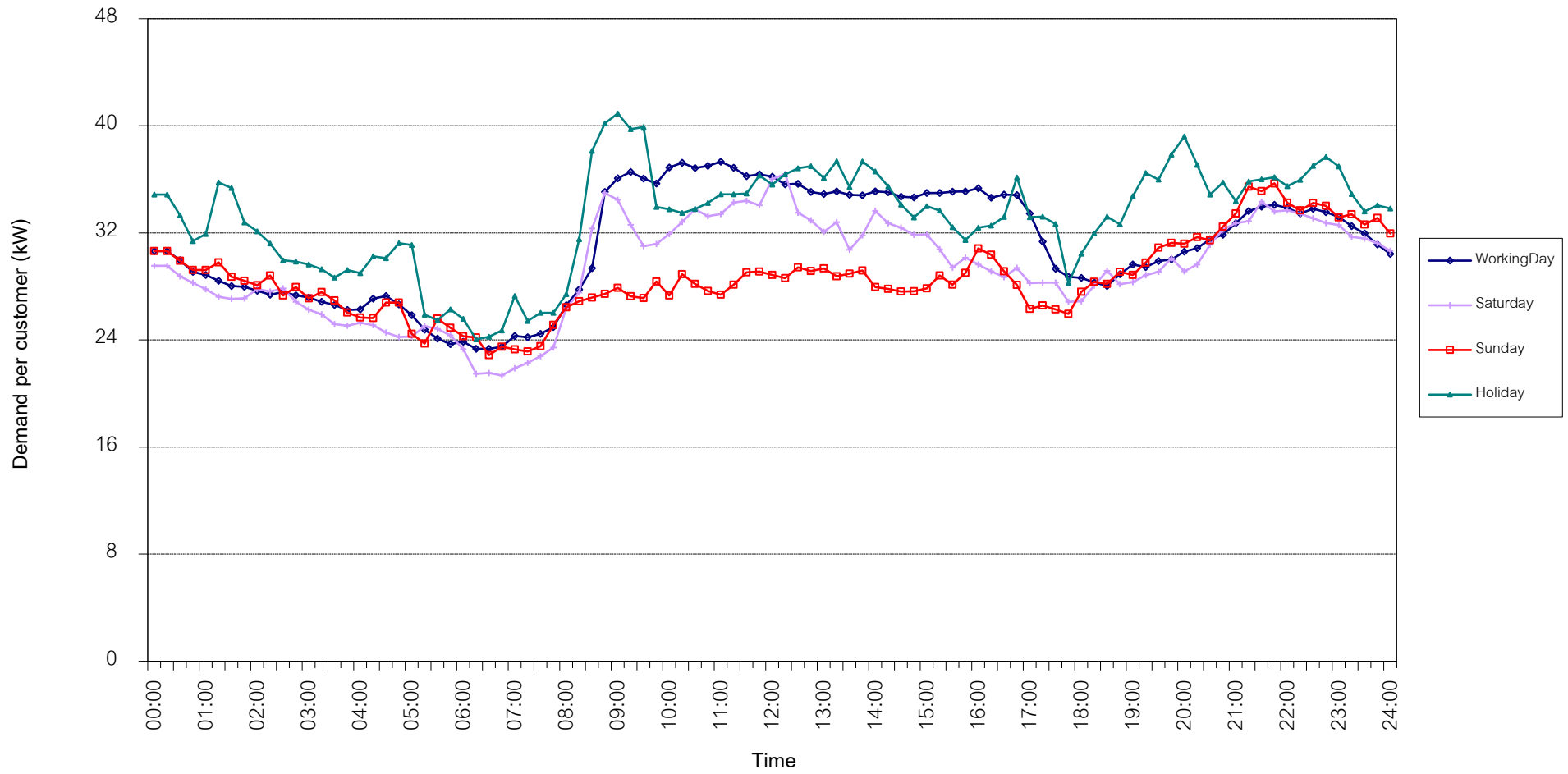


กราฟรูปที่ 16

TSIC 83 (Real Estate) Load Profile

Date: 1 Apr, 2020 to 30 Apr, 2020

Number of sample customers = 47

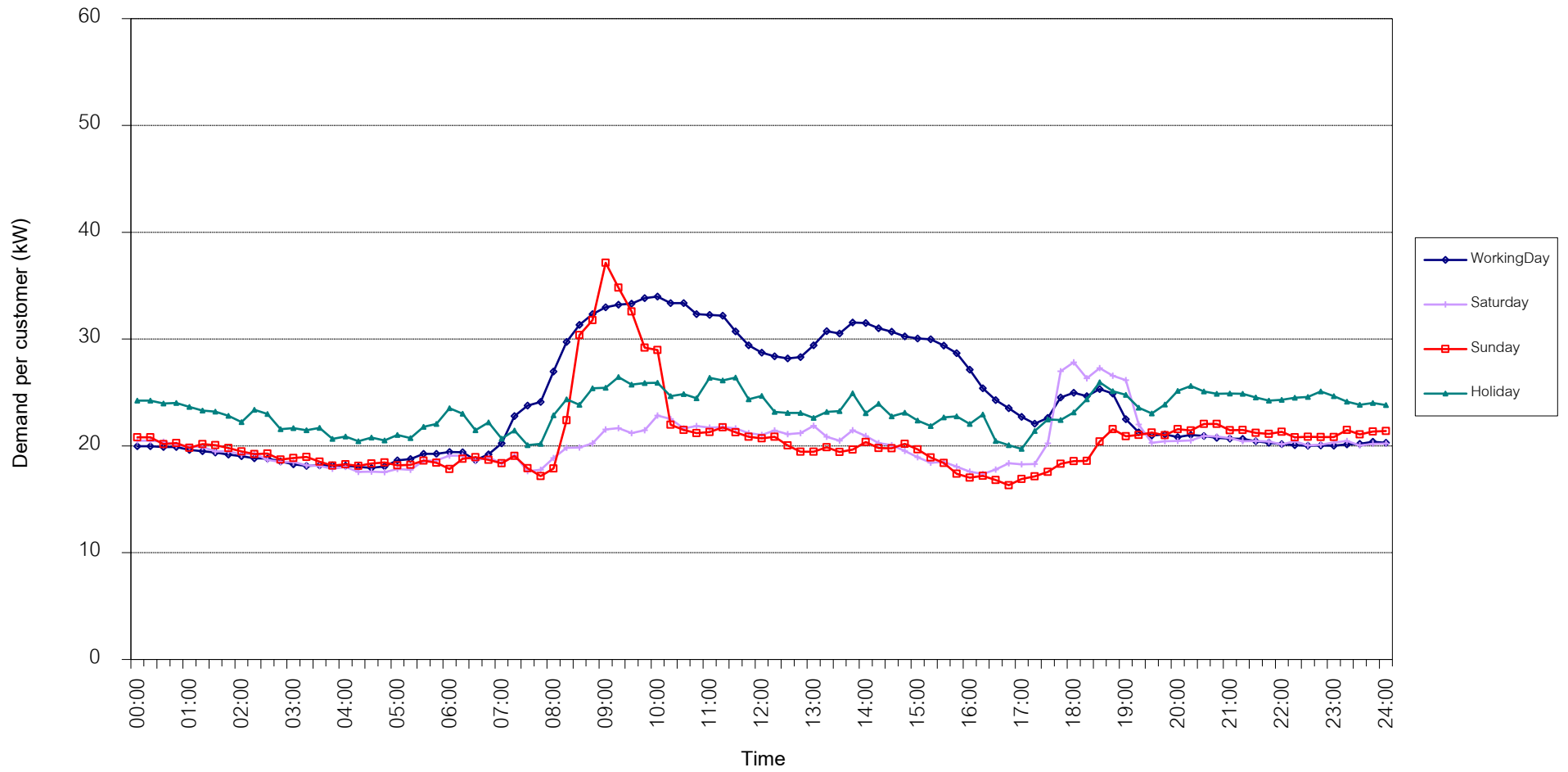


กราฟรูปที่ 17

TSIC 93 (Social Services) Load Profile

Date: 1 Apr, 2020 to 30 Apr, 2020

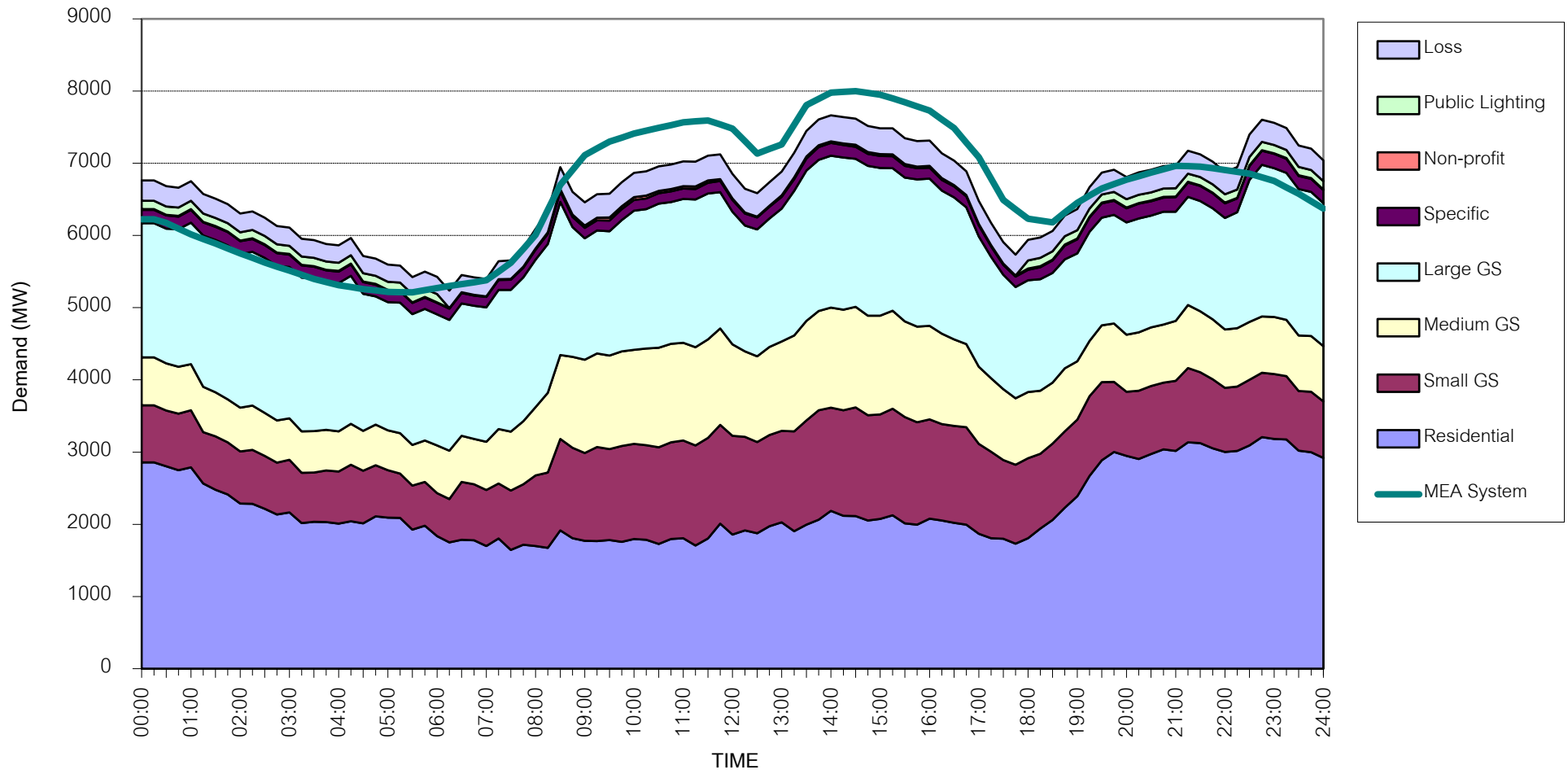
Number of sample customers = 27



กราฟรูปที่ 18

# MEA's System Load Profile

Peak Day 1 Apr, 2020 at 14:30



กราฟรูปที่ 19