

ข้อมูลการศึกษาลักษณะการใช้ไฟฟ้า

เดือน สิงหาคม 2562

Table 1-1

COINCIDENT WITH LOAD RESEARCH SYSTEM'S PEAK ON August 16,2019 time 15:00 8,058.05 MW  
 ( MEA SYSTEM'S PEAK ON August 16,2019 time 14:30 8,453.25 MW )

CLASS	Number of Customers	Kilowatt hours	Coincident Peak (MEA System Peak at time 14:30 )		Coincident Peak (Load Research System Peak at time 15:00)		Sector Diversified Demand		
			MW	Contribution (%)	MW	Contribution (%)	Max MW.	Date	Time
Residential	3,308,129	1,184,582,736	1,732.11	21.82	1,763.11	21.88	2,790.23	18 Aug 19	21:00
Small General Service	513,361	697,906,828	1,339.53	16.87	1,419.68	17.62	1,491.91	16 Aug 19	10:45
Medium General Service	23,740	775,762,472	1,340.44	16.88	1,335.29	16.57	1,529.82	21 Aug 19	19:15
Large General Service	2,462	1,581,748,657	2,995.03	37.72	3,000.11	37.23	3,167.34	19 Aug 19	10:45
Specific Business	3,360	192,398,440	273.19	3.44	282.24	3.50	362.96	15 Aug 19	24:00
Non Profit Organization	324	11,613,336	27.57	0.35	26.80	0.33	60.29	1 Aug 19	13:30
Public Lighting	-	42,439,931	0.00	0.00	0.00	0.00	112.51	-	-
Loss	-	129,585,840	231.95	2.92	230.82	2.86	231.95	16 Aug 19	14:30
TOTAL	3,851,376	4,616,038,240	7,939.81	100.00	8,058.05	100.00	8,058.05	16 Aug 19	15:00

Table 1-2

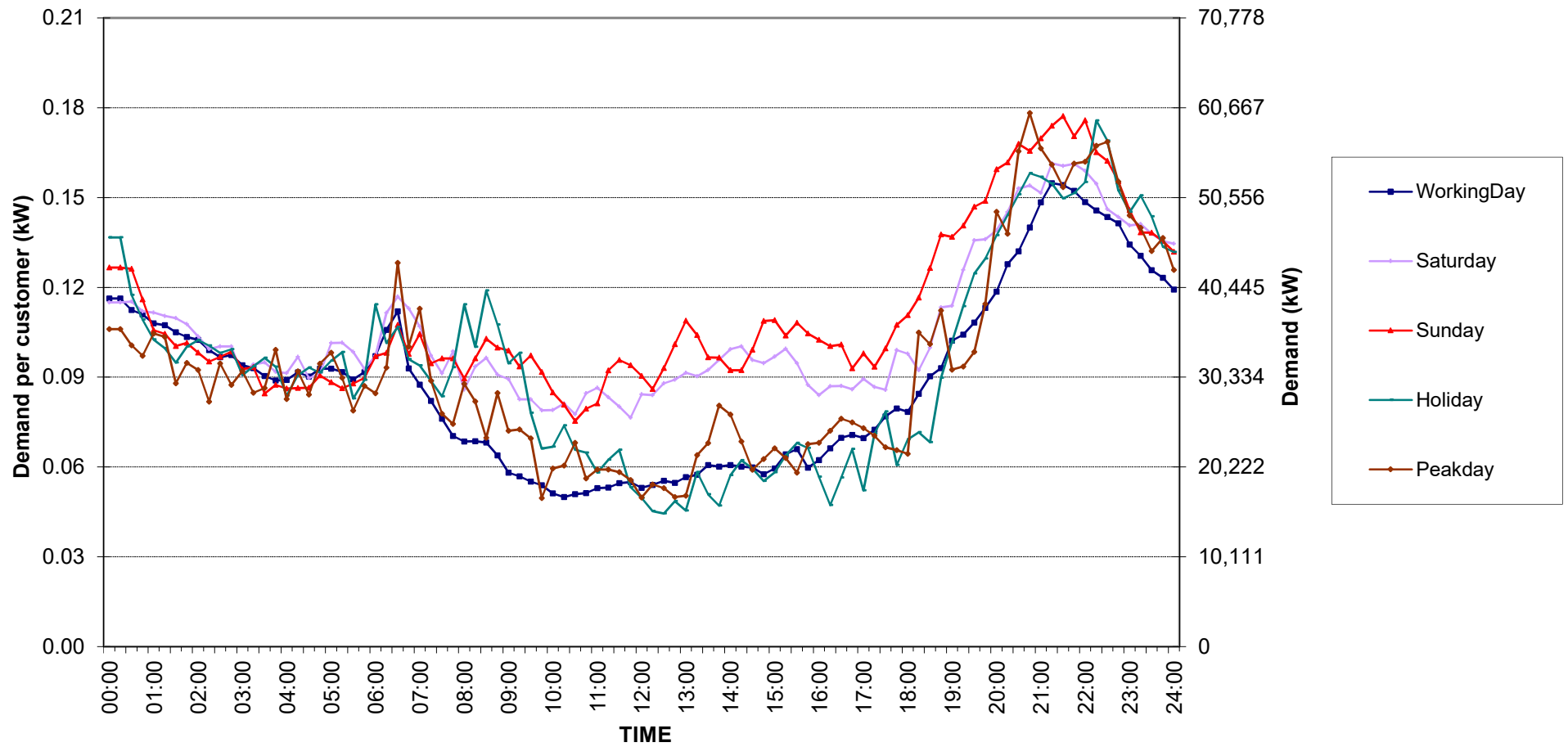
Number of sample customers on August, 2019

CLASS	Number of sample customers (Target)	Number of sample customers (Collected)
Residential	171	171
Small General Service	258	258
Medium General Service	165	165
Large General Service	284	284
Specific Business	74	74
Non-profit Organization	50	50
TOTAL	1,002	1,002

Residential ( Energy Consumption less than 150 kWh per month )

Date: 1 Aug, 2019 to 31 Aug, 2019

Number of sample customers = 52

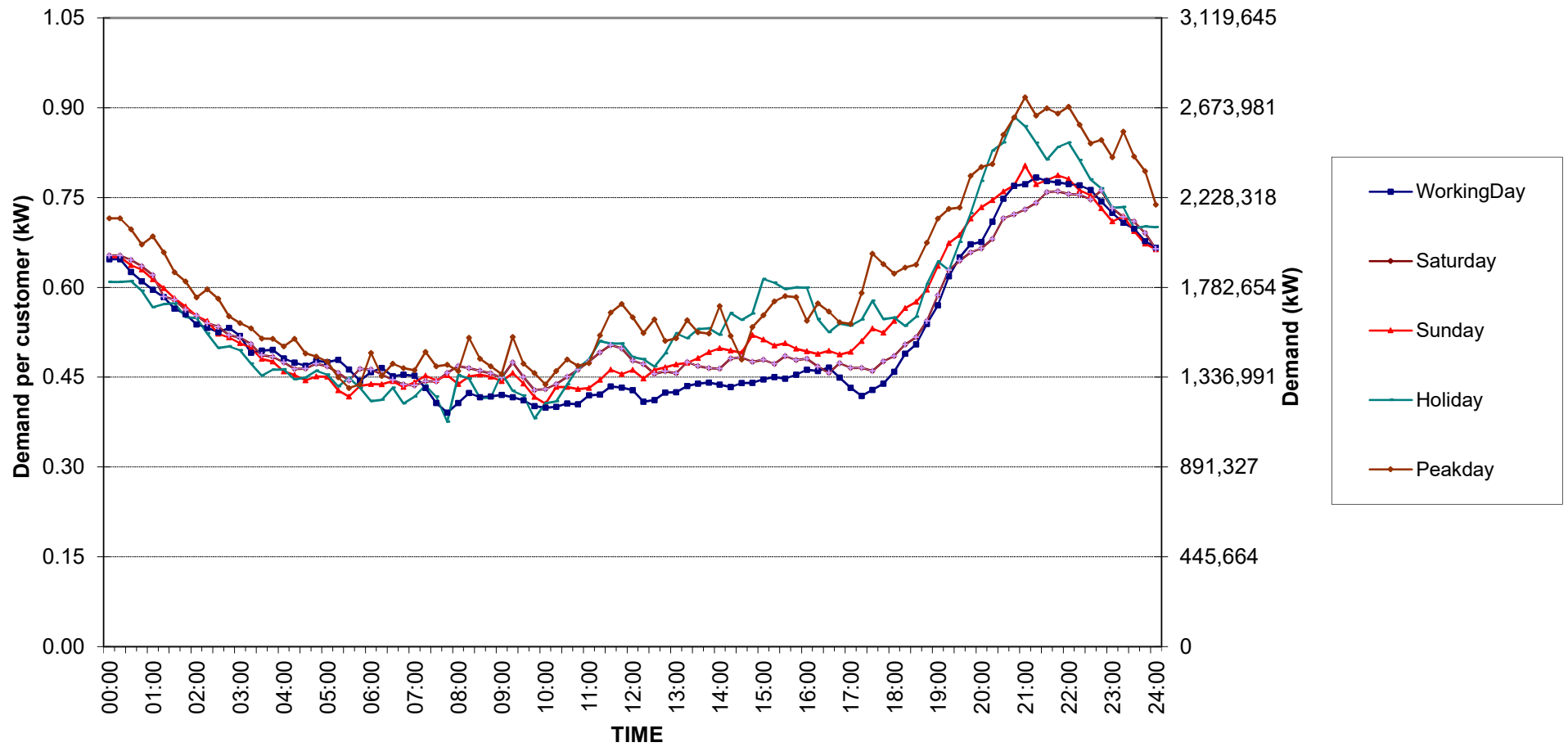


กราฟรูปที่ 1

Residential ( Energy Consumption more than 150 kWh per month )

Date: 1 Aug, 2019 to 31 Aug, 2019

Number of sample customers = 119

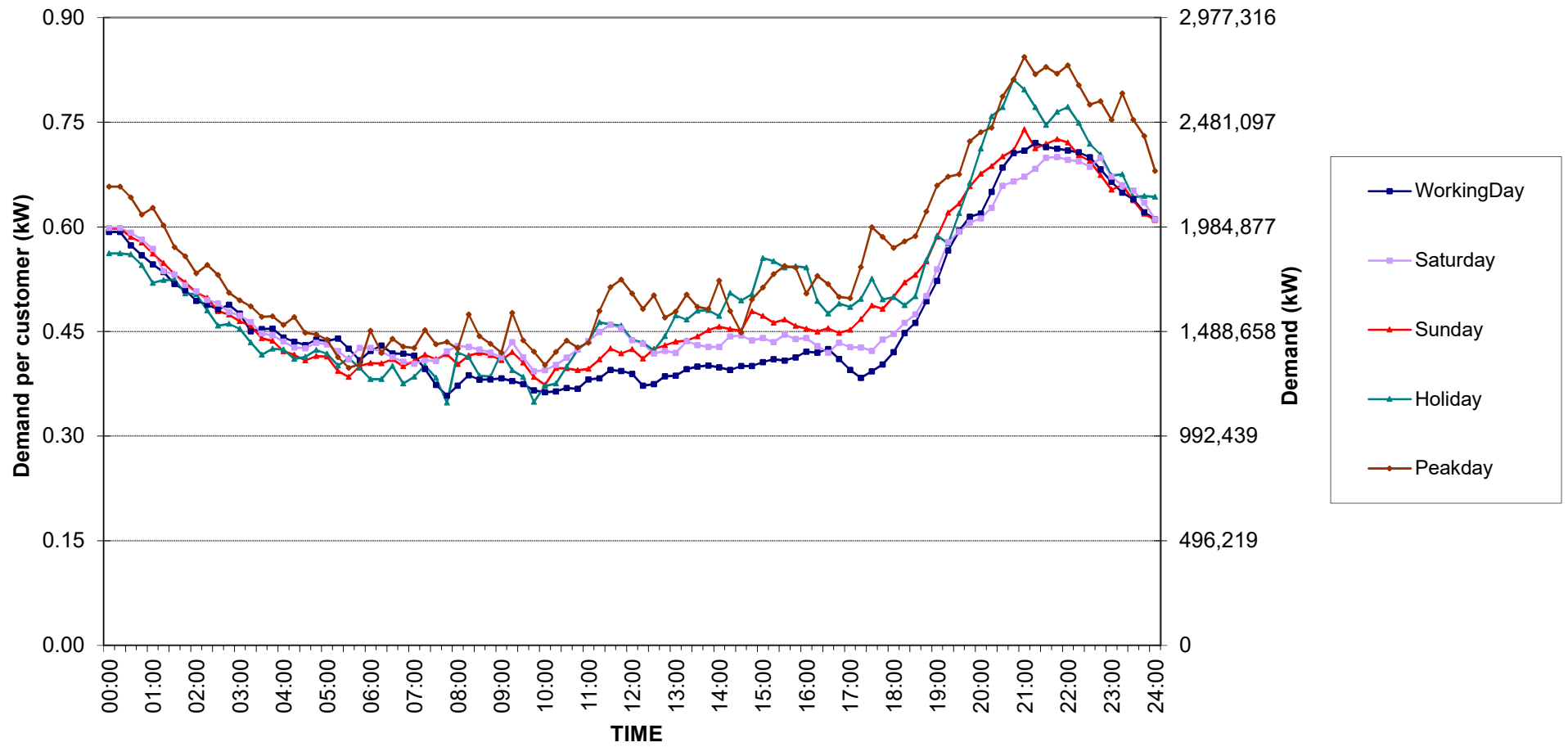


กราฟรูปที่ 2

# Residential Load Profile

Date: 1 Aug, 2019 to 31 Aug, 2019

Number of sample customers = 171

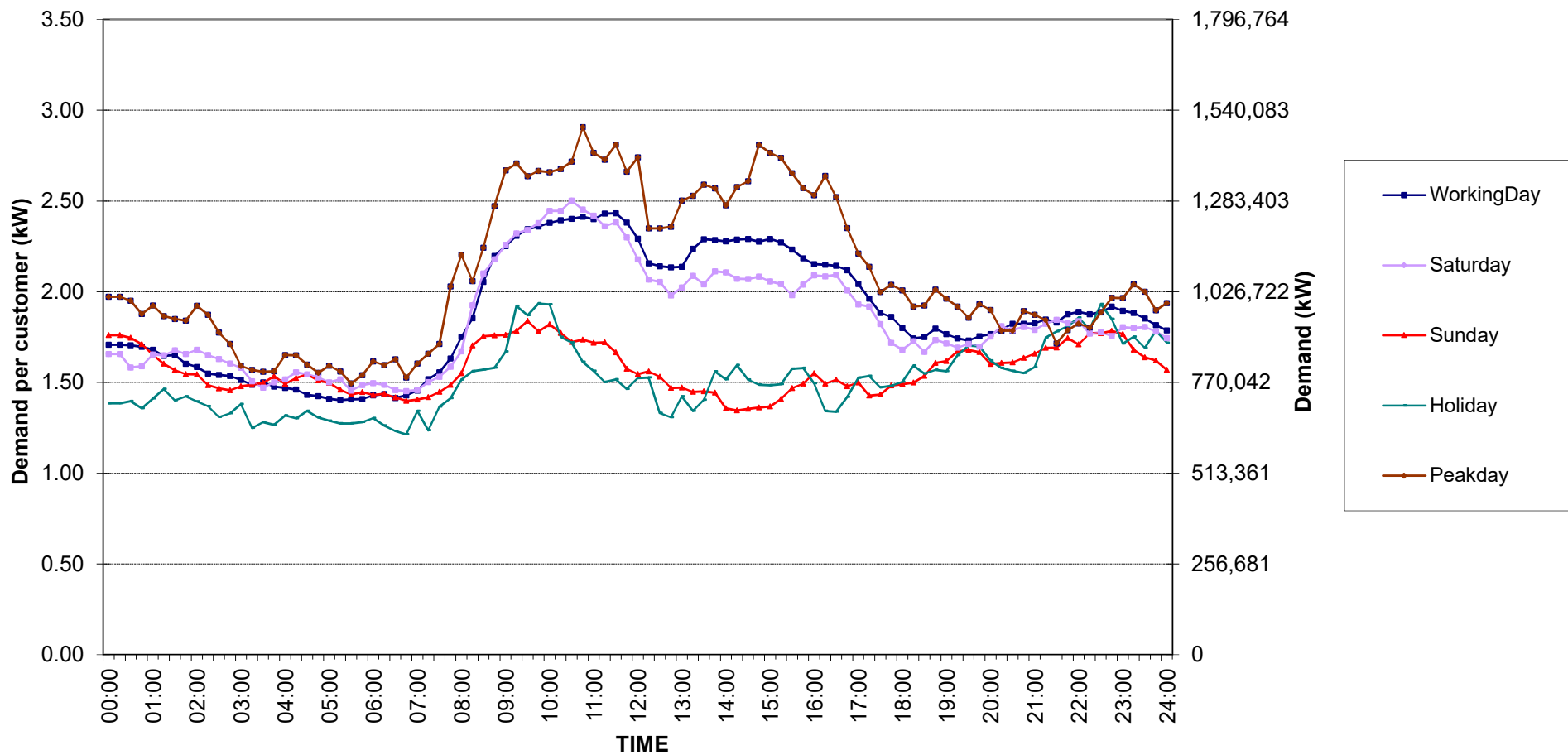


กราฟรูปที่ 3

### Small General Services Load Profile

Date: 1 Aug, 2019 to 31 Aug, 2019

Number of sample customers = 258

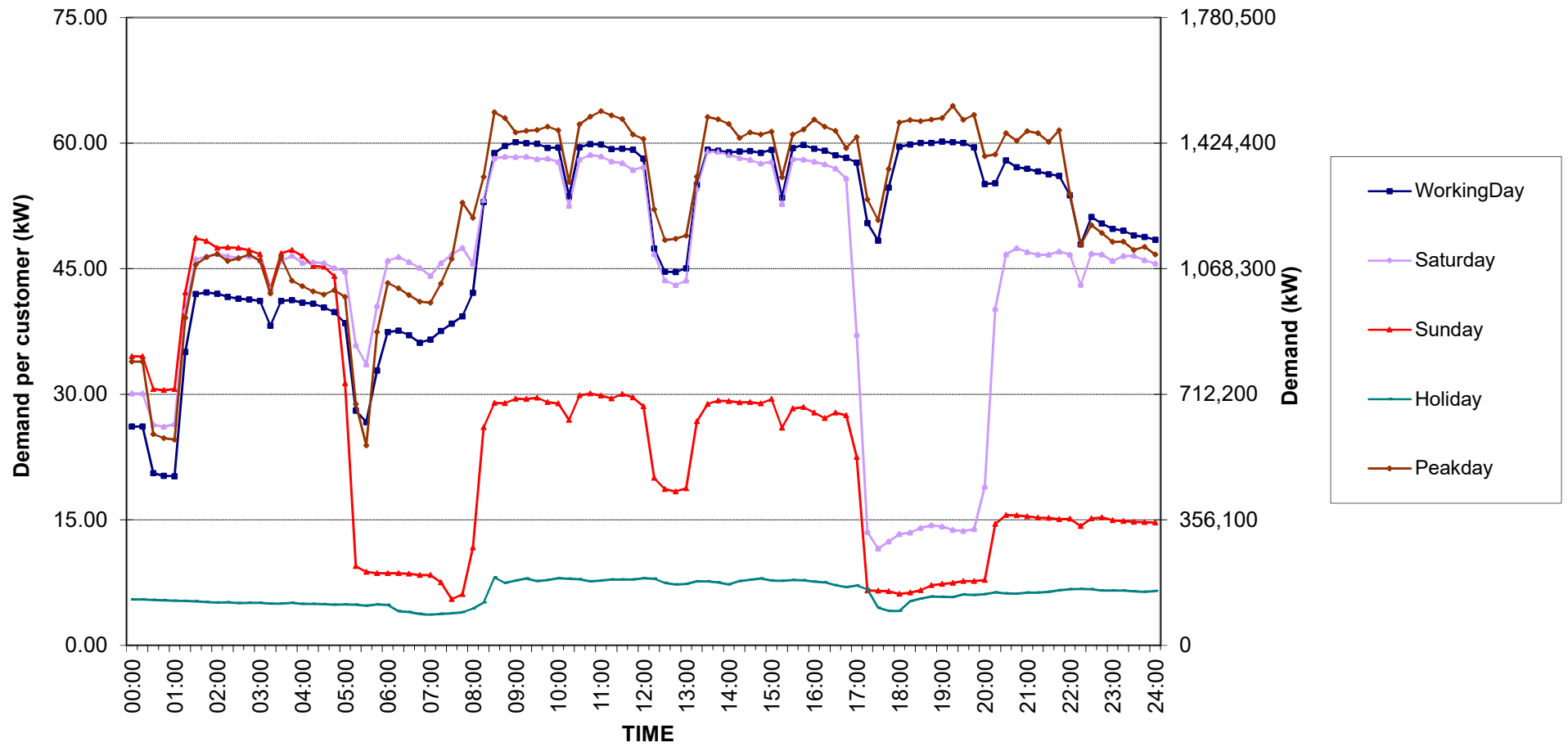


กราฟรูปที่ 4

# Medium General Services Load Profile

Date: 1 Aug, 2019 to 31 Aug, 2019

Number of sample customers = 165



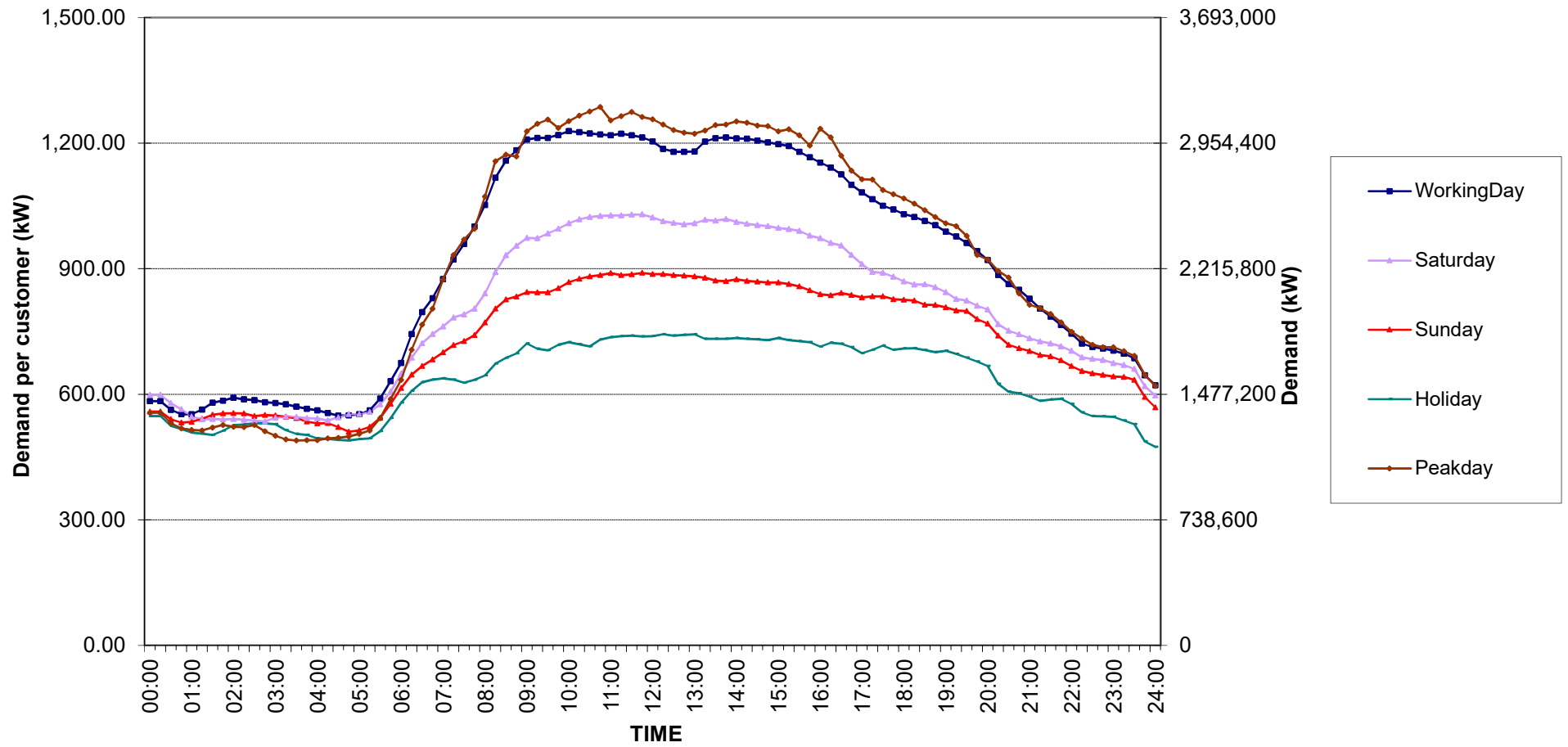
กราฟรูปที่ 5



# Large General Services Load Profile

Date: 1 Aug, 2019 to 31 Aug, 2019

Number of sample customers = 284

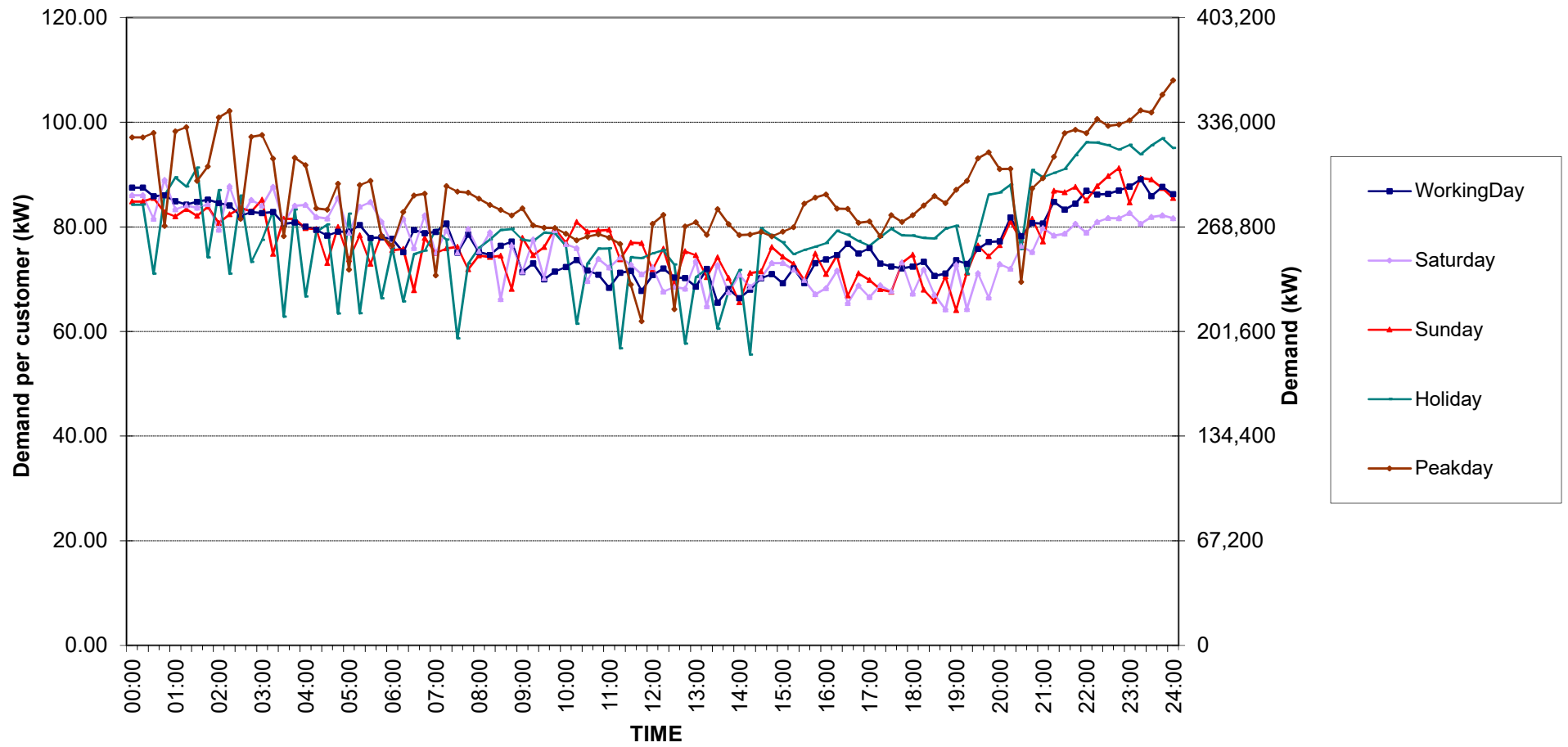


กราฟรูปที่ 6

### Specific Business Load Profile

Date: 1 Aug, 2019 to 31 Aug, 2019

Number of sample customers = 74

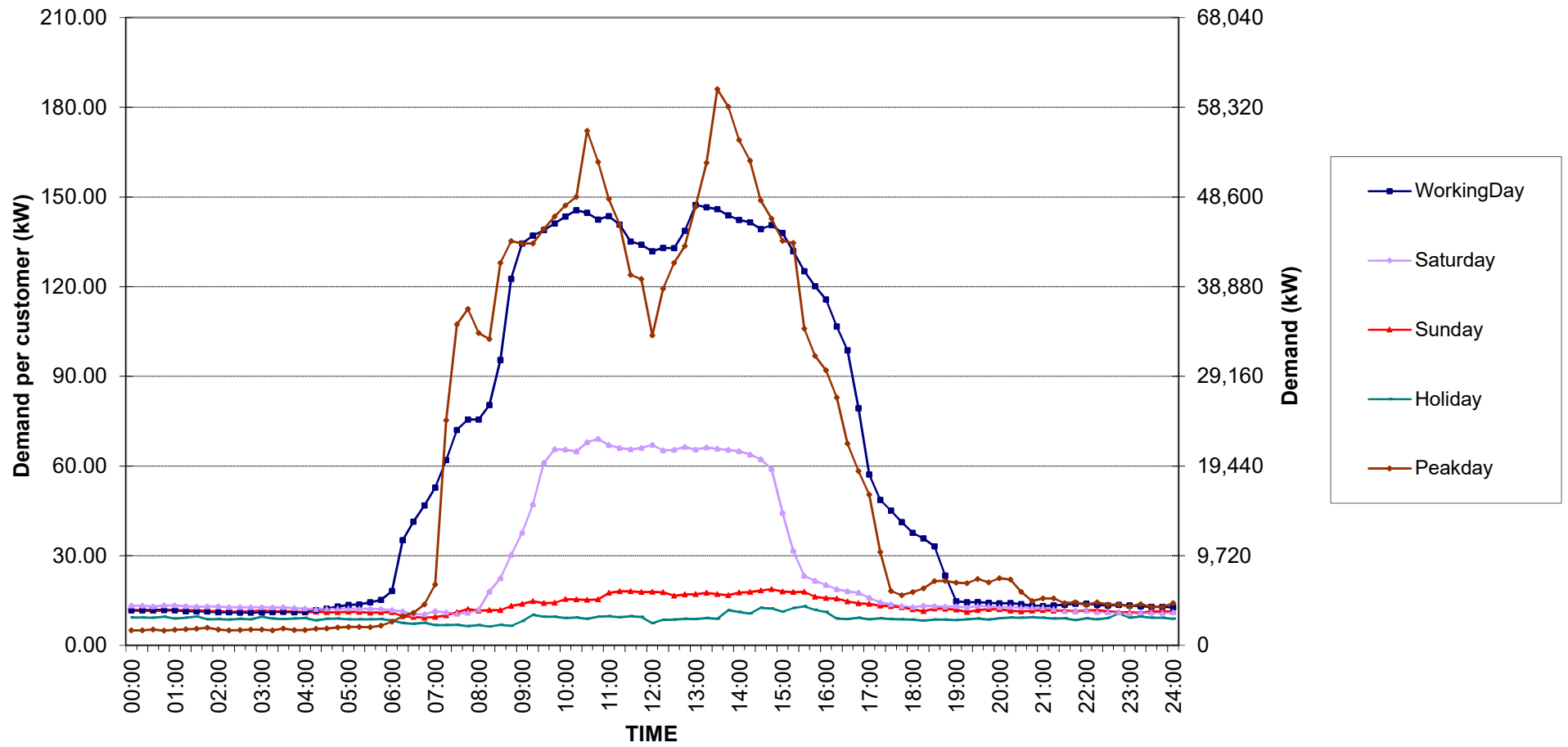


กราฟรูปที่ 7

# Non-profit organizations Load Profile

Date: 1 Aug, 2019 to 31 Aug, 2019

Number of sample customers = 50

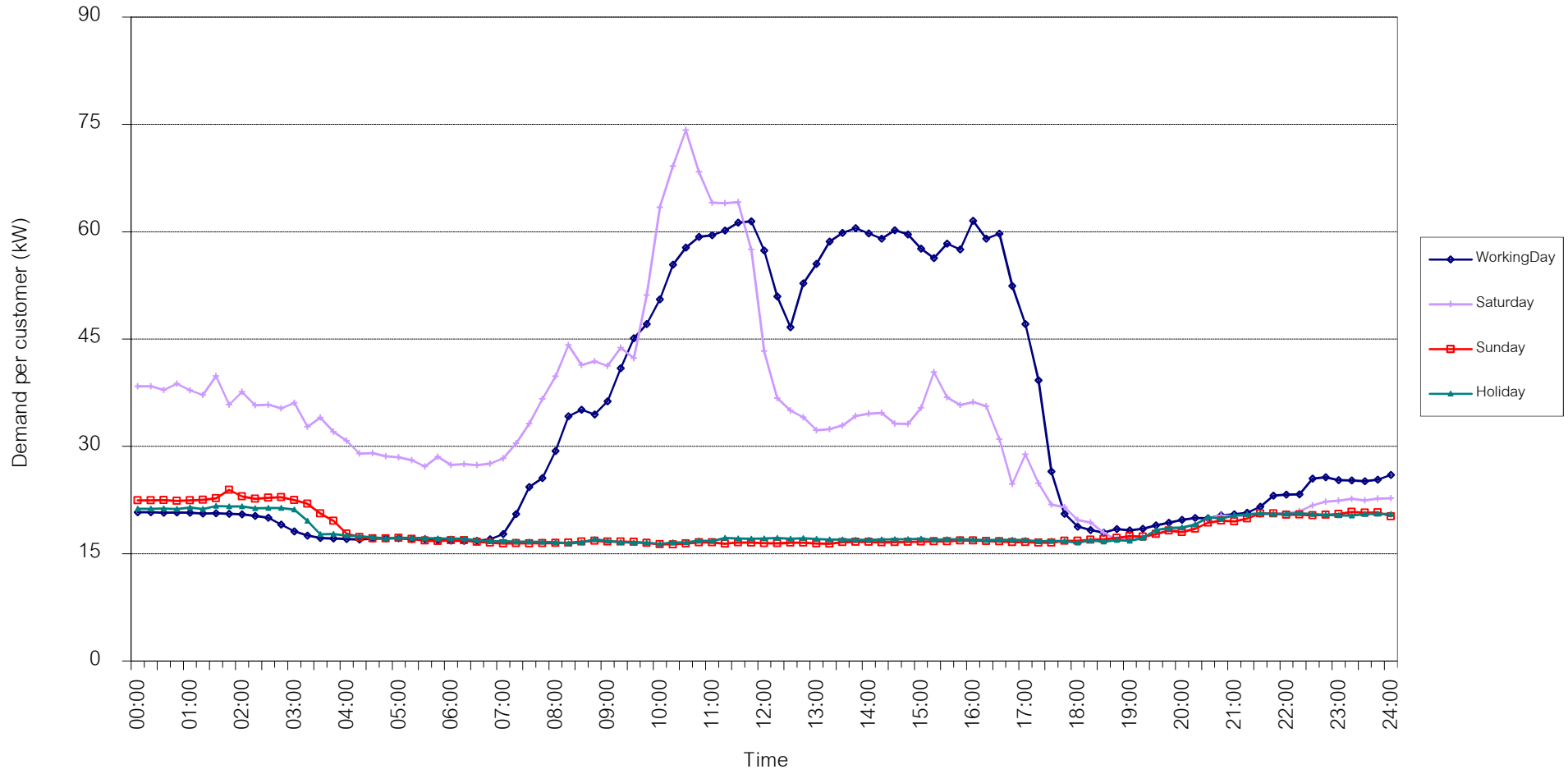


กราฟรูปที่ 8

TSIC 31 (Food Processing) Load Profile

Date: 1 Aug, 2019 to 31 Aug, 2019

Number of sample customers = 32

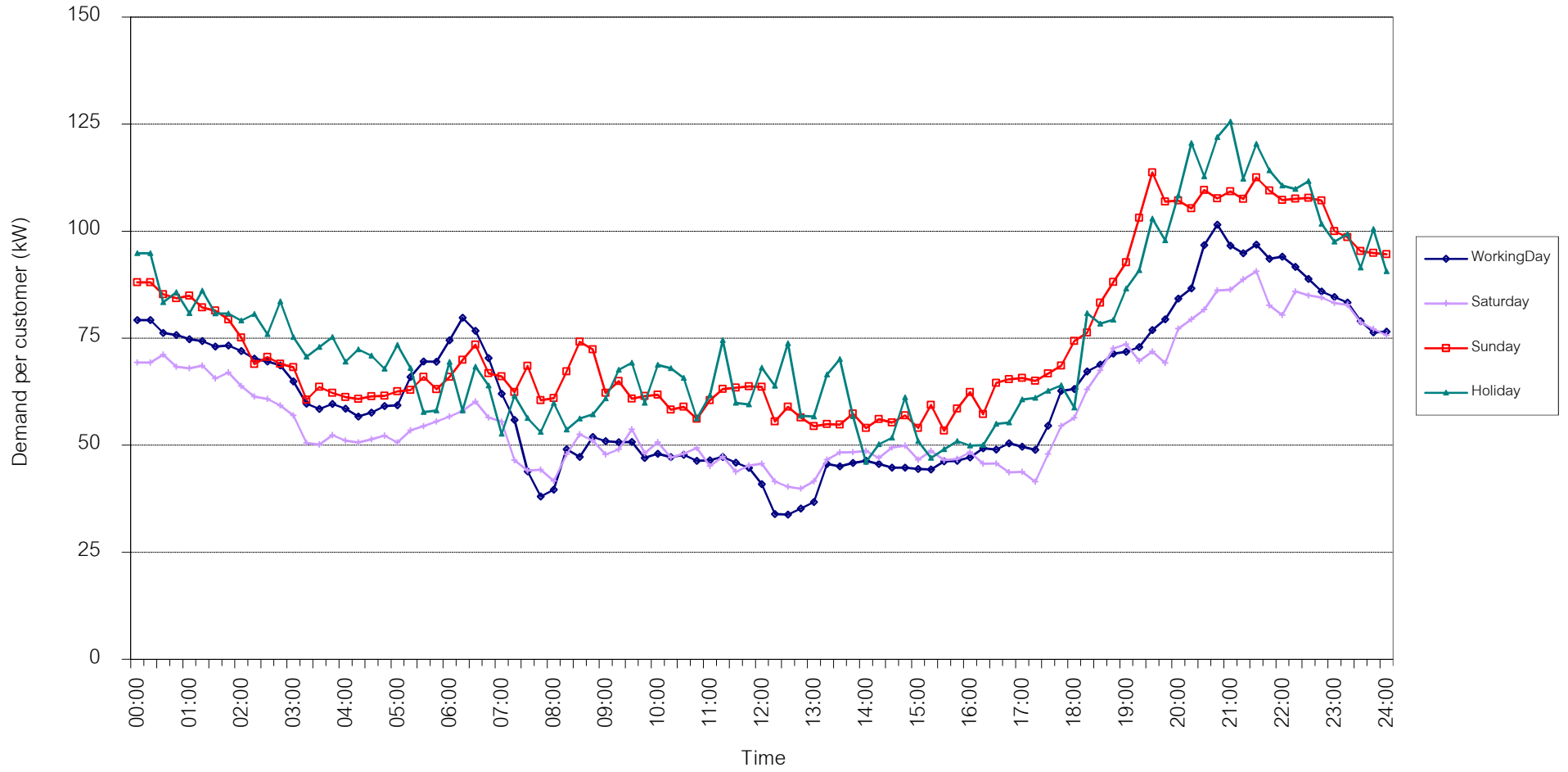


กราฟรูปที่ 9

TSIC 32 (Textiles) Load Profile

Date: 1 Aug, 2019 to 31 Aug, 2019

Number of sample customers = 67

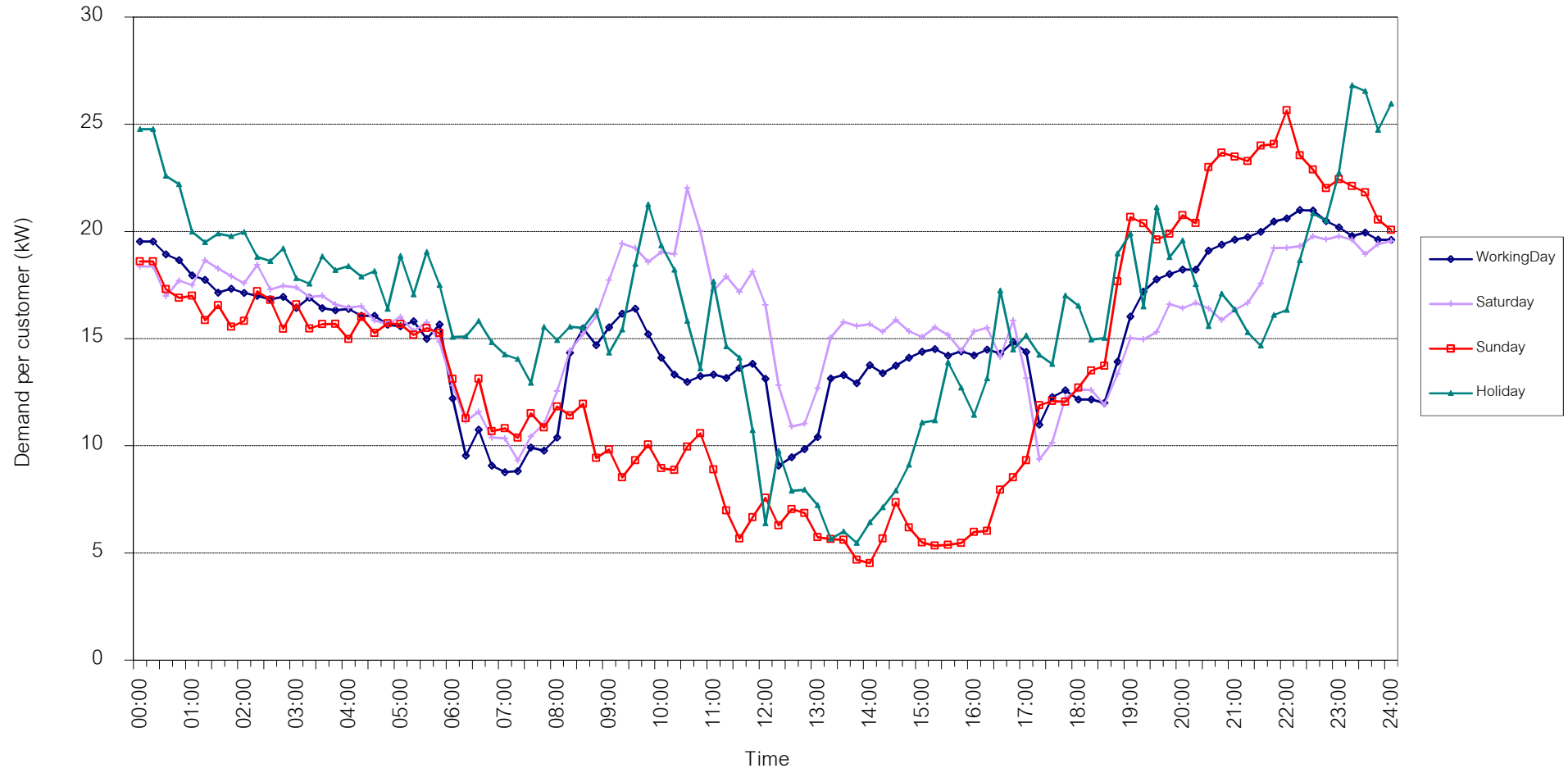


กราฟรูปที่ 10

TSIC 34 (Paper & Printing) Load Profile

Date: 1 Aug, 2019 to 31 Aug, 2019

Number of sample customers = 12

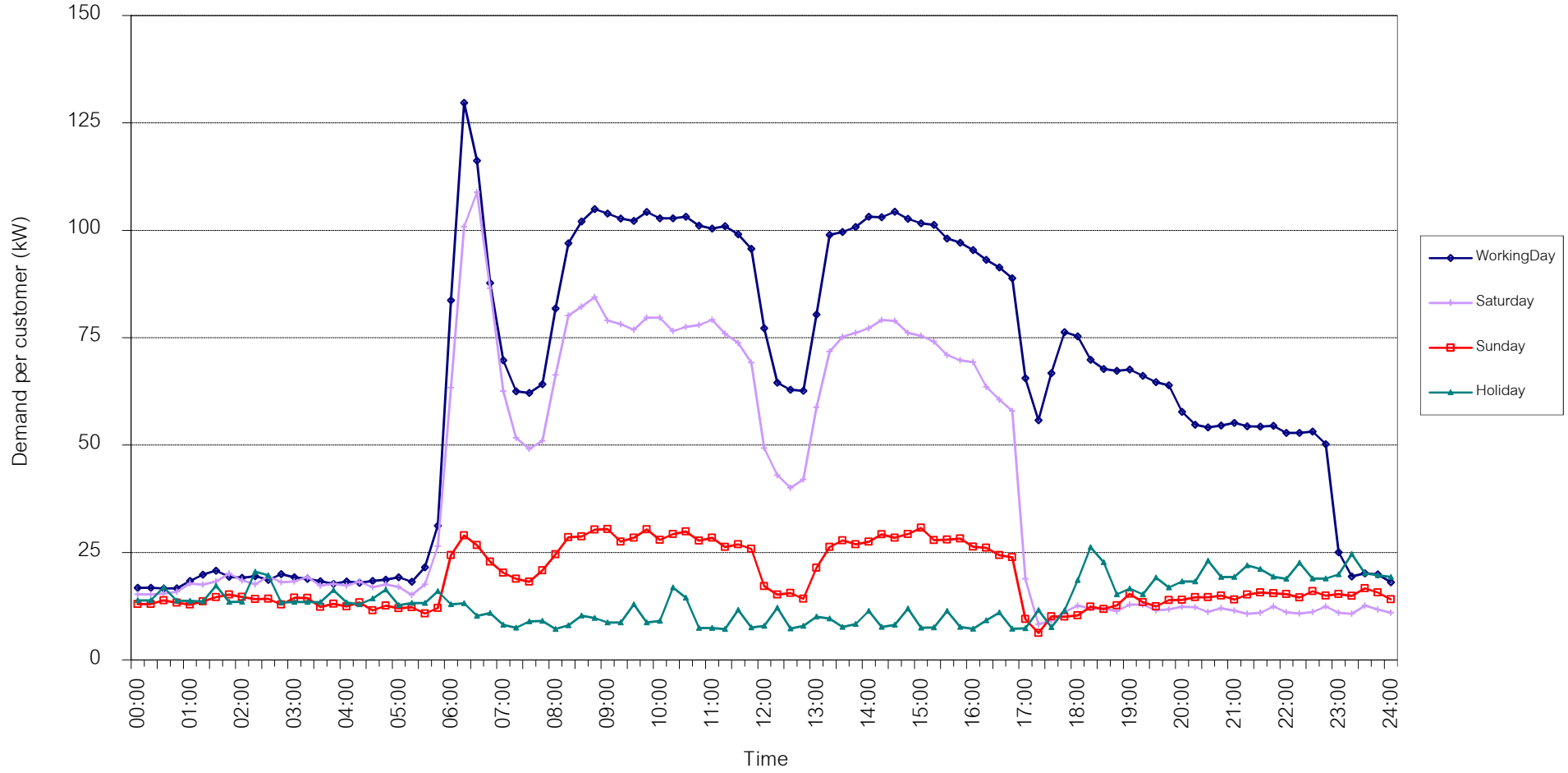


กราฟรูปที่ 11

TSIC 35 (Chemical & Petroleum) Load Profile

Date: 1 Aug, 2019 to 31 Aug, 2019

Number of sample customers = 75

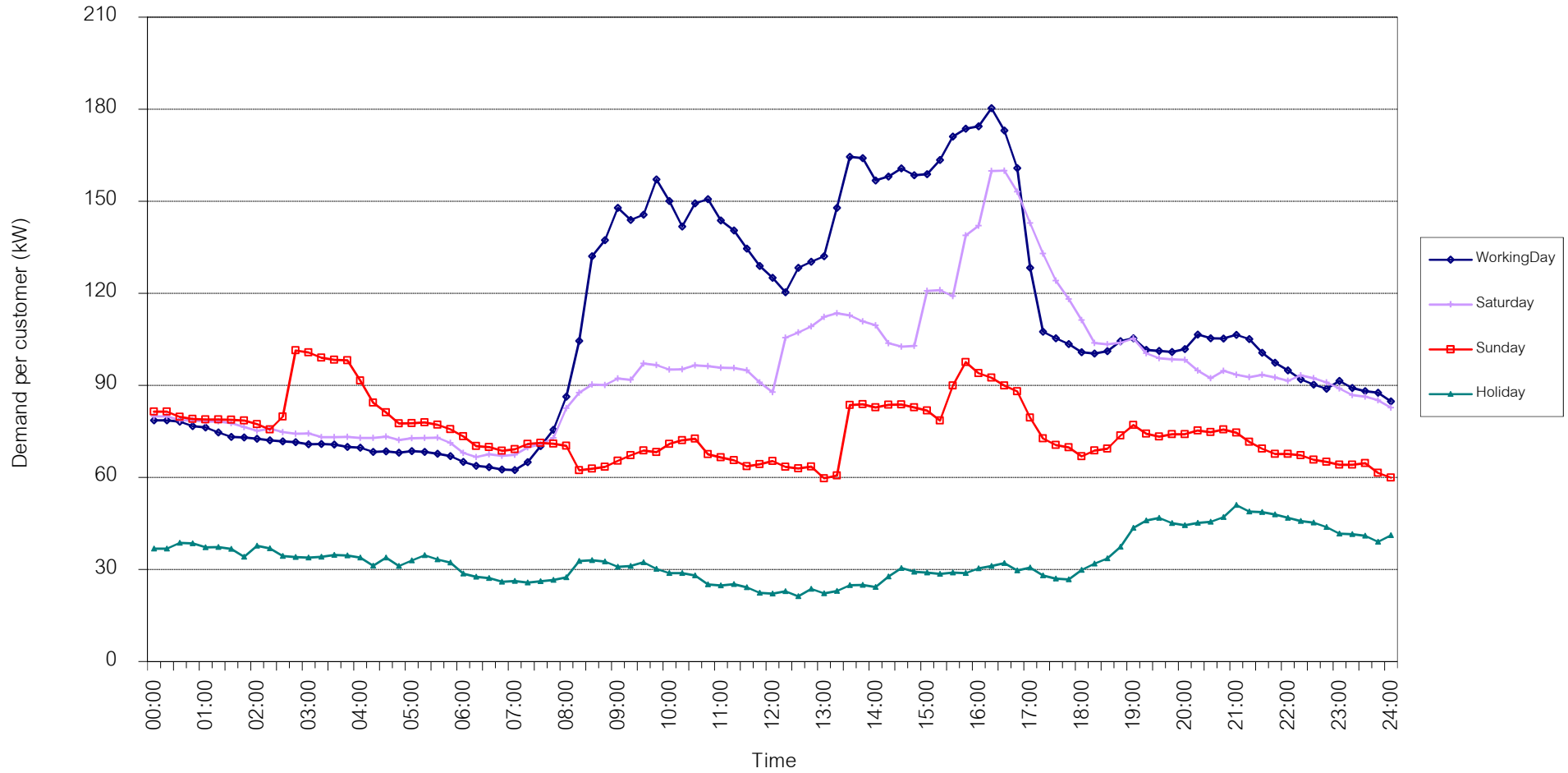


กราฟรูปที่ 12

TSIC 38 (Fabricated Metal Products) Load Profile

Date: 1 Aug, 2019 to 31 Aug, 2019

Number of sample customers = 62



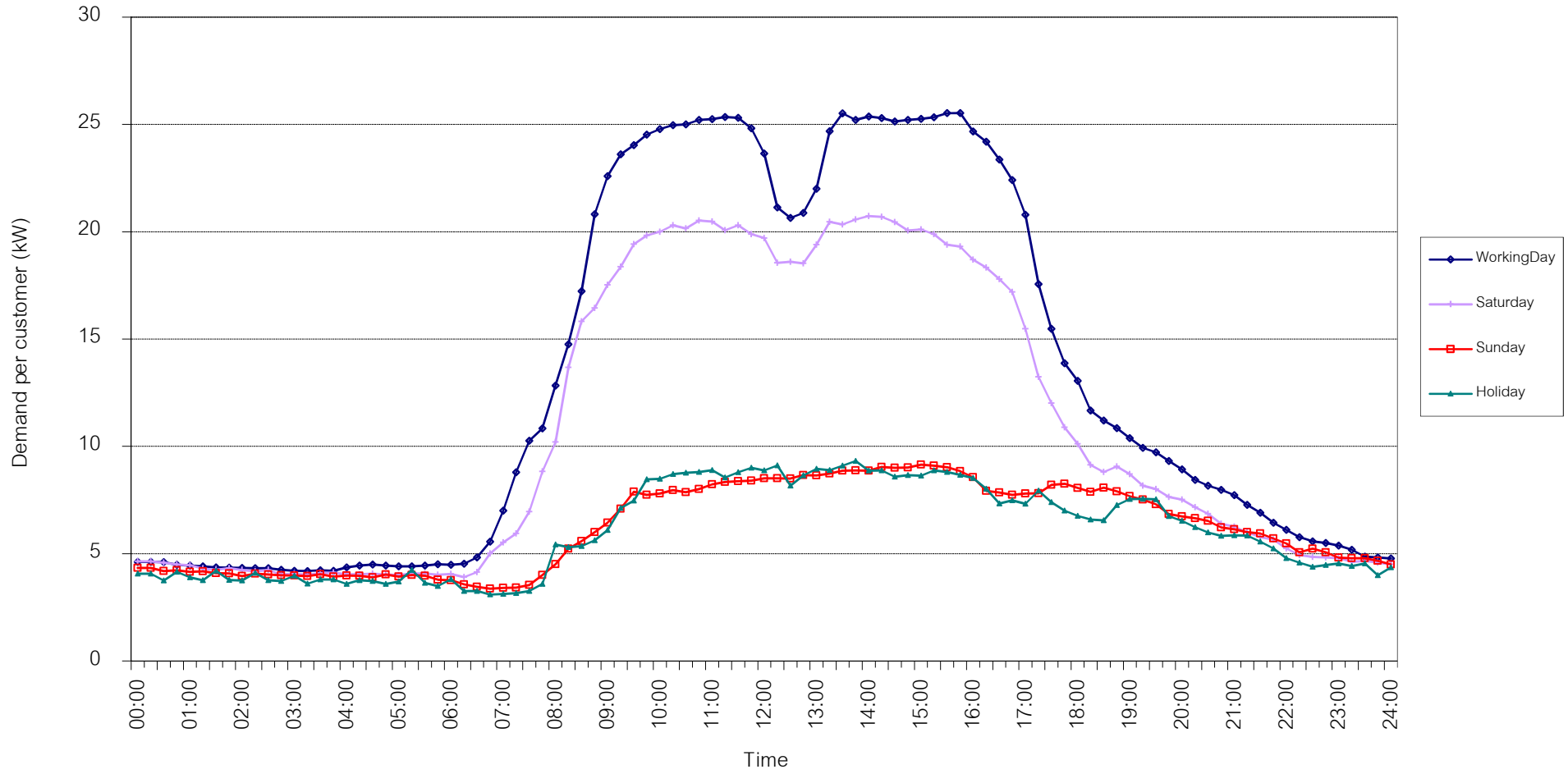
กราฟรูปที่ 13



TSIC 61 (Wholesale Trade) Load Profile

Date: 1 Aug, 2019 to 31 Aug, 2019

Number of sample customers = 48

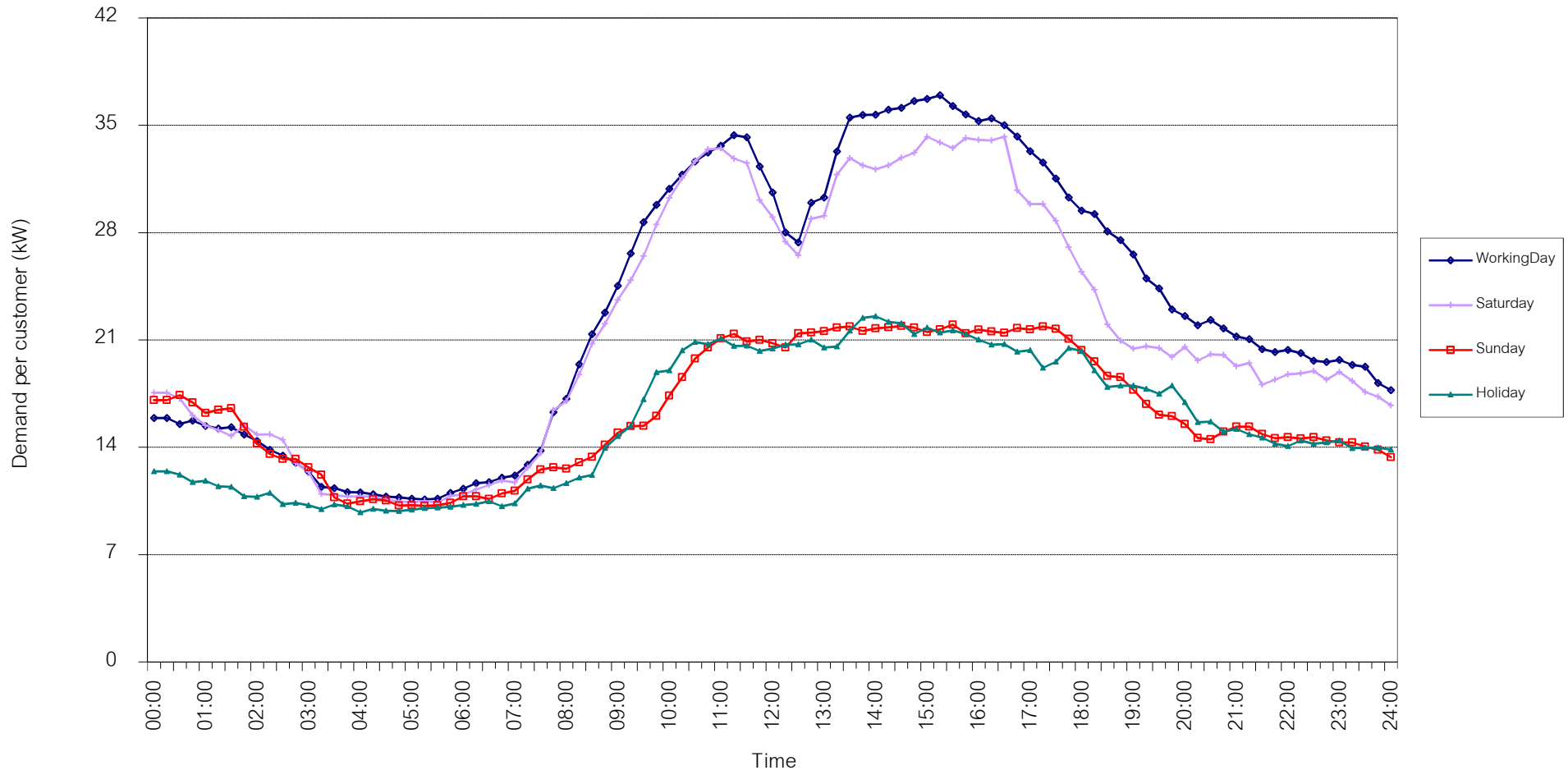


กราฟรูปที่ 14

TSIC 62 (Retail Trade) Load Profile

Date: 1 Aug, 2019 to 31 Aug, 2019

Number of sample customers = 93

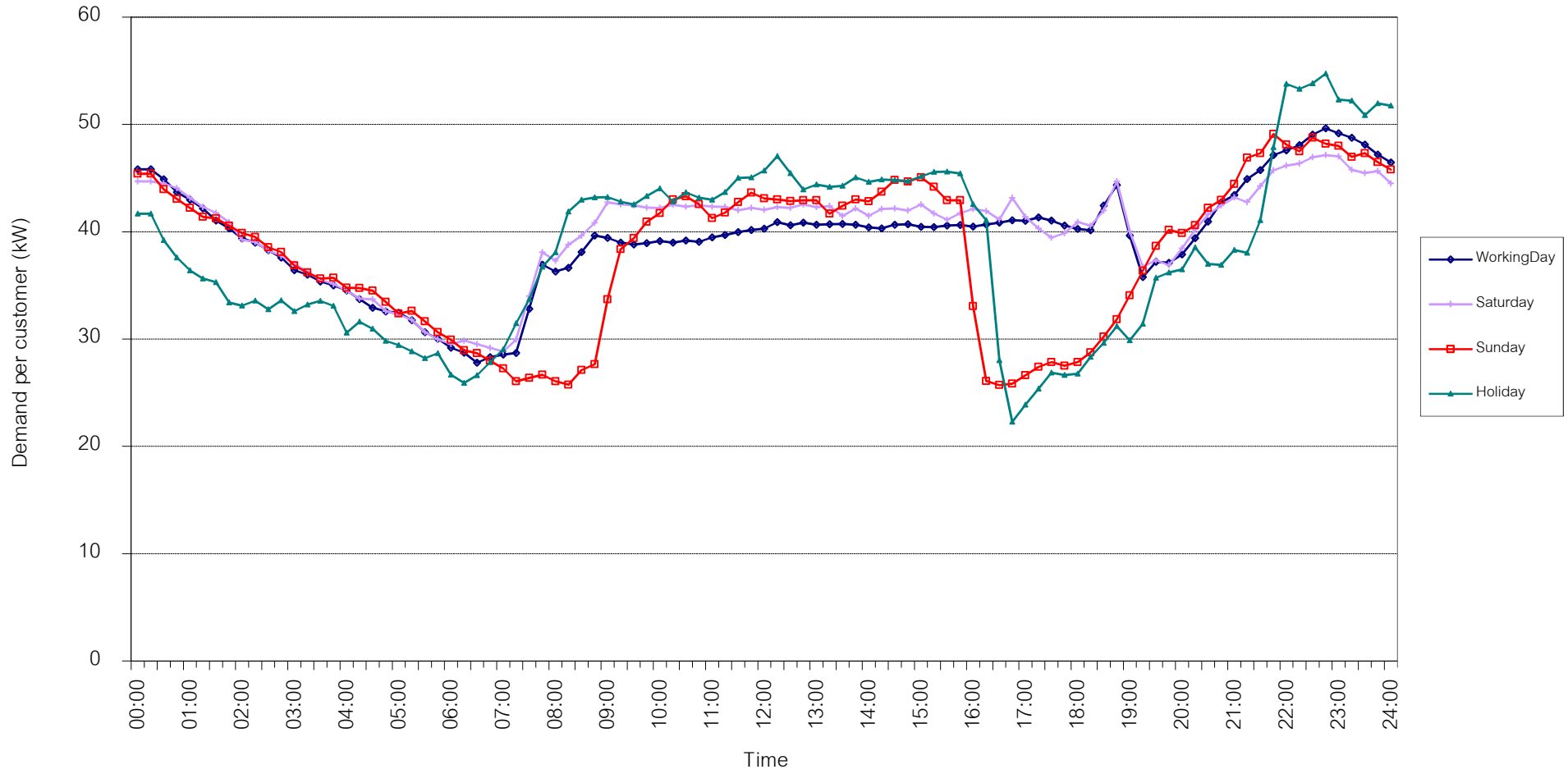


กราฟรูปที่ 15

TSIC 63 (Hotels and restaurants) Load Profile

Date: 1 Aug, 2019 to 31 Aug, 2019

Number of sample customers = 117

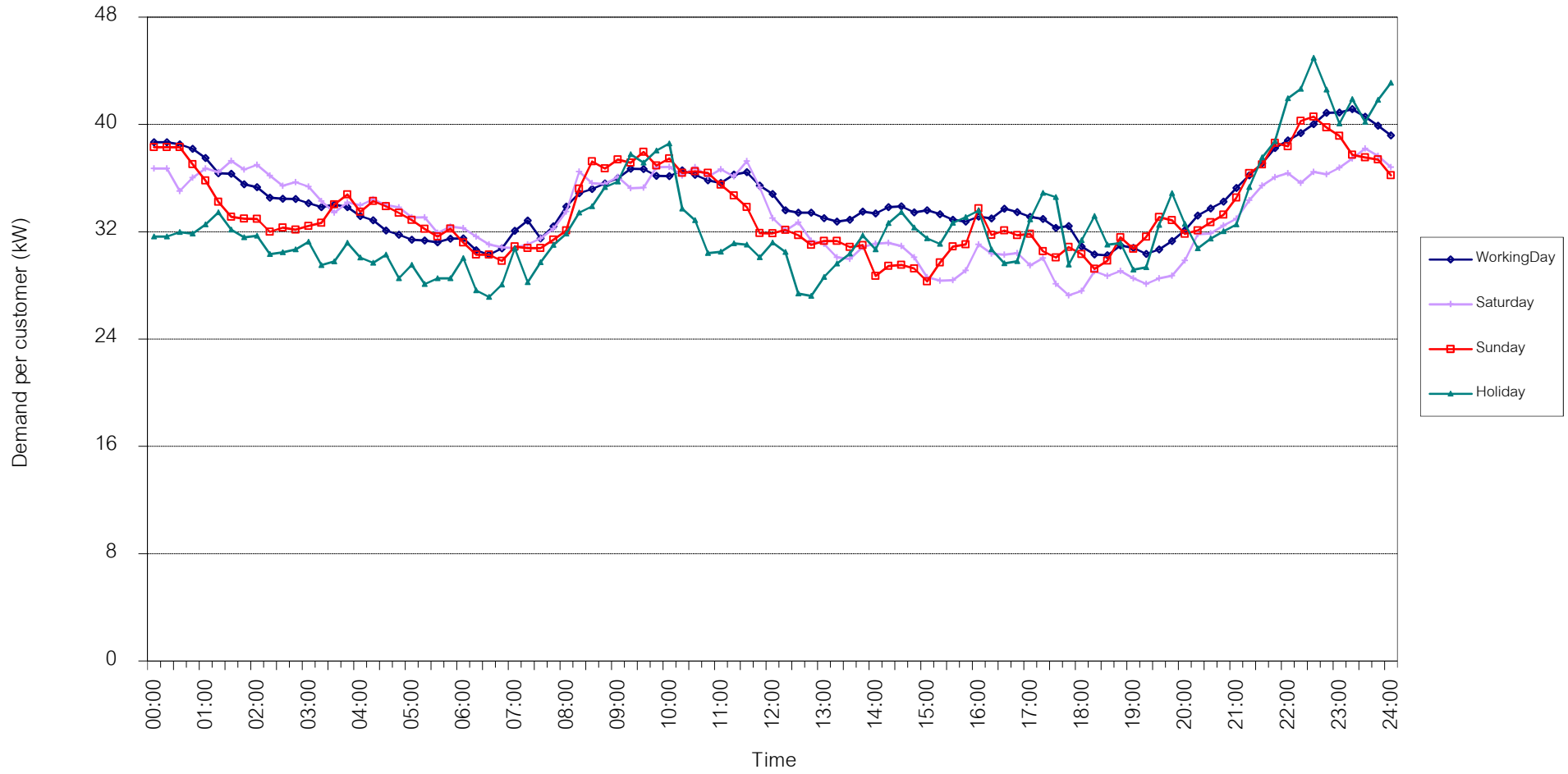


กราฟรูปที่ 16

TSIC 83 (Real Estate) Load Profile

Date: 1 Aug, 2019 to 31 Aug, 2019

Number of sample customers = 47

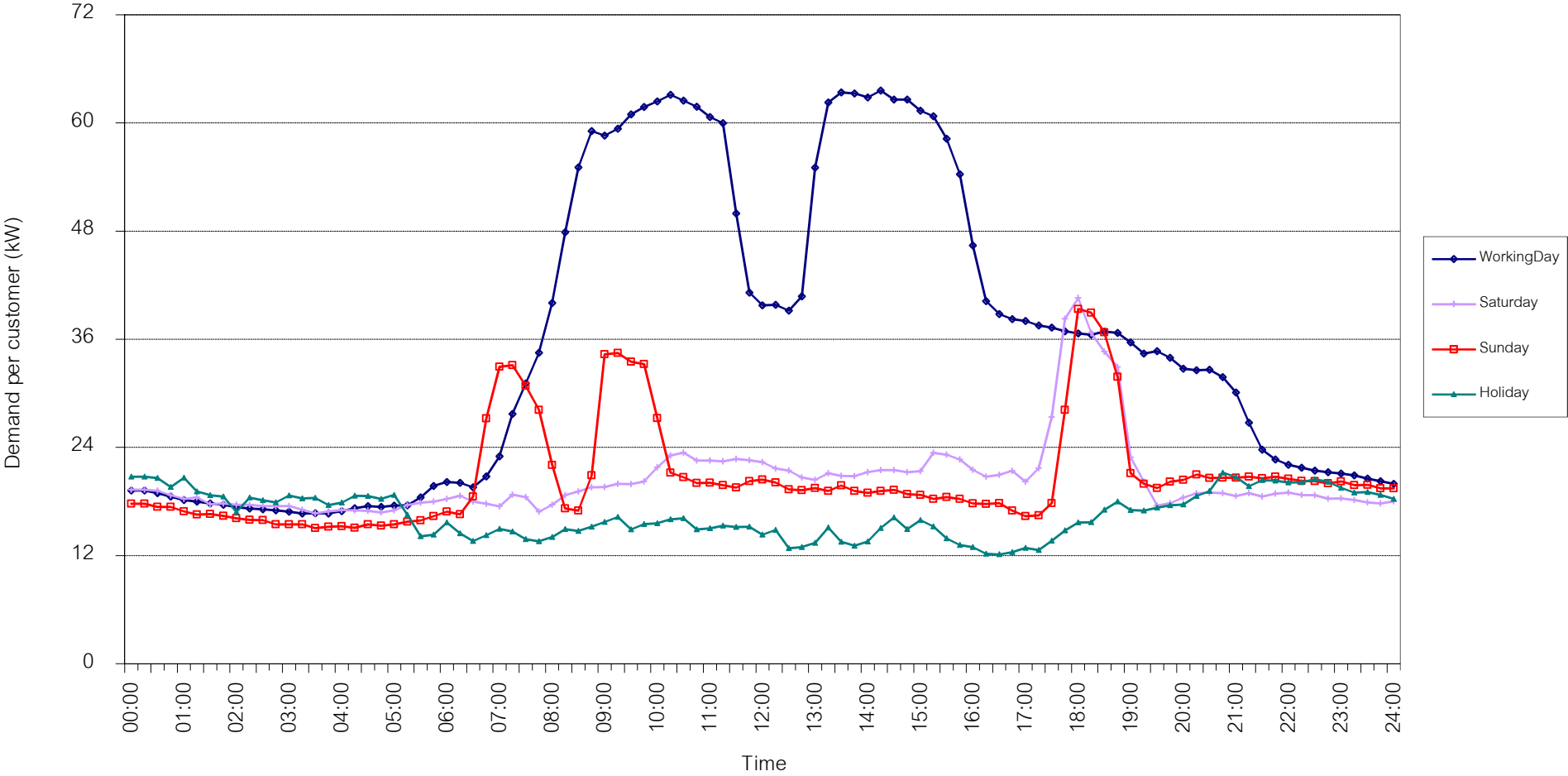


กราฟรูปที่ 17

TSIC 93 (Social Services) Load Profile

Date: 1 Aug, 2019 to 31 Aug, 2019

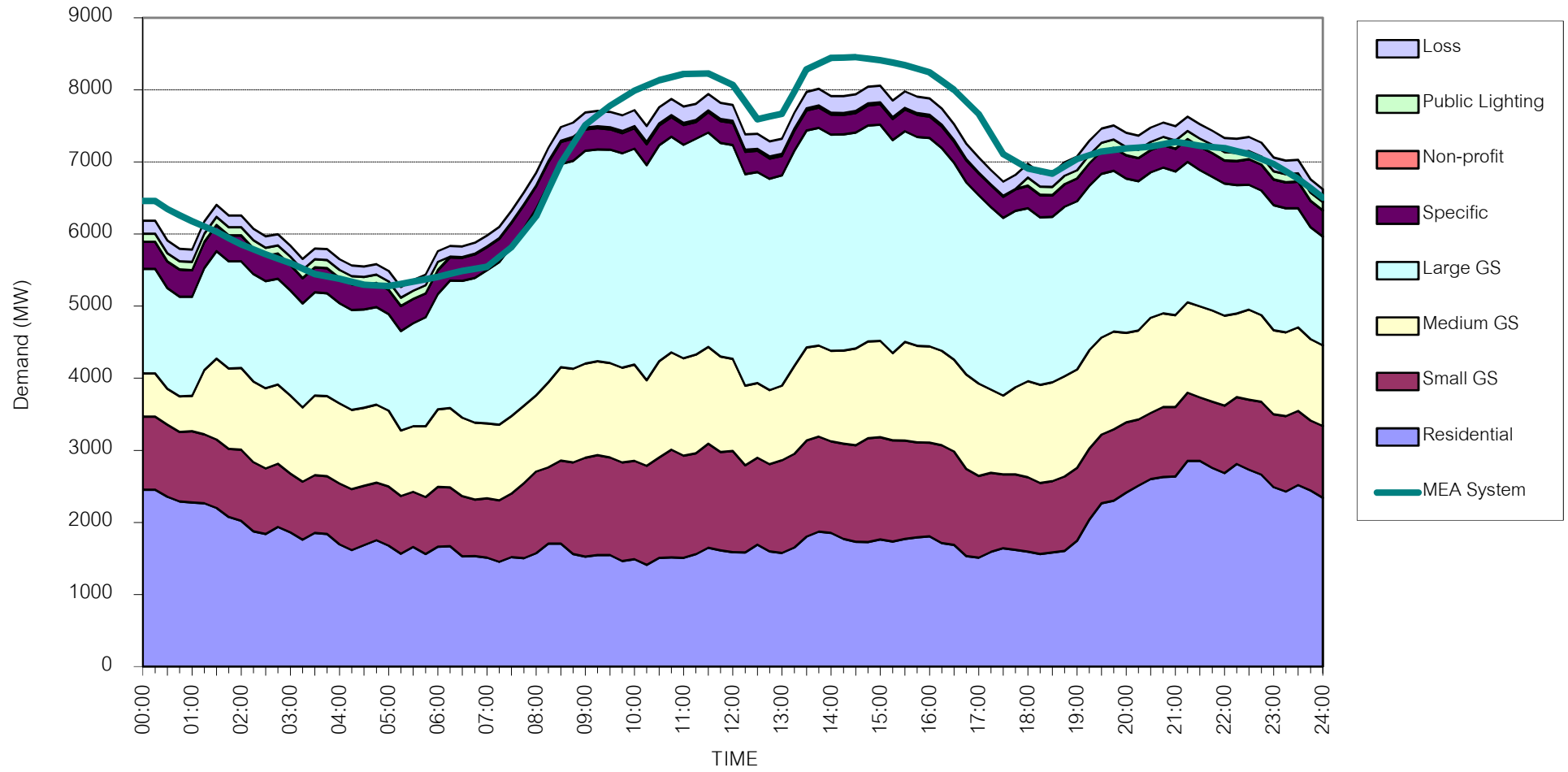
Number of sample customers = 27



กราฟรูปที่ 18

# MEA's System Load Profile

Peak Day 16 Aug, 2019 at 14:30



กราฟรูปที่ 19