



# ข้อมูลการศึกษาลักษณะการใช้ไฟฟ้า เดือน พฤศจิกายน 2550



Table 1-1

COINCIDENT WITH SYSTEM LOAD RESEARCH SYSTEM'S PEAK ON November 04,2007 time 15:00 6,328.37 MW  
( MEA SYSTEM'S PEAK ON November 04,2007 time 14:30 6,695.74 MW )

CLASS	Number of Customers	Kilowatt hours	Coincident Peak (MEA System Peak at time14:30)		Coincident Peak (Load Research System Peak at time 15:00)		Sector Diversified Demand		
			MW	Contribution (%)	MW	Contribution (%)	Max MW.	Date	Time
Residential	2,177,686	691,963,594	604.67	9.71	677.89	10.71	1,866.06	18 Nov 07	23:00
Small General Service	471,796	484,532,747	1,027.15	16.49	1,020.13	16.12	1,097.38	13 Nov 07	10:30
Medium General Service	19,940	648,663,855	1,466.31	23.54	1,473.81	23.29	1,592.71	14 Nov 07	13:45
Large General Service	1,599	1,266,308,109	2,437.12	39.12	2,468.84	39.01	2,519.72	15 Nov 07	14:45
Specific Business	2,254	139,843,883	249.90	4.01	244.43	3.86	253.30	17 Nov 07	18:45
Government and non Profit organization	10,746	96,989,759	349.97	5.62	349.20	5.52	460.76	15 Nov 07	14:00
Public Lighting	-	18,731,305	0.00	0.00	0.00	0.00	50.41	-	-
Loss	-	49,480,903	94.50	1.52	94.06	1.49	94.50	14 Nov 07	14:30
TOTAL	2,684,021	3,396,514,155	6,229.61	100	6,328.37	100	6,328	4 Nov 07	15:00



Table 1-2

Number of sample customers on November, 2007

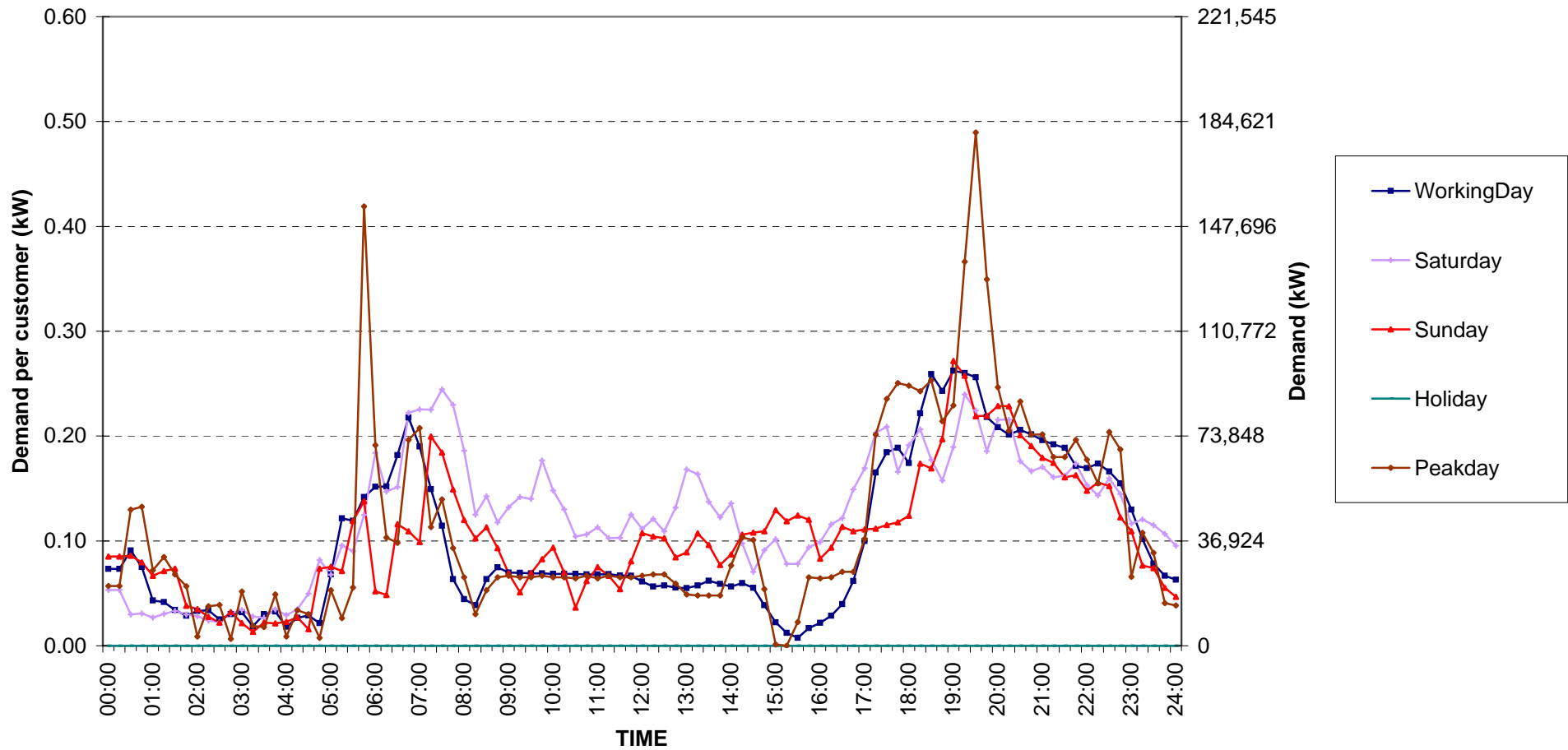
CLASS	Number of sample customers (Target)	Number of sample customers (Collected)
Residential	191	191
Small General Service	297	297
Medium General Service	163	163
Large General Service	328	328
Specific Business	76	76
Government and Non-profit Organization	68	68
TOTAL	1,123	1,123



Residential ( Energy Consumption less than 150 kWh per month )

Date: 1 Nov, 2007 to 30 Nov, 2007

Number of sample customers = 10



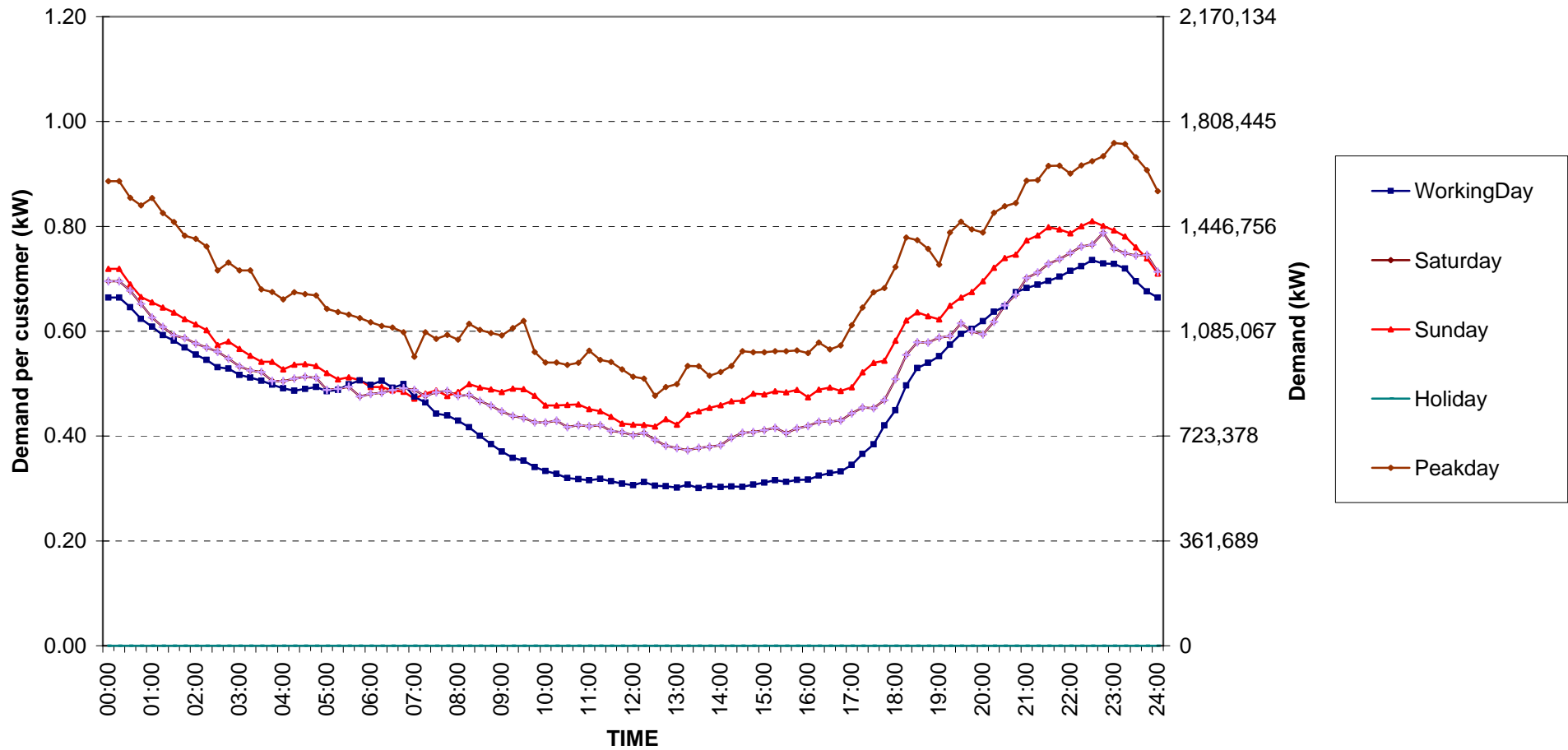
กราฟรูปที่ 1



## Residential ( Energy Consumption more than 150 kWh per month )

Date: 1 Nov, 2007 to 30 Nov, 2007

Number of sample customers = 181



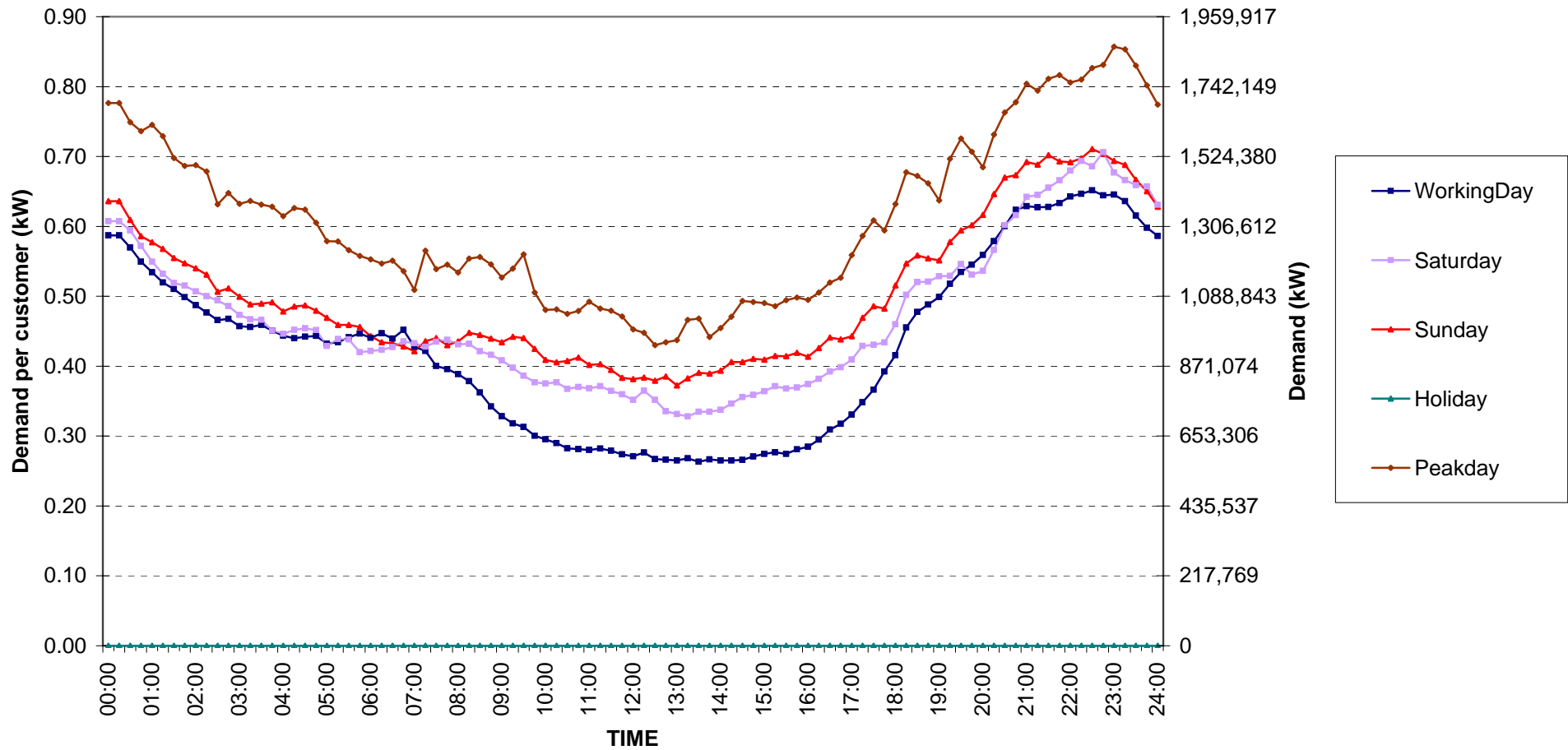
กราฟรูปที่ 2



## Residential Load Profile

Date: 1 Nov, 2007 to 30 Nov, 2007

Number of sample customers = 191



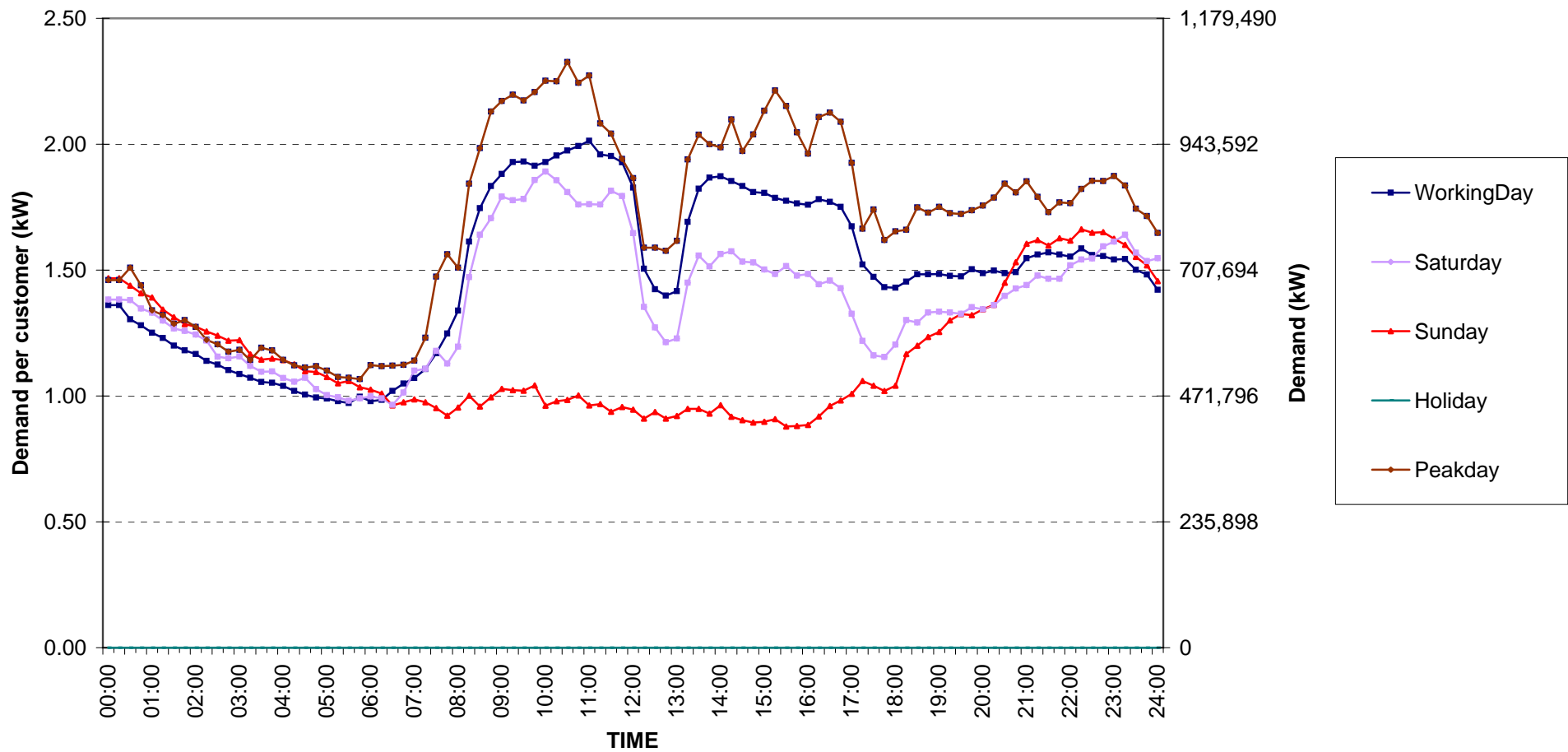
กราฟรูปที่ 3



Small General Services Load Profile

Date: 1 Nov, 2007 to 30 Nov, 2007

Number of sample customers = 297



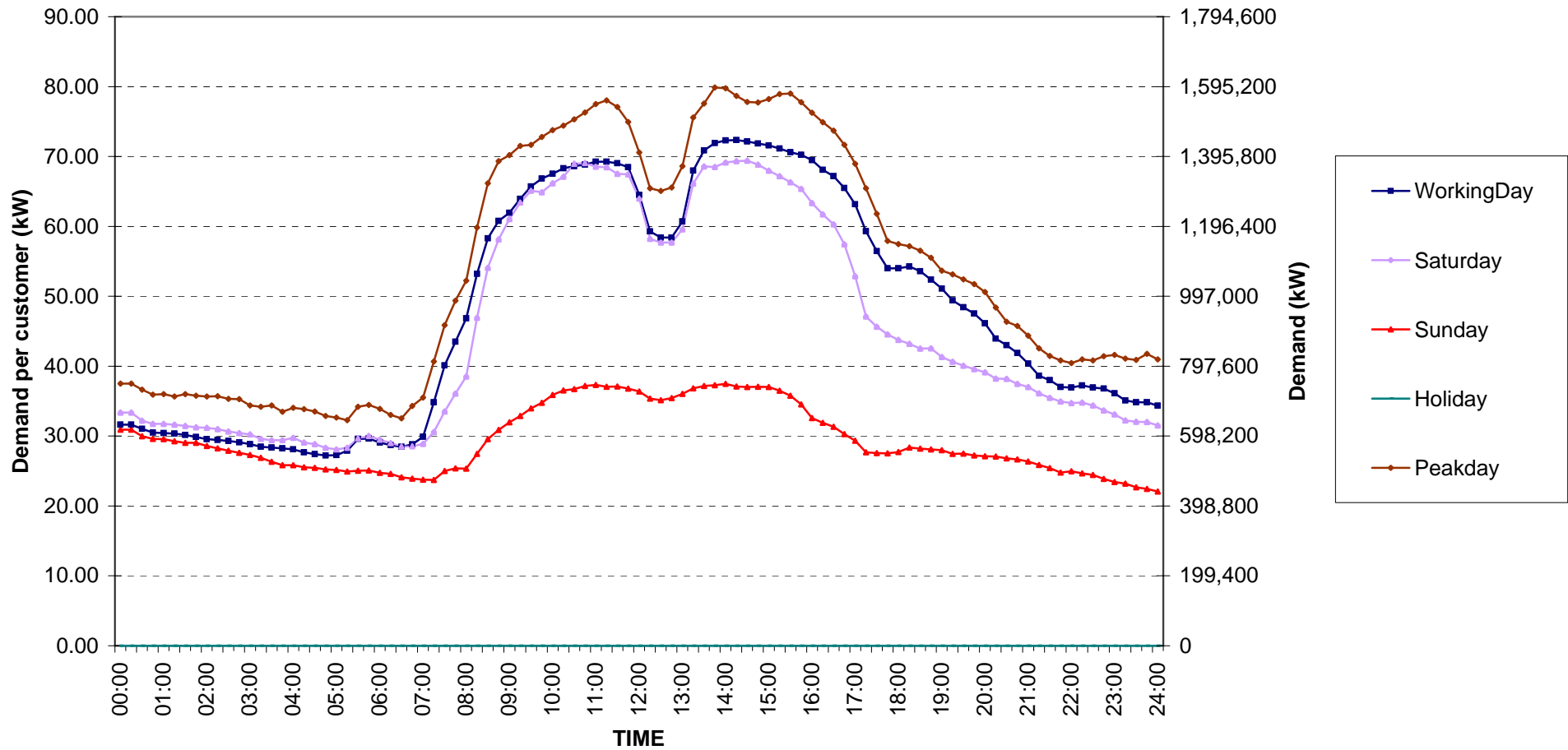
กราฟรูปที่ 4



Medium General Services Load Profile

Date: 1 Nov, 2007 to 30 Nov, 2007

Number of sample customers = 163



กราฟรูปที่ 5

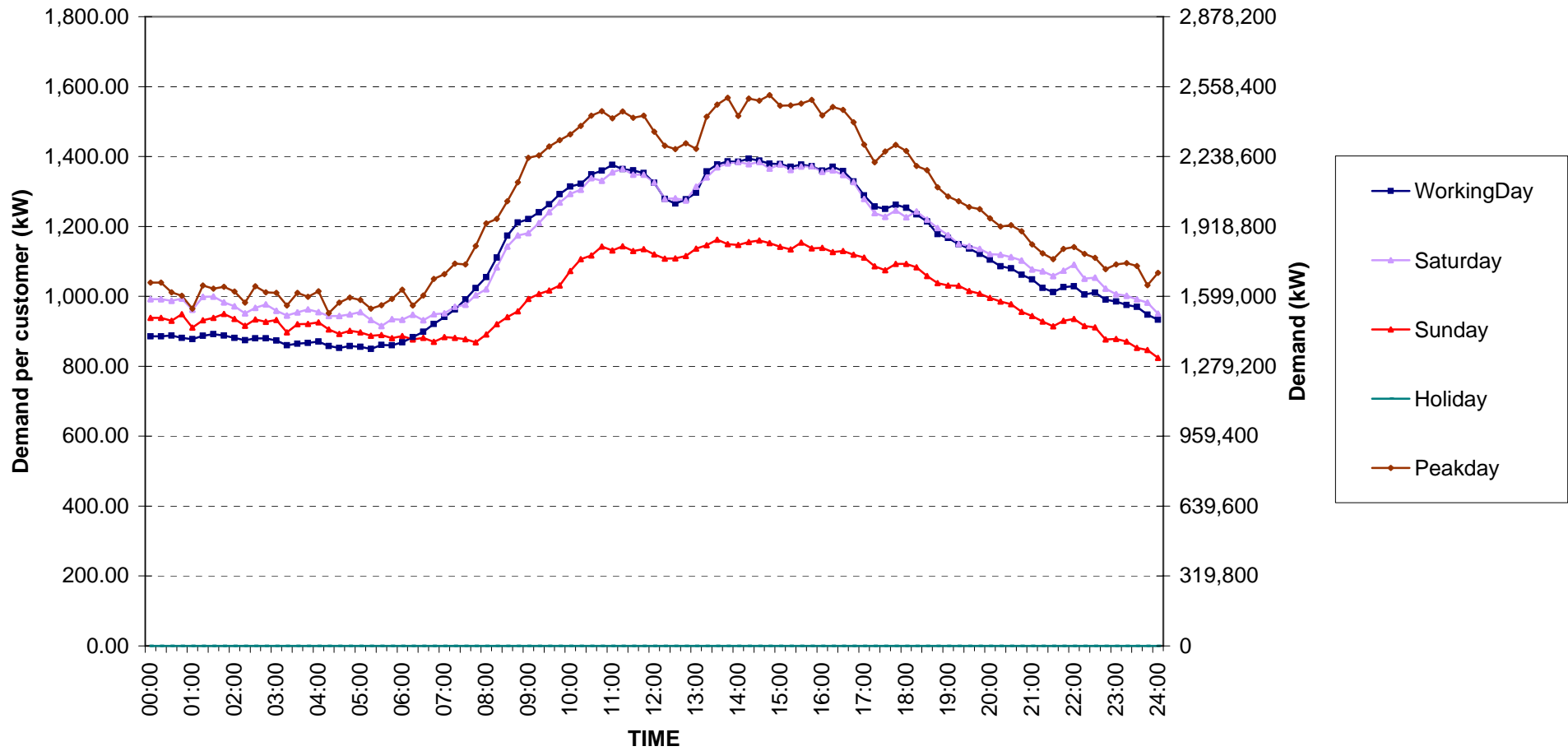




Large General Services Load Profile

Date: 1 Nov, 2007 to 30 Nov, 2007

Number of sample customers = 328



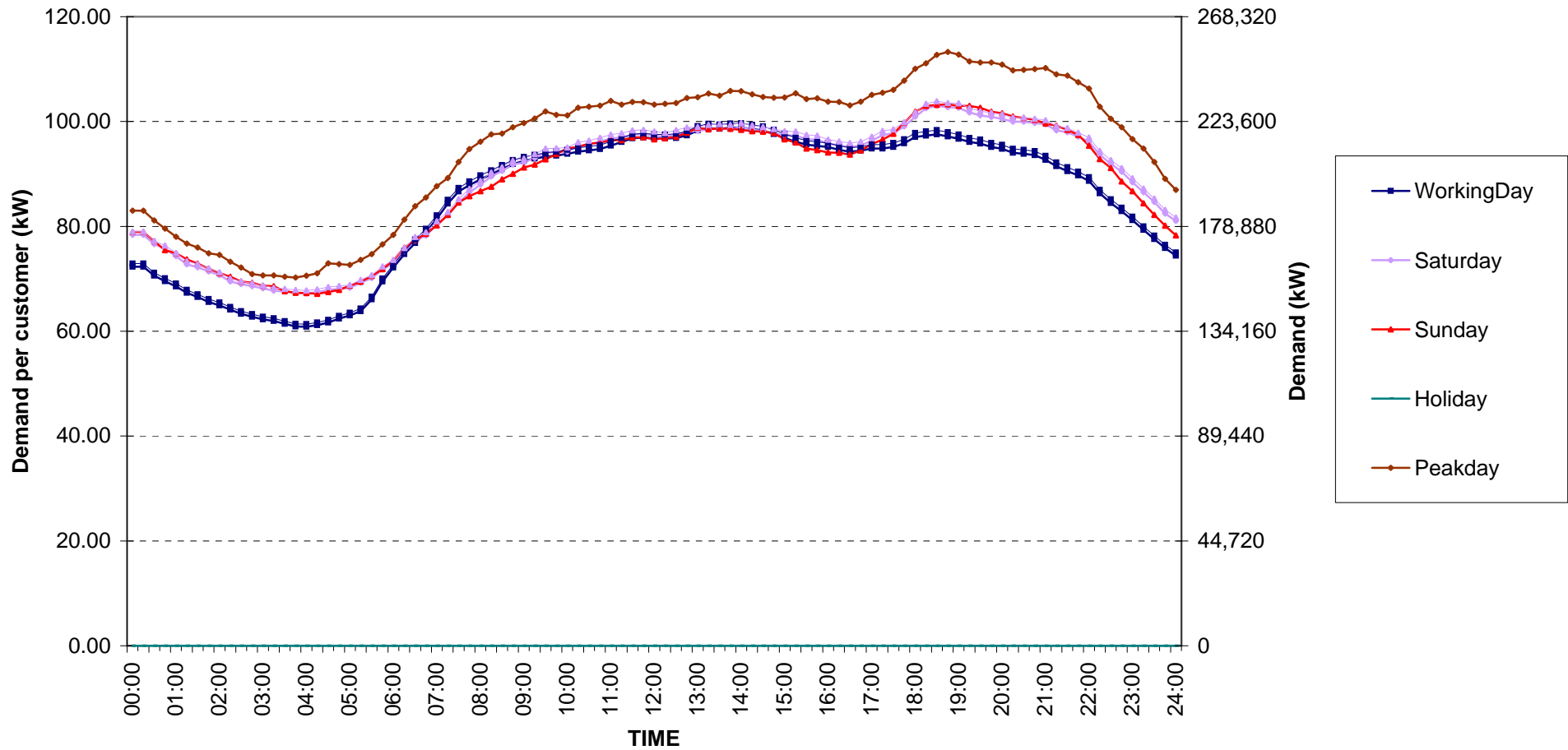
กราฟรูปที่ 6



Specific Business Load Profile

Date: 1 Nov, 2007 to 30 Nov, 2007

Number of sample customers = 76



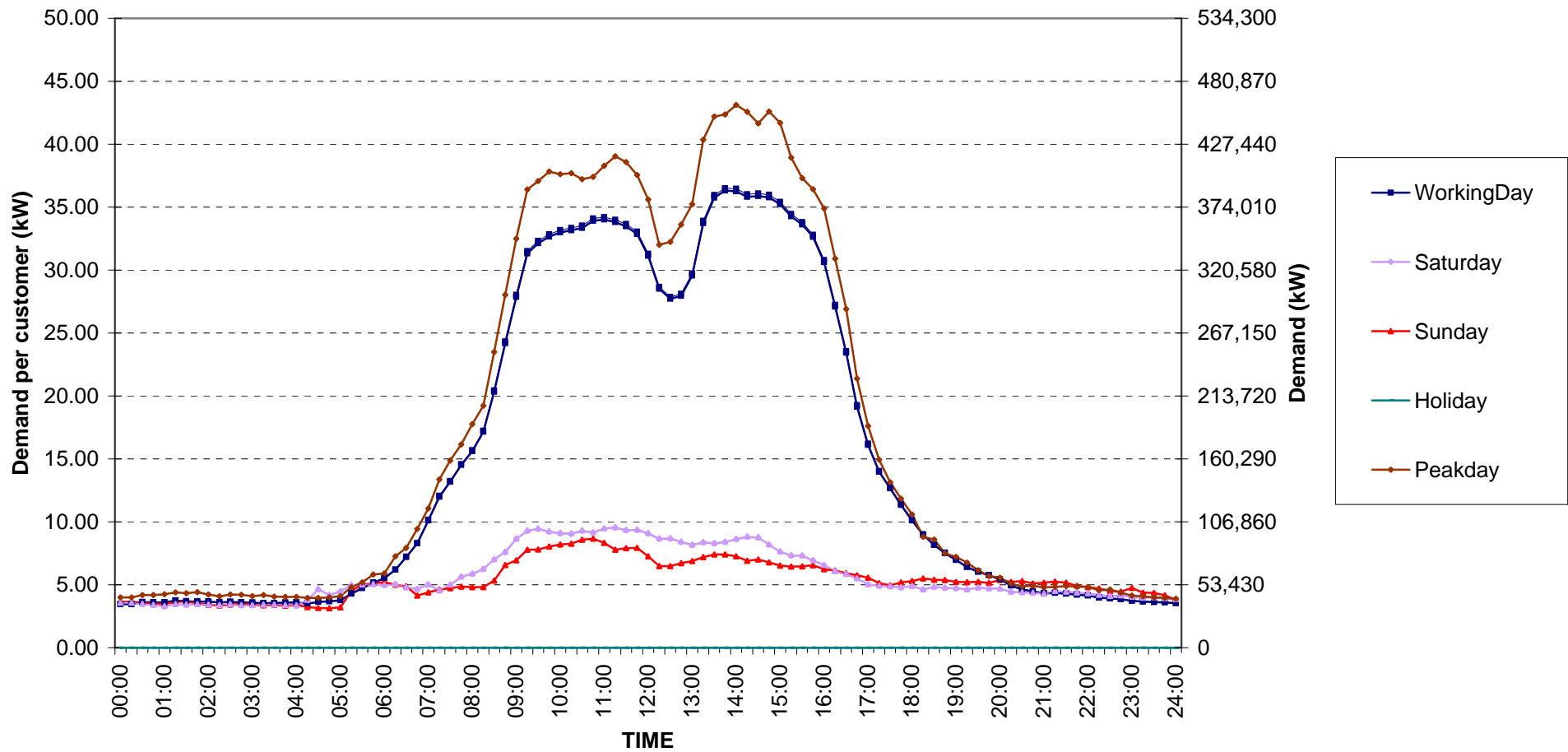
กราฟรูปที่ 7



Government institutions and non-profit organizations Load Profile

Date: 1 Nov, 2007 to 30 Nov, 2007

Number of sample customers = 68



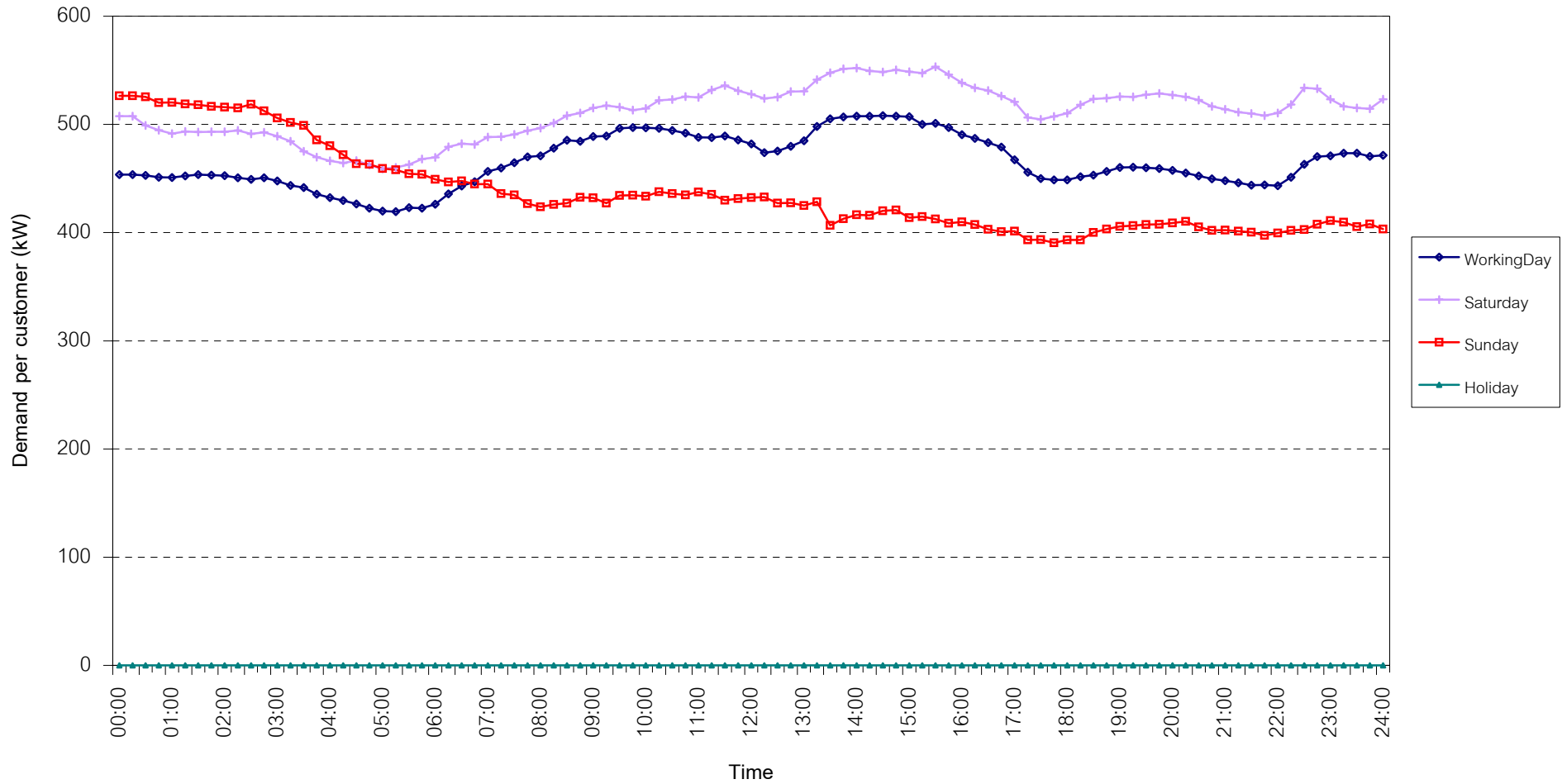
กราฟรูปที่ 8



## TSIC 31 (Food Processing) Load Profile

Date: 1 Nov, 2007 to 30 Nov, 2007

Number of sample customers = 30



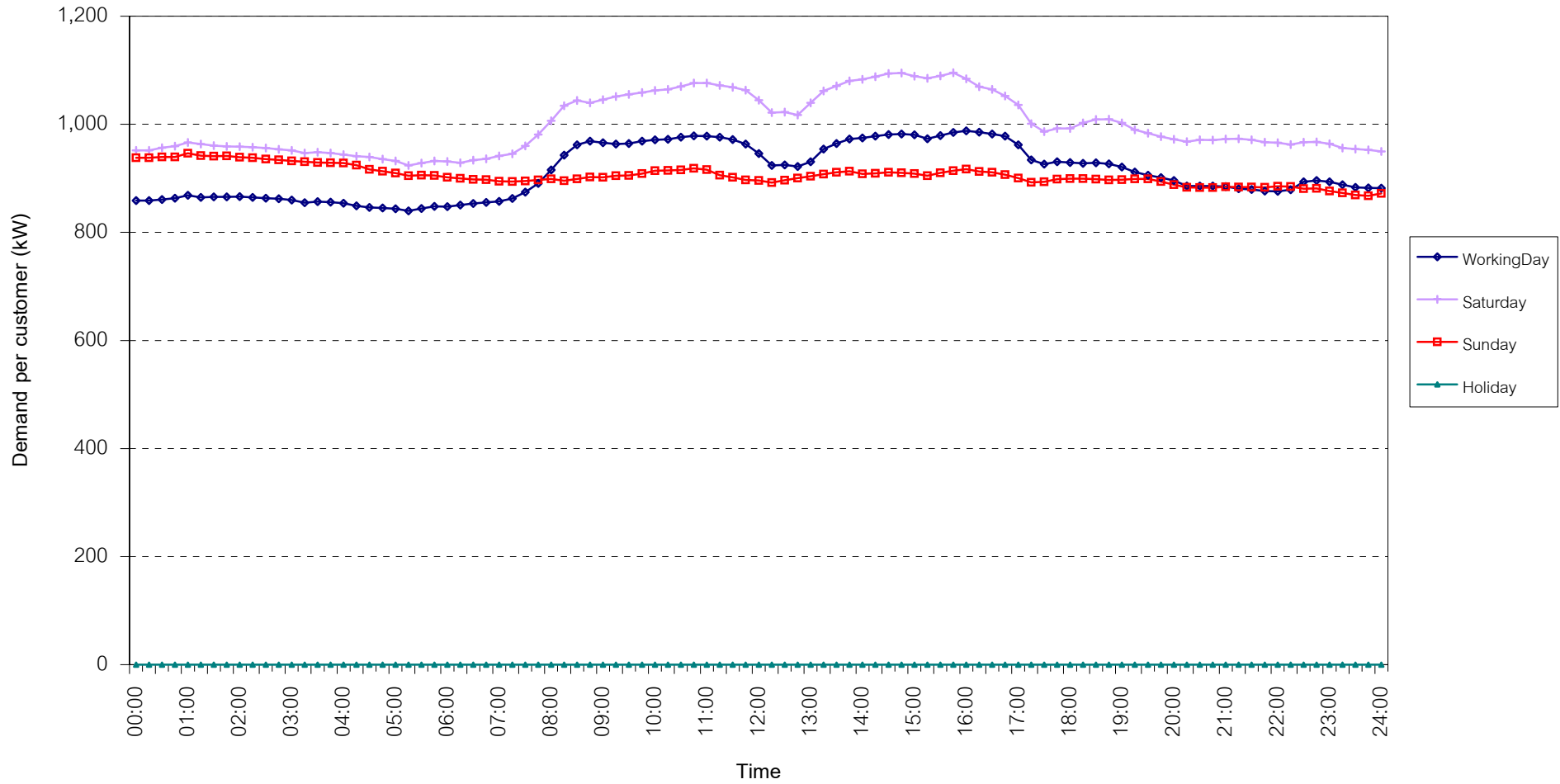
กราฟรูปที่ 9



## TSIC 32 (Textiles) Load Profile

Date: 1 Nov, 2007 to 30 Nov, 2007

Number of sample customers = 63



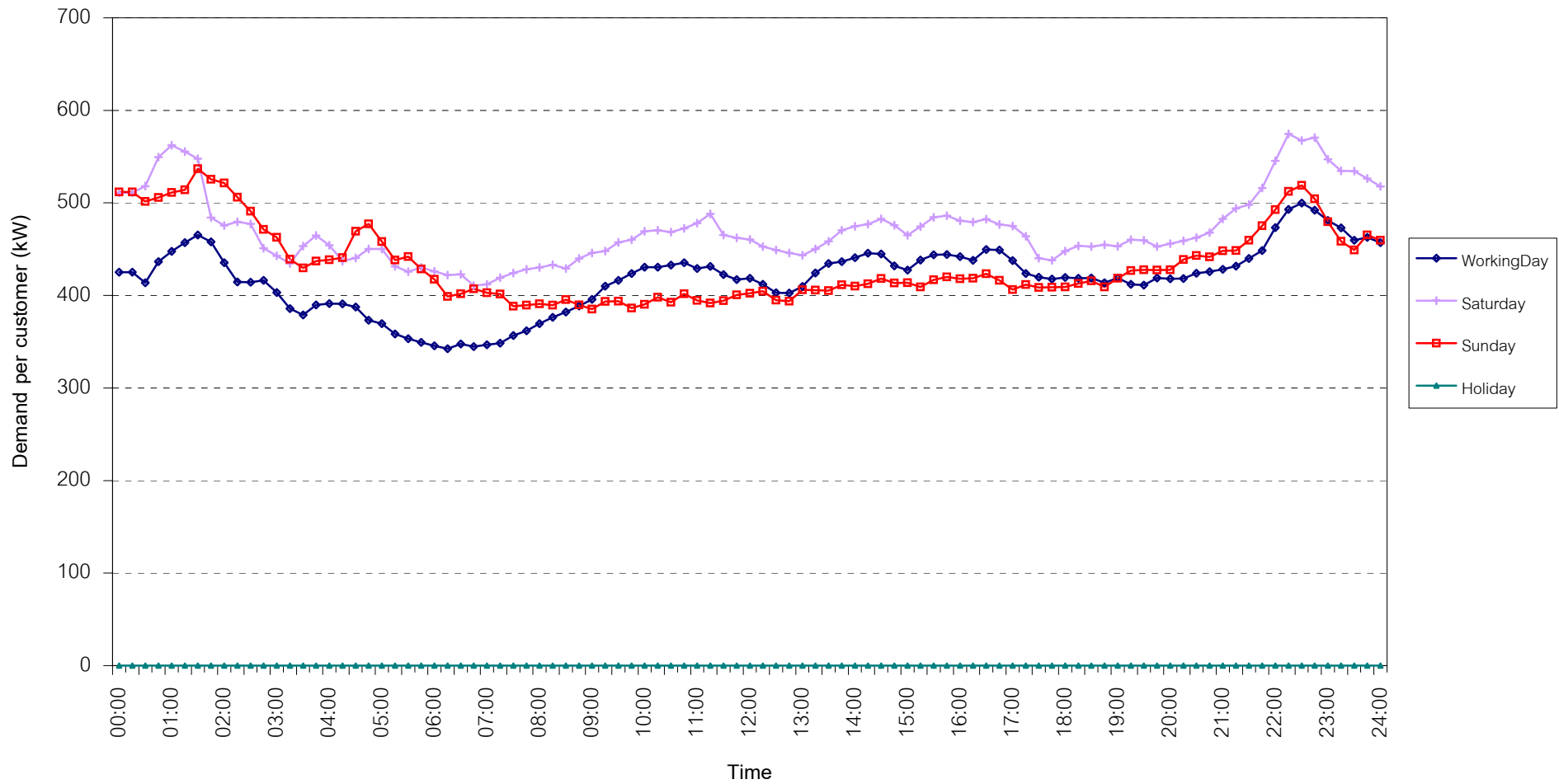
กราฟรูปที่ 10



## TSIC 34 (Paper & Printing) Load Profile

Date: 1 Nov, 2007 to 30 Nov, 2007

Number of sample customers = 10



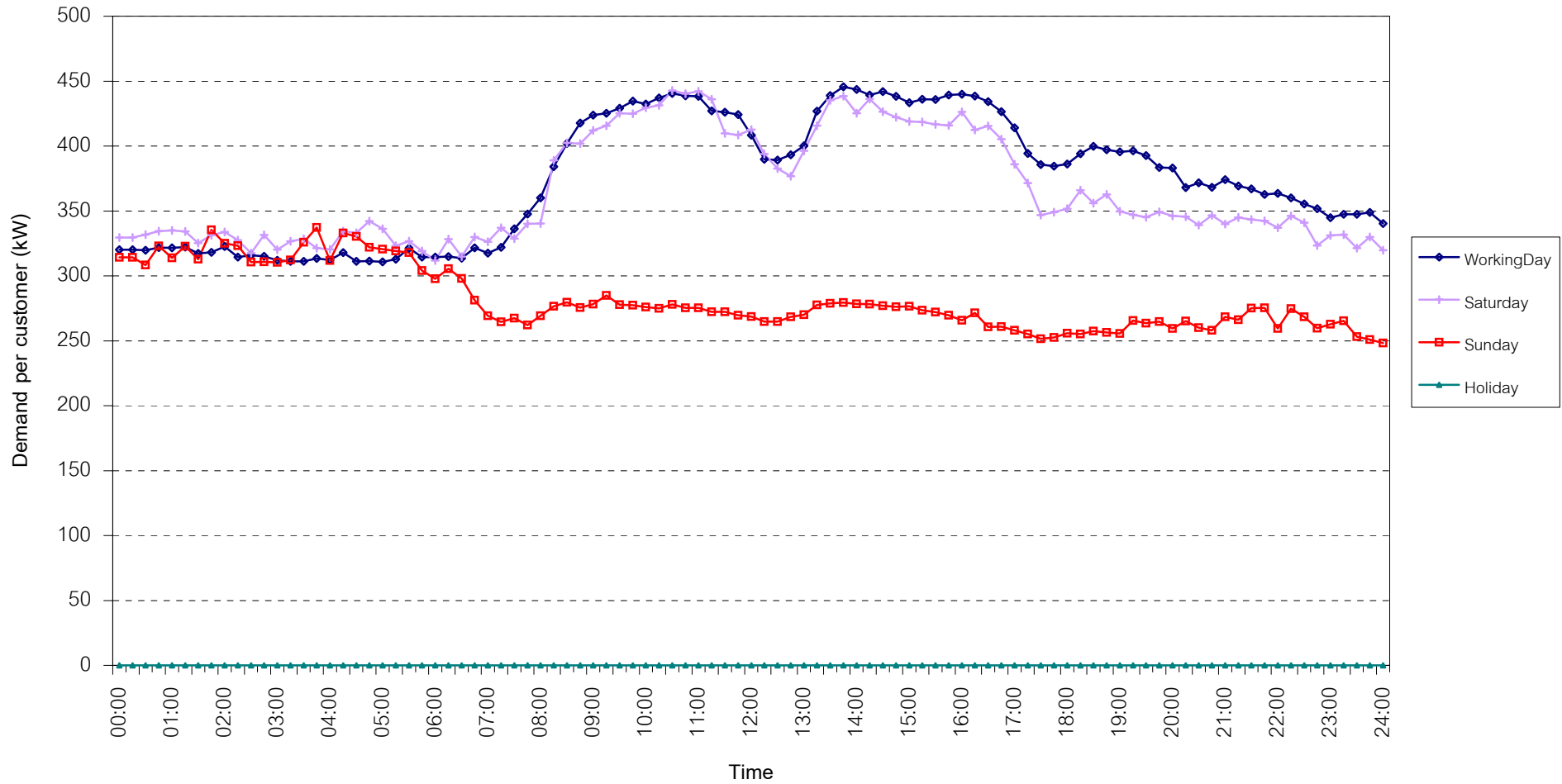
กราฟรูปที่ 11



## TSIC 35 (Chemical & Petroleum) Load Profile

Date: 1 Nov, 2007 to 30 Nov, 2007

Number of sample customers = 62



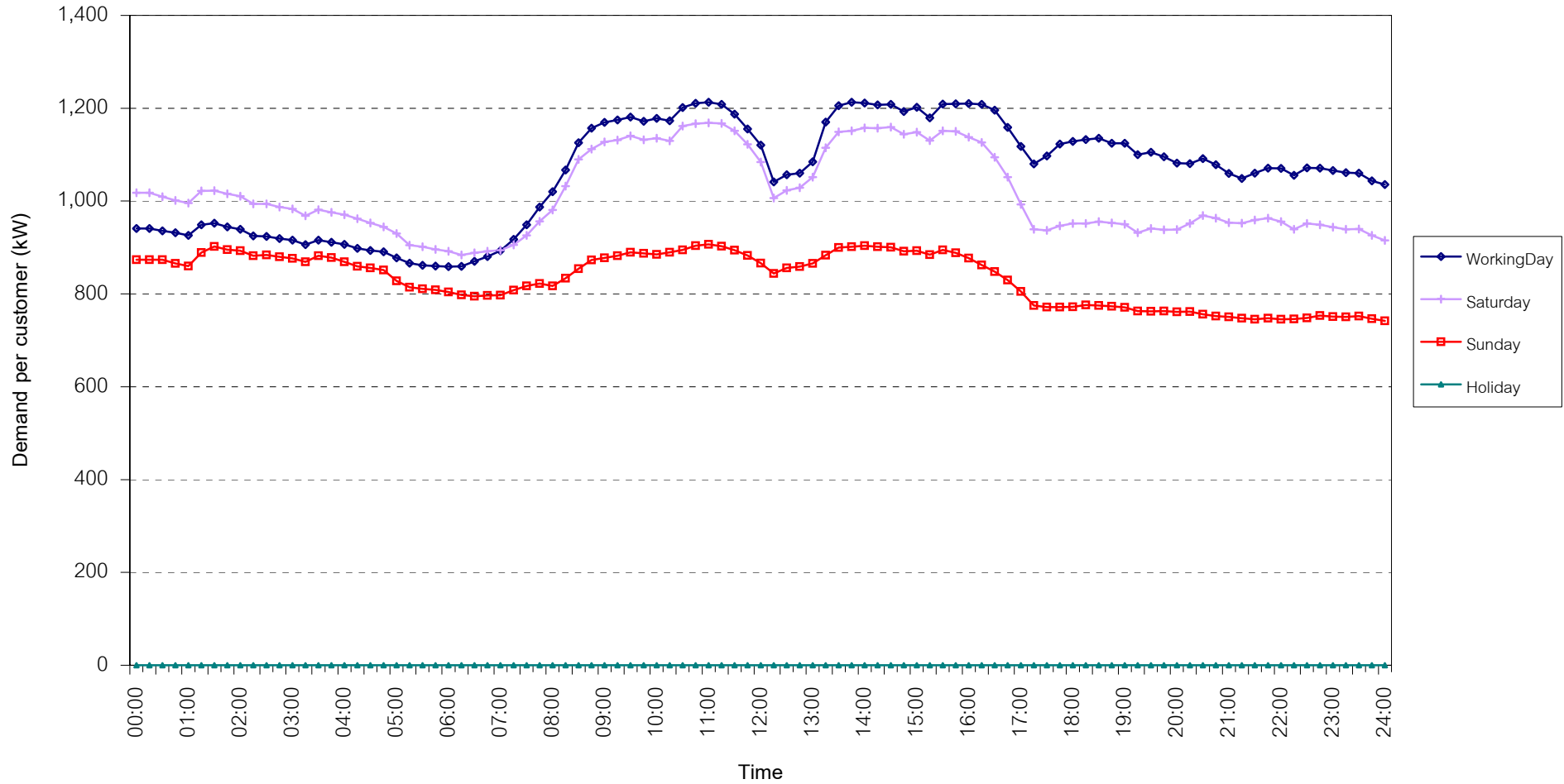
กราฟรูปที่ 12



## TSIC 38 (Fabricated Metal Products) Load Profile

Date: 1 Nov, 2007 to 30 Nov, 2007

Number of sample customers = 61



กราฟรูปที่ 13

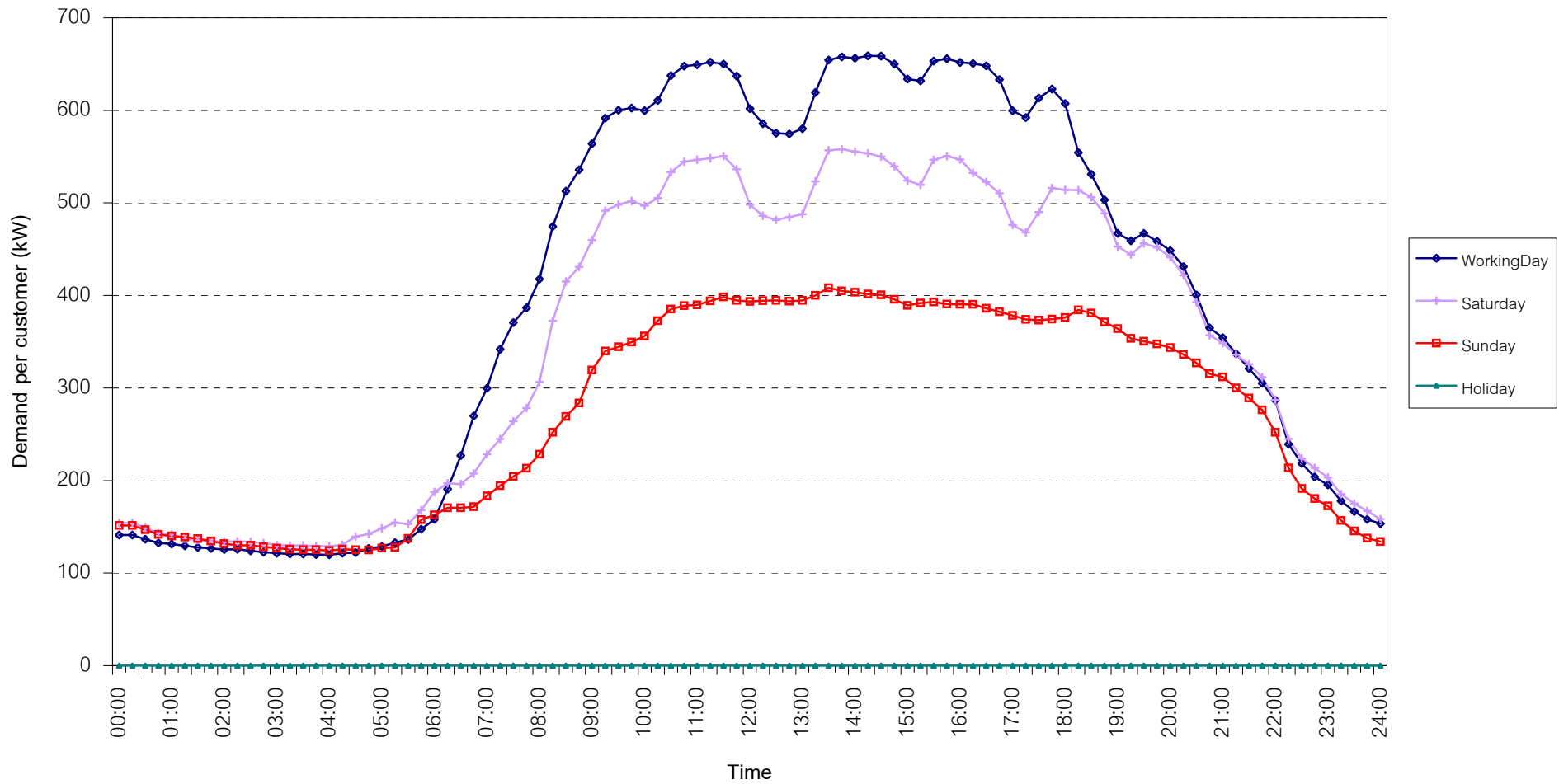




## TSIC 61 (Wholesale Trade) Load Profile

Date: 1 Nov, 2007 to 30 Nov, 2007

Number of sample customers = 8



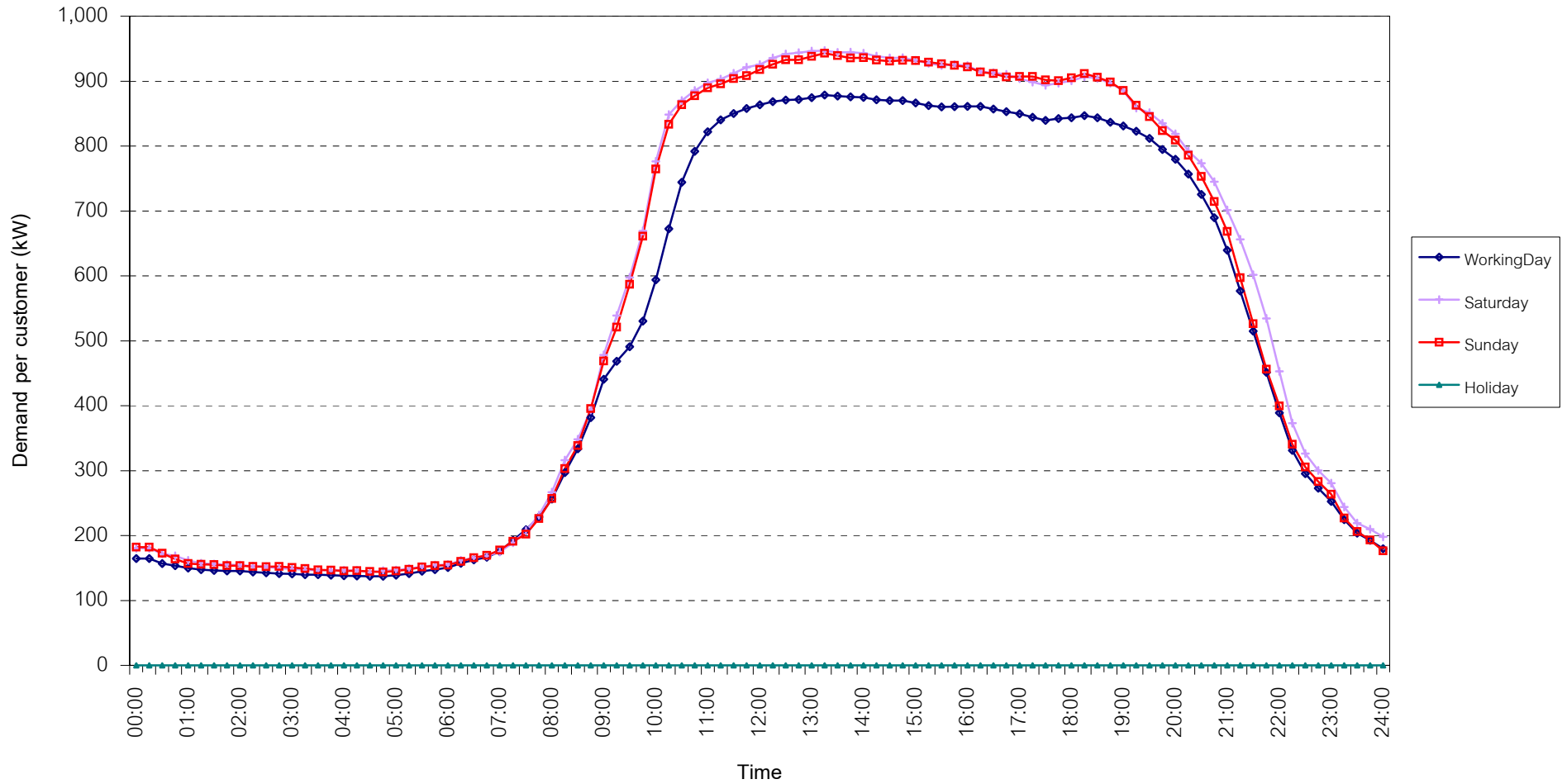
กราฟรูปที่ 14



## TSIC 62 (Retail Trade) Load Profile

Date: 1 Nov, 2007 to 30 Nov, 2007

Number of sample customers = 73



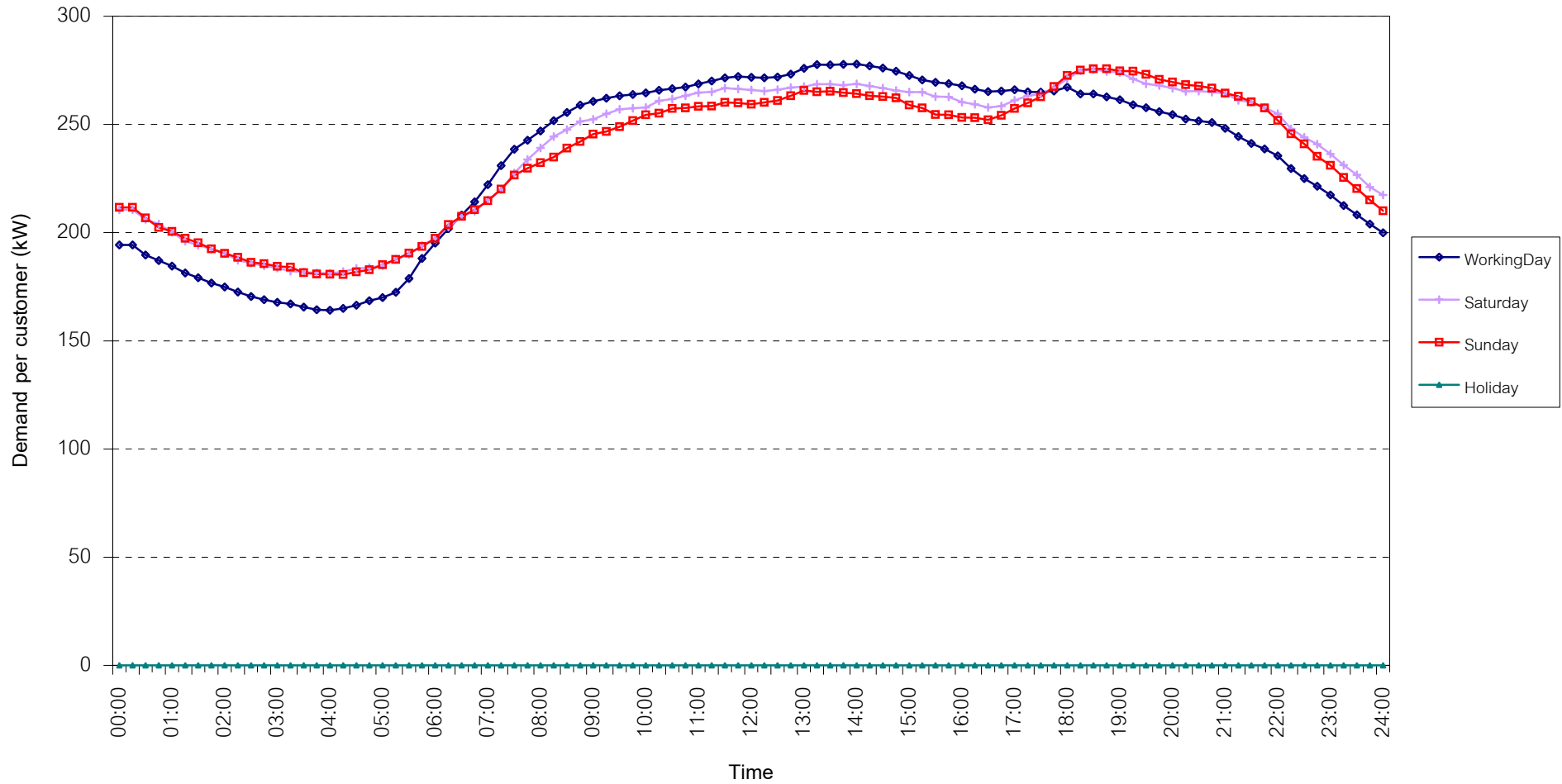
กราฟรูปที่ 15



## TSIC 63 (Hotels and restaurants) Load Profile

Date: 1 Nov, 2007 to 30 Nov, 2007

Number of sample customers = 82



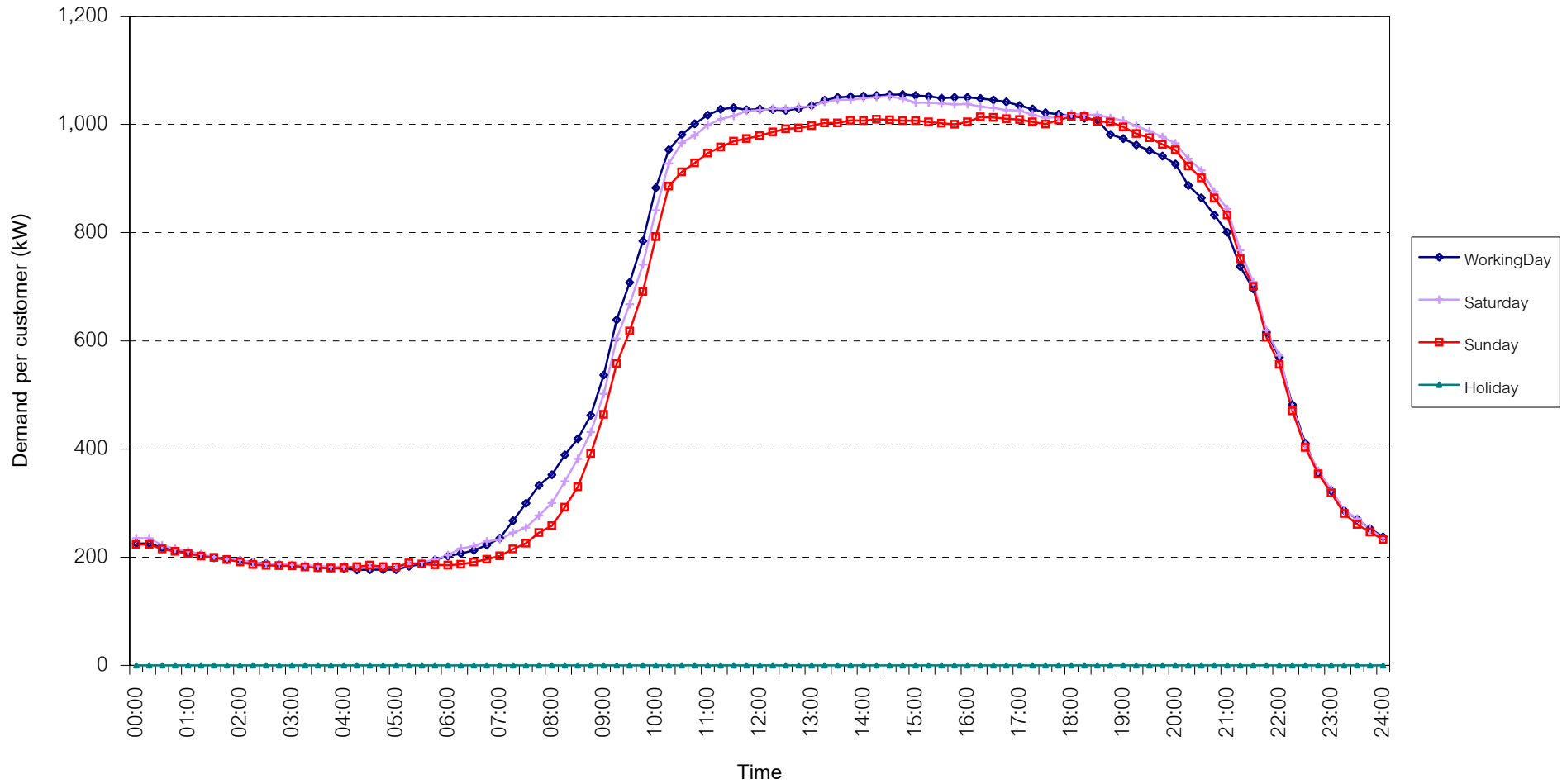
กราฟรูปที่ 16



TSIC 83 (Real Estate) Load Profile

Date: 1 Nov, 2007 to 30 Nov, 2007

Number of sample customers = 33



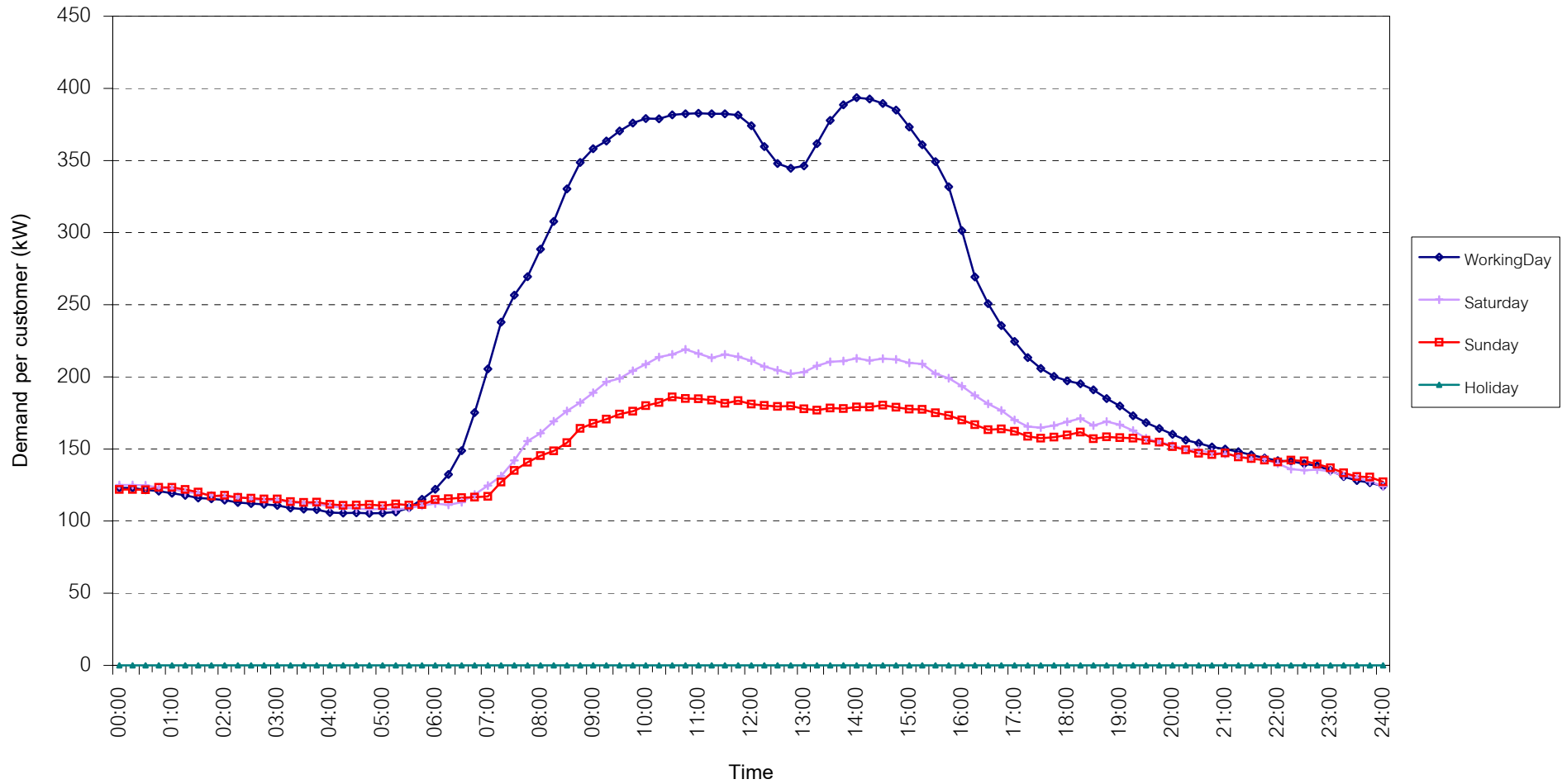
กราฟรูปที่ 17



## TSIC 93 (Social Services) Load Profile

Date: 1 Nov, 2007 to 30 Nov, 2007

Number of sample customers = 21

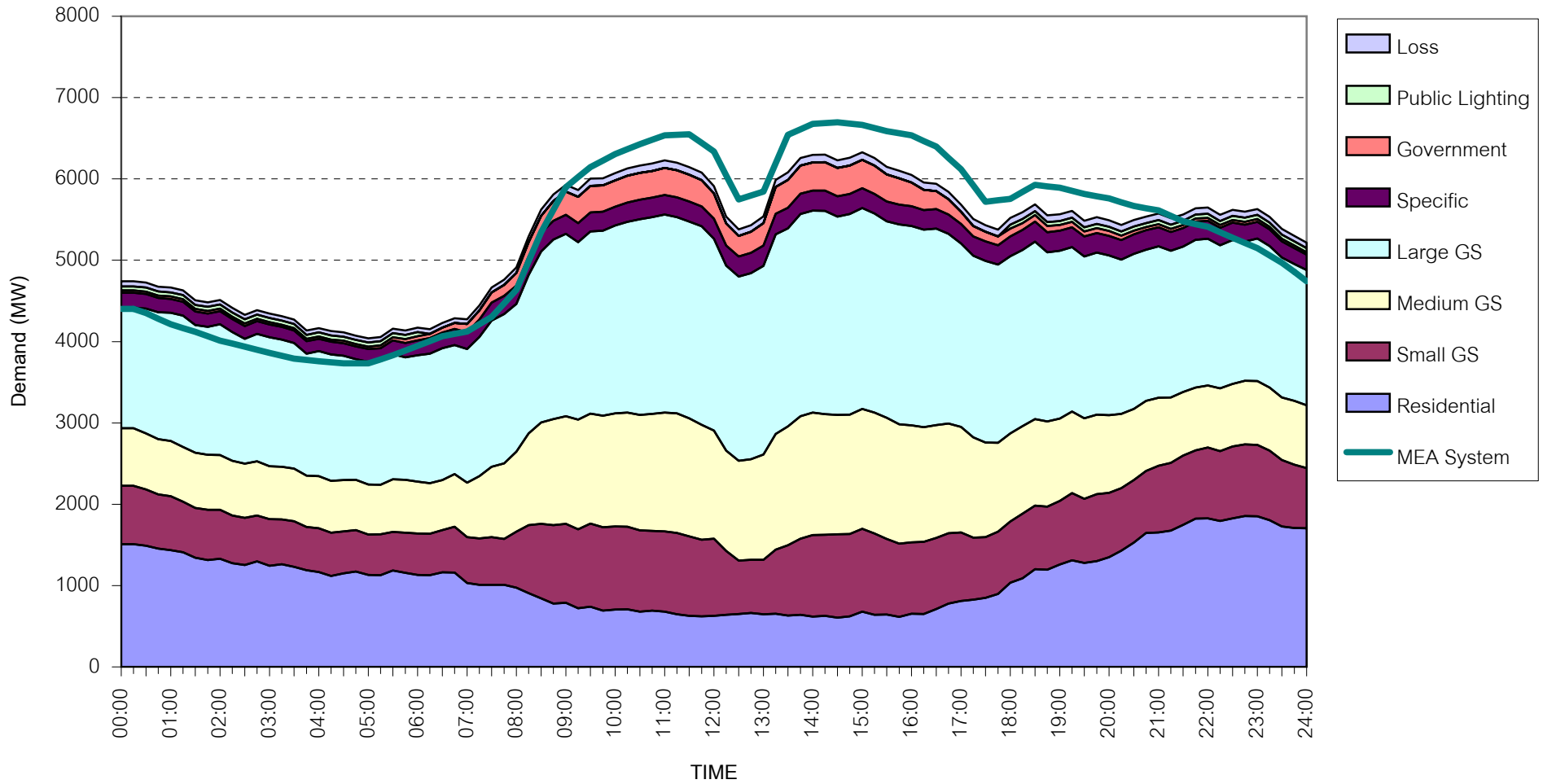


กราฟรูปที่ 18



### MEA's System Load Profile

Peak Day 14 November, 2007 at 14:30



กราฟรูปที่ 19