

ข้อมูลการศึกษาลักษณะการใช้ไฟฟ้า

เดือน กรกฎาคม 2562

Table 1-1

COINCIDENT WITH LOAD RESEARCH SYSTEM'S PEAK ON July 23,2019 time 13:15 8,239.71 MW
 (MEA SYSTEM'S PEAK ON July 23,2019 time 14:00 8,627.92 MW)

CLASS	Number of Customers	Kilowatt hours	Coincident Peak (MEA System Peak at time 14:00)		Coincident Peak (Load Research System Peak at time 13:15)		Sector Diversified Demand		
			MW	Contribution (%)	MW	Contribution (%)	Max MW.	Date	Time
Residential	3,297,701	1,207,611,660	1,446.51	18.14	1,786.29	21.68	2,904.45	18 Jul 19	21:00
Small General Service	512,950	696,407,950	1,230.08	15.43	1,219.62	14.80	1,380.14	17 Jul 19	08:30
Medium General Service	23,703	759,153,899	1,522.96	19.10	1,486.91	18.05	1,571.51	31 Jul 19	11:15
Large General Service	2,453	1,579,136,725	3,137.40	39.35	3,119.75	37.86	3,279.43	22 Jul 19	13:45
Specific Business	3,333	190,302,064	231.40	2.90	242.91	2.95	342.38	11 Jul 19	01:00
Non Profit Organization	321	11,389,367	38.74	0.49	36.33	0.44	48.72	23 Jul 19	14:00
Public Lighting	-	42,407,680	0.00	0.00	0.00	0.00	111.91	-	-
Loss	-	204,471,708	365.98	4.59	347.90	4.22	365.98	23 Jul 19	14:00
TOTAL	3,840,461	4,690,881,053	7,973.07	100.00	8,239.71	100.00	8,239.71	23 Jul 19	13:15

Table 1-2

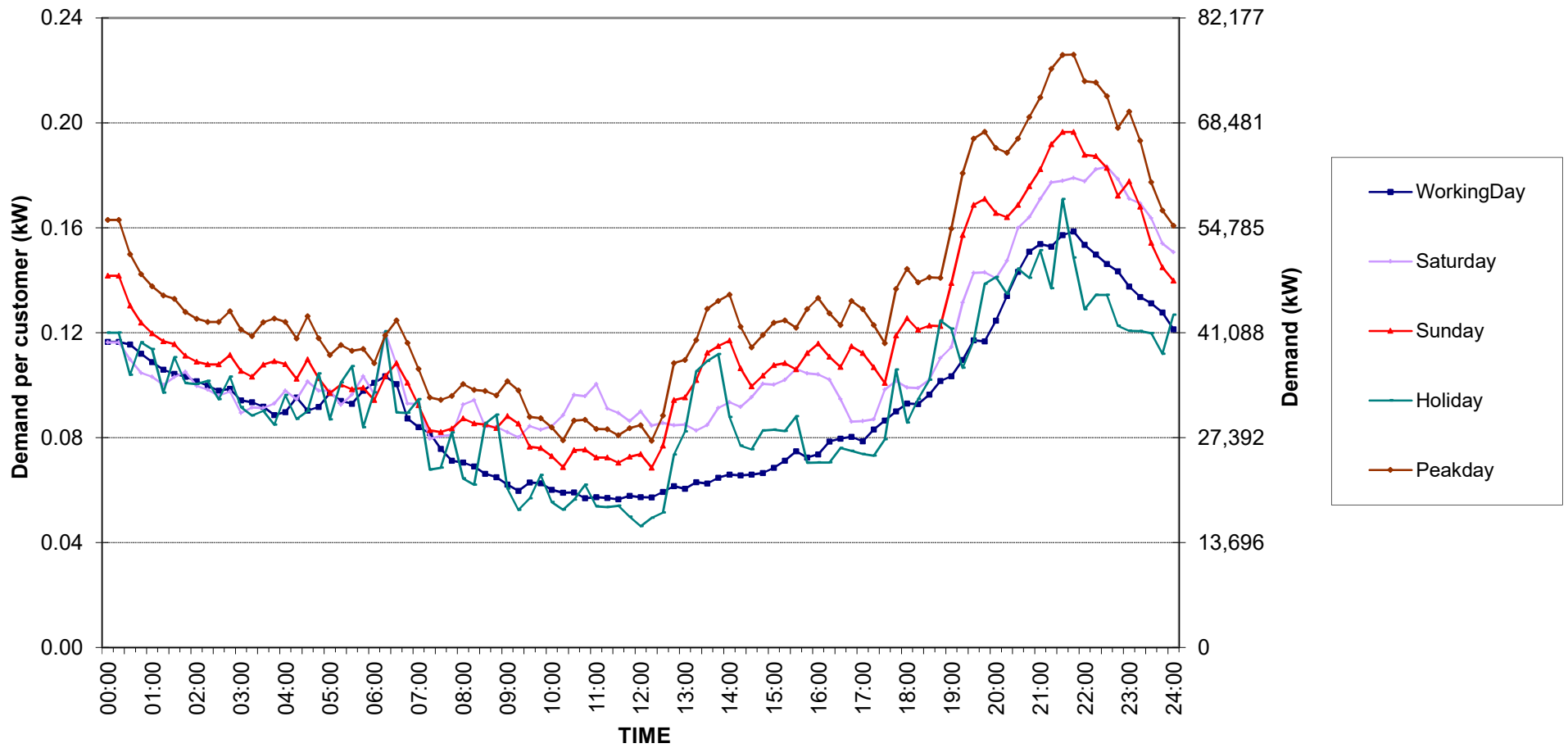
Number of sample customers on July, 2019

CLASS	Number of sample customers (Target)	Number of sample customers (Collected)
Residential	171	171
Small General Service	258	258
Medium General Service	165	165
Large General Service	284	284
Specific Business	74	74
Non-profit Organization	50	50
TOTAL	1,002	1,002

Residential (Energy Consumption less than 150 kWh per month)

Date: 1 Jul, 2019 to 31 Jul, 2019

Number of sample customers = 52

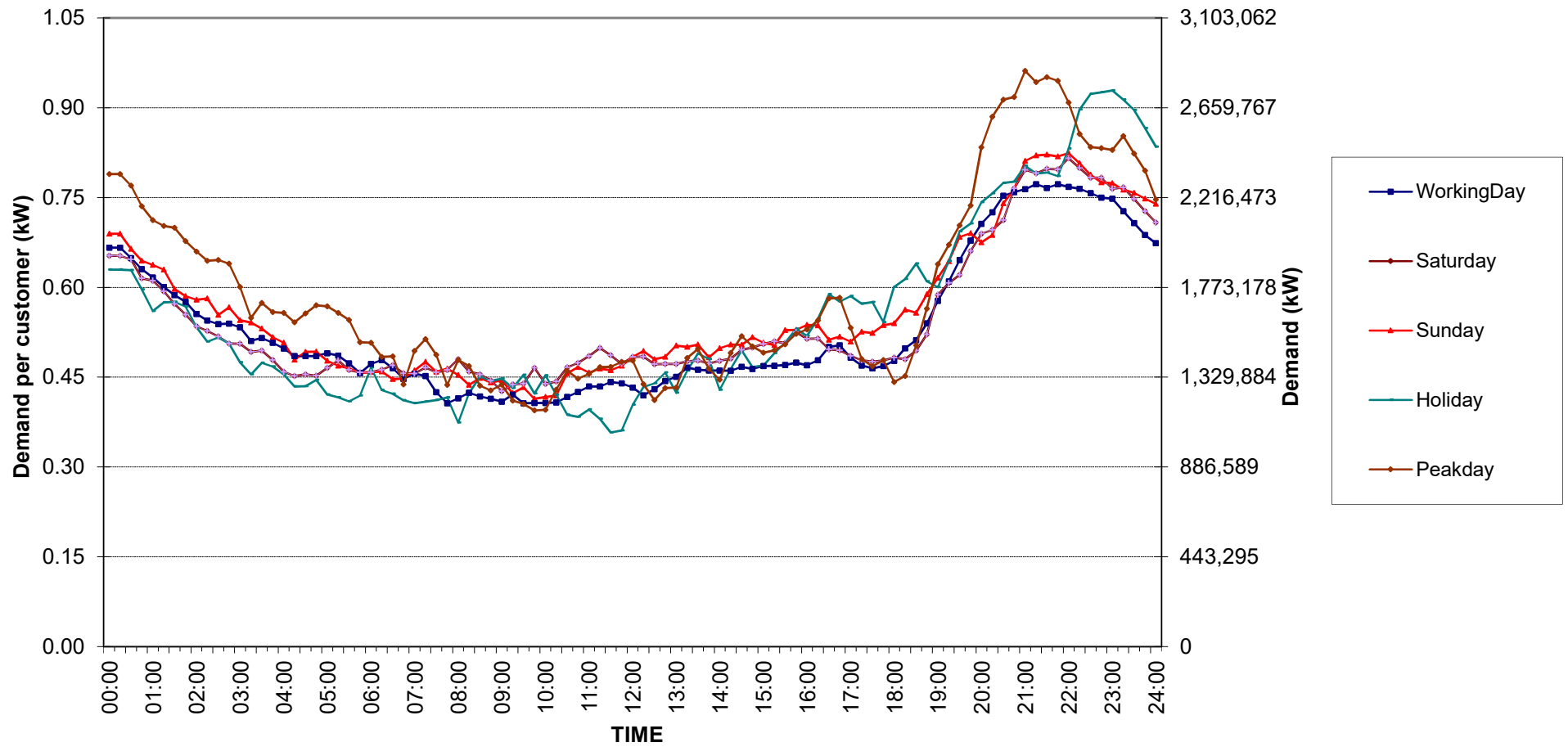


กราฟรูปที่ 1

Residential (Energy Consumption more than 150 kWh per month)

Date: 1 Jul, 2019 to 31 Jul, 2019

Number of sample customers = 119

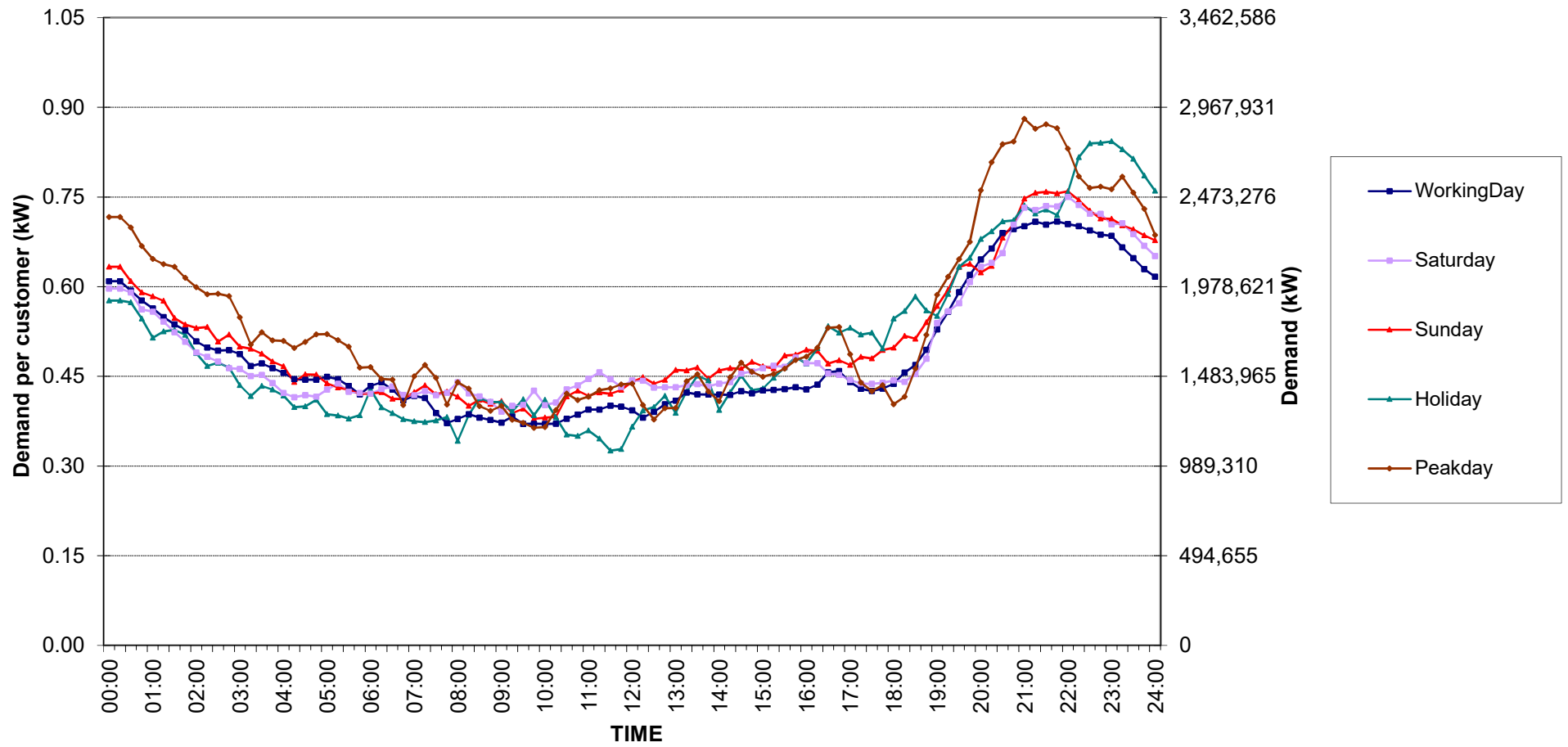


กราฟรูปที่ 2

Residential Load Profile

Date: 1 Jul, 2019 to 31 Jul, 2019

Number of sample customers = 171

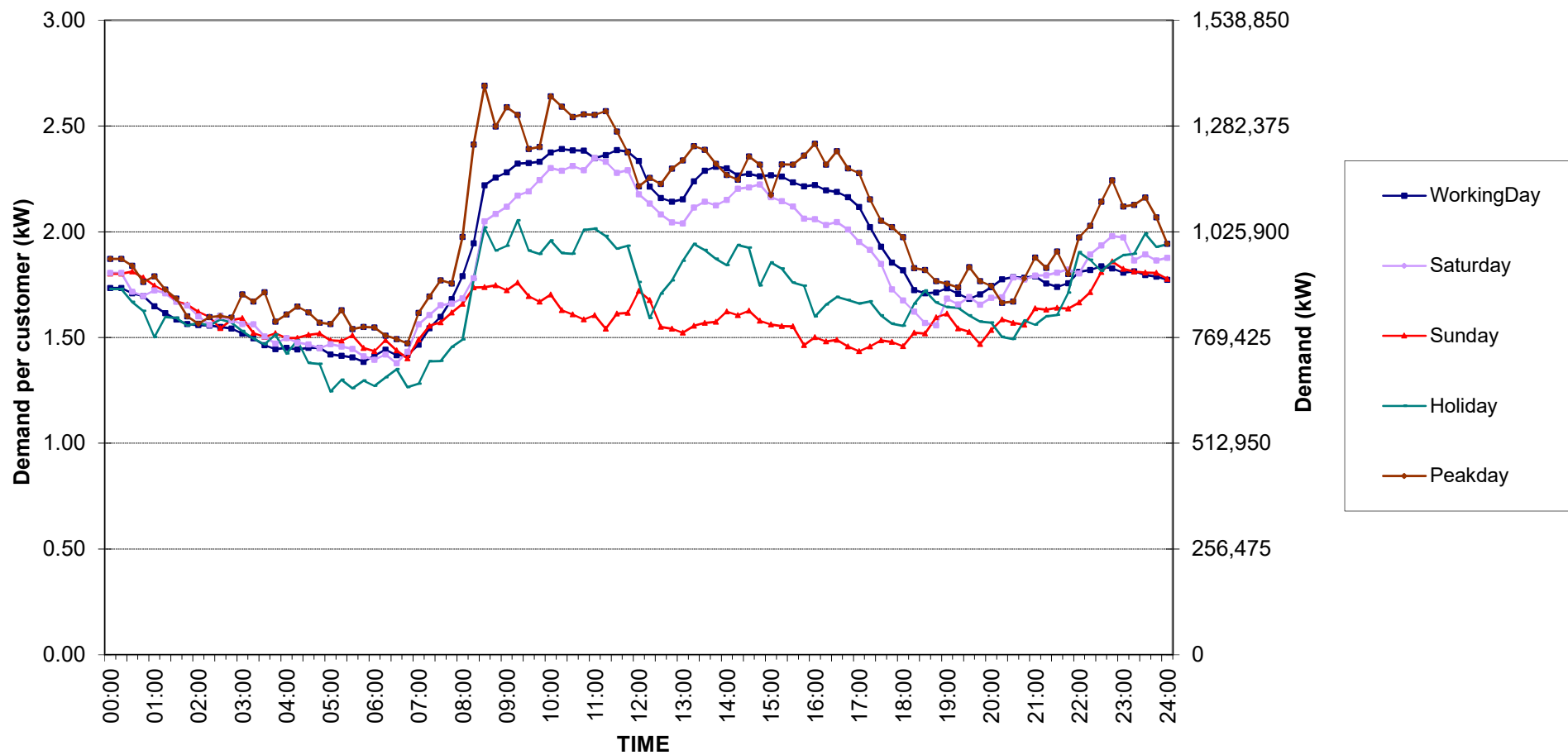


กราฟรูปที่ 3

Small General Services Load Profile

Date: 1 Jul, 2019 to 31 Jul, 2019

Number of sample customers = 258

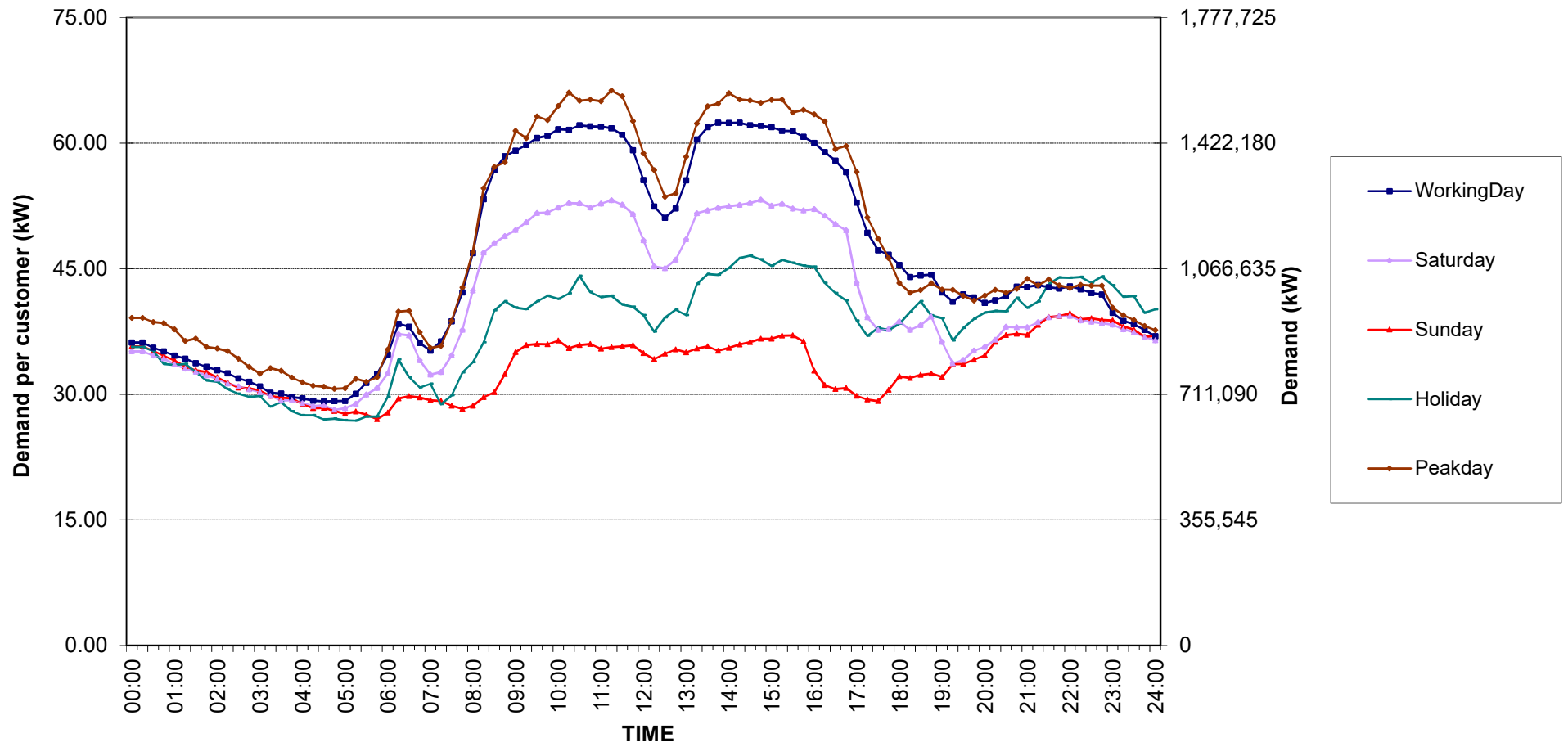


กราฟรูปที่ 4

Medium General Services Load Profile

Date: 1 Jul, 2019 to 31 Jul, 2019

Number of sample customers = 165

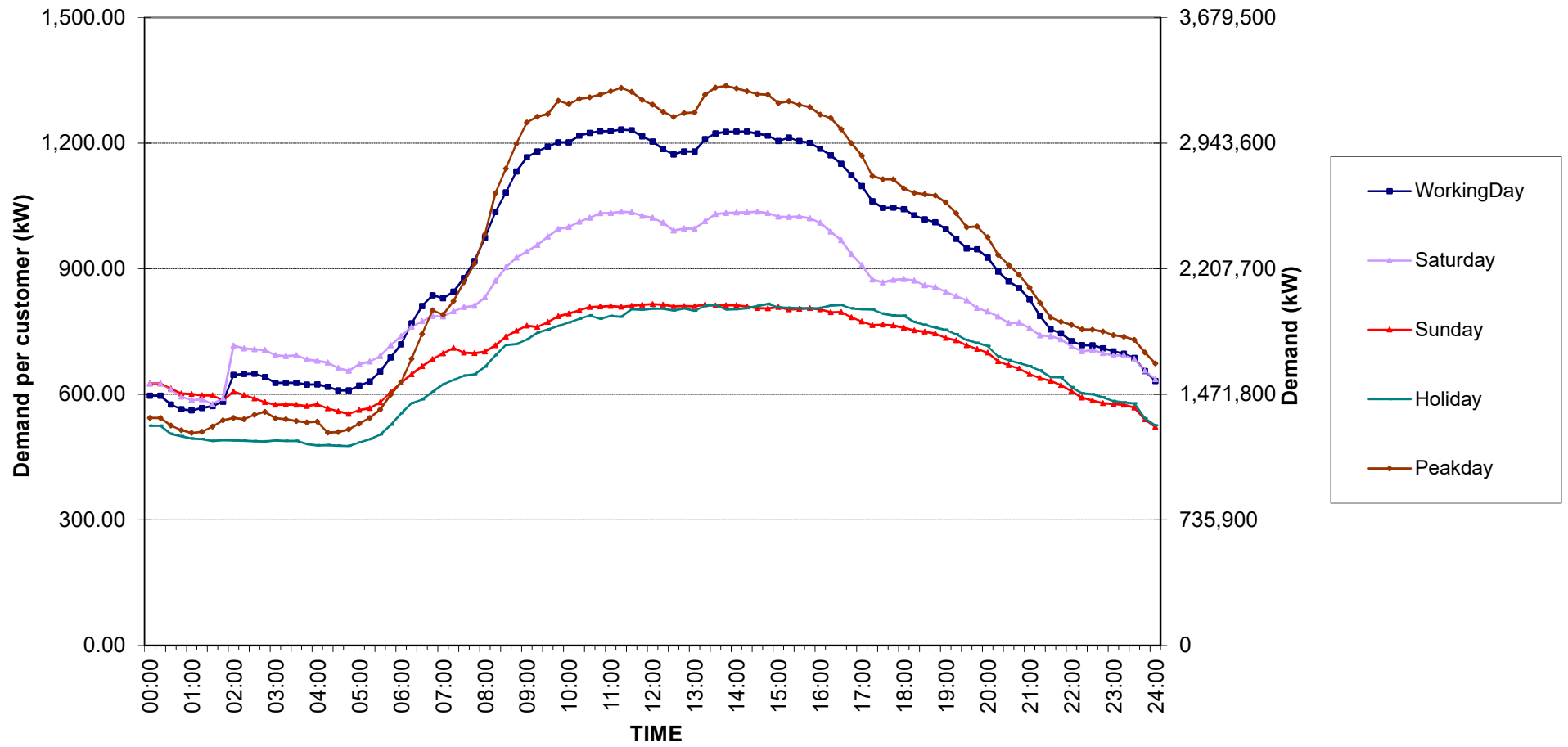


กราฟรูปที่ 5

Large General Services Load Profile

Date: 1 Jul, 2019 to 31 Jul, 2019

Number of sample customers = 284

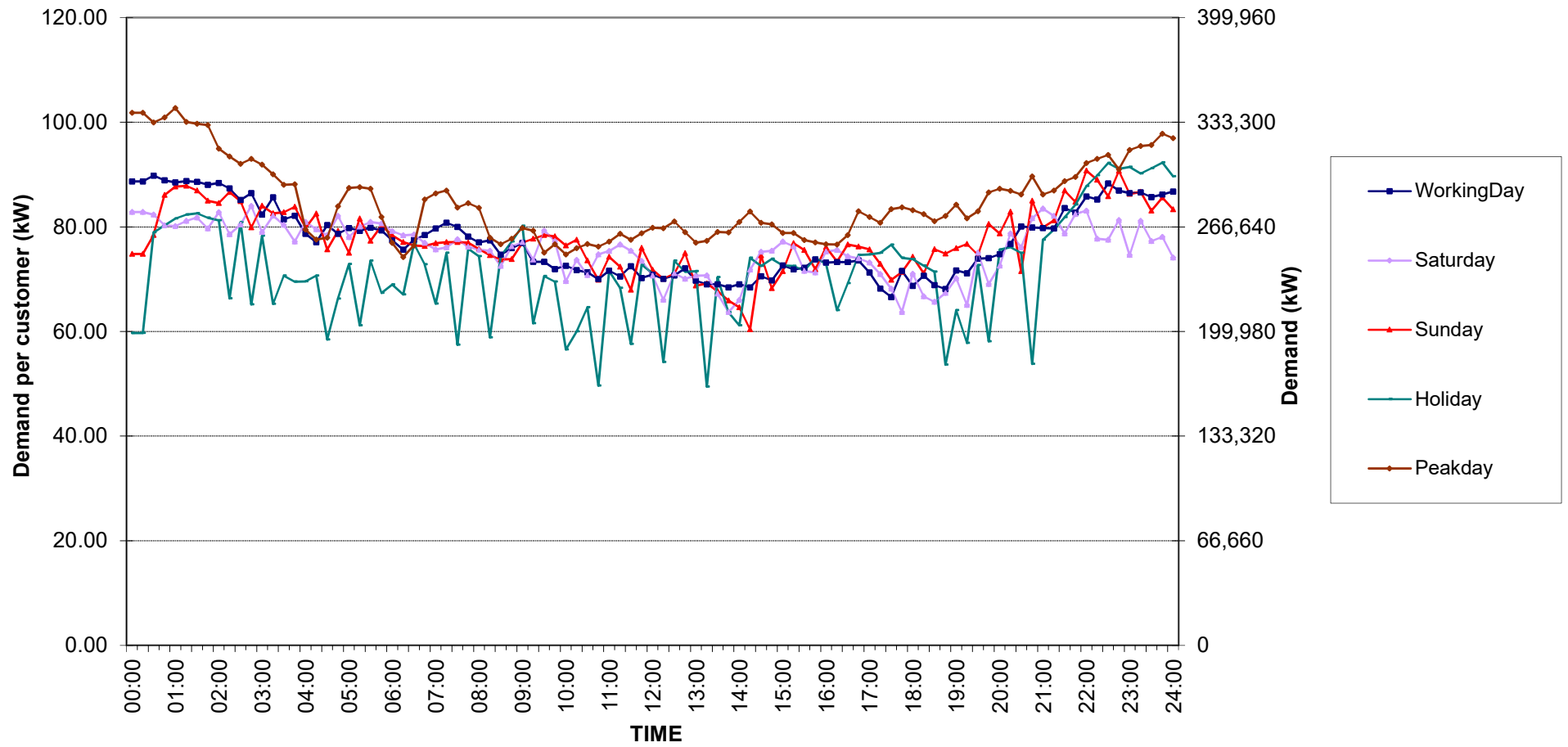


กราฟรูปที่ 6

Specific Business Load Profile

Date: 1 Jul, 2019 to 31 Jul, 2019

Number of sample customers = 74

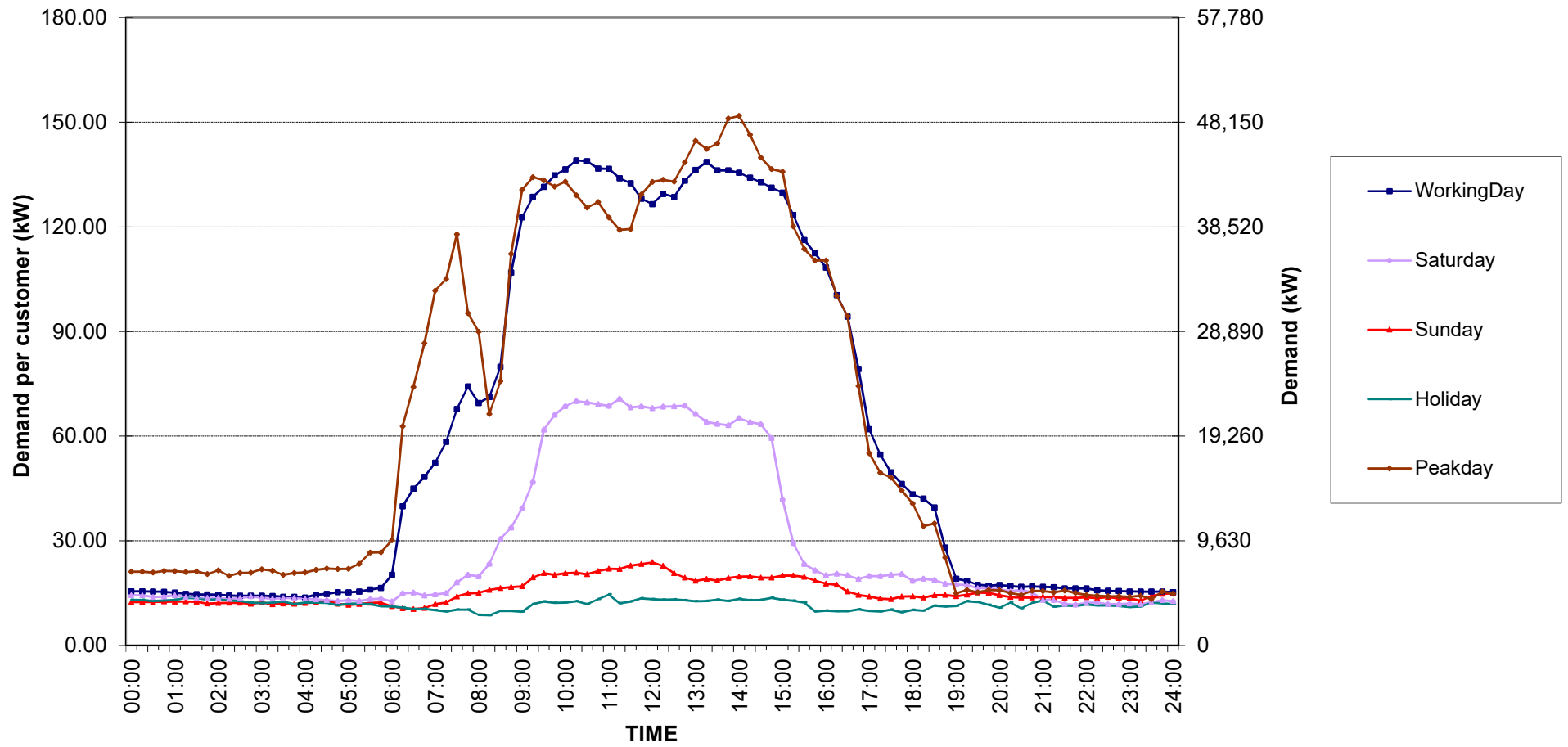


กราฟรูปที่ 7

Non-profit organizations Load Profile

Date: 1 Jul, 2019 to 31 Jul, 2019

Number of sample customers = 50

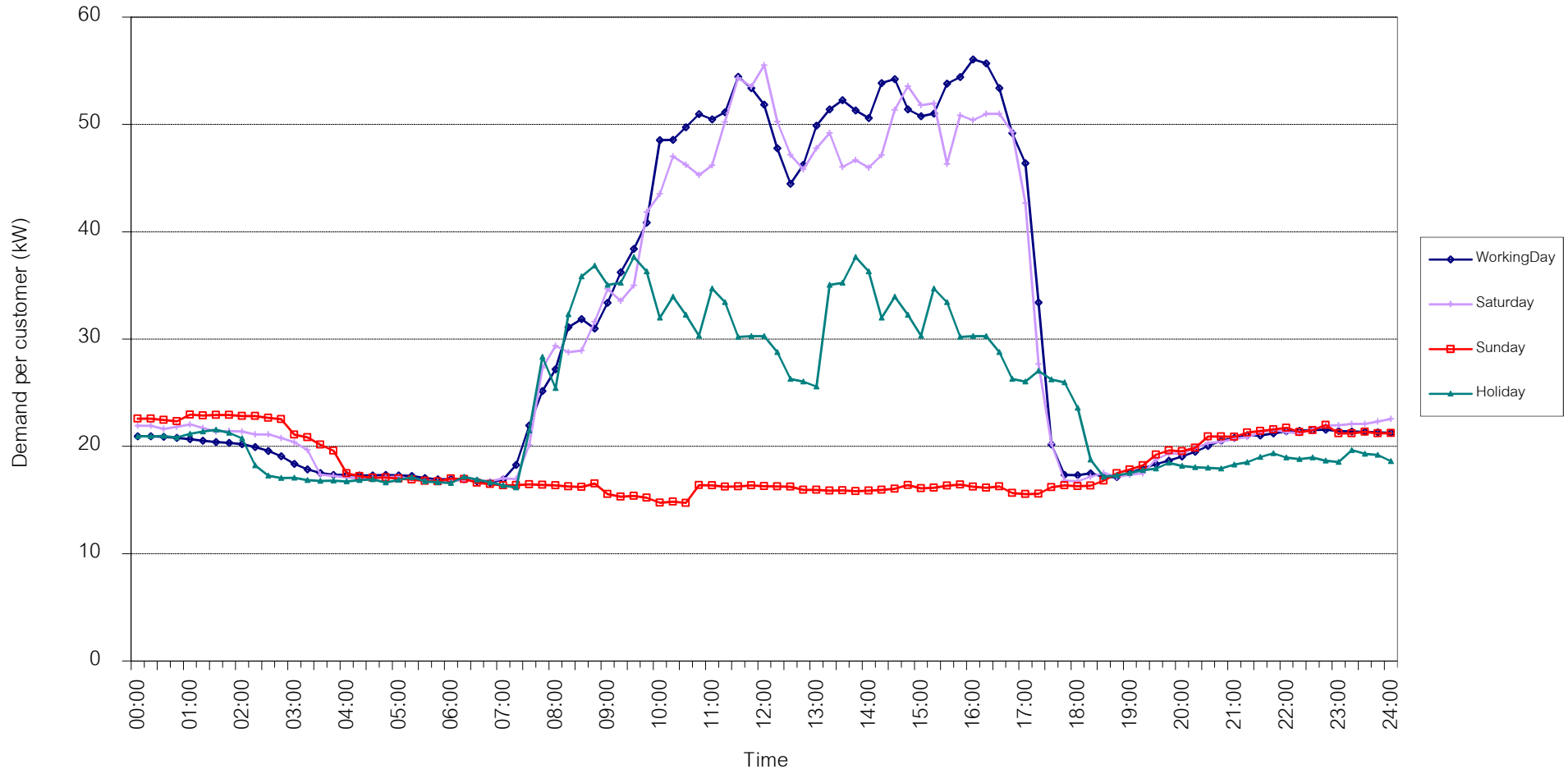


กราฟรูปที่ 8

TSIC 31 (Food Processing) Load Profile

Date: 1 Jul, 2019 to 31 Jul, 2019

Number of sample customers = 32

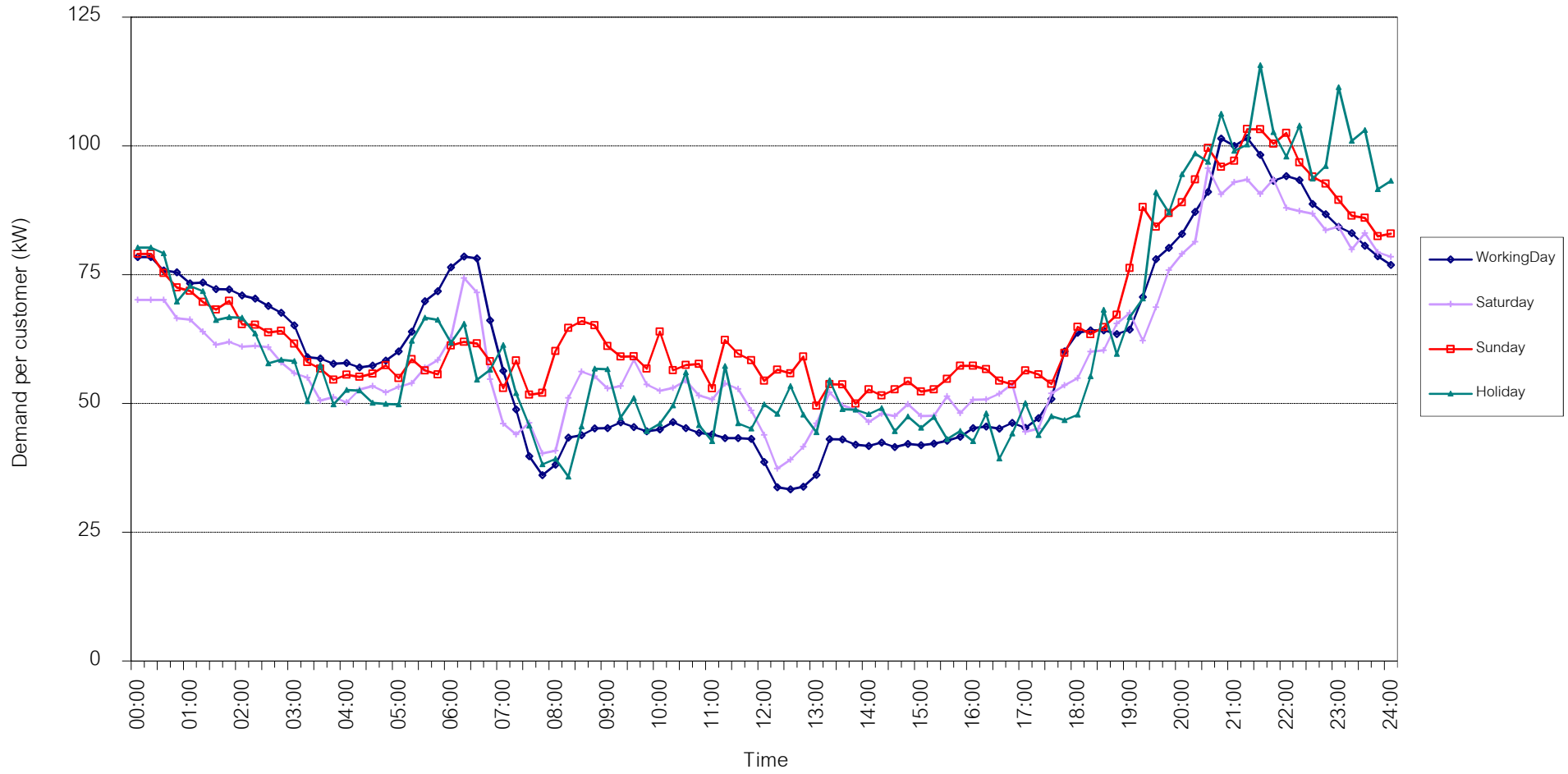


กราฟรูปที่ 9

TSIC 32 (Textiles) Load Profile

Date: 1 Jul, 2019 to 31 Jul, 2019

Number of sample customers = 67



กราฟรูปที่ 10

TSIC 34 (Paper & Printing) Load Profile

Date: 1 Jul, 2019 to 31 Jul, 2019

Number of sample customers = 12

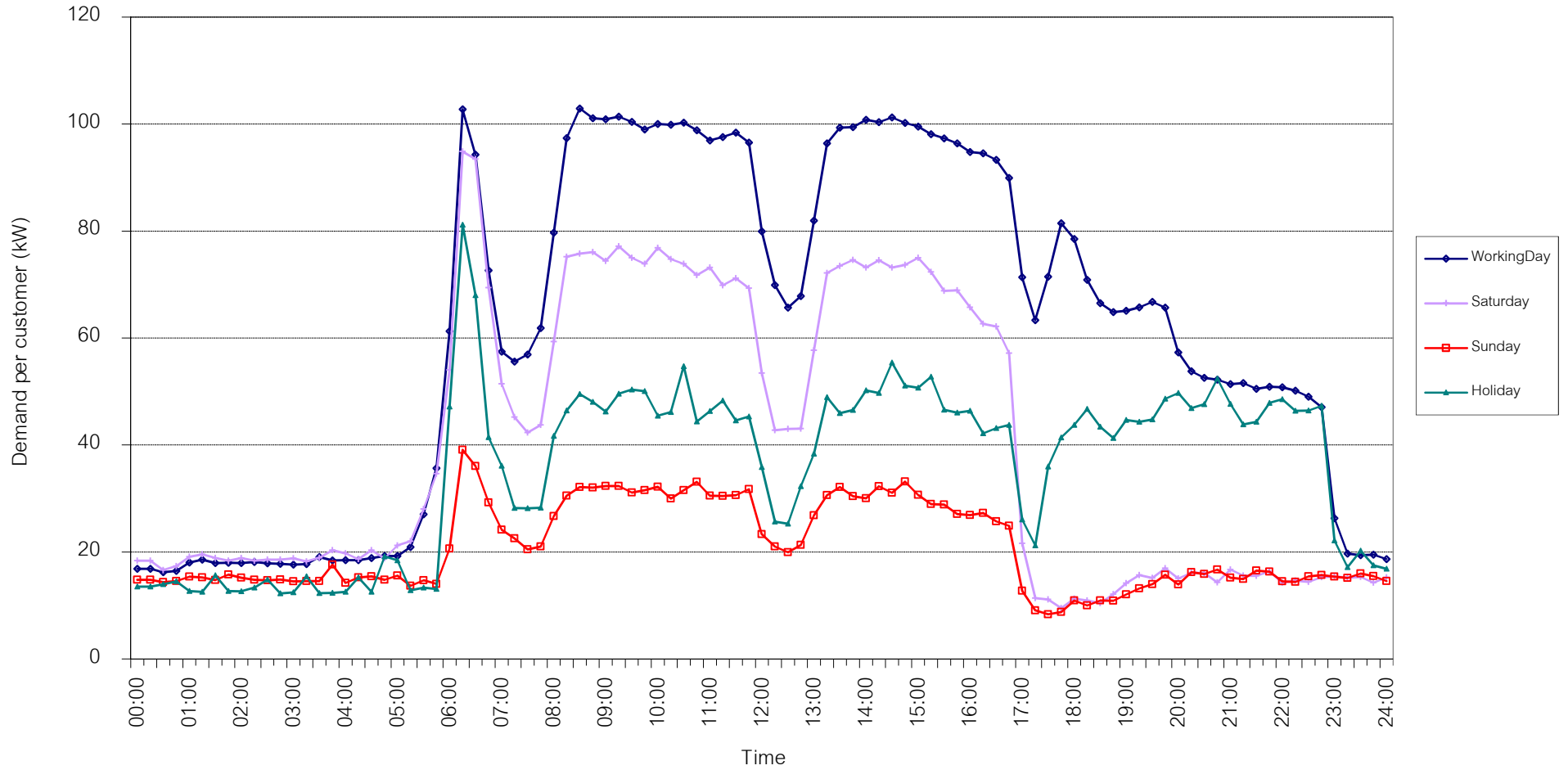


กราฟรูปที่ 11

TSIC 35 (Chemical & Petroleum) Load Profile

Date: 1 Jul, 2019 to 31 Jul, 2019

Number of sample customers = 75

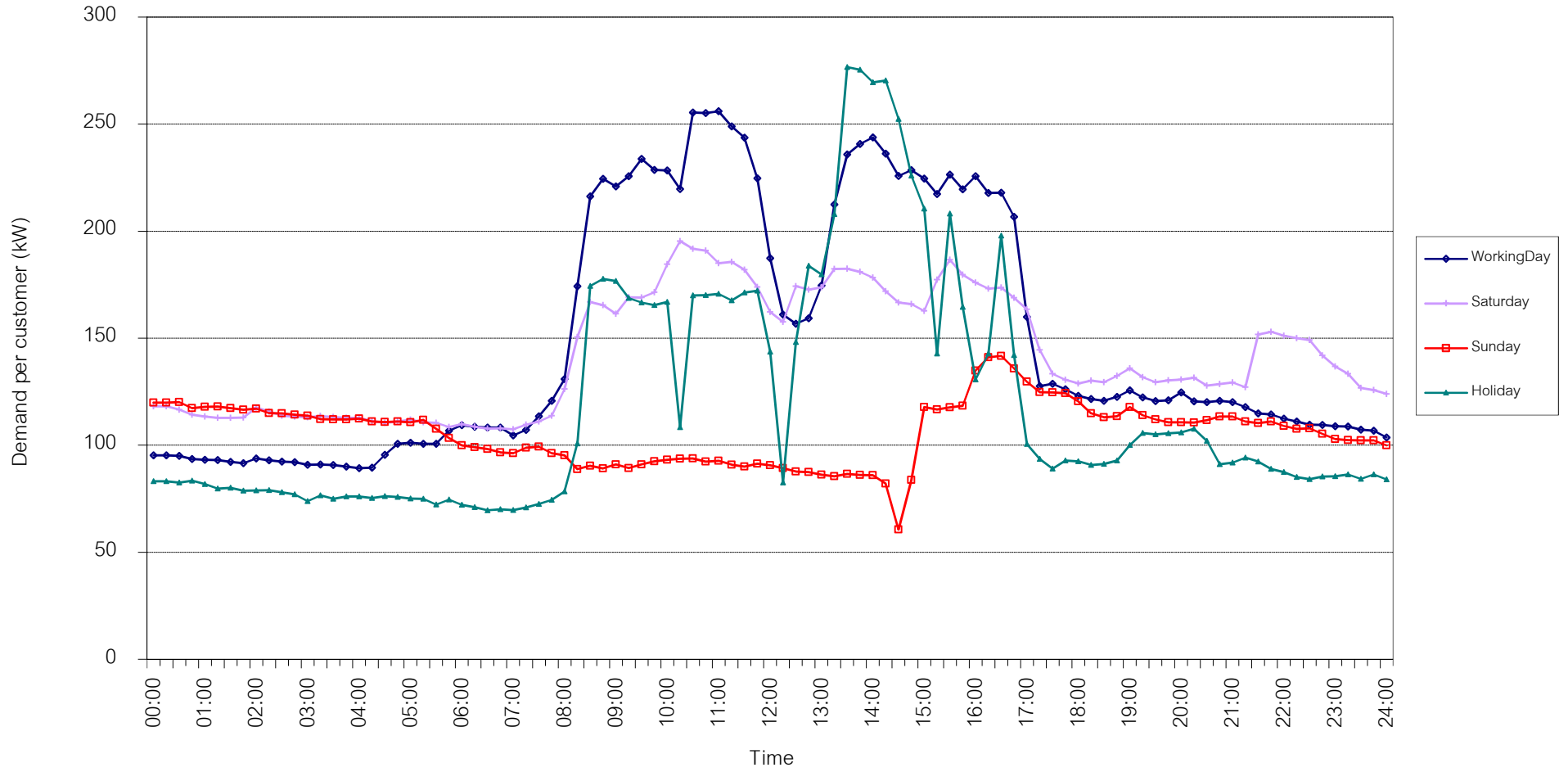


กราฟรูปที่ 12

TSIC 38 (Fabricated Metal Products) Load Profile

Date: 1 Jul, 2019 to 31 Jul, 2019

Number of sample customers = 62

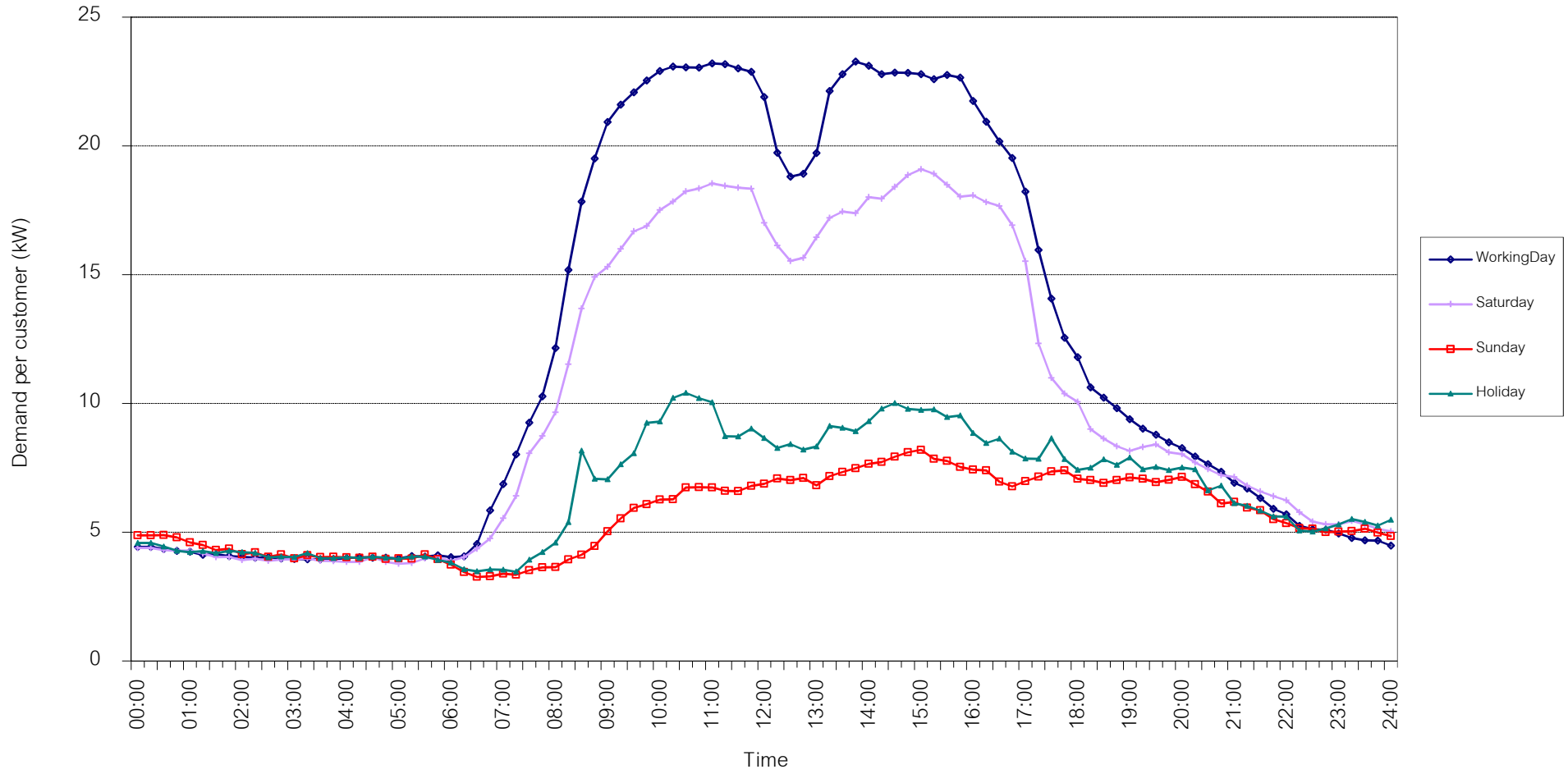


กราฟรูปที่ 13

TSIC 61 (Wholesale Trade) Load Profile

Date: 1 Jul, 2019 to 31 Jul, 2019

Number of sample customers = 48

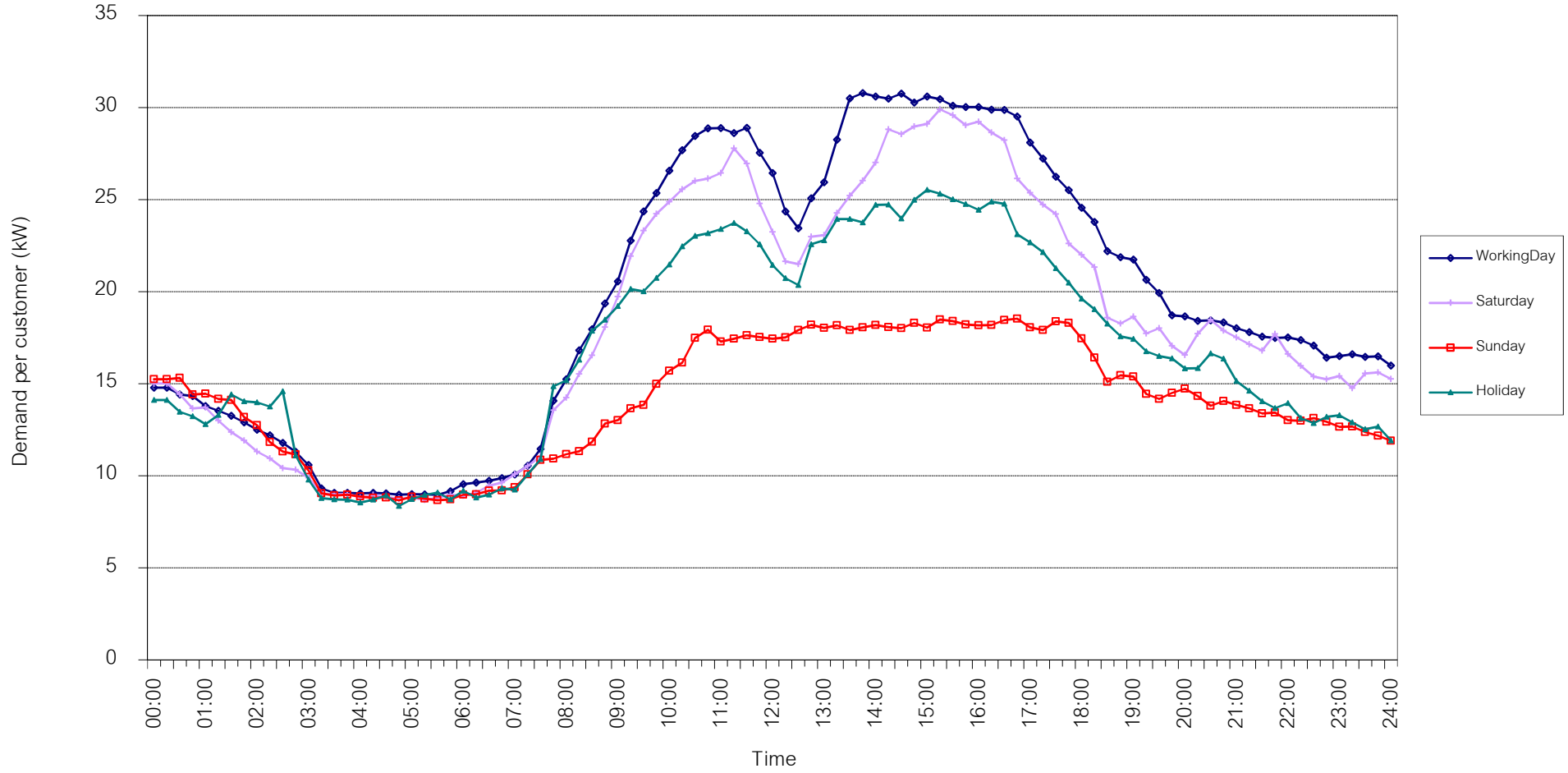


กราฟรูปที่ 14

TSIC 62 (Retail Trade) Load Profile

Date: 1 Jul, 2019 to 31 Jul, 2019

Number of sample customers = 93

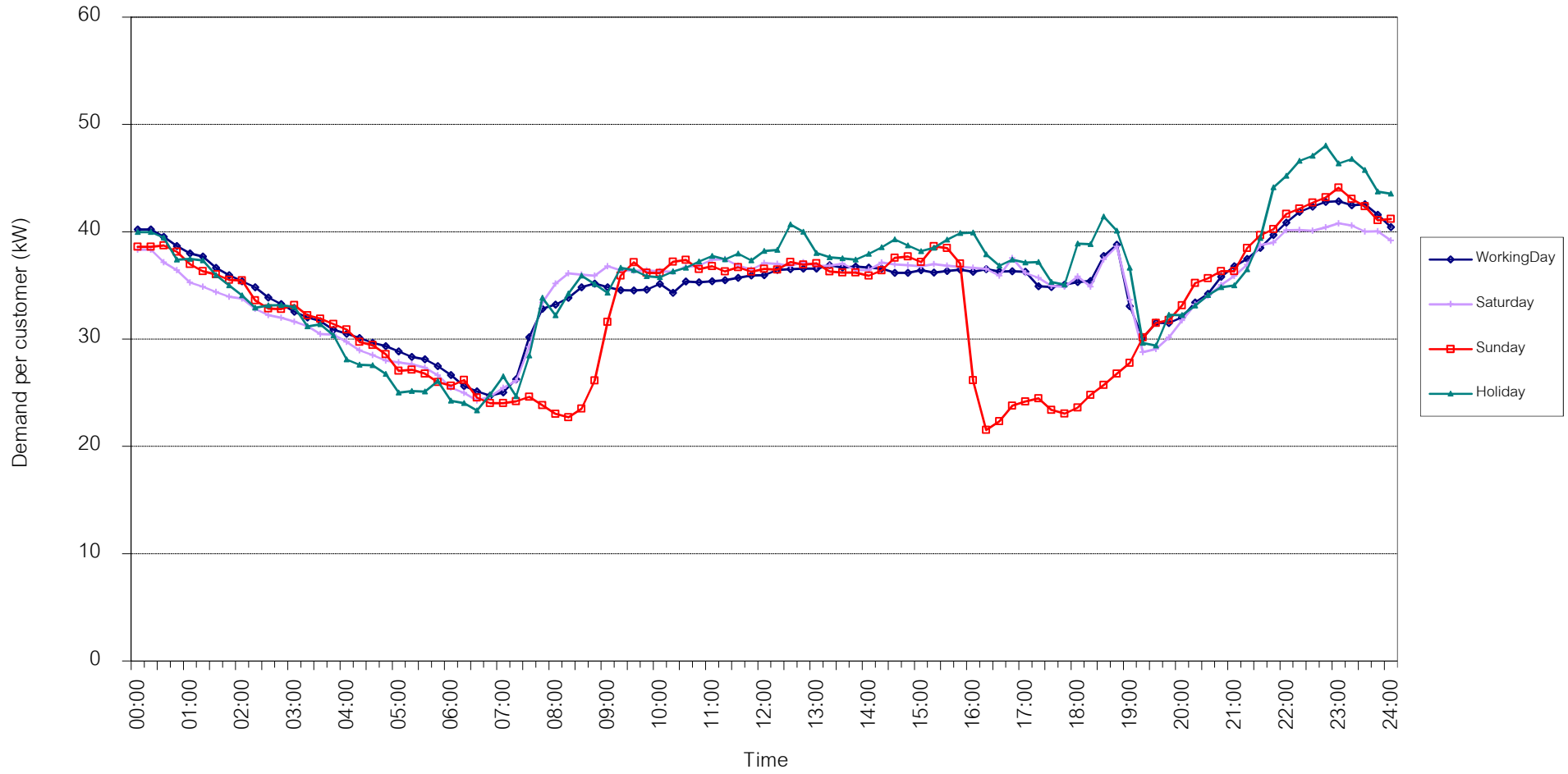


กราฟรูปที่ 15

TSIC 63 (Hotels and restaurants) Load Profile

Date: 1 Jul, 2019 to 31 Jul, 2019

Number of sample customers = 117

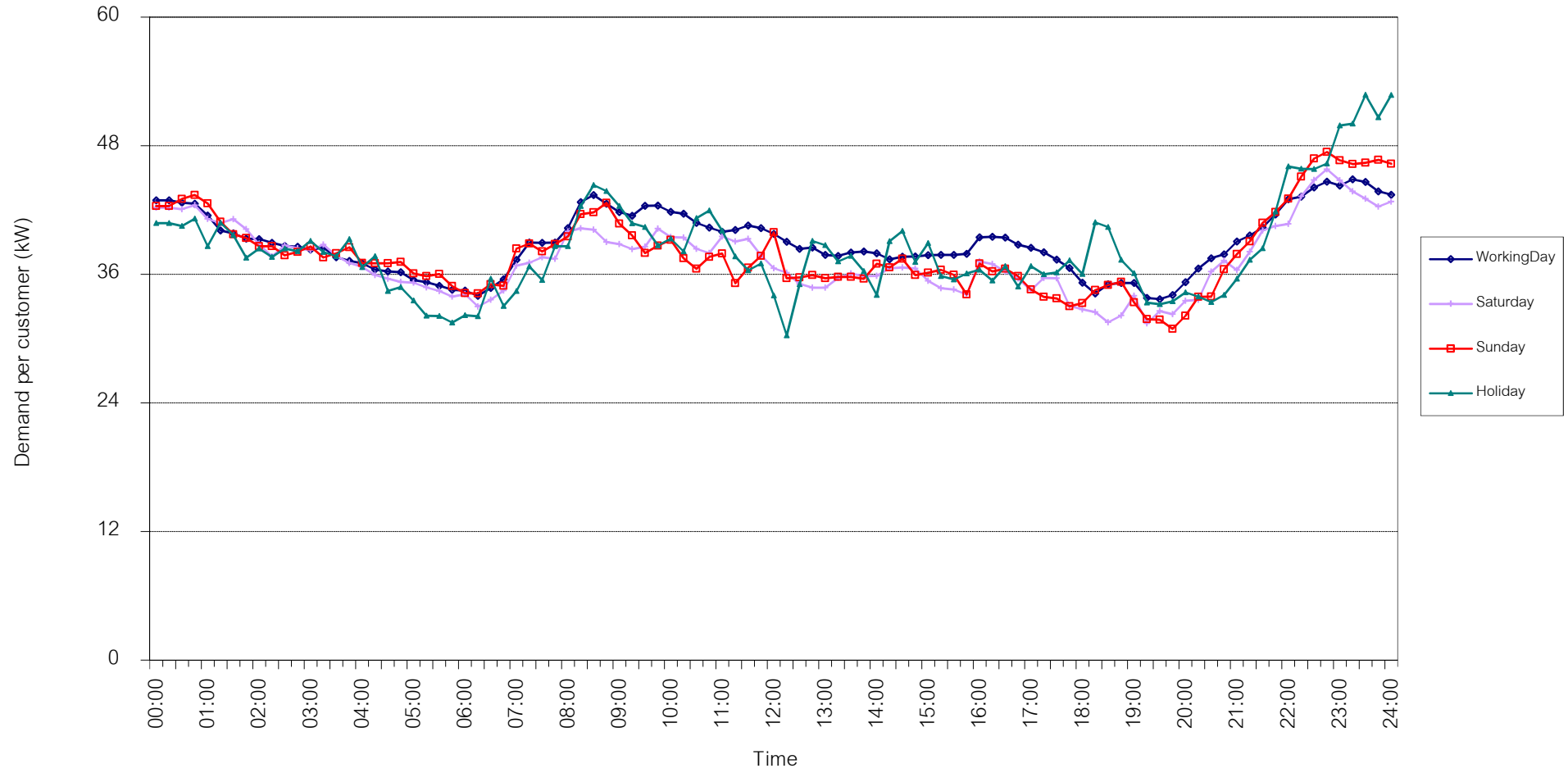


กราฟรูปที่ 16

TSIC 83 (Real Estate) Load Profile

Date: 1 Jul, 2019 to 31 Jul, 2019

Number of sample customers = 47

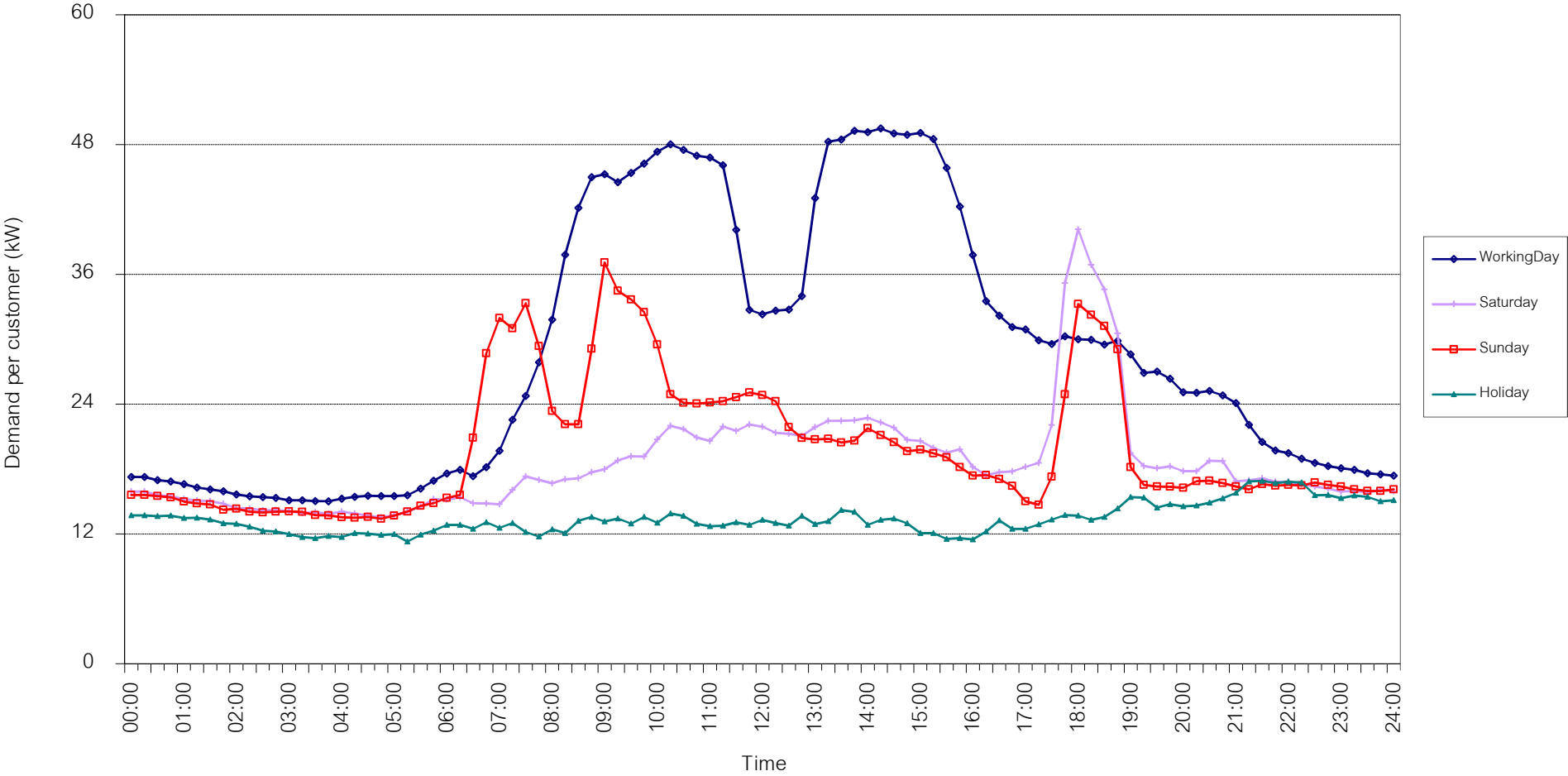


กราฟรูปที่ 17

TSIC 93 (Social Services) Load Profile

Date: 1 Jul, 2019 to 31 Jul, 2019

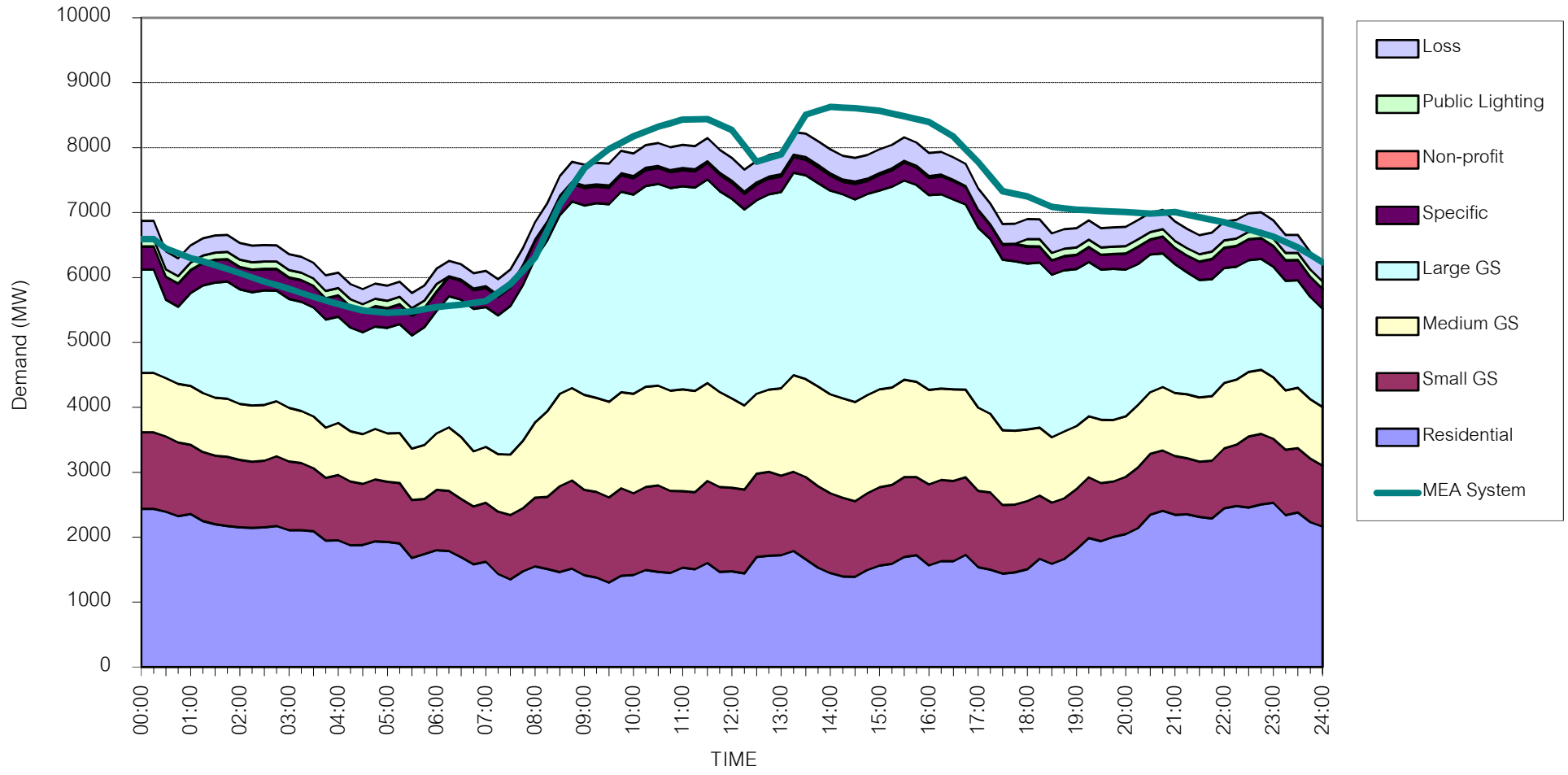
Number of sample customers = 27



กราฟรูปที่ 18

MEA's System Load Profile

Peak Day 23 Jul, 2019 at 14:00



กราฟรูปที่ 19