

ข้อมูลการศึกษาลักษณะการใช้ไฟฟ้า

เดือน มิถุนายน 2562

Table 1-1

COINCIDENT WITH LOAD RESEARCH SYSTEM'S PEAK ON June 4,2019 time 15:45 8,791.74 MW  
 ( MEA SYSTEM'S PEAK ON June 4,2019 time 15:00 8,894.42 MW )

CLASS	Number of Customers	Kilowatt hours	Coincident Peak (MEA System Peak at time 15:00 )		Coincident Peak (Load Research System Peak at time 15:45)		Sector Diversified Demand		
			MW	Contribution (%)	MW	Contribution (%)	Max MW.	Date	Time
Residential	3,291,024	1,270,175,130	1,682.29	19.92	2,074.15	23.59	3,118.78	4 Jun 19	22:30
Small General Service	512,874	724,922,621	1,371.86	16.25	1,433.65	16.31	1,519.73	1 Jun 19	09:30
Medium General Service	23,622	783,829,942	1,661.50	19.68	1,575.91	17.92	1,681.22	6 Jun 19	14:15
Large General Service	2,450	1,574,598,327	3,184.37	37.71	3,170.20	36.06	3,351.88	5 Jun 19	11:15
Specific Business	3,286	194,020,729	274.28	3.25	269.85	3.07	379.96	23 Jun 19	23:15
Non Profit Organization	320	11,634,174	19.39	0.23	19.95	0.23	82.93	11 Jun 19	09:00
Public Lighting	-	41,017,767	0.00	0.00	0.00	0.00	115.17	-	-
Loss	-	132,763,835	249.95	2.96	248.04	2.82	249.95	4 Jun 19	15:00
TOTAL	3,833,576	4,732,962,525	8,443.64	100.00	8,791.74	100.00	8,791.74	4 Jun 19	15:45

Table 1-2

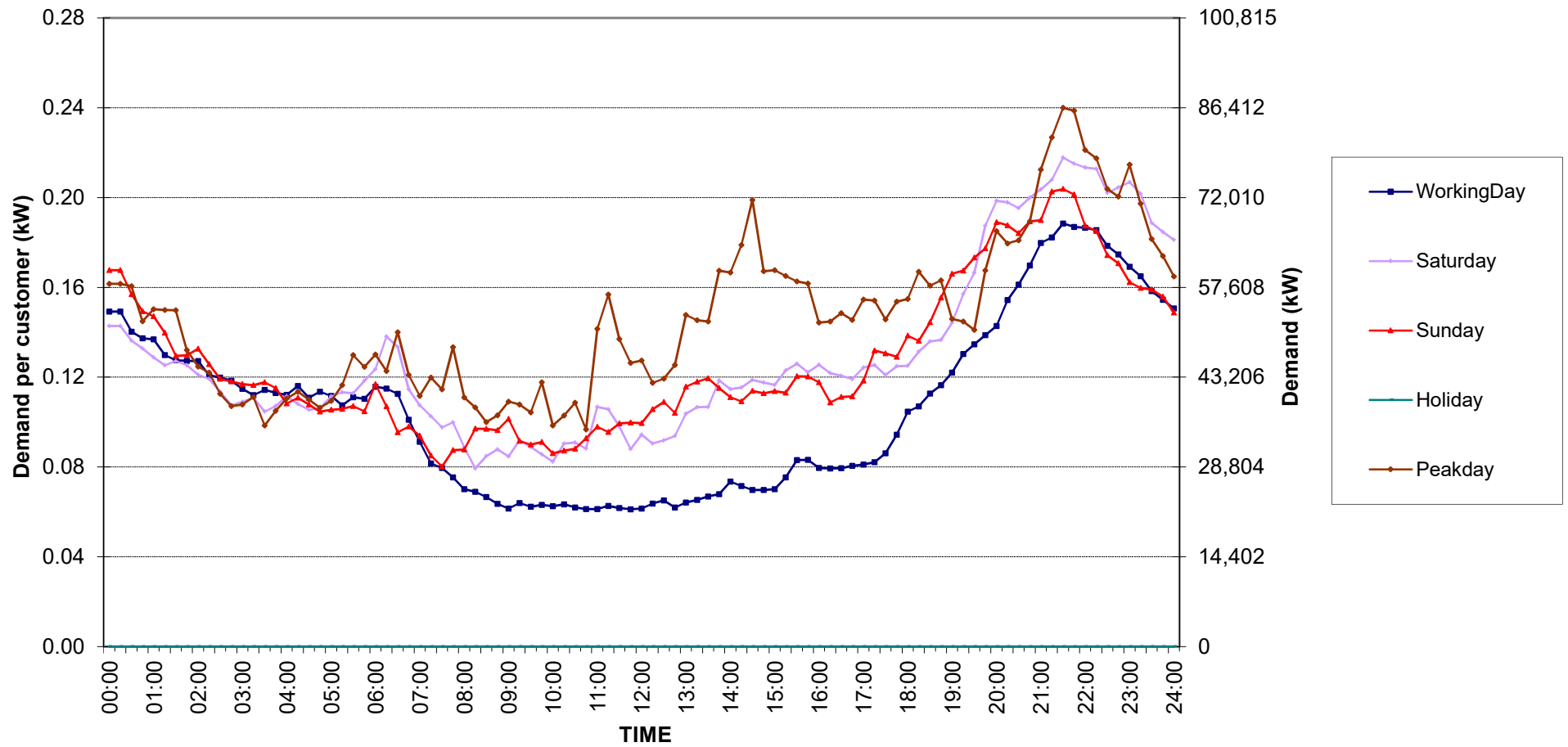
Number of sample customers on June, 2019

CLASS	Number of sample customers (Target)	Number of sample customers (Collected)
Residential	171	171
Small General Service	258	258
Medium General Service	165	165
Large General Service	284	284
Specific Business	74	74
Non-profit Organization	50	50
TOTAL	1,002	1,002

Residential ( Energy Consumption less than 150 kWh per month )

Date: 1 Jun, 2019 to 30 Jun, 2019

Number of sample customers = 52

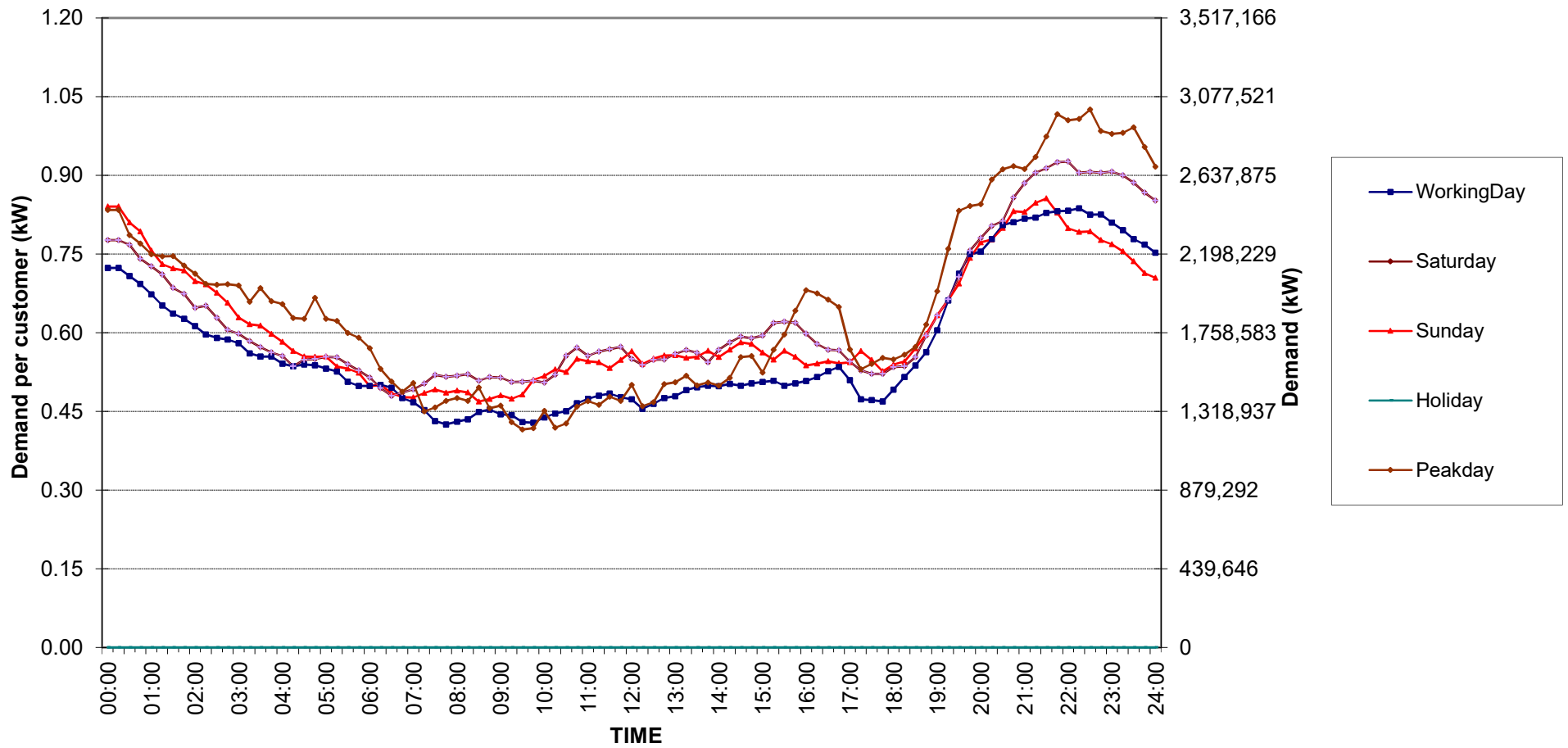


กราฟรูปที่ 1

Residential ( Energy Consumption more than 150 kWh per month )

Date: 1 Jun, 2019 to 30 Jun, 2019

Number of sample customers = 119

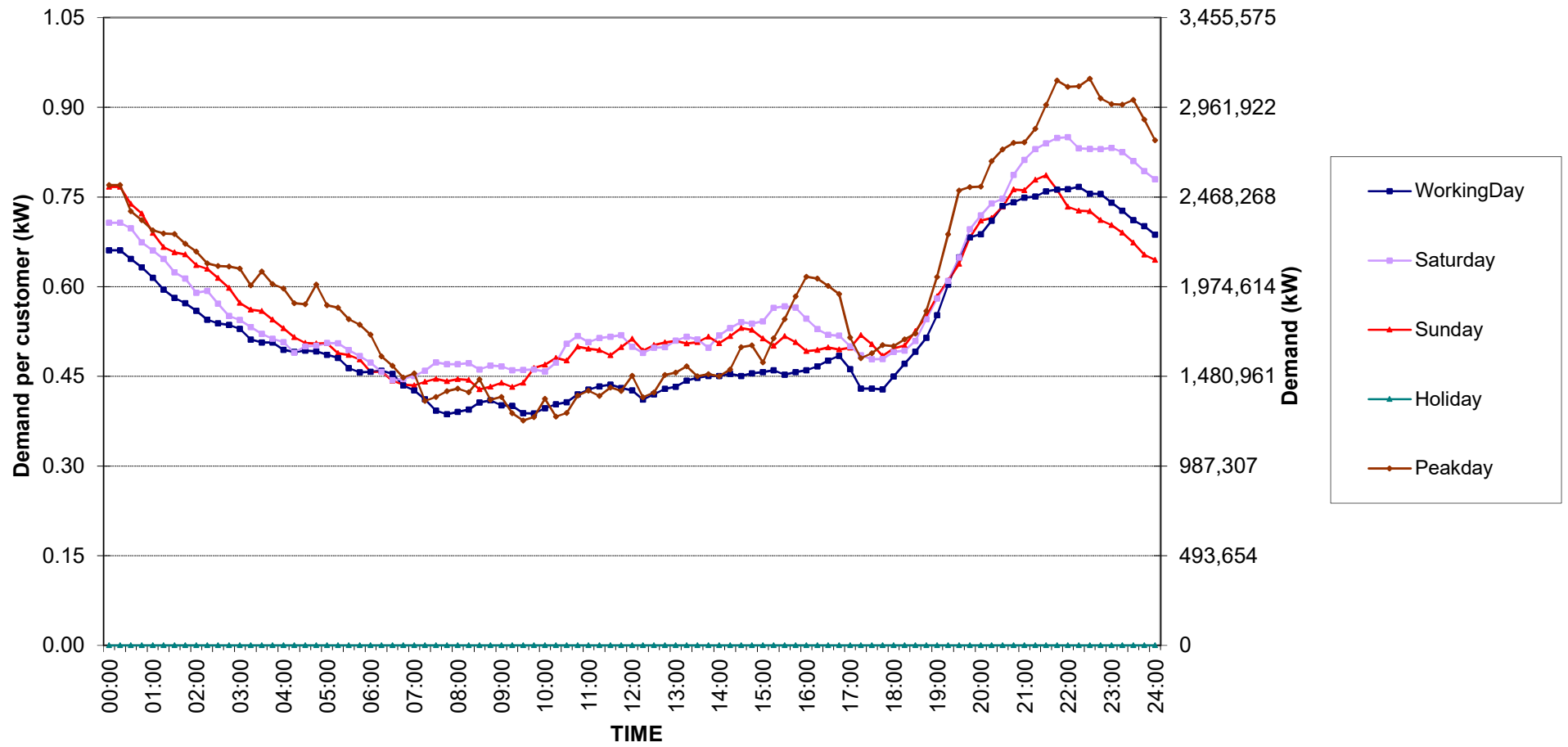


กราฟรูปที่ 2

# Residential Load Profile

Date: 1 Jun, 2019 to 30 Jun, 2019

Number of sample customers = 171

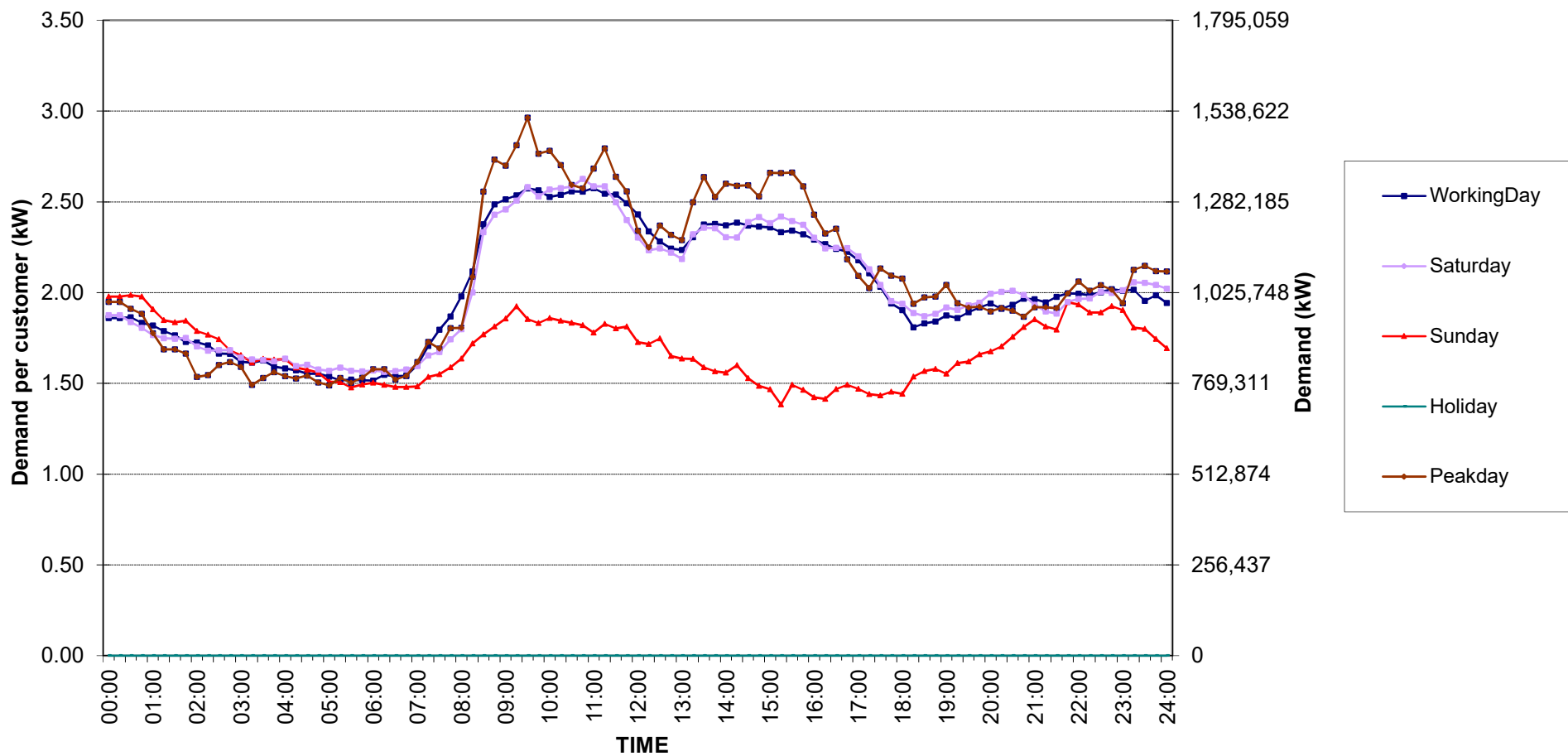


กราฟรูปที่ 3

# Small General Services Load Profile

Date: 1 Jun, 2019 to 30 Jun, 2019

Number of sample customers = 258

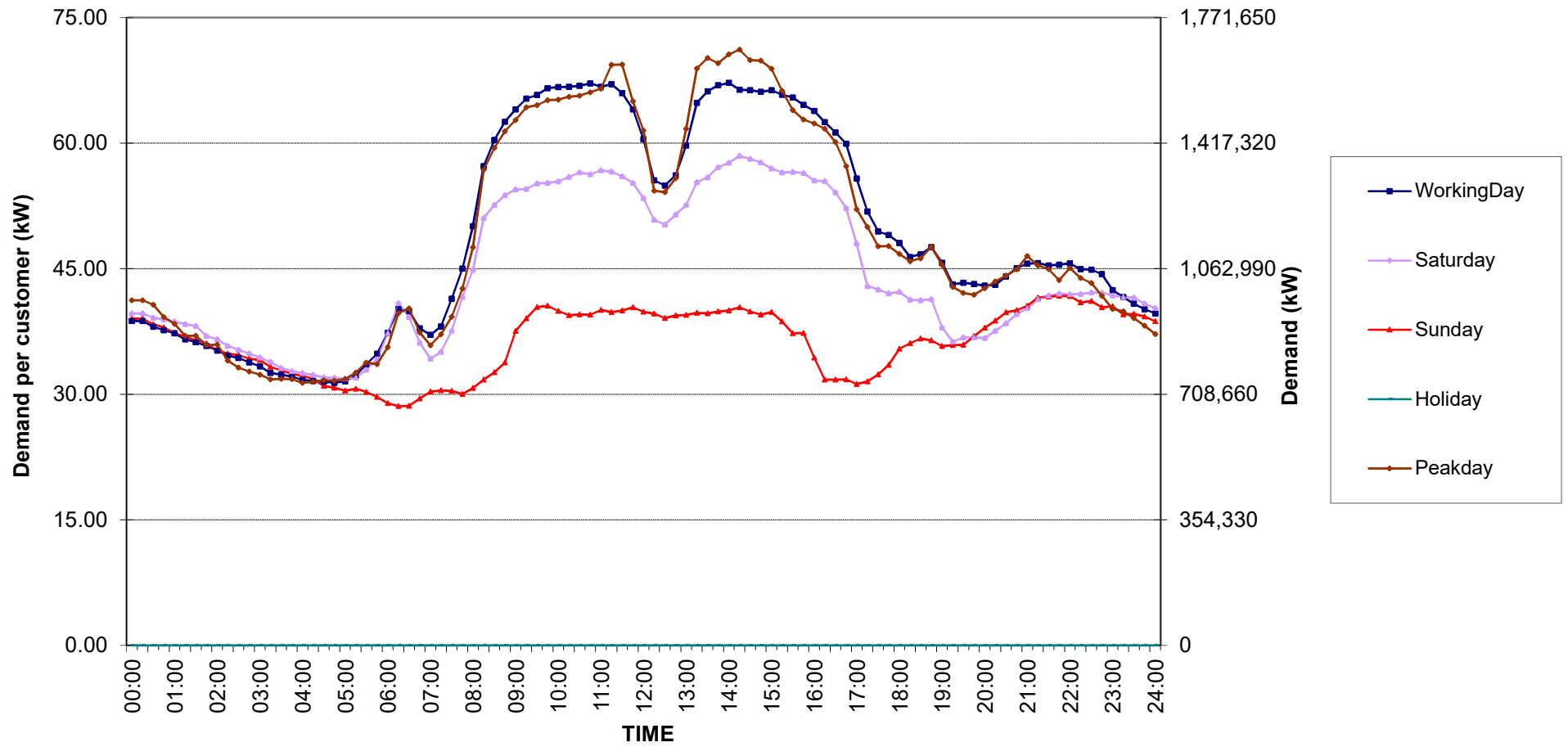


กราฟรูปที่ 4

# Medium General Services Load Profile

Date: 1 Jun, 2019 to 30 Jun, 2019

Number of sample customers = 165



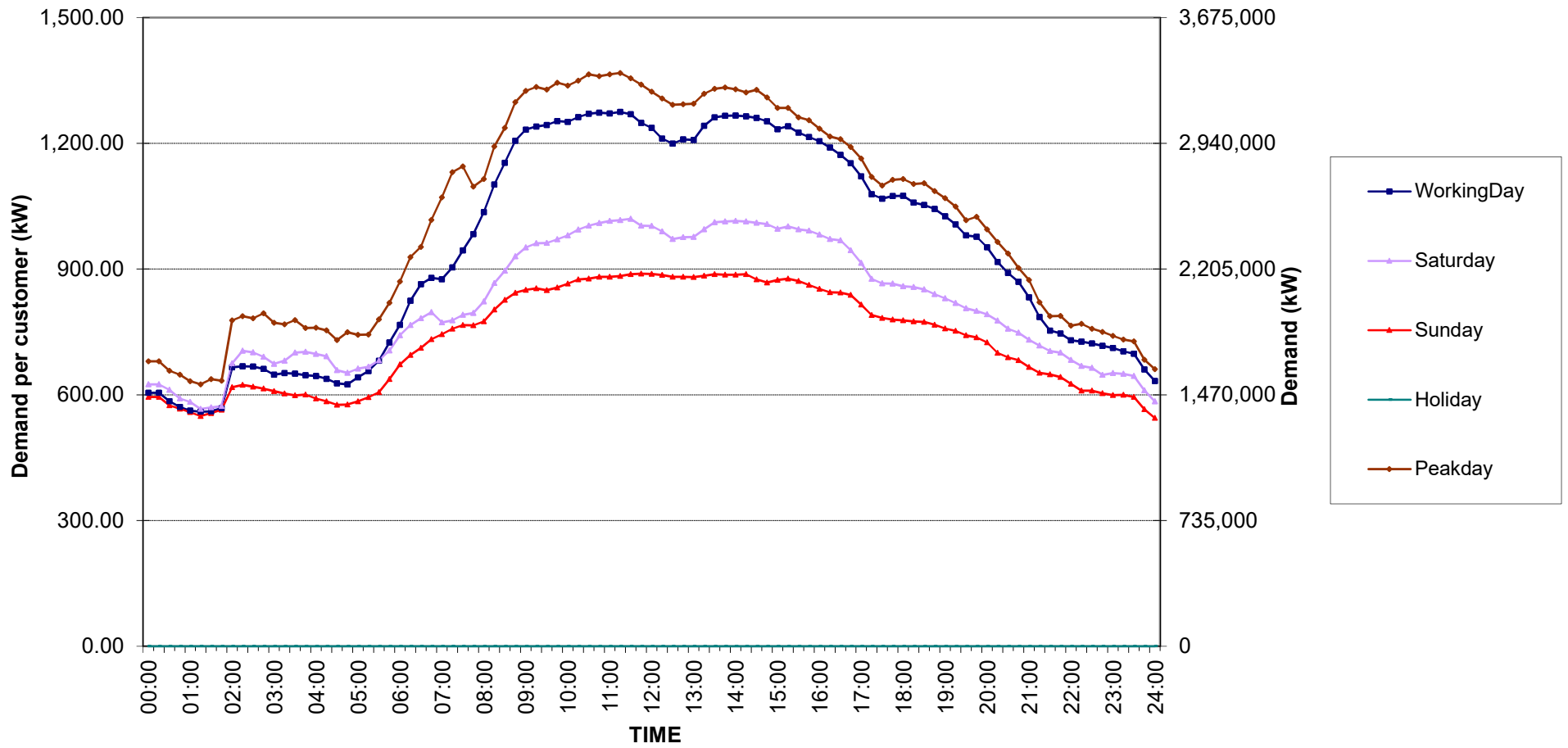
กราฟรูปที่ 5



# Large General Services Load Profile

Date: 1 Jun, 2019 to 30 Jun, 2019

Number of sample customers = 284

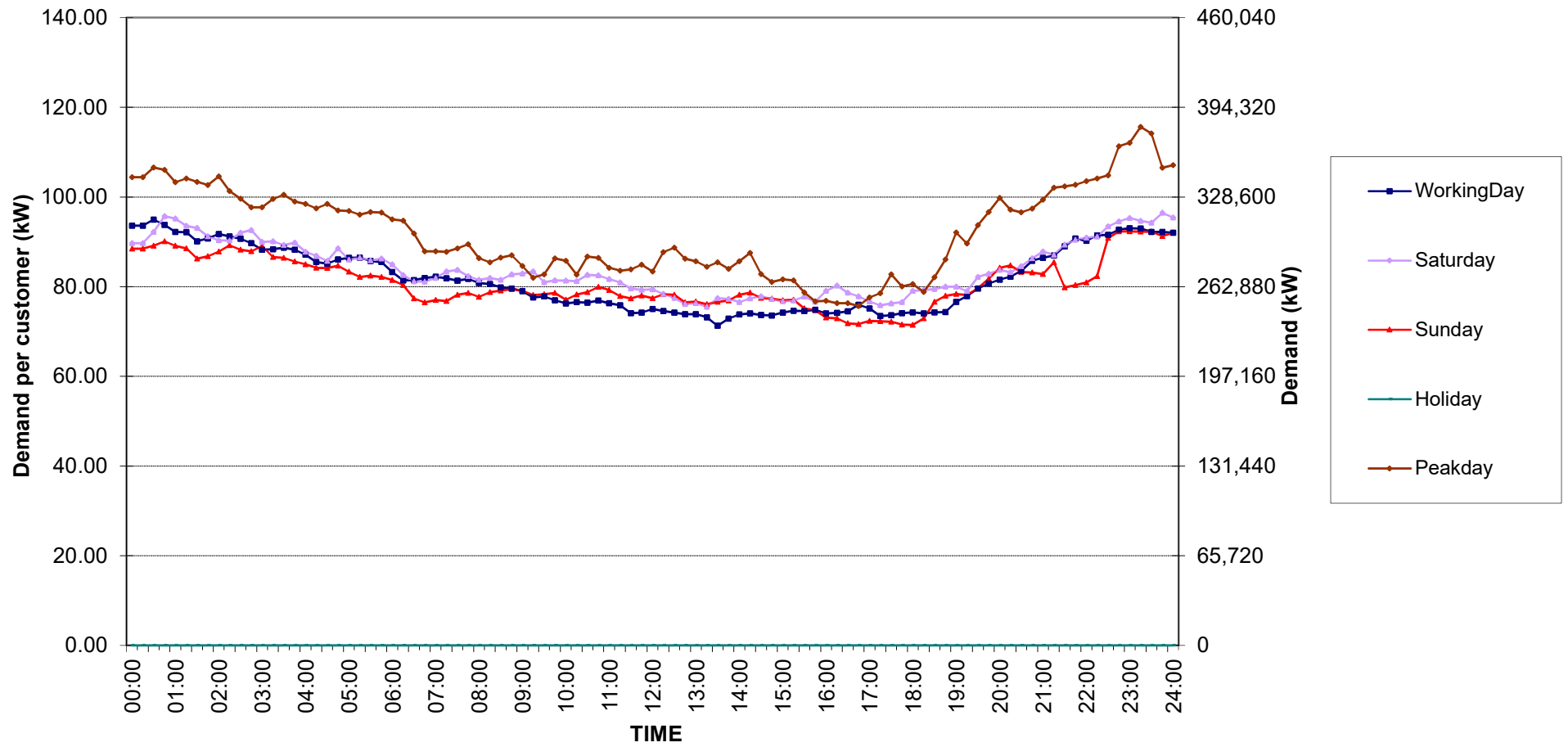


กราฟรูปที่ 6

### Specific Business Load Profile

Date: 1 Jun, 2019 to 30 Jun, 2019

Number of sample customers = 74

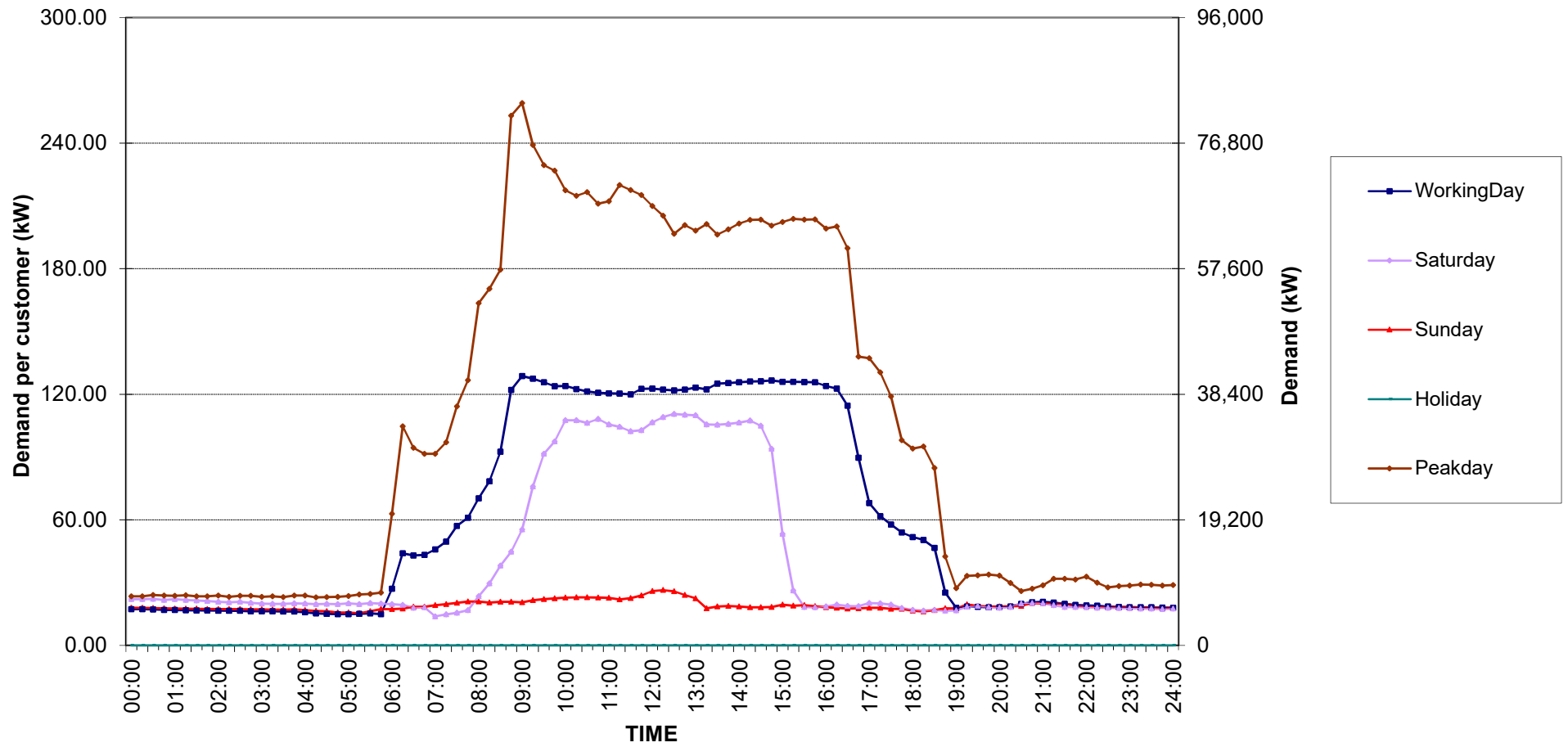


กราฟรูปที่ 7

# Non-profit organizations Load Profile

Date: 1 Jun, 2019 to 30 Jun, 2019

Number of sample customers = 50

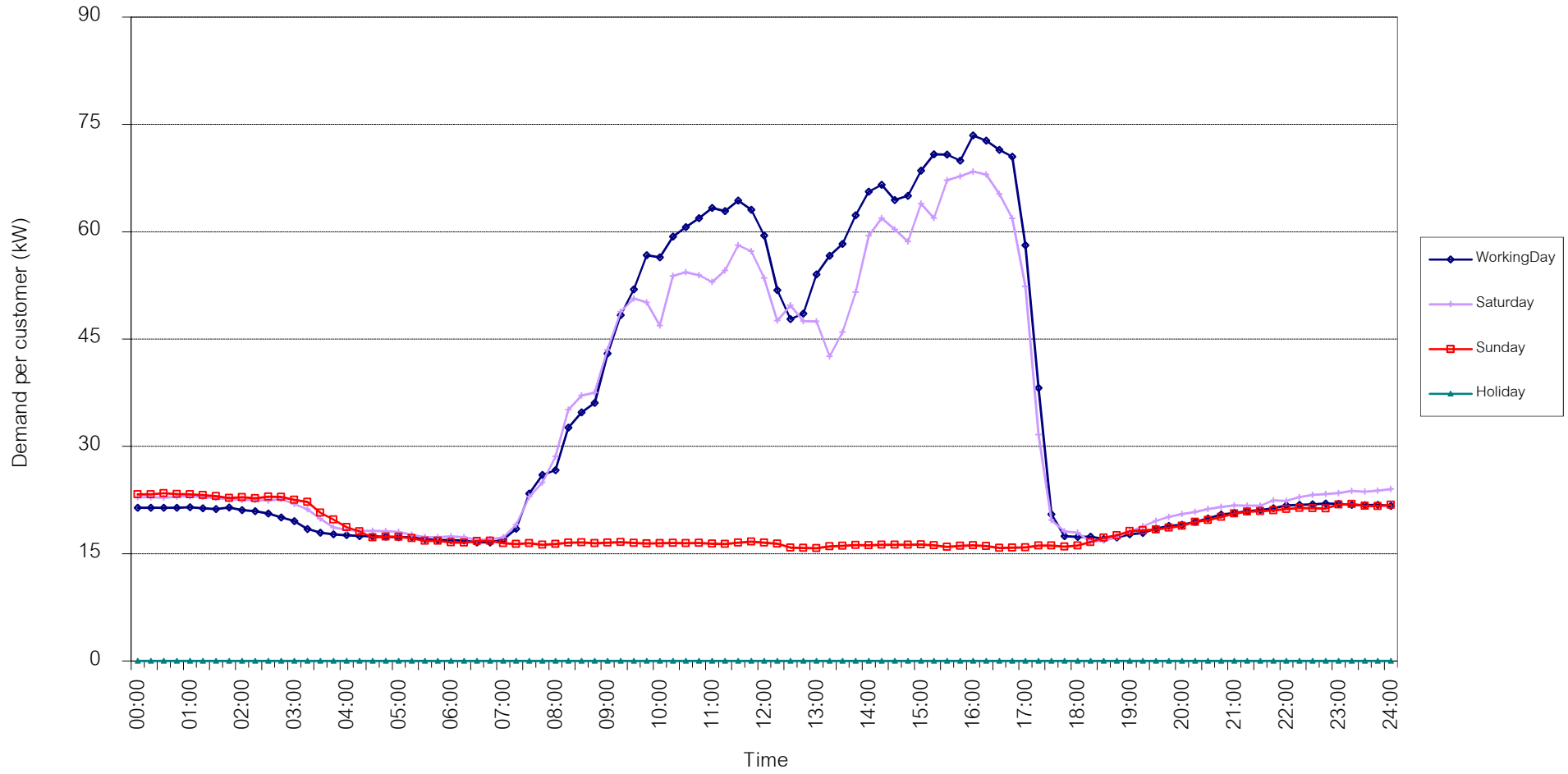


กราฟรูปที่ 8

TSIC 31 (Food Processing) Load Profile

Date: 1 Jun, 2019 to 30 Jun, 2019

Number of sample customers = 32

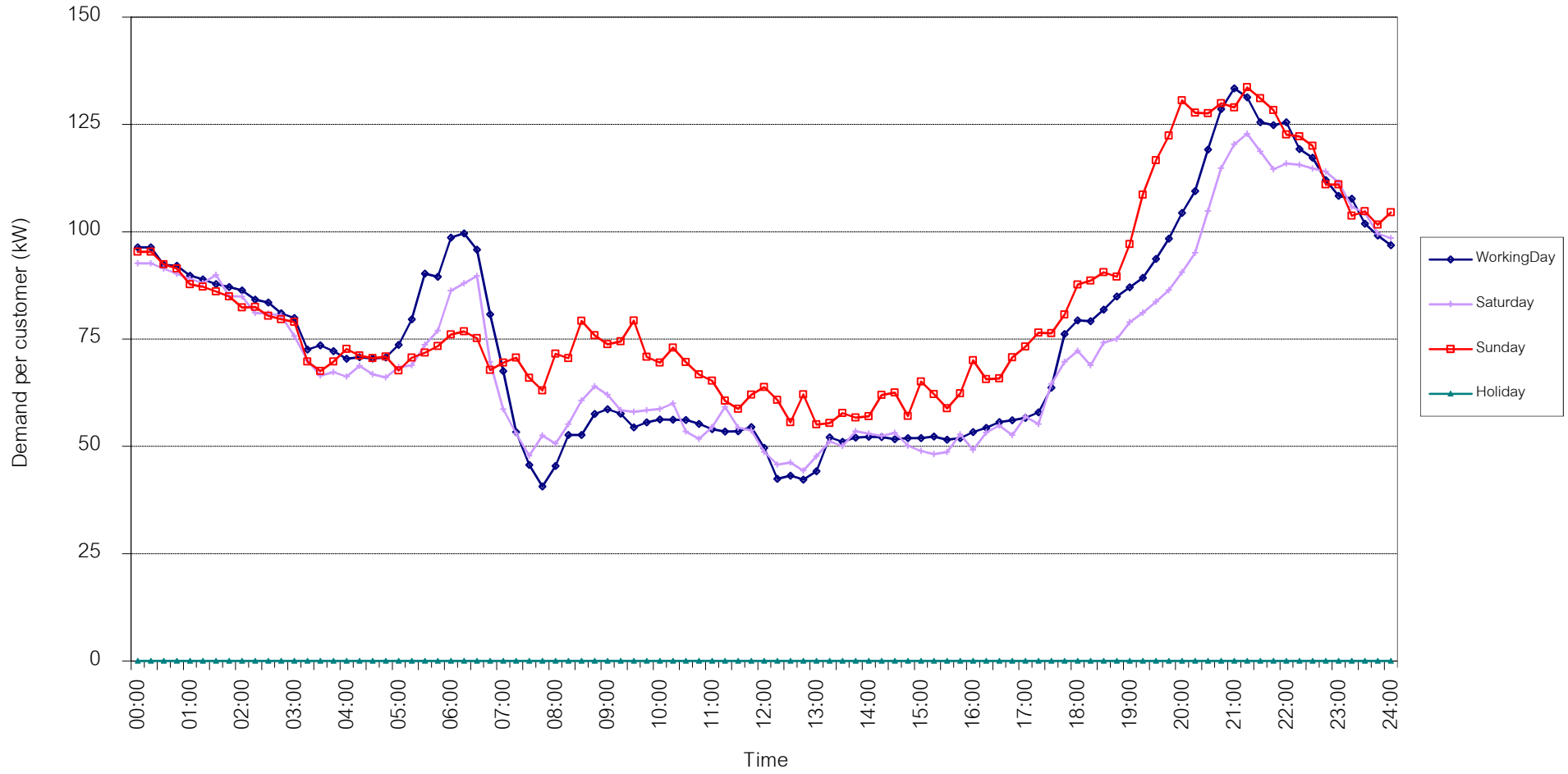


กราฟรูปที่ 9

TSIC 32 (Textiles) Load Profile

Date: 1 Jun, 2019 to 30 Jun, 2019

Number of sample customers = 67

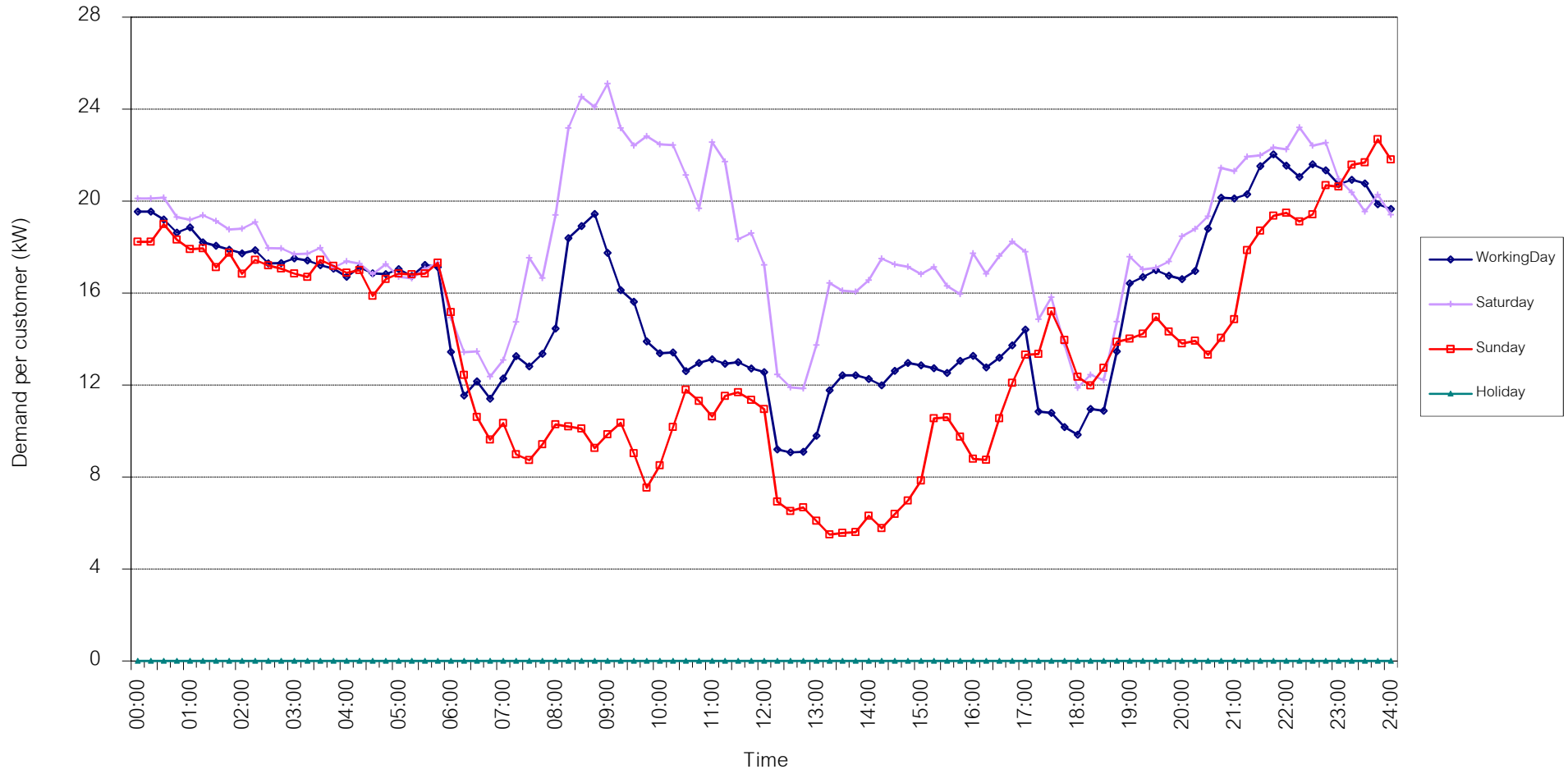


กราฟรูปที่ 10

TSIC 34 (Paper & Printing) Load Profile

Date: 1 Jun, 2019 to 30 Jun, 2019

Number of sample customers = 12

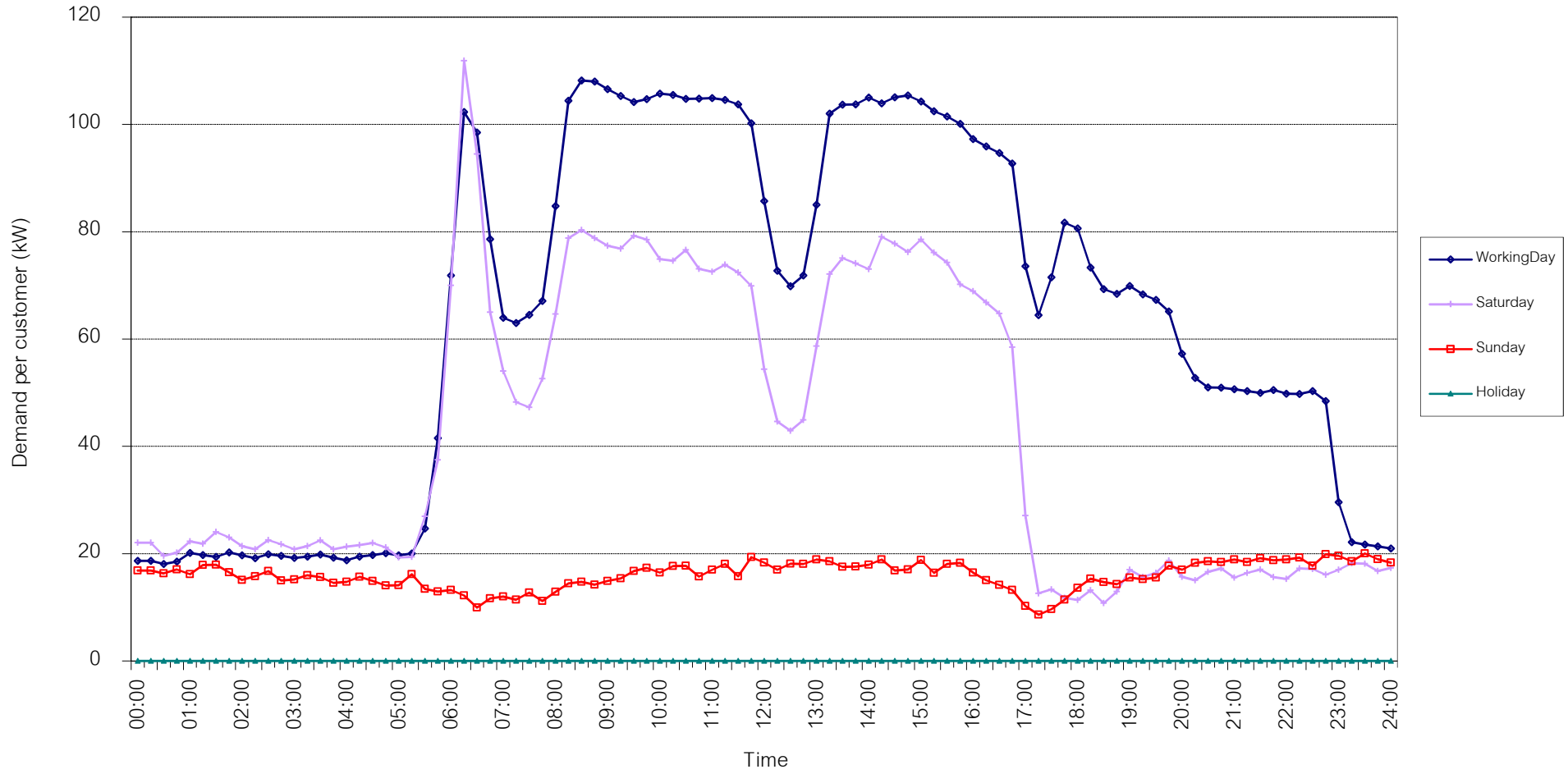


กราฟรูปที่ 11

TSIC 35 (Chemical & Petroleum) Load Profile

Date: 1 Jun, 2019 to 30 Jun, 2019

Number of sample customers = 75

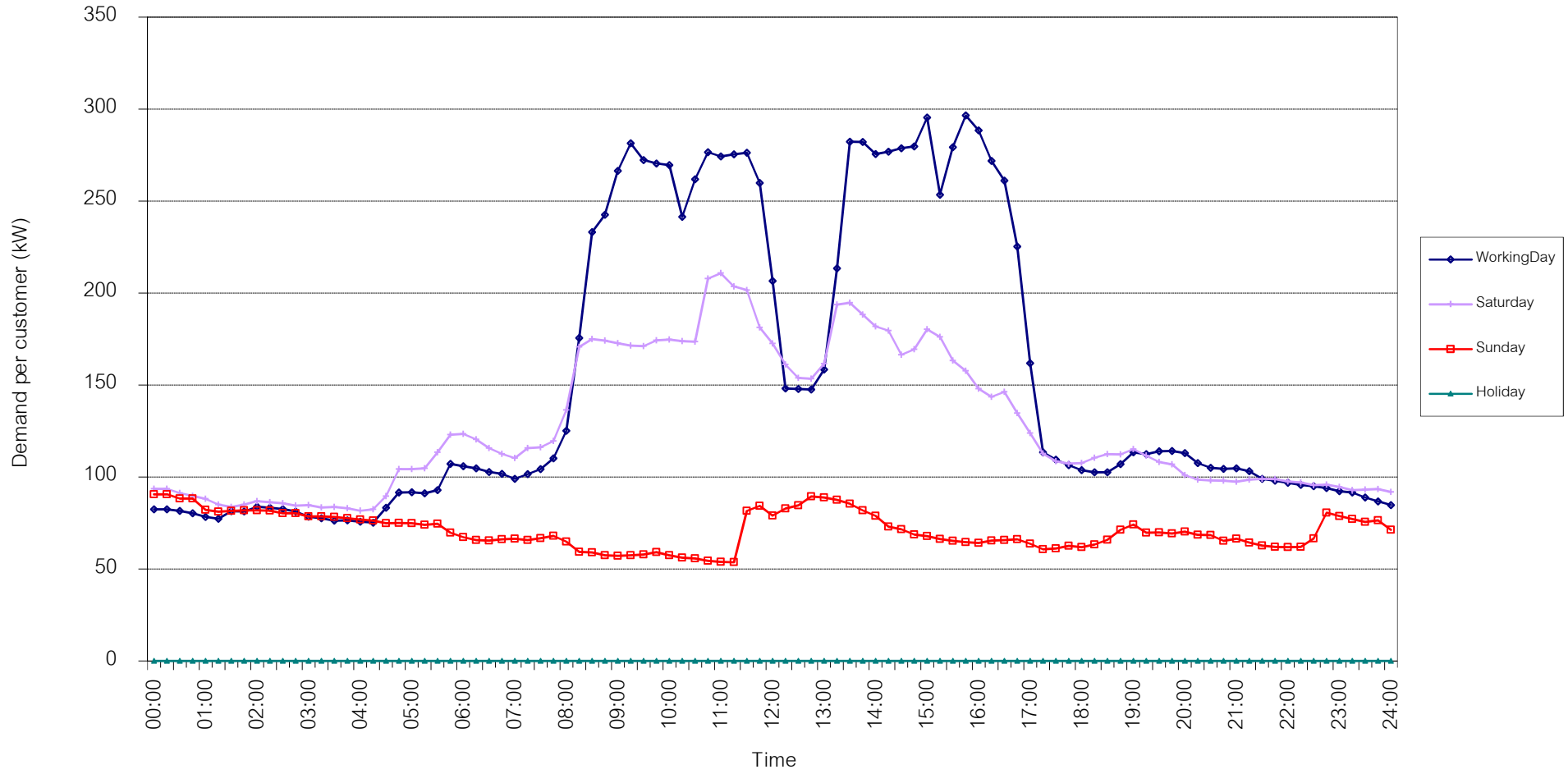


กราฟรูปที่ 12

TSIC 38 (Fabricated Metal Products) Load Profile

Date: 1 Jun, 2019 to 30 Jun, 2019

Number of sample customers = 62



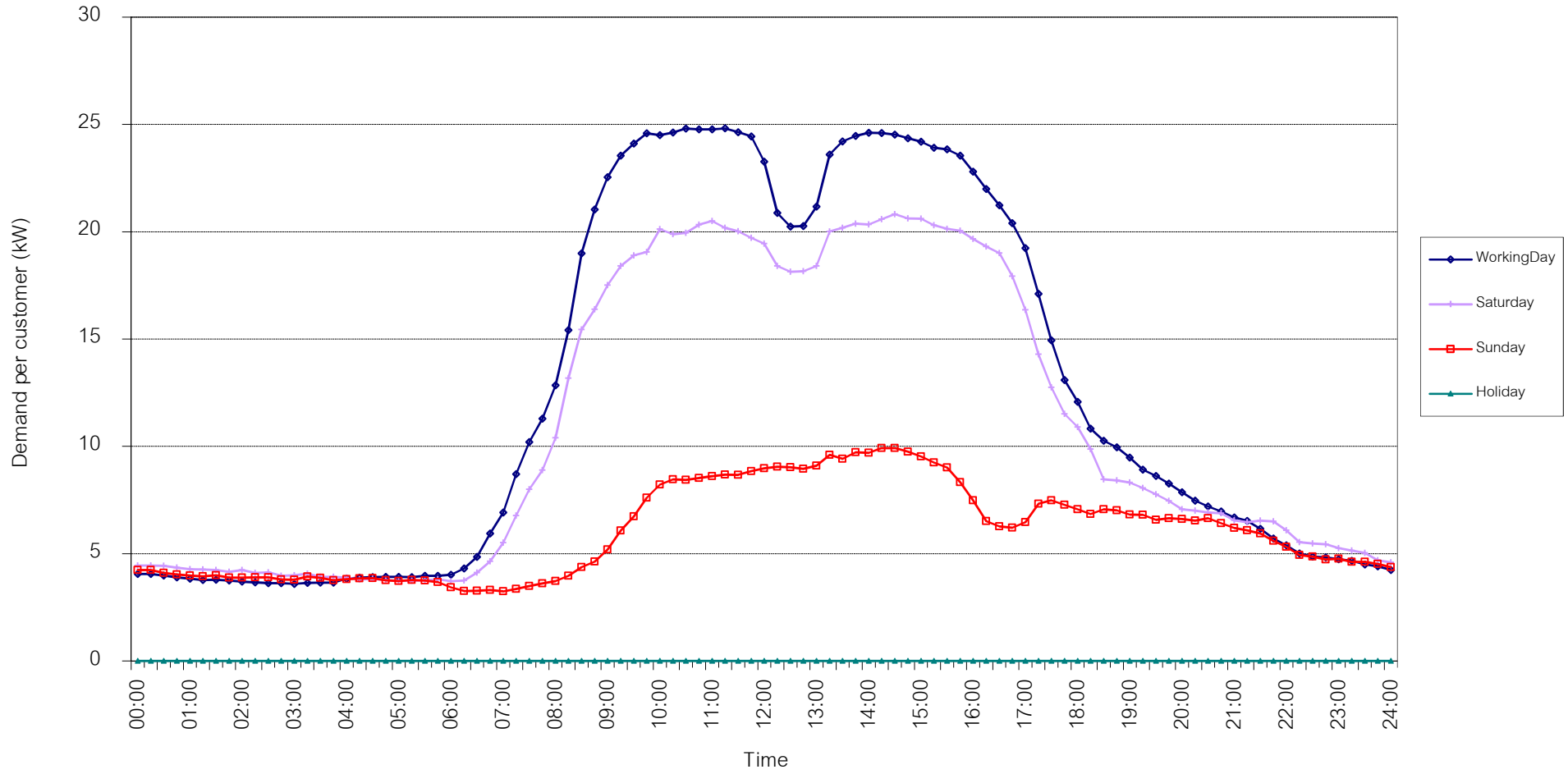
กราฟรูปที่ 13



TSIC 61 (Wholesale Trade) Load Profile

Date: 1 Jun, 2019 to 30 Jun, 2019

Number of sample customers = 48

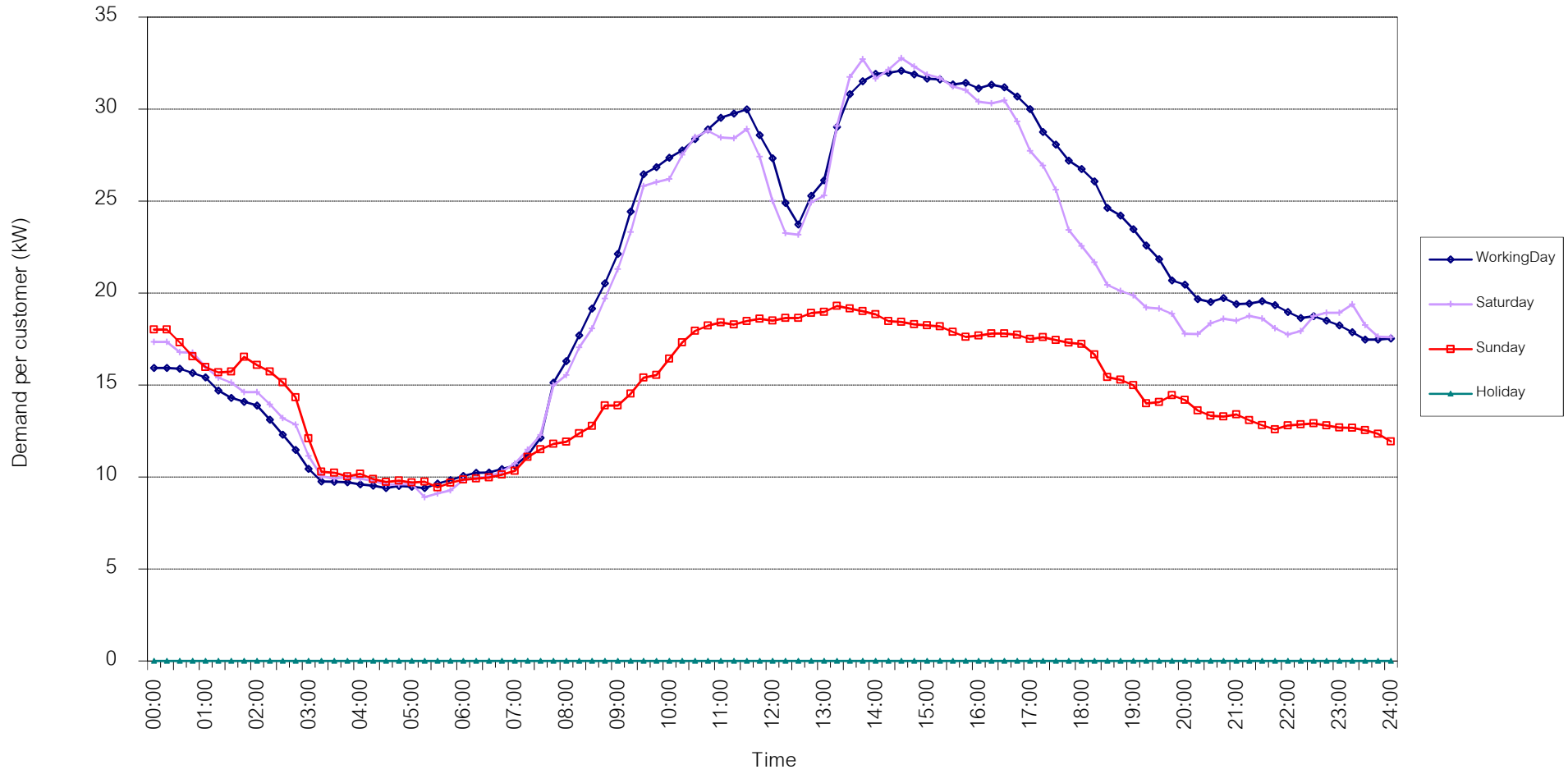


กราฟรูปที่ 14

TSIC 62 (Retail Trade) Load Profile

Date: 1 Jun, 2019 to 30 Jun, 2019

Number of sample customers = 93

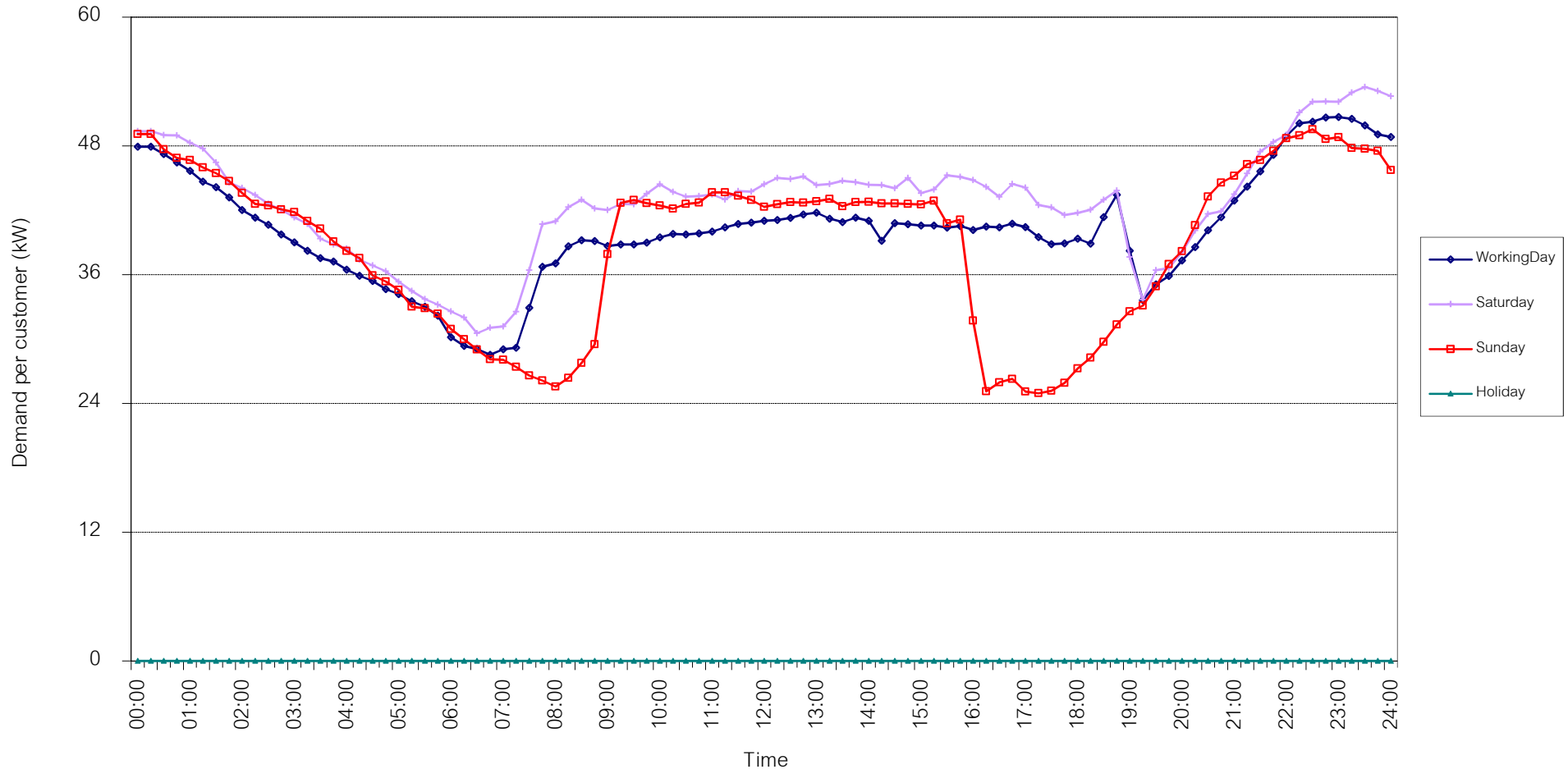


กราฟรูปที่ 15

TSIC 63 (Hotels and restaurants) Load Profile

Date: 1 Jun, 2019 to 30 Jun, 2019

Number of sample customers = 117

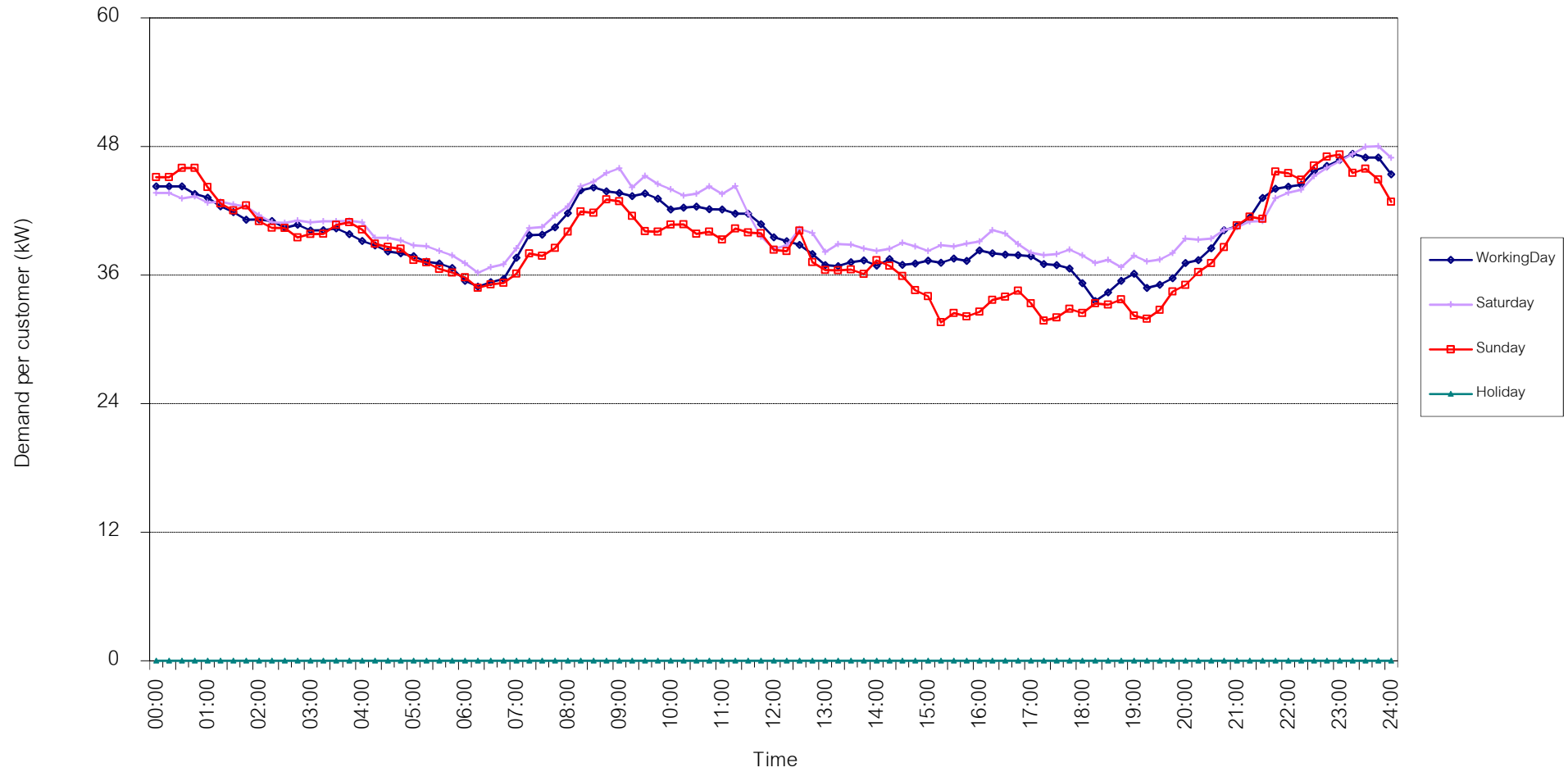


กราฟรูปที่ 16

TSIC 83 (Real Estate) Load Profile

Date: 1 Jun, 2019 to 30 Jun, 2019

Number of sample customers = 47

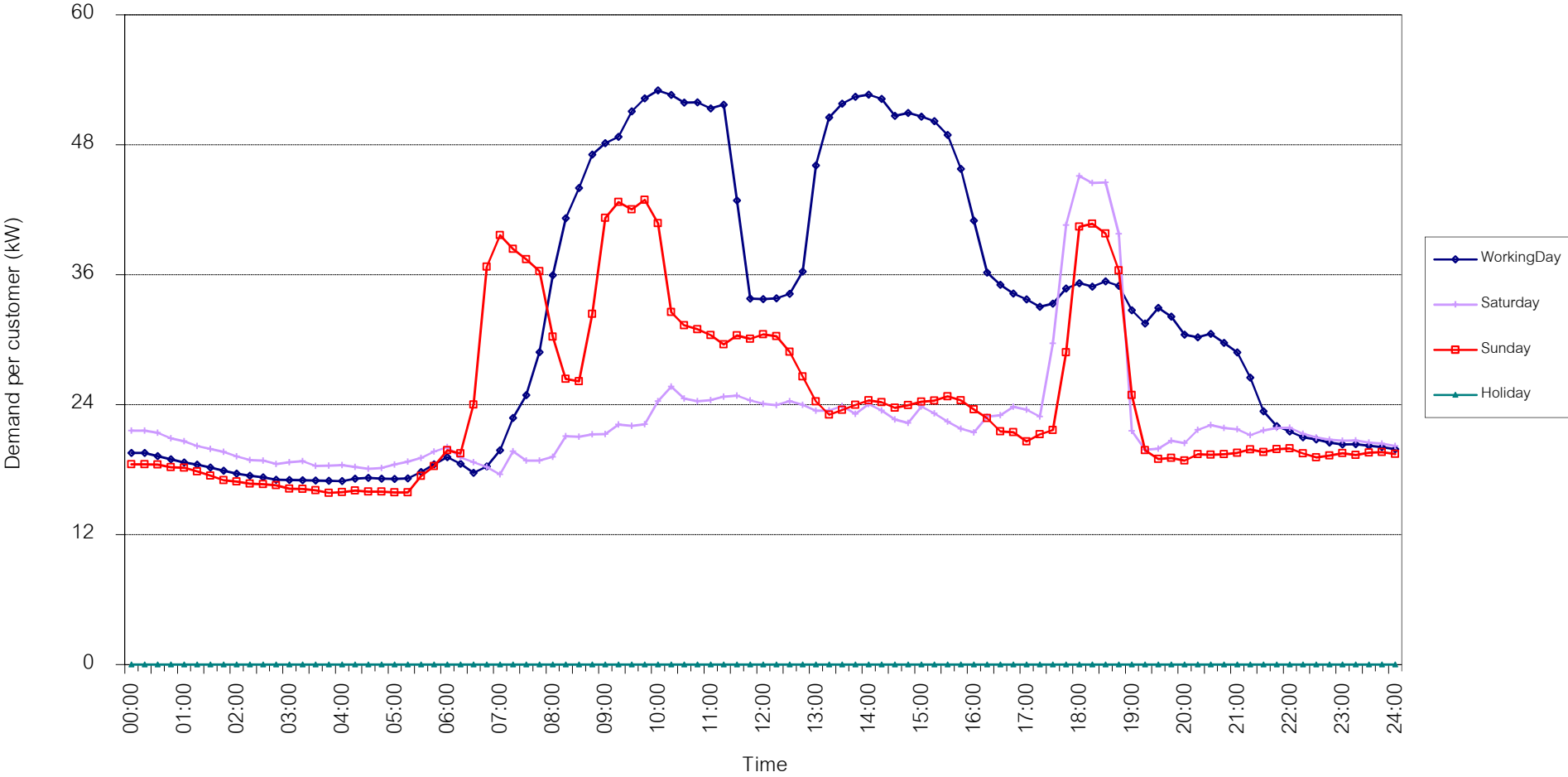


กราฟรูปที่ 17

TSIC 93 (Social Services) Load Profile

Date: 1 Jun, 2019 to 30 Jun, 2019

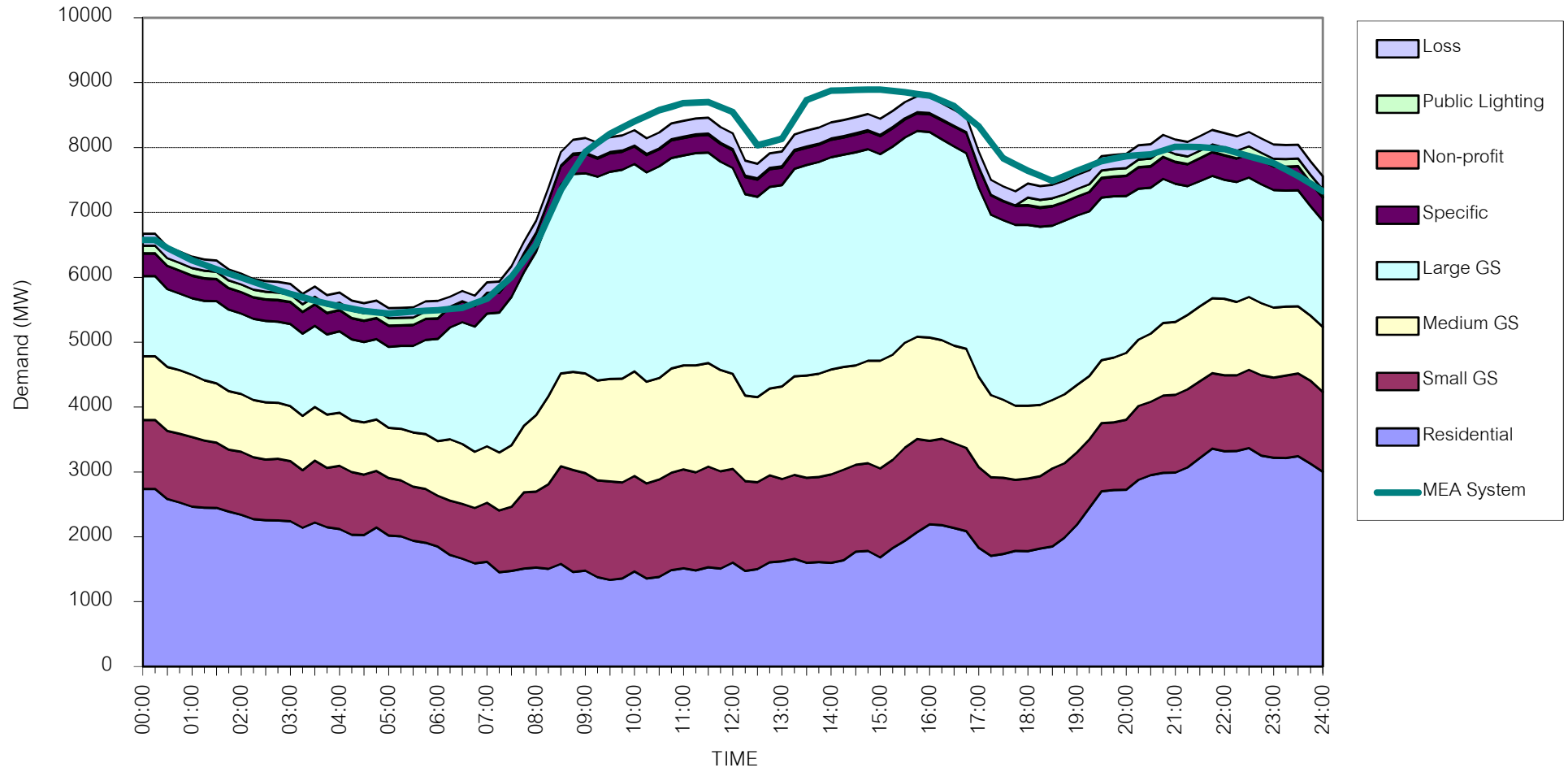
Number of sample customers = 27



กราฟรูปที่ 18

# MEA's System Load Profile

Peak Day 4 Jun, 2019 at 15:00



กราฟรูปที่ 19