

ข้อมูลการศึกษาลักษณะการใช้ไฟฟ้า

เดือน พฤษภาคม 2562

Table 1-1

COINCIDENT WITH LOAD RESEARCH SYSTEM'S PEAK ON May 3,2019 time 14:45 9,253.70 MW
 (MEA SYSTEM'S PEAK ON May 3,2019 time 15:00 9,509.30 MW)

CLASS	Number of Customers	Kilowatt hours	Coincident Peak (MEA System Peak at time 15:00)		Coincident Peak (Load Research System Peak at time 14:45)		Sector Diversified Demand		
			MW	Contribution (%)	MW	Contribution (%)	Max MW.	Date	Time
Residential	3,282,119	1,439,794,428	2,199.15	23.99	2,180.37	23.56	3,252.07	7 May 19	21:30
Small General Service	512,387	771,978,868	1,358.20	14.81	1,403.10	15.16	1,494.20	1 May 19	10:15
Medium General Service	23,629	816,427,839	1,589.95	17.34	1,615.74	17.46	1,829.20	21 May 19	14:15
Large General Service	2,446	1,646,516,811	3,301.39	36.01	3,342.79	36.12	3,401.27	7 May 19	13:30
Specific Business	3,271	208,005,133	322.78	3.52	316.19	3.42	399.92	3 May 19	23:30
Non Profit Organization	319	12,326,786	36.43	0.40	35.67	0.39	45.58	7 May 19	13:45
Public Lighting	-	42,371,217	0.00	0.00	0.00	0.00	116.92	-	-
Loss	-	190,627,737	359.88	3.93	359.83	3.89	359.88	3 May 19	15:00
TOTAL	3,824,171	5,128,048,819	9,167.78	100.00	9,253.70	100.00	9,253.70	3 May 19	14:45

Table 1-2

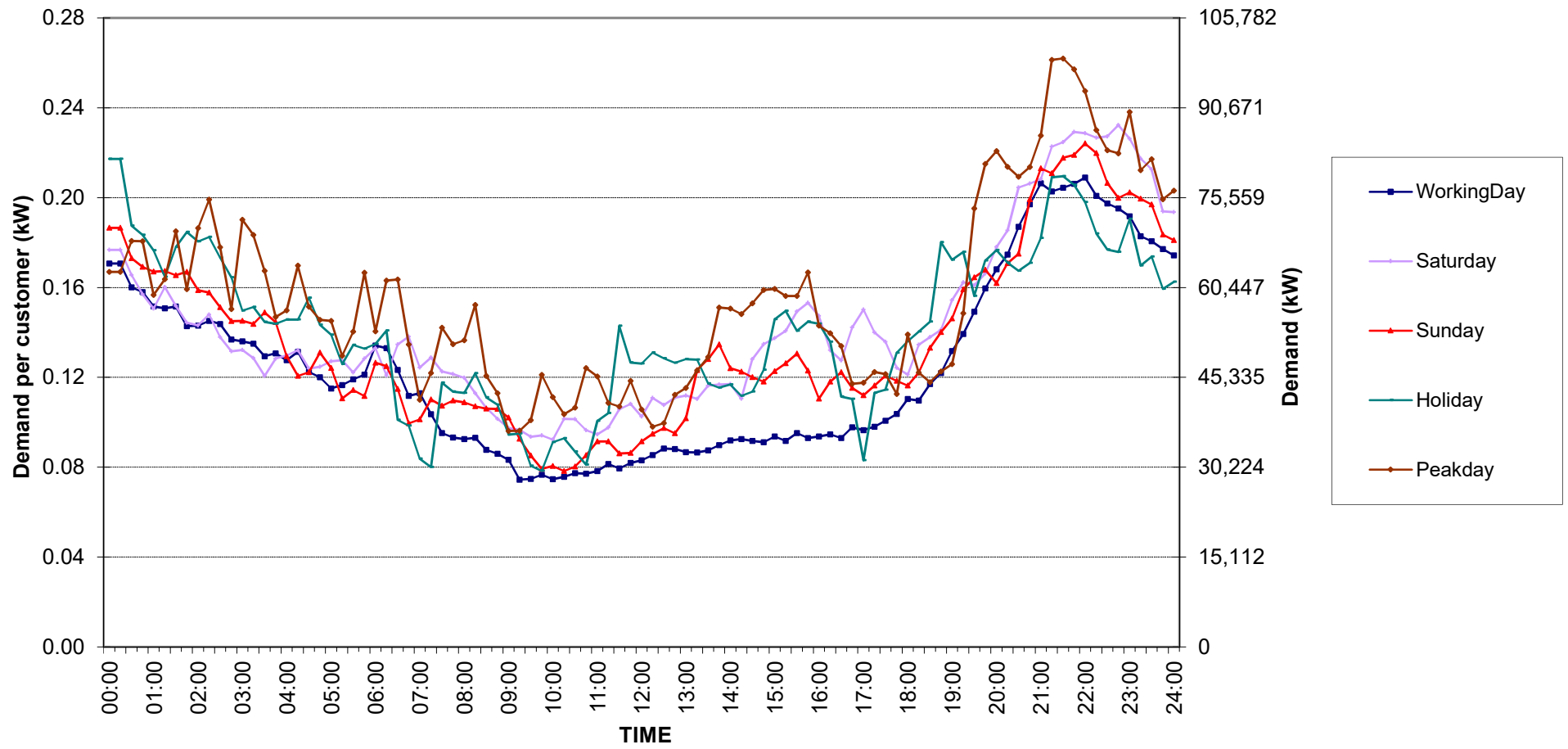
Number of sample customers on May, 2019

CLASS	Number of sample customers (Target)	Number of sample customers (Collected)
Residential	171	171
Small General Service	258	258
Medium General Service	165	165
Large General Service	284	284
Specific Business	74	74
Non-profit Organization	50	50
TOTAL	1,002	1,002

Residential (Energy Consumption less than 150 kWh per month)

Date: 1 May, 2019 to 31 May, 2019

Number of sample customers = 52

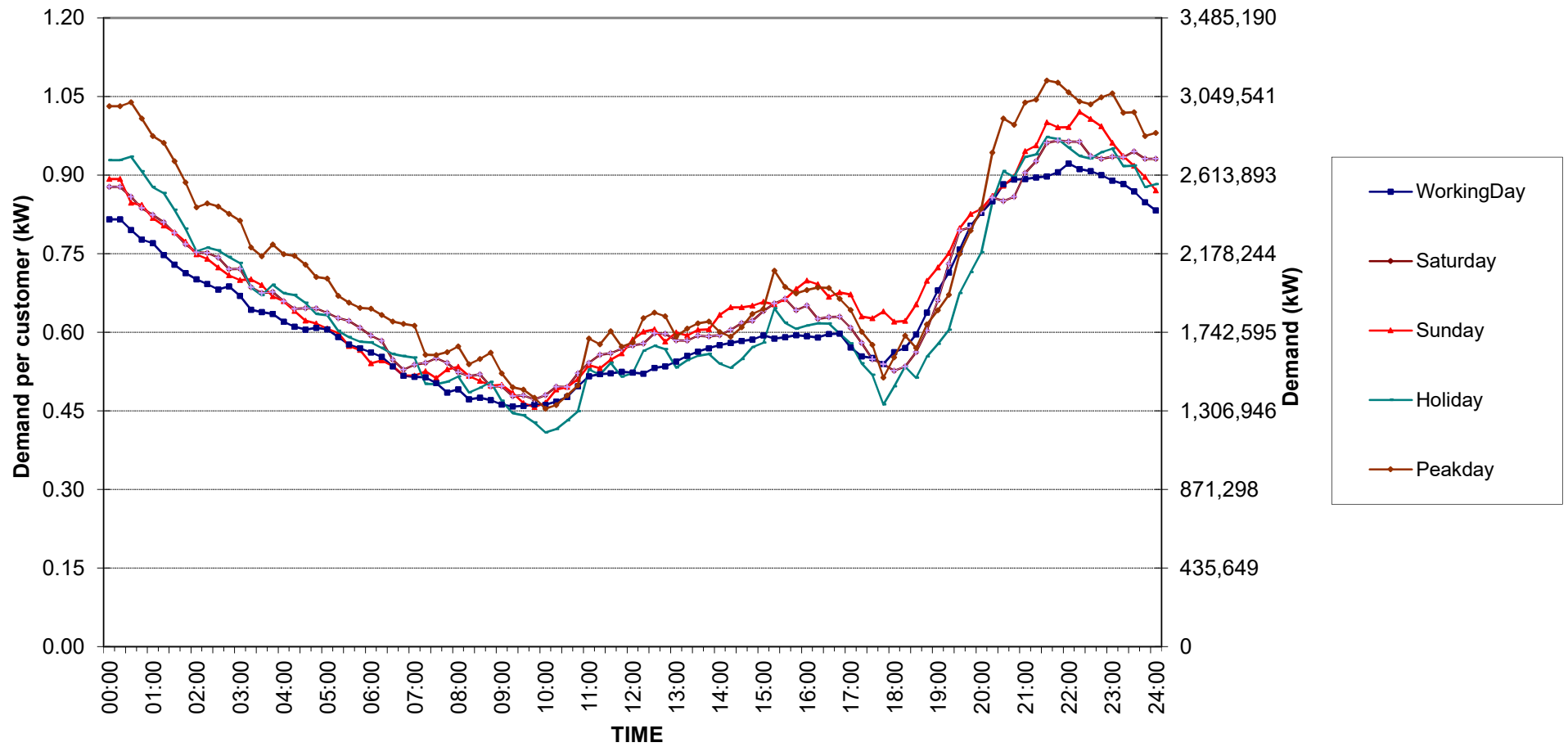


กราฟรูปที่ 1

Residential (Energy Consumption more than 150 kWh per month)

Date: 1 May, 2019 to 31 May, 2019

Number of sample customers = 119

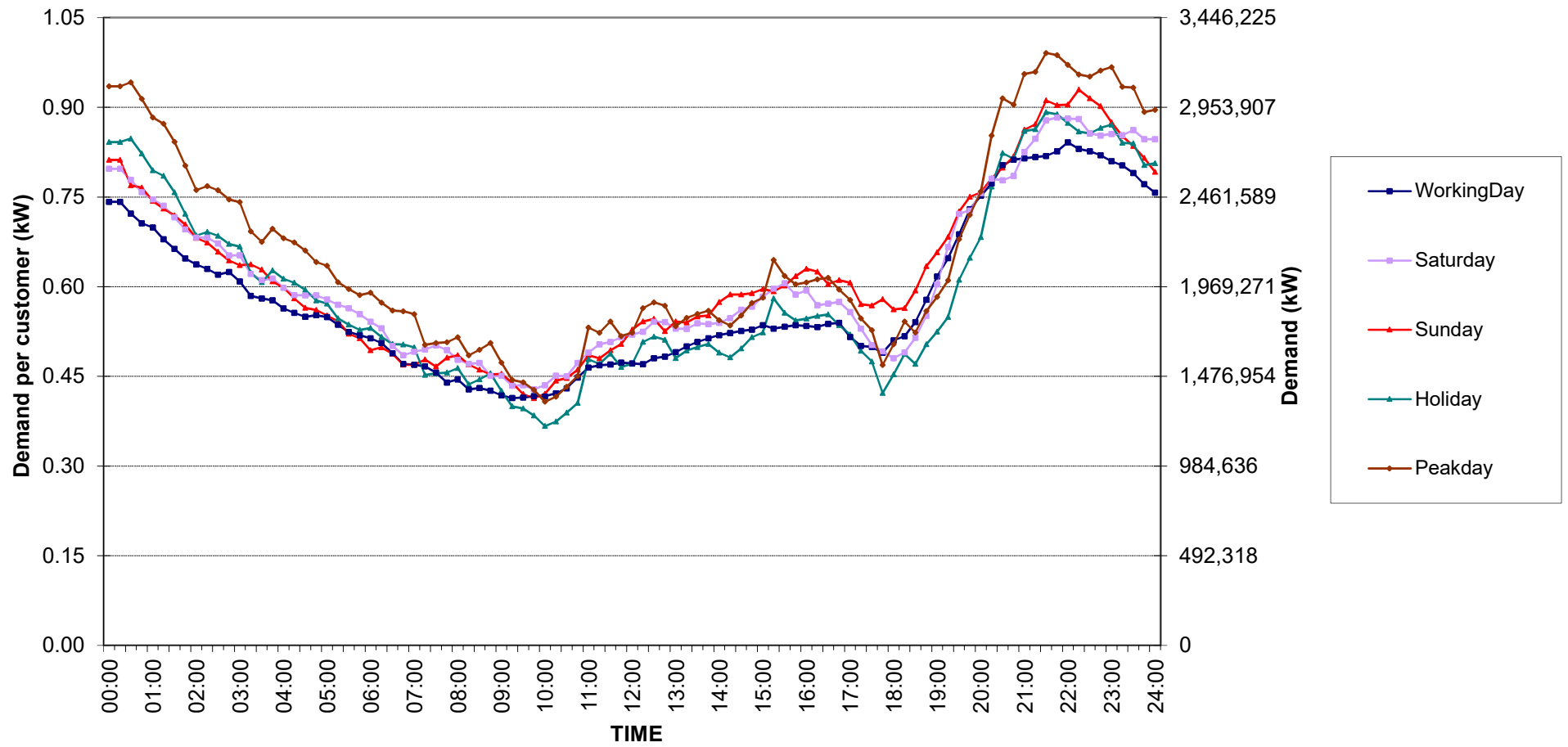


กราฟรูปที่ 2

Residential Load Profile

Date: 1 May, 2019 to 31 May, 2019

Number of sample customers = 171

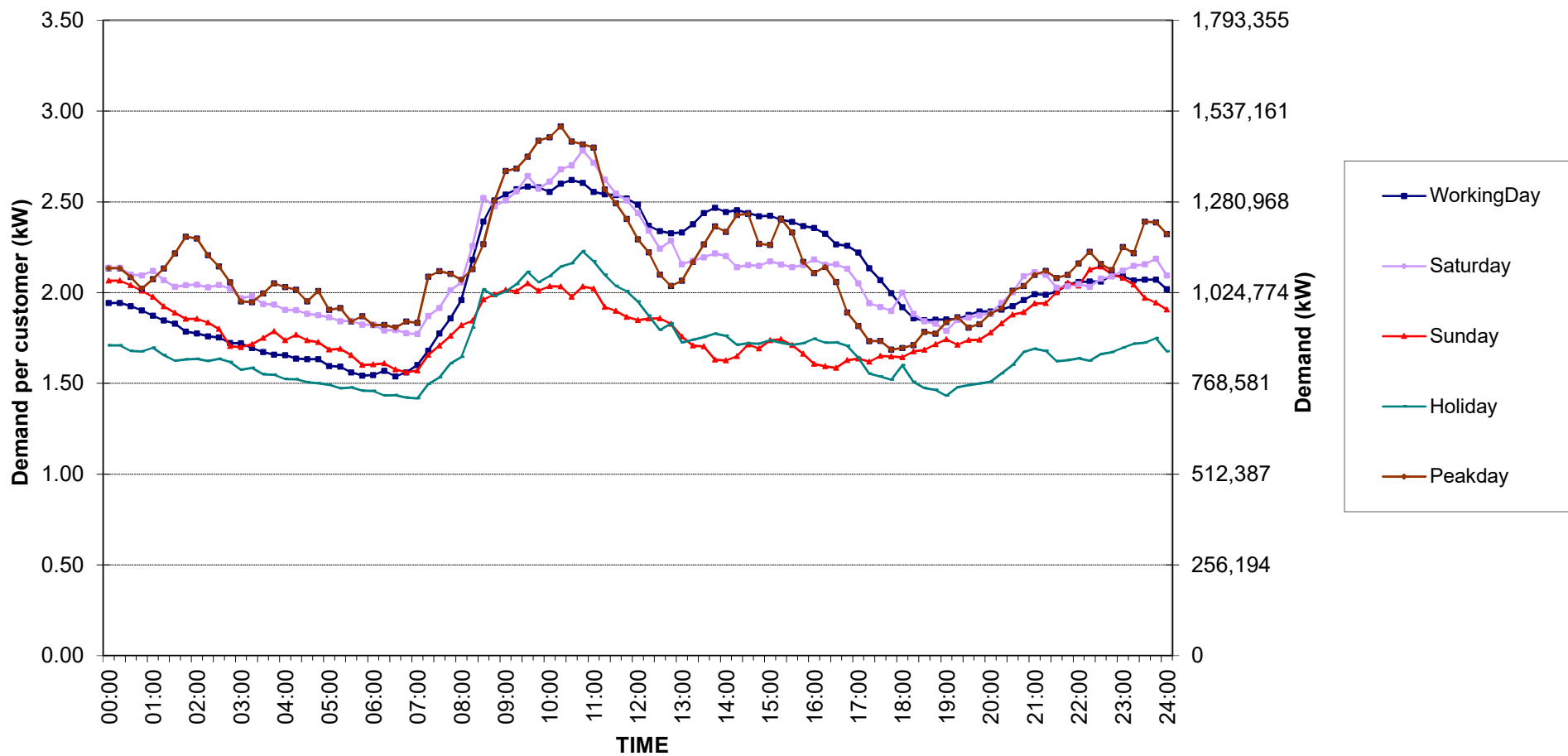


กราฟรูปที่ 3

Small General Services Load Profile

Date: 1 May, 2019 to 31 May, 2019

Number of sample customers = 258

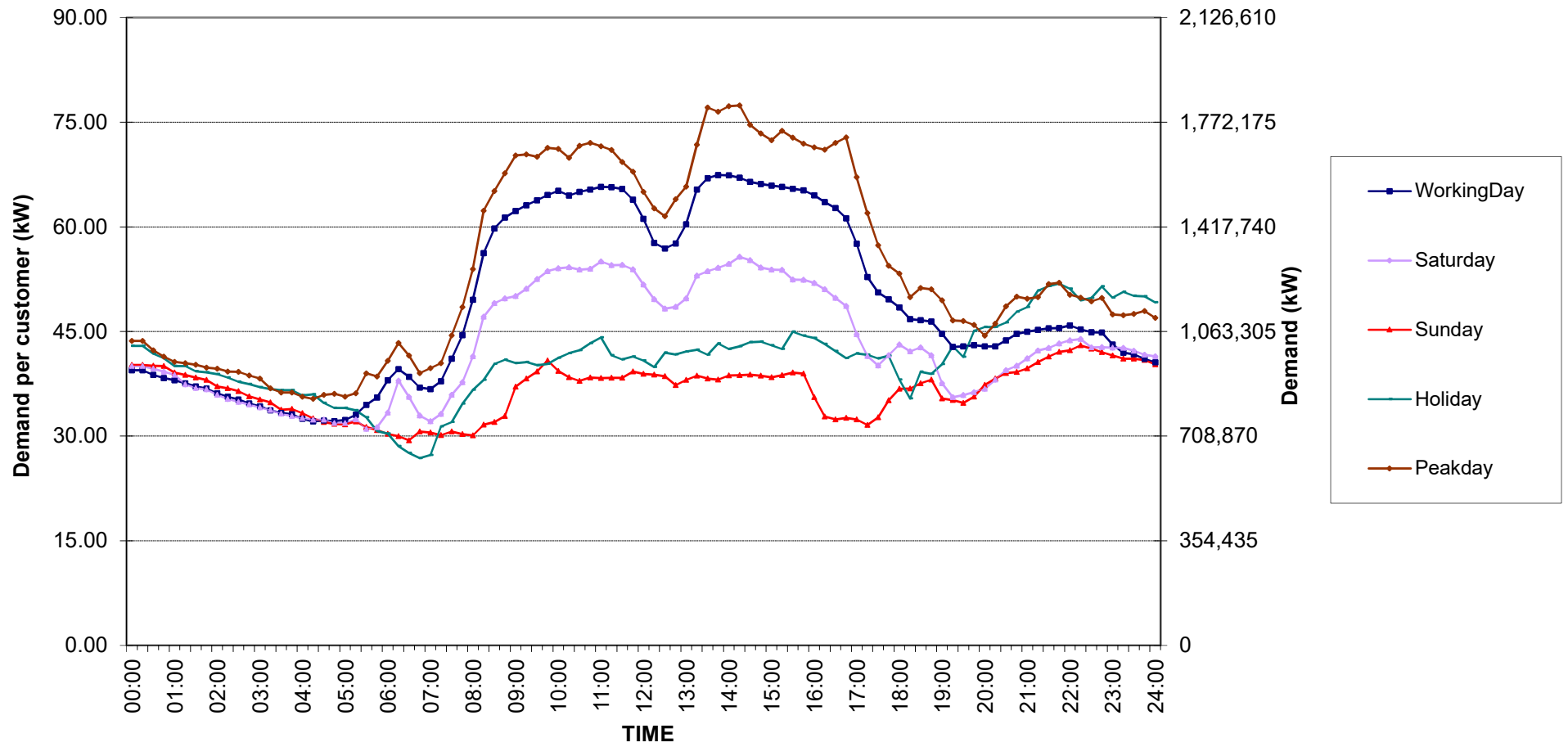


กราฟรูปที่ 4

Medium General Services Load Profile

Date: 1 May, 2019 to 31 May, 2019

Number of sample customers = 165

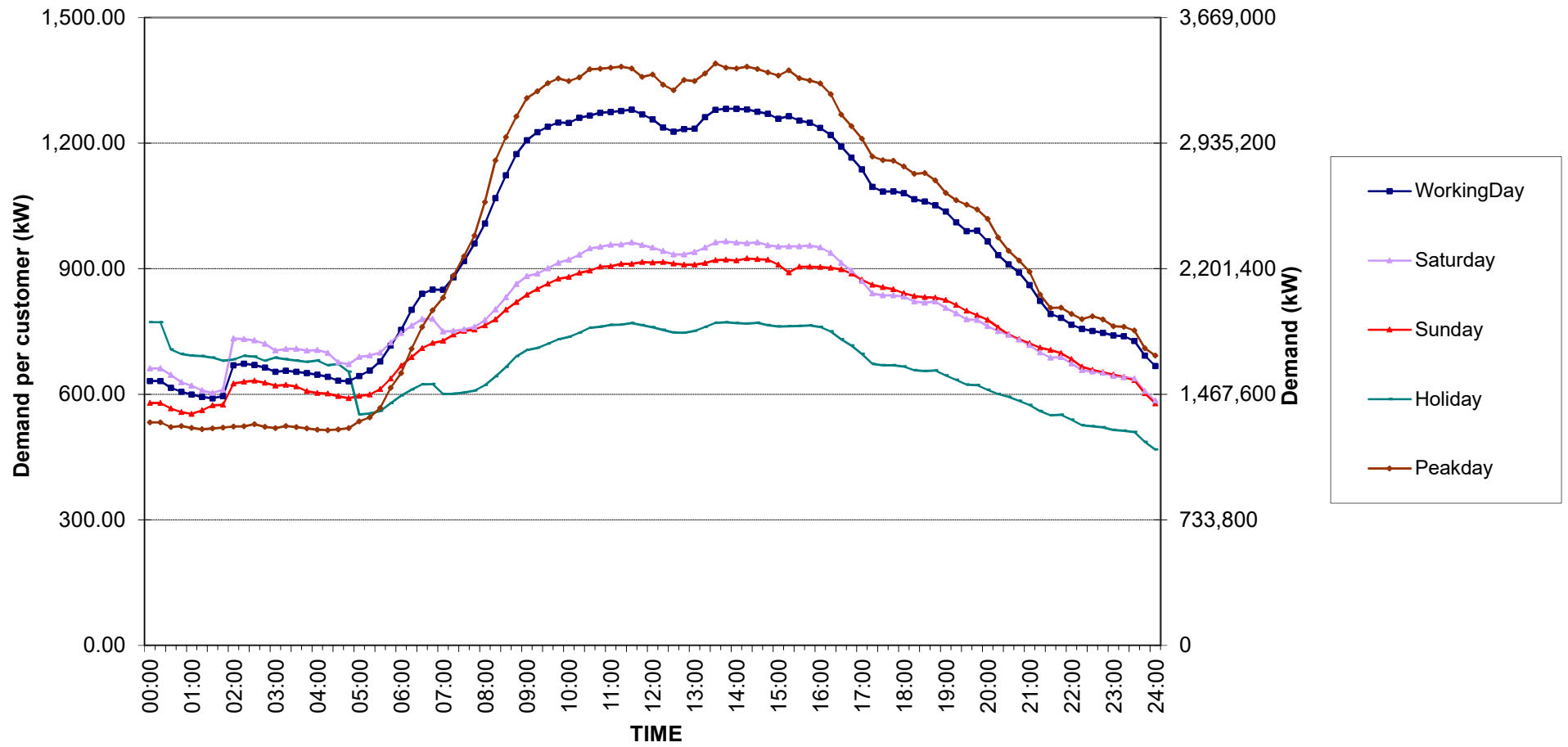


กราฟรูปที่ 5

Large General Services Load Profile

Date: 1 May, 2019 to 31 May, 2019

Number of sample customers = 284

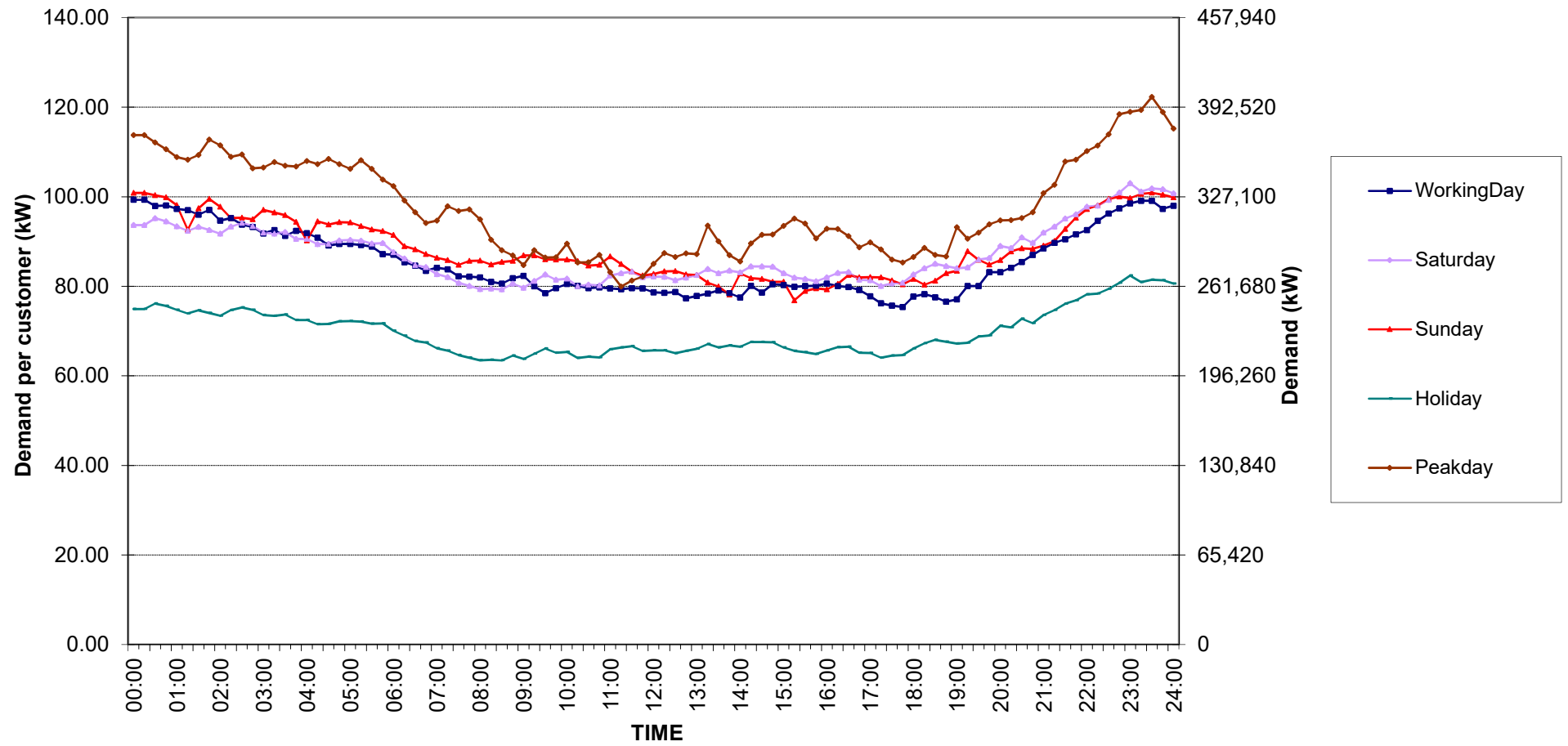


กราฟรูปที่ 6

Specific Business Load Profile

Date: 1 May, 2019 to 31 May, 2019

Number of sample customers = 74

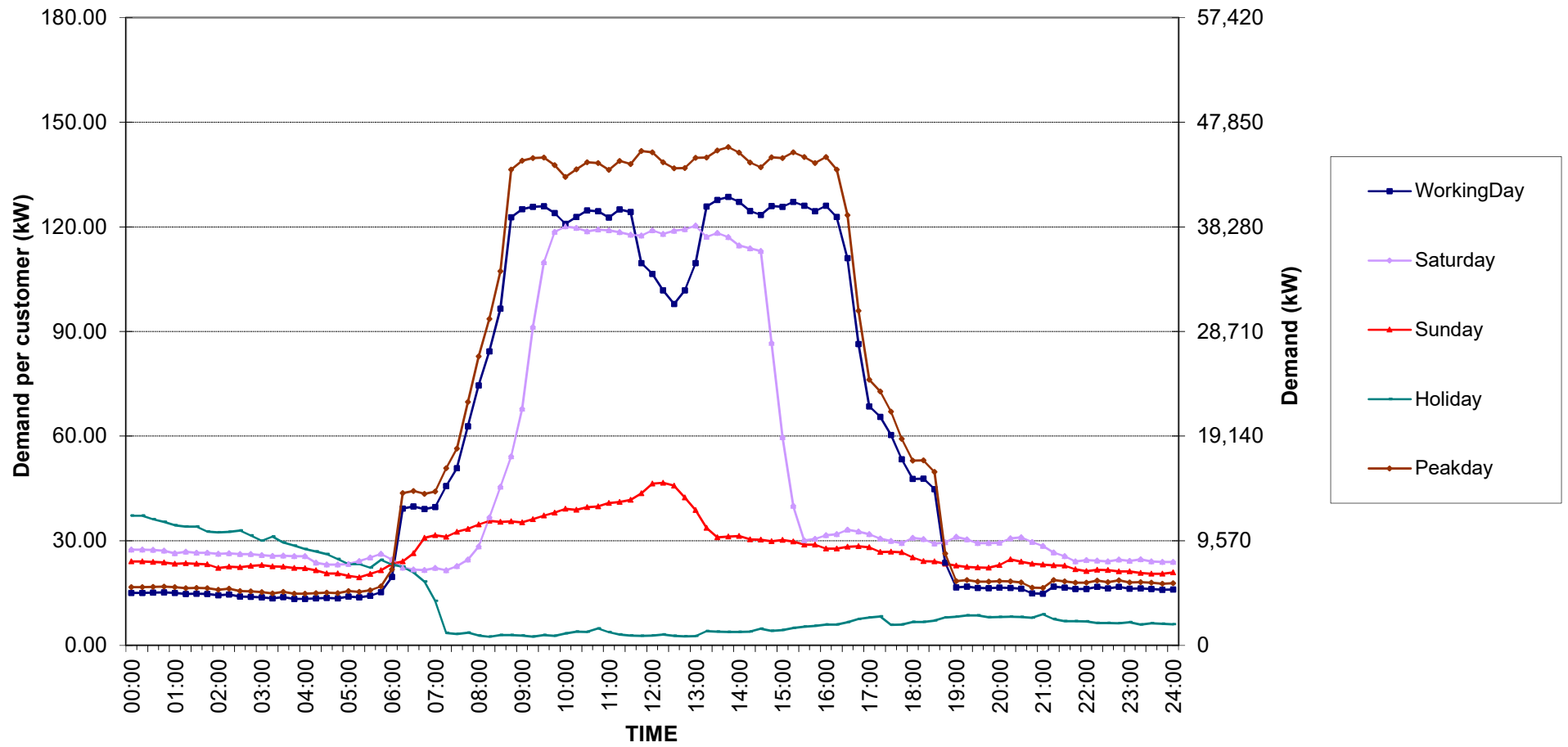


กราฟรูปที่ 7

Non-profit organizations Load Profile

Date: 1 May, 2019 to 31 May, 2019

Number of sample customers = 50

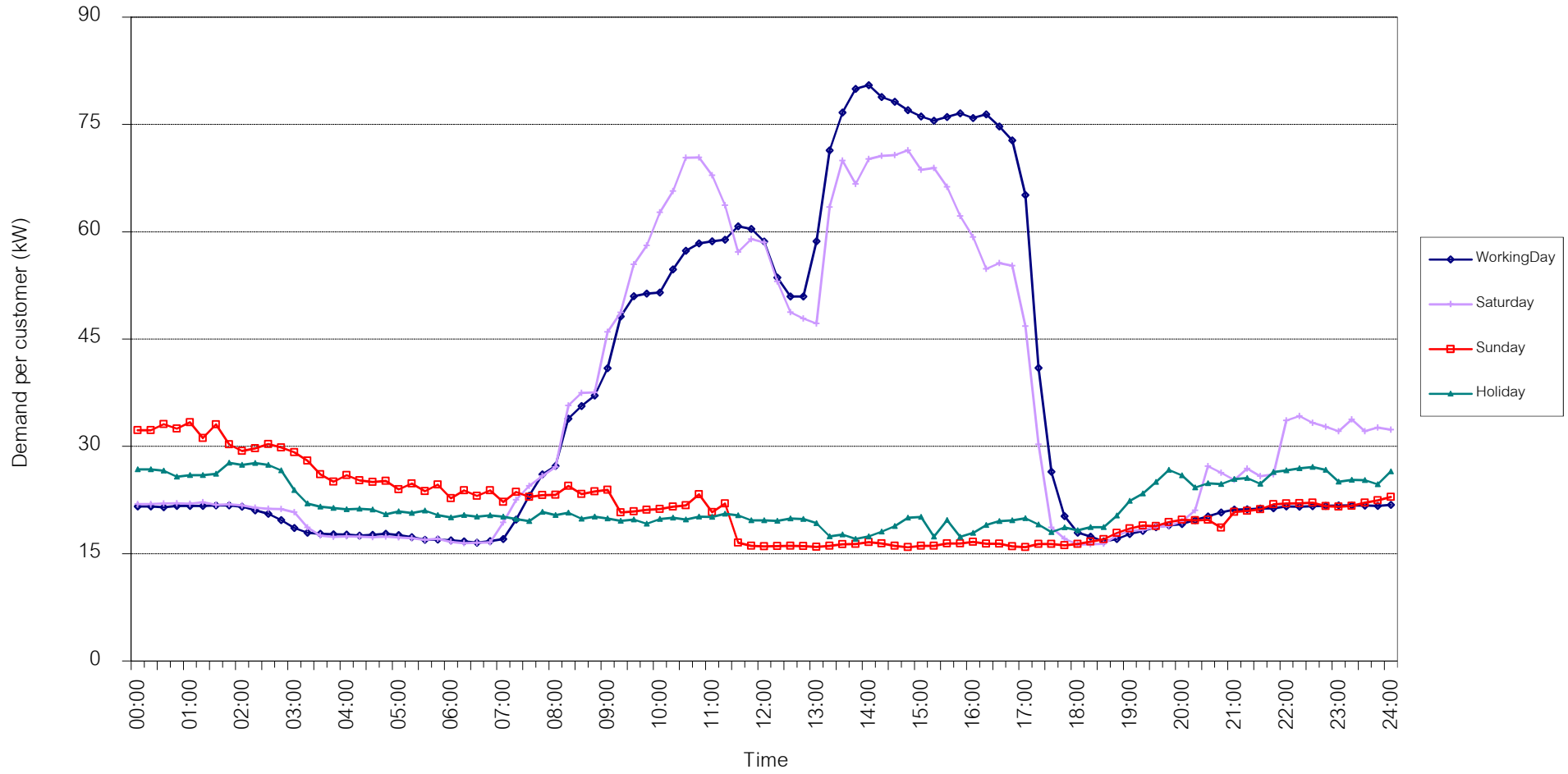


กราฟรูปที่ 8

TSIC 31 (Food Processing) Load Profile

Date: 1 May, 2019 to 31 May, 2019

Number of sample customers = 32

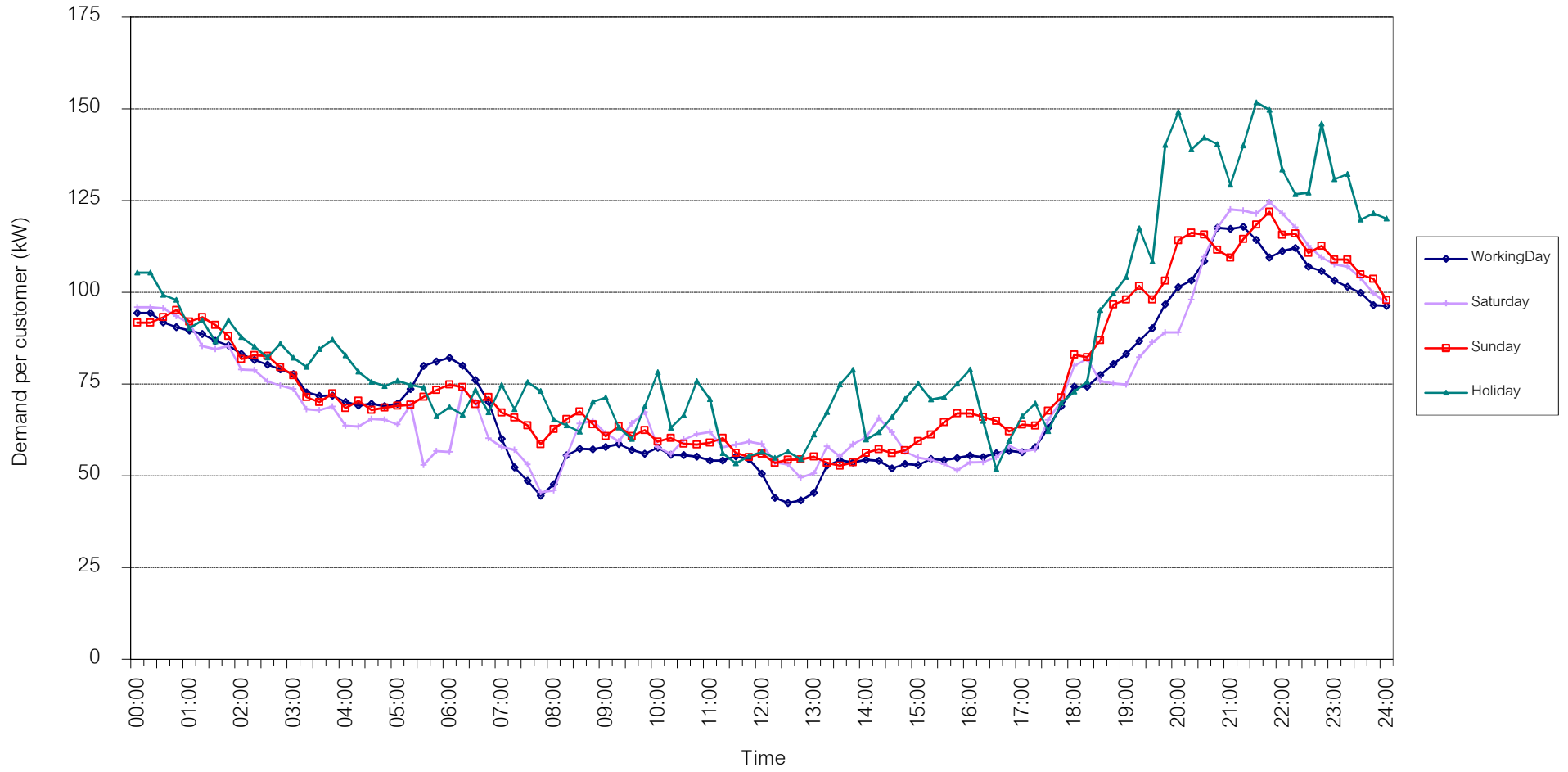


กราฟรูปที่ 9

TSIC 32 (Textiles) Load Profile

Date: 1 May, 2019 to 31 May, 2019

Number of sample customers = 67

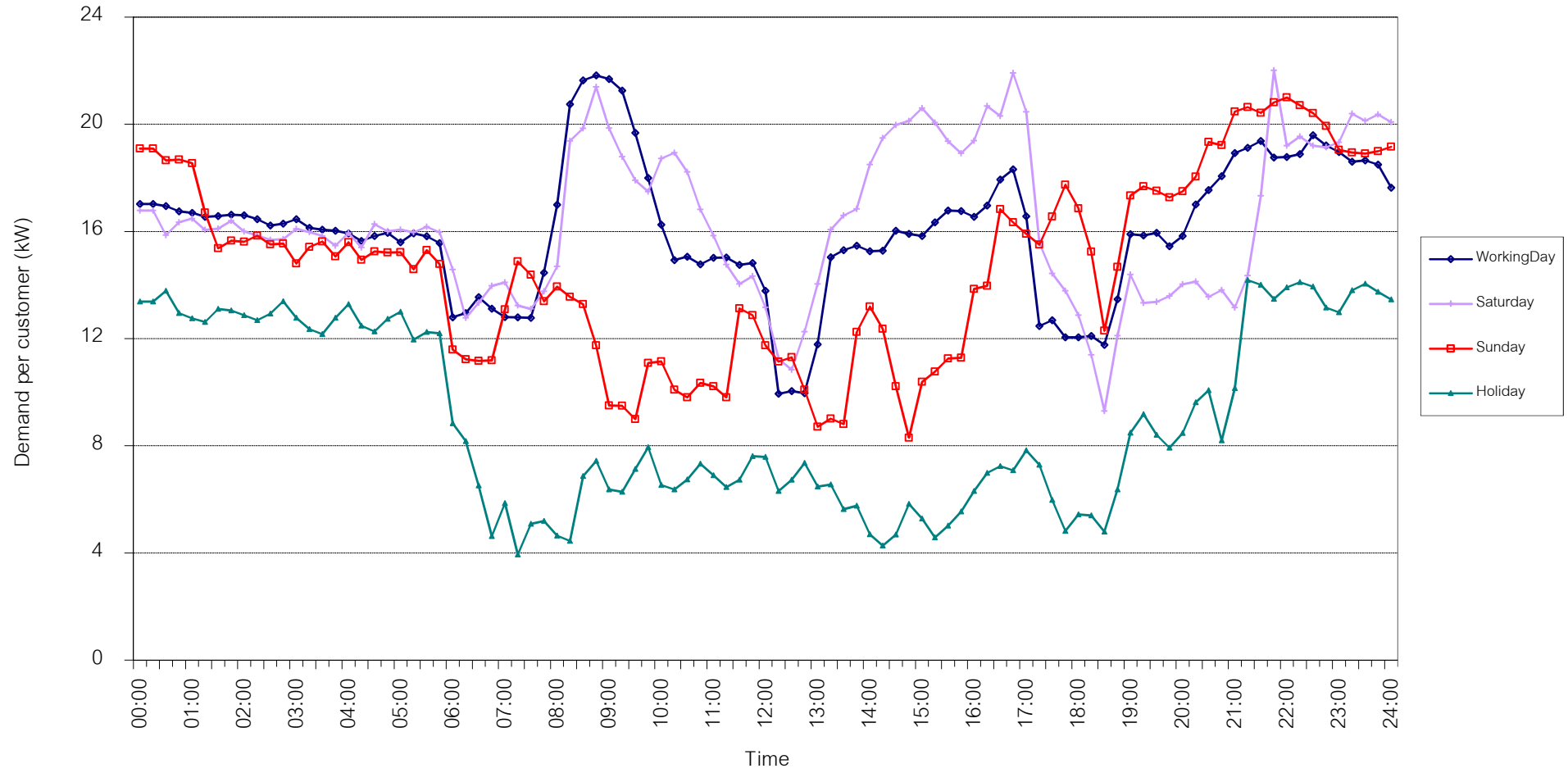


กราฟรูปที่ 10

TSIC 34 (Paper & Printing) Load Profile

Date: 1 May, 2019 to 31 May, 2019

Number of sample customers = 12

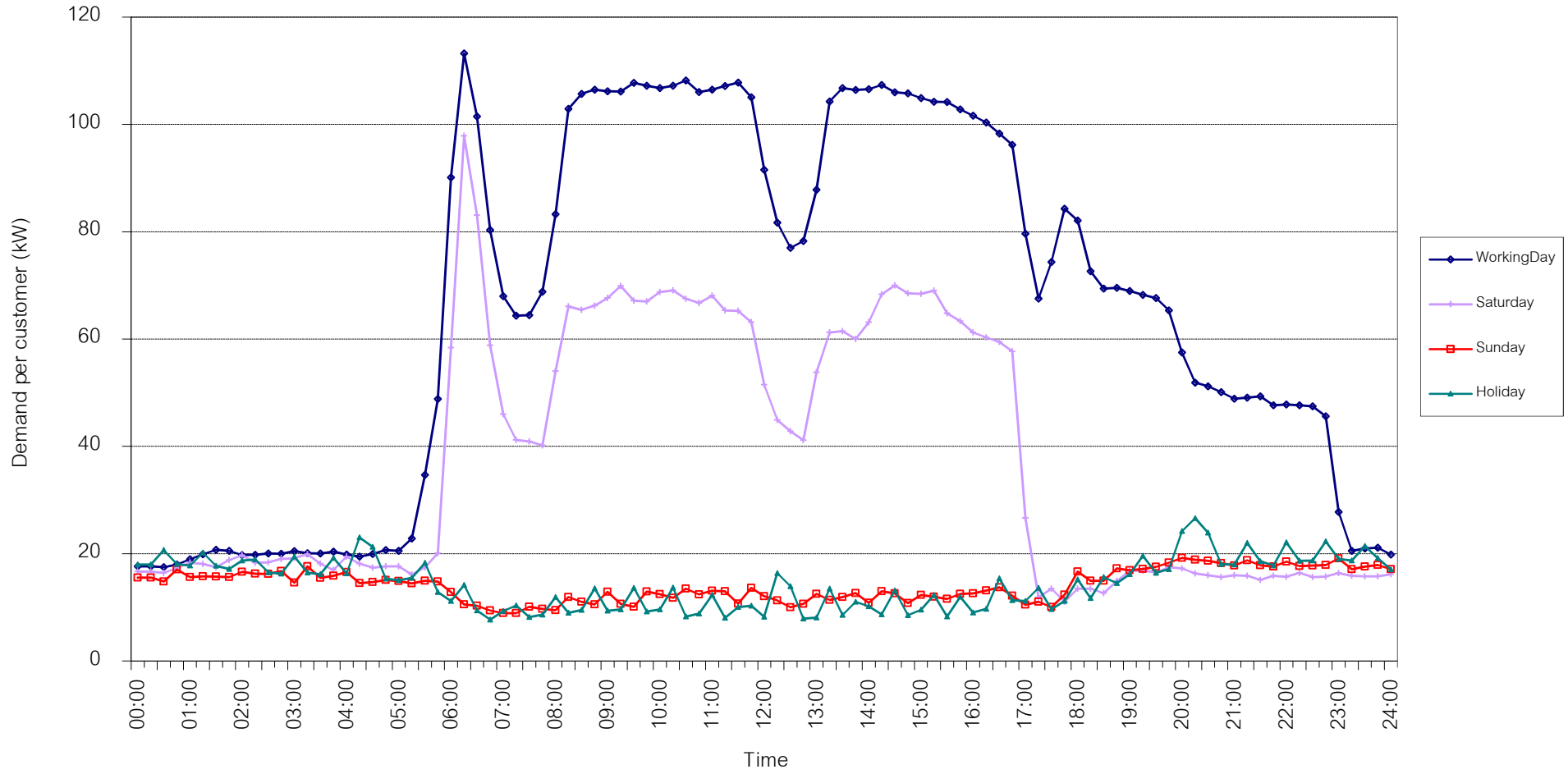


กราฟรูปที่ 11

TSIC 35 (Chemical & Petroleum) Load Profile

Date: 1 May, 2019 to 31 May, 2019

Number of sample customers = 75

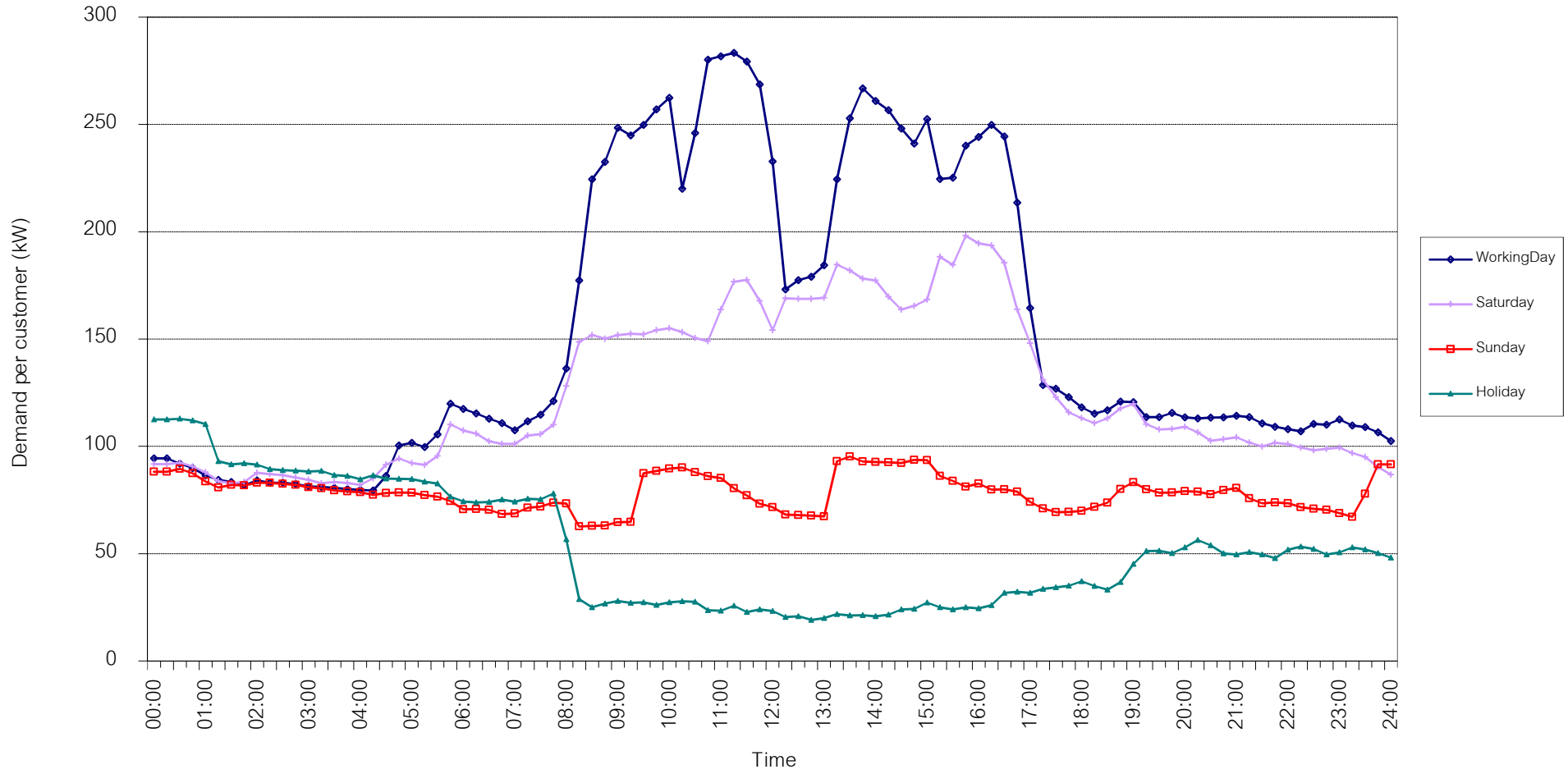


กราฟรูปที่ 12

TSIC 38 (Fabricated Metal Products) Load Profile

Date: 1 May, 2019 to 31 May, 2019

Number of sample customers = 62

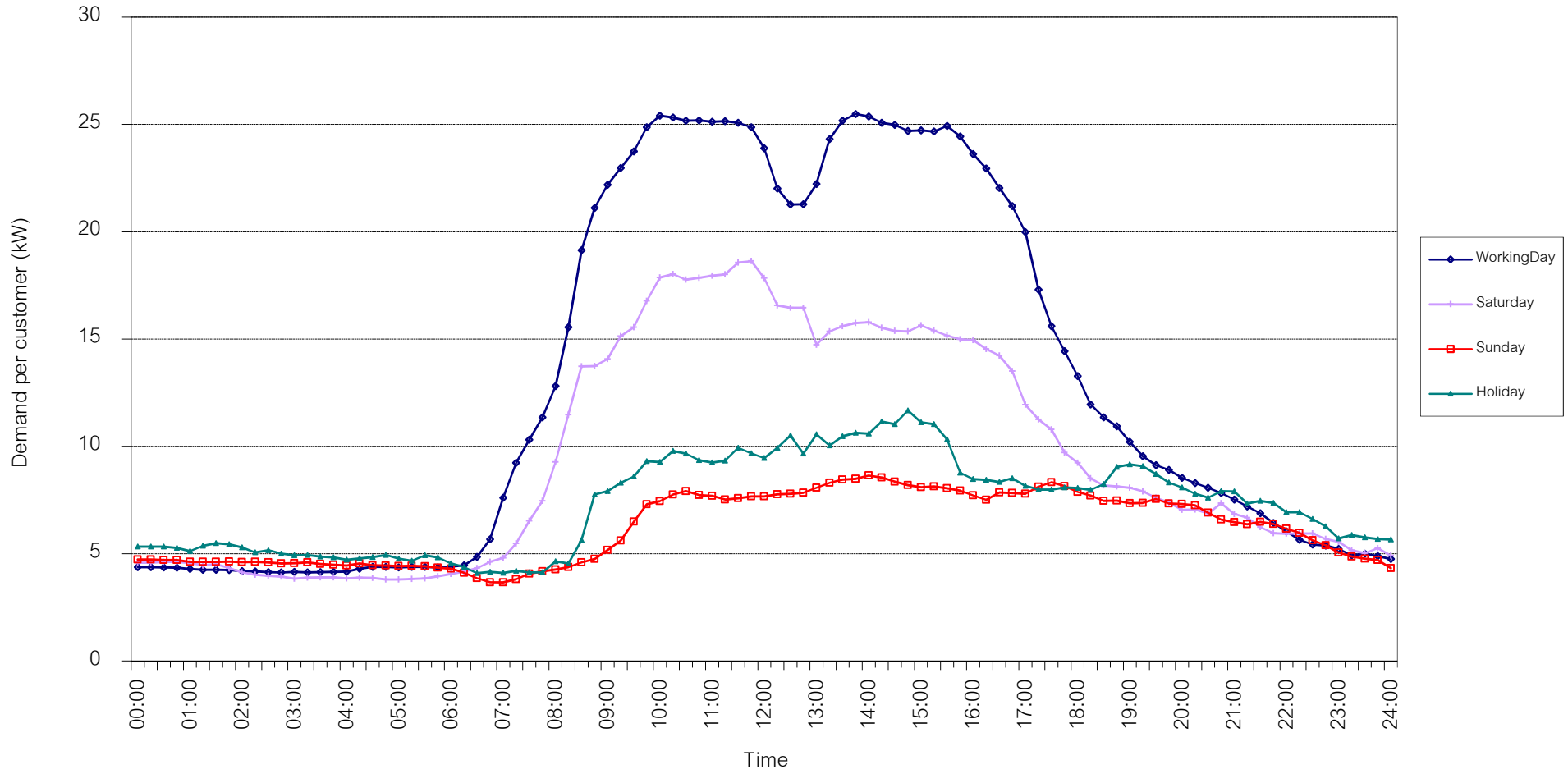


กราฟรูปที่ 13

TSIC 61 (Wholesale Trade) Load Profile

Date: 1 May, 2019 to 31 May, 2019

Number of sample customers = 48

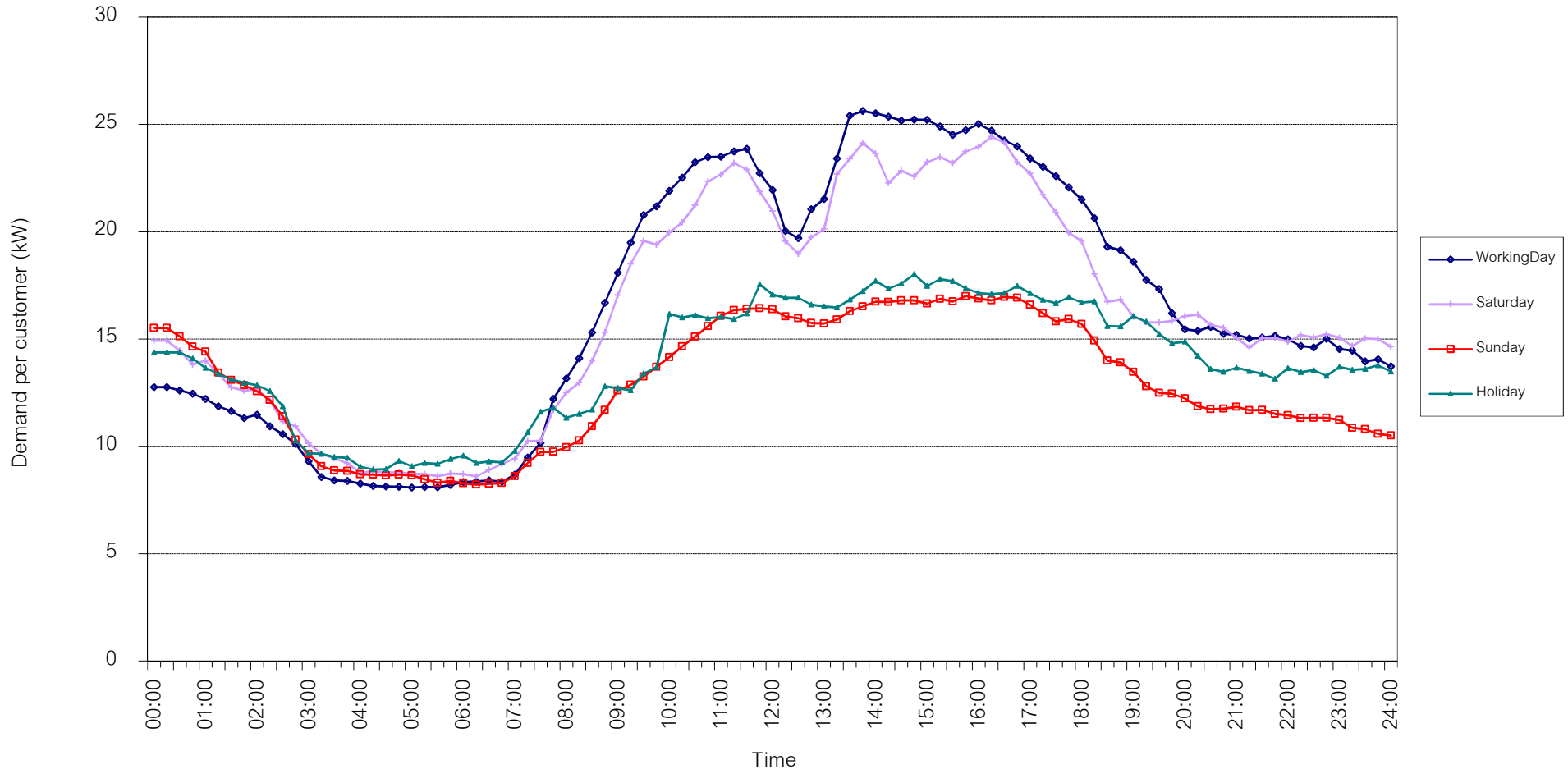


กราฟรูปที่ 14

TSIC 62 (Retail Trade) Load Profile

Date: 1 May, 2019 to 31 May, 2019

Number of sample customers = 93



กราฟรูปที่ 15

TSIC 63 (Hotels and restaurants) Load Profile

Date: 1 May, 2019 to 31 May, 2019

Number of sample customers = 117

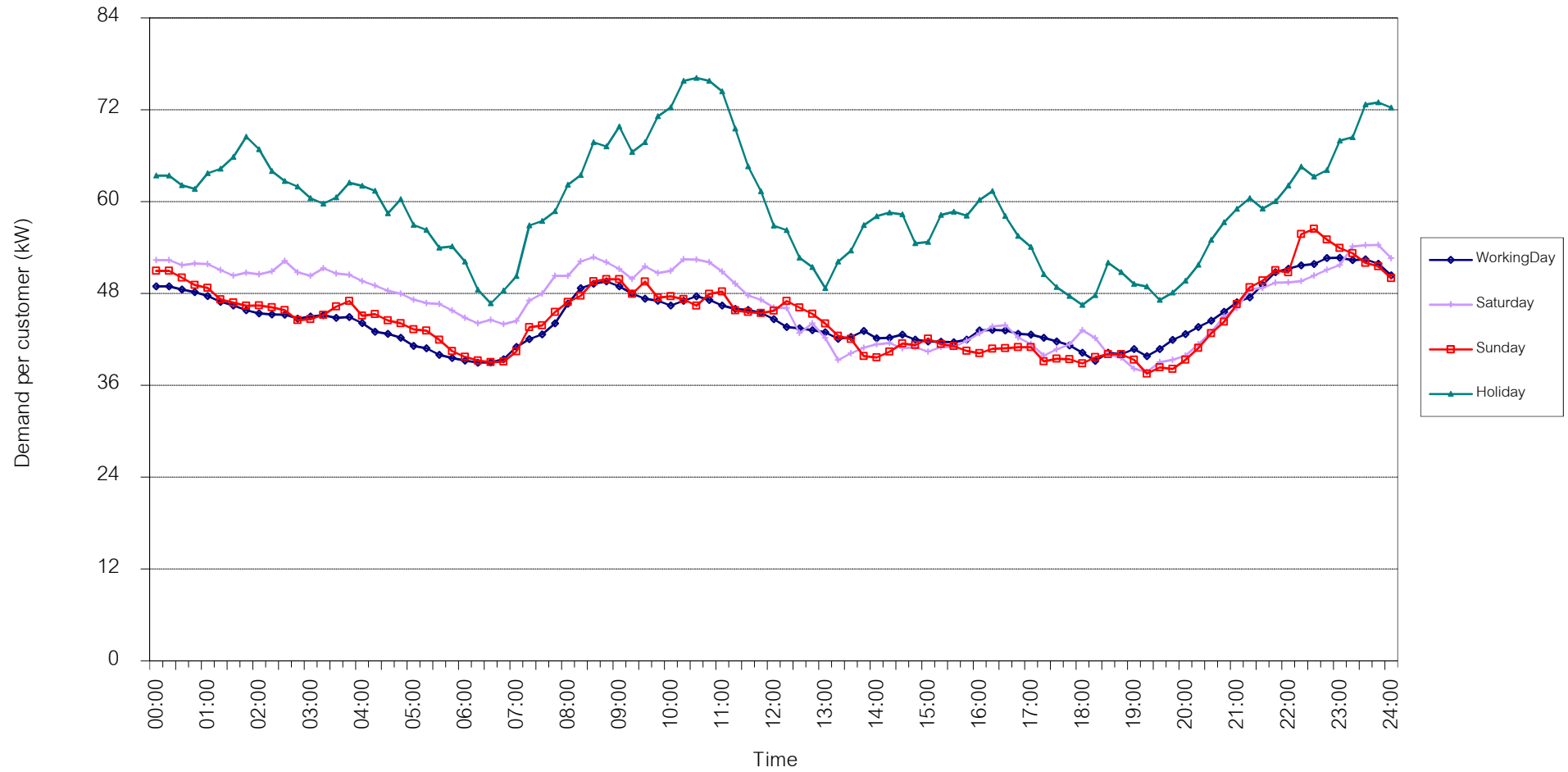


กราฟรูปที่ 16

TSIC 83 (Real Estate) Load Profile

Date: 1 May, 2019 to 31 May, 2019

Number of sample customers = 47

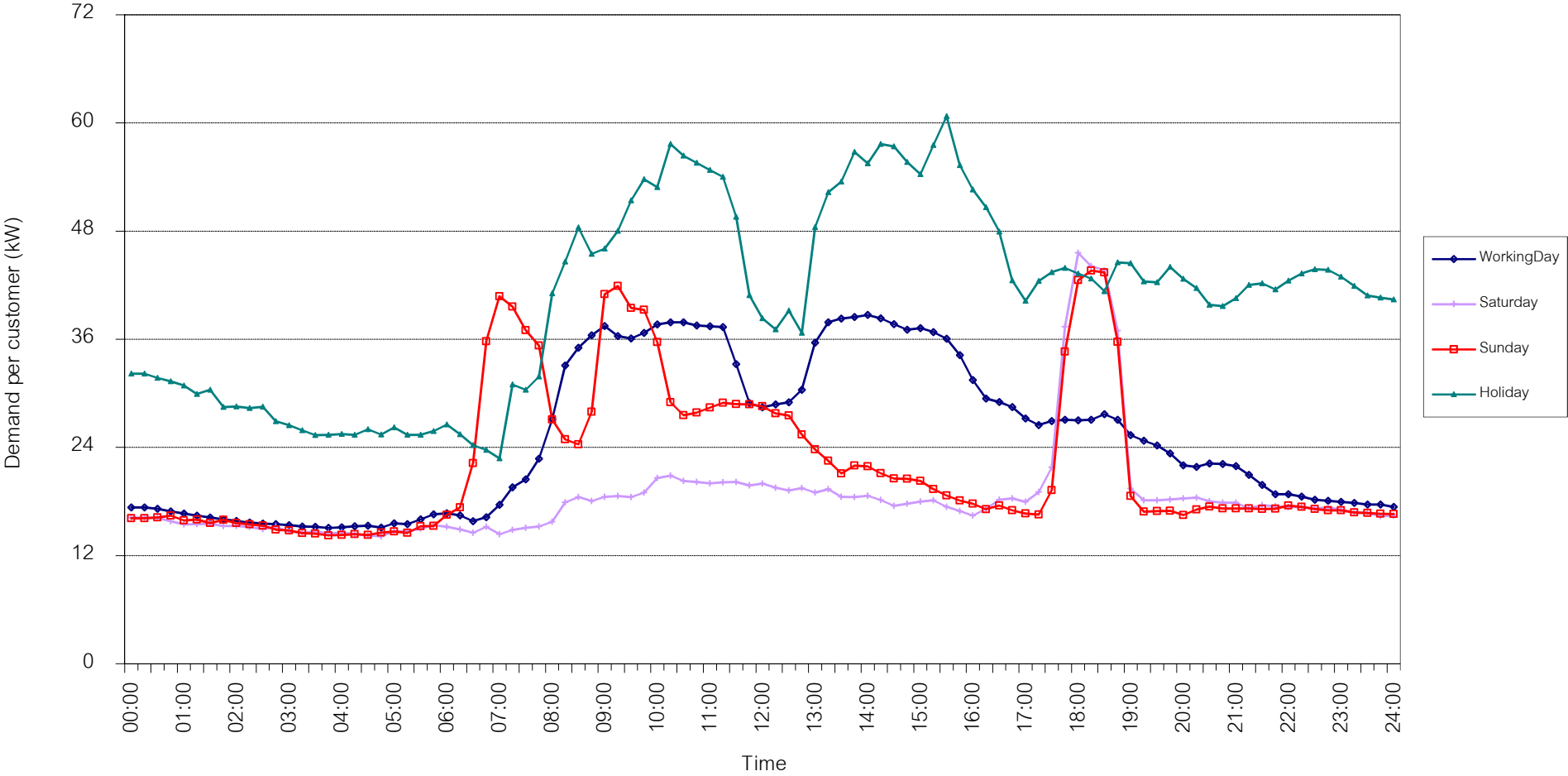


กราฟรูปที่ 17

TSIC 93 (Social Services) Load Profile

Date: 1 May, 2019 to 31 May, 2019

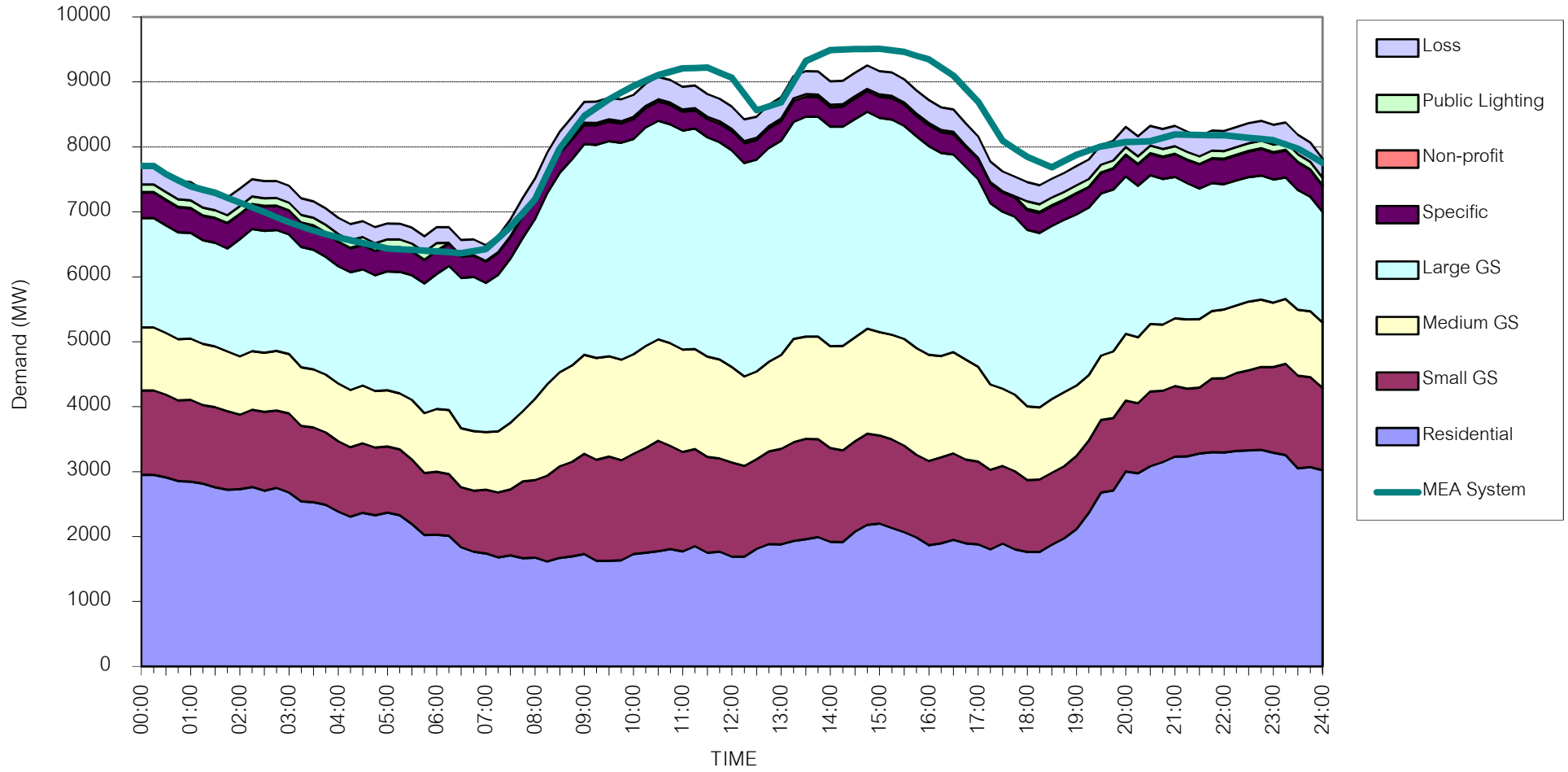
Number of sample customers = 27



กราฟรูปที่ 18

MEA's System Load Profile

Peak Day 3 May, 2019 at 15:00



กราฟรูปที่ 19