

**ข้อมูลการศึกษาลักษณะการใช้ไฟฟ้า**

**เดือน มิถุนายน 2550**

Table 1-1

COINCIDENT WITH SYSTEM LOAD RESEARCH SYSTEM'S PEAK ON June 15,2007 time 14:30 6,953.74 MW  
 ( MEA SYSTEM'S PEAK ON June 15,2007 time 14:15 7,406.24 MW )

CLASS	Number of Customers	Kilowatt hours	Coincident Peak (MEA System Peak at time14:30)		Coincident Peak (Load Research System Peak at time 10:15)		Sector Diversified Demand		
			MW	Contribution (%)	MW	Contribution (%)	Max MW.	Date	Time
Residential	2,154,214	873,034,404	859.70	12.44	867.48	12.48	2,282.28	11 Jun 07	22:30
Small General Service	468,134	559,951,420	966.21	13.98	1,011.14	14.54	1,194.32	1 Jun 07	10:30
Medium General Service	19,948	707,020,681	1,644.74	23.80	1,620.85	23.31	1,715.29	11 Jun 07	15:00
Large General Service	1,589	1,338,705,499	2,490.82	36.05	2,497.37	35.91	2,536.83	14 Jun 07	14:30
Specific Business	2,175	156,413,704	298.83	4.32	298.14	4.29	305.26	14 Jun 07	13:30
Government and non Profit organization	10,486	117,916,455	417.04	6.04	426.88	6.14	564.29	4 Jun 07	09:45
Public Lighting	-	18,233,162	0.00	0.00	0.00	0.00	50.68	-	-
Loss	-	122,158,868	232.51	3.36	231.89	3.33	232.51	15 Jun 07	14:15
TOTAL	2,656,546	3,893,434,193	6,909.86	100	6,953.74	100	6,954	15 Jun 07	14:30

Table 1-2

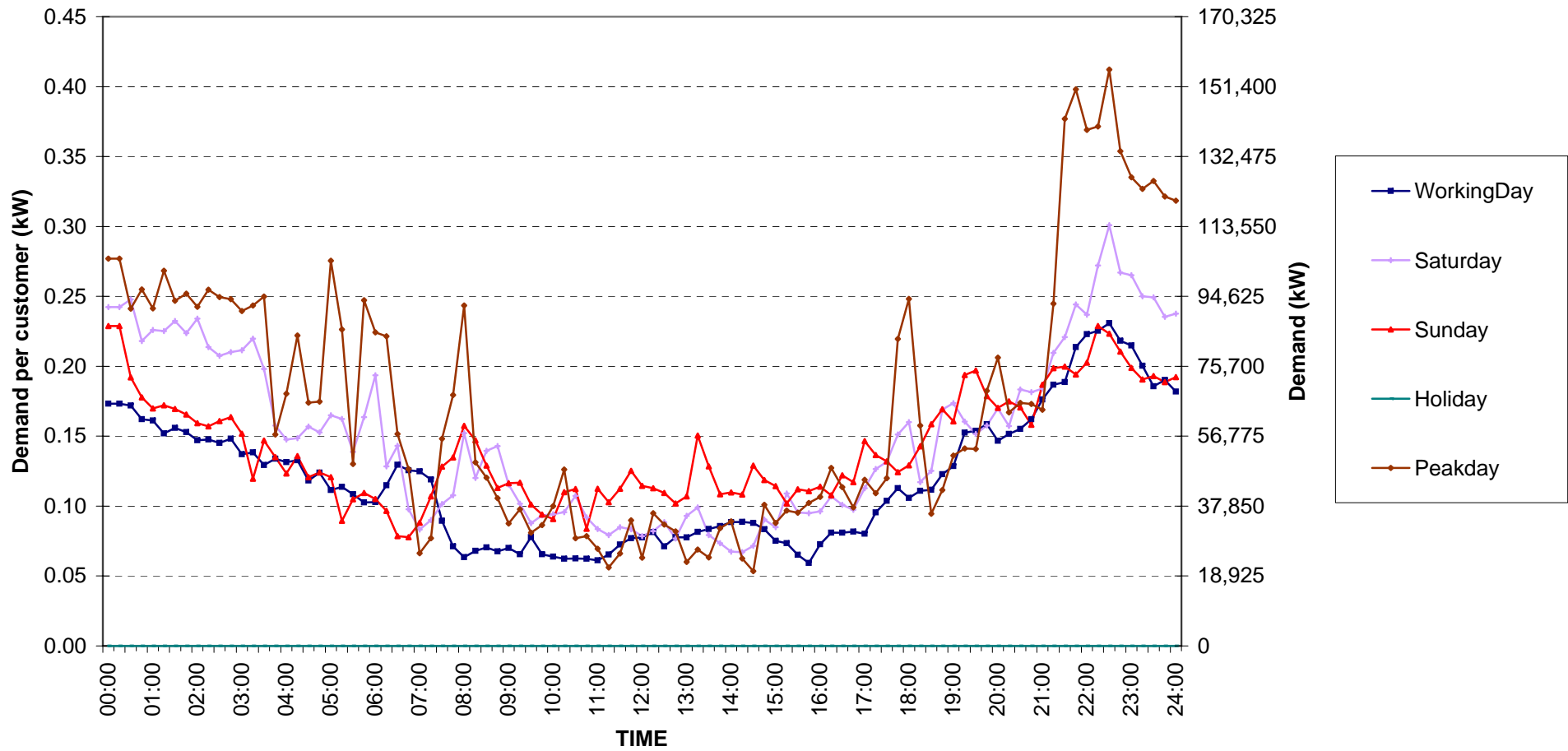
Number of sample customers on June, 2007

CLASS	Number of sample customers (Target)	Number of sample customers (Collected)
Residential	191	191
Small General Service	297	297
Medium General Service	163	163
Large General Service	328	328
Specific Business	76	76
Government and Non-profit Organization	68	68
TOTAL	1,123	1,123

Residential ( Energy Consumption less than 150 kWh per month )

Date: 1 Jun, 2007 to 30 Jun, 2007

Number of sample customers = 10

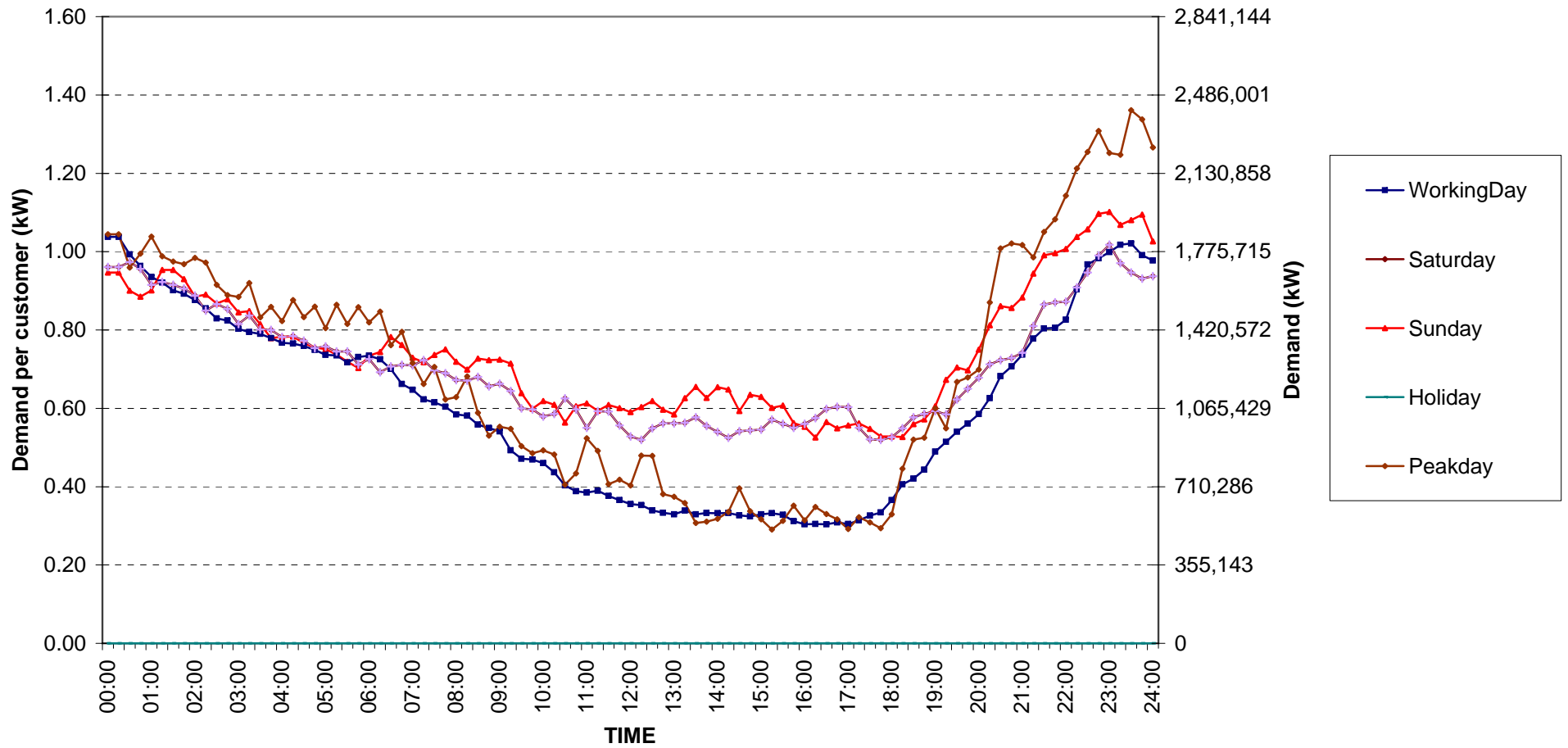


กราฟรูปที่ 1

Residential ( Energy Consumption more than 150 kWh per month )

Date: 1 Jun, 2007 to 30 Jun, 2007

Number of sample customers = 181

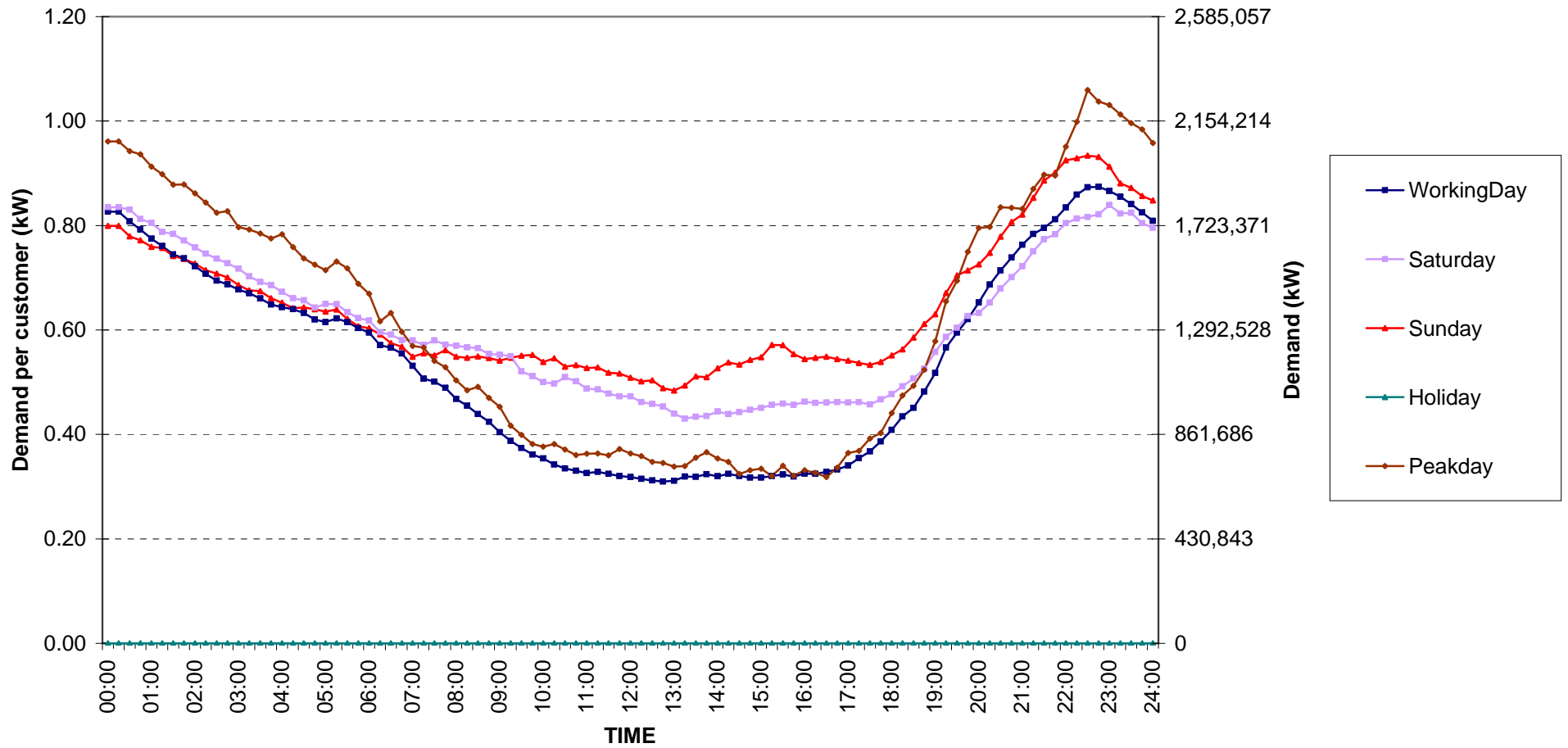


กราฟรูปที่ 2

# Residential Load Profile

Date: 1 Jun, 2007 to 30 Jun, 2007

Number of sample customers = 191

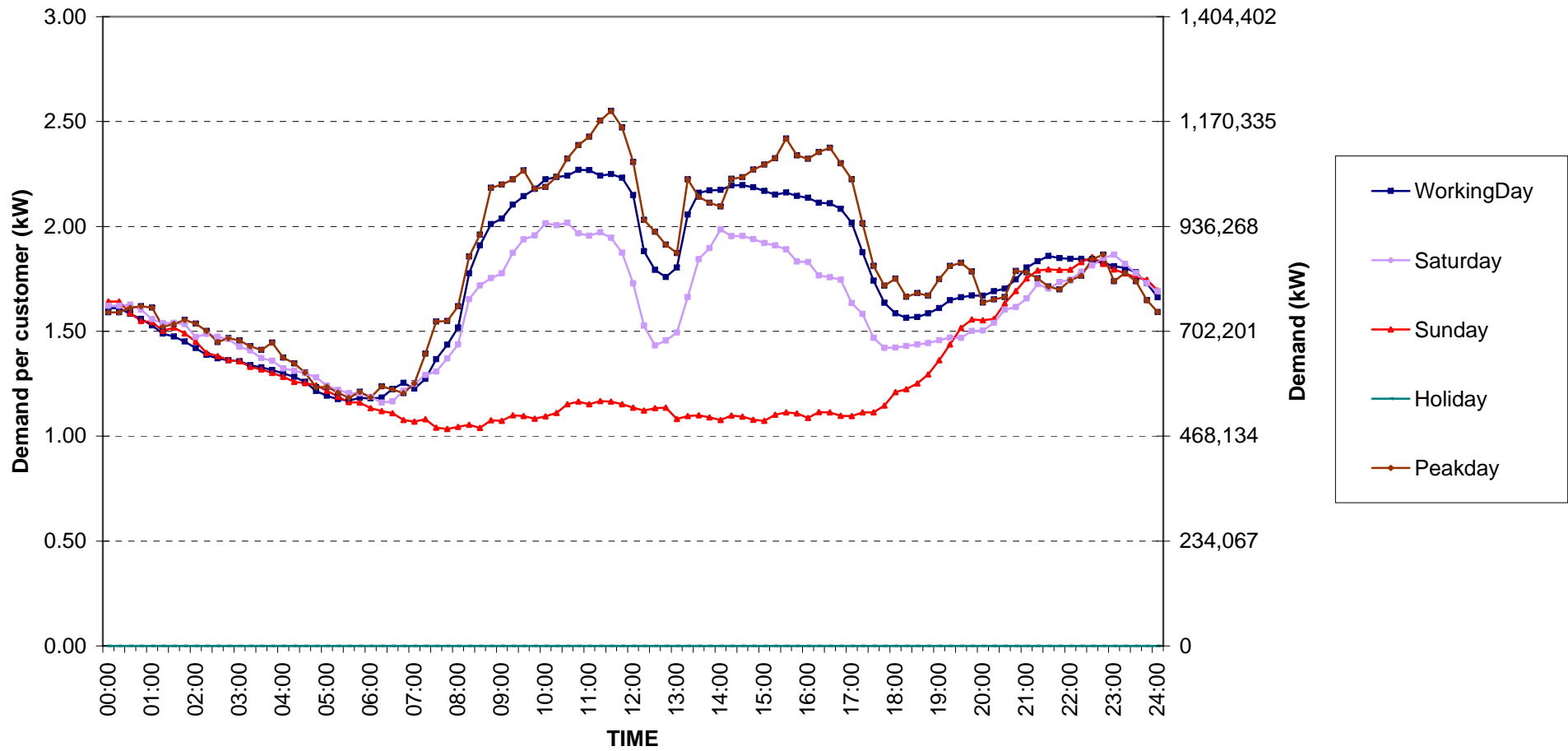


กราฟรูปที่ 3

### Small General Services Load Profile

Date: 1 Jun, 2007 to 30 Jun, 2007

Number of sample customers = 297

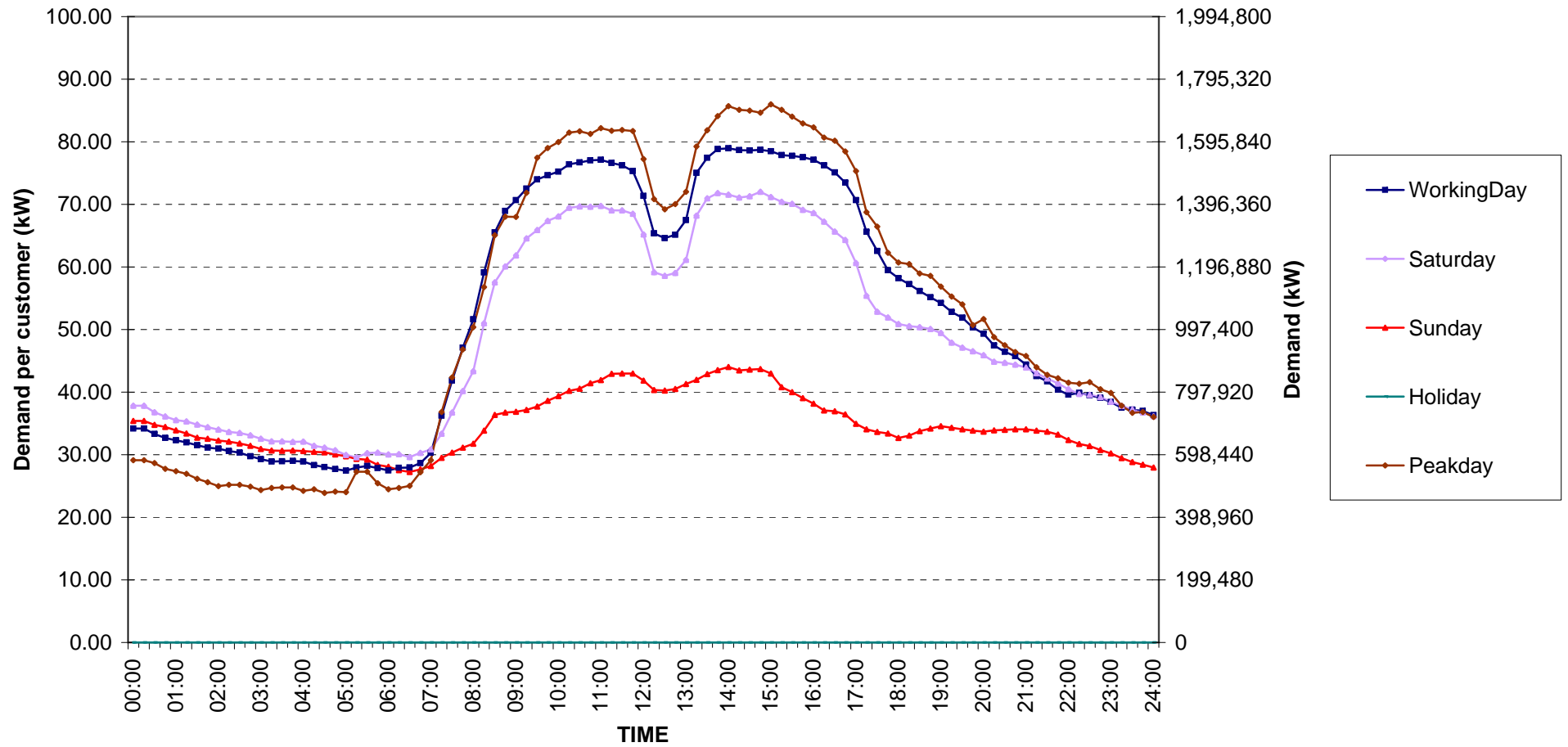


กราฟรูปที่ 4

### Medium General Services Load Profile

Date: 1 Jun, 2007 to 30 Jun, 2007

Number of sample customers = 163

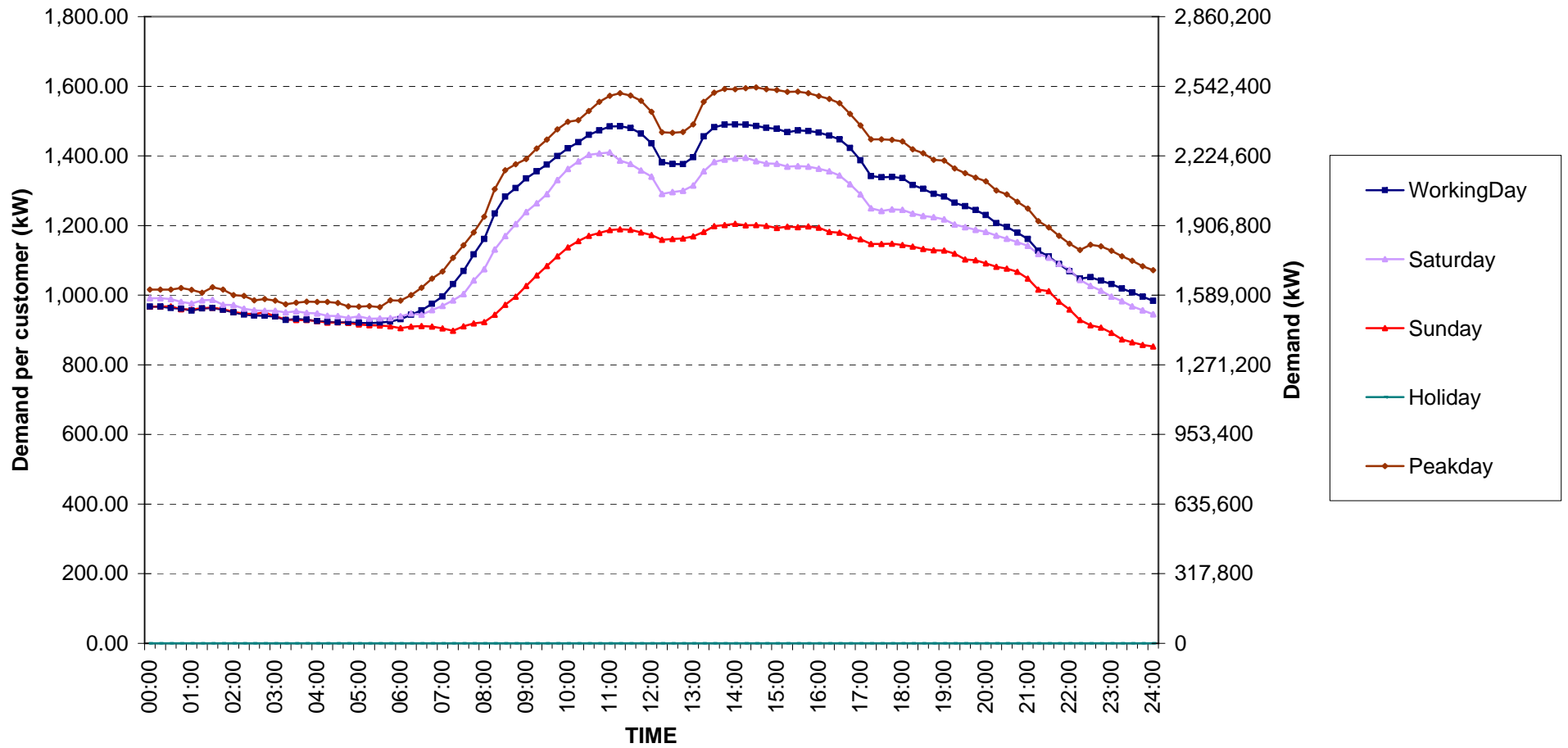


กราฟรูปที่ 5

# Large General Services Load Profile

Date: 1 Jun, 2007 to 30 Jun, 2007

Number of sample customers = 328

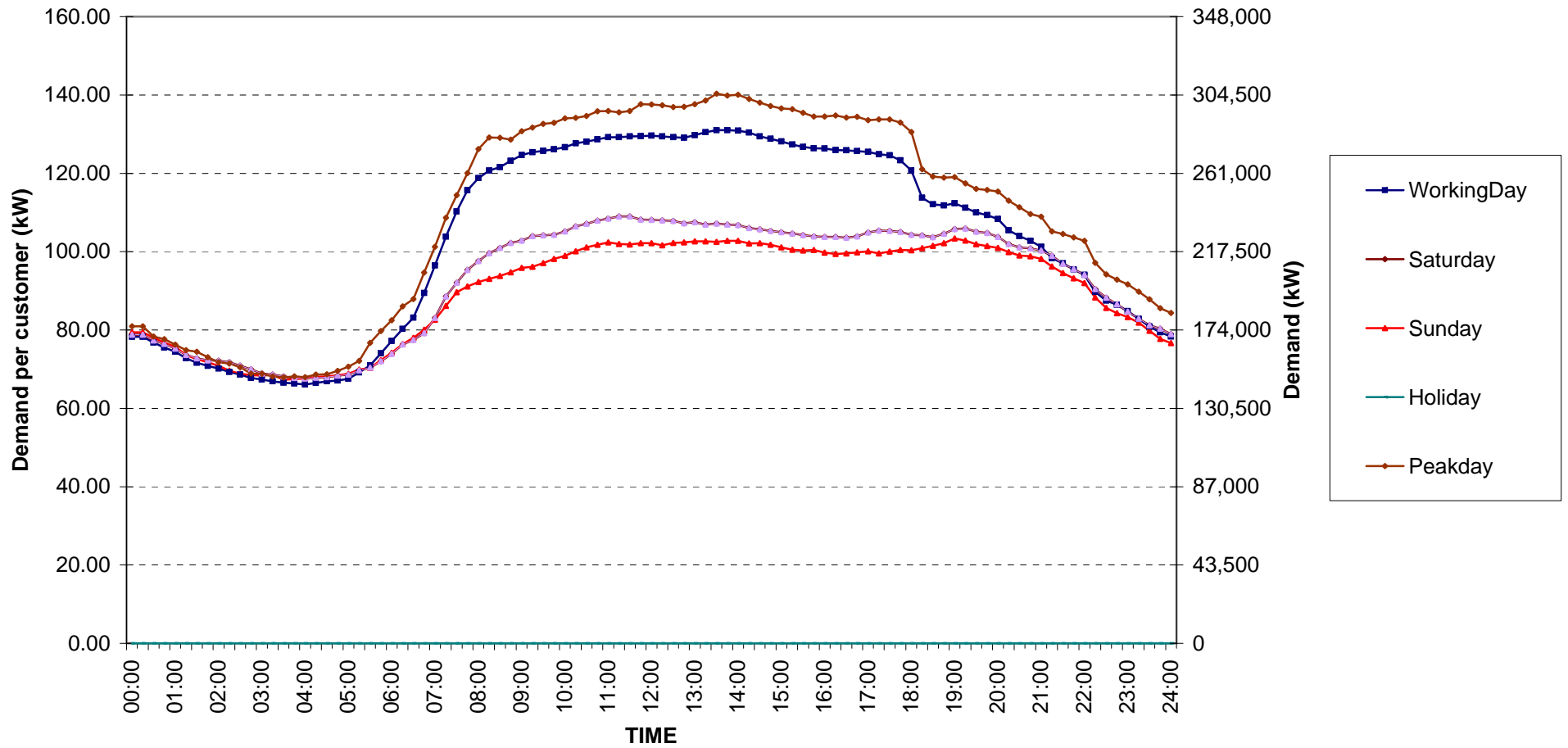


กราฟรูปที่ 6

### Specific Business Load Profile

Date: 1 Jun, 2007 to 30 Jun, 2007

Number of sample customers = 76

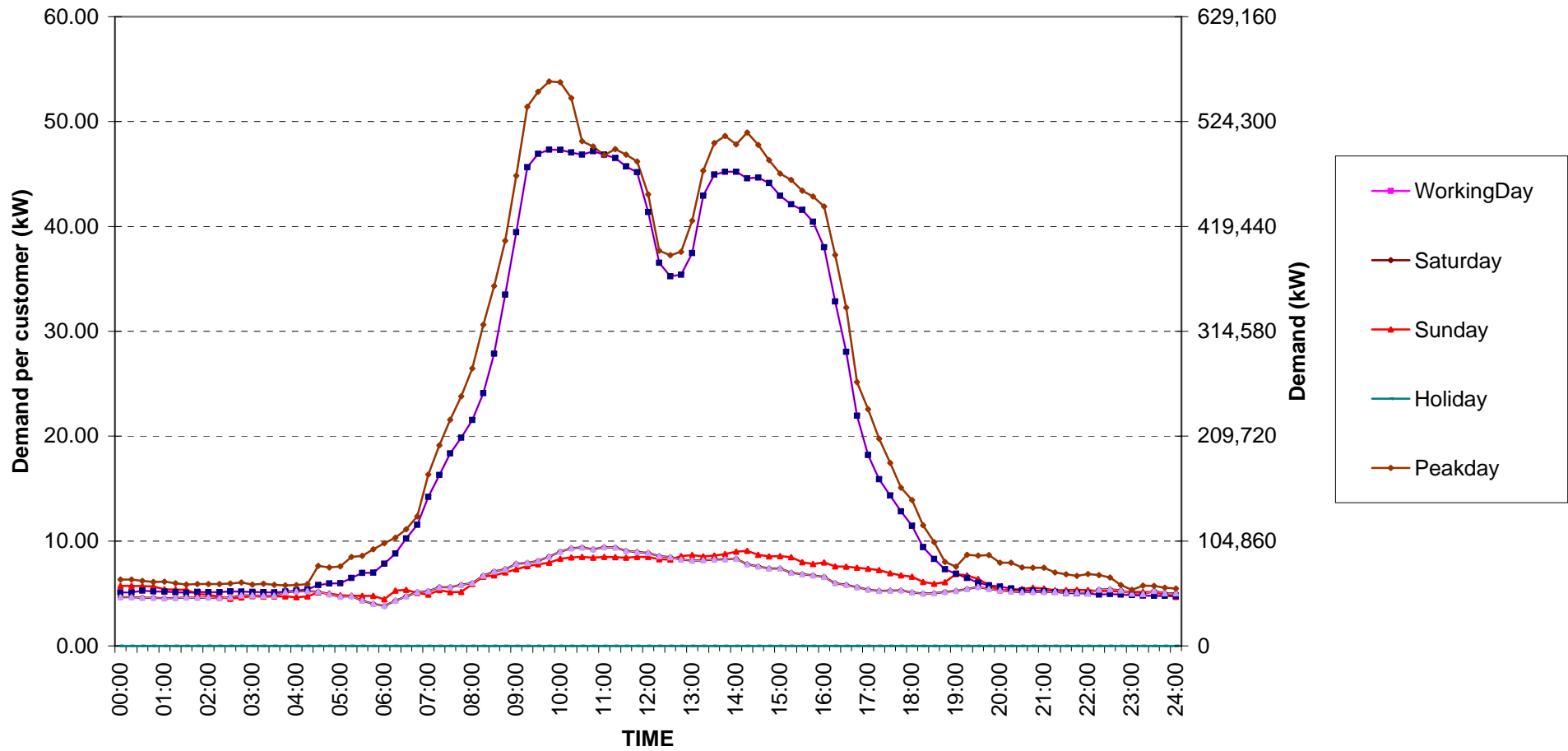


กราฟรูปที่ 7

# Government institutions and non-profit organizations Load Profile

Date: 1 Jun, 2007 to 30 Jun, 2007

Number of sample customers = 68

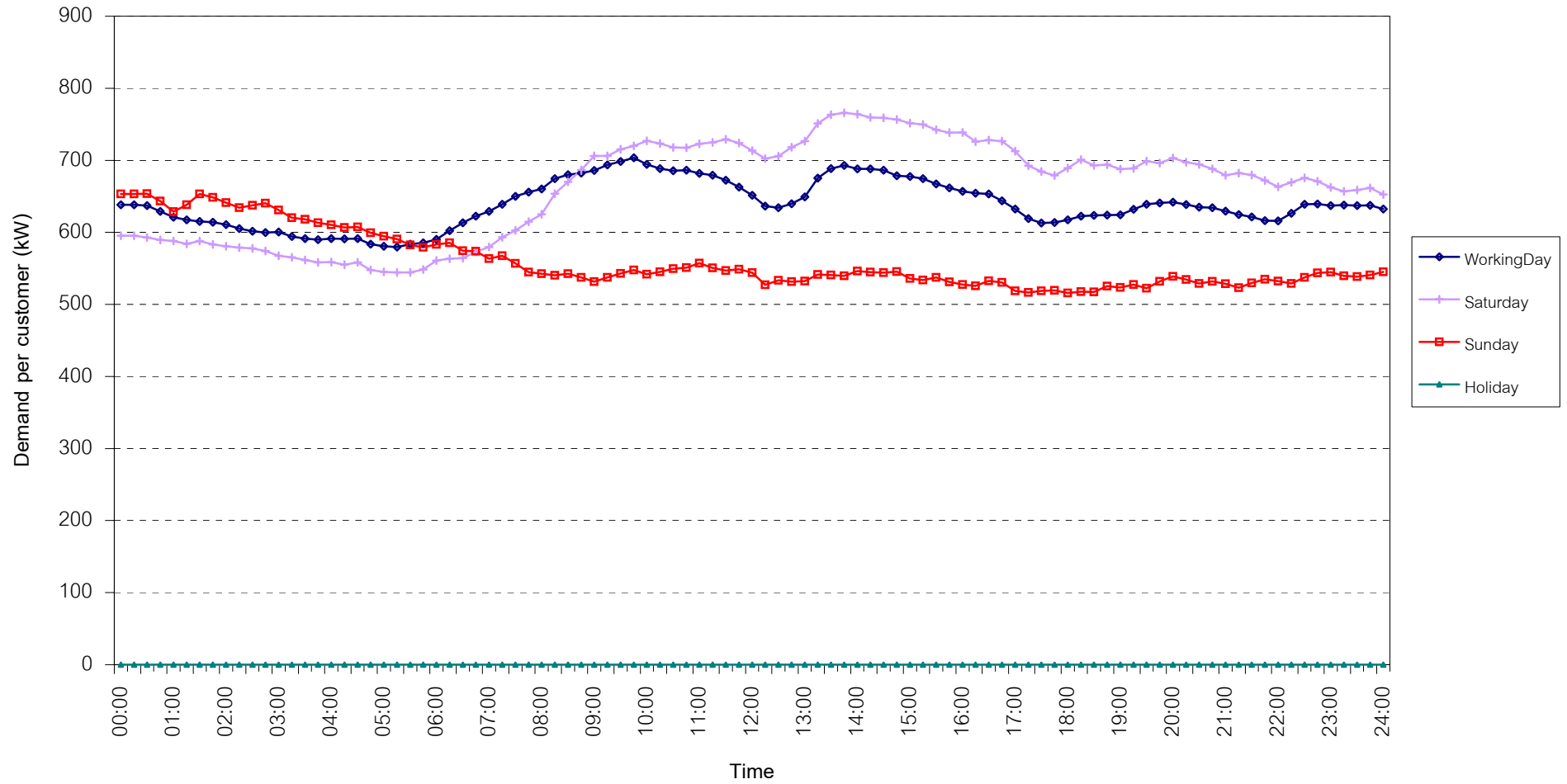


กราฟรูปที่ 8

TSIC 31 (Food Processing) Load Profile

Date: 1 Jun, 2007 to 30 Jun, 2007

Number of sample customers = 30

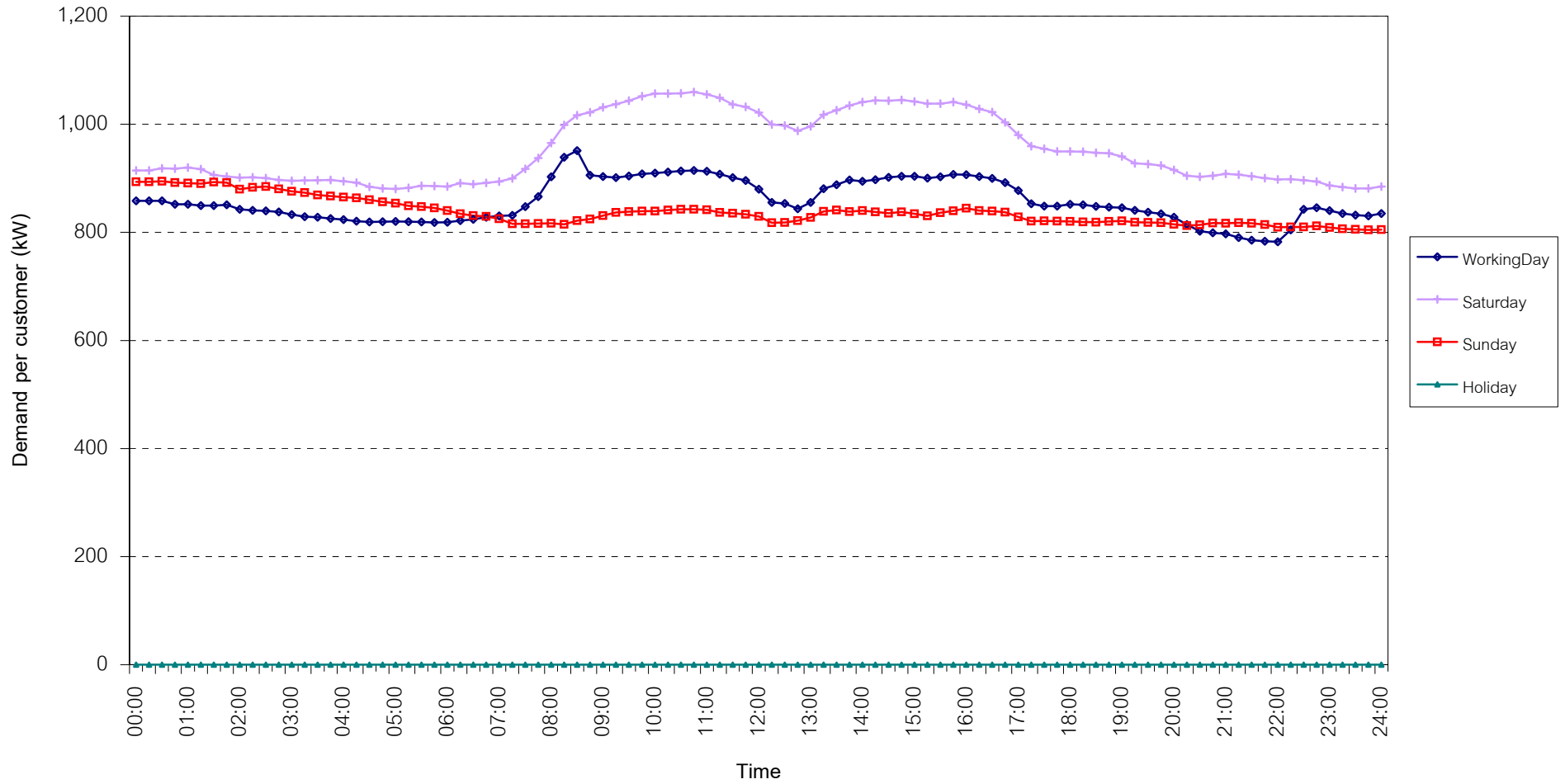


กราฟรูปที่ 9

TSIC 32 (Textiles) Load Profile

Date: 1 Jun, 2007 to 30 Jun, 2007

Number of sample customers = 63

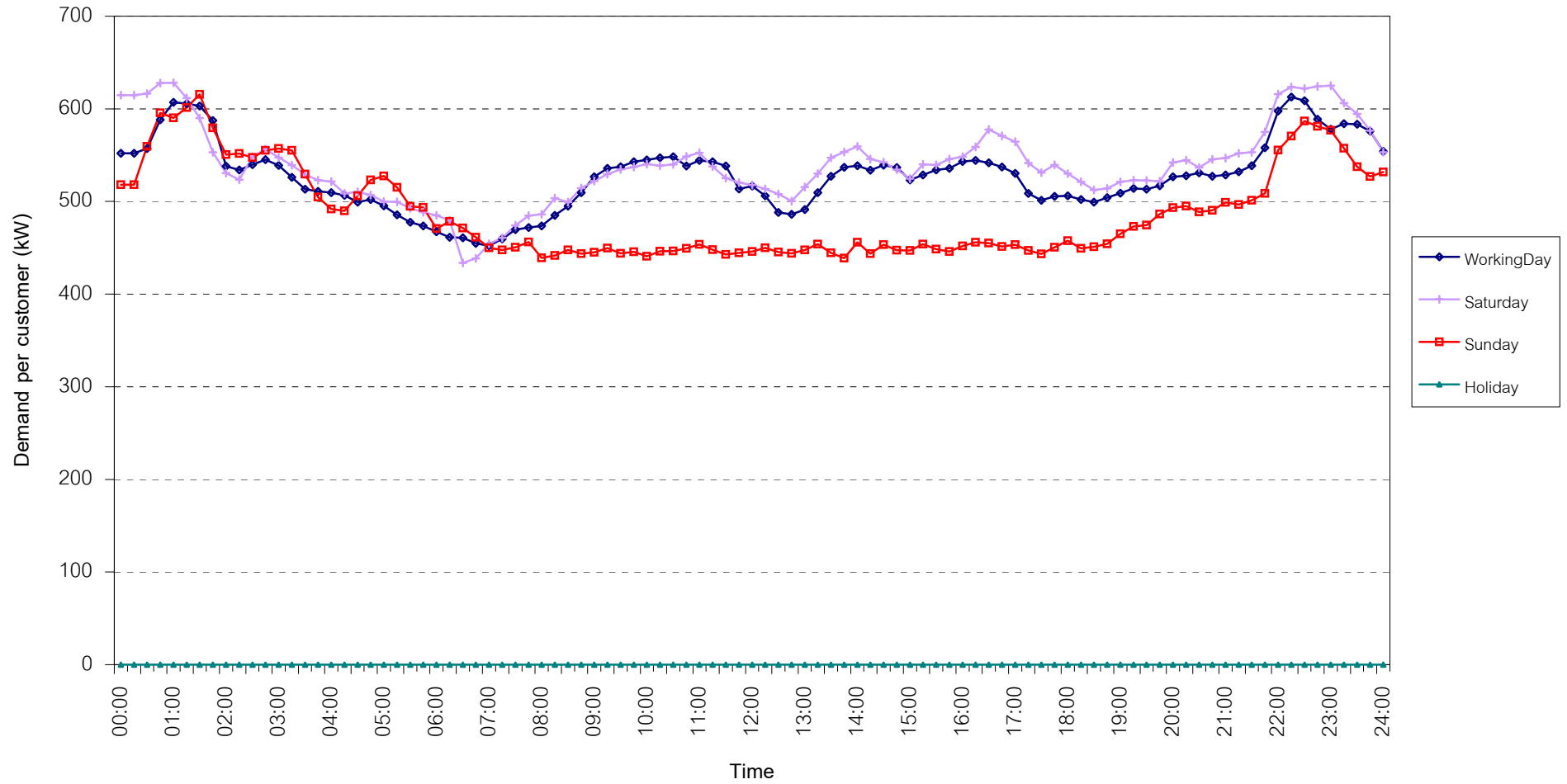


กราฟรูปที่ 10

TSIC 34 (Paper & Printing) Load Profile

Date: 1 Jun, 2007 to 30 Jun, 2007

Number of sample customers = 10

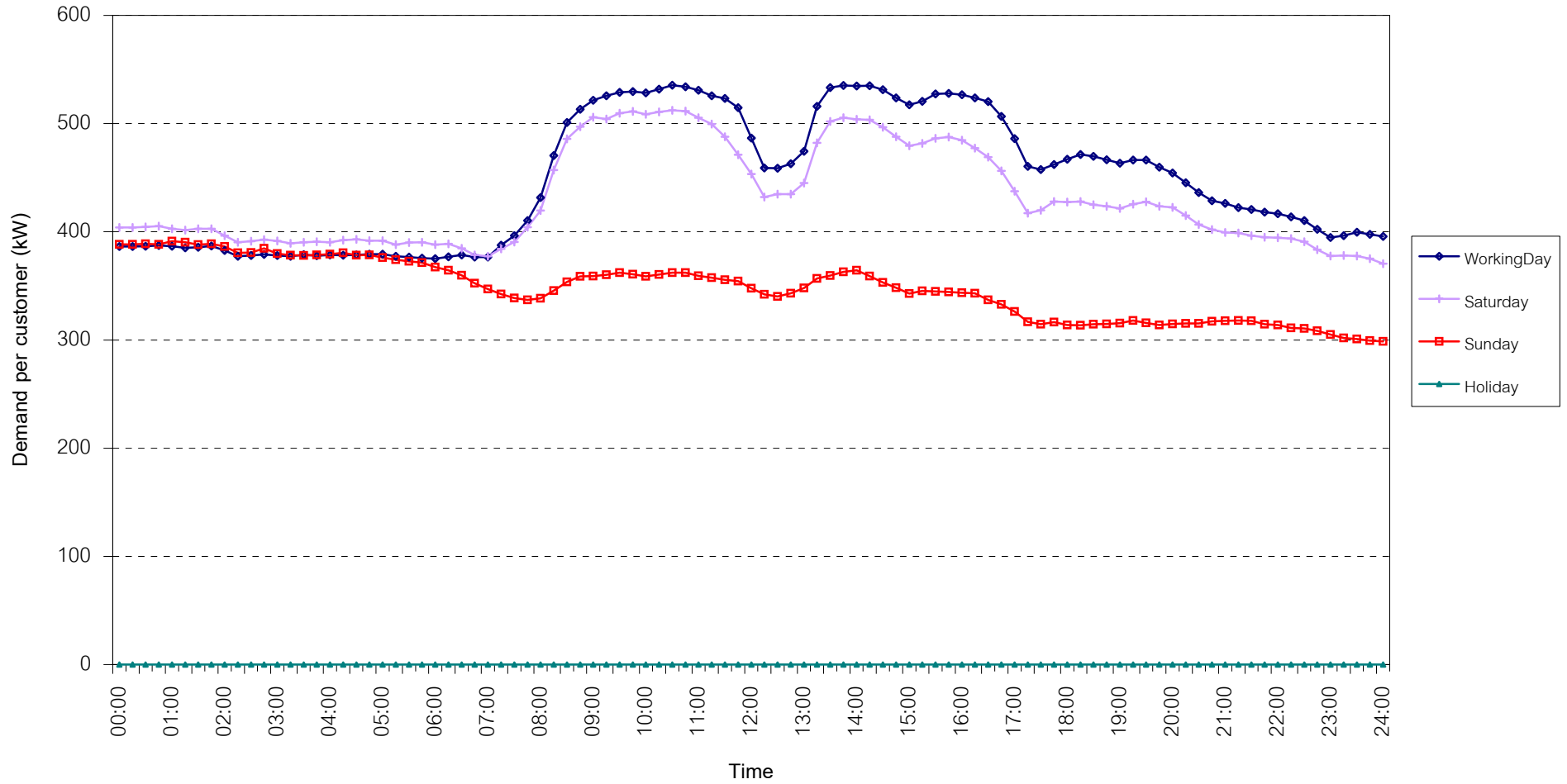


กราฟรูปที่ 11

TSIC 35 (Chemical & Petroleum) Load Profile

Date: 1 Jun, 2007 to 30 Jun, 2007

Number of sample customers = 62

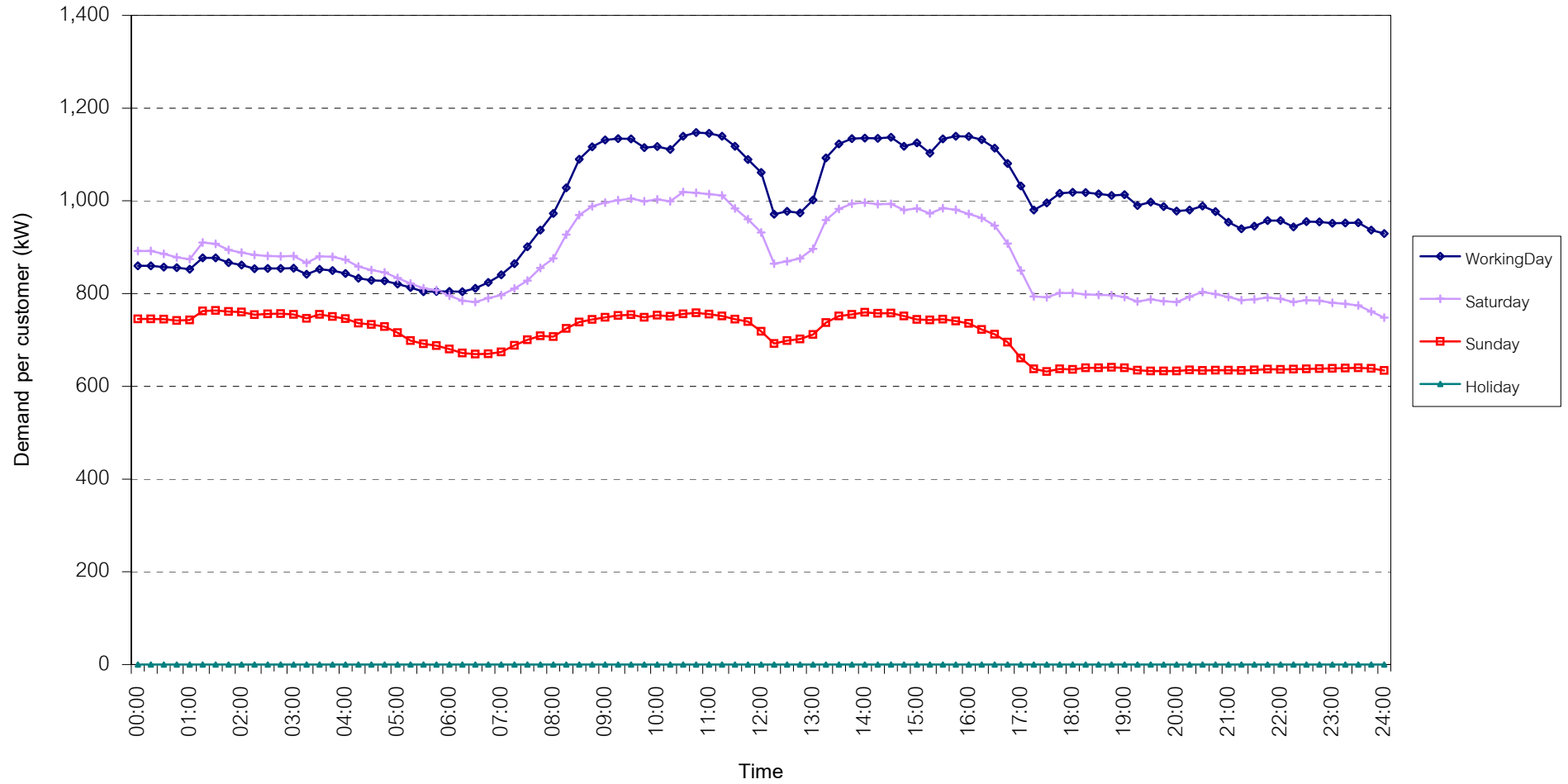


กราฟรูปที่ 12

TSIC 38 (Fabricated Metal Products) Load Profile

Date: 1 Jun, 2007 to 30 Jun, 2007

Number of sample customers = 61

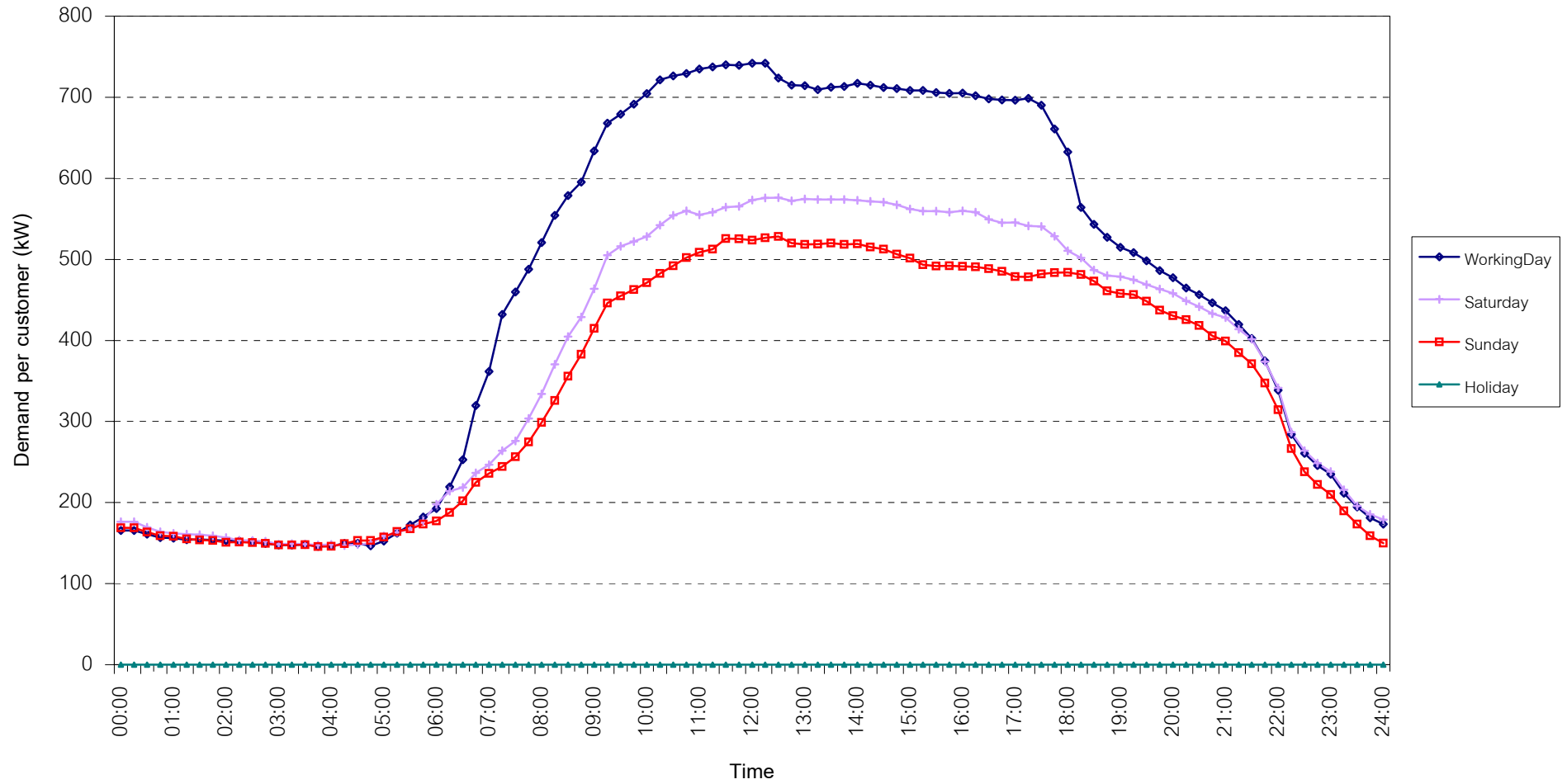


กราฟรูปที่ 13

TSIC 61 (Wholesale Trade) Load Profile

Date: 1 Jun, 2007 to 30 Jun, 2007

Number of sample customers = 8

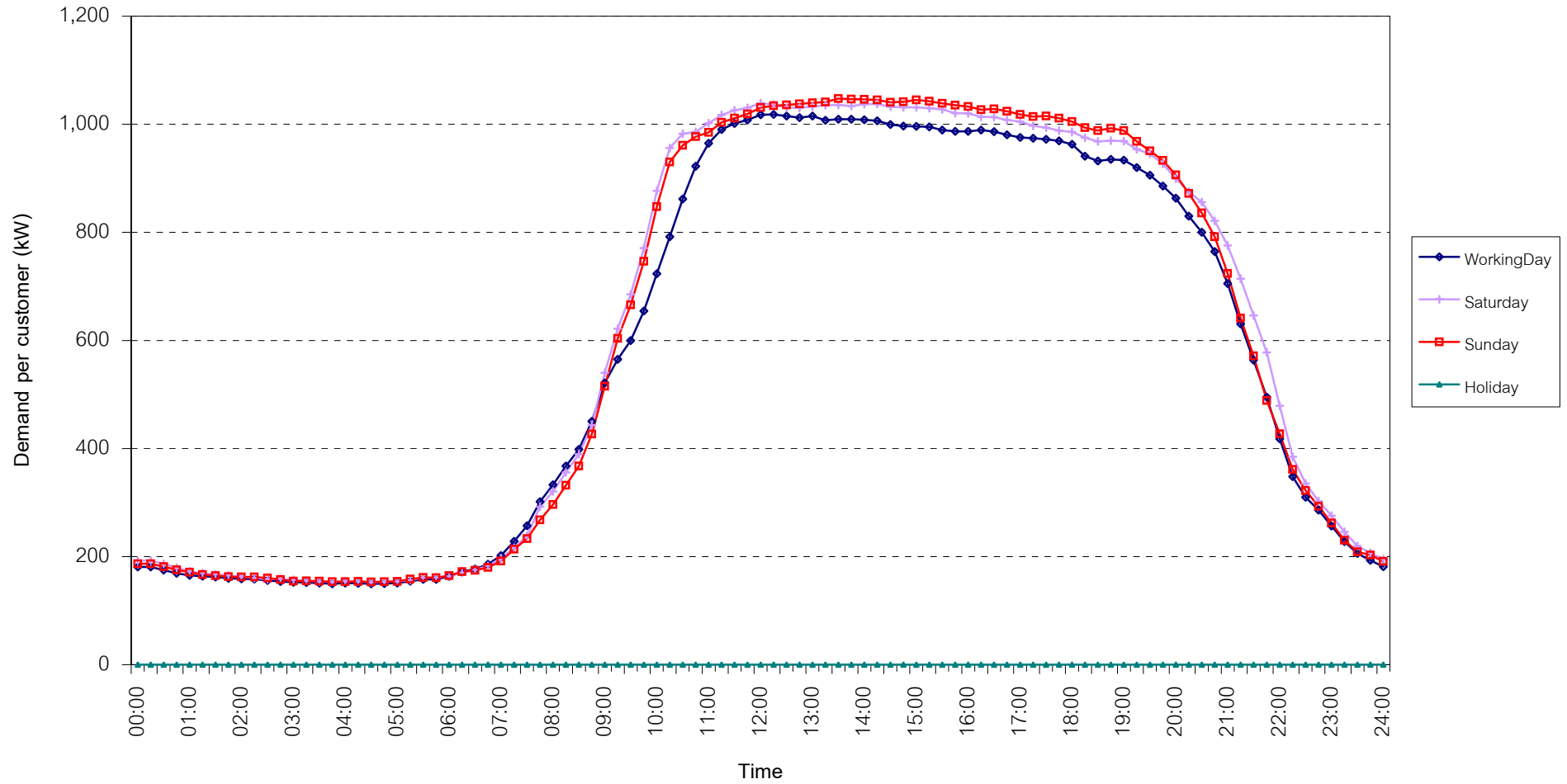


กราฟรูปที่ 14

TSIC 62 (Retail Trade) Load Profile

Date: 1 Jun, 2007 to 30 Jun, 2007

Number of sample customers = 73

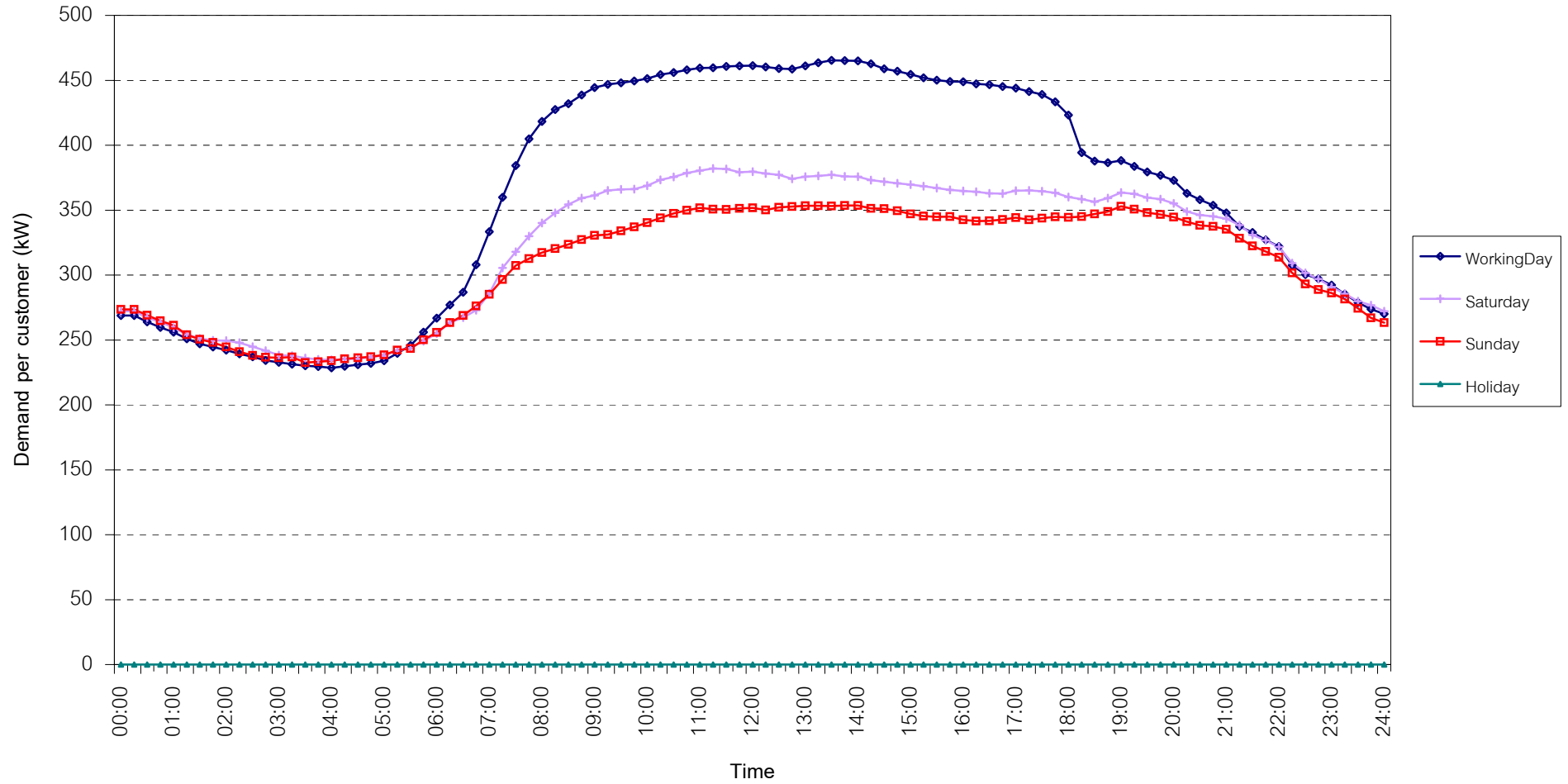


กราฟรูปที่ 15

TSIC 63 (Hotels and restaurants) Load Profile

Date: 1 Jun, 2007 to 30 Jun, 2007

Number of sample customers = 82

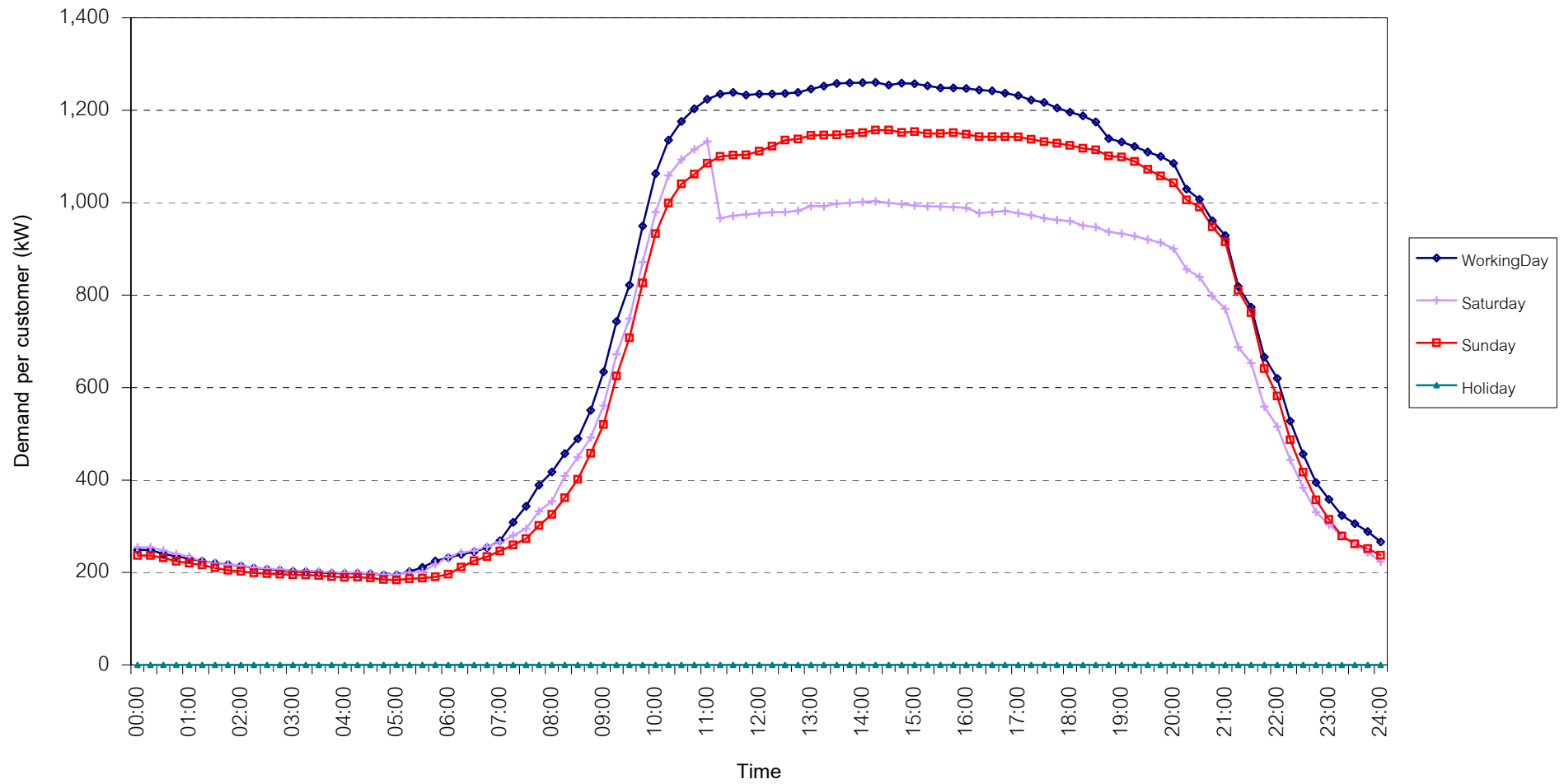


กราฟรูปที่ 16

TSIC 83 (Real Estate) Load Profile

Date: 1 Jun, 2007 to 30 Jun, 2007

Number of sample customers = 33

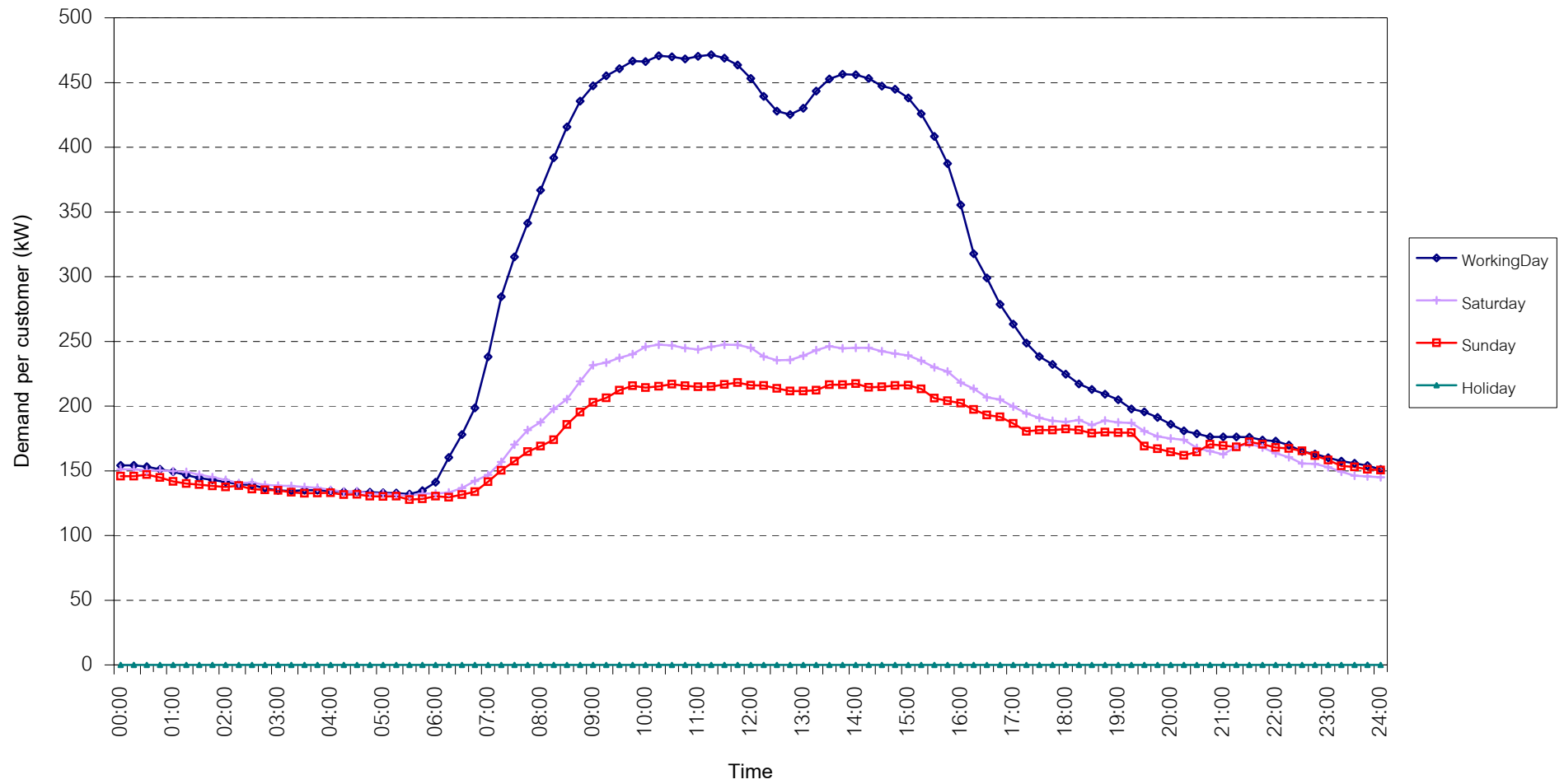


กราฟรูปที่ 17

TSIC 93 (Social Services) Load Profile

Date: 1 Jun, 2007 to 30 Jun, 2007

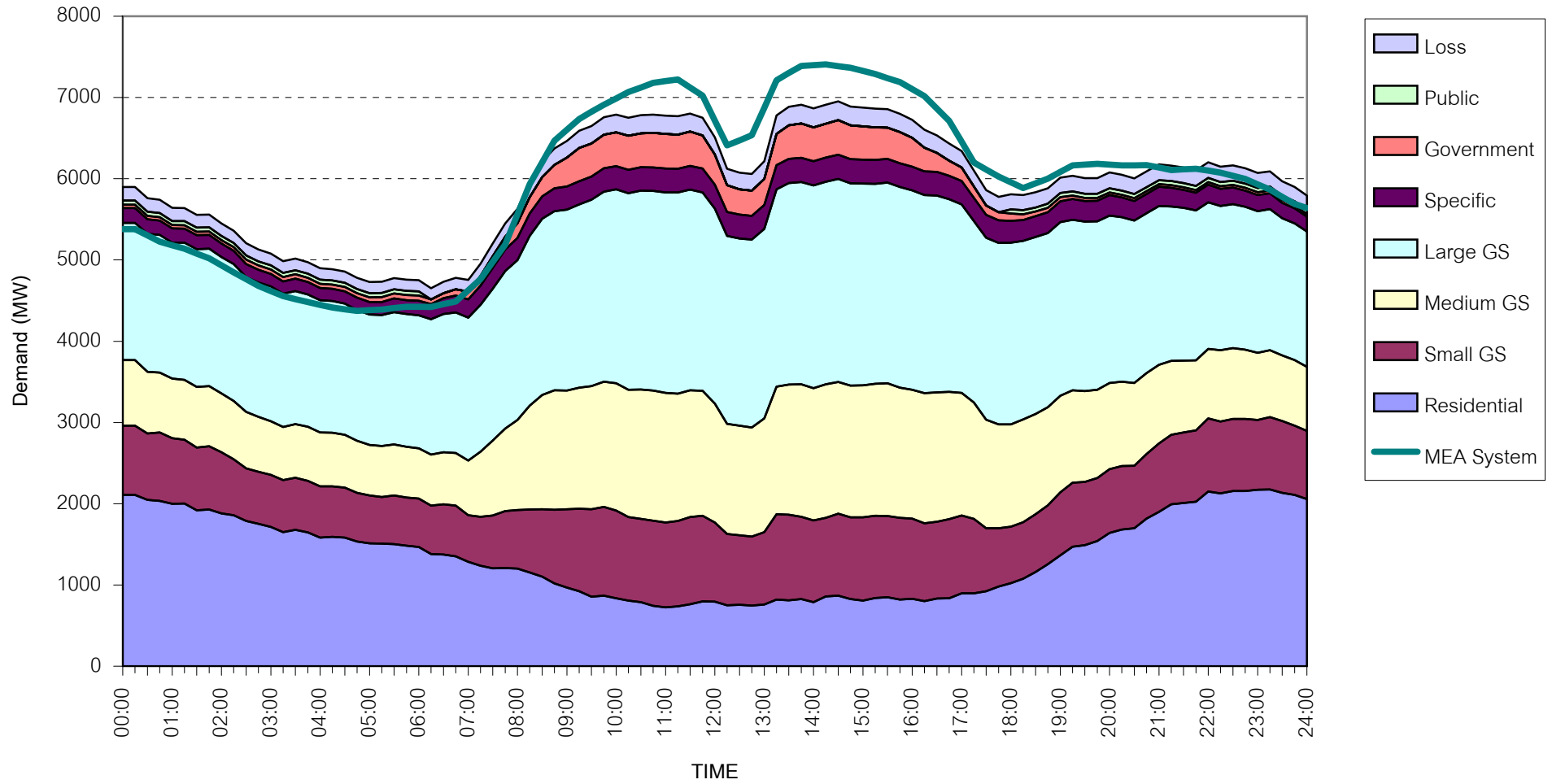
Number of sample customers = 21



กราฟรูปที่ 18

# MEA's System Load Profile

Peak Day 15 June, 2007 on 14:15



กราฟรูปที่ 19