

ข้อมูลการศึกษาลักษณะการใช้ไฟฟ้า

เดือน กรกฎาคม 2550

Table 1-1

COINCIDENT WITH SYSTEM LOAD RESEARCH SYSTEM'S PEAK ON July 15,2007 time 10:15 6,433.44 MW
 (MEA SYSTEM'S PEAK ON July 15,2007 time 14:30 6,908.32 MW)

| CLASS | Number of Customers | Kilowatt hours | Coincident Peak (MEA System Peak at time14:30) | | Coincident Peak (Load Research System Peak at time 10:15) | | Sector Diversified Demand | | |
|--|---------------------|----------------|--|------------------|---|------------------|---------------------------|-----------|-------|
| | | | MW | Contribution (%) | MW | Contribution (%) | Max MW. | Date | Time |
| Residential | 2,165,083 | 782,467,278 | 760.47 | 11.96 | 807.14 | 12.55 | 1,907.73 | 30 Jul 07 | 22:45 |
| Small General Service | 469,571 | 521,659,721 | 877.95 | 13.81 | 1,007.53 | 15.66 | 1,190.60 | 18 Jul 07 | 11:30 |
| Medium General Service | 19,914 | 677,822,122 | 1,456.63 | 22.91 | 1,417.30 | 22.03 | 1,618.65 | 16 Jul 07 | 14:45 |
| Large General Service | 1,590 | 1,329,751,720 | 2,420.68 | 38.06 | 2,314.52 | 35.98 | 2,506.21 | 25 Jul 07 | 11:15 |
| Specific Business | 2,181 | 149,565,169 | 271.90 | 4.28 | 264.18 | 4.11 | 280.68 | 25 Jul 07 | 13:00 |
| Government and non Profit organization | 10,481 | 110,545,198 | 354.28 | 5.57 | 415.04 | 6.45 | 545.54 | 23 Jul 07 | 11:00 |
| Public Lighting | - | 18,962,468 | 0.00 | 0.00 | 0.00 | 0.00 | 50.35 | - | - |
| Loss | - | 118,199,926 | 217.45 | 3.42 | 207.74 | 3.23 | 217.45 | 15 Jul 07 | 14:30 |
| TOTAL | 2,668,820 | 3,708,973,602 | 6,359.37 | 100 | 6,433.44 | 100 | 6,433.44 | 15 Jul 07 | 10:15 |

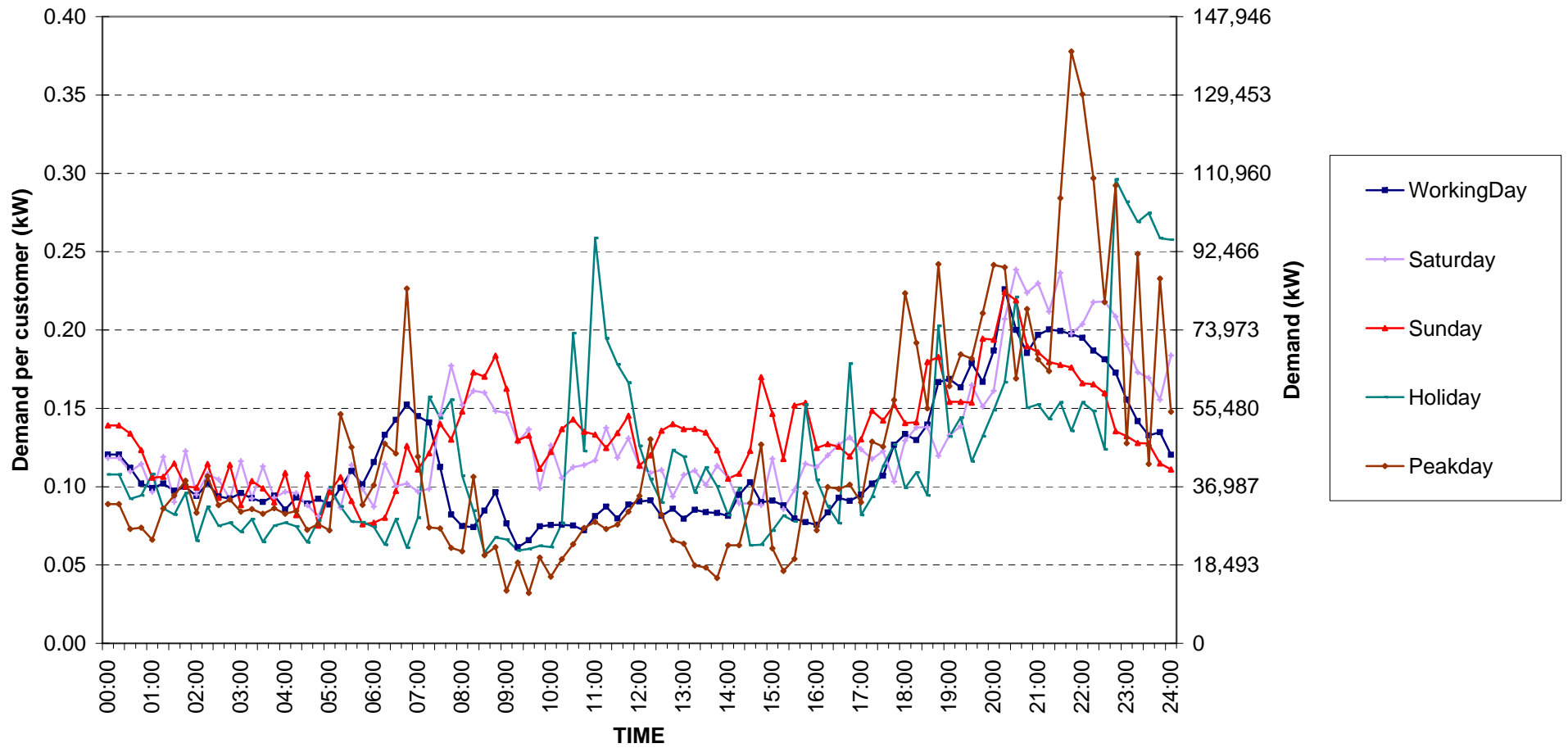
Table 1-2

Number of sample customers on July, 2007

| CLASS | Number of sample customers (Target) | Number of sample customers (Collected) |
|--|--|---|
| Residential | 191 | 191 |
| Small General Service | 297 | 297 |
| Medium General Service | 163 | 163 |
| Large General Service | 328 | 328 |
| Specific Business | 76 | 76 |
| Government and Non-profit Organization | 68 | 68 |
| TOTAL | 1,123 | 1,123 |

Residential (Energy Consumption less than 150 kWh per month)

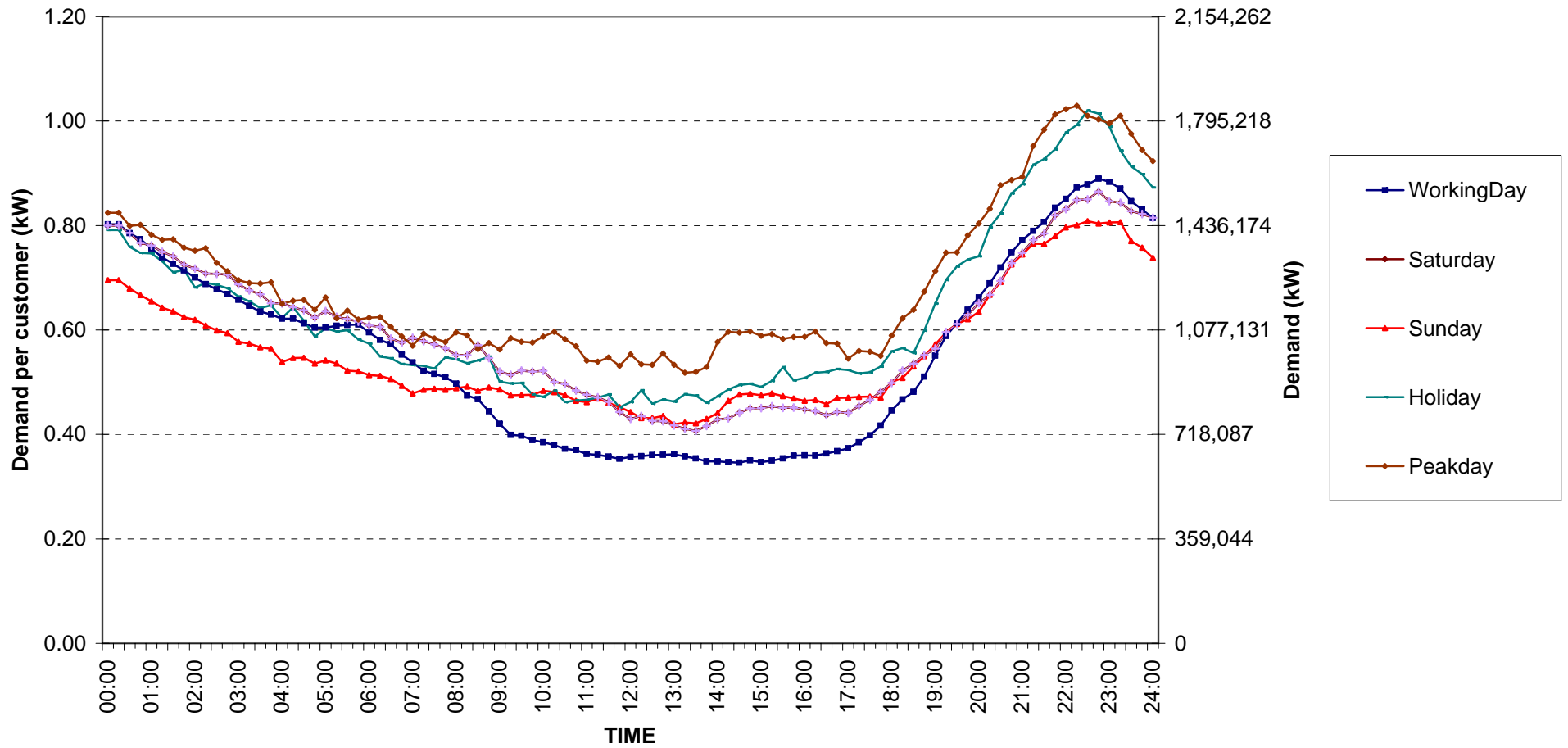
Date: 1 Jul, 2007 to 31 Jul, 2007



กราฟรูปที่ 1

Residential (Energy Consumption more than 150 kWh per month)

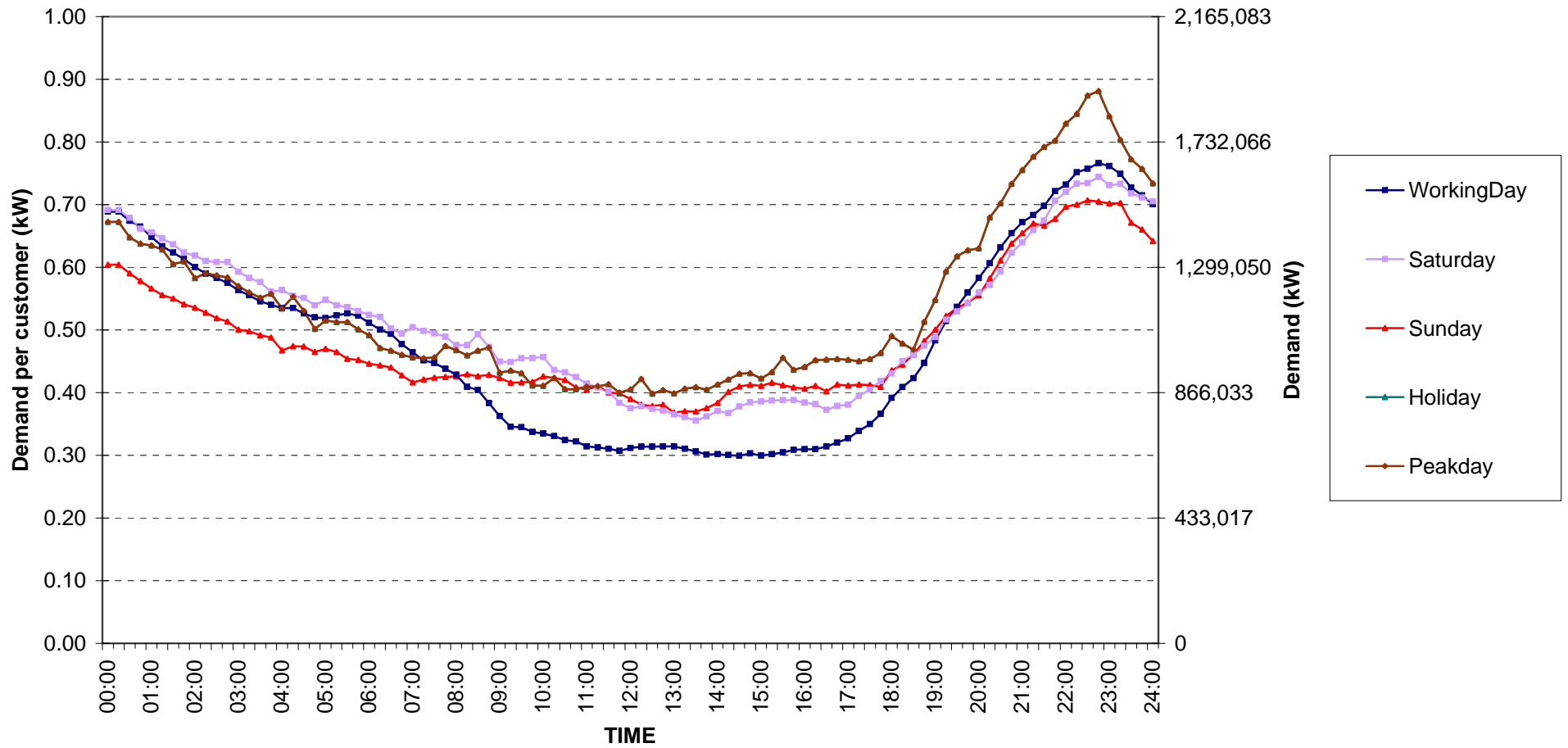
Date: 1 Jul, 2007 to 31 Jul, 2007



กราฟรูปที่ 2

Residential Load Profile

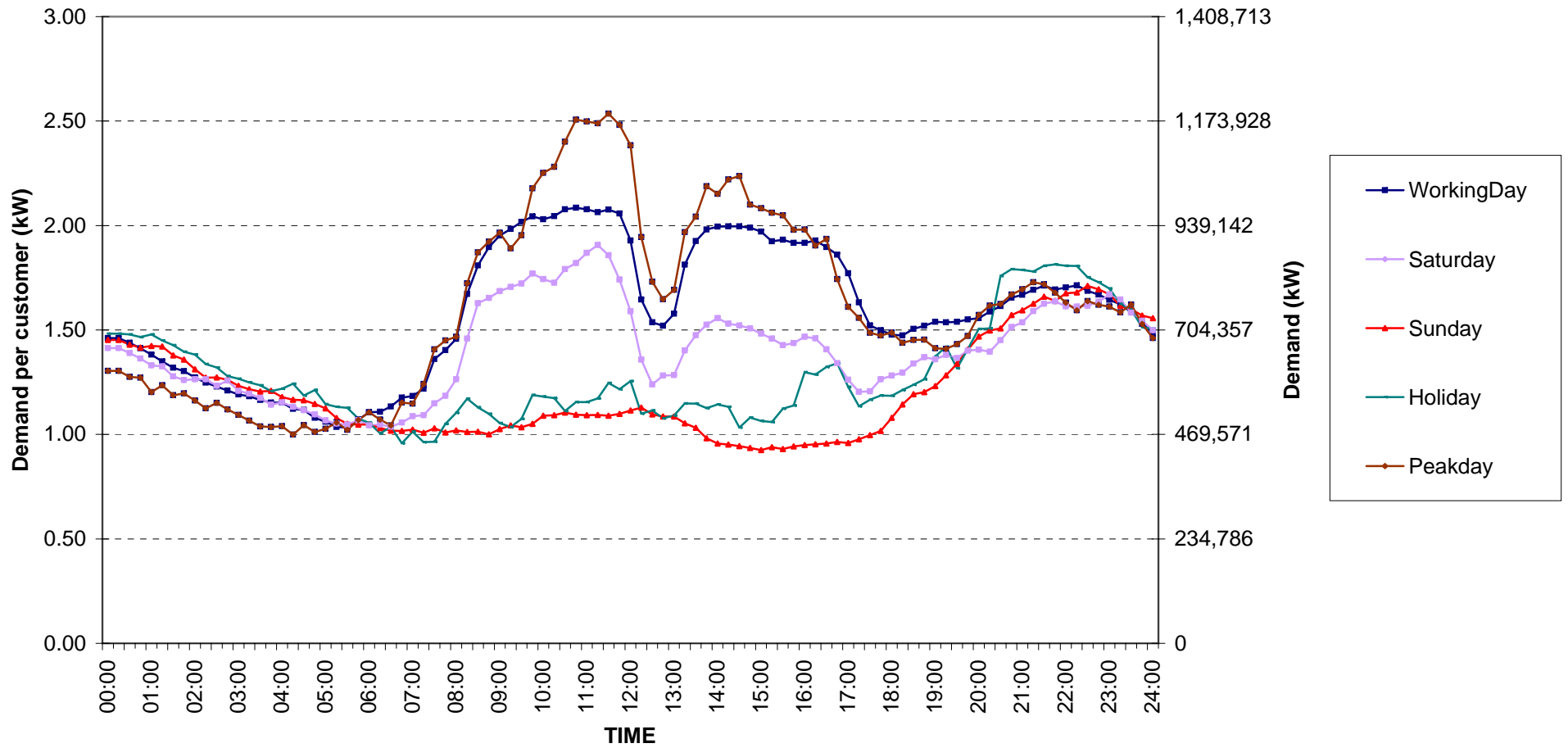
Date: 1 Jul, 2007 to 31 Jul, 2007



กราฟรูปที่ 3

Small General Services Load Profile

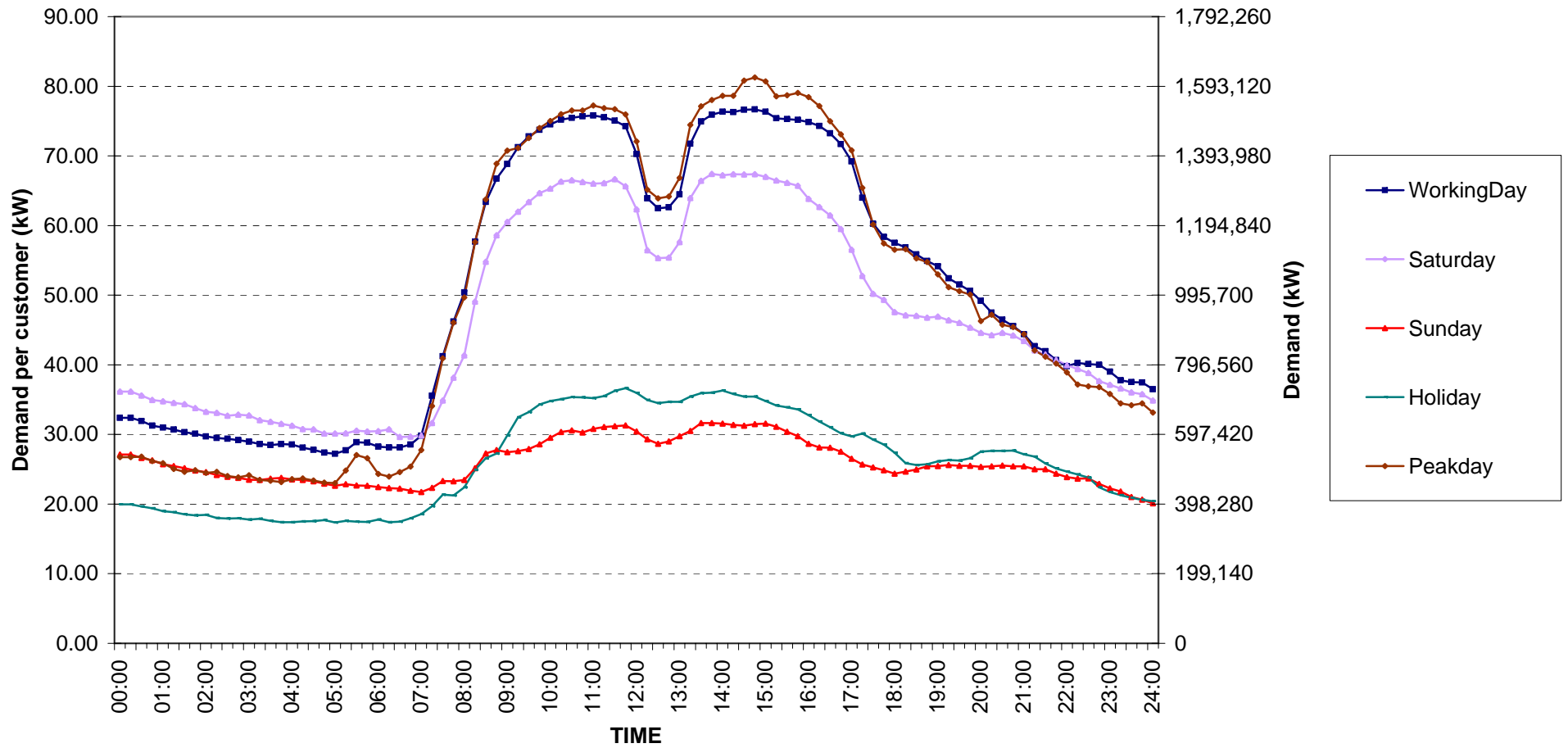
Date: 1 Jul, 2007 to 31 Jul, 2007



กราฟรูปที่ 4

Medium General Services Load Profile

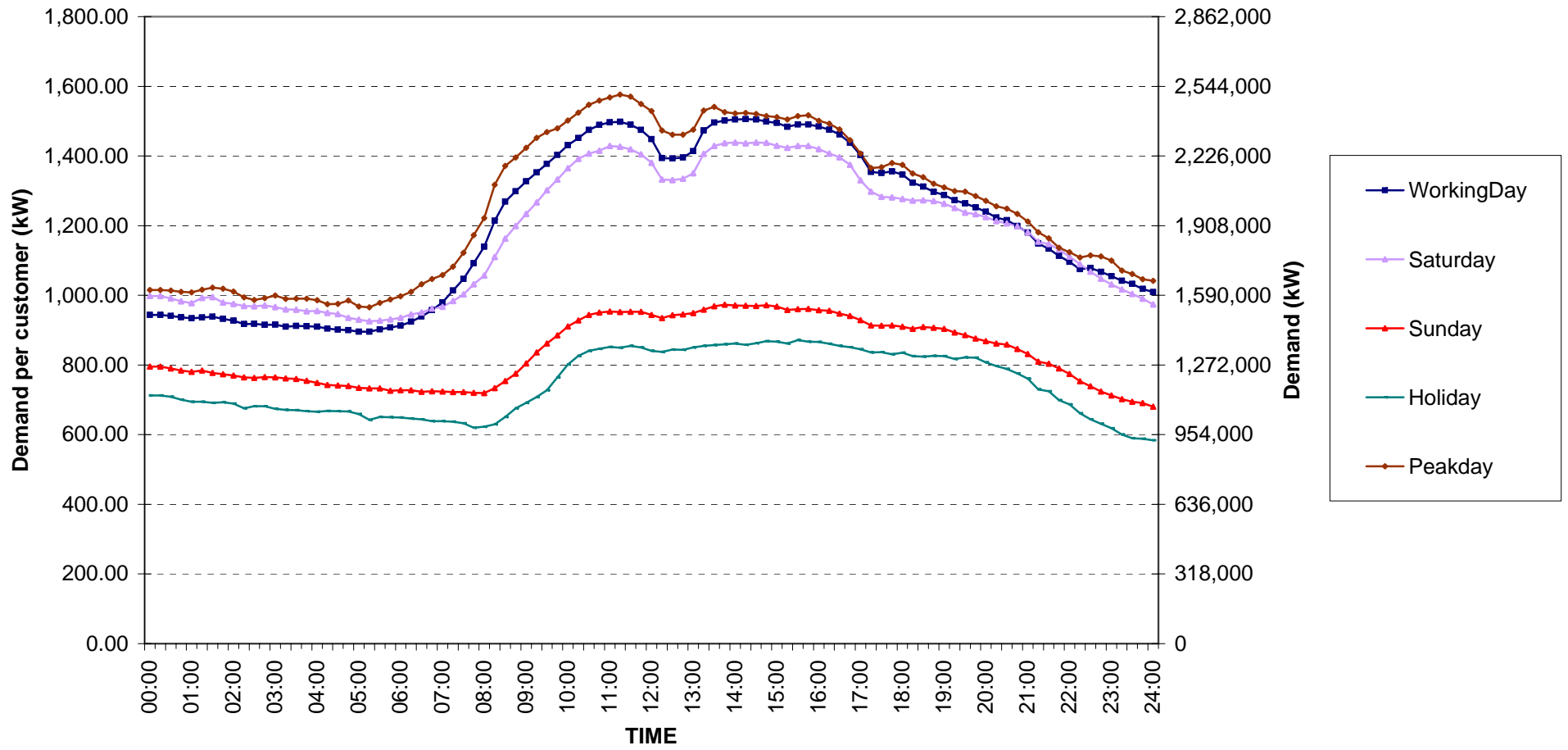
Date: 1 Jul, 2007 to 31 Jul, 2007



กราฟรูปที่ 5

Large General Services Load Profile

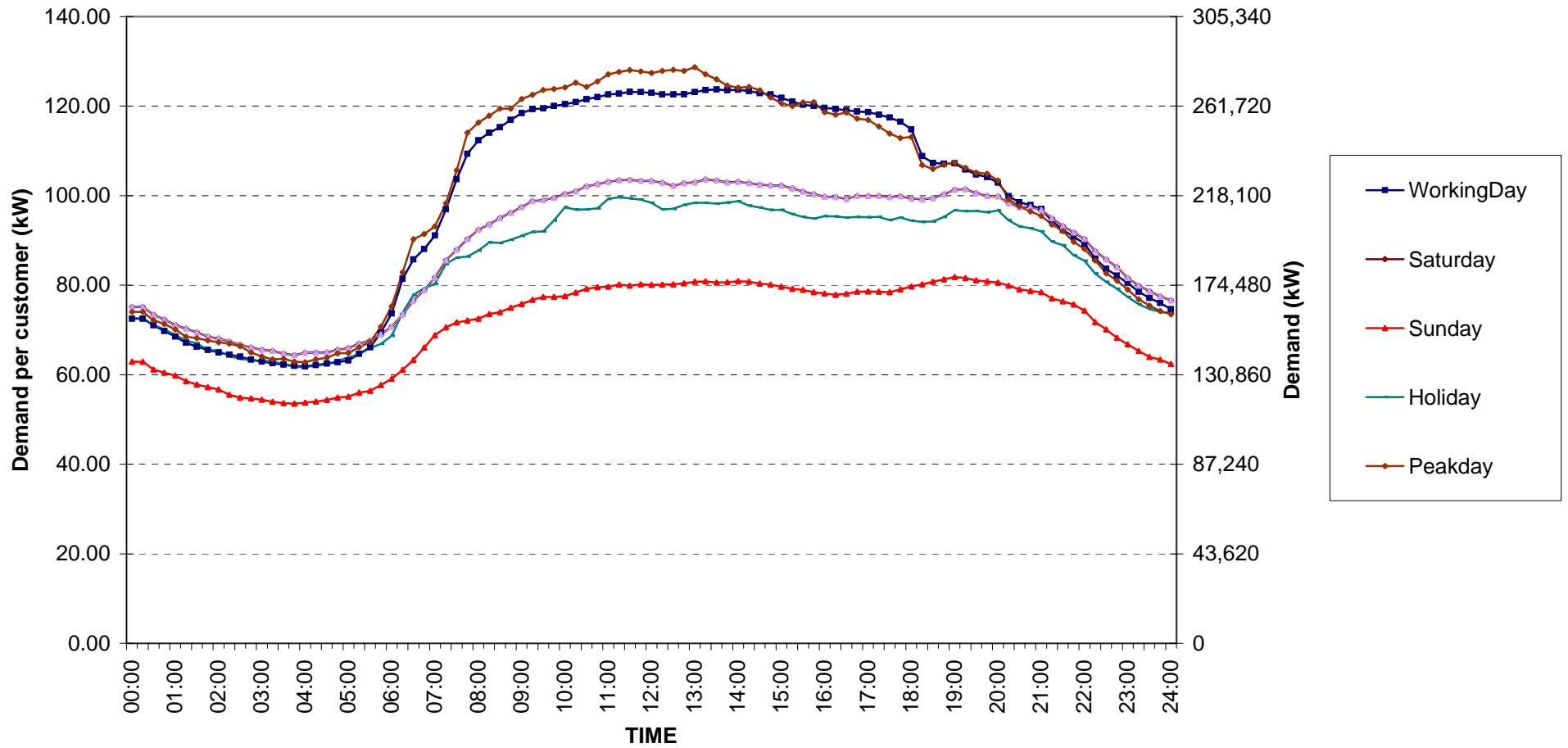
Date: 1 Jul, 2007 to 31 Jul, 2007



กราฟรูปที่ 6

Specific Business Load Profile

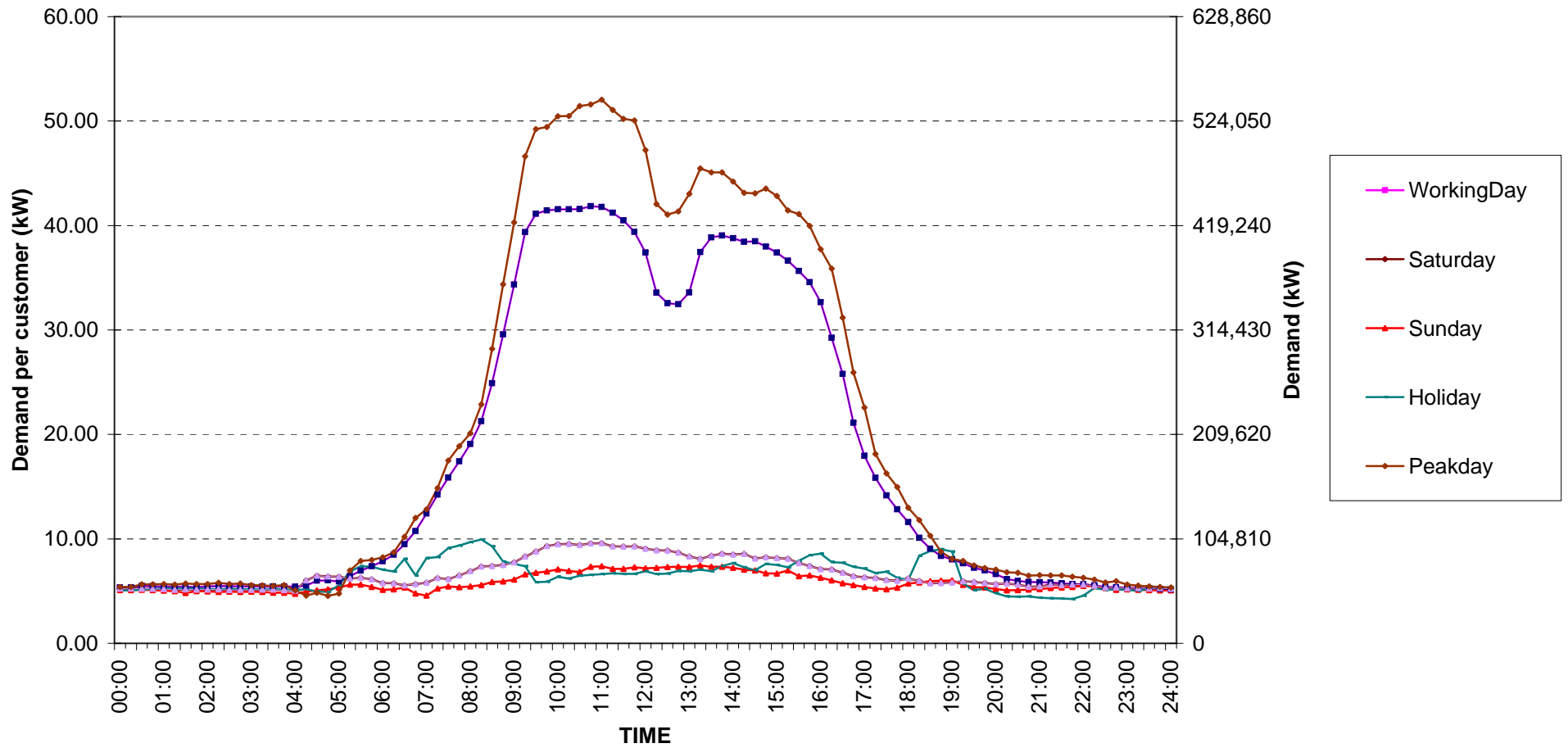
Date: 1 Jul, 2007 to 31 Jul, 2007



กราฟรูปที่ 7

Government institutions and non-profit organizations Load Profile

Date: 1 Jul, 2007 to 31 Jul, 2007

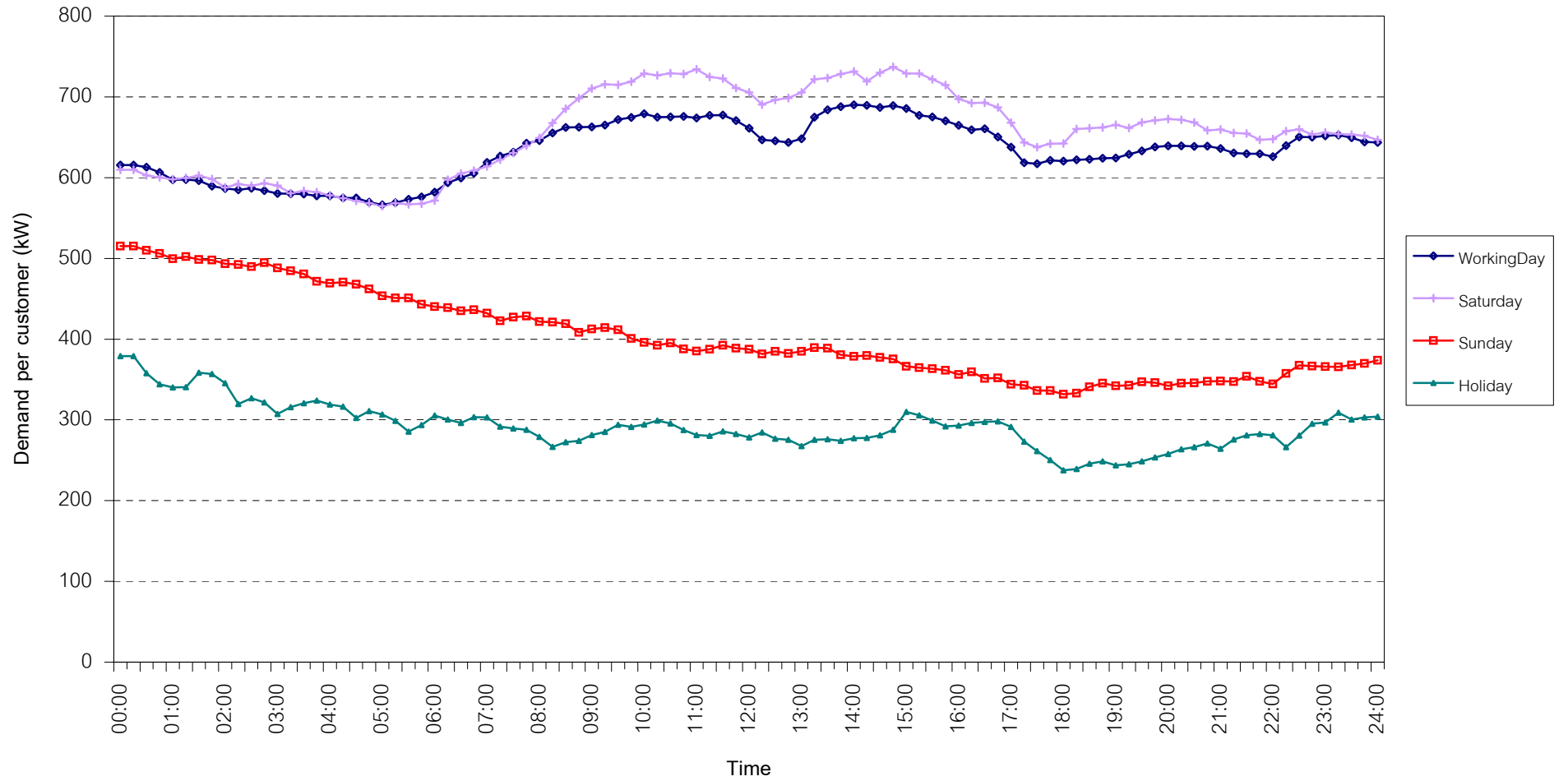


กราฟรูปที่ 8

TSIC 31 (Food Processing) Load Profile

Date: 1 Jul, 2007 to 31 Jul, 2007

Number of sample customers = 30

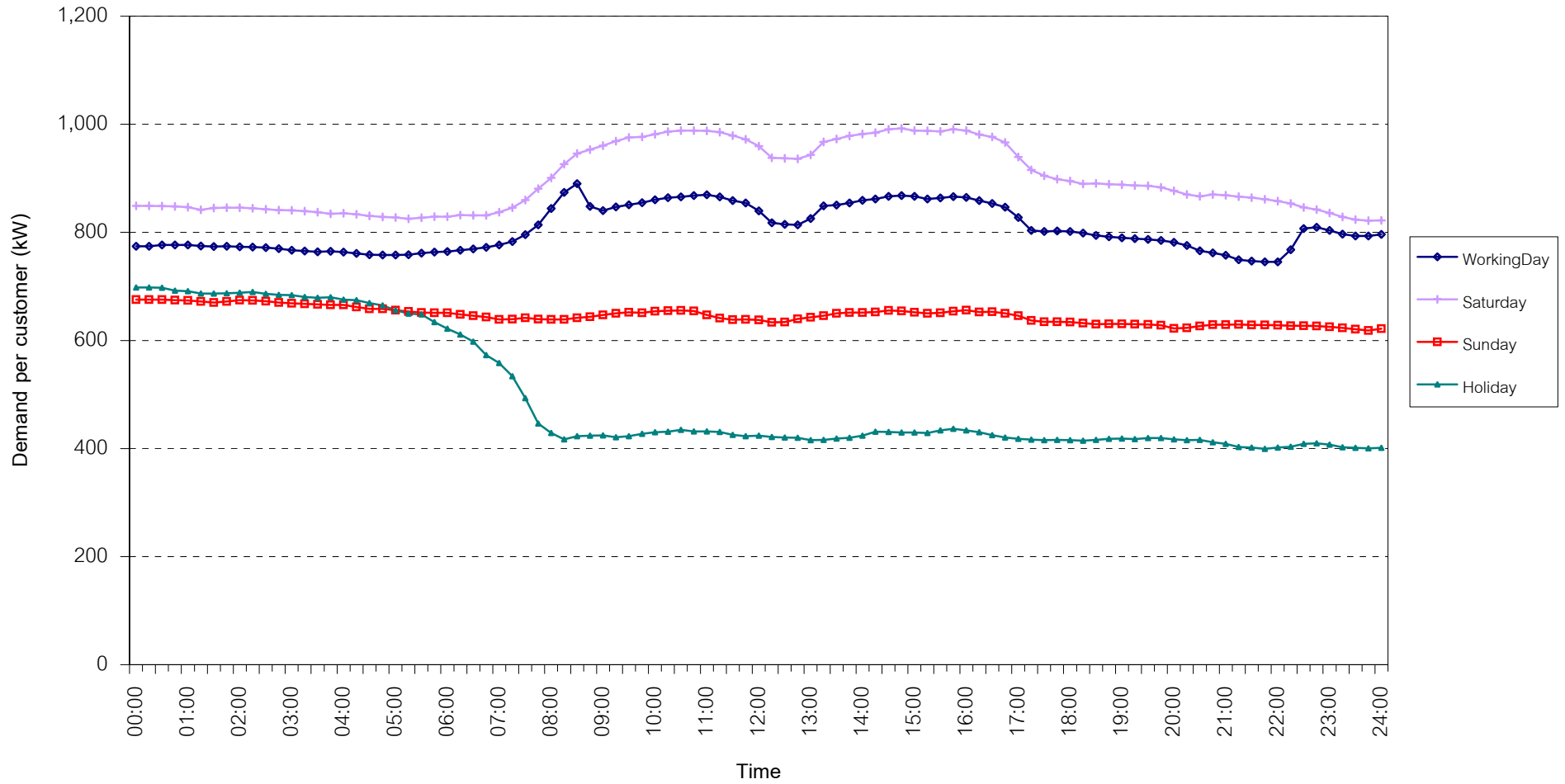


กราฟรูปที่ 9

TSIC 32 (Textiles) Load Profile

Date: 1 Jul, 2007 to 31 Jul, 2007

Number of sample customers = 63

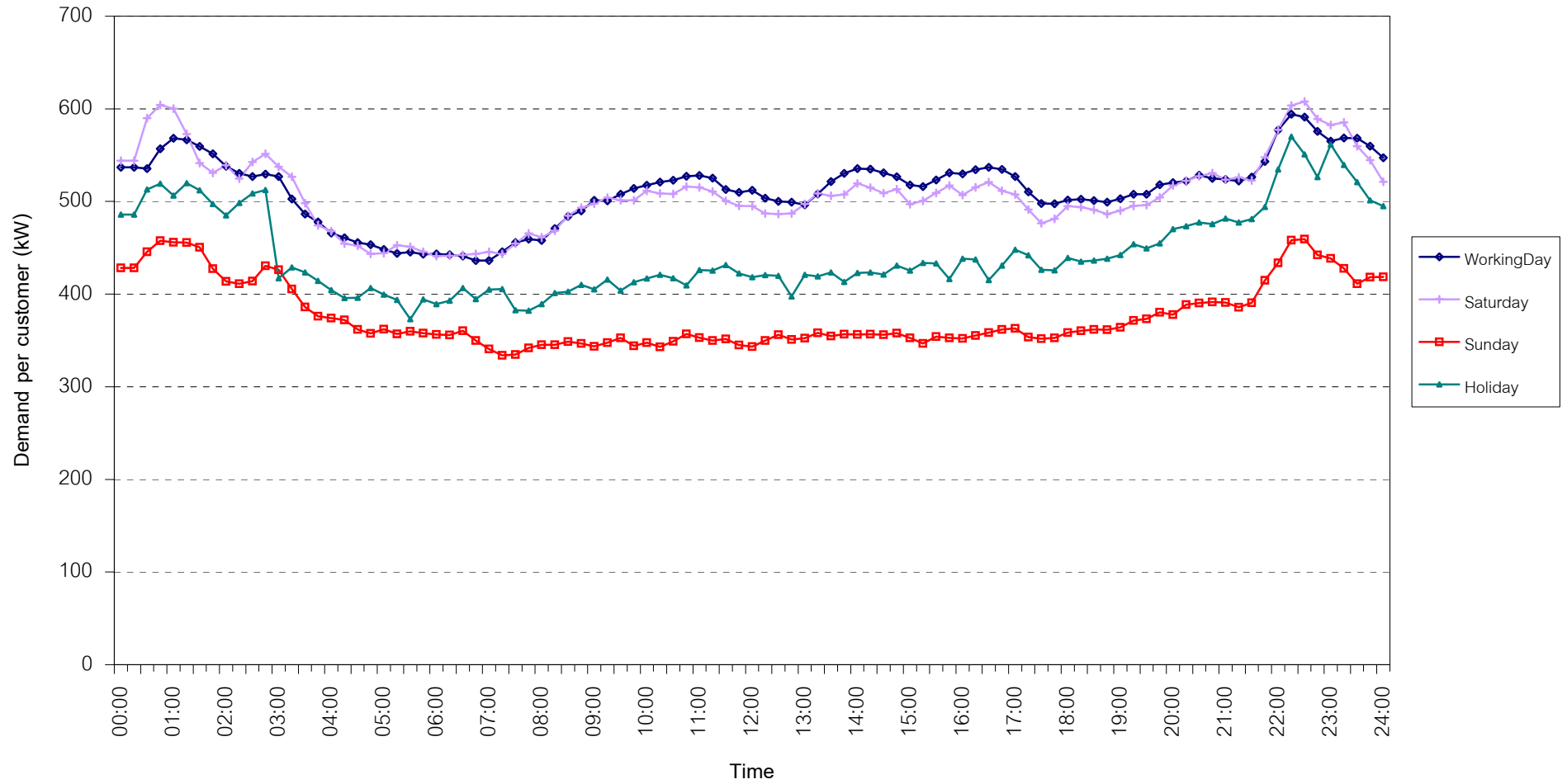


กราฟรูปที่ 10

TSIC 34 (Paper & Printing) Load Profile

Date: 1 Jul, 2007 to 31 Jul, 2007

Number of sample customers = 10

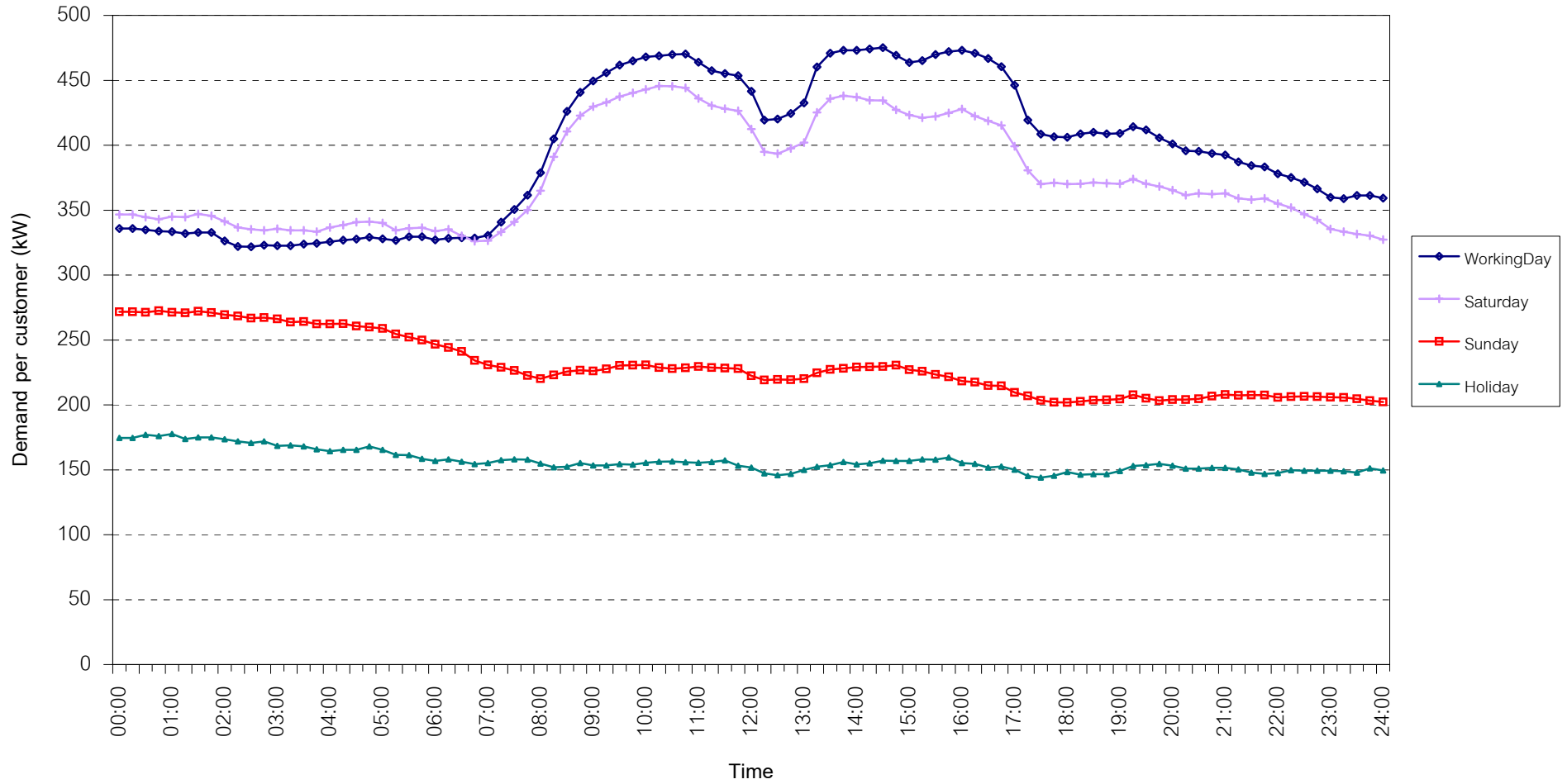


กราฟรูปที่ 11

TSIC 35 (Chemical & Petroleum) Load Profile

Date: 1 Jul, 2007 to 31 Jul, 2007

Number of sample customers = 62

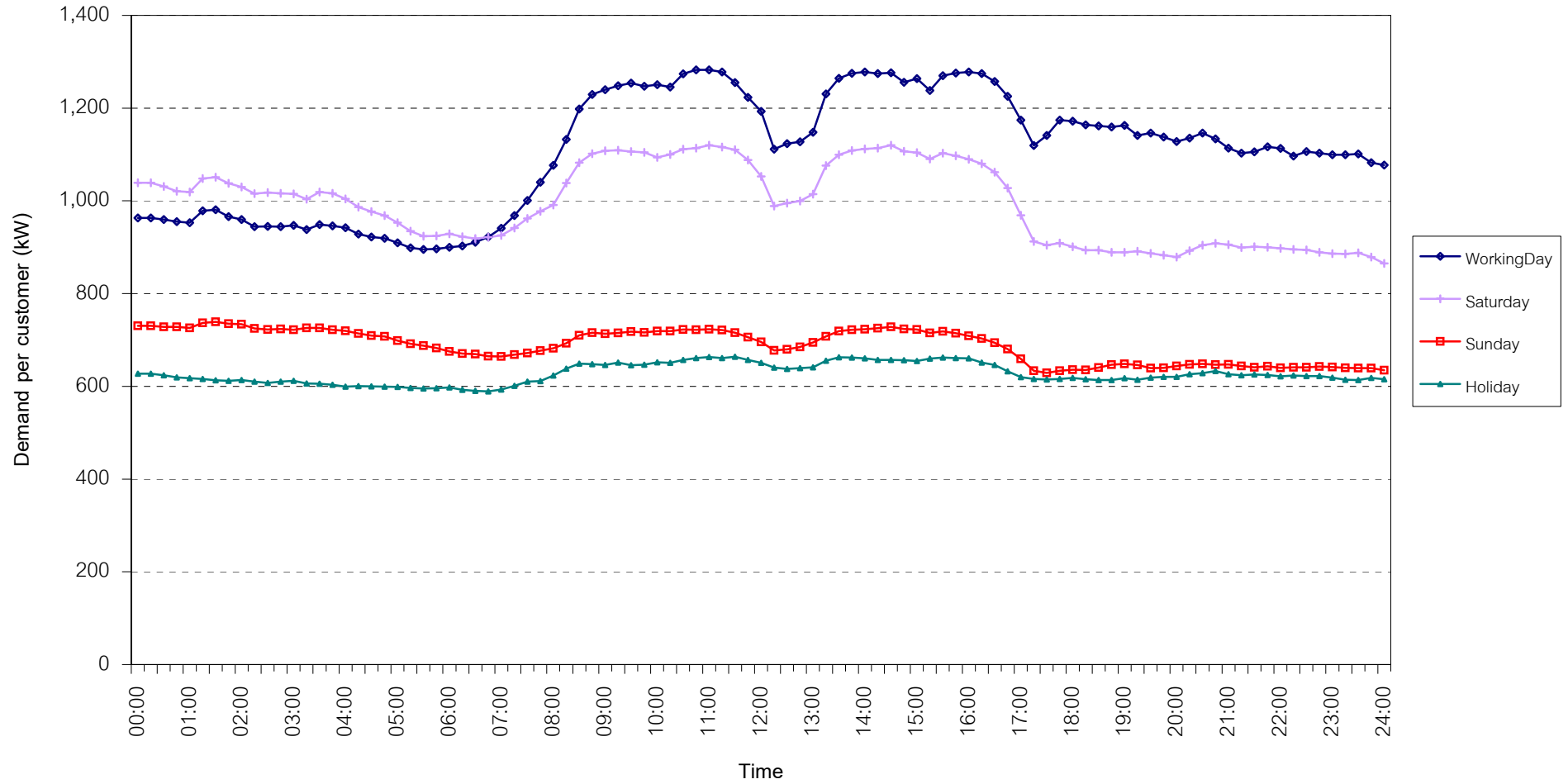


กราฟรูปที่ 12

TSIC 38 (Fabricated Metal Products) Load Profile

Date: 1 Jul, 2007 to 31 Jul, 2007

Number of sample customers = 61

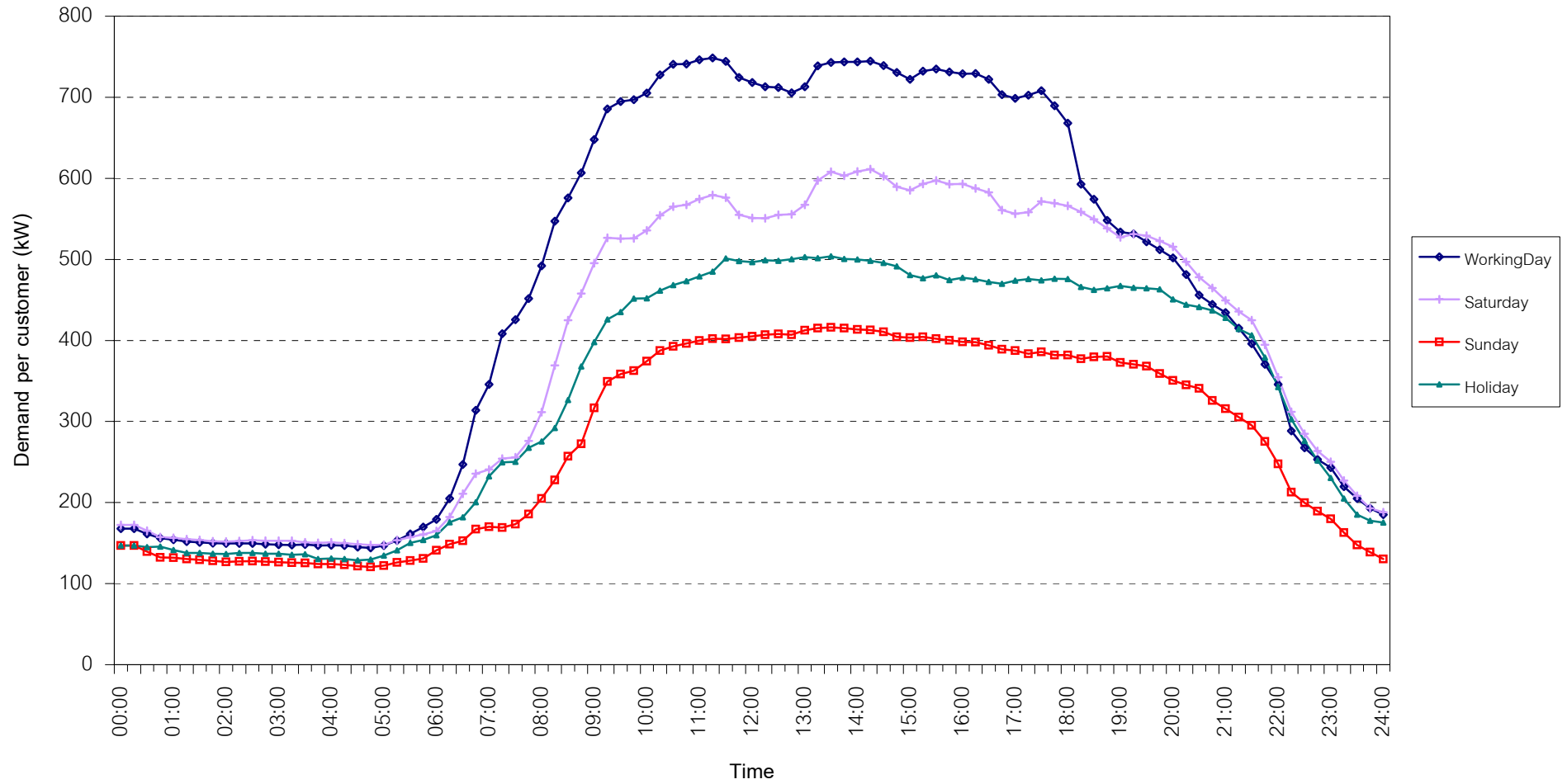


กราฟรูปที่ 13

TSIC 61 (Wholesale Trade) Load Profile

Date: 1 Jul, 2007 to 31 Jul, 2007

Number of sample customers = 8

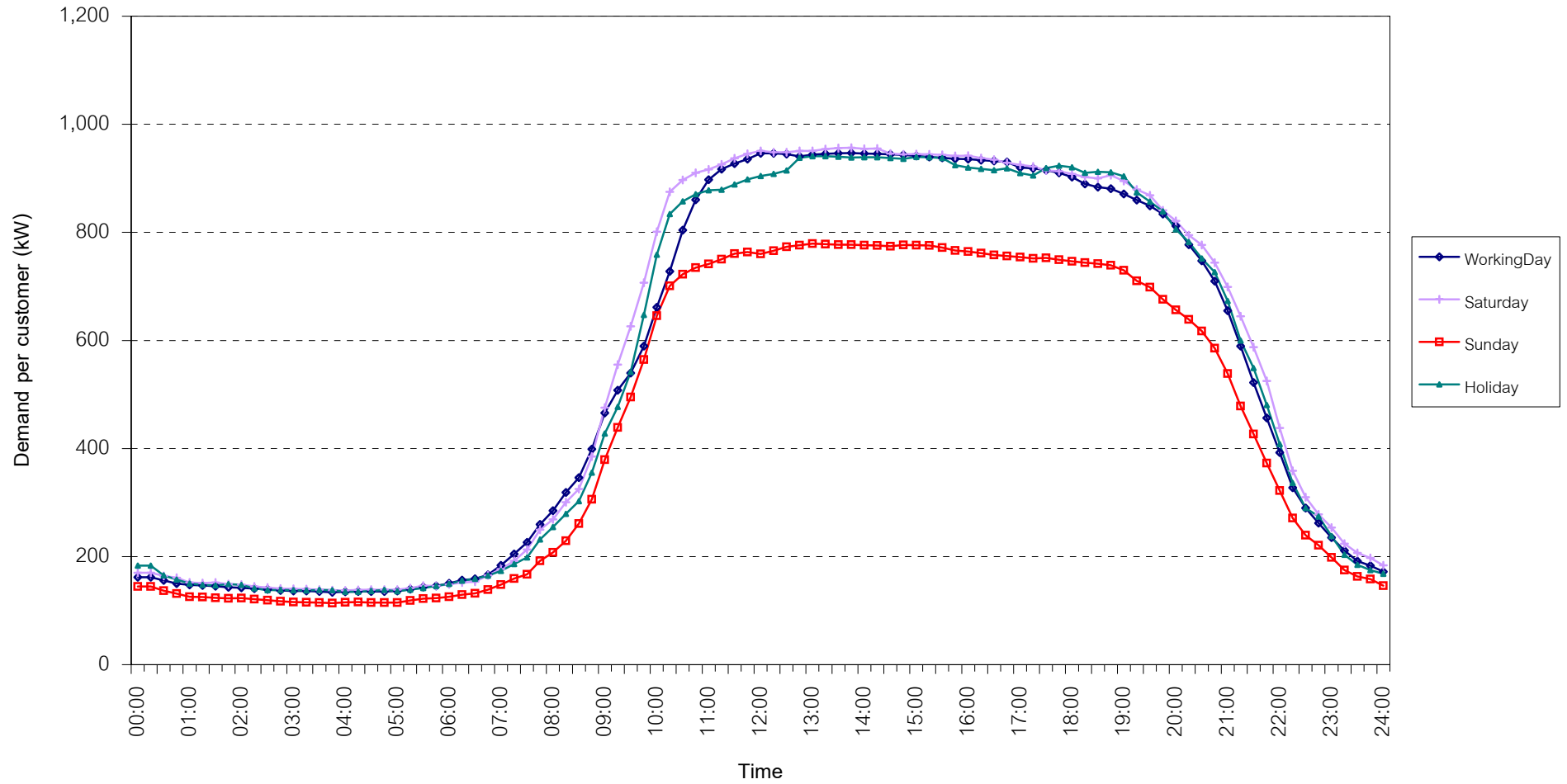


กราฟรูปที่ 14

TSIC 62 (Retail Trade) Load Profile

Date: 1 Jul, 2007 to 31 Jul, 2007

Number of sample customers = 73

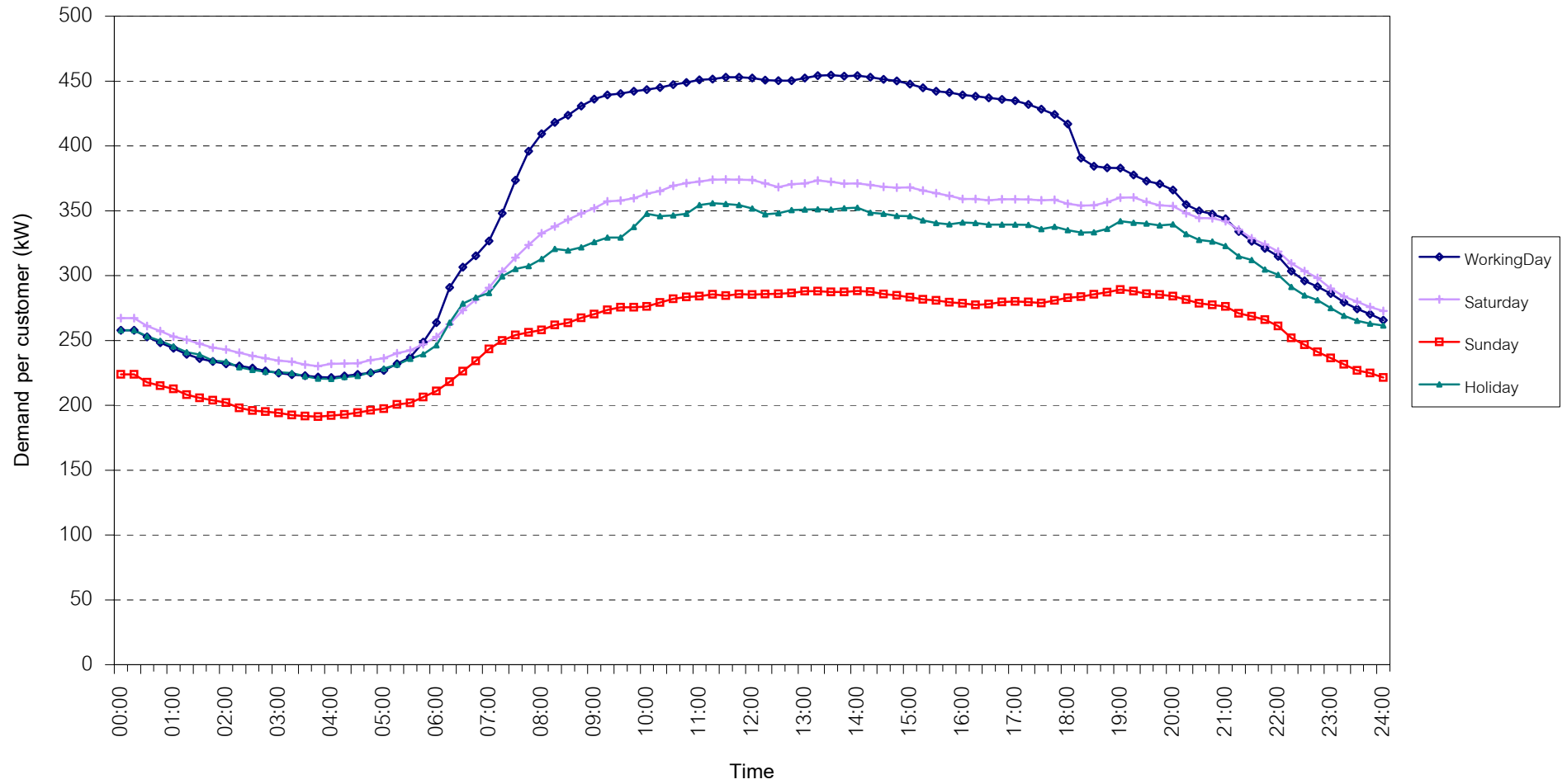


กราฟรูปที่ 15

TSIC 63 (Hotels and restaurants) Load Profile

Date: 1 Jul, 2007 to 31 Jul, 2007

Number of sample customers = 82

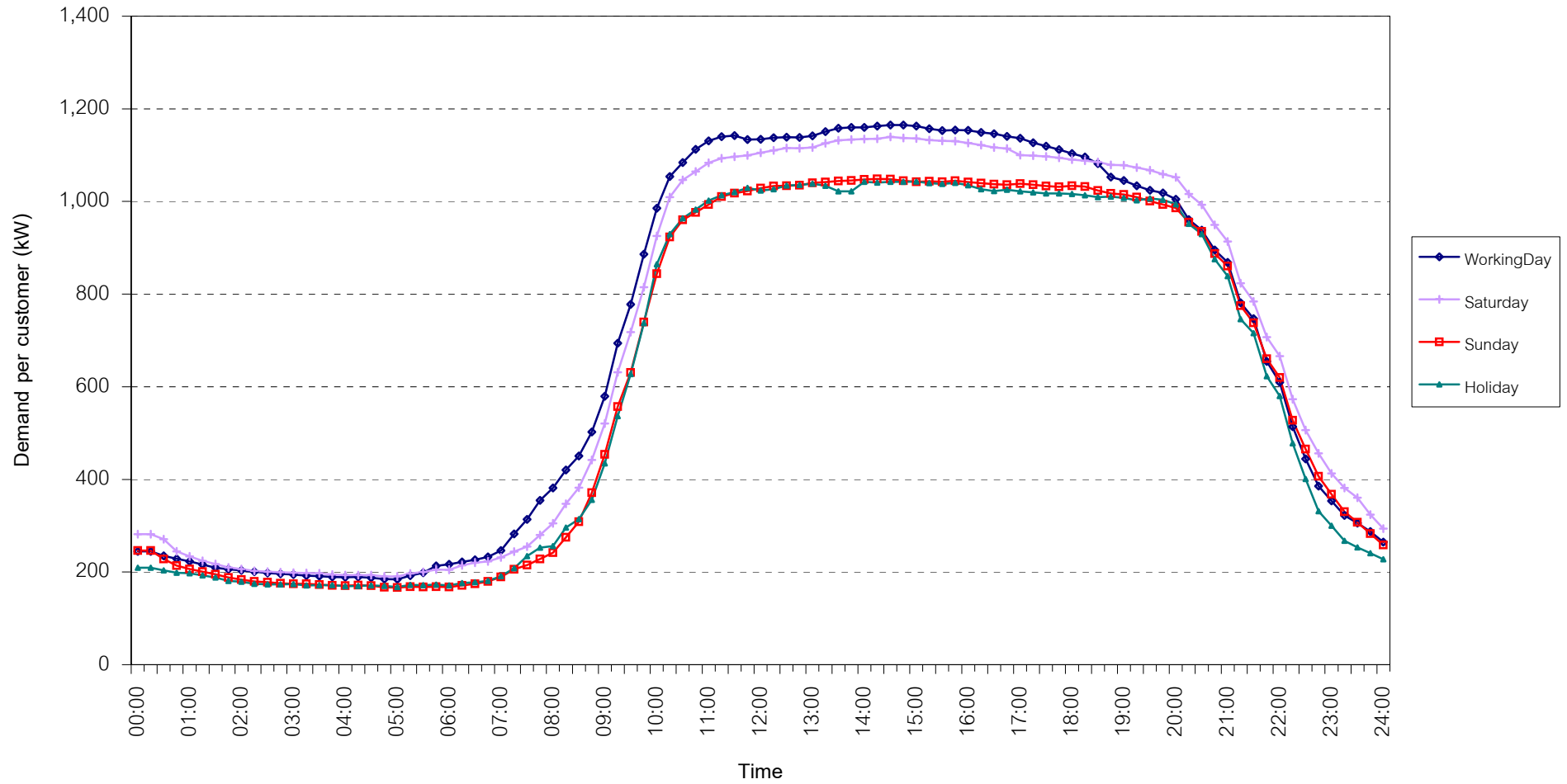


กราฟรูปที่ 16

TSIC 83 (Real Estate) Load Profile

Date: 1 Jul, 2007 to 31 Jul, 2007

Number of sample customers = 33

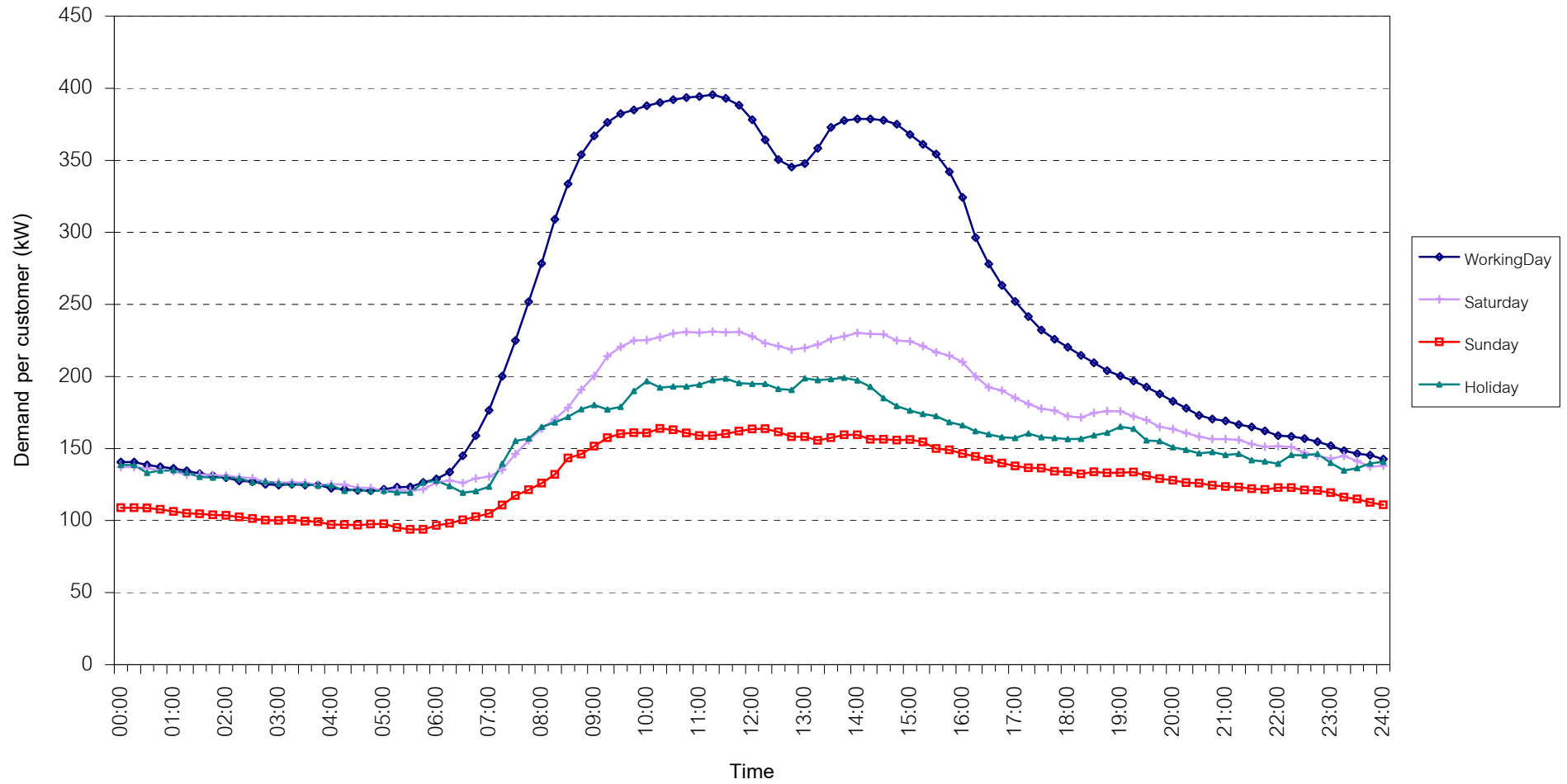


กราฟรูปที่ 17

TSIC 93 (Social Services) Load Profile

Date: 1 Jul, 2007 to 31 Jul, 2007

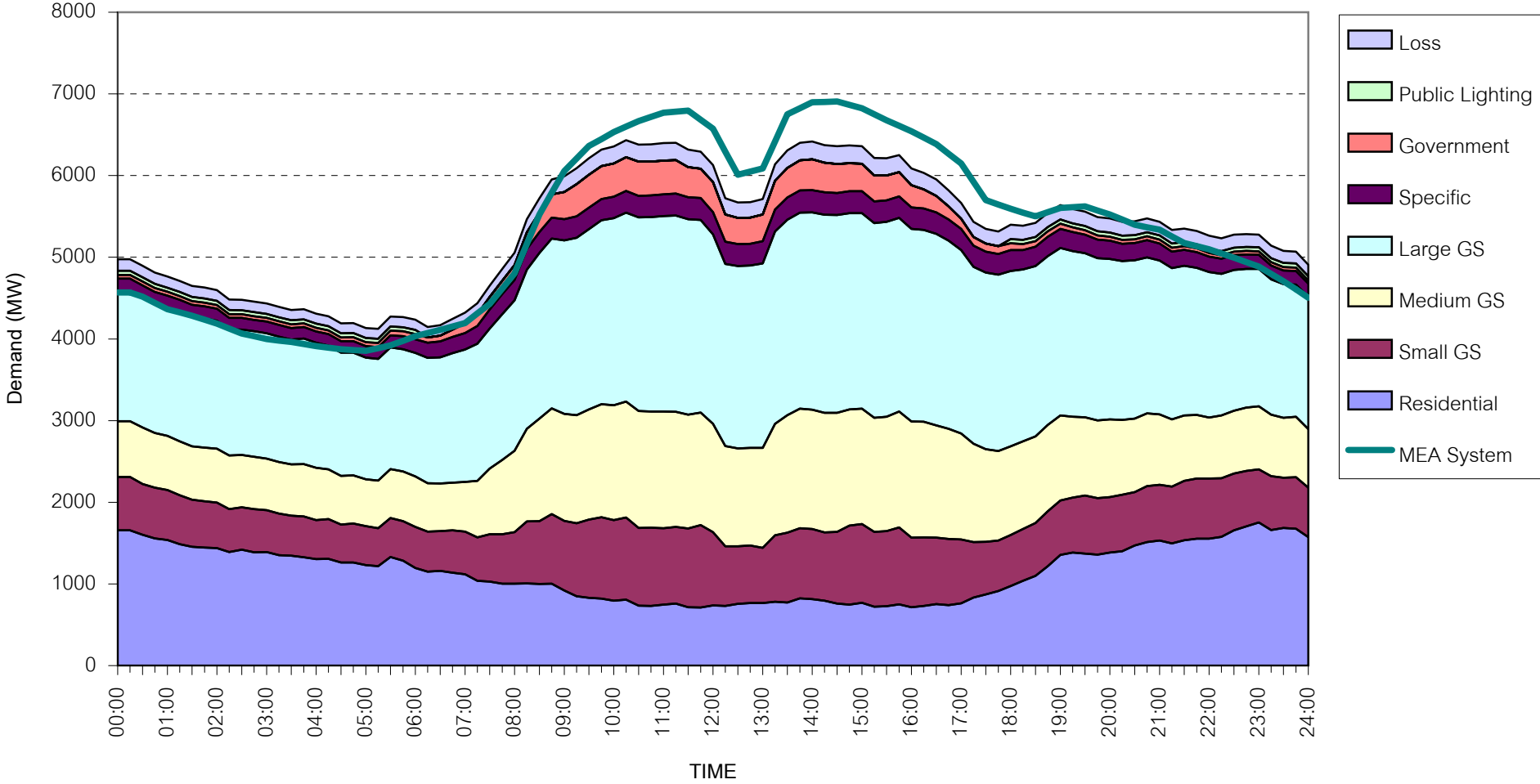
Number of sample customers = 21



กราฟรูปที่ 18

MEA's System Load Profile

Peak Day 20 July, 2007 at 14:30



กราฟรูปที่ 19