



# ข้อมูลการศึกษาลักษณะการใช้ไฟฟ้า เดือน เมษายน 2551



Table 1-1

COINCIDENT WITH LOAD RESEARCH SYSTEM'S PEAK ON April 22,2008 time 14:30 7,162.65 MW  
( MEA SYSTEM'S PEAK ON April 22,2008 time 14:30 7,584.82 MW )

CLASS	Number of Customers	Kilowatt hours	Coincident Peak (MEA System Peak at time14:30)		Coincident Peak (Load Research System Peak at time 14:30)		Sector Diversified Demand		
			MW	Contribution (%)	MW	Contribution (%)	Max MW.	Date	Time
Residential	2,216,847	900,304,509	932.19	13.01	932.19	13.01	2,243.29	19 Apr 08	22:00
Small General Service	476,202	546,699,582	1,225.96	17.12	1,225.96	17.12	1,309.36	9 Apr 08	11:45
Medium General Service	19,877	630,622,529	1,610.45	22.48	1,610.45	22.48	1,729.01	21 Apr 08	14:15
Large General Service	1,620	1,257,125,660	2,509.40	35.03	2,509.40	35.03	2,613.47	8 Apr 08	16:00
Specific Business	2,278	158,312,270	291.21	4.07	291.21	4.07	293.75	22 Apr 08	13:30
Government and non Profit organization	10,878	93,810,638	382.32	5.34	382.32	5.34	471.86	22 Apr 08	10:30
Public Lighting	-	19,064,076	0.00	0.00	0.00	0.00	53.27	-	-
Loss	-	102,617,598	211.13	2.95	211.13	2.95	211.13	22 Apr 08	14:30
TOTAL	2,727,702	3,708,556,862	7,162.65	100	7,162.65	100	7,162.65	22 Apr 08	14:30



Table 1-2

Number of sample customers on April, 2008

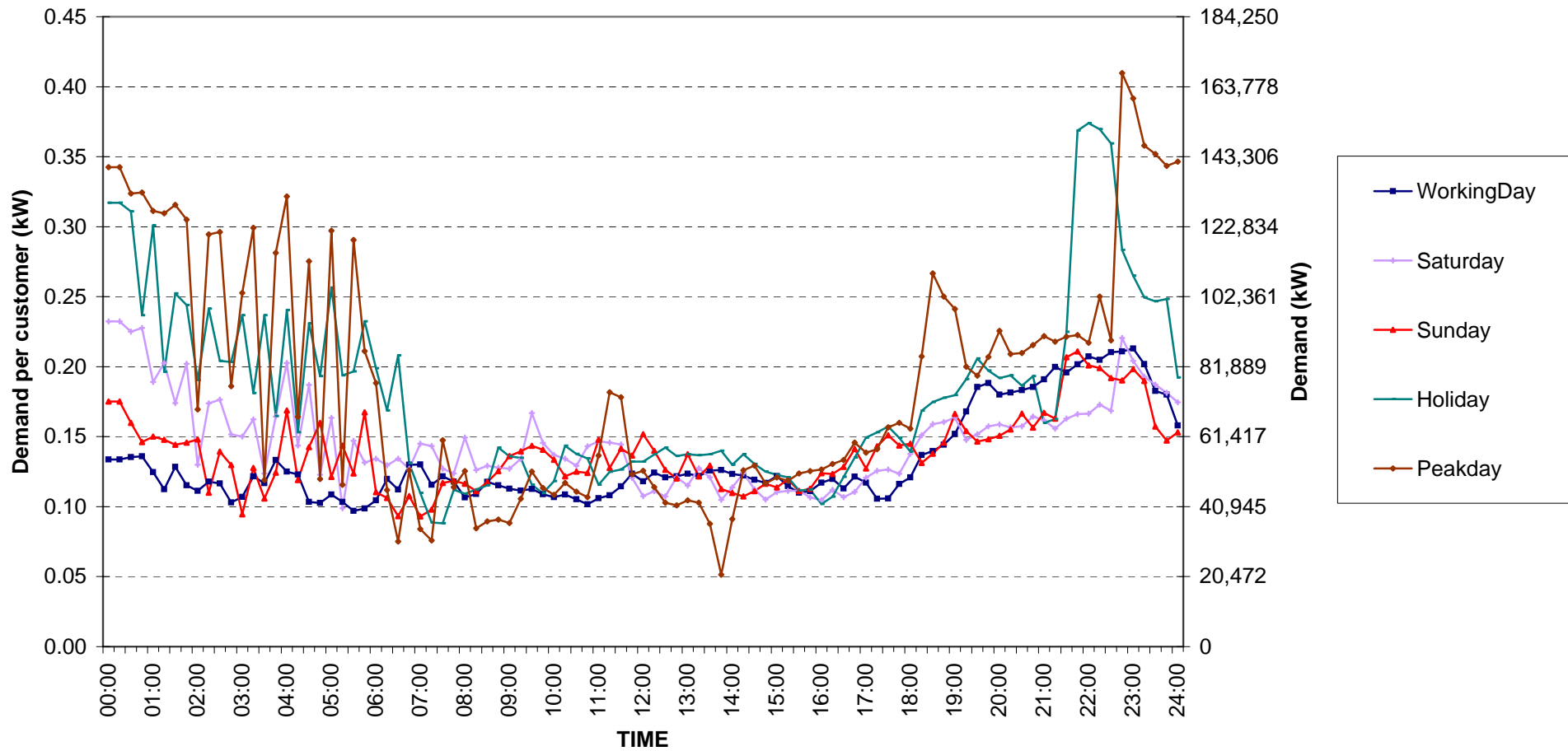
CLASS	Number of sample customers (Target)	Number of sample customers (Collected)
Residential	191	191
Small General Service	297	297
Medium General Service	163	163
Large General Service	328	328
Specific Business	76	76
Government and Non-profit Organization	68	68
TOTAL	1,123	1,123



## Residential ( Energy Consumption less than 150 kWh per month )

Date: 1 Apr, 2008 to 30 Apr, 2008

Number of sample customers = 10



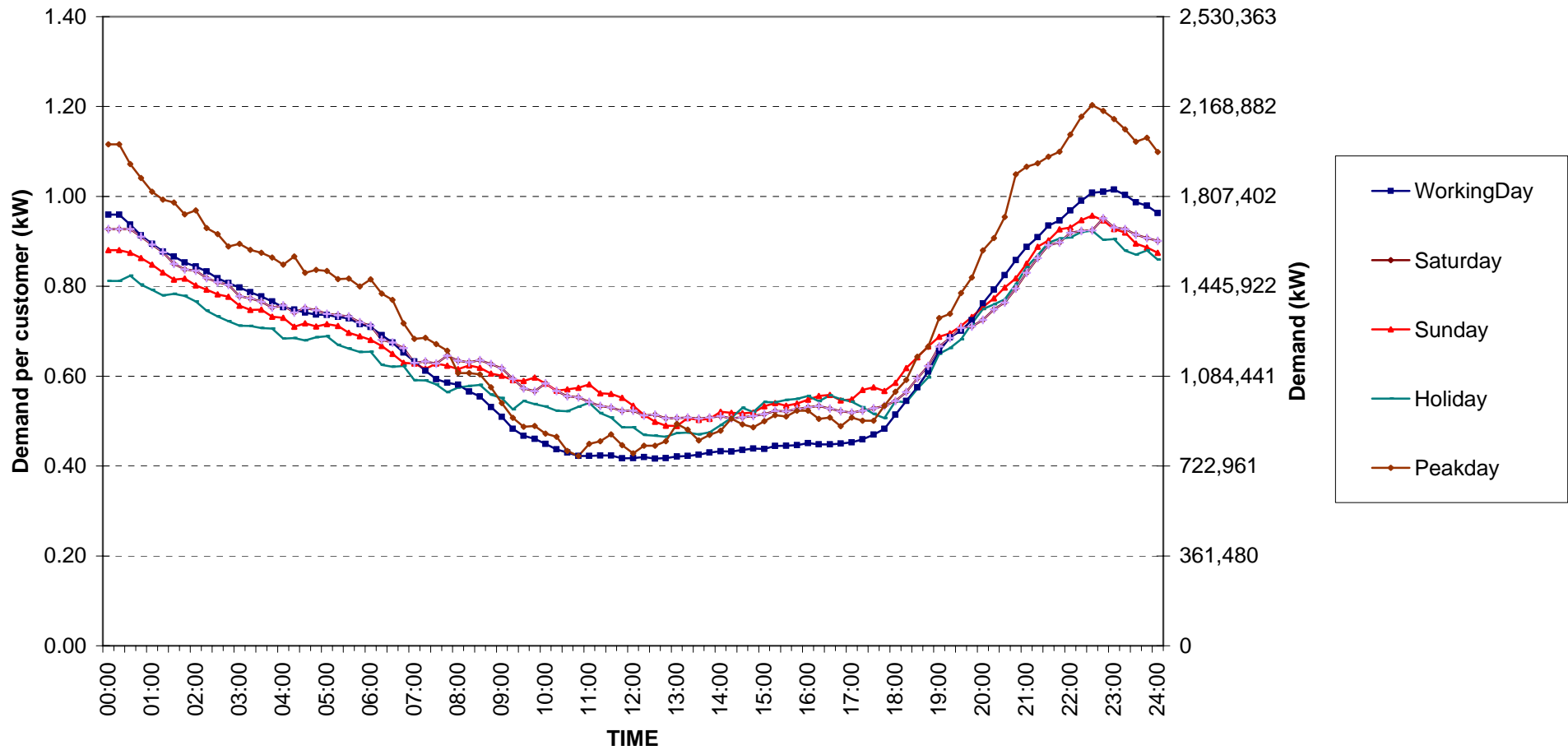
กราฟรูปที่ 1



## Residential ( Energy Consumption more than 150 kWh per month )

Date: 1 Apr, 2008 to 30 Apr, 2008

Number of sample customers = 181



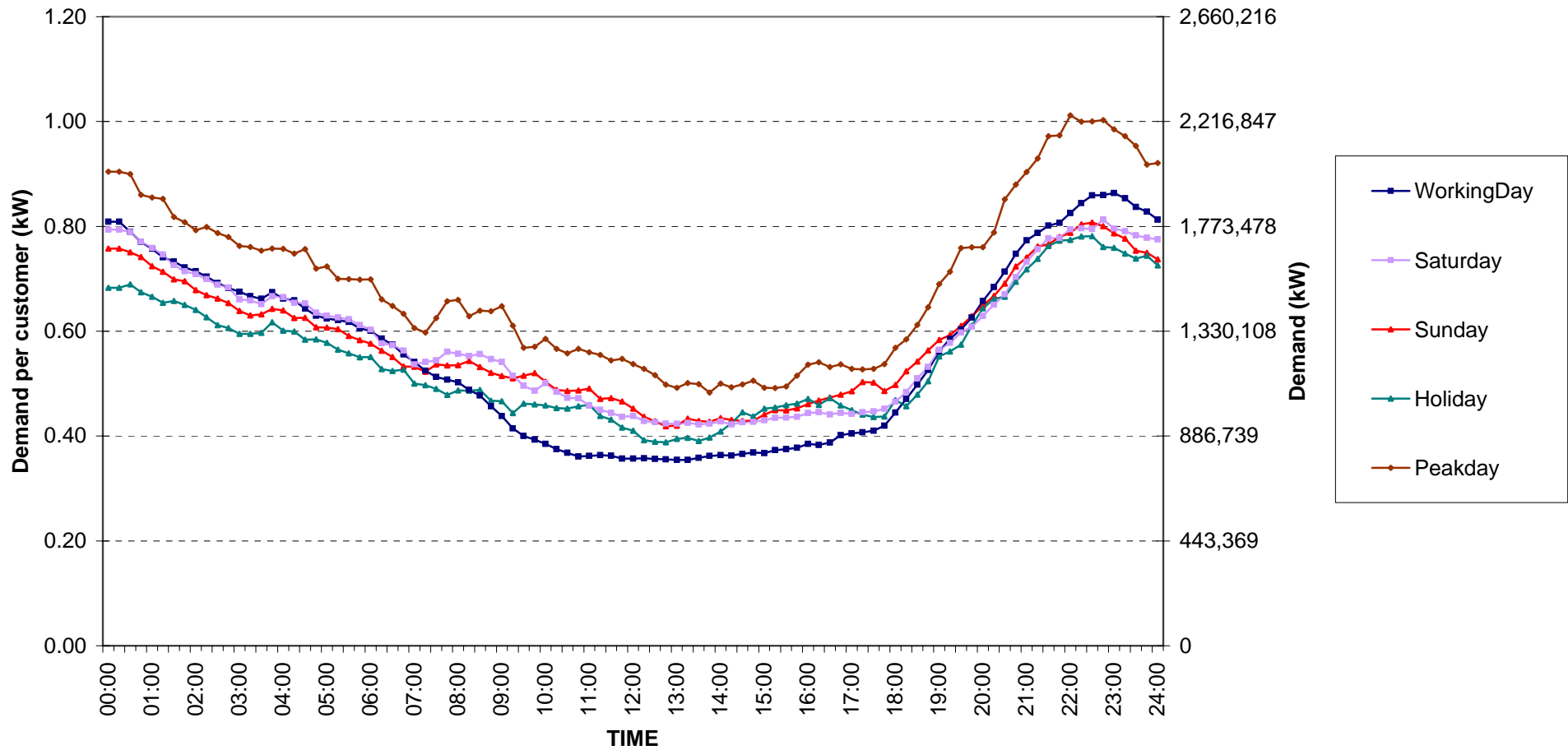
กราฟรูปที่ 2



## Residential Load Profile

Date: 1 Apr, 2008 to 30 Apr, 2008

Number of sample customers = 191



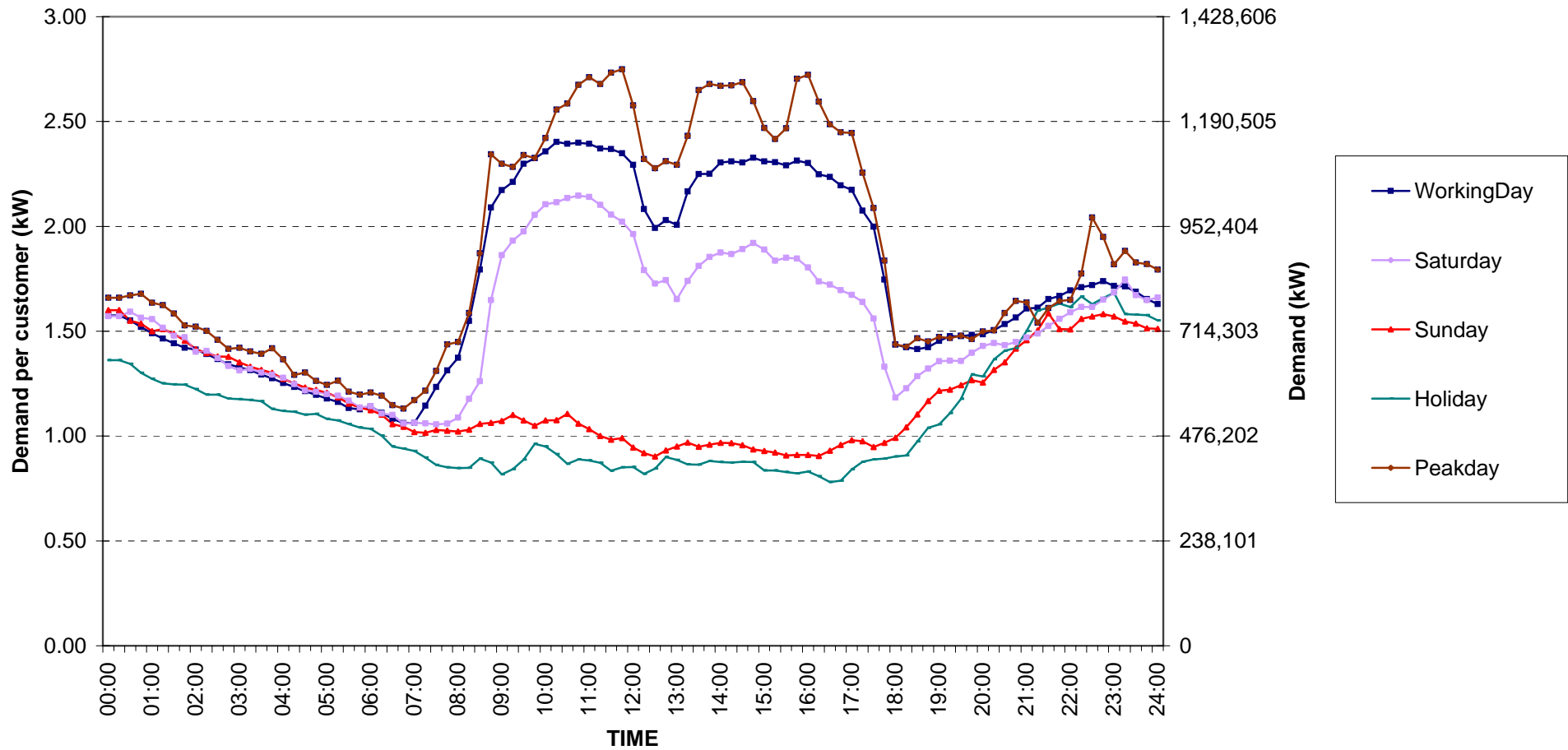
กราฟรูปที่ 3



Small General Services Load Profile

Date: 1 Apr, 2008 to 30 Apr, 2008

Number of sample customers = 297



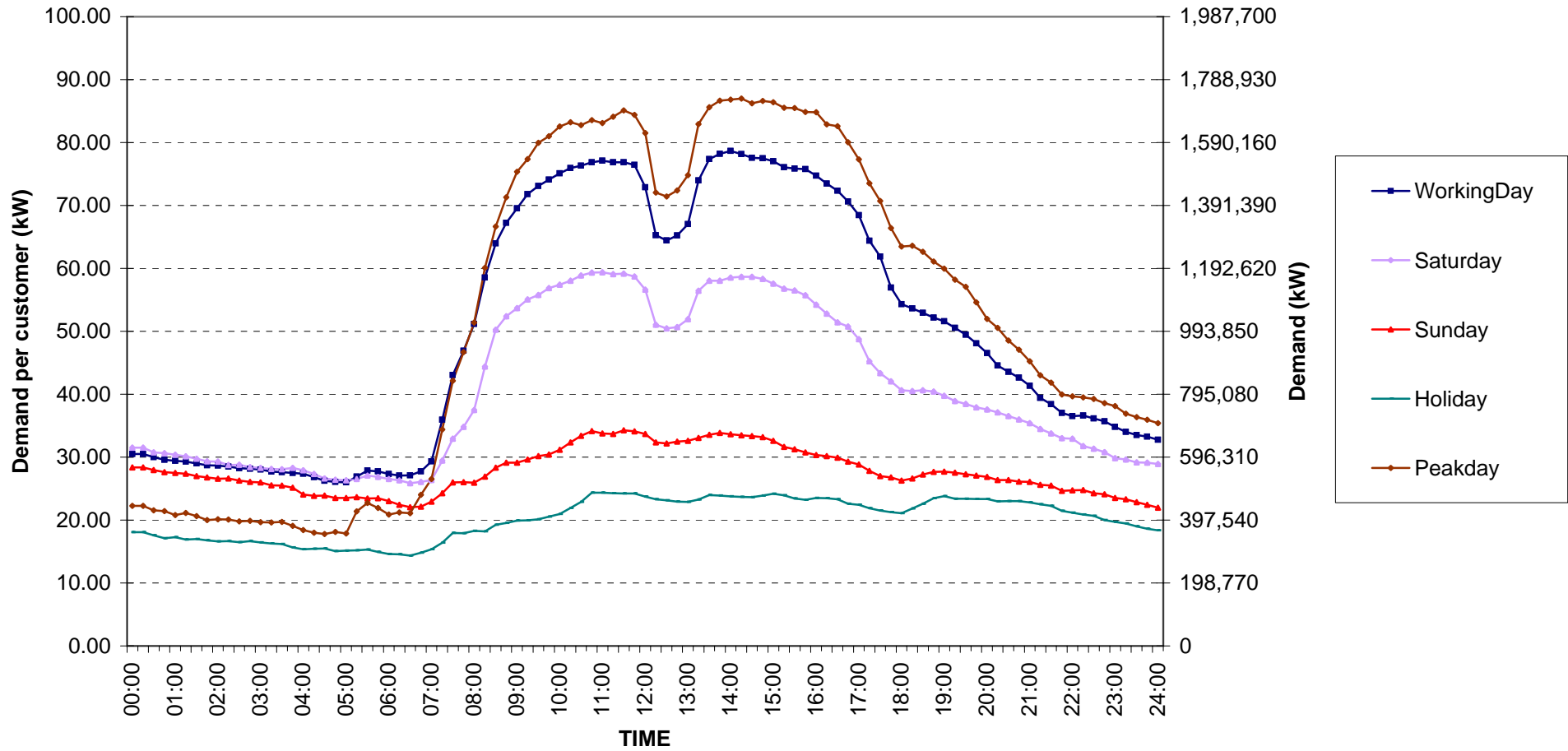
กราฟรูปที่ 4



Medium General Services Load Profile

Date: 1 Apr, 2008 to 30 Apr, 2008

Number of sample customers = 163



กราฟรูปที่ 5

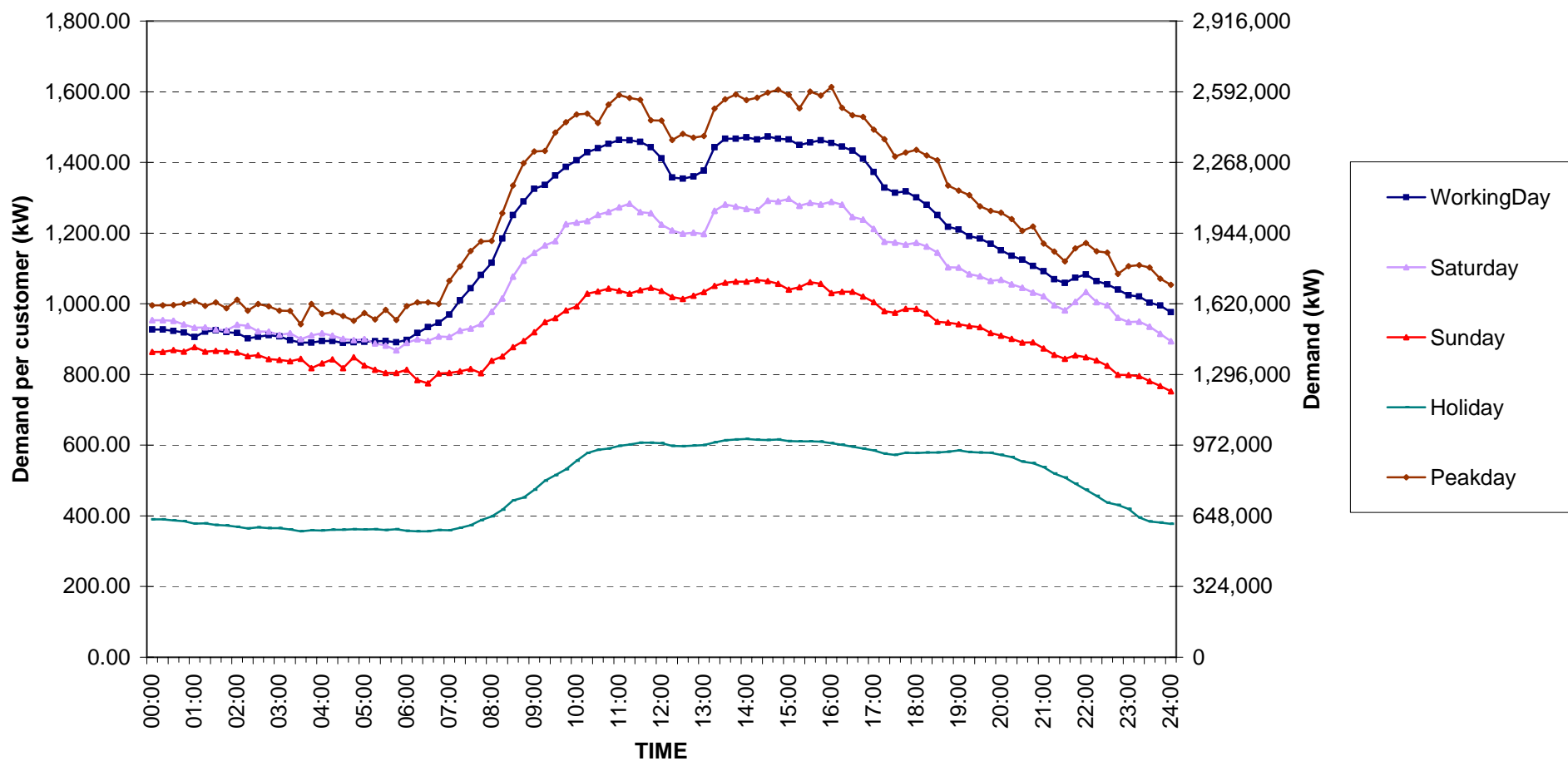




### Large General Services Load Profile

Date: 1 Apr, 2008 to 30 Apr, 2008

Number of sample customers = 328



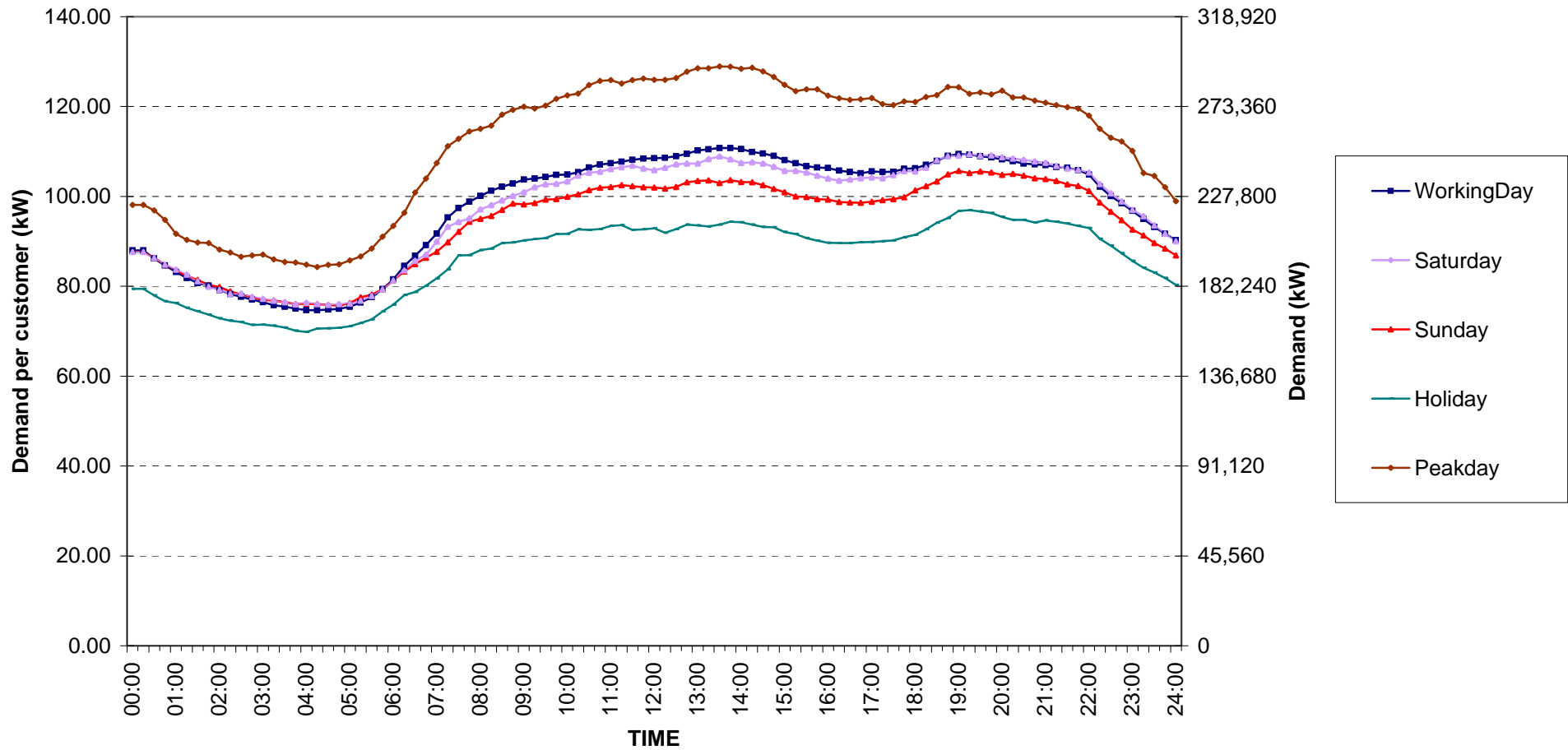
กราฟรูปที่ 6



## Specific Business Load Profile

Date: 1 Apr, 2008 to 30 Apr, 2008

Number of sample customers = 76



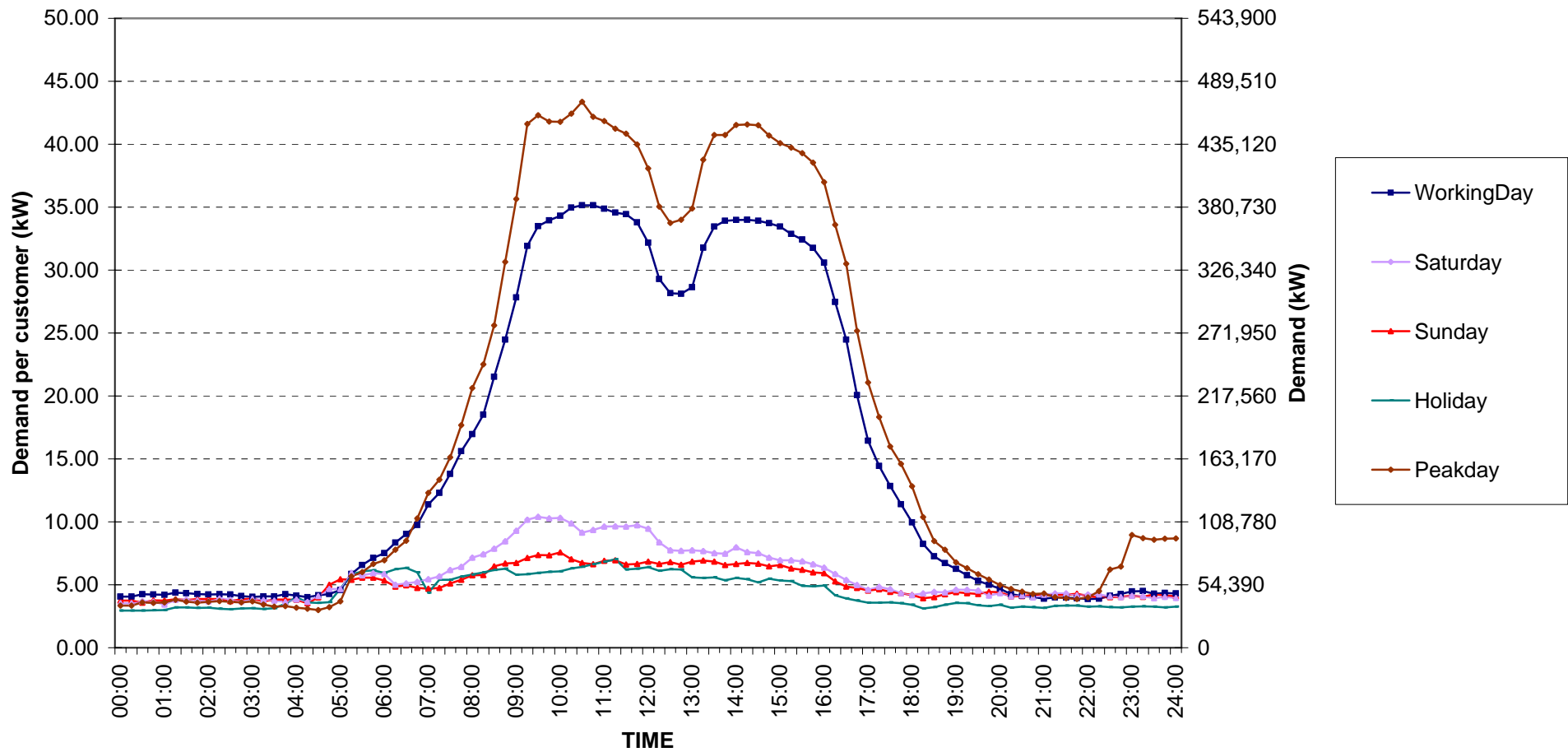
กราฟรูปที่ 7



Government institutions and non-profit organizations Load Profile

Date: 1 Apr, 2008 to 30 Apr, 2008

Number of sample customers = 68



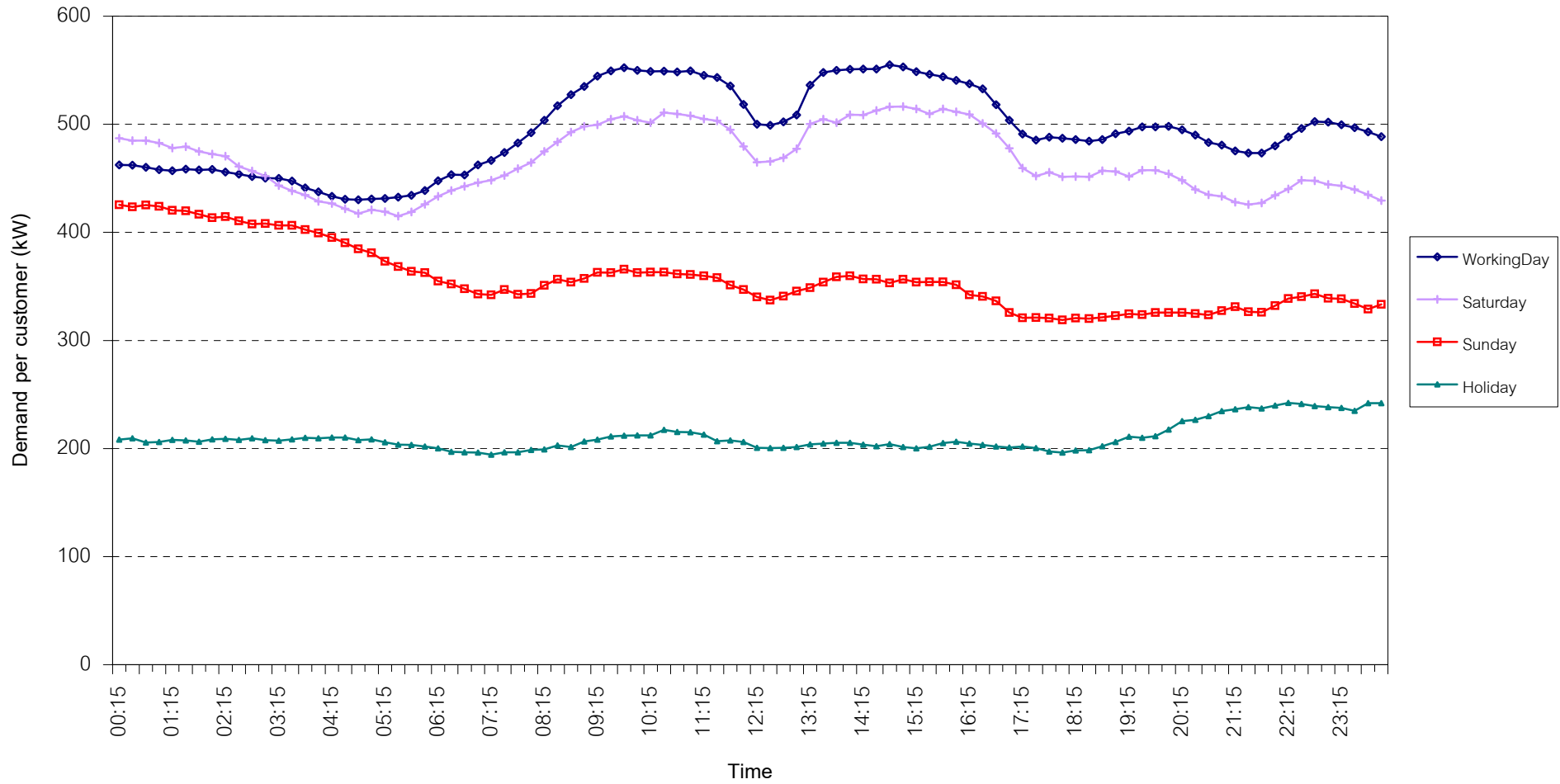
กราฟรูปที่ 8



## TSIC 31 (Food Processing) Load Profile

Date: 1 Apr, 2008 to 30 Apr, 2008

Number of sample customers = 30



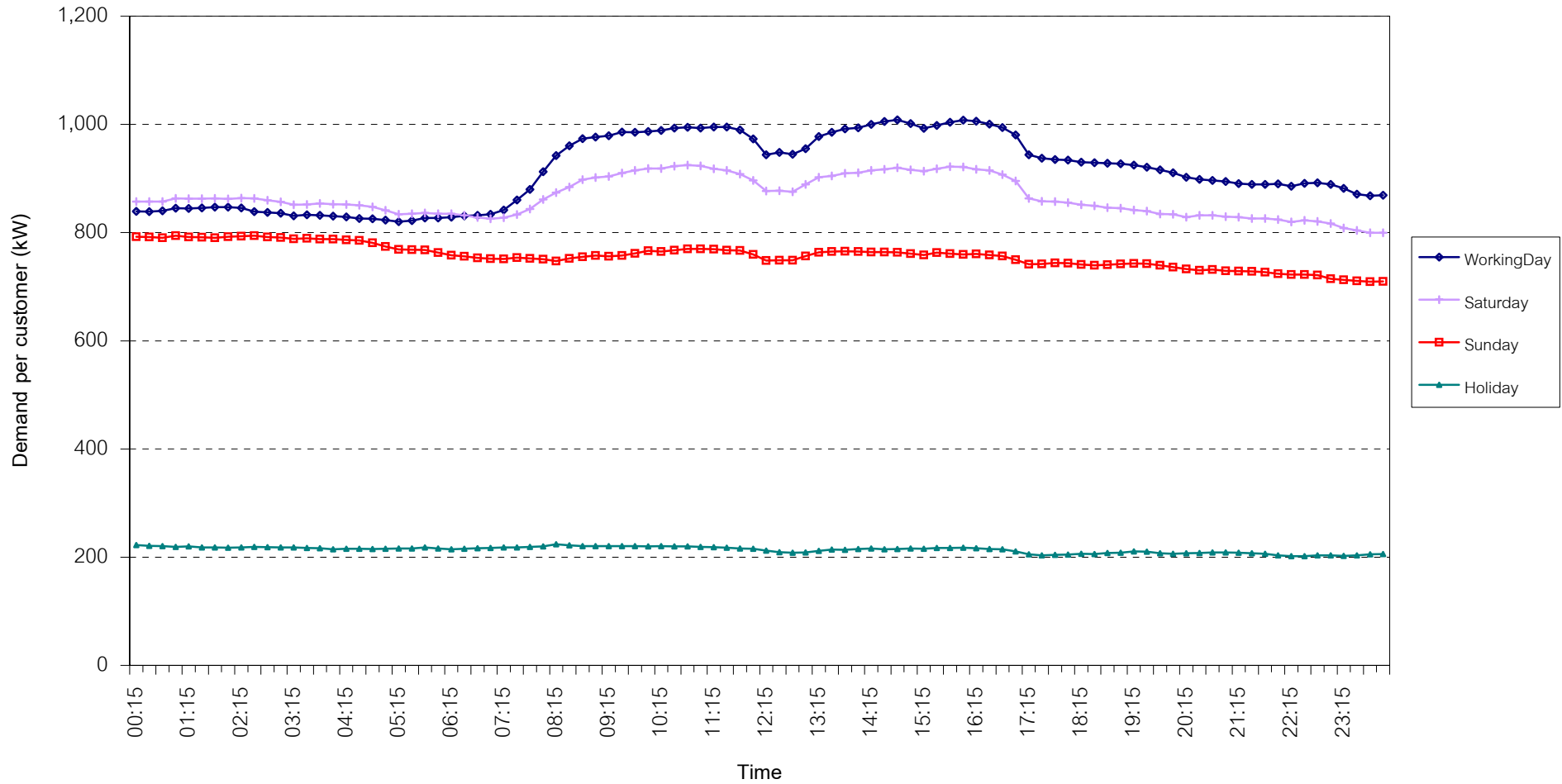
กราฟรูปที่ 9



## TSIC 32 (Textiles) Load Profile

Date: 1 Apr, 2008 to 30 Apr, 2008

Number of sample customers = 63



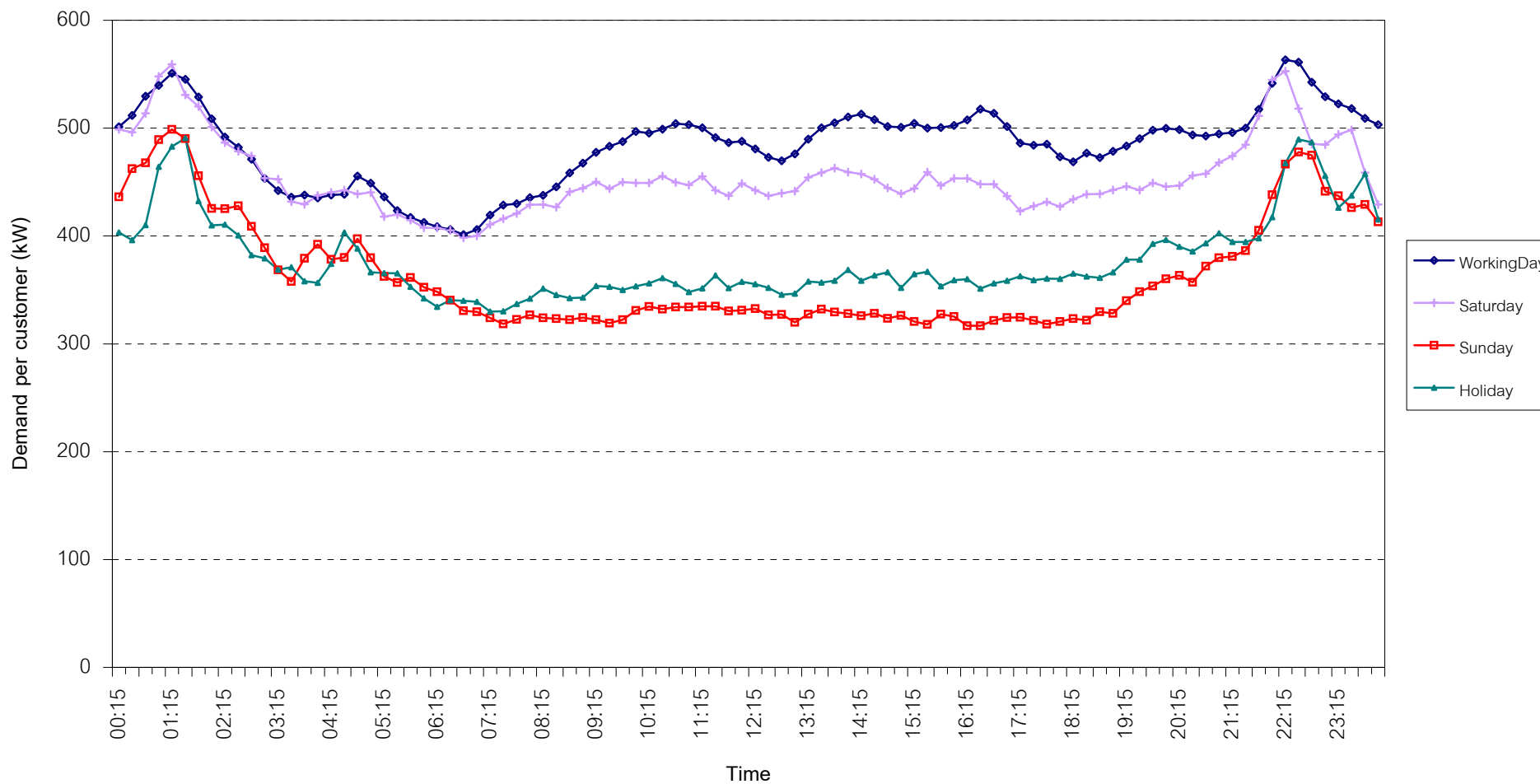
กราฟรูปที่ 10



## TSIC 34 (Paper & Printing) Load Profile

Date: 1 Apr, 2008 to 30 Apr, 2008

Number of sample customers = 10



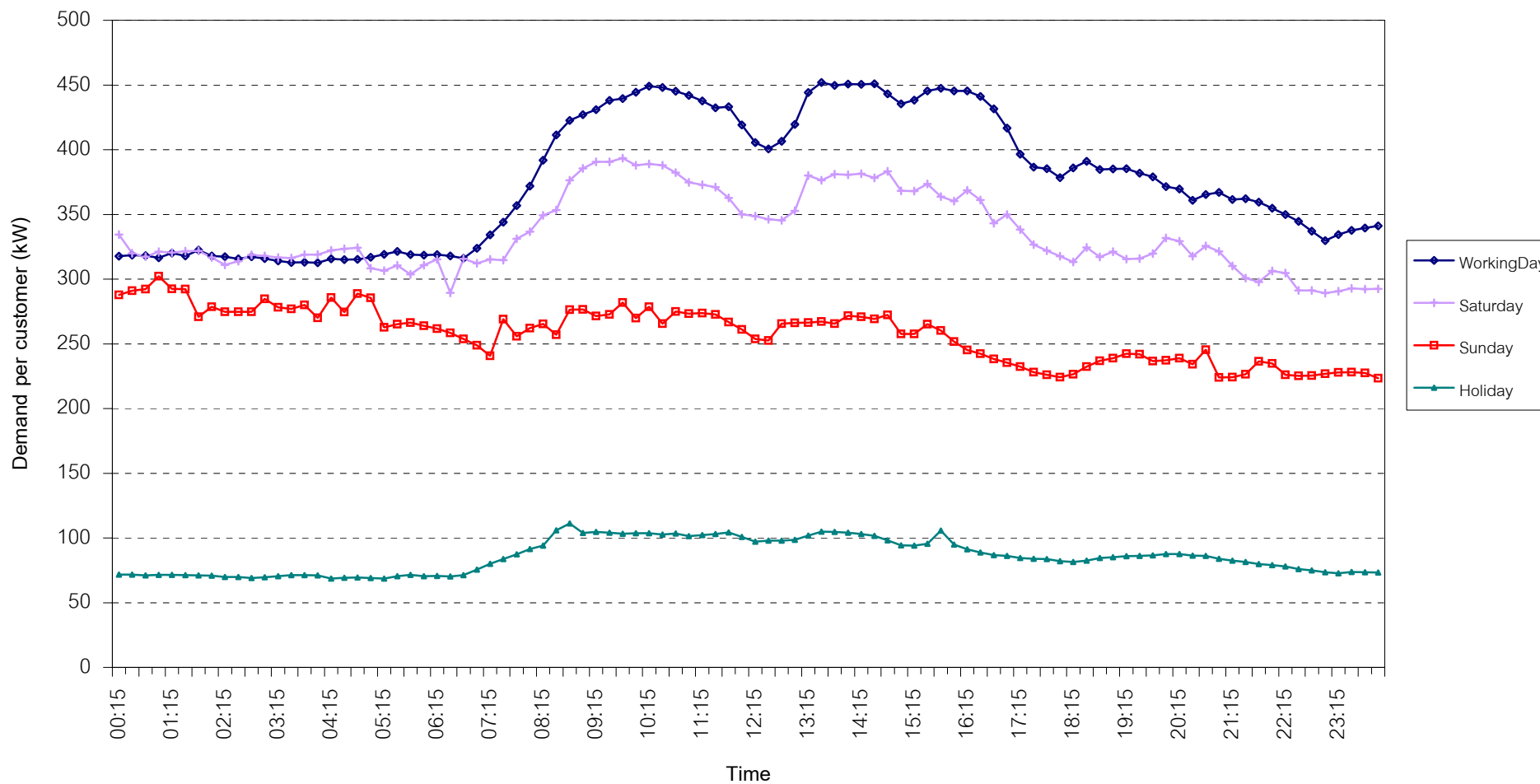
กราฟรูปที่ 11



## TSIC 35 (Chemical & Petroleum) Load Profile

Date: 1 Apr, 2008 to 30 Apr, 2008

Number of sample customers = 62



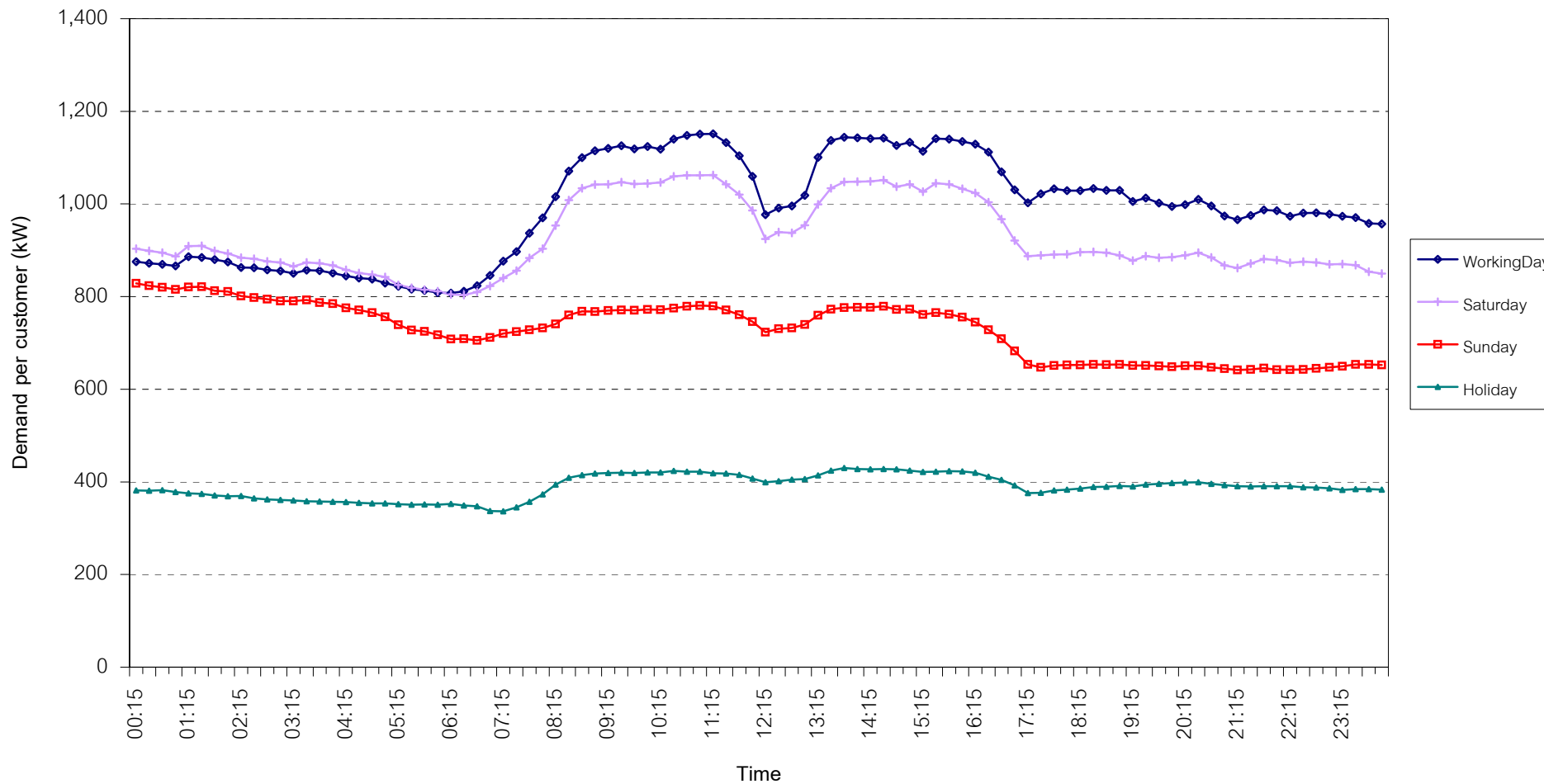
กราฟรูปที่ 12



## TSIC 38 (Fabricated Metal Products) Load Profile

Date: 1 Apr, 2008 to 30 Apr, 2008

Number of sample customers = 61



กราฟรูปที่ 13

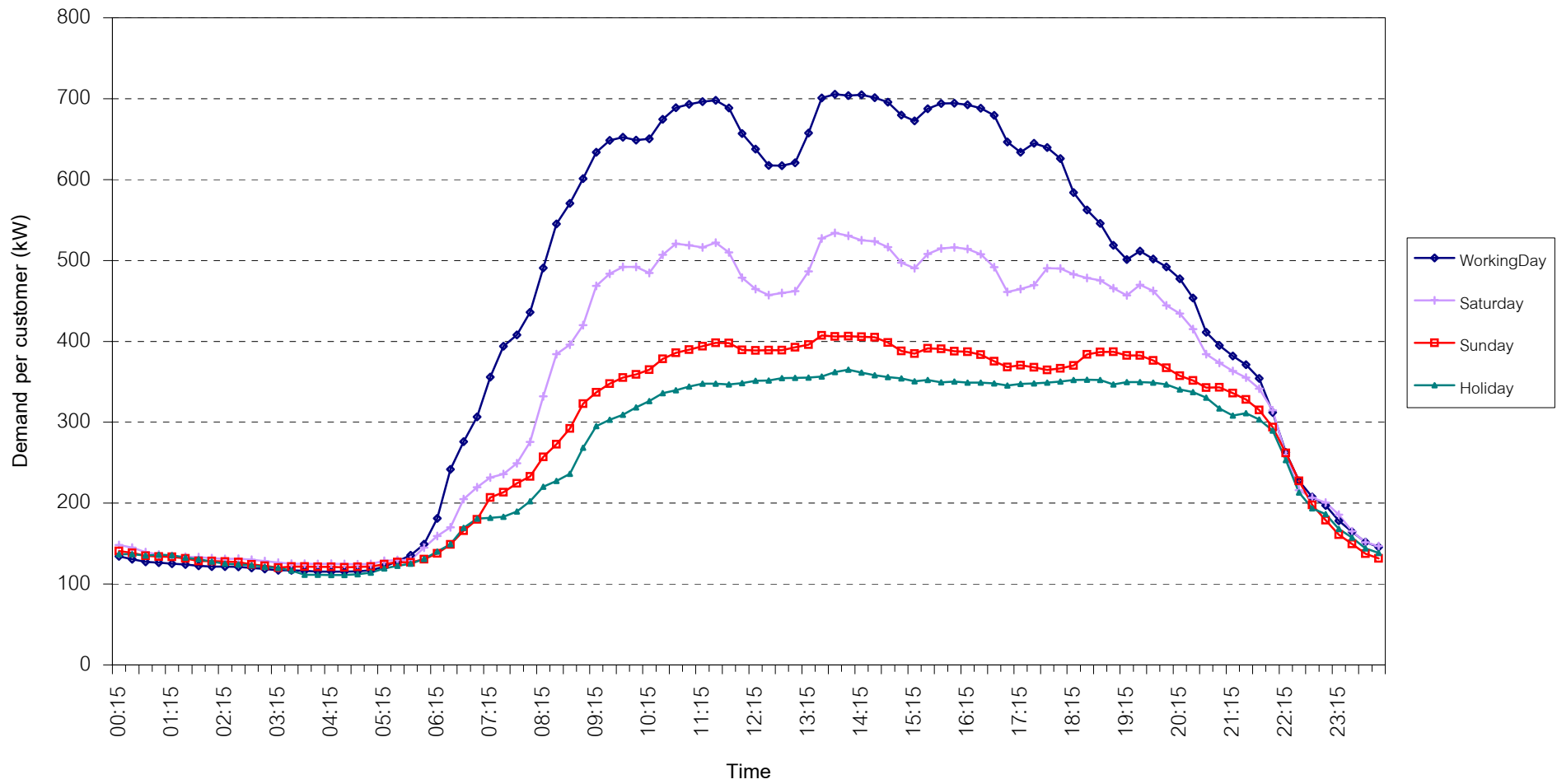




## TSIC 61 (Wholesale Trade) Load Profile

Date: 1 Apr, 2008 to 30 Apr, 2008

Number of sample customers = 8



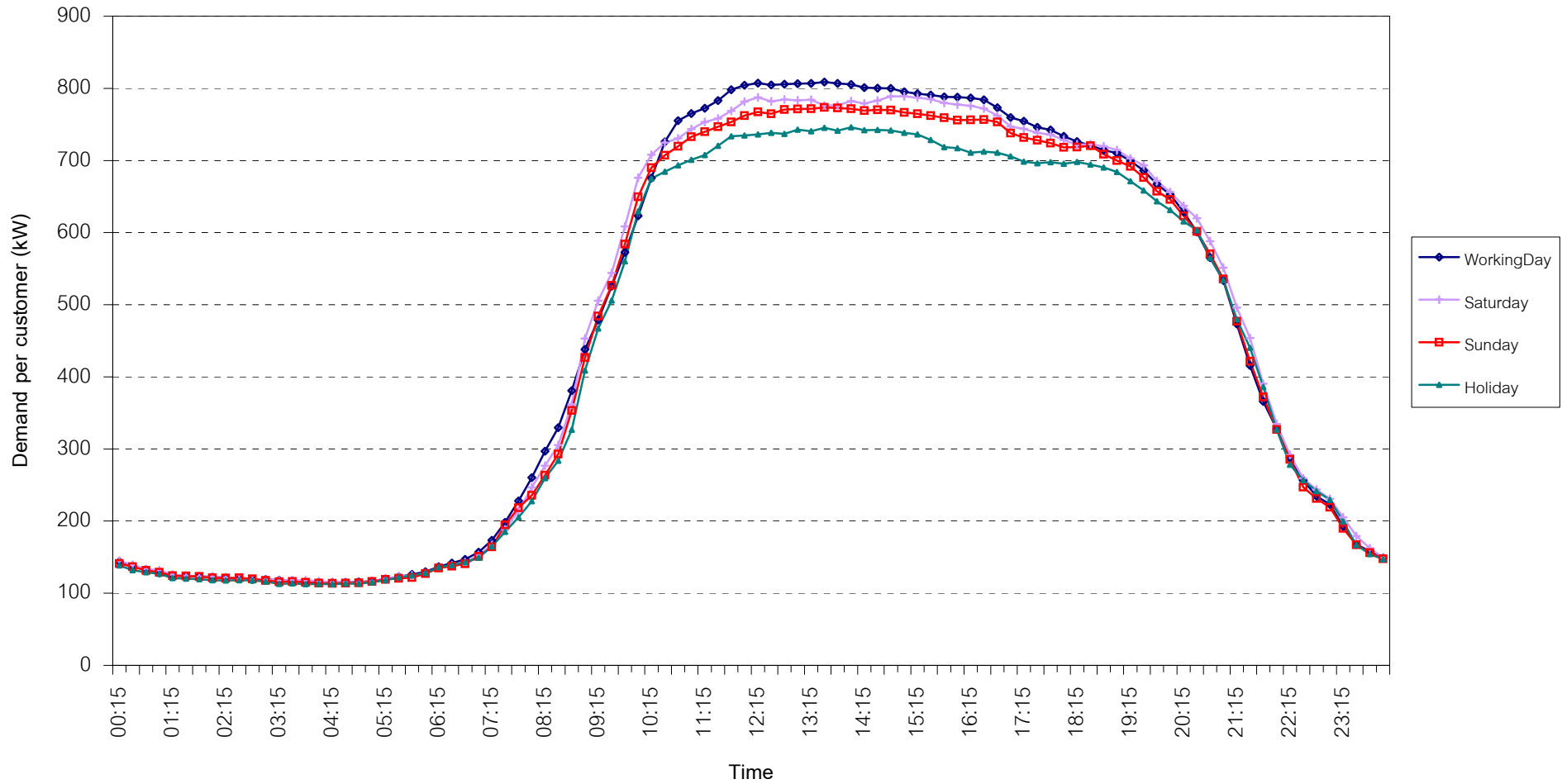
กราฟรูปที่ 14



## TSIC 62 (Retail Trade) Load Profile

Date: 1 Apr, 2008 to 30 Apr, 2008

Number of sample customers = 73



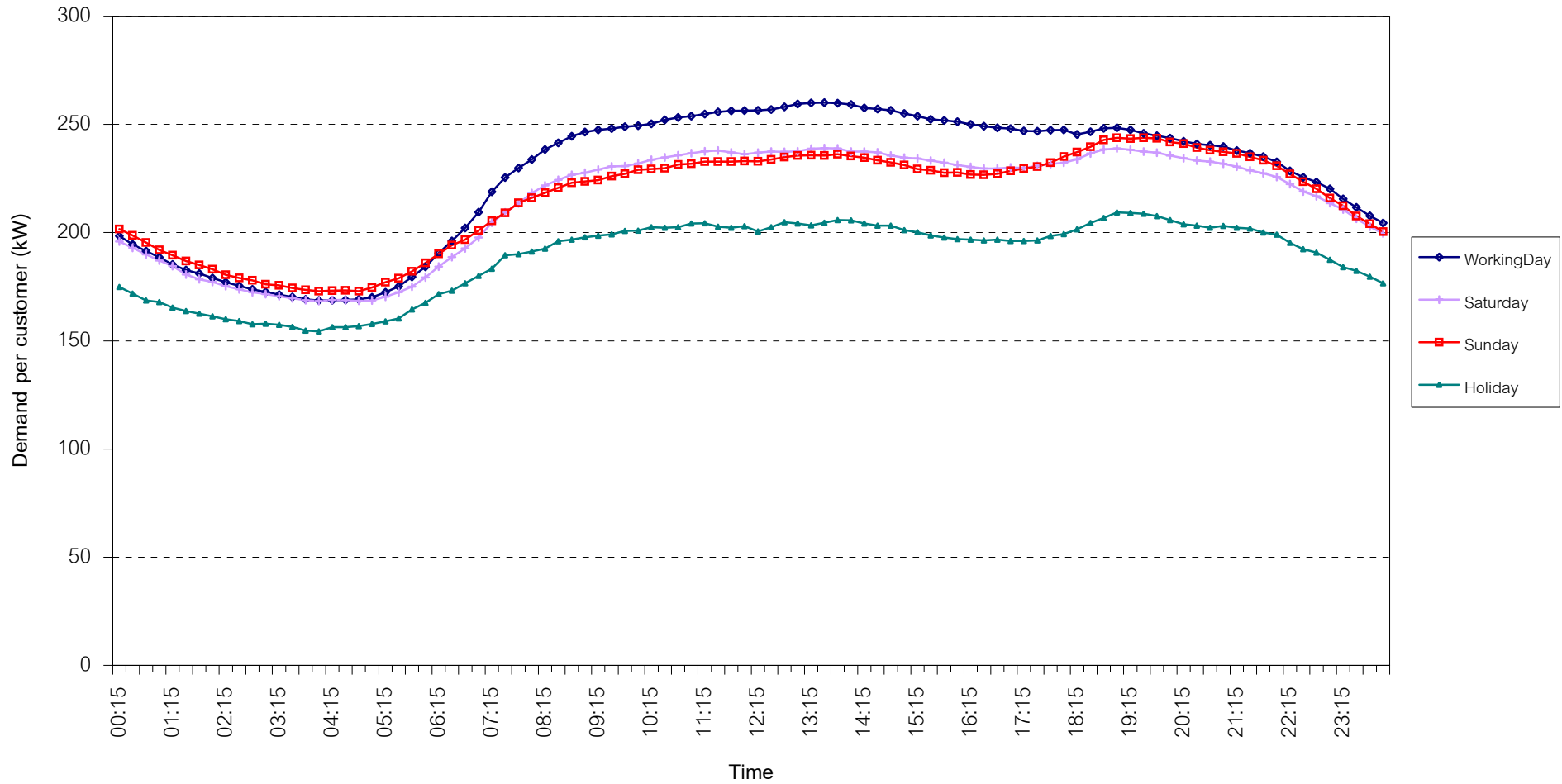
กราฟรูปที่ 15



## TSIC 63 (Hotels and restaurants) Load Profile

Date: 1 Apr, 2008 to 30 Apr, 2008

Number of sample customers = 82



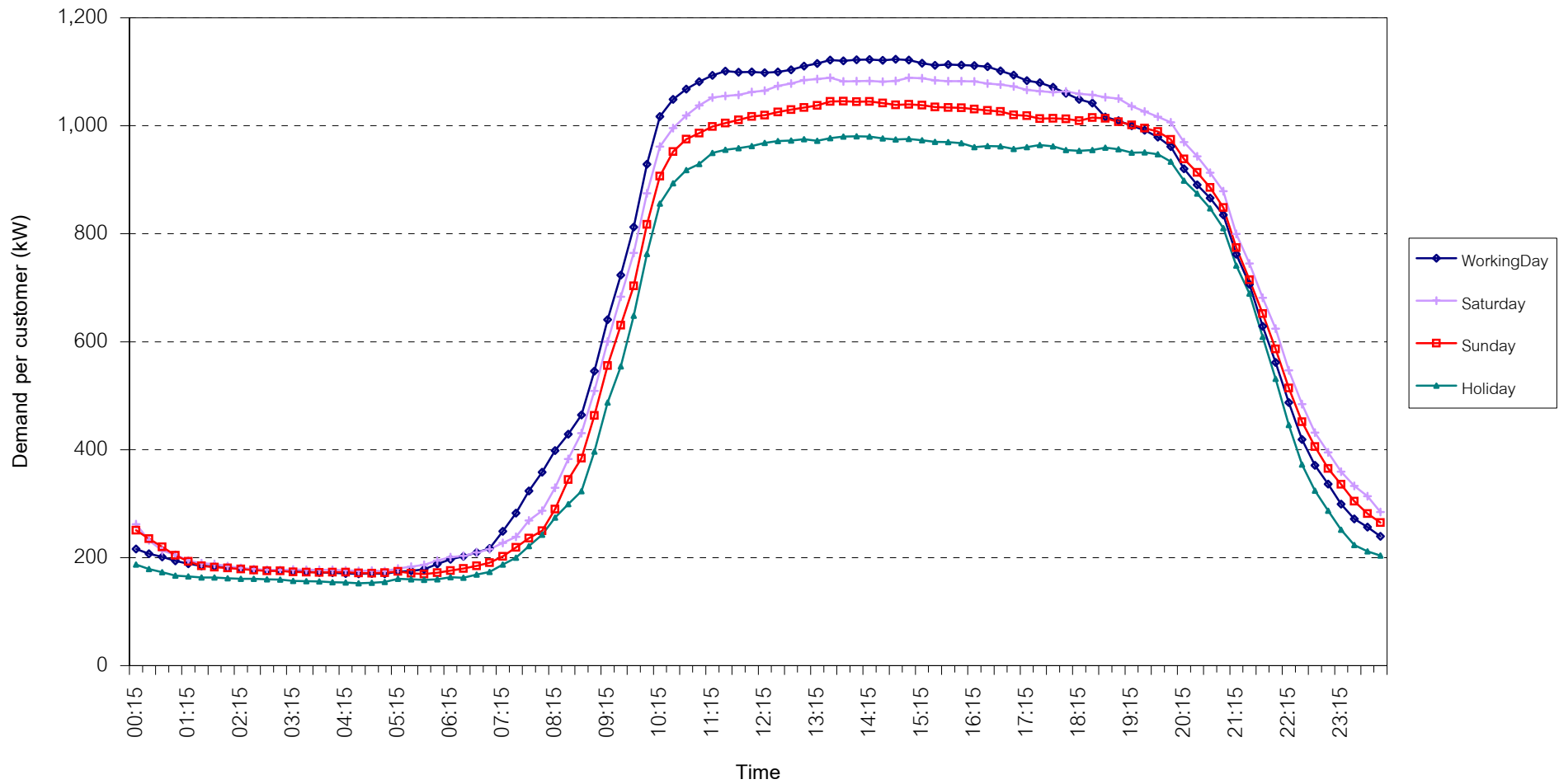
กราฟรูปที่ 16



## TSIC 83 (Real Estate) Load Profile

Date: 1 Apr, 2008 to 30 Apr, 2008

Number of sample customers = 33



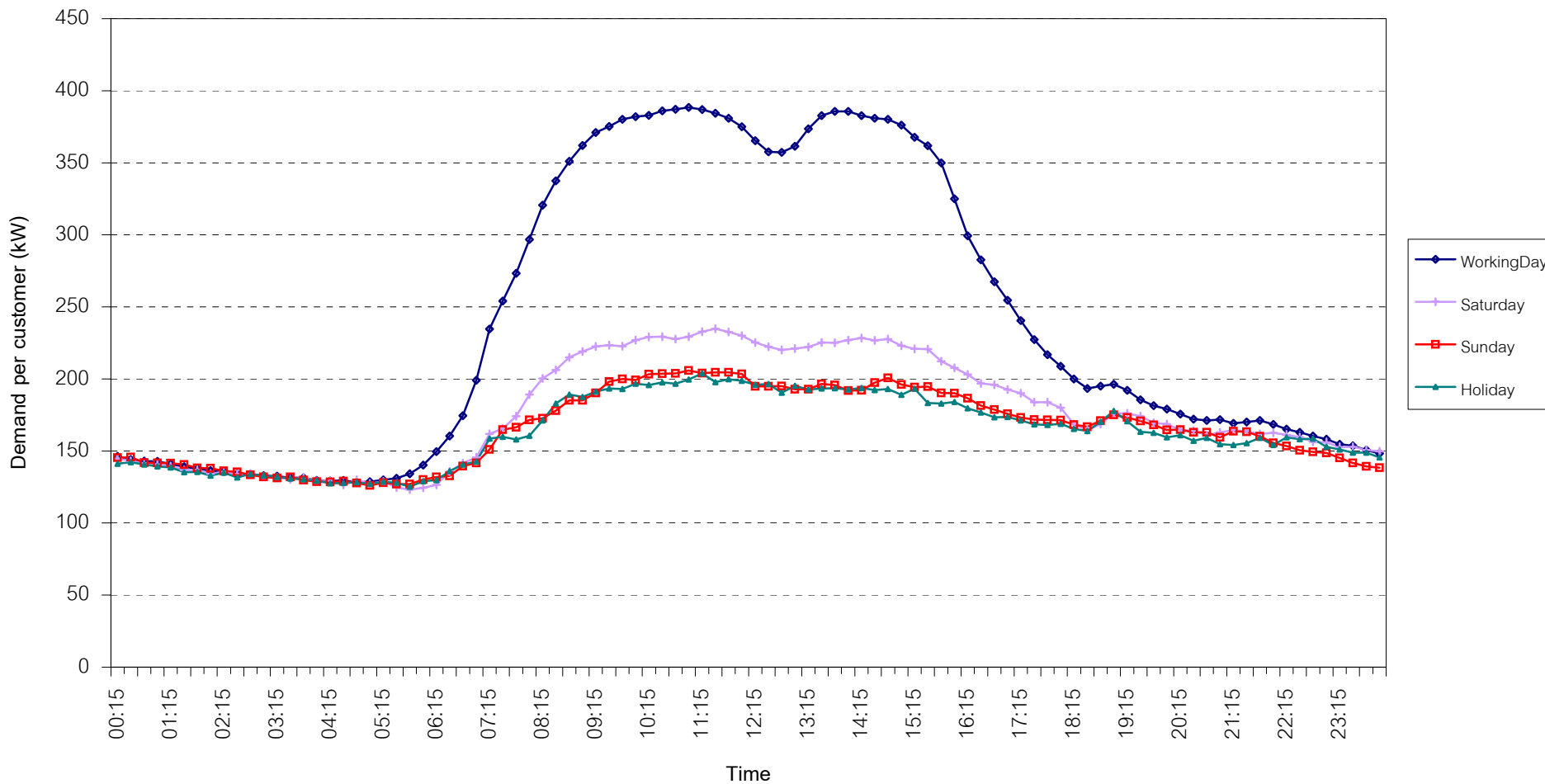
กราฟรูปที่ 17



## TSIC 93 (Social Services) Load Profile

Date: 1 Apr, 2008 to 30 Apr, 2008

Number of sample customers = 21

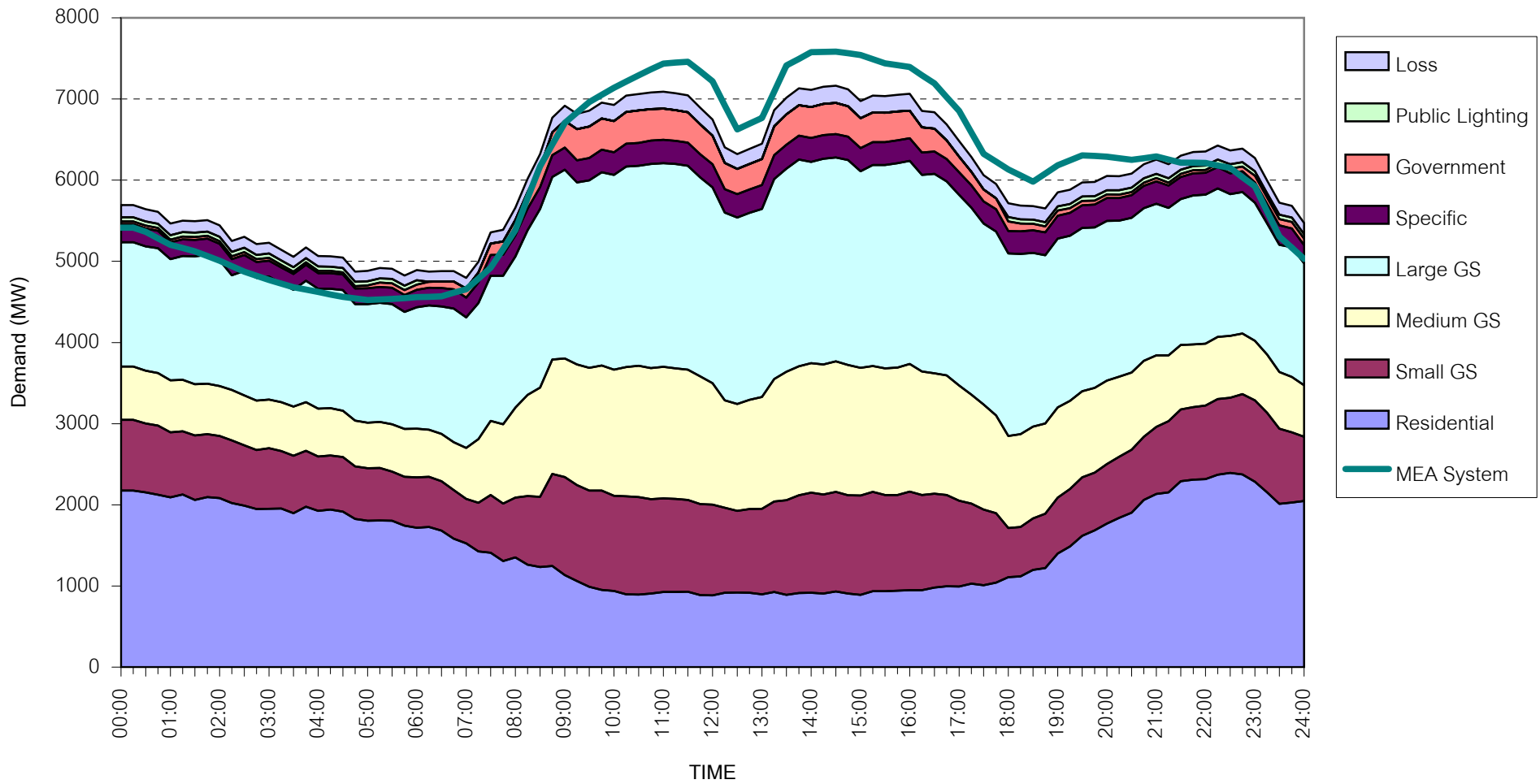


กราฟรูปที่ 18



## MEA's System Load Profile

Peak Day 22 April, 2008 at 14:30



กราฟรูปที่ 19