



# ข้อมูลการศึกษาลักษณะการใช้ไฟฟ้า

เดือน สิงหาคม 2550



Table 1-1

COINCIDENT WITH SYSTEM LOAD RESEARCH SYSTEM'S PEAK ON August 14,2007 time 14:15 6,763.86 MW

( MEA SYSTEM'S PEAK ON August 14,2007 time 14:30 7,044.28 MW )

CLASS	Number of Customers	Kilowatt hours	Coincident Peak at time 14:30 (MEA System Peak)		Coincident Peak at time 14:15 (Load Research System Peak)		Sector Diversified Demand		
			MW	Contribution (%)	MW	Contribution (%)	Max MW.	Date	Time
Residential	2,170,461	800,724,325	696.45	10.38	707.15	10.45	2,088.76	14 Aug 07	22:45
Small General Service	470,551	526,297,088	1,074.05	16.01	1,117.78	16.53	1,220.79	20 Aug 07	11:15
Medium General Service	19,935	687,958,214	1,580.10	23.55	1,579.05	23.35	1,640.14	28 Aug 07	14:45
Large General Service	1,588	1,333,333,686	2,481.81	36.99	2,491.05	36.83	2,552.95	16 Aug 07	11:15
Specific Business	2,201	154,121,305	259.19	3.86	259.61	3.84	265.97	22 Aug 07	13:45
Government and non Profit organization	11,647	108,520,195	373.01	5.56	364.90	5.39	550.76	21 Aug 07	14:45
Public Lighting	-	19,105,407	0.00	0.00	0.00	0.00	46.22	-	-
Loss	-	145,683,501	244.63	3.65	244.32	3.61	244.63	14 Aug 07	14:30
TOTAL	2,676,383	3,775,743,721	6,709.24	100	6,763.86	100	6,763.86	21 Aug 07	14:15



Table 1-2

Number of sample customers on August, 2007

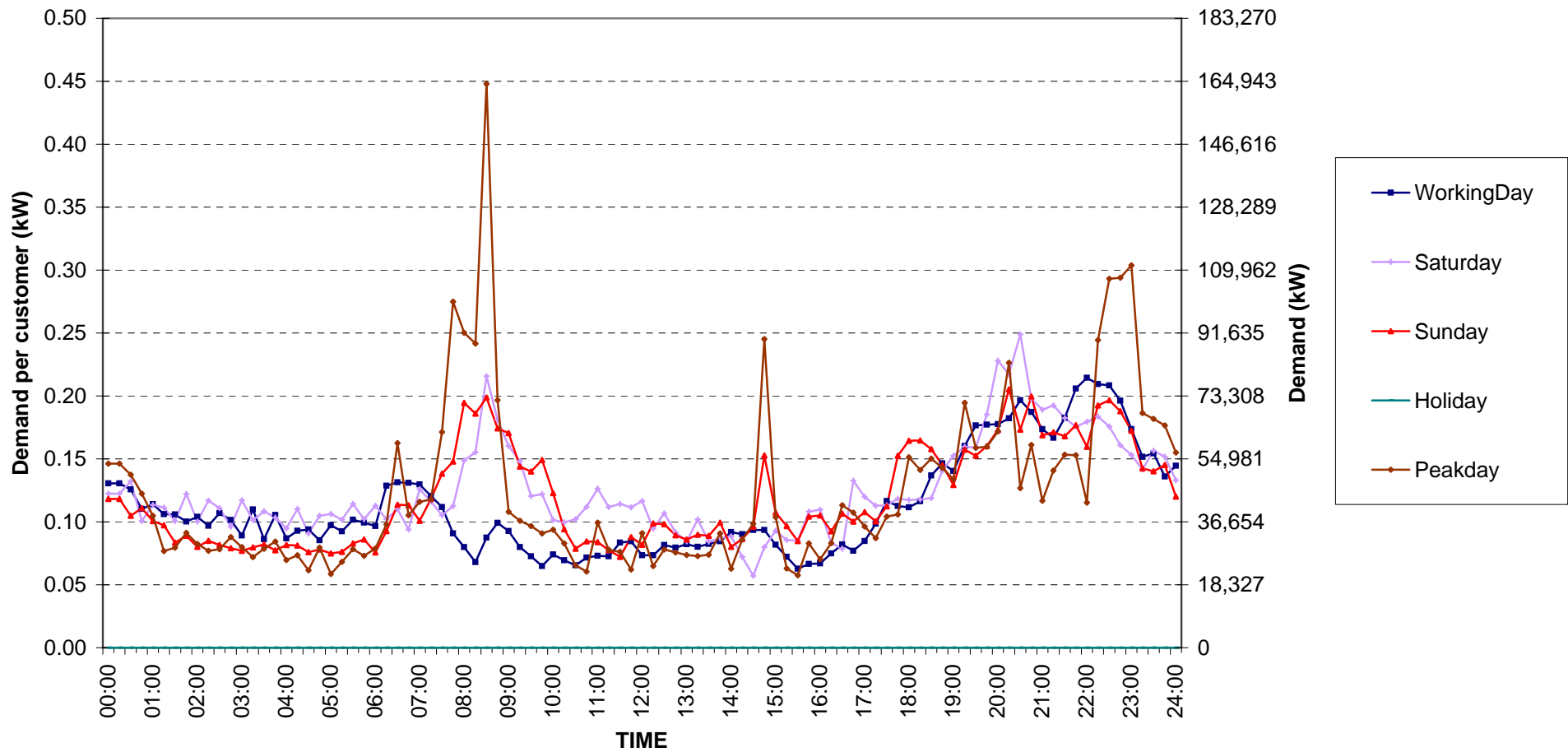
CLASS	Number of sample customers (Target)	Number of sample customers (Collected)
Residential	191	191
Small General Service	297	297
Medium General Service	163	163
Large General Service	328	328
Specific Business	76	76
Government and Non-profit Organization	68	68
TOTAL	1,123	1,123



## Residential ( Energy Consumption less than 150 kWh per month )

Date: 1 Aug, 2007 to 31 Aug, 2007

Number of sample customers = 10



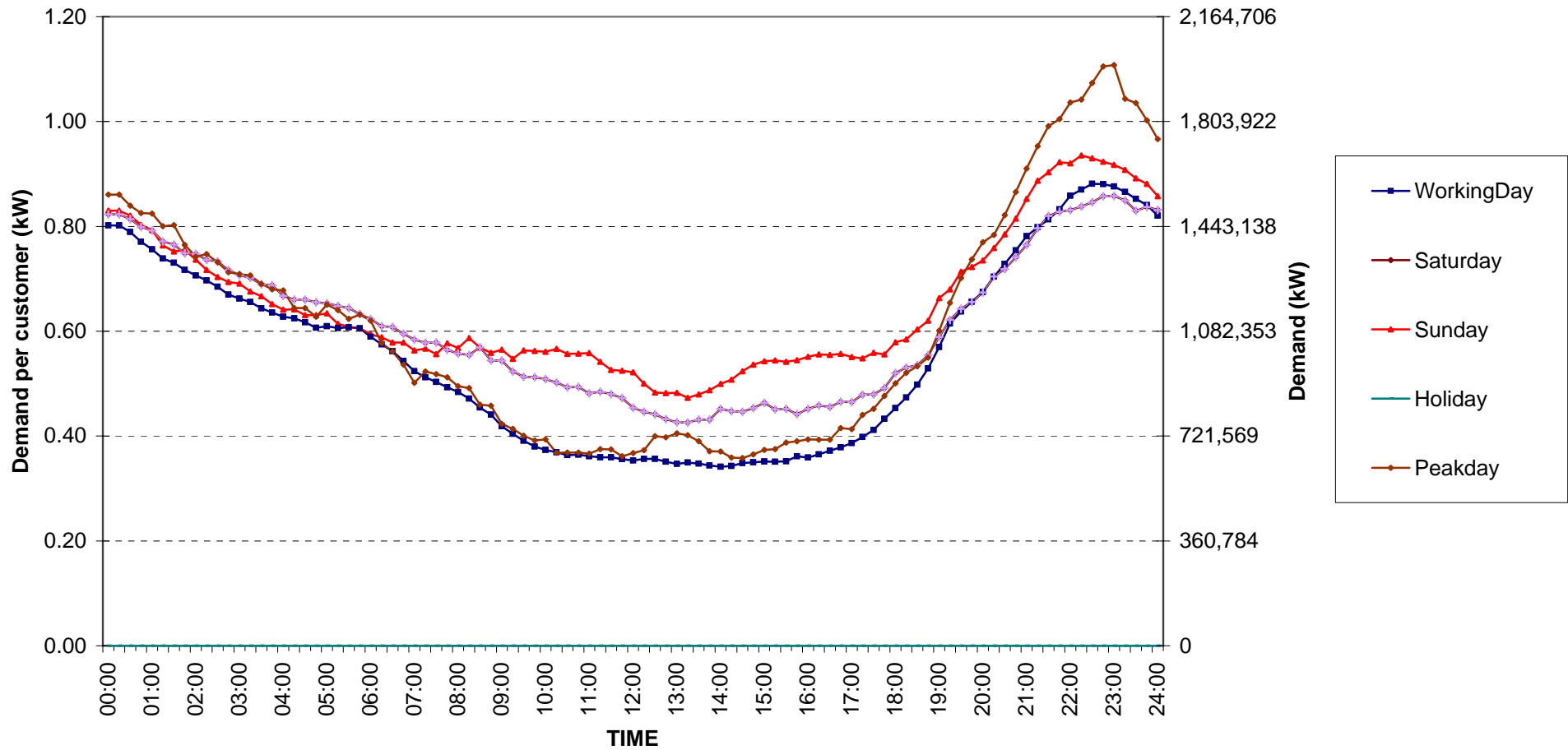
กราฟรูปที่ 1



Residential ( Energy Consumption more than 150 kWh per month )

Date: 1 Aug, 2007 to 31 Aug, 2007

Number of sample customers = 181



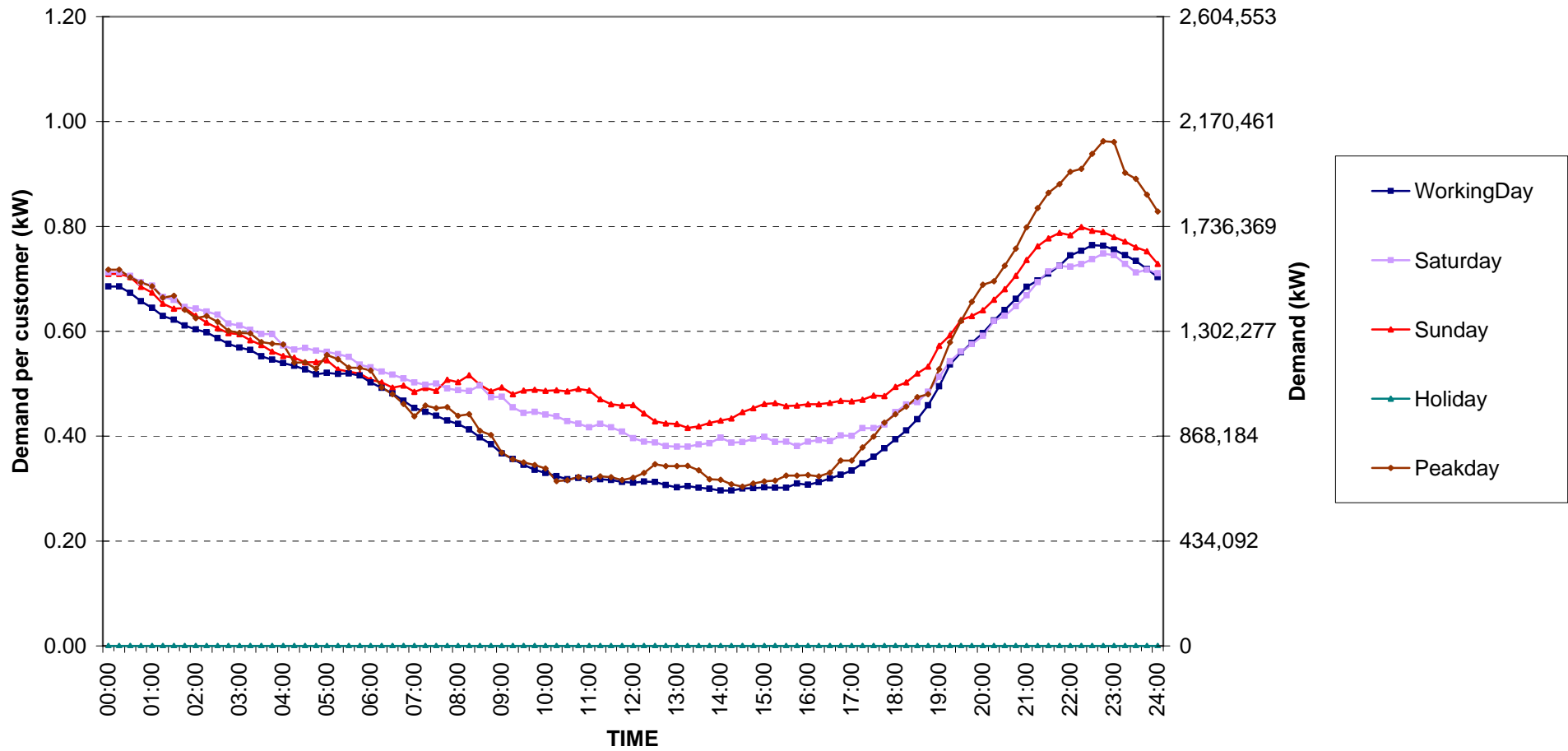
กราฟรูปที่ 2



Residential Load Profile

Date: 1 Aug, 2007 to 31 Aug, 2007

Number of sample customers = 191



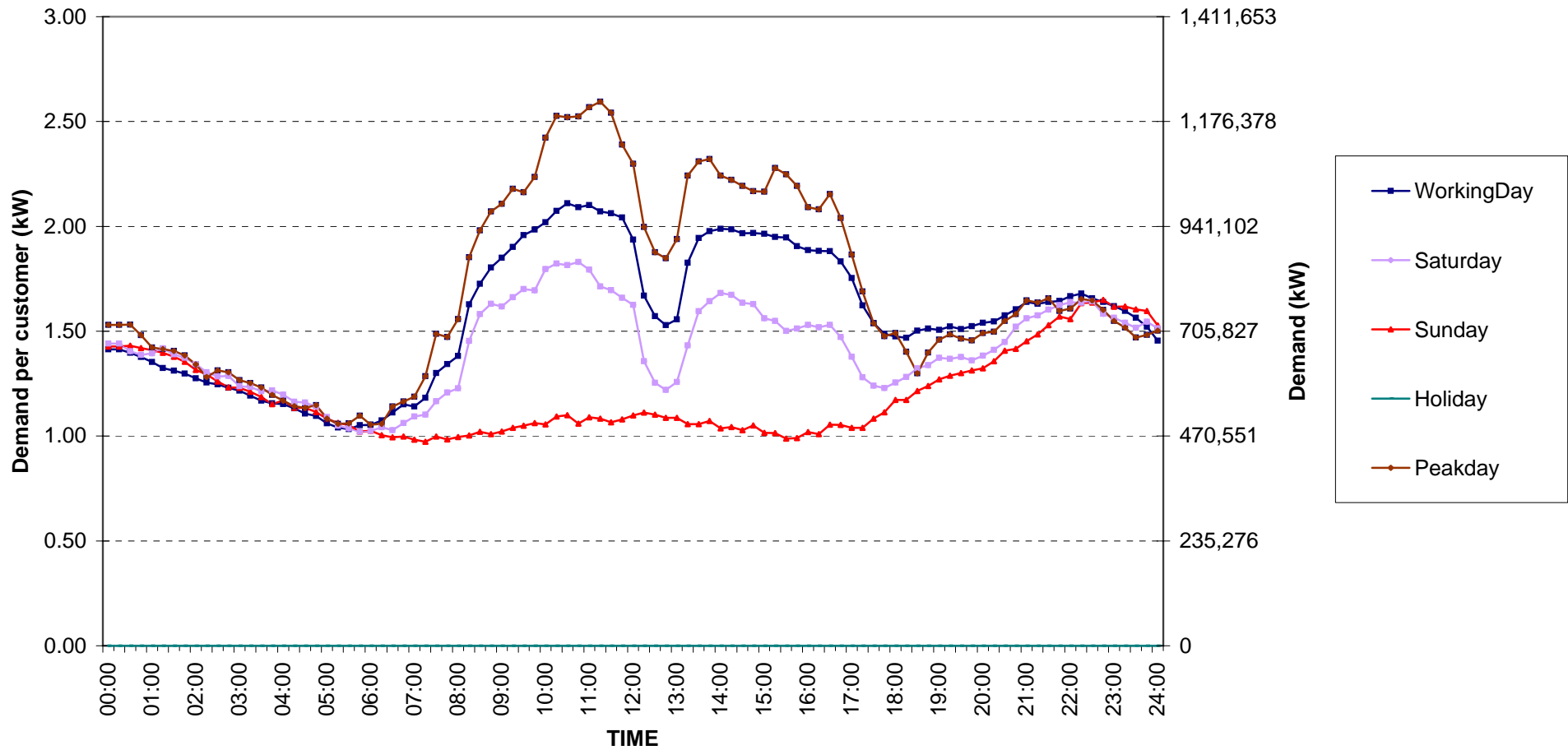
กราฟรูปที่ 3



### Small General Services Load Profile

Date: 1 Aug, 2007 to 31 Aug, 2007

Number of sample customers = 297



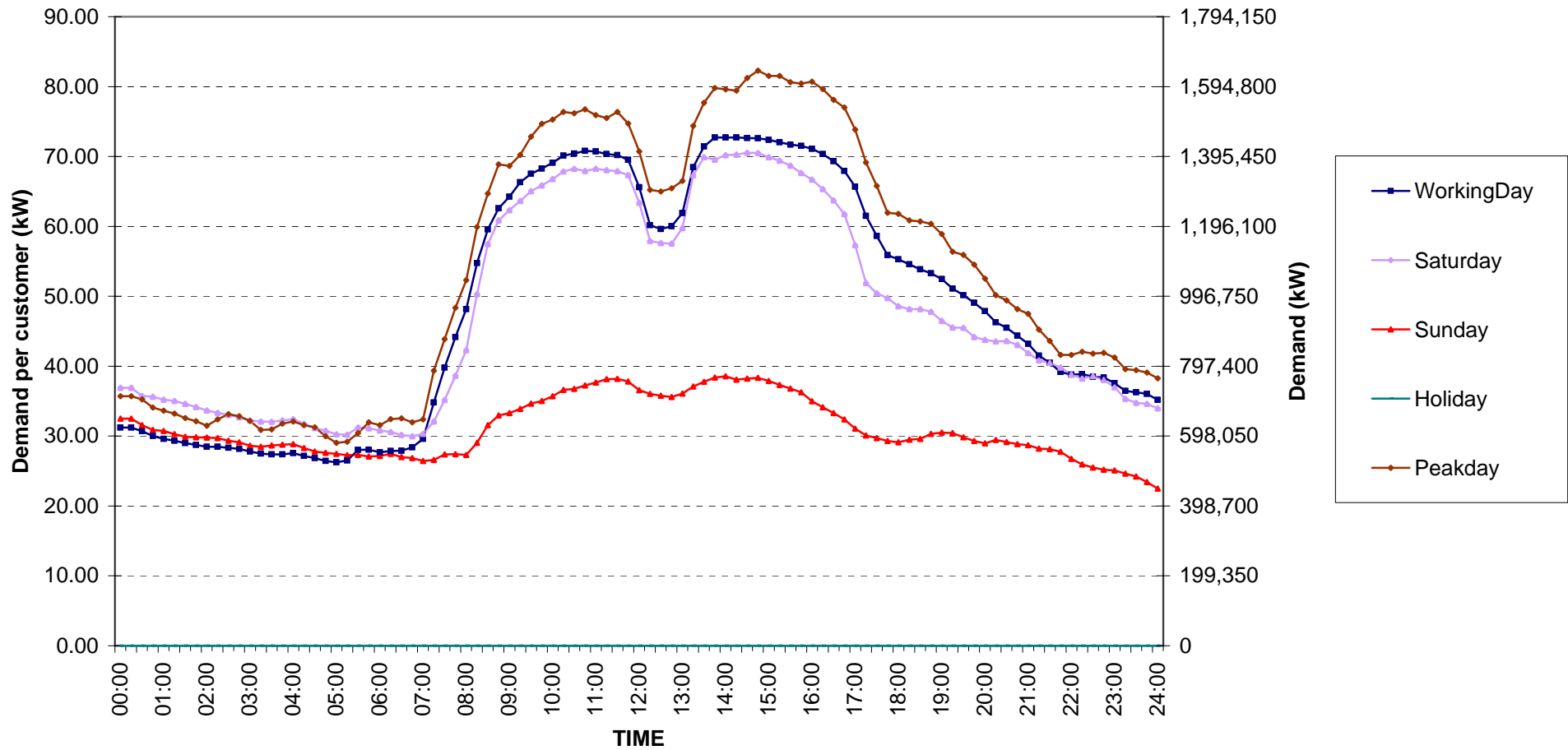
กราฟรูปที่ 4



Medium General Services Load Profile

Date: 1 Aug, 2007 to 31 Aug, 2007

Number of sample customers = 163



กราฟรูปที่ 5

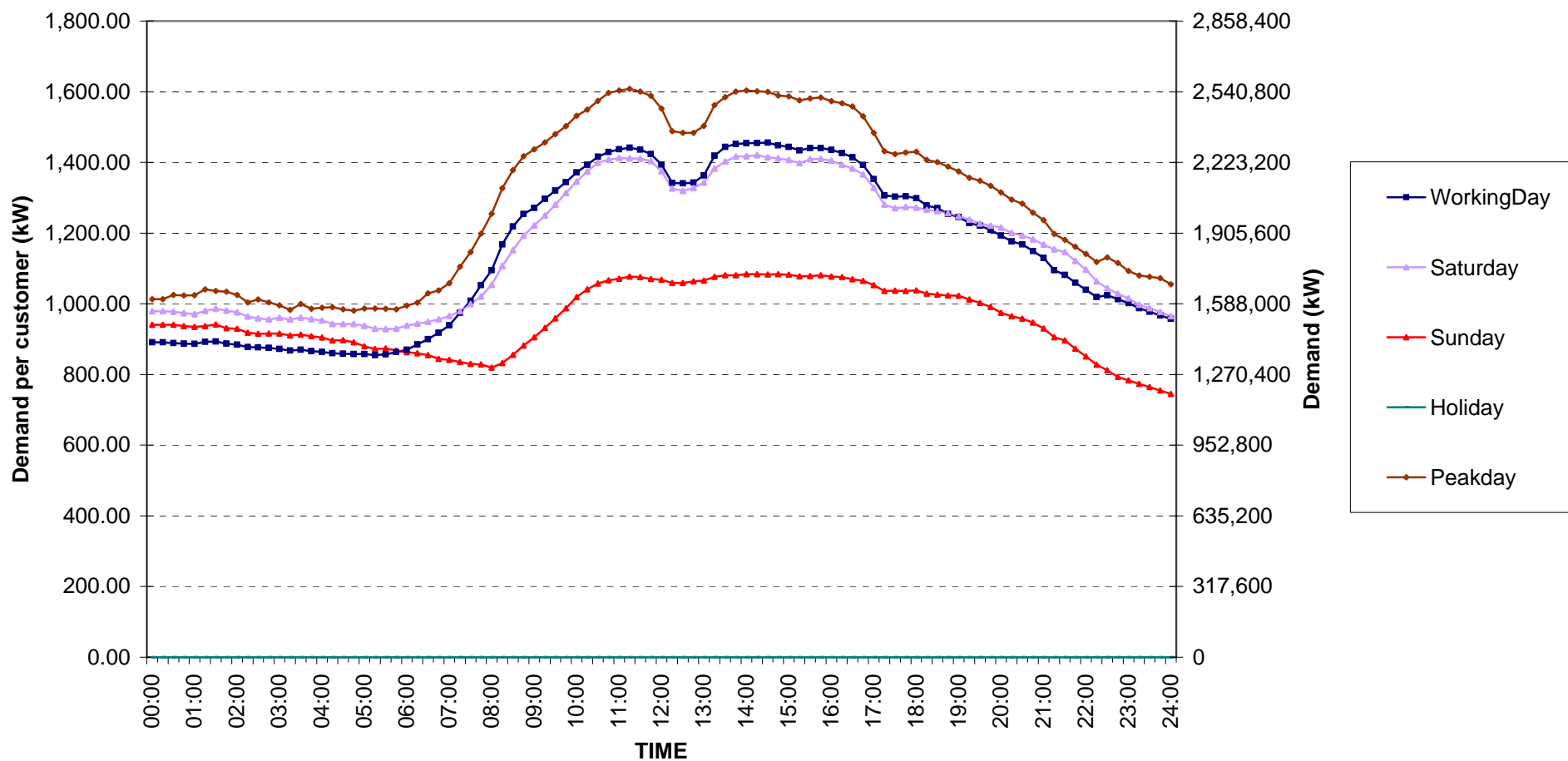




## Large General Services Load Profile

Date: 1 Aug, 2007 to 31 Aug, 2007

Number of sample customers = 328



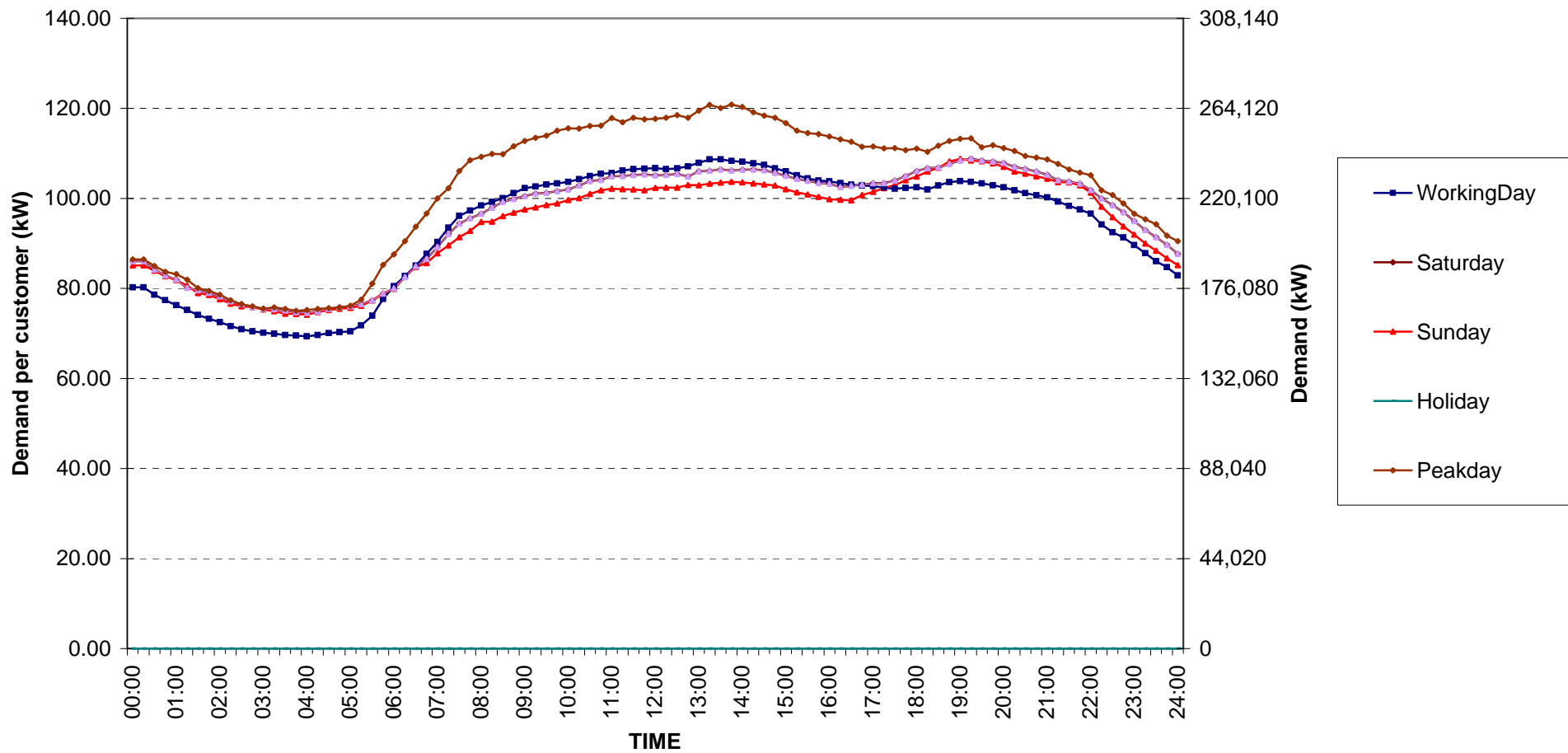
กราฟรูปที่ 6



## Specific Business Load Profile

Date: 1 Aug, 2007 to 31 Aug, 2007

Number of sample customers = 76



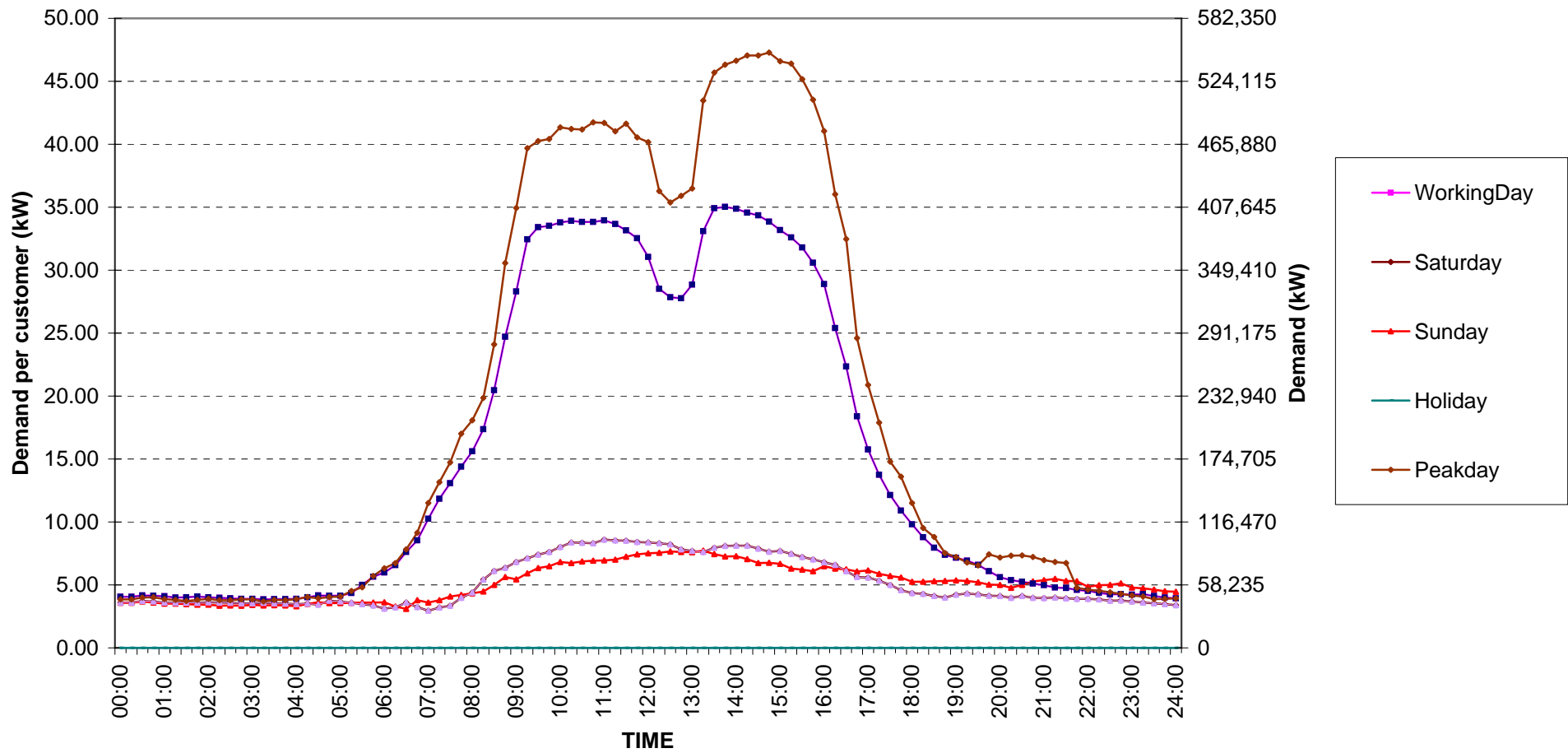
กราฟรูปที่ 7



Government institutions and non-profit organizations Load Profile

Date: 1 Aug, 2007 to 31 Aug, 2007

Number of sample customers = 68



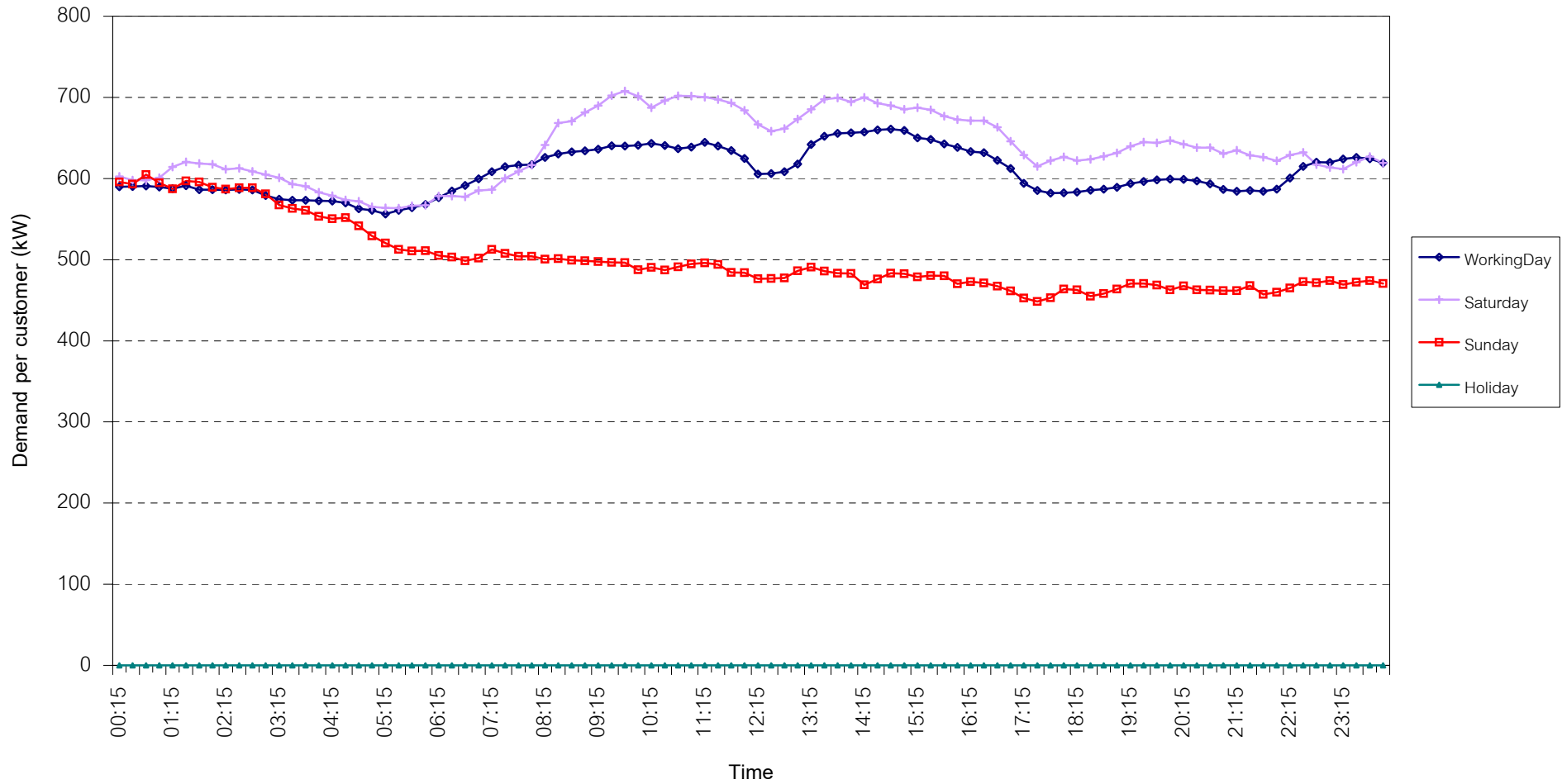
กราฟรูปที่ 8



## TSIC 31 (Food Processing) Load Profile

Date: 1 Aug, 2007 to 31 Aug, 2007

Number of sample customers = 30



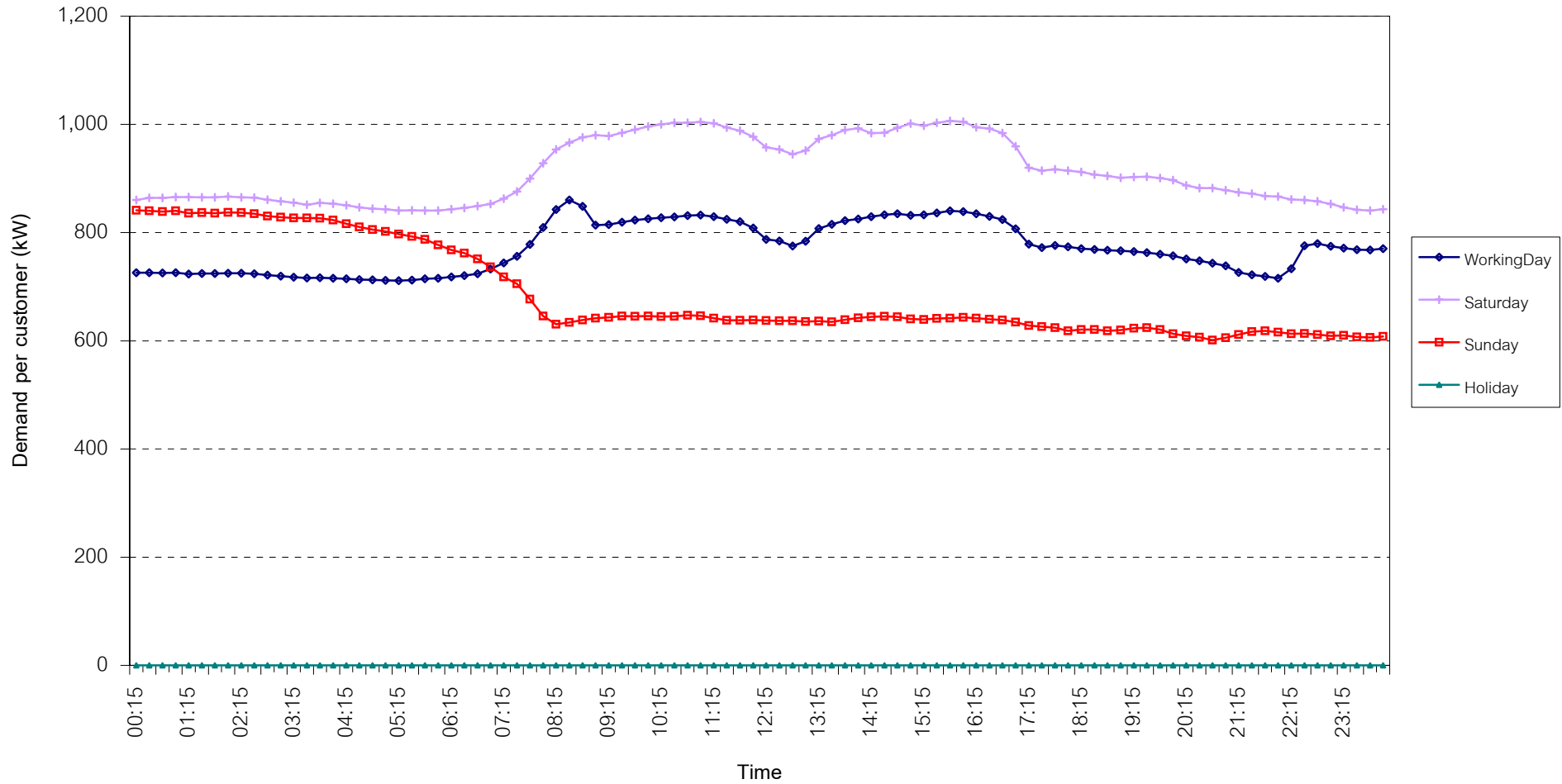
กราฟรูปที่ 9



TSIC 32 (Textiles) Load Profile

Date: 1 Aug, 2007 to 31 Aug, 2007

Number of sample customers = 63



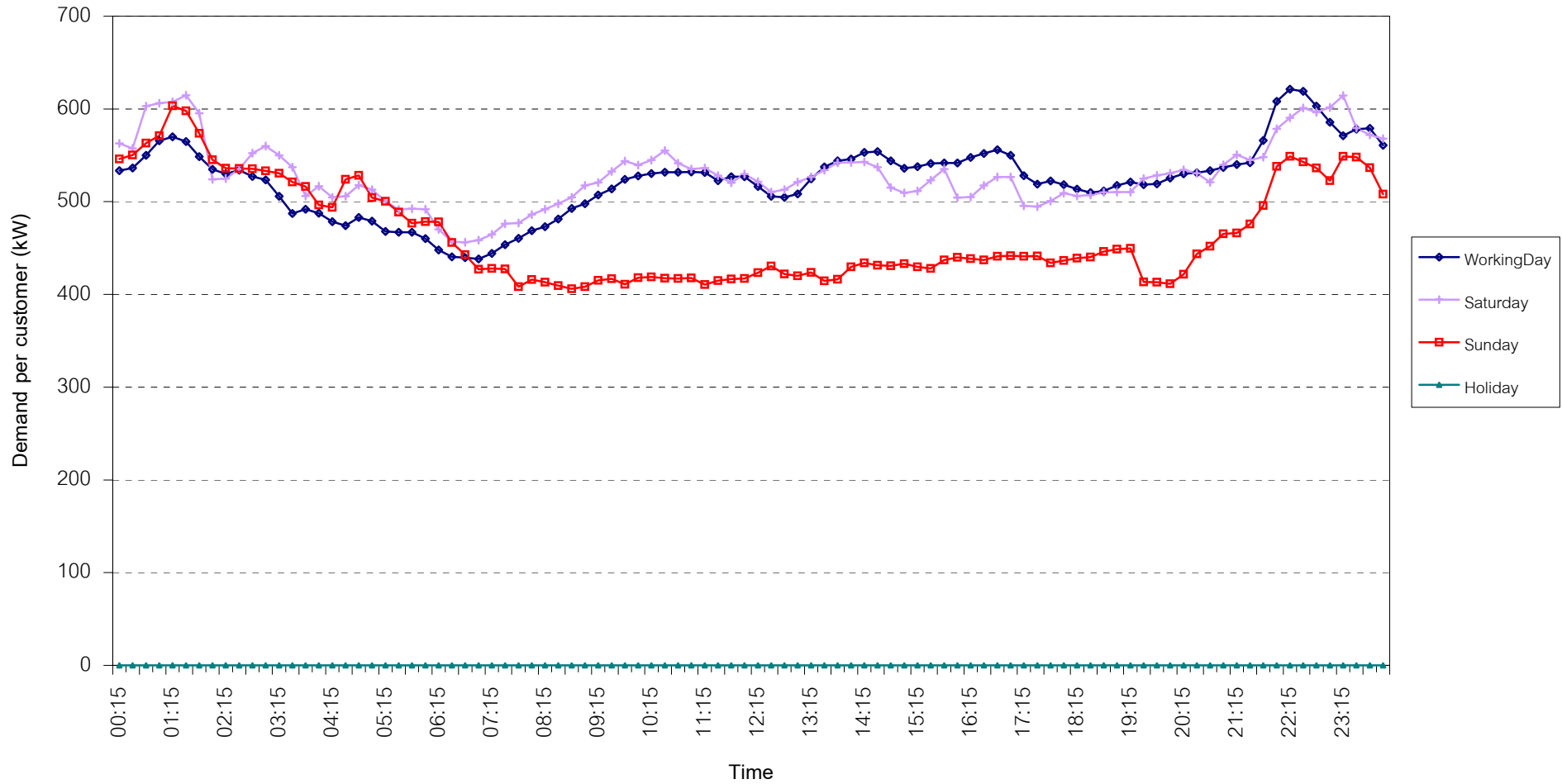
กราฟรูปที่ 10



## TSIC 34 (Paper & Printing) Load Profile

Date: 1 Aug, 2007 to 31 Aug, 2007

Number of sample customers = 10



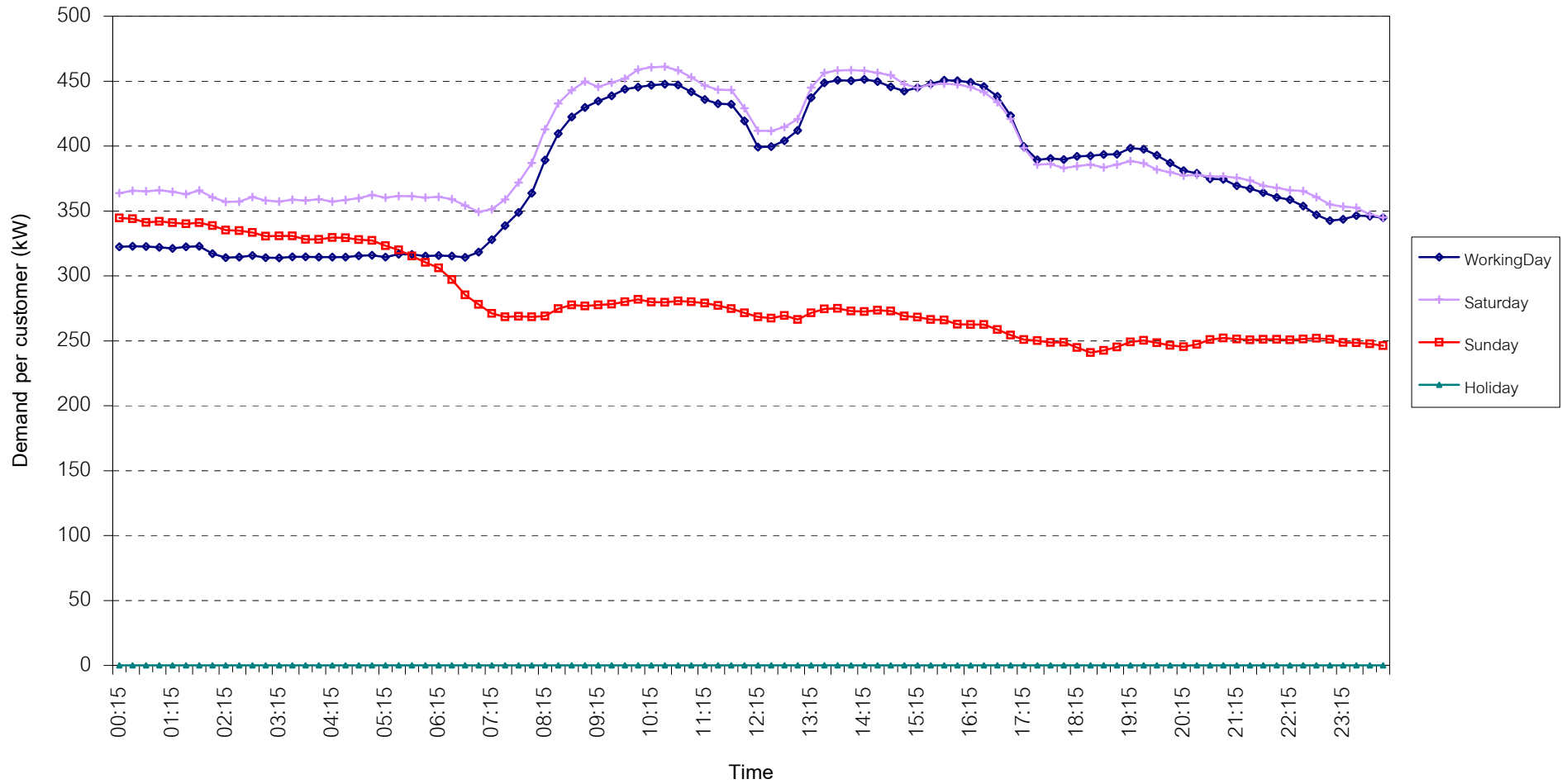
กราฟรูปที่ 11



TSIC 35 (Chemical & Petroleum) Load Profile

Date: 1 Aug, 2007 to 31 Aug, 2007

Number of sample customers = 62



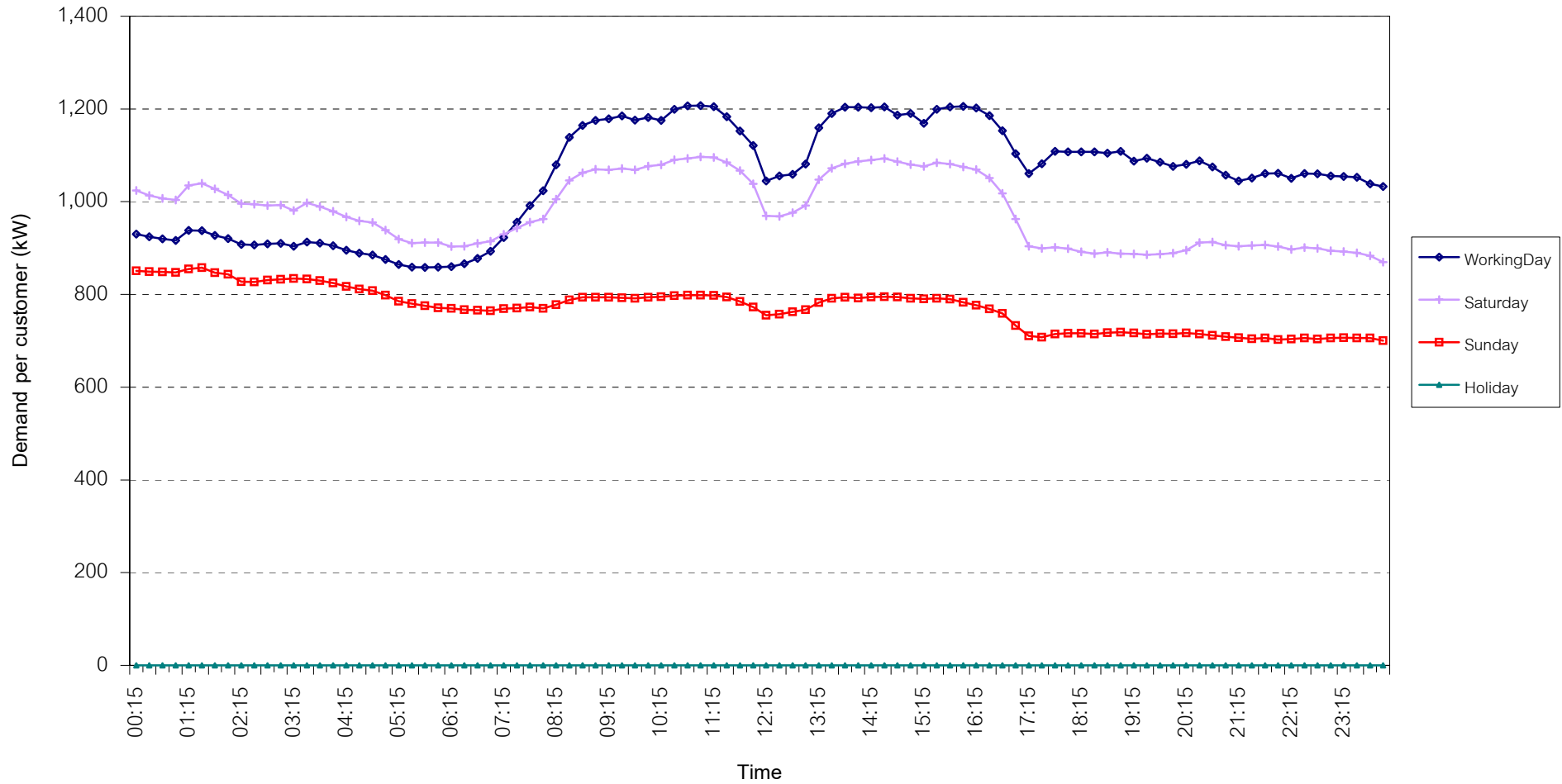
กราฟรูปที่ 12



## TSIC 38 (Fabricated Metal Products) Load Profile

Date: 1 Aug, 2007 to 31 Aug, 2007

Number of sample customers = 61



กราฟรูปที่ 13

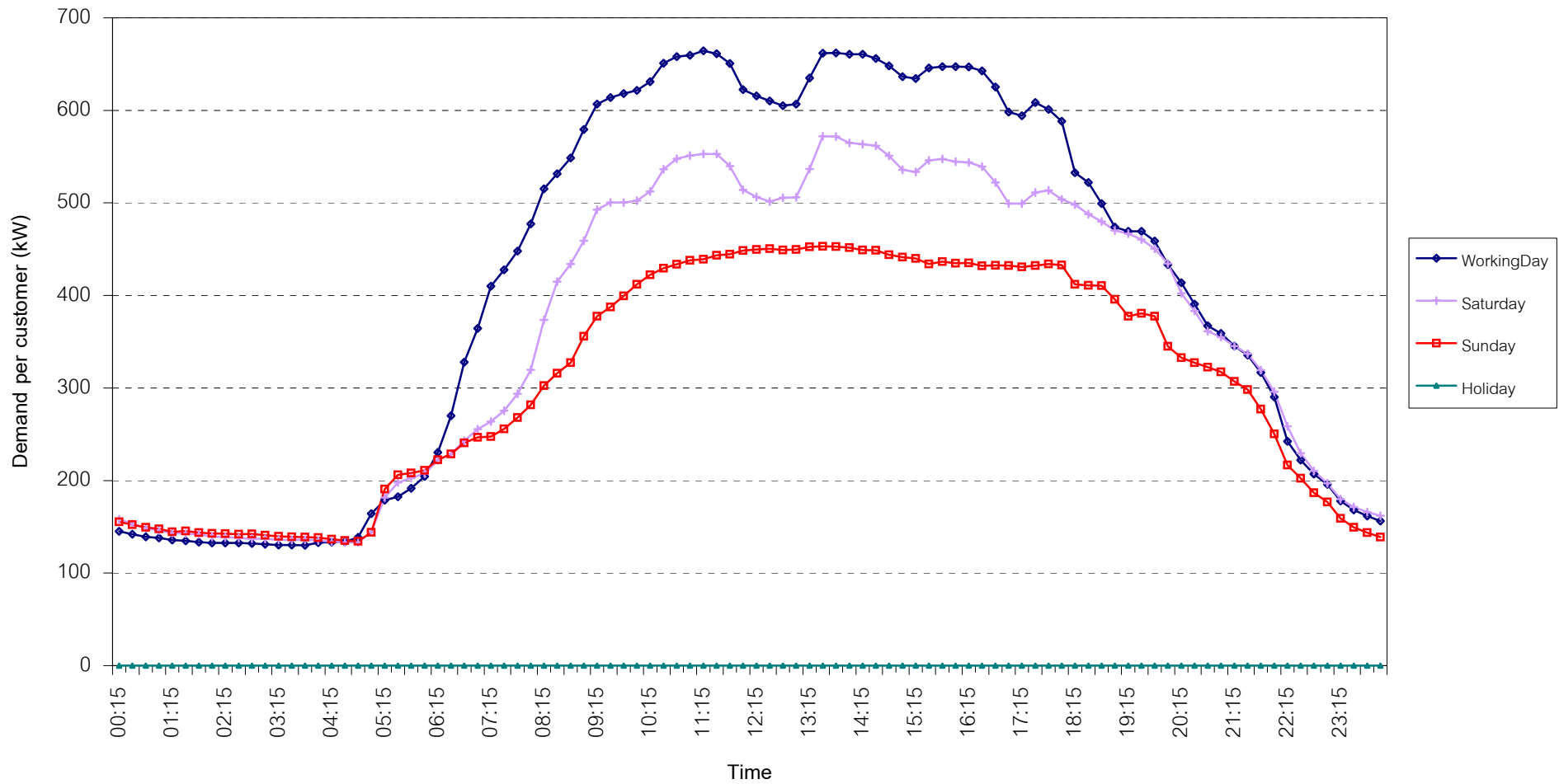




## TSIC 61 (Wholesale Trade) Load Profile

Date: 1 Aug, 2007 to 31 Aug, 2007

Number of sample customers = 8



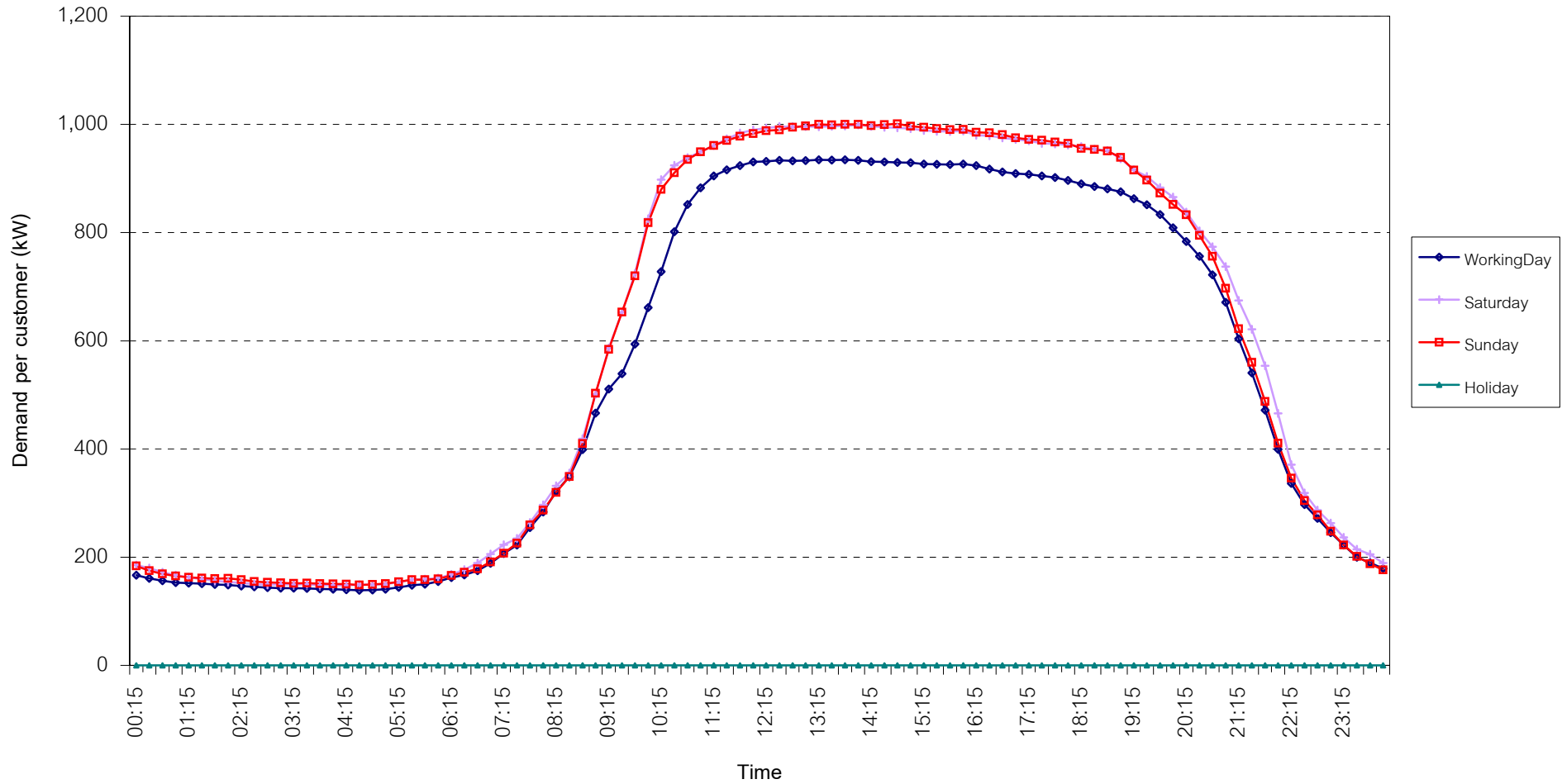
กราฟรูปที่ 14



## TSIC 62 (Retail Trade) Load Profile

Date: 1 Aug, 2007 to 31 Aug, 2007

Number of sample customers = 73



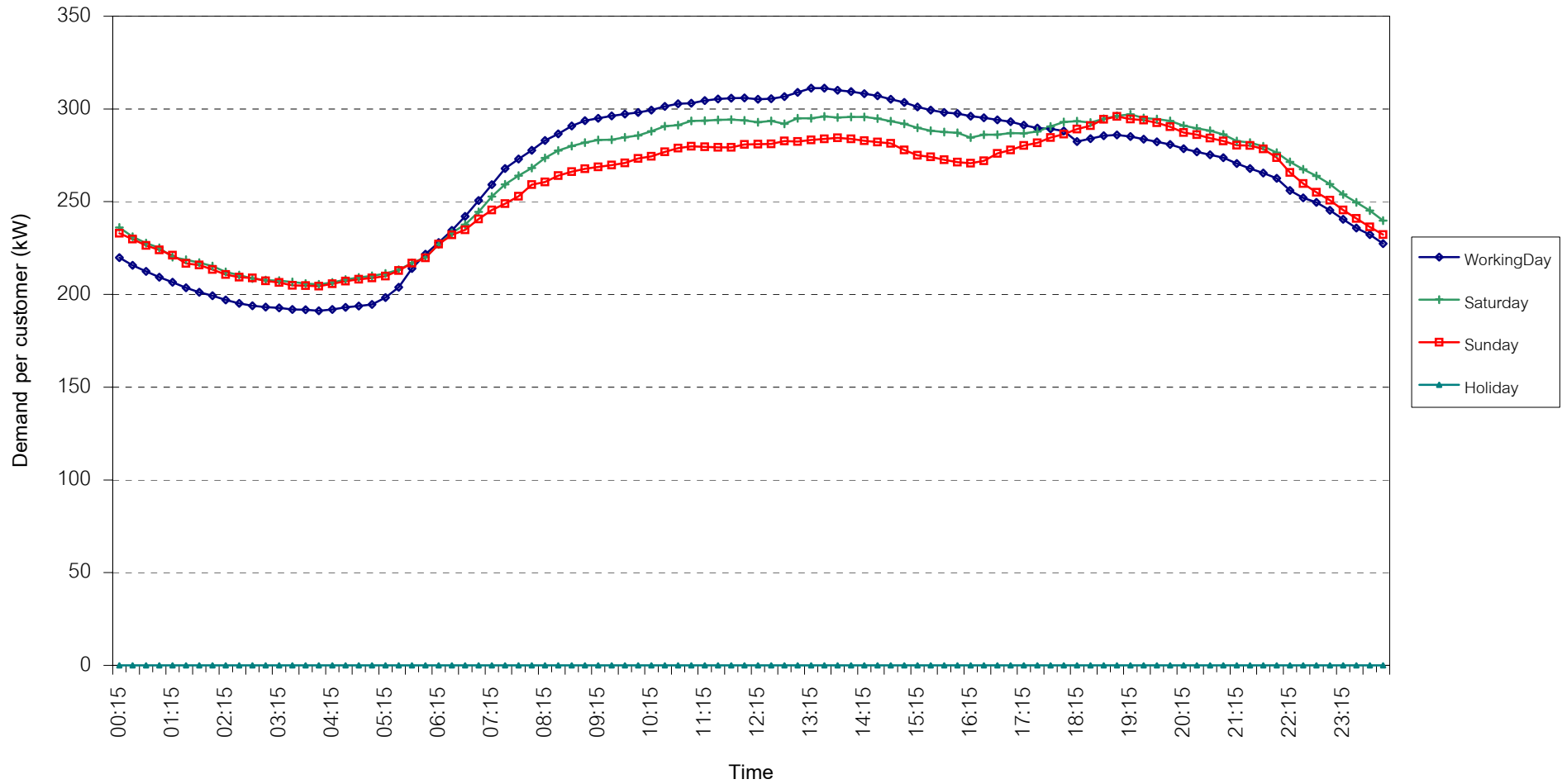
กราฟรูปที่ 15



## TSIC 63 (Hotels and restaurants) Load Profile

Date: 1 Aug, 2007 to 31 Aug, 2007

Number of sample customers = 82



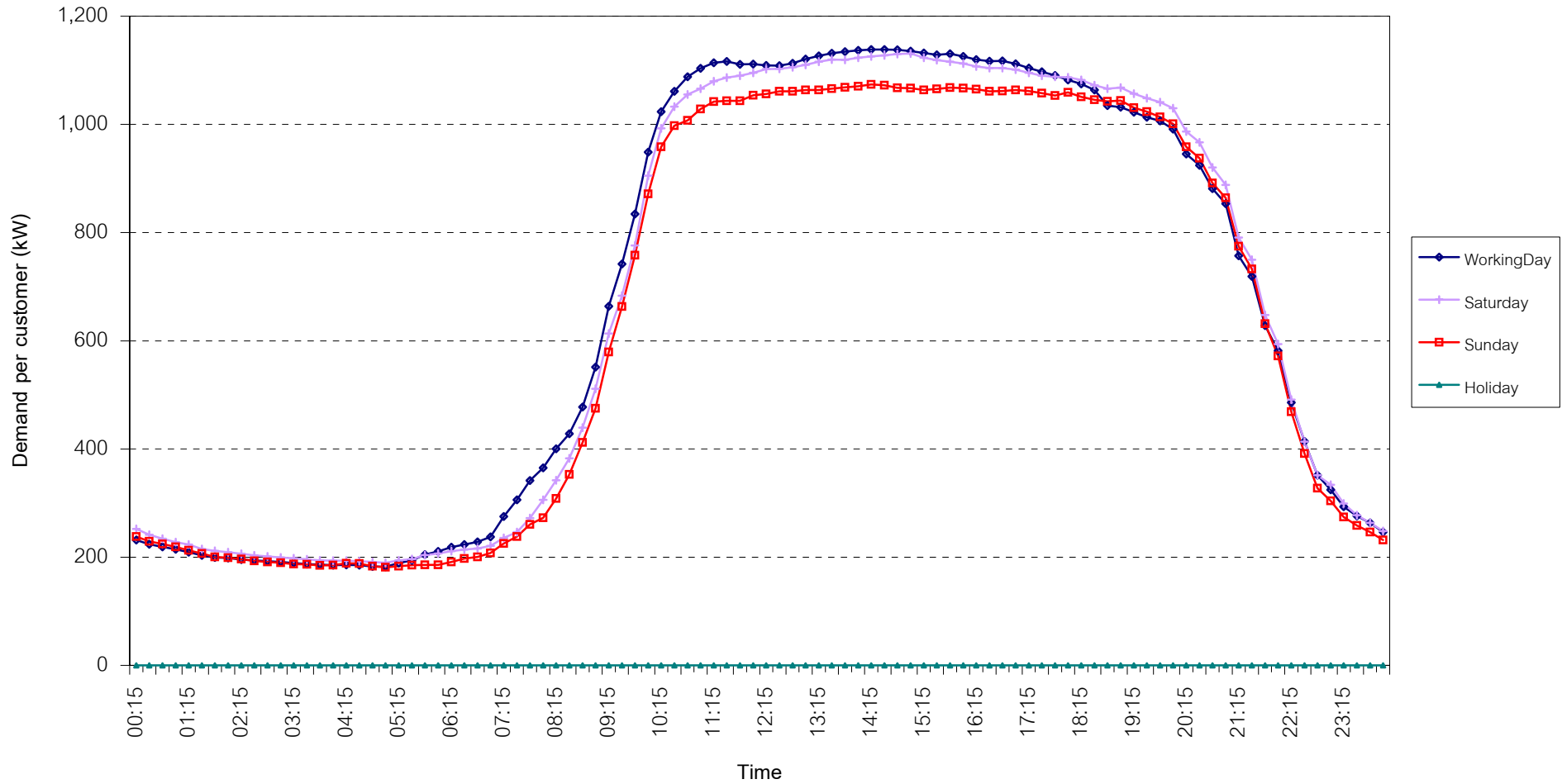
กราฟรูปที่ 16



TSIC 83 (Real Estate) Load Profile

Date: 1 Aug, 2007 to 31 Aug, 2007

Number of sample customers = 33



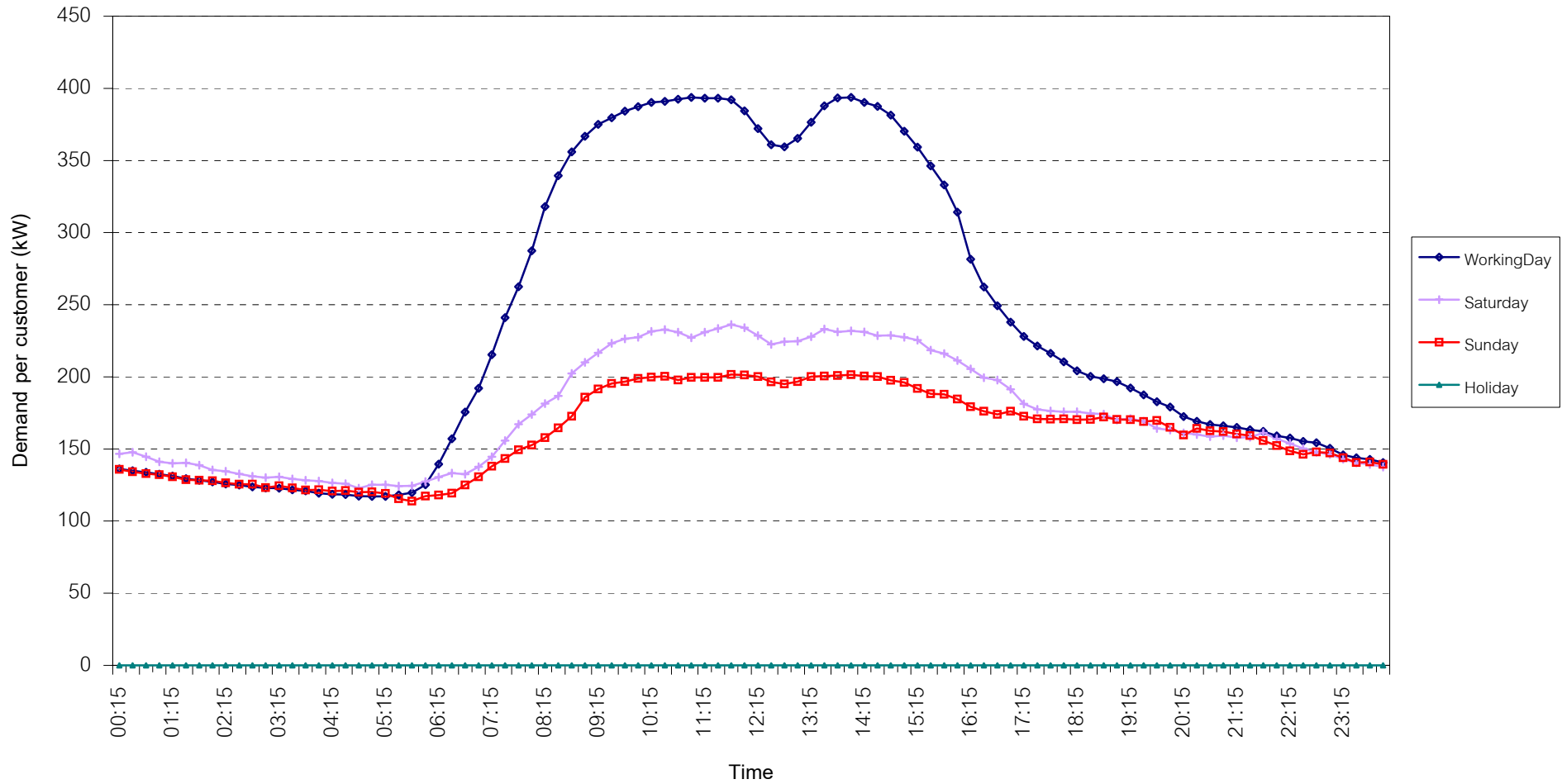
กราฟรูปที่ 17



## TSIC 93 (Social Services) Load Profile

Date: 1 Aug, 2007 to 31 Aug, 2007

Number of sample customers = 21

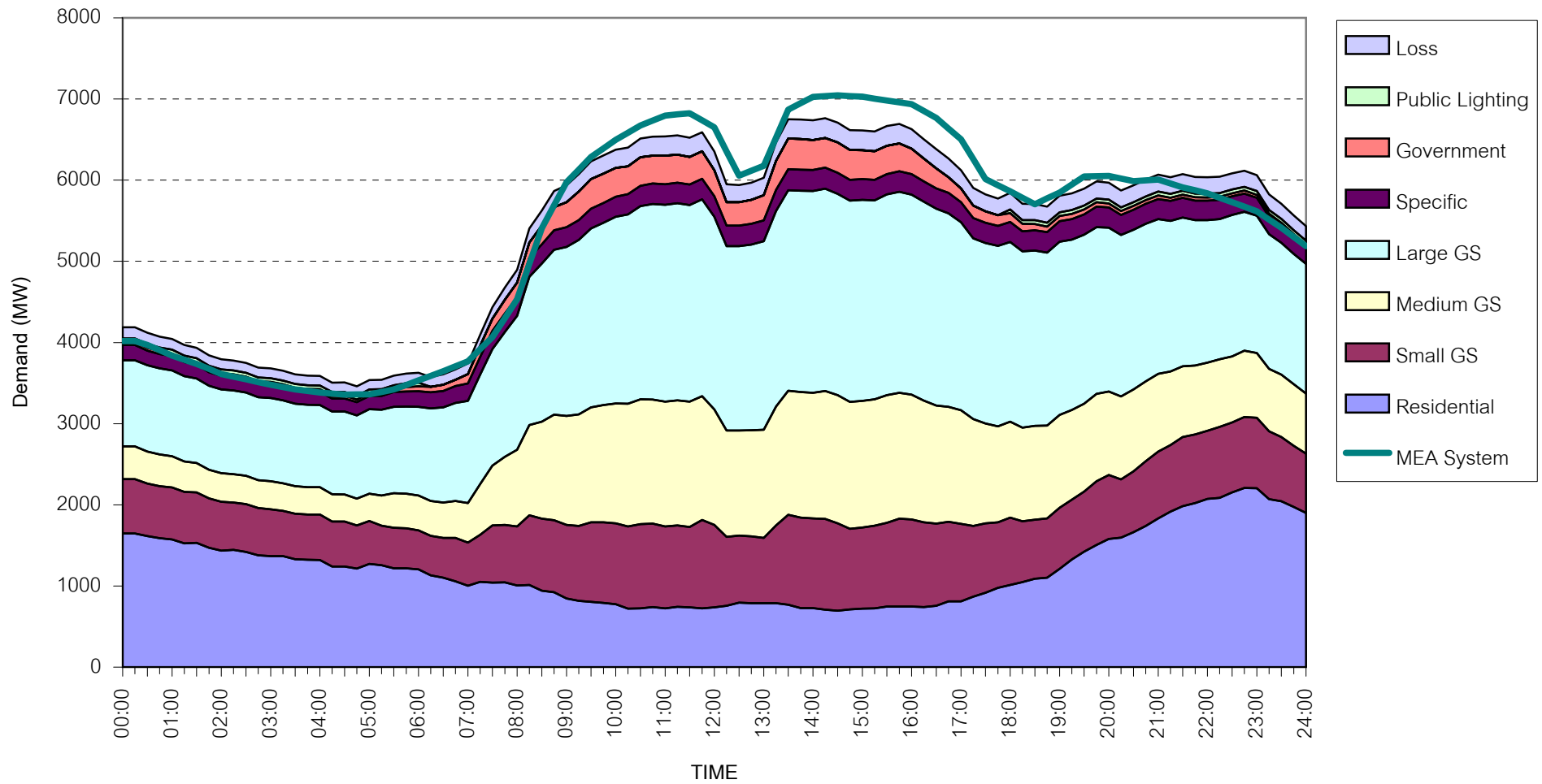


กราฟรูปที่ 18



## MEA's System Load Profile

Peak Day 14 August, 2007 at 14:30



กราฟรูปที่ 19