



ข้อมูลการศึกษาลักษณะการใช้ไฟฟ้า เดือน กรกฎาคม 2550



Table 1-1

COINCIDENT WITH SYSTEM LOAD RESEARCH SYSTEM'S PEAK ON July 15,2007 time 10:15 6,433.44 MW
(MEA SYSTEM'S PEAK ON July 15,2007 time 14:30 6,908.32 MW)

CLASS	Number of Customers	Kilowatt hours	Coincident Peak (MEA System Peak at time14:30)		Coincident Peak (Load Research System Peak at time 10:15)		Sector Diversified Demand		
			MW	Contribution (%)	MW	Contribution (%)	Max MW.	Date	Time
Residential	2,165,083	782,467,278	760.47	11.96	807.14	12.55	1,907.73	30 Jul 07	22:45
Small General Service	469,571	521,659,721	877.95	13.81	1,007.53	15.66	1,190.60	18 Jul 07	11:30
Medium General Service	19,914	677,822,122	1,456.63	22.91	1,417.30	22.03	1,618.65	16 Jul 07	14:45
Large General Service	1,590	1,329,751,720	2,420.68	38.06	2,314.52	35.98	2,506.21	25 Jul 07	11:15
Specific Business	2,181	149,565,169	271.90	4.28	264.18	4.11	280.68	25 Jul 07	13:00
Government and non Profit organization	10,481	110,545,198	354.28	5.57	415.04	6.45	545.54	23 Jul 07	11:00
Public Lighting	-	18,962,468	0.00	0.00	0.00	0.00	50.35	-	-
Loss	-	118,199,926	217.45	3.42	207.74	3.23	217.45	15 Jul 07	14:30
TOTAL	2,668,820	3,708,973,602	6,359.37	100	6,433.44	100	6,433.44	15 Jul 07	10:15



Table 1-2

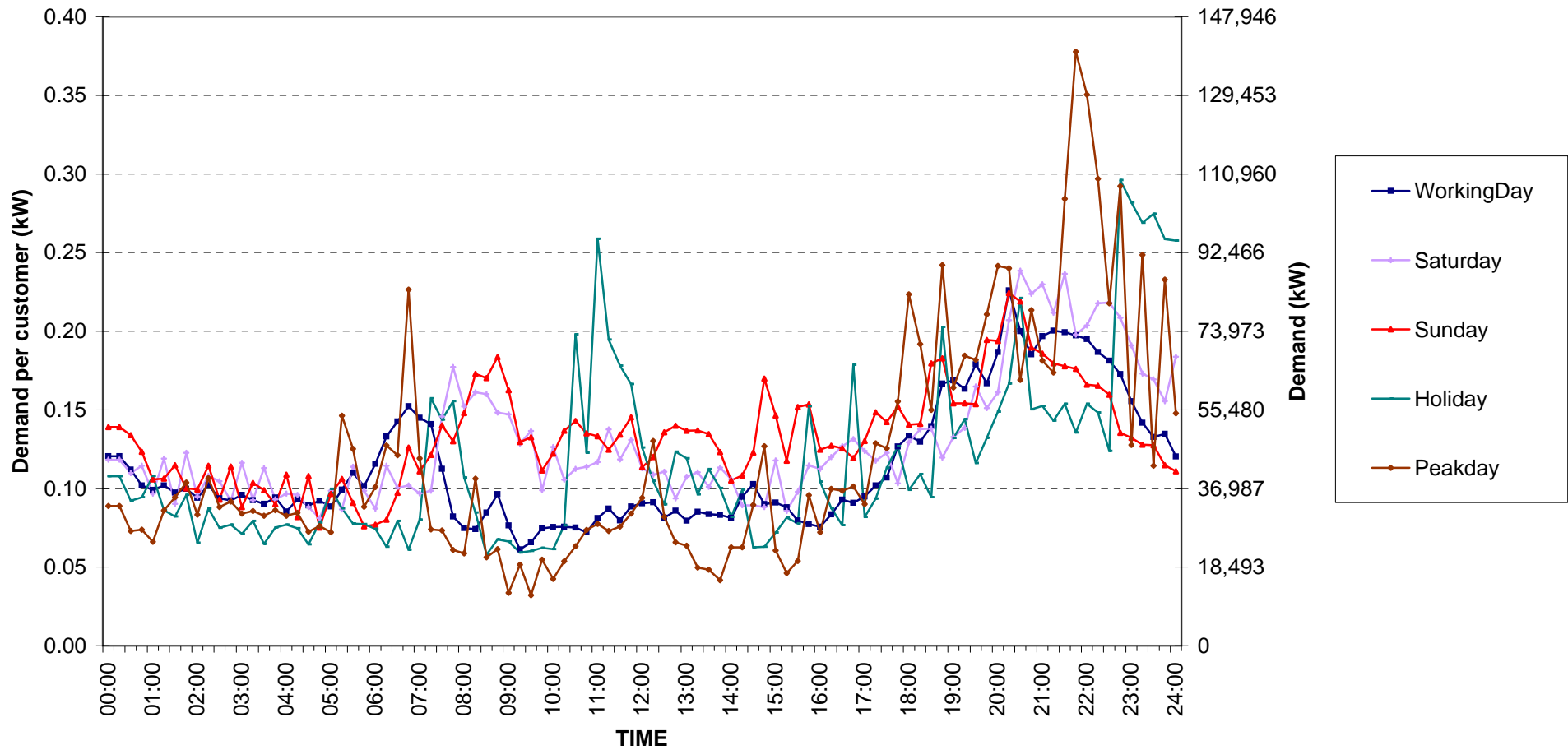
Number of sample customers on July, 2007

CLASS	Number of sample customers (Target)	Number of sample customers (Collected)
Residential	191	191
Small General Service	297	297
Medium General Service	163	163
Large General Service	328	328
Specific Business	76	76
Government and Non-profit Organization	68	68
TOTAL	1,123	1,123



Residential (Energy Consumption less than 150 kWh per month)

Date: 1 Jul, 2007 to 31 Jul, 2007

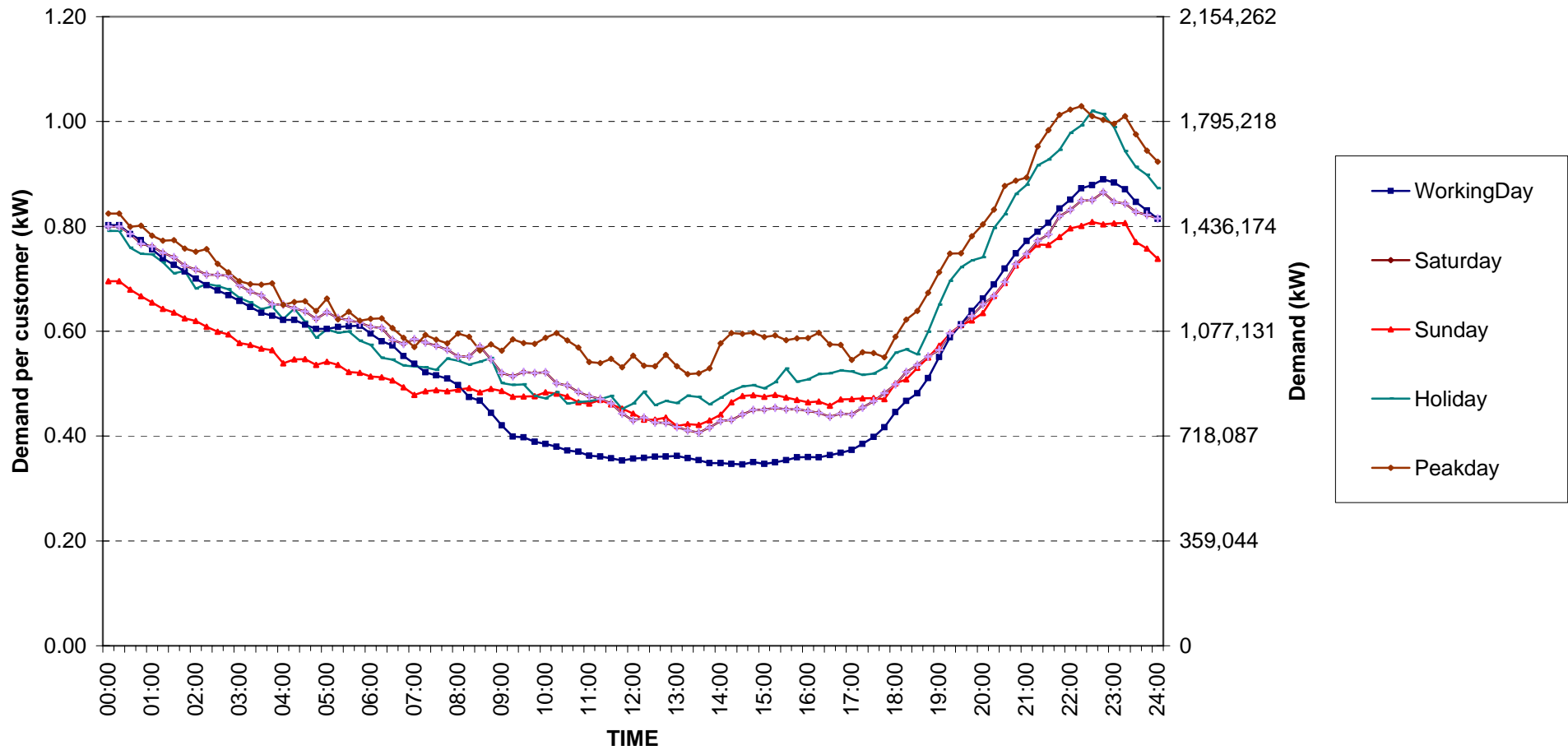


กราฟรูปที่ 1



Residential (Energy Consumption more than 150 kWh per month)

Date: 1 Jul, 2007 to 31 Jul, 2007

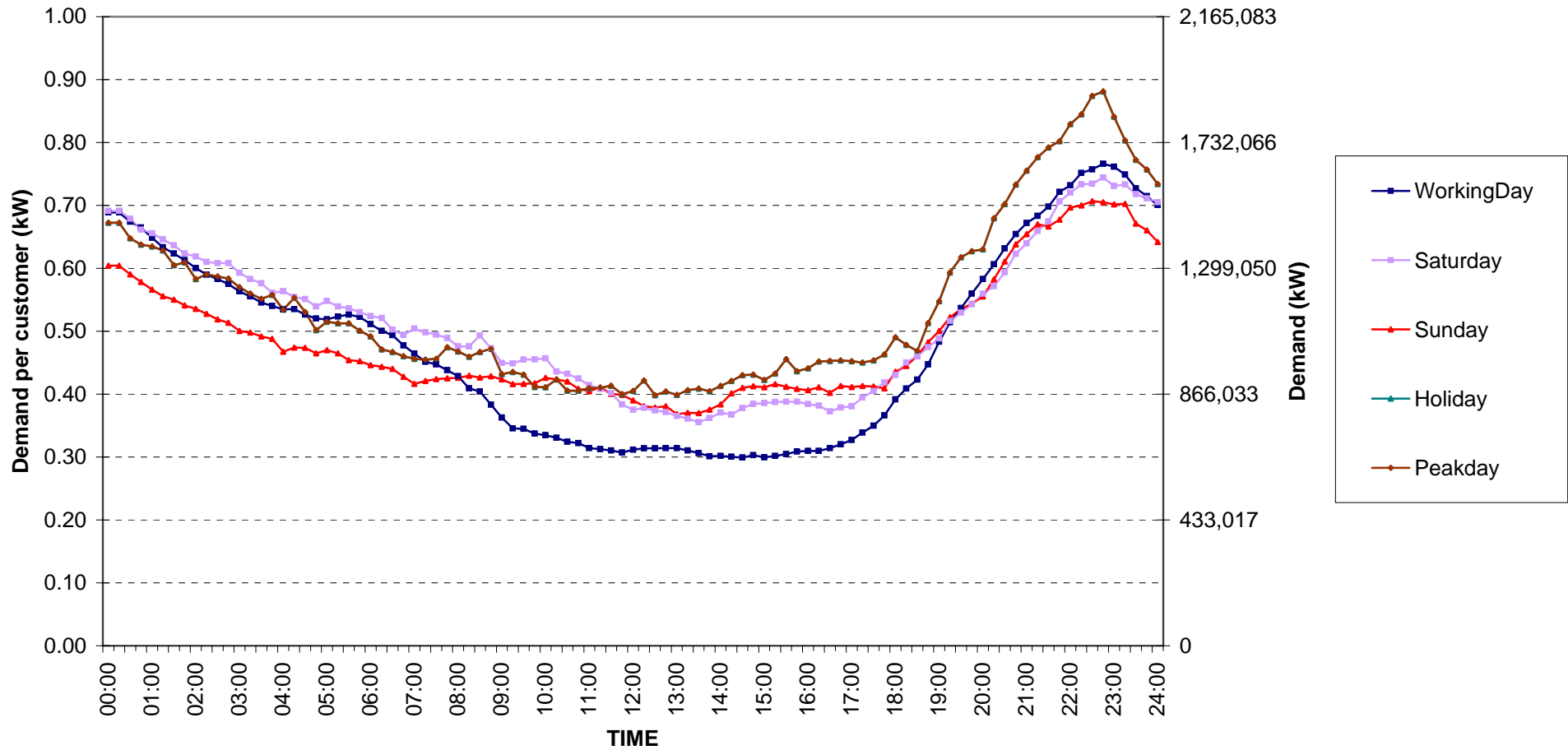


กราฟรูปที่ 2



Residential Load Profile

Date: 1 Jul, 2007 to 31 Jul, 2007

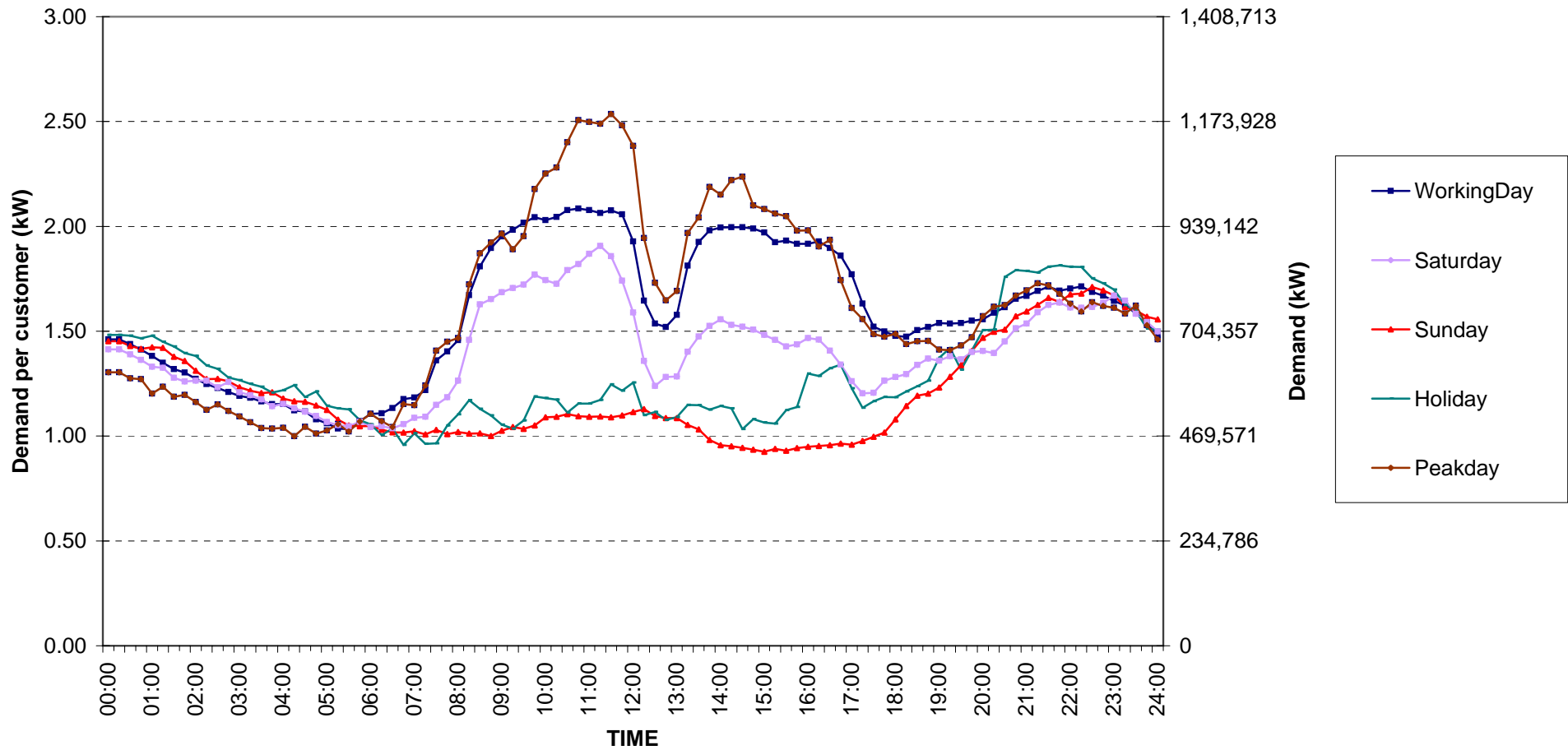


กราฟรูปที่ 3



Small General Services Load Profile

Date: 1 Jul, 2007 to 31 Jul, 2007

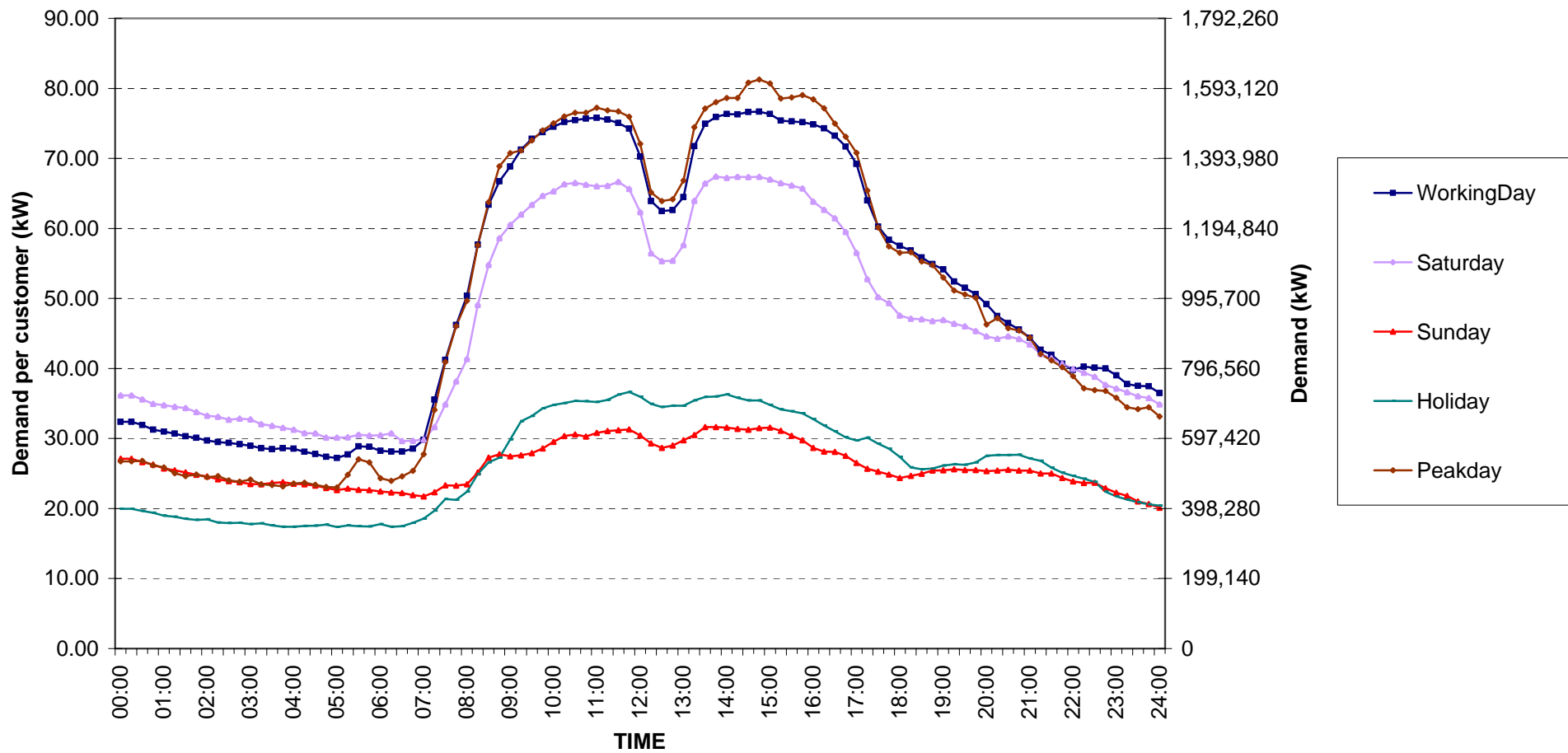


กราฟรูปที่ 4



Medium General Services Load Profile

Date: 1 Jul, 2007 to 31 Jul, 2007

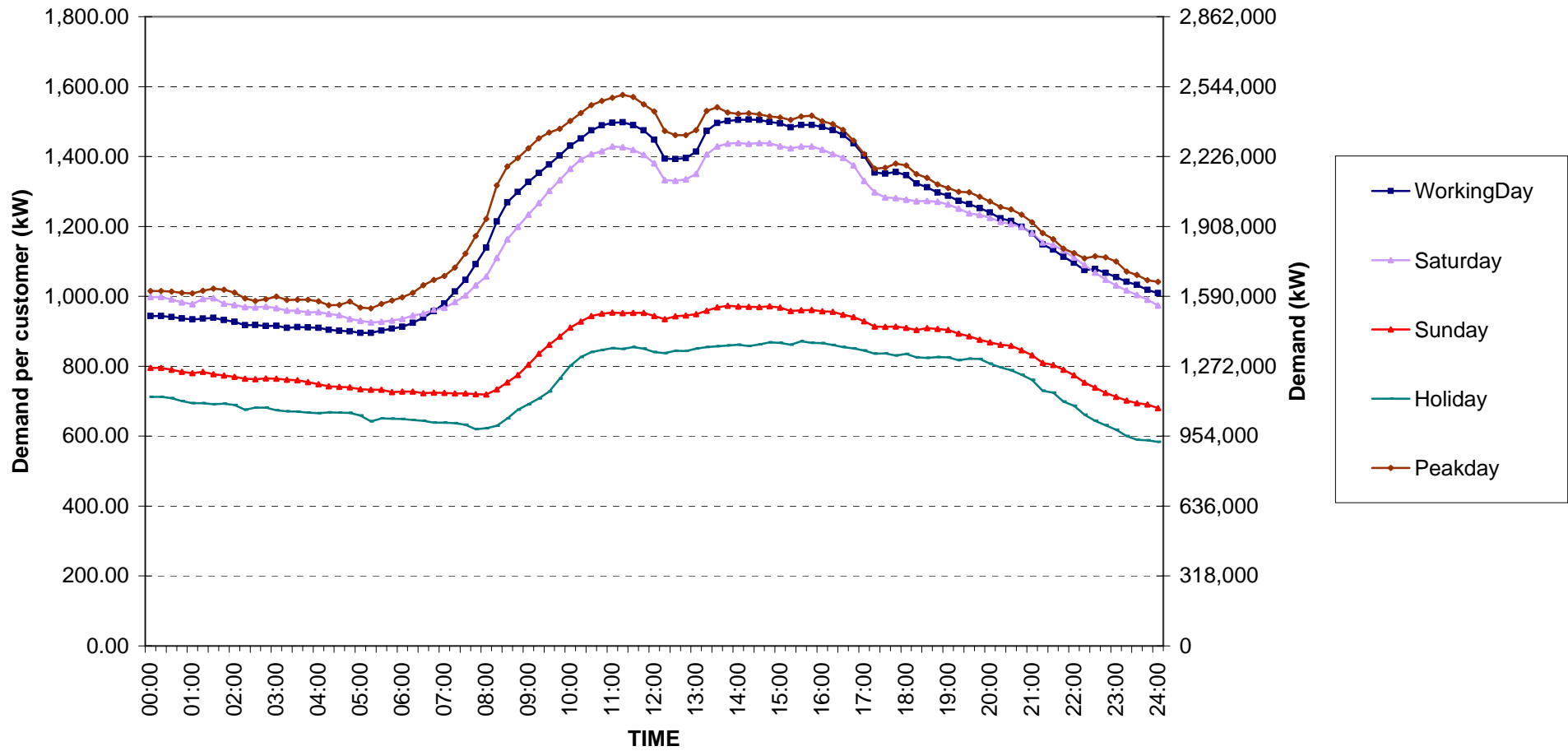


กราฟรูปที่ 5



Large General Services Load Profile

Date: 1 Jul, 2007 to 31 Jul, 2007

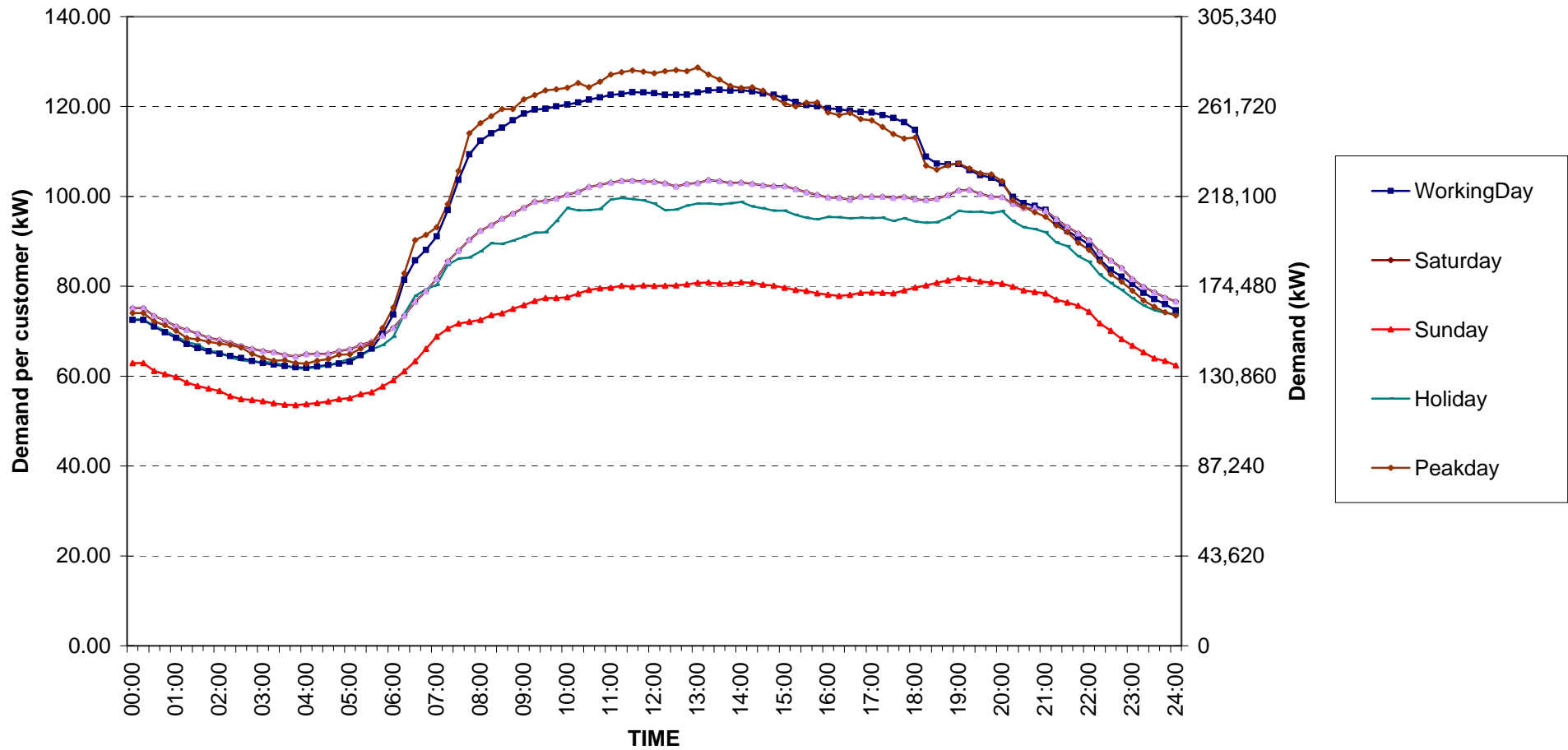


กราฟรูปที่ 6



Specific Business Load Profile

Date: 1 Jul, 2007 to 31 Jul, 2007

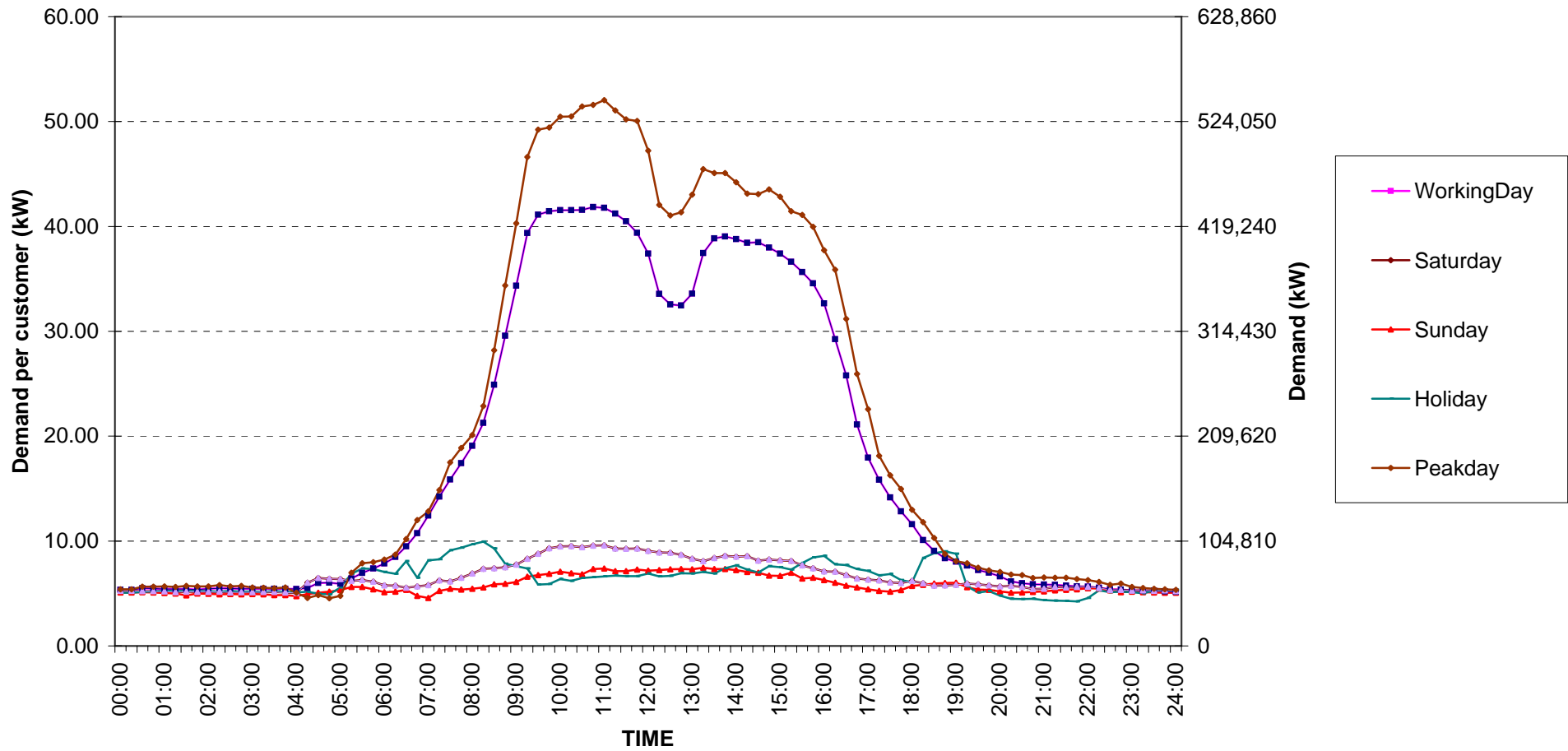


กราฟรูปที่ 7



Government institutions and non-profit organizations Load Profile

Date: 1 Jul, 2007 to 31 Jul, 2007



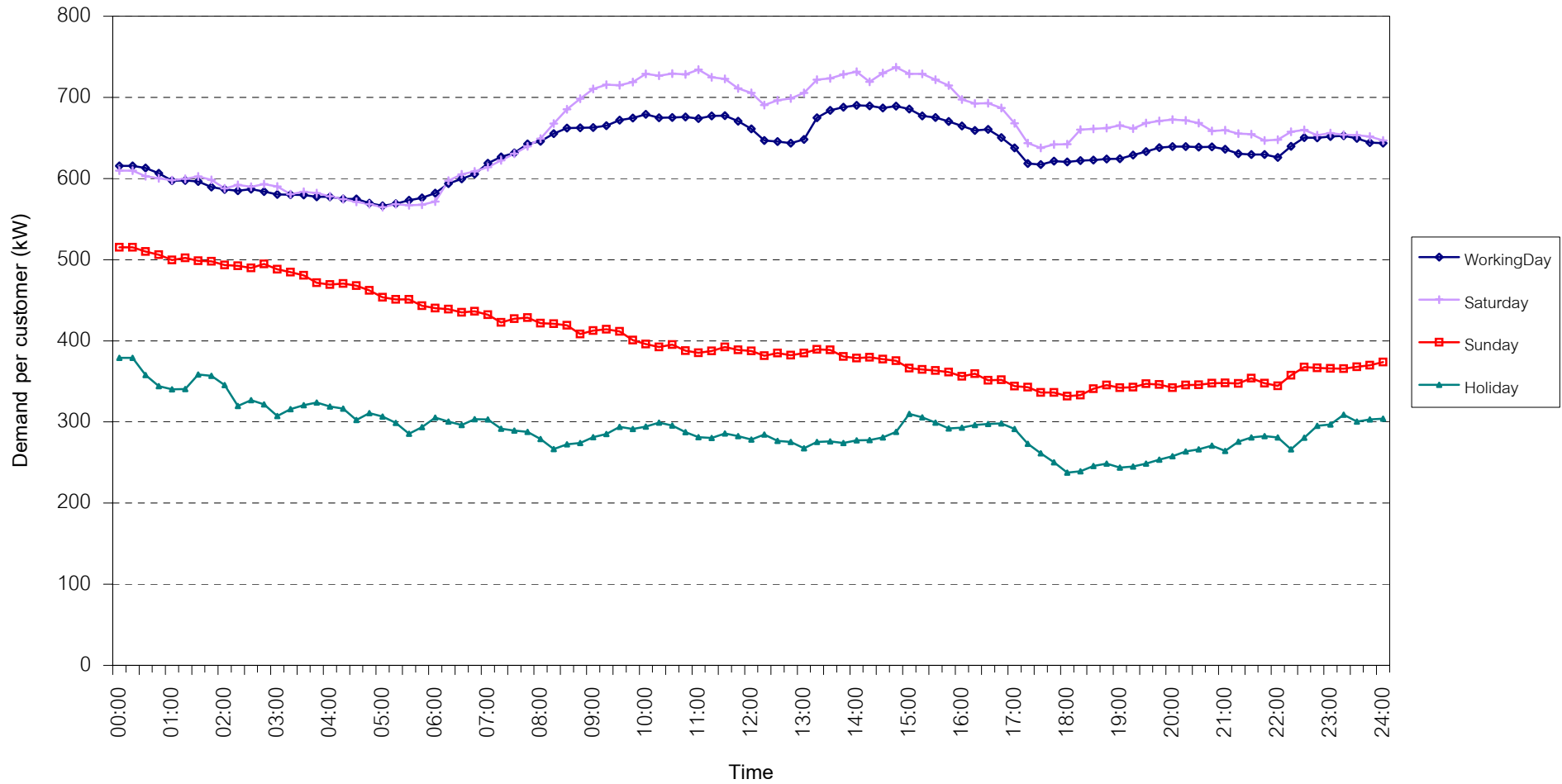
กราฟรูปที่ 8



TSIC 31 (Food Processing) Load Profile

Date: 1 Jul, 2007 to 31 Jul, 2007

Number of sample customers = 30



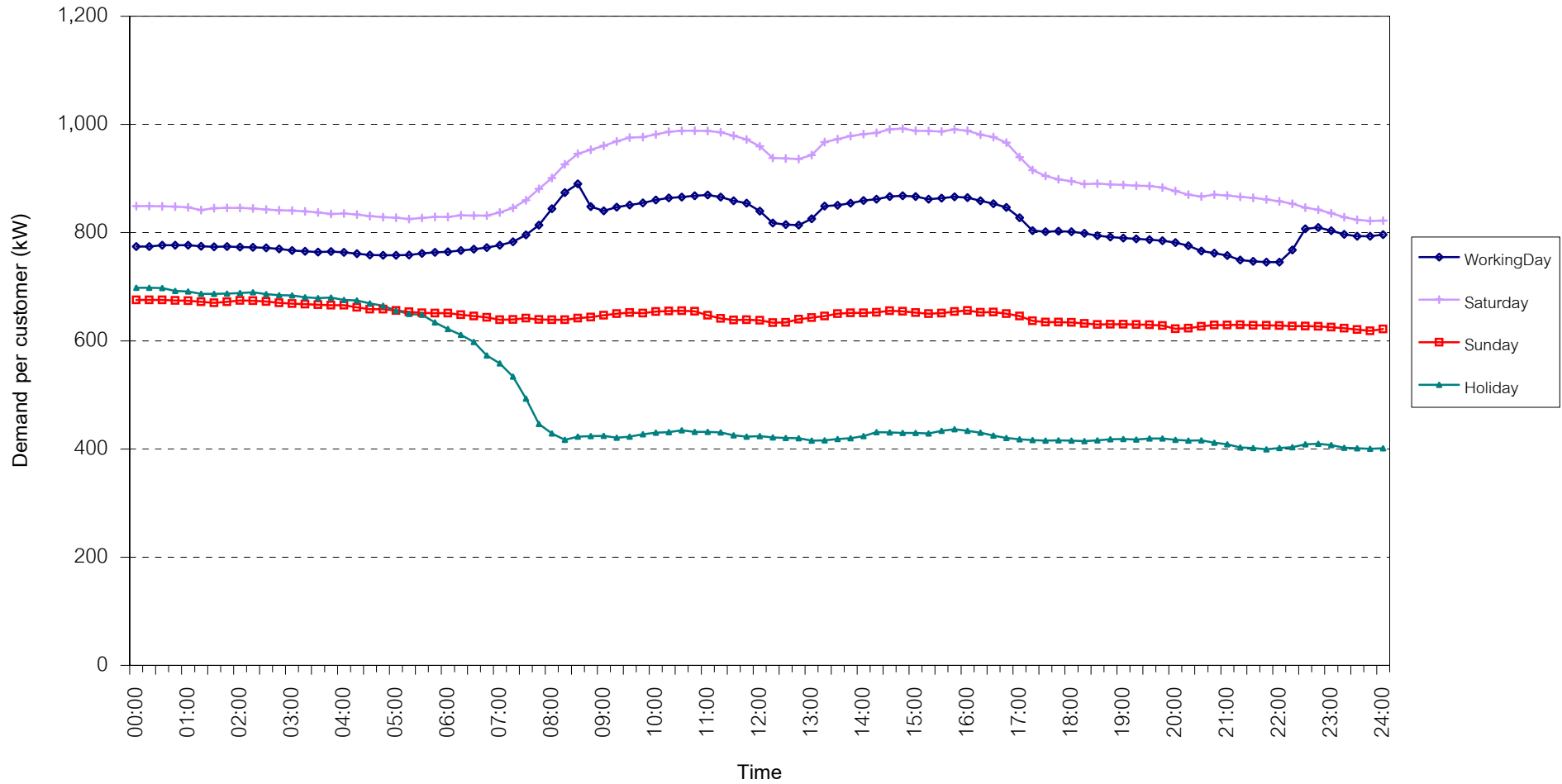
กราฟรูปที่ 9



TSIC 32 (Textiles) Load Profile

Date: 1 Jul, 2007 to 31 Jul, 2007

Number of sample customers = 63



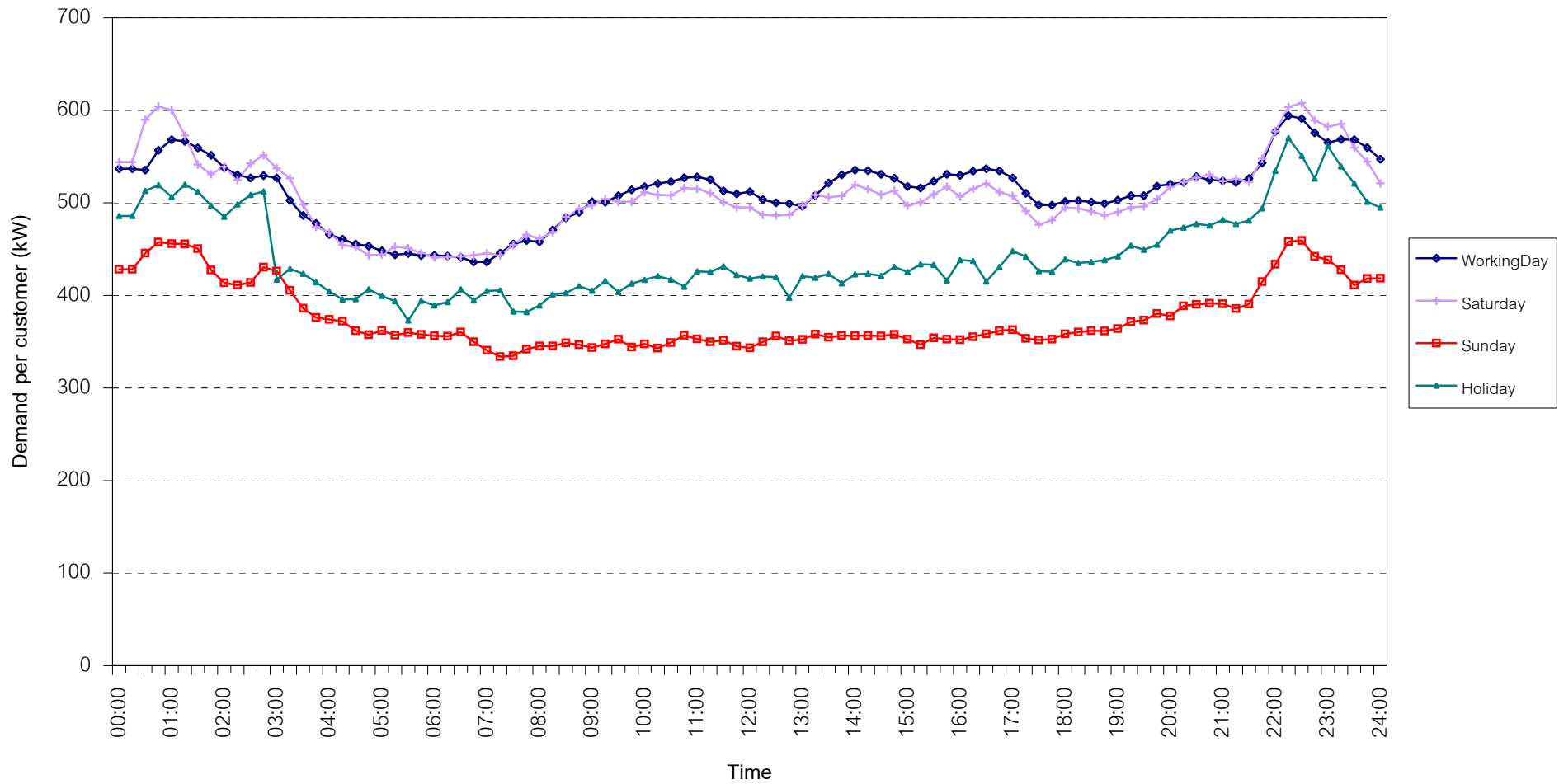
กราฟรูปที่ 10



TSIC 34 (Paper & Printing) Load Profile

Date: 1 Jul, 2007 to 31 Jul, 2007

Number of sample customers = 10



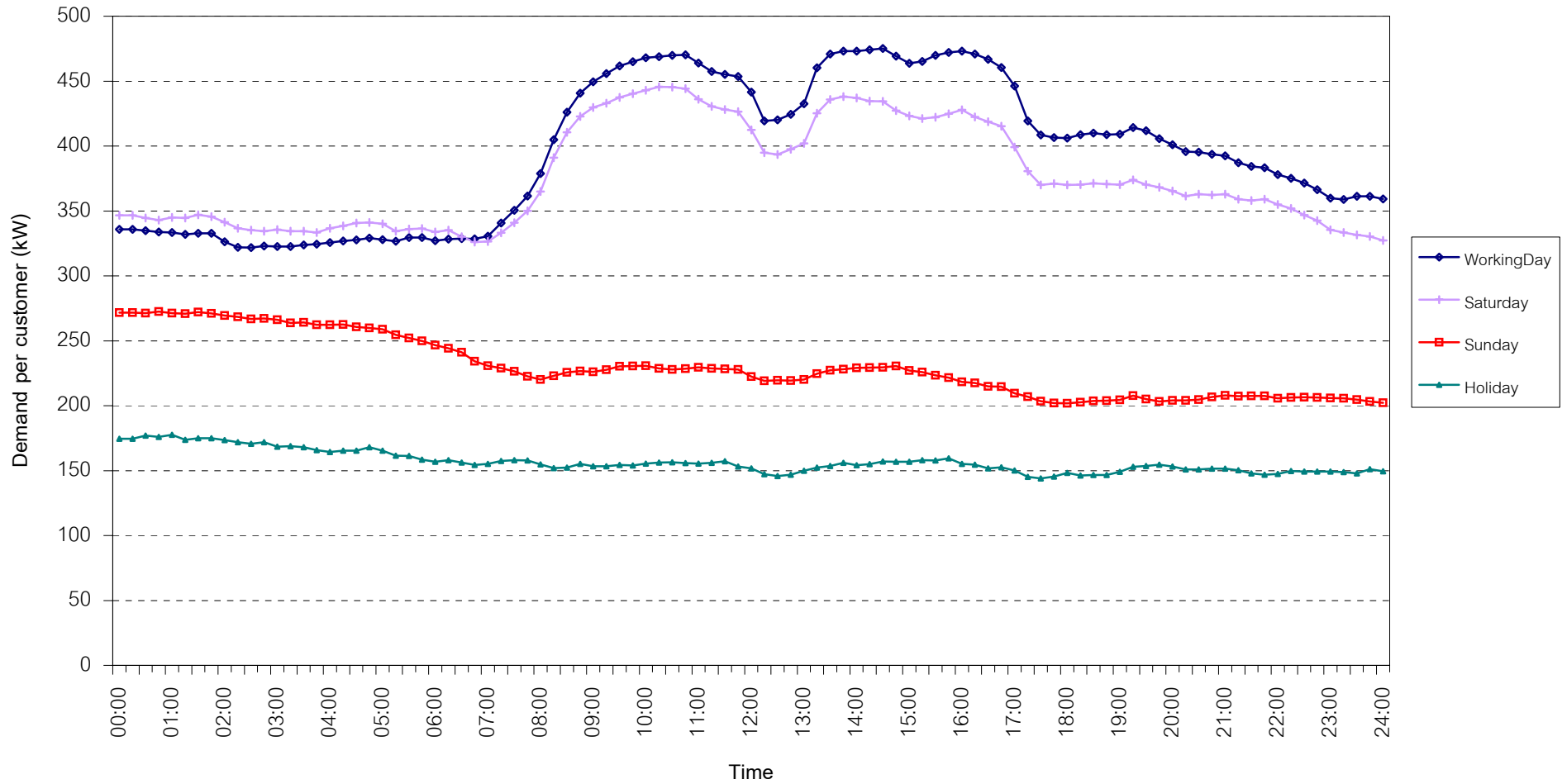
กราฟรูปที่ 11



TSIC 35 (Chemical & Petroleum) Load Profile

Date: 1 Jul, 2007 to 31 Jul, 2007

Number of sample customers = 62



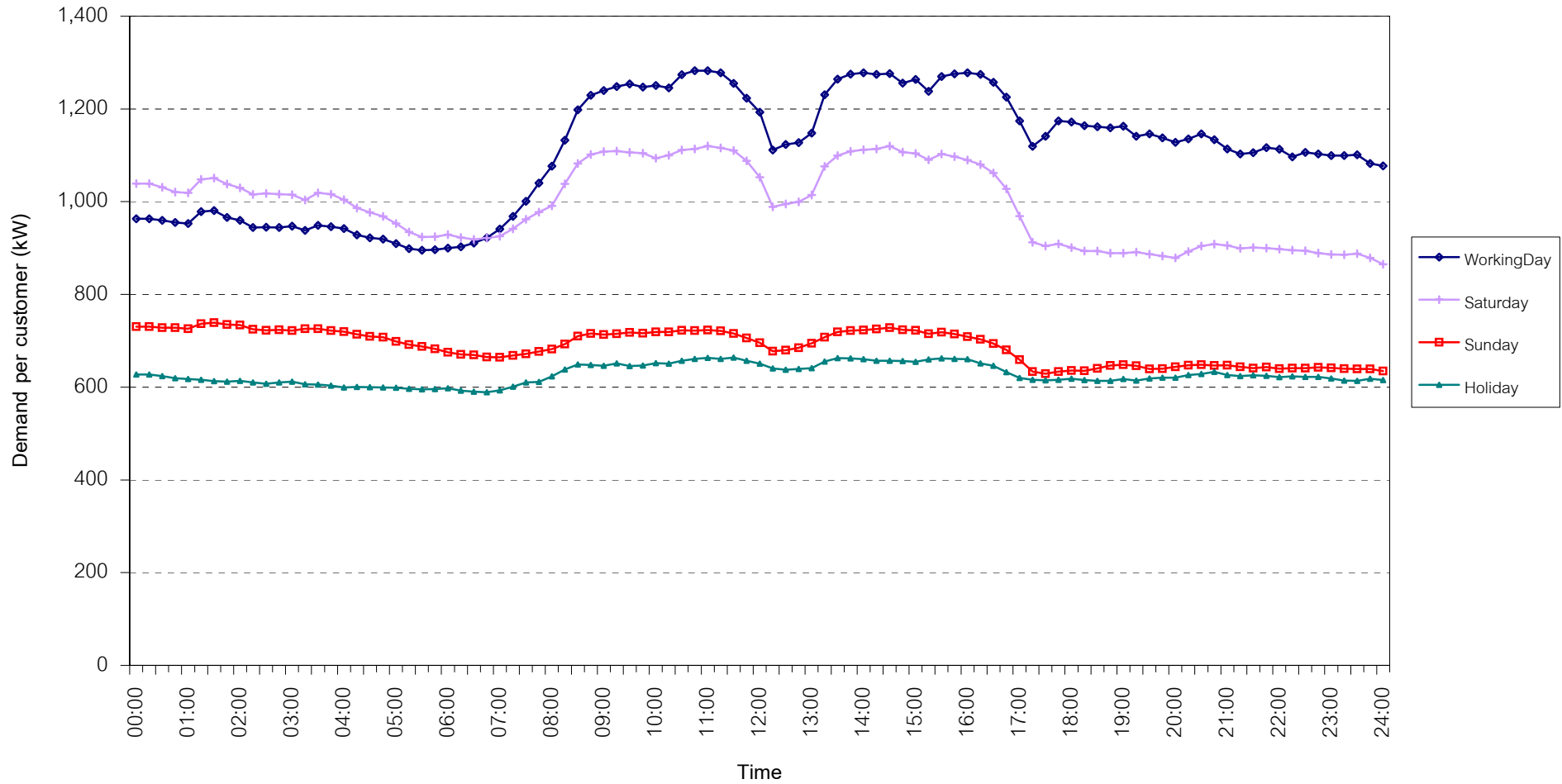
กราฟรูปที่ 12



TSIC 38 (Fabricated Metal Products) Load Profile

Date: 1 Jul, 2007 to 31 Jul, 2007

Number of sample customers = 61



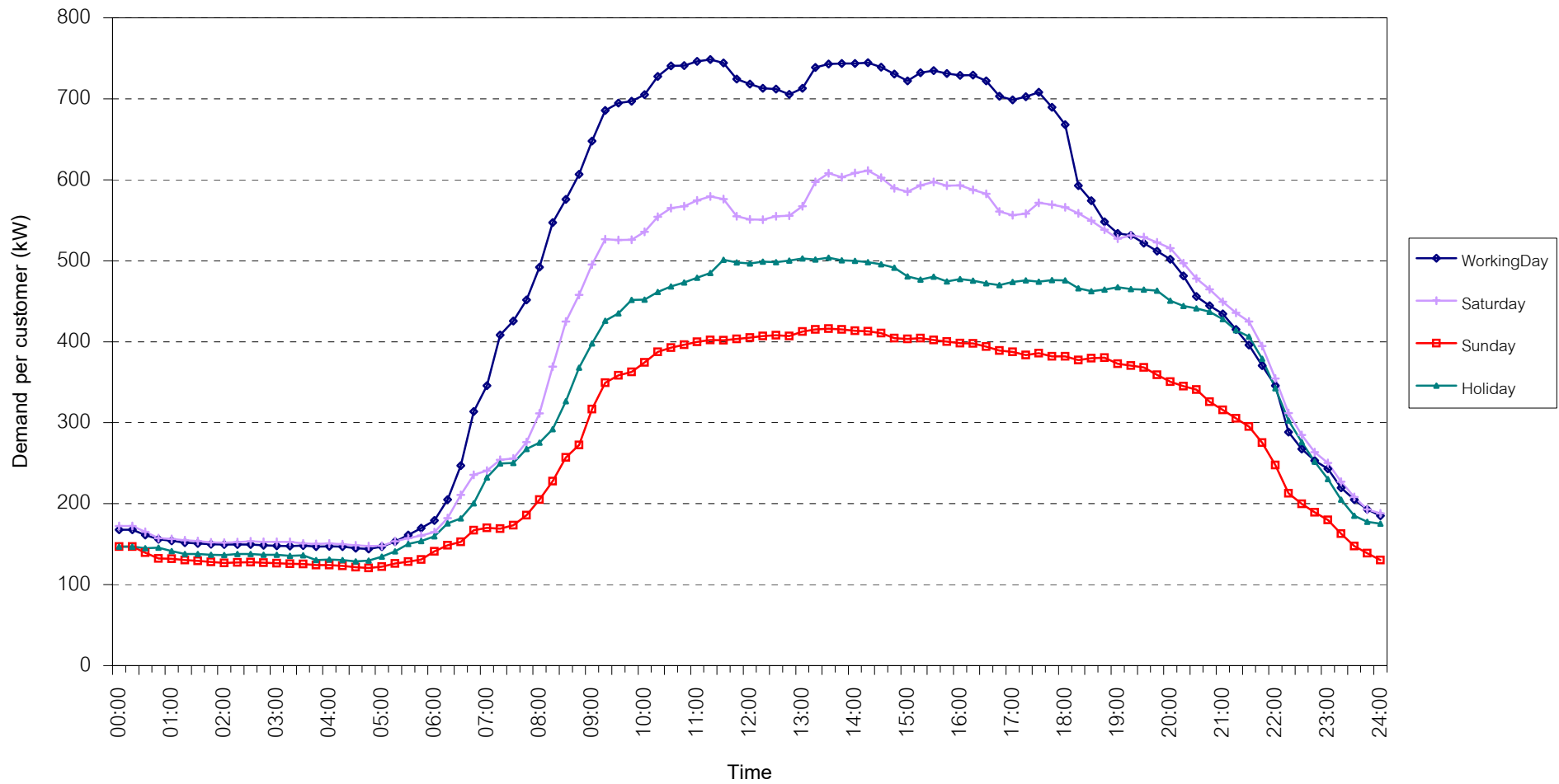
กราฟรูปที่ 13



TSIC 61 (Wholesale Trade) Load Profile

Date: 1 Jul, 2007 to 31 Jul, 2007

Number of sample customers = 8



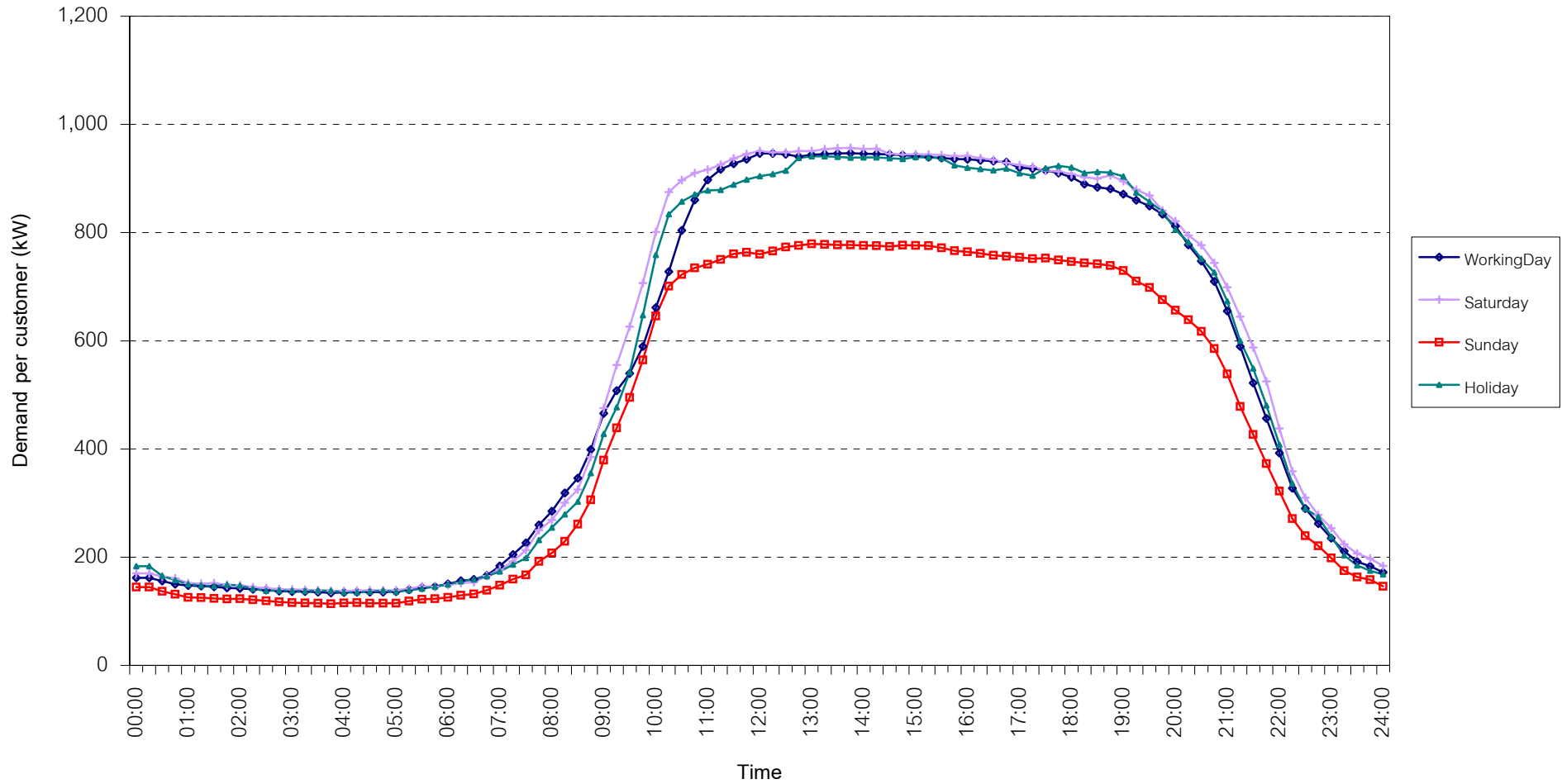
กราฟรูปที่ 14



TSIC 62 (Retail Trade) Load Profile

Date: 1 Jul, 2007 to 31 Jul, 2007

Number of sample customers = 73



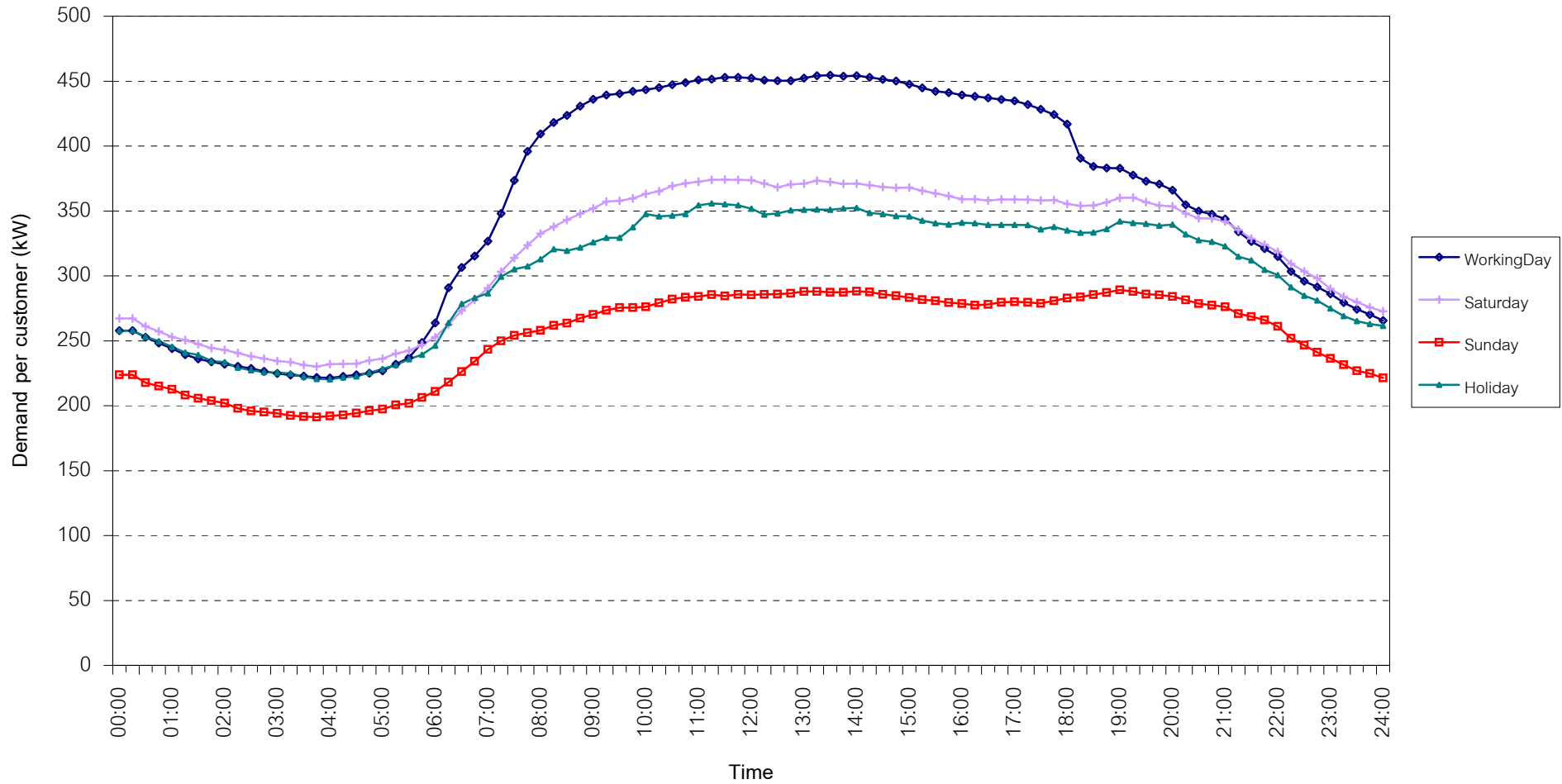
กราฟรูปที่ 15



TSIC 63 (Hotels and restaurants) Load Profile

Date: 1 Jul, 2007 to 31 Jul, 2007

Number of sample customers = 82



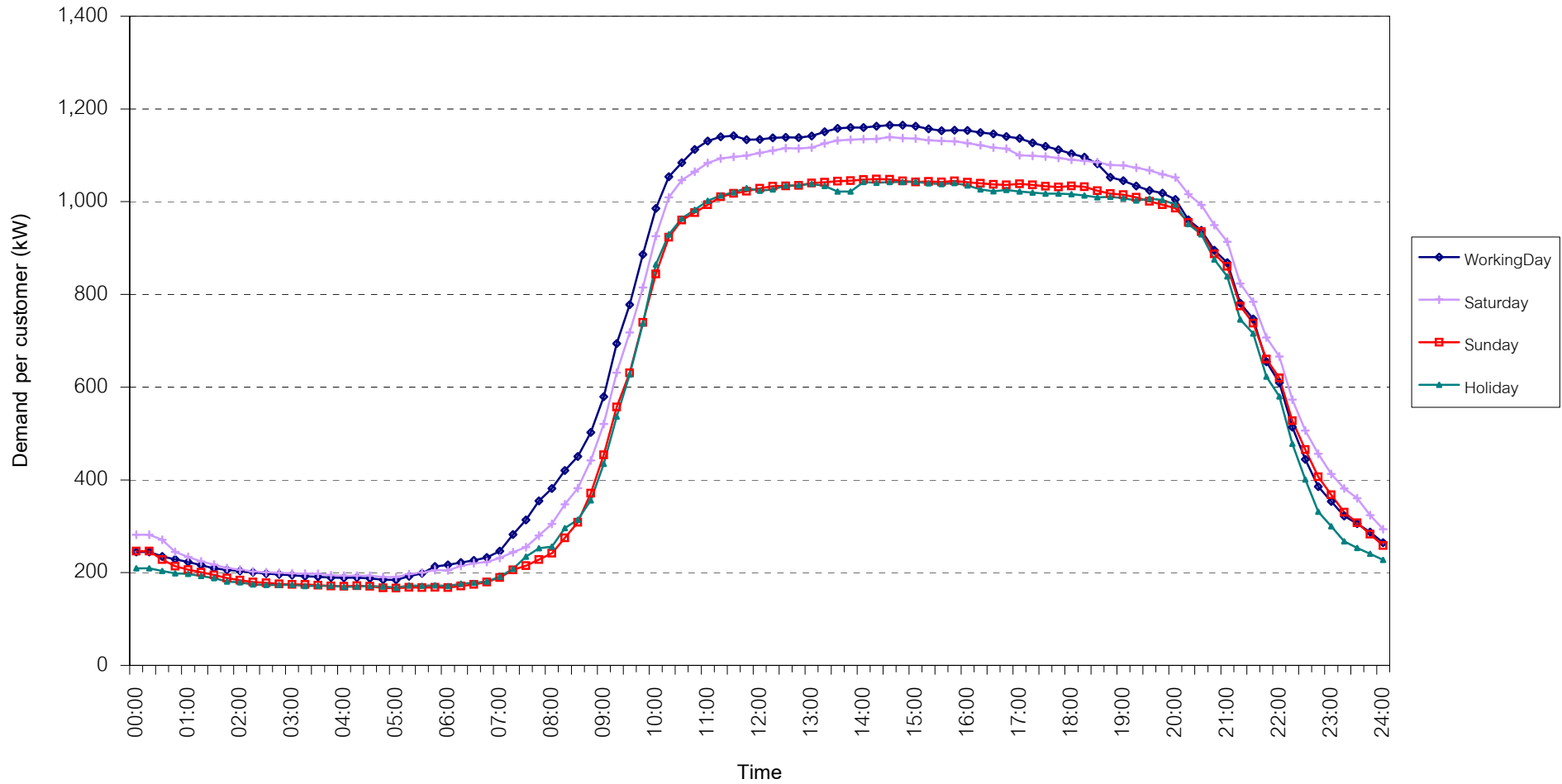
กราฟรูปที่ 16



TSIC 83 (Real Estate) Load Profile

Date: 1 Jul, 2007 to 31 Jul, 2007

Number of sample customers = 33



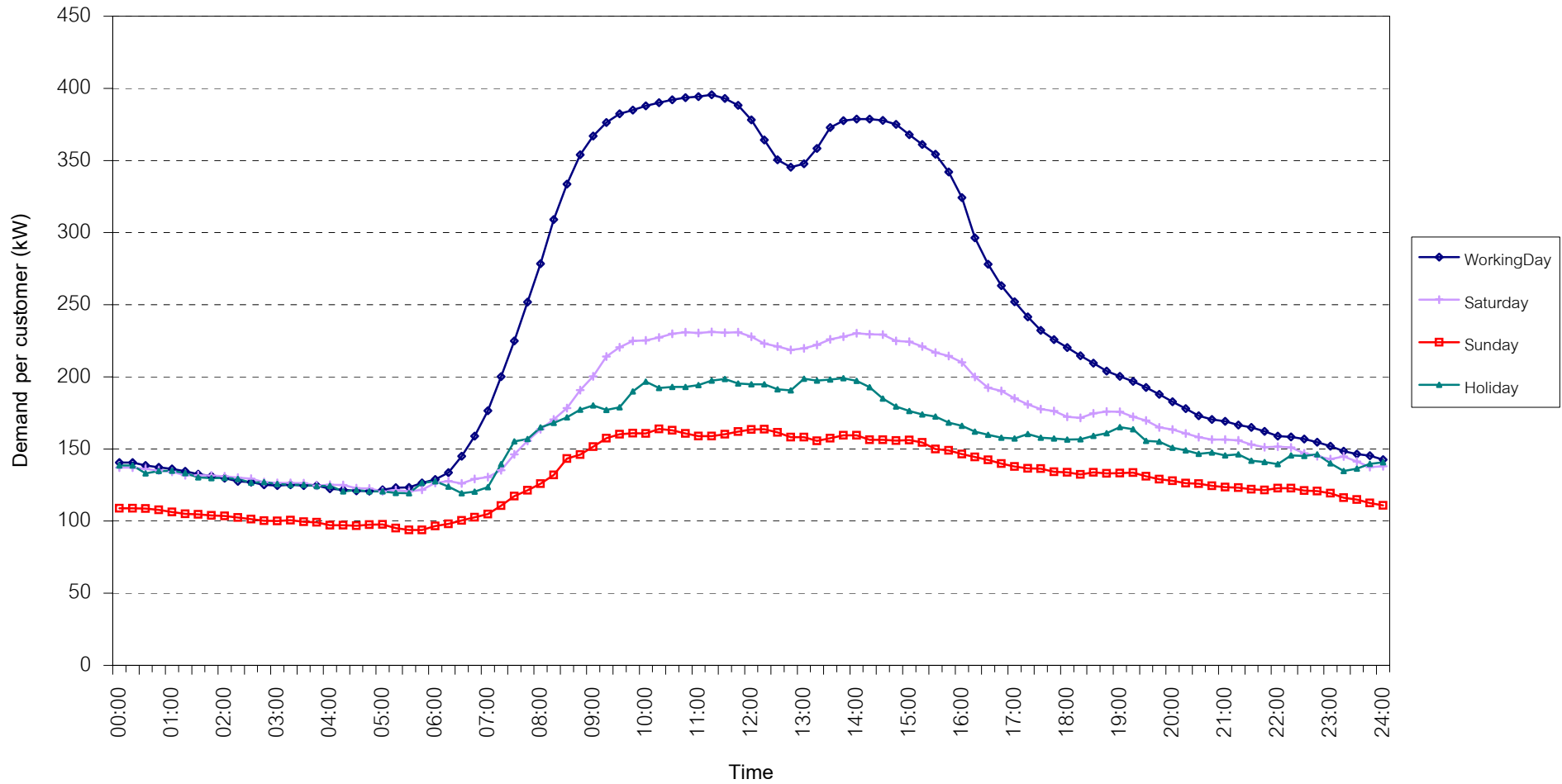
กราฟรูปที่ 17



TSIC 93 (Social Services) Load Profile

Date: 1 Jul, 2007 to 31 Jul, 2007

Number of sample customers = 21

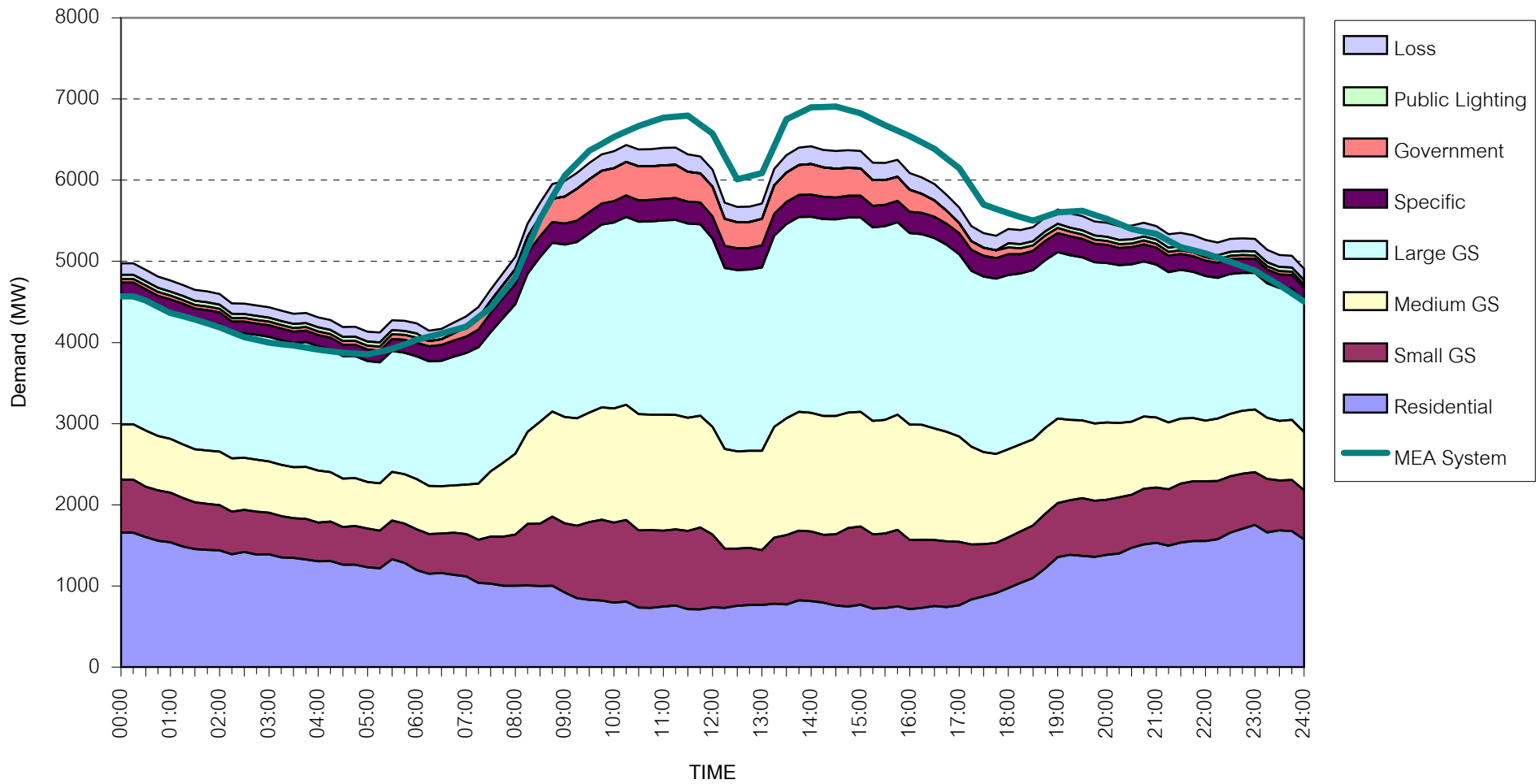


กราฟรูปที่ 18



MEA's System Load Profile

Peak Day 20 July, 2007 at 14:30



กราฟรูปที่ 19